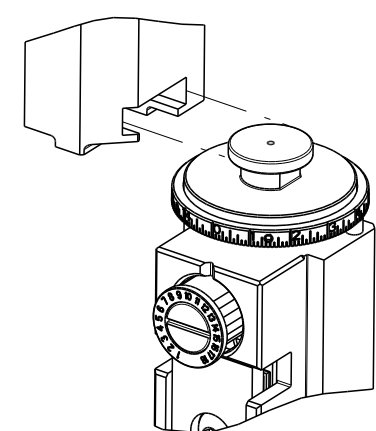


PART NUMBER	REVISION	DESCRIPTION	FEED TYPE
2836095-2	A	FINE CRIMP HEIGHT ADJUST	PNEUMATIC
7-2836095-2	A	PNEUMATIC AND CRIMP TOOLING KIT	PNEUMATIC
7-2836095-7	A	CRIMP TOOLING KIT	-

ATLANTIC VERSION TERMINATOR INTERFACE ADAPTER

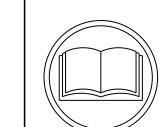


APPLICATOR DATA		
CRIMP	SIZE	TYPE
WIRE	2.80 mm [.110]	F
INSUL	4.30 mm [.169]	O

APPLICATOR INSTRUCTIONS 408-35042

TERMINAL DATA: TE TERMINAL		TE CRIMP SPECIFICATION	
TERMINAL NAME: TAB 5.8 X 0.8 ASSY			
WIRE STRIP LENGTH		INSULATION DIAMETER RANGE	
4.70-5.30 mm [.185-.209 IN]		∅2.40-3.70 mm [.094-.146 IN]	
TERMINAL APPLICATION SPECIFICATION	114-18052	-	-
TERMINALS APPLIED			
TE TERMINAL	TE TERMINAL	TE TERMINAL	TE TERMINAL
1-962845-1	1-962845-2		

WIRE SIZE	CRIMP HEIGHT mm [INCH]	CRIMP HEIGHT REFERENCE SETTING
2.50mm2	1.97+/-0.05 [.078+/- .002]	4.7
2.00mm2	1.83+/-0.05 [.072+/- .002]	6.3
1.50mm2	1.69+/-0.05 [.067+/- .002]	7.6



- RECOMMENDED SPARE PARTS
- REFER TO SUPPLIED INSTRUCTION SHEET FOR CLEANING, LUBRICATION AND STORAGE OF APPLICATOR.
- APPLY PART NUMBER 2-23419-6 LOCTITE TO THREADS OF ITEM 242.
- CRIMP HEIGHT REFERENCE SETTING WAS THE SETTING USED WHEN THE APPLICATOR WAS QUALIFIED AT THE FACTORY. ADJUSTMENT MAY BE NECESSARY WHEN RUNNING APPLICATOR IN THE FIELD.
- 5. UNLESS SPECIFIED OTHERWISE TORQUE VALUES SHALL BE USED PER DOCUMENT, 101-35000.
- TERMINAL PITCH NOT COMPATIBLE WITH MECHANICAL FEED.
- TERMINAL LUBRICANT IS RECOMMENDED.

**\*WARNING**  
ON INSTALLATION, SET WIRE DISC TO CRIMP HEIGHT REFERENCE SETTING FOR LARGEST WIRE SIZE. CRIMP HEIGHT REFERENCE SETTINGS GREATER THAN THE VALUE SHOWN MAY CAUSE DAMAGE TO THE CRIMP TOOLING. REFER TO THE INSTRUCTION SHEET FOR PROPER SETUP AND ADJUSTMENTS.

ATLANTIC VERSION  
Shown on sheets 1 of 4 & 2 of 4  
(Pacific version shown on sheets 3 of 4 & 4 of 4)

LOC	DIST	REVISIONS					
A	66	P	LTN	DESCRIPTION	DATE	OWN	APVD
		1		DEVELOPMENT	16NOV2015	XZ	UG
		2		OCEAN 2.0 Convert	01APR2021	FZ	YY
		A		RELEASED FOR PRODUCTION	11MAY2021	JWC	TE

-	2	2	2168083-1	SCR, SKT HD CAP, RoHS, M3 X 8.0	269
-	1	1	1633782-5	FENCE	267
-	1	1	1803078-5	SPACER, PRECISION	259
-	1	1	2119641-1	FEED CAM, AIR FEED	248
-	1	1	2119082-7	CAM, SNAIL, INSULATION ADJUSTMENT	244
-	1	1	2079764-1	WASHER, WAVE SPRING, CREST-TO-CREST	243
-	1	1	2119083-1	RETAINER, INSULATION DIAL	242
-	1	1	7-18023-7	SCR, SKT HD CAP M3 X 4.0	241
-	1	1	2844940-1	AIR FEED MODULE	238
-	REF	REF	994970-2	COUNTER, MAGNETIC	164
-	1	1	455888-4	SPACER, CRIMPER	120
-	1	1	2119955-1	ASSY, LUBRICATOR, SIDE FEED	113
-	1	1	2844908-1	SCREW, LOCKING	99
-	1	1	2844907-1	POST, LOCKING	98
-	1	1	455888-8	SPACER, CRIMPER	82
-	2	2	2079383-4	SCR, BHSC, RoHS (M4 X 8)	79
-	1	1	1803096-1	EXTENSION PLATE	78
-	1	1	1803607-3	DOCUMENTATION PACKAGE	71
-	1	1	2119791-6	DEPRESSOR, WIRE	70
-	1	1	2119943-1	WASHER, SPACER	69
-	1	1	2119740-1	TAG, IDENTIFICATION	67
-	2	2	2168078-1	SCREW, DRIVE, RH, RoHS, 2 x .188	66
-	1	1	2168083-2	SCR, SKT HD CAP, RoHS, M4 X 8.0	60
-	1	1	5-18022-5	SCR, HEX HD CAP, M4 X 6.0	59
-	1	1	1338683-8	FEED PAWL	56
-	4	4	2168083-3	SCR, SKT HD CAP, RoHS, M4 X 12.0	54
-	2	2	1-2168083-0	SCR, SKT HD CAP, RoHS, M4 X 10	53
-	1	1	5018030-1	NUT, HEX, REG, RoHS, M3	52
-	1	1	811242-6	BUMPER, HOLD DOWN	51
-	1	1	690753-2	SPACER, TONKER	50
-	1	1	18023-9	SCR, SKT HD CAP M4 X 6.0	49
-	1	1	1803583-9	APPLICATOR BASIC ASSEMBLY, SF	46
-	1	1	1803515-2	RAM ASSEMBLY, SF ATLANTIC	44
-	1	1	1803602-2	SCR, BHSC, RoHS (M8 X 40)	41
-	1	1	1-1752356-2	SUPPORT, TERMINAL	34
-	2	2	2079383-5	SCR, BHSC, RoHS (M4 X 20)	33
-	2	2	2-2844962-0	SPACER, CYLINDRICAL, STRIP GUIDE	30
-	1	1	2844992-2	ASSEMBLY, STRIP GUIDE	29
-	1	1	2-455888-2	SPACER, CRIMPER	28
-	1	1	1320928-6	STRIP GUIDE	24
-	1	1	2168083-2	SCR, SKT HD CAP, RoHS, M4 X 8.0	21
-	2	2	1-18028-2	WASHER, FLAT, REG M4	20
-	1	1	2119533-1	STRIPPER, SIDE FEED	19
-	1	1	2119806-1	INSERT, SHEAR	13
-	1	1	3-22280-3	SPRING, COMPRESSION	12
-	1	1	1-356885-4	STOP, SHEAR	11
-	1	1	2119805-8	SHEAR HOLDER, FRONT	10
-	1	1	2-454276-4	FLOATING SHEAR, FRONT	9
-	1	2	1-1803171-1	ANVIL, COMBINATION	8
-	-	-	-	-	7
-	-	-	-	-	6
-	1	1	1-2119757-2	DEPRESSOR, SHEAR	5
-	1	1	238011-3	BLOCK, CRIMPER SPACER	4
-	1	2	1-1803248-0	CRIMPER, INSULATION O PREMIUM	3
-	1	1	455888-1	SPACER, CRIMPER	2
-	1	2	2-456408-8	CRIMPER, WIRE PREMIUM	1

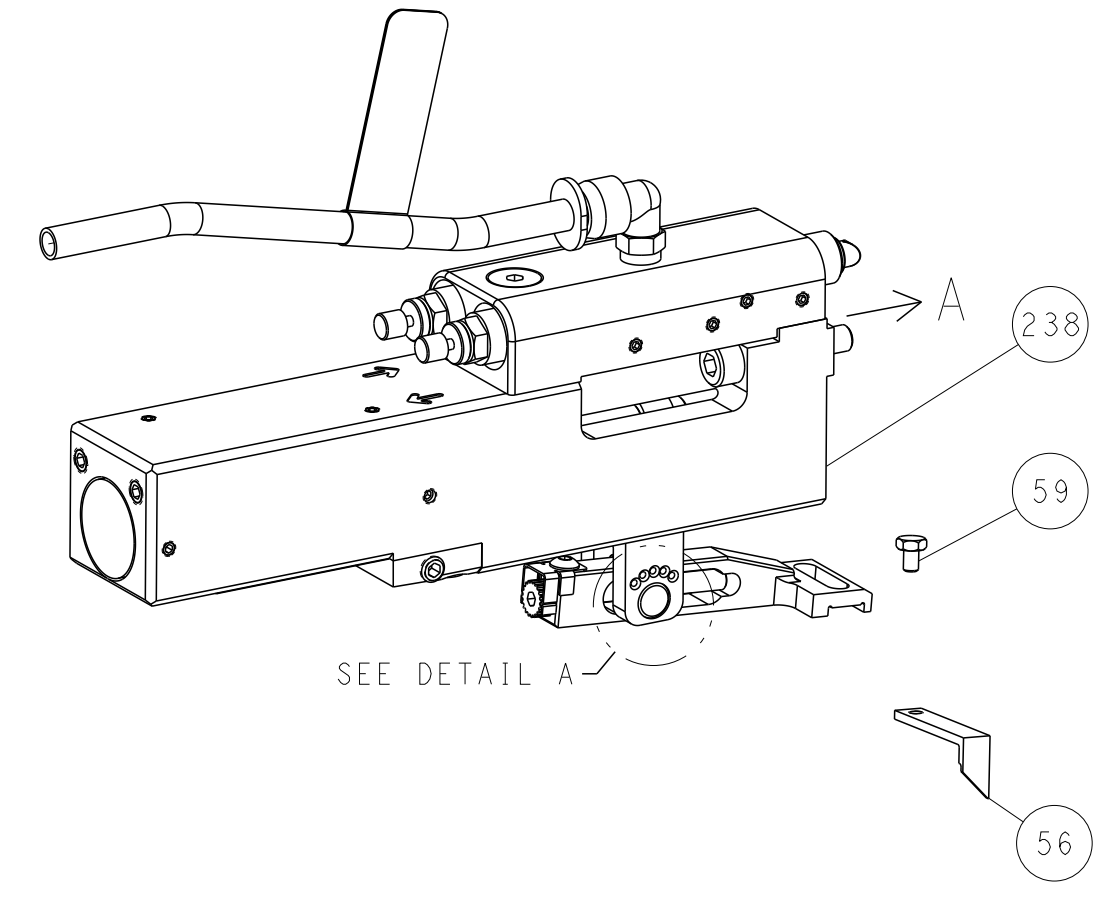
DIMENSIONS:		TOLERANCES UNLESS OTHERWISE SPECIFIED:		MATERIAL:		FINISH:	
mm	0 PLC ±	1 PLC ±	2 PLC ±	3 PLC ±	4 PLC ±	ANGLES ±	FINISH ±

OWN	X. ZHAO	16NOV2015	CHK	L. ZHANG	16NOV2015	APVD	J. GUO	16NOV2015
PRODUCT SPEC								
APPLICATION SPEC								
SIZE	A1	CAGE CODE	00779	DRAWING NO	2836095	RESTRICTED TO		
WEIGHT								
Customer Accessible Production Drawing								
SCALE	1:2	SHEET	1	OF	4	REV	A	

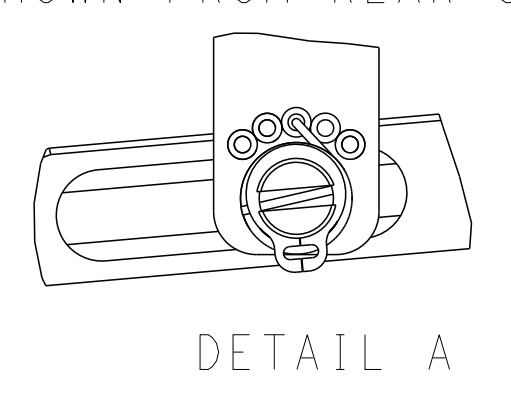
LOC	DIST	REVISIONS					
A	66	P	LTN	DESCRIPTION	DATE	DWN	APVD
		-		SEE SHEET 1			

# FEED TYPE

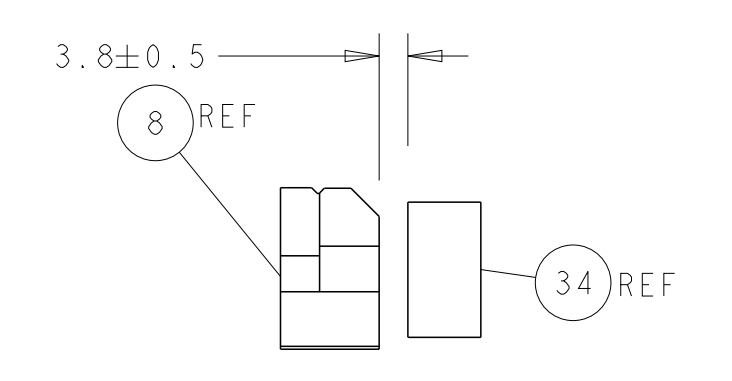
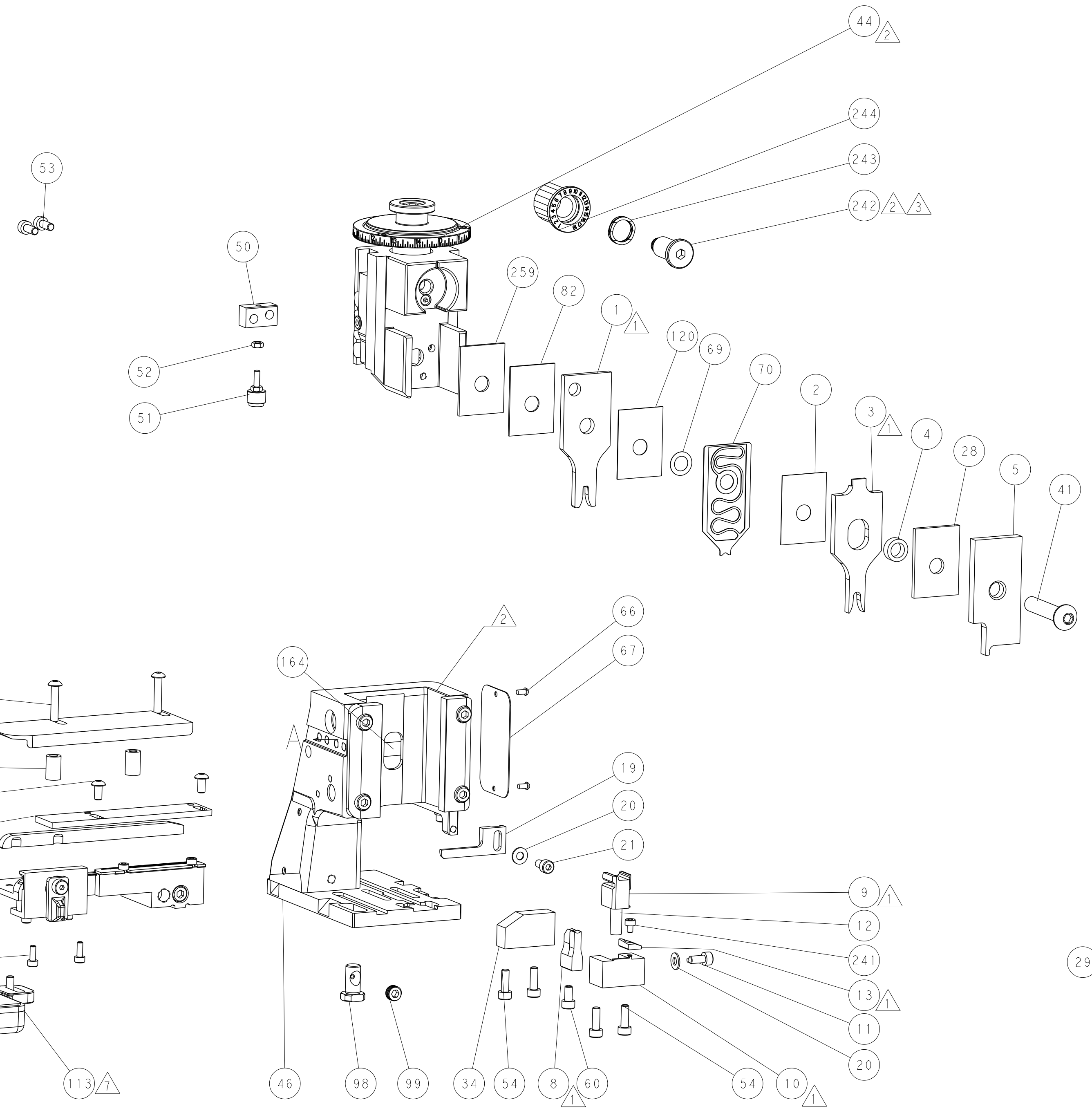
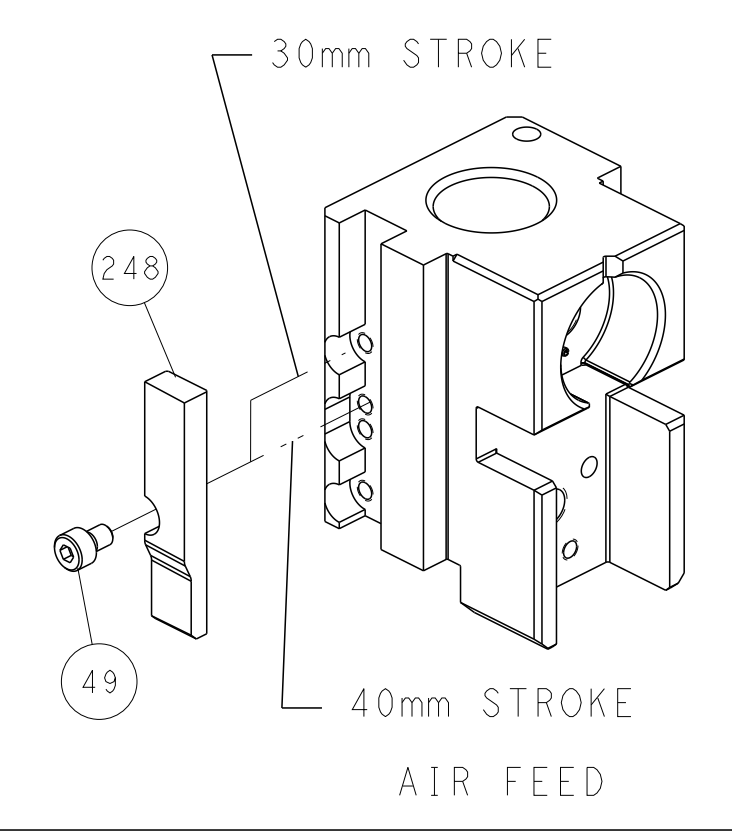
## PNEUMATIC



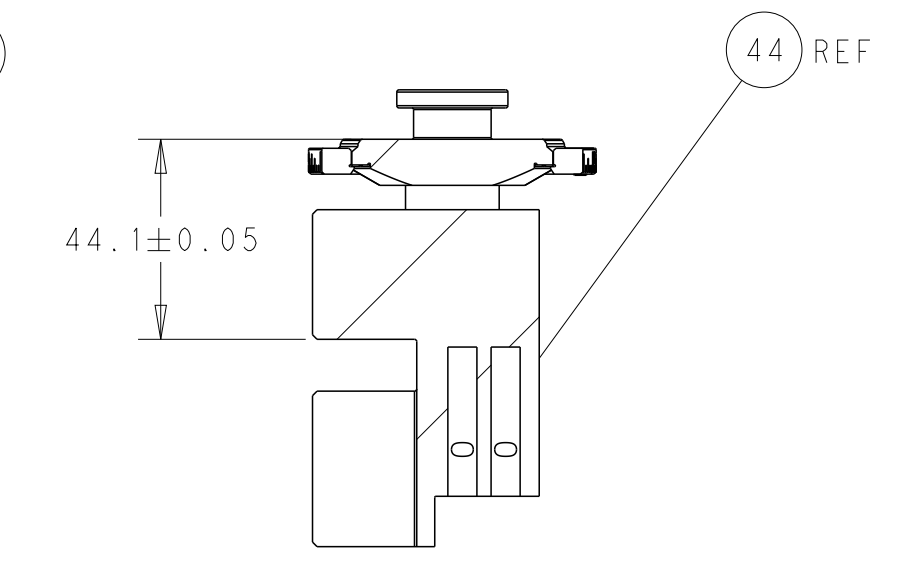
## FEED SPRING SETTING POSITION (SHOWN FROM REAR SIDE)



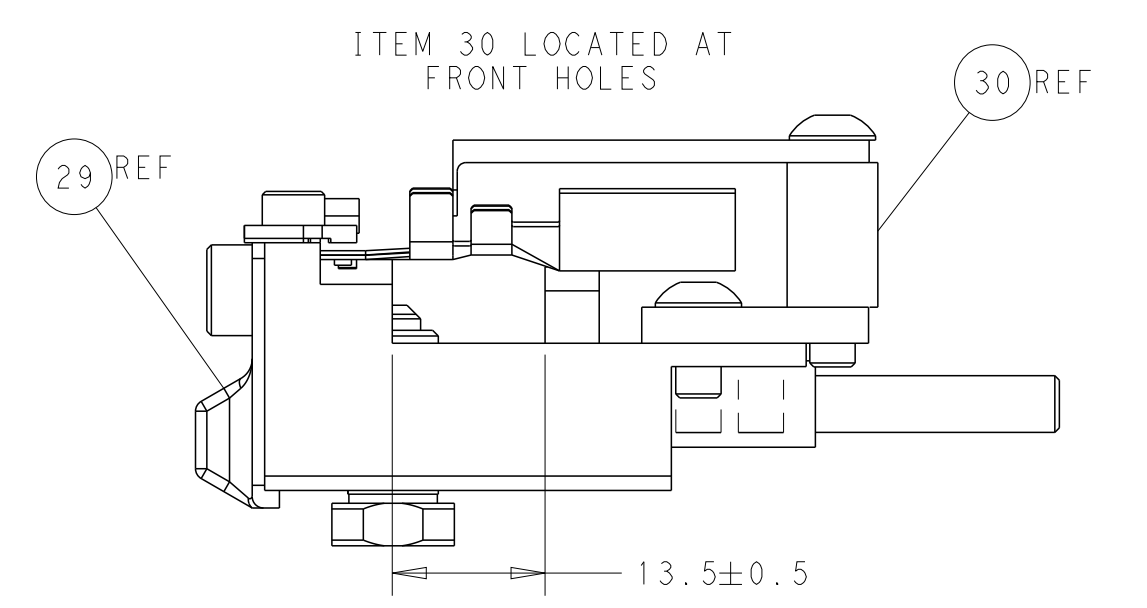
## CAM POSITION



TERMINAL SUPPORT LOCATION



RAM SET-UP



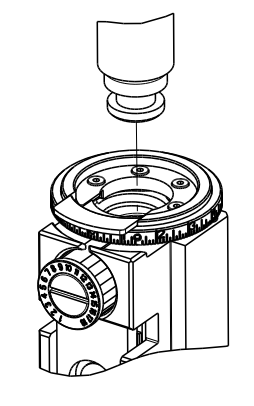
FEED TRACK POSITION GUIDE BY INSULATION BARREL

**ATLANTIC VERSION**  
 Shown on sheets 1 of 4 & 2 of 4  
 (Pacific version shown on sheets 3 of 4 & 4 of 4)

<small>THIS DRAWING IS UNPUBLISHED. RELEASED FOR PUBLICATION BY TYCO ELECTRONICS CORPORATION. ALL RIGHTS RESERVED.</small>		DWN X.ZHAO 16NOV2015 CHK L.ZHANG 16NOV2015 APVD J.GUO 16NOV2015	TE Connectivity Harrisburg, PA 17105-3608
DIMENSIONS: mm TOLERANCES UNLESS OTHERWISE SPECIFIED: 0 PLC ± 1 PLC ± 2 PLC ± 3 PLC ± 4 PLC ± ANGLES ± FINISH		NAME: Ocean Side Feed Applicator SIZE: A1 CAGE CODE: 00779 DRAWING NO: 2836095	RESTRICTED TO: - SCALE: 1:2 SHEET: 2 OF 4 REV: A
MATERIAL: - FINISH: -		WEIGHT: - Customer Accessible Production Drawing	SHEETS 3 & 4 ARE NOT REQUIRED FOR ATLANTIC VERSION

PART NUMBER	REVISION	DESCRIPTION	FEED TYPE
2-2836095-2	A	FINE CRIMP HEIGHT ADJUST	PNEUMATIC
7-2836095-7	A	CRIMP TOOLING KIT	-

PACIFIC VERSION TERMINATOR  
 INTERFACE ADAPTER



APPLICATOR DATA		
CRIMP	SIZE	TYPE
WIRE	2.80 mm [.110]	F
INSUL	4.30 mm [.169]	O

APPLICATOR INSTRUCTIONS  
 408-35042

TERMINAL DATA: TE TERMINAL		TE CRIMP SPECIFICATION	
TERMINAL NAME: TAB 5.8 X 0.8 ASSY			
WIRE STRIP LENGTH		INSULATION DIAMETER RANGE	
4.70-5.30 mm [1.85-.209 IN]		∅2.40-3.70 mm [1.094-.146 IN]	
TERMINAL APPLICATION SPECIFICATION	114-18052		
TERMINALS APPLIED			
TE TERMINAL	TE TERMINAL	TE TERMINAL	TE TERMINAL
1-962845-1	1-962845-2		

WIRE SIZE	CRIMP HEIGHT mm [INCH]	CRIMP HEIGHT REFERENCE SETTING
2.50mm2	1.97+/-0.05 [1.078+/-0.002]	4.7
2.00mm2	1.83+/-0.05 [1.072+/-0.002]	6.3
1.50mm2	1.69+/-0.05 [1.067+/-0.002]	7.6

- RECOMMENDED SPARE PARTS
- REFER TO SUPPLIED INSTRUCTION SHEET FOR CLEANING, LUBRICATION AND STORAGE OF APPLICATOR.
- APPLY PART NUMBER 2-23419-6 LOCTITE TO THREADS OF ITEM 242.
- CRIMP HEIGHT REFERENCE SETTING WAS THE SETTING USED WHEN THE APPLICATOR WAS QUALIFIED AT THE FACTORY. ADJUSTMENT MAY BE NECESSARY WHEN RUNNING APPLICATOR IN THE FIELD.
- 5. UNLESS SPECIFIED OTHERWISE TORQUE VALUES SHALL BE USED PER DOCUMENT, 101-35000.
- TERMINAL PITCH NOT COMPATIBLE WITH MECHANICAL FEED.
- TERMINAL LUBRICANT IS RECOMMENDED.

**\*WARNING**  
 ON INSTALLATION, SET WIRE DISC TO CRIMP HEIGHT REFERENCE SETTING FOR LARGEST WIRE SIZE. CRIMP HEIGHT REFERENCE SETTINGS GREATER THAN THE VALUE SHOWN MAY CAUSE DAMAGE TO THE CRIMP TOOLING, REFER TO THE INSTRUCTION SHEET FOR PROPER SETUP AND ADJUSTMENTS.

**PACIFIC VERSION**  
 Shown on sheets 3 of 4 & 4 of 4  
 (Atlantic version shown on sheets 1 of 4 & 2 of 4)

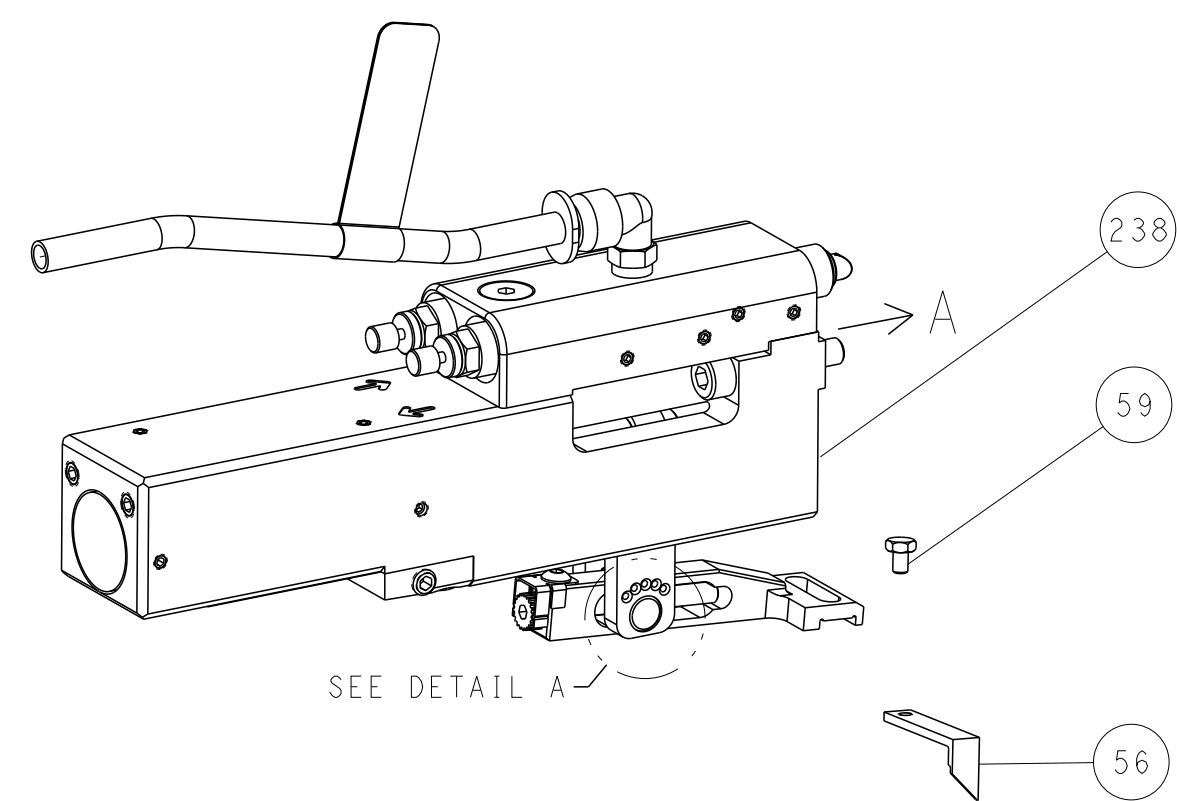
LOC	DIST	REV	DATE	BY	CHK	APPD
A	66					

REVISIONS						
REV	DATE	DESCRIPTION	DATE	BY	CHK	APPD
-		SEE SHEET 1				
-	2	2168083-1	SCR, SKT HD CAP, RoHS, M3 X 8.0			269
-	1	1633782-5	FENCE			267
-	1	1803078-5	SPACER, PRECISION			259
-	1	2119082-7	CAM, SNAIL, INSULATION ADJUSTMENT			244
-	1	2079764-1	WASHER, WAVE SPRING, CREST-TO-CREST			243
-	1	2119083-1	RETAINER, INSULATION DIAL			242
-	1	7-18023-7	SCR, SKT HD CAP M3 X 4.0			241
-	1	2844940-1	AIR FEED MODULE			238
-	REF	994970-2	COUNTER, MAGNETIC			164
-	1	2119641-2	FEED CAM, AIR FEED			151
-	1	2168083-8	SCR, SKT HD CAP, RoHS, M4 X 16			144
-	4	2168083-9	SCR, SKT HD CAP, RoHS, M4 X 20			143
-	1	1-1803583-0	APPLICATOR BASIC ASSEMBLY, SF			141
-	1	1803516-2	RAM ASSEMBLY, SF PACIFIC			140
-	1	455888-4	SPACER, CRIMPER			120
-	1	2119955-1	ASSY, LUBRICATOR, SIDE FEED			113
-	1	2844908-1	SCREW, LOCKING			99
-	1	2844907-1	POST, LOCKING			98
-	1	455888-8	SPACER, CRIMPER			82
-	2	2079383-4	SCR, BHSC, RoHS (M4 X 8)			79
-	1	1803096-1	EXTENSION PLATE			78
-	1	1803607-3	DOCUMENTATION PACKAGE			71
-	1	2119791-6	DEPRESSOR, WIRE			70
-	1	2119943-1	WASHER, SPACER			69
-	1	2119740-1	TAG, IDENTIFICATION			67
-	2	2168078-1	SCREW, DRIVE, RH, RoHS, 2 x .188			66
-	1	5-18022-5	SCR, HEX HD CAP, M4 X 6.0			59
-	1	1338683-8	FEED PAWL			56
-	2	1-2168083-0	SCR, SKT HD CAP, RoHS, M4 X 10			53
-	1	5018030-1	NUT, HEX, REG, RoHS, M3			52
-	1	811242-6	BUMPER, HOLD DOWN			51
-	1	690753-2	SPACER, TONKER			50
-	1	18023-9	SCR, SKT HD CAP M4 X 6.0			49
-	1	1803602-2	SCR, BHSC, RoHS (M8 X 40)			41
-	1	1-1752356-2	SUPPORT, TERMINAL			34
-	2	2079383-5	SCR, BHSC, RoHS (M4 X 20)			33
-	2	2-2844962-0	SPACER, CYLINDRICAL, STRIP GUIDE			30
-	1	2844992-2	ASSEMBLY, STRIP GUIDE			29
-	1	2-455888-2	SPACER, CRIMPER			28
-	1	1320928-6	STRIP GUIDE			24
-	1	2168083-2	SCR, SKT HD CAP, RoHS, M4 X 8.0			21
-	2	1-18028-2	WASHER, FLAT, REG M4			20
-	1	2119533-1	STRIPPER, SIDE FEED			19
-	1	2119806-1	INSERT, SHEAR			13
-	1	3-22280-3	SPRING, COMPRESSION			12
-	1	1-356885-4	STOP, SHEAR			11
-	1	2119805-8	SHEAR HOLDER, FRONT			10
-	1	2-454276-4	FLOATING SHEAR, FRONT			9
-	1	7-1803171-1	ANVIL, COMBINATION			8
-	-	-	-			7
-	-	-	-			6
-	1	1-2119757-2	DEPRESSOR, SHEAR			5
-	1	238011-3	BLOCK, CRIMPER SPACER			4
-	1	1-21803248-0	CRIMPER, INSULATION O PREMIUM			3
-	1	455888-1	SPACER, CRIMPER			2
-	1	2-456408-8	CRIMPER, WIRE PREMIUM			1
-	77	-22	PART NO			ITEM NO

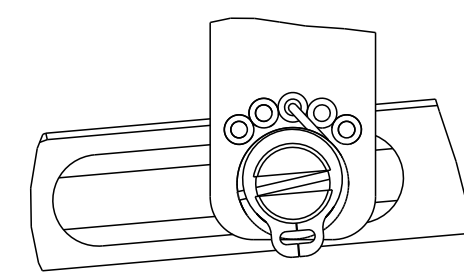
DIMENSIONS: mm 		TOLERANCES UNLESS OTHERWISE SPECIFIED: 0 PLC ± 1 PLC ± 2 PLC ± 3 PLC ± 4 PLC ± ANGLES ± FINISH		DWG: X.ZHAO 16NOV2015 CHK: L.ZHANG 16NOV2015 APVD: J.GUO 16NOV2015		NAME: Ocean Side Feed Applicator SIZE: A1 CAGE CODE: 00779 DRAWING NO: 2836095 SCALE: 1:2 SHEET: 3 OF 4 REV: A	
MATERIAL:				WEIGHT:		RESTRICTED TO:	

# FEED TYPE

## PNEUMATIC

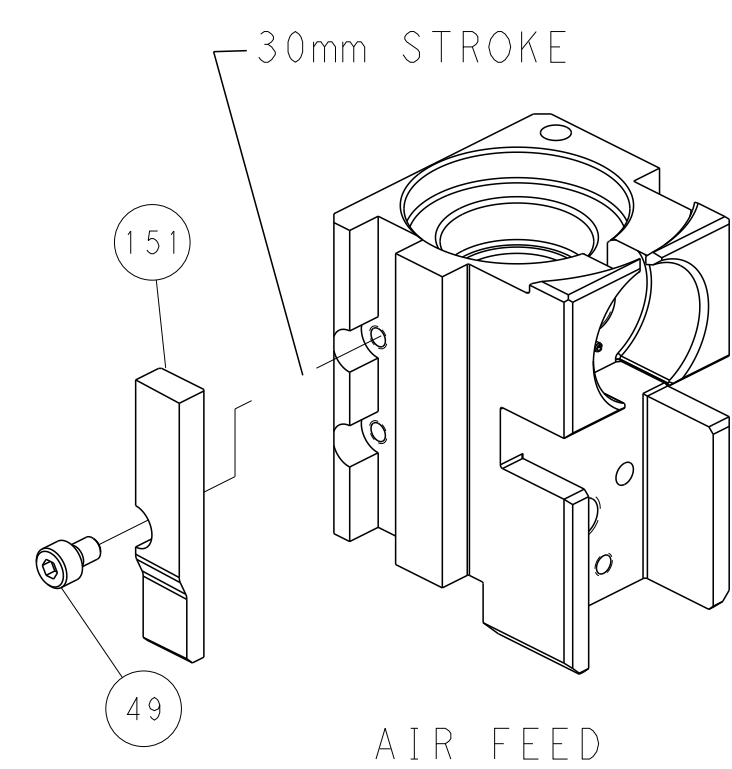


## FEED SPRING SETTING POSITION (SHOWN FROM REAR SIDE)

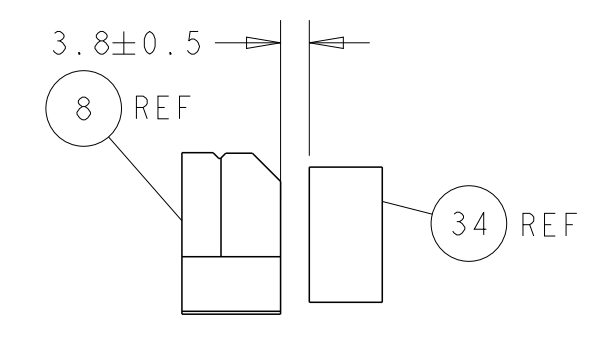
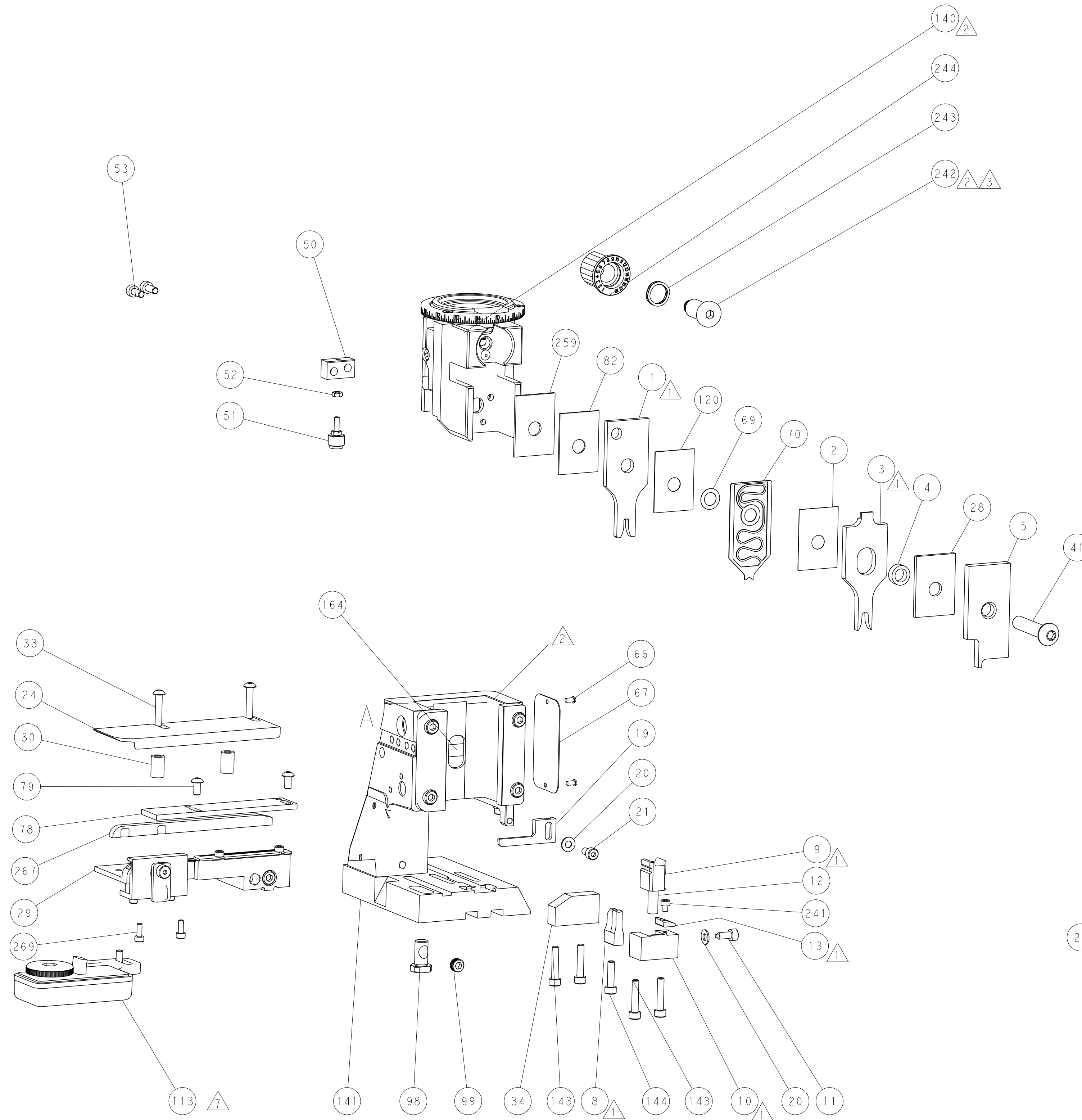


DETAIL A

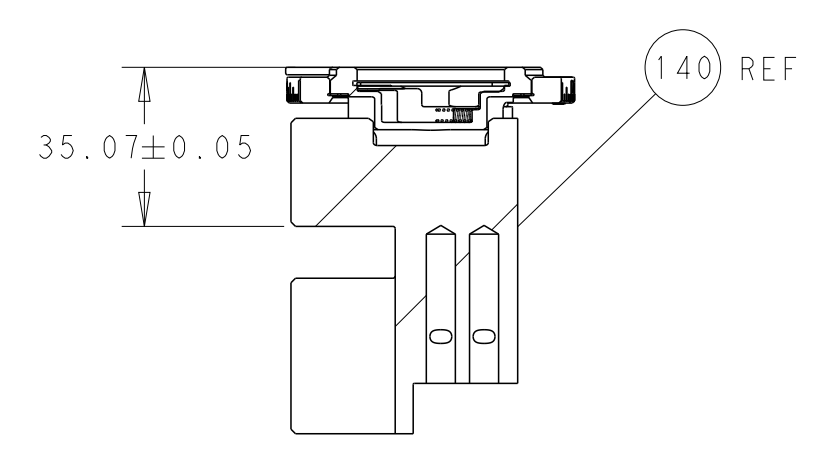
## CAM POSITION



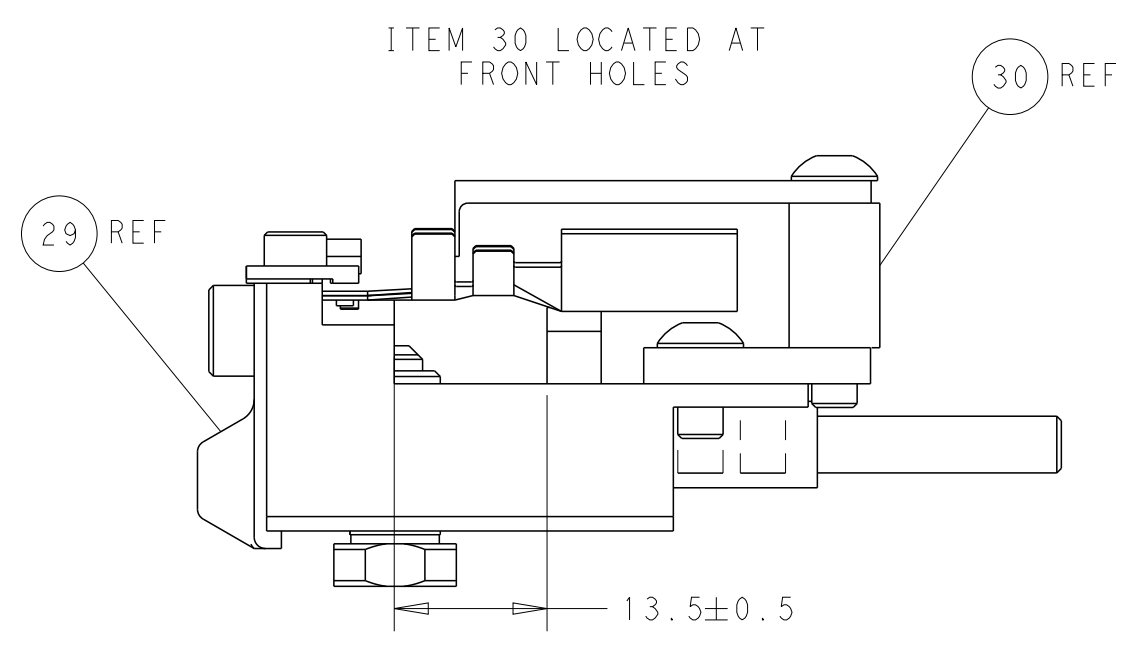
AIR FEED



TERMINAL SUPPORT LOCATION



RAM SET-UP



FEED TRACK POSITION  
GUIDE BY INSULATION BARREL

**PACIFIC VERSION**  
Shown on sheets 3 of 4 & 4 of 4  
(Atlantic version shown on sheets 1 of 4 & 2 of 4)

LOC	DIST	REVISIONS					
A	66	P	LYR	DESCRIPTION	DATE	OWN	APVD
		-		SEE SHEET 1			

<small>THIS DRAWING IS UNPUBLISHED. IT IS THE PROPERTY OF TYCOO ELECTRONICS CORPORATION AND IS NOT TO BE REPRODUCED OR TRANSMITTED IN ANY FORM OR BY ANY MEANS, ELECTRONIC OR MECHANICAL, INCLUDING PHOTOCOPYING, RECORDING, OR BY ANY INFORMATION STORAGE AND RETRIEVAL SYSTEM, WITHOUT THE WRITTEN PERMISSION OF TYCOO ELECTRONICS CORPORATION.</small>		DWN: X.ZHAO 16NOV2015 CHK: L.ZHANG 16NOV2015 APVD: H.GUO 16NOV2015	TE Connectivity Harrisburg, PA 17105-3608
DIMENSIONS: mm TOLERANCES UNLESS OTHERWISE SPECIFIED: 0 PLC ± 1 PLC ± 2 PLC ± 3 PLC ± 4 PLC ± ANGLES ± MATERIAL: - FINISH: -		NAME: Ocean Side Feed Applicator PRODUCT SPEC: - APPLICATION SPEC: - WEIGHT: - SCALE: 1:2	SIZE: A1 CAGE CODE: 00779 DRAWING NO: 2836095 SHEET: 4 OF 4 REV: A