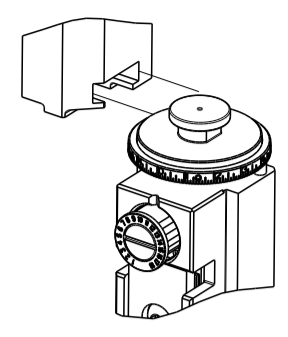


| PART NUMBER | REVISION | DESCRIPTION              | FEED TYPE |
|-------------|----------|--------------------------|-----------|
| 2836124-2   | F        | FINE CRIMP HEIGHT ADJUST | PNEUMATIC |
| 7-2836124-7 | D        | CRIMP TOOLING KIT        | -         |

ATLANTIC VERSION TERMINATOR  
 INTERFACE ADAPTER

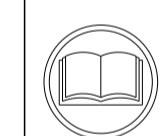


| APPLICATOR DATA |                |      |
|-----------------|----------------|------|
| CRIMP           | SIZE           | TYPE |
| WIRE            | 4.57 mm [1.80] | F    |
| INSUL           | -              | -    |

APPLICATOR INSTRUCTIONS  
 408-35042

| TERMINAL DATA: TE TERMINAL         |             | TE CRIMP SPECIFICATION    |             |
|------------------------------------|-------------|---------------------------|-------------|
| TERMINAL NAME: METRIMATE POWERBAND |             |                           |             |
| WIRE STRIP LENGTH                  |             | INSULATION DIAMETER RANGE |             |
| 6.73-7.49 mm [.265-.295 IN]        |             | ∅                         |             |
| TERMINAL APPLICATION SPECIFICATION | 114-10043   | -                         | -           |
| TERMINALS APPLIED                  |             |                           |             |
| TE TERMINAL                        | TE TERMINAL | TE TERMINAL               | TE TERMINAL |
| 213841-1                           | 213841-5    | 213843-1                  | 213843-5    |
| 213841-2                           | 213841-6    | 213843-2                  | 213843-6    |

| WIRE SIZE                    | CRIMP HEIGHT mm [INCH]         | CRIMP HEIGHT REFERENCE SETTING |
|------------------------------|--------------------------------|--------------------------------|
| 8 AWG                        | 2.93 +/- 0.19 [1.15 +/- .007]  | 4.8                            |
| 10AWG or 5.00mm <sup>2</sup> | 2.61 +/- 0.115 [.103 +/- .005] | 8.2                            |



- RECOMMENDED SPARE PARTS
  - REFER TO SUPPLIED INSTRUCTION SHEET FOR CLEANING, LUBRICATION AND STORAGE OF APPLICATOR.
  - CRIMP HEIGHT REFERENCE SETTING WAS THE SETTING USED WHEN THE APPLICATOR WAS QUALIFIED AT THE FACTORY. ADJUSTMENT MAY BE NECESSARY WHEN RUNNING APPLICATOR IN THE FIELD.
  - TERMINAL PITCH NOT COMPATIBLE WITH MECHANICAL FEED.
  - TERMINAL LUBRICANT IS RECOMMENDED.
6. UNLESS SPECIFIED OTHERWISE TORQUE VALUES SHALL BE USED PER DOCUMENT, 101-35000.

**\*WARNING**  
 ON INSTALLATION, SET WIRE DISC TO CRIMP HEIGHT REFERENCE SETTING FOR LARGEST WIRE SIZE. CRIMP HEIGHT REFERENCE SETTINGS GREATER THAN THE VALUE SHOWN MAY CAUSE DAMAGE TO THE CRIMP TOOLING, REFER TO THE INSTRUCTION SHEET FOR PROPER SETUP AND ADJUSTMENTS.

| LOC | DIST | REVISIONS |     |               |           |     |      |
|-----|------|-----------|-----|---------------|-----------|-----|------|
| A   | 66   | P         | LTN | DESCRIPTION   | DATE      | OWN | APVD |
|     |      | C1        |     | ECR-20-016527 | 19NOV2020 | JWC | RK   |
|     |      | D         |     | ECR-23-171278 | 04APR2023 | FZ  | GB   |
|     |      | E         |     | ECR-23-174034 | 02MAY2023 | JWC | JH   |
|     |      | F         |     | ECR-24-209128 | 16MAY2024 | ROY | TLE  |

|   |     |             |                                  |     |
|---|-----|-------------|----------------------------------|-----|
| - | 1   | 2-455888-9  | SPACER, CRIMPER -                | 259 |
| - | 1   | 2119641-1   | FEED CAM, AIR FEED               | 248 |
| - | 1   | 7-18023-7   | SCR, SKT HD CAP M3 X 4.0         | 241 |
| - | 1   | 2844940-1   | AIR FEED MODULE                  | 238 |
| - | REF | 994970-2    | COUNTER, MAGNETIC                | 164 |
| - | 1   | 2119955-1   | ASSY, LUBRICATOR, SIDE FEED      | 113 |
| - | 1   | 2844908-1   | SCREW, LOCKING                   | 99  |
| - | 1   | 2844907-1   | POST, LOCKING                    | 98  |
| - | 1   | 1-455888-4  | SPACER, CRIMPER -                | 82  |
| - | 1   | 1803607-3   | DOCUMENTATION PACKAGE            | 71  |
| - | 1   | 2119740-1   | TAG, IDENTIFICATION              | 67  |
| - | 2   | 2168078-1   | SCREW, DRIVE, RH, RoHS, 2 x .188 | 66  |
| - | 1   | 2168083-2   | SCR, SKT HD CAP, RoHS, M4 X 8.0  | 60  |
| - | 1   | 5-18022-5   | SCR, HEX HD CAP, M4 X 6.0        | 59  |
| - | 1   | 1338685-1   | PAWL, FEED                       | 56  |
| - | 4   | 2168083-3   | SCR, SKT HD CAP, RoHS, M4 X 12.0 | 54  |
| - | 2   | 1-2168083-0 | SCR, SKT HD CAP, RoHS, M4 X 10   | 53  |
| - | 1   | 5018030-1   | NUT, HEX, REG, RoHS, M3          | 52  |
| - | 1   | 811242-6    | BUMPER, HOLD DOWN                | 51  |
| - | 1   | 690753-2    | SPACER, TONKER                   | 50  |
| - | 1   | 18023-9     | SCR, SKT HD CAP M4 X 6.0         | 49  |
| - | 1   | 1803583-9   | APPLICATOR BASIC ASSEMBLY, SF    | 46  |
| - | 1   | 1803515-2   | RAM ASSEMBLY, SF ATLANTIC        | 44  |
| - | 1   | 1803602-2   | SCR, BHSC, RoHS (M8 X 40)        | 41  |
| - | 1   | 1752356-6   | SUPPORT, TERMINAL                | 34  |
| - | 2   | 2079383-5   | SCR, BHSC, RoHS (M4 X 20)        | 33  |
| - | 2   | 3-2844962-5 | SPACER, CYLINDRICAL, STRIP GUIDE | 30  |
| - | 1   | 2844992-1   | ASSEMBLY, STRIP GUIDE -          | 29  |
| - | 1   | 455888-5    | SPACER, CRIMPER -                | 28  |
| - | 1   | 1320928-2   | STRIP GUIDE -                    | 24  |
| - | 1   | 2168083-2   | SCR, SKT HD CAP, RoHS, M4 X 8.0  | 21  |
| - | 2   | 1-18028-2   | WASHER, FLAT, REG M4             | 20  |
| - | 1   | 2119533-1   | STRIPPER, SIDE FEED              | 19  |
| - | 1   | 2119806-1   | INSERT, SHEAR                    | 13  |
| - | 1   | 3-22280-3   | SPRING, COMPRESSION              | 12  |
| - | 1   | 1-356885-4  | STOP, SHEAR                      | 11  |
| - | 1   | 2-2119805-1 | SHEAR HOLDER, FRONT -            | 10  |
| - | 1   | 318707-1    | FLOATING SHEAR, FRONT            | 9   |
| - | 1   | 8-1633933-2 | ANVIL, COMBINATION               | 8   |
| - | -   | -           | -                                | 7   |
| - | -   | -           | -                                | 6   |
| - | 1   | 1-2119757-0 | DEPRESSOR, SHEAR                 | 5   |
| - | -   | -           | -                                | 4   |
| - | -   | -           | -                                | 3   |
| - | -   | -           | -                                | 2   |
| - | 1   | 1-456412-1  | CRIMPER, WIRE .180 F PREMIUM     | 1   |

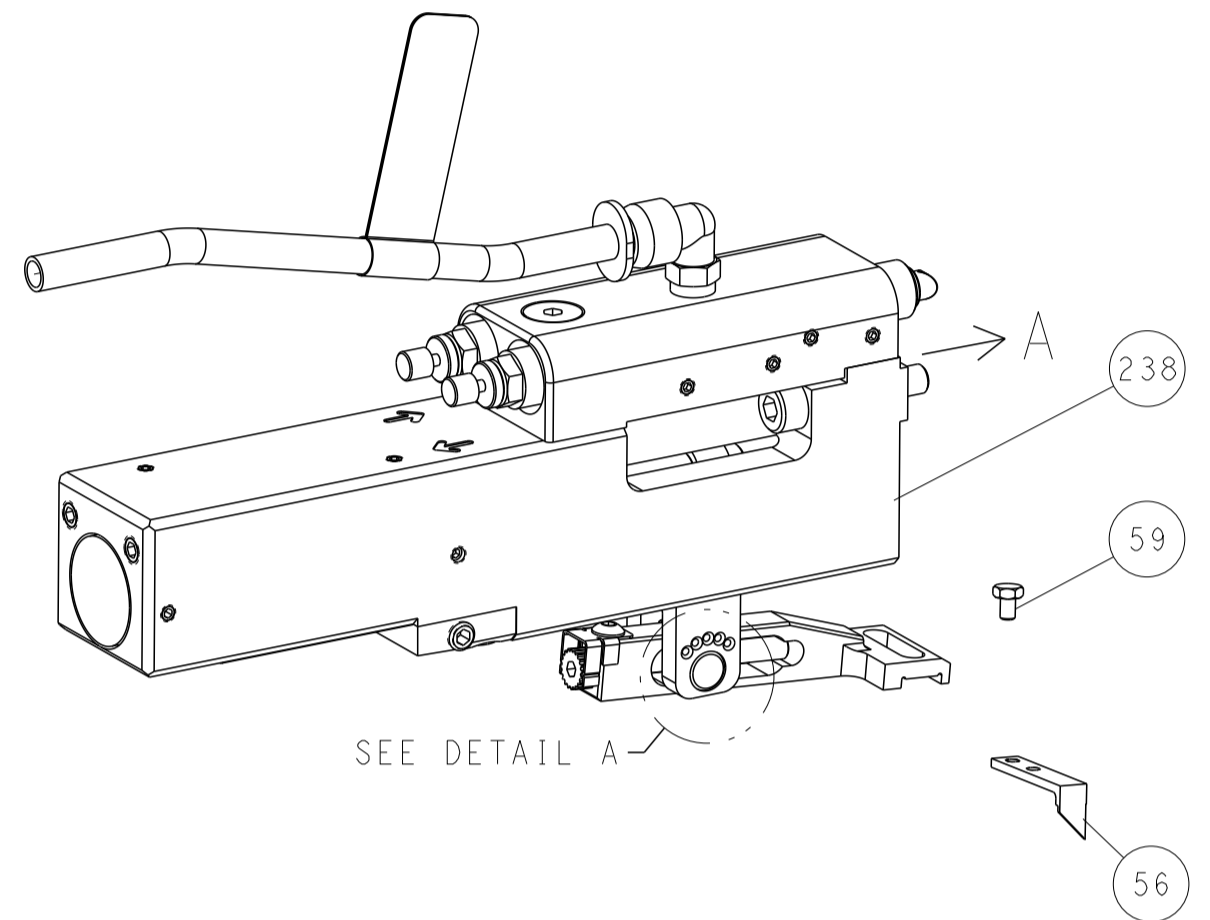
| DIMENSIONS: |         | TOLERANCES UNLESS OTHERWISE SPECIFIED: |         | APPROVED |           | NAME       |               |
|-------------|---------|--|---------|----------|-----------|------------|---------------|
| mm          | 0 PLC ± | 1 PLC ±                                | 2 PLC ± | 3 PLC ±  | 4 PLC ±   | ANGLES ±   | FINISH ±      |
|             |         |  |         |          |           |            |               |
| MATERIAL    |         | WEIGHT                                 |         | SIZE     | CAGE CODE | DRAWING NO | RESTRICTED TO |
|             |         |  |         | A1       | 00779     | 2836124    |               |

Customer Accessible Production Drawing SCALE 1:2 SHEET 1 OF 4 REV F

| LOC | DIST | REVISIONS |     |             |      |     |      |
|-----|------|-----------|-----|-------------|------|-----|------|
|     |      | P         | LTN | DESCRIPTION | DATE | OWN | APVD |
| A   | 66   | -         | -   | SEE SHEET 1 | -    | -   | -    |

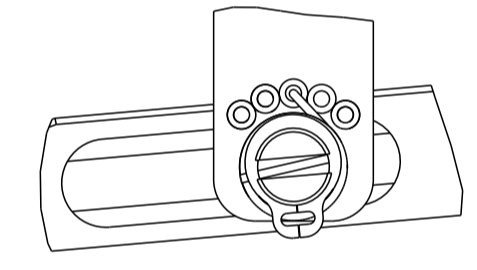
# FEED TYPE

## PNEUMATIC



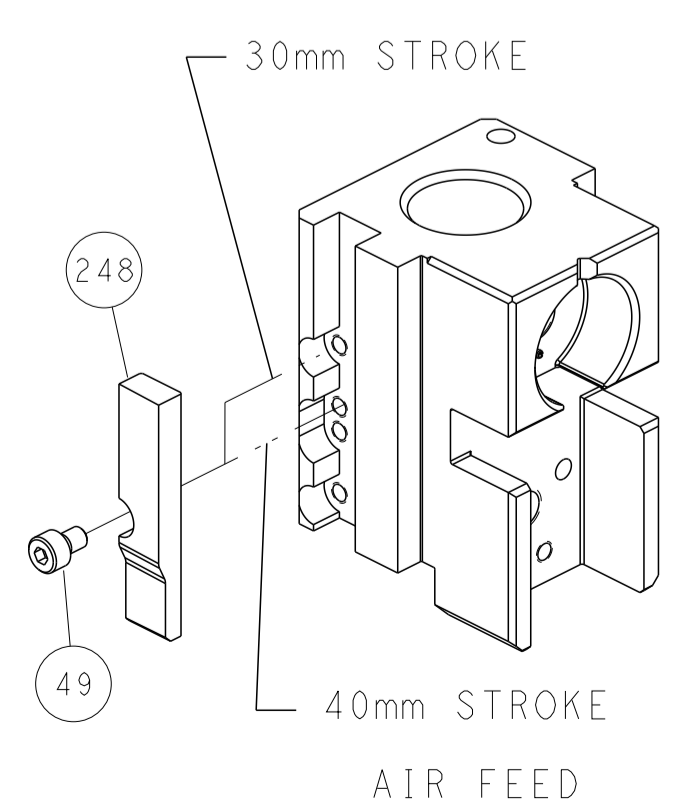
SEE DETAIL A

## FEED SPRING SETTING POSITION (SHOWN FROM REAR SIDE)

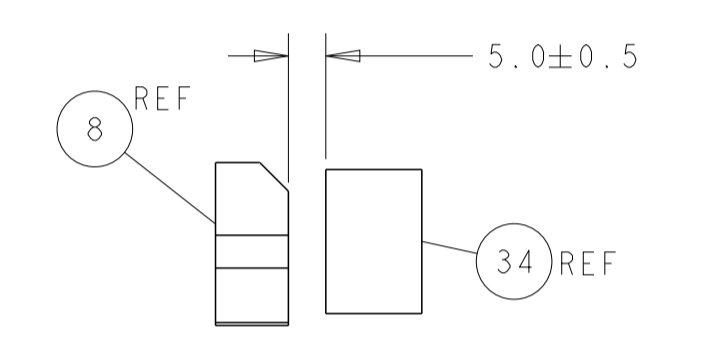
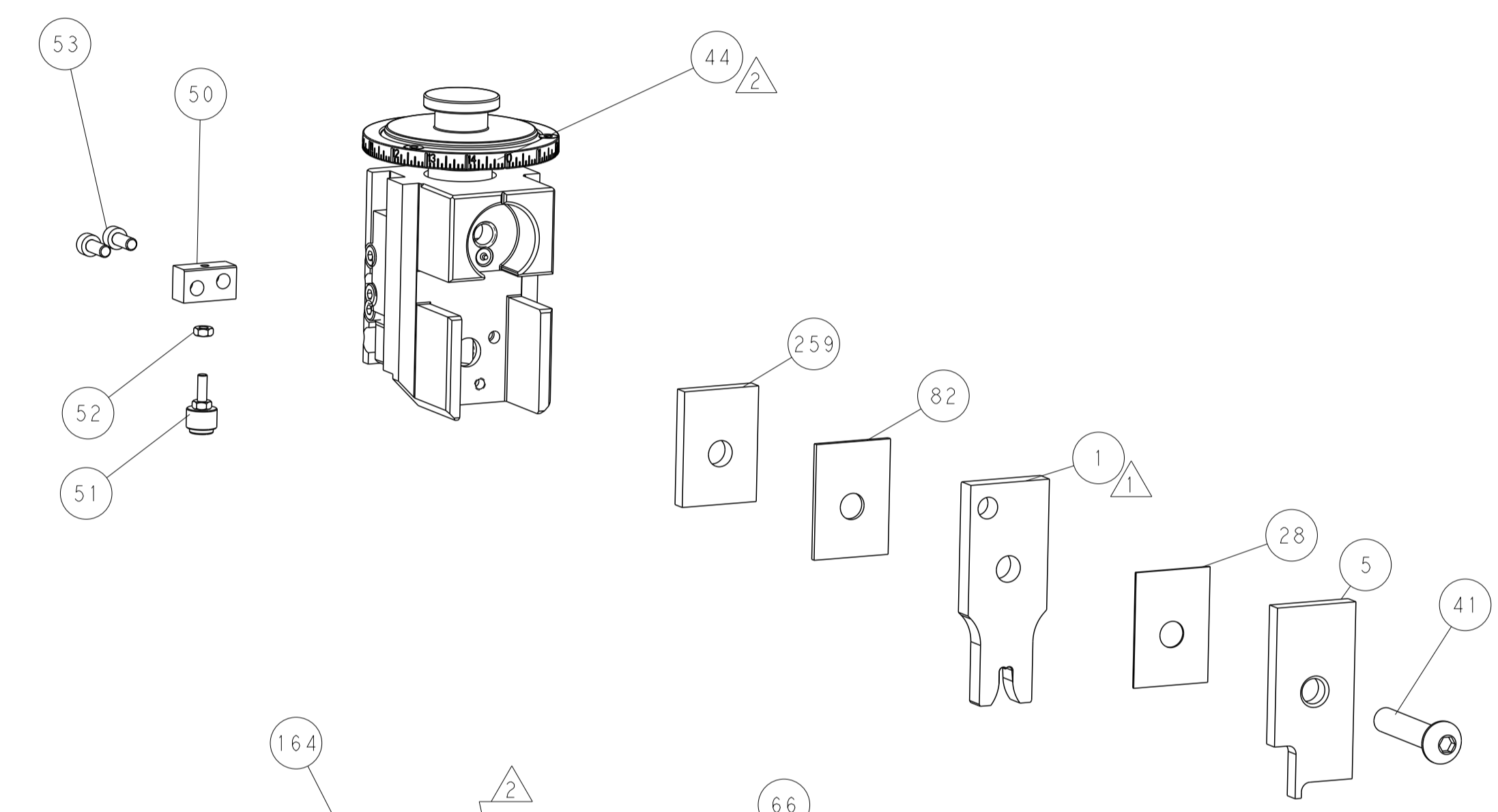


DETAIL A

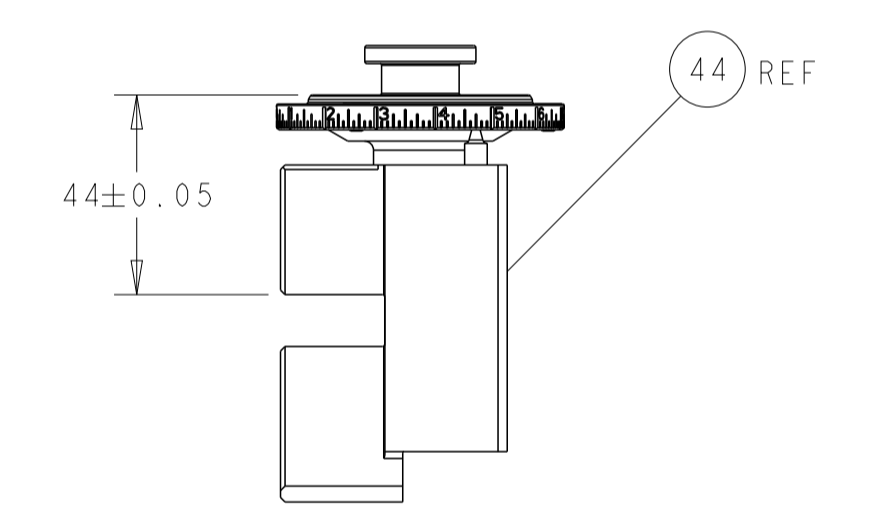
## CAM POSITION



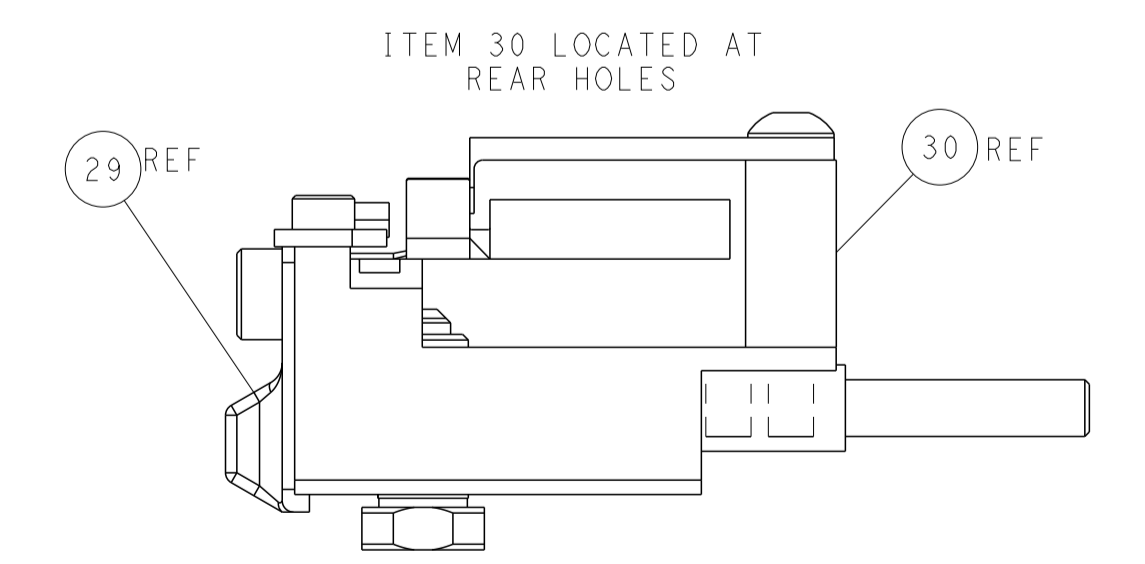
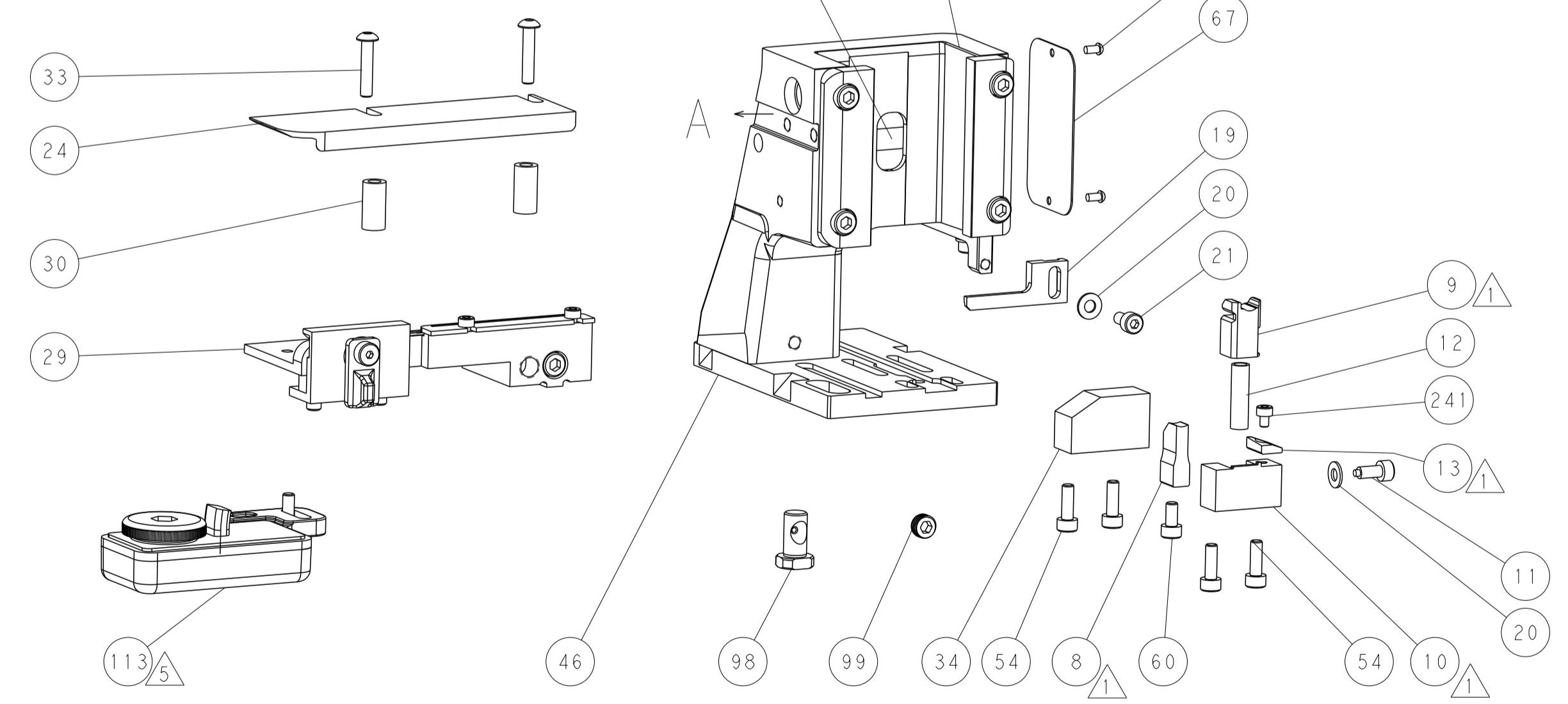
AIR FEED



TERMINAL SUPPORT LOCATION



SCALE 3:5  
RAM SET-UP



FEED TRACK POSITION  
GUIDE BY WIRE BARREL

|   |  |   |   |
|---|--|---|---|
| <small>THIS DRAWING IS UNPUBLISHED. RELEASED FOR PUBLICATION BY TYCO ELECTRONICS CORPORATION. ALL RIGHTS RESERVED.</small>            |  | DWN Y. YIN 02AUG2016<br>CHK G. BAILEY 02AUG2016<br>APVD K. ZHANG 02AUG2016  | TE Connectivity<br>Harrisburg, PA 17105-3608  |
| DIMENSIONS: mm<br>TOLERANCES UNLESS OTHERWISE SPECIFIED:<br>0 PLC ±<br>1 PLC ±<br>2 PLC ±<br>3 PLC ±<br>4 PLC ±<br>ANGLES ±<br>FINISH |  | NAME Ocean Side Feed Applicator<br>PRODUCT SPEC<br>APPLICATION SPEC<br>SIZE CAGE CODE DRAWING NO<br>WEIGHT A1 00779 C=2836124 | RESTRICTED TO<br>SCALE 1:2 SHEET 2 OF 4 REV F |
| Customer Accessible Production Drawing  |  |   |   |