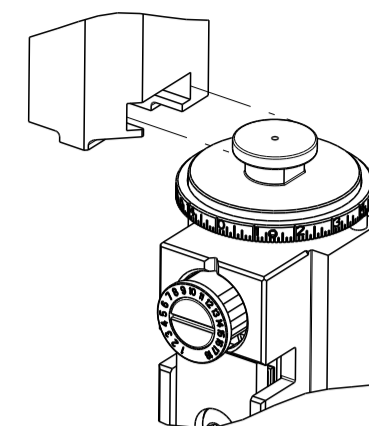


PART NUMBER	REVISION	DESCRIPTION	FEED TYPE
2836132-2	D	FINE CRIMP HEIGHT ADJUST	PNEUMATIC
7-2836132-2	D	PNEUMATIC AND CRIMP TOOLING KIT	PNEUMATIC
7-2836132-7	A	CRIMP TOOLING KIT	-

ATLANTIC VERSION TERMINATOR INTERFACE ADAPTER



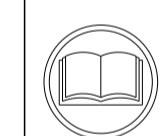
APPLICATOR DATA		
CRIMP	SIZE	TYPE
WIRE	2.92 mm [.115]	F
INSUL	6.30 mm [.248]	O

APPLICATOR INSTRUCTIONS 408-35042

TERMINAL DATA: DELPHI TERMINAL DELPHI CRIMP SPECIFICATION	
TERMINAL NAME: TERMINAL	
WIRE STRIP LENGTH	TERMINAL INSULATION DIAMETER RANGE
5.26-6.02 mm [.207-.237 IN]	∅ 2.56-3.59 mm [.101-.141 IN]
TERMINAL APPLICATION CRIMP INFORMATION SHEET PAGE 12 OF 16 Rev 2013-10-30 SPECIFICATION	

TERMINALS APPLIED				SEAL INSULATION DIAMETER RANGE
TE TERMINAL	DELPHI TERMINAL	TE SEAL	DELPHI SEAL	∅ 2.00-3.00
2113928-1	12048451	2113929-1	15324988	

WIRE SIZE	CRIMP HEIGHT mm [INCH]	CRIMP HEIGHT REFERENCE SETTING
2.50mm2	1.80 +/- 0.05 [0.071 +/- .002]	8.3



- RECOMMENDED SPARE PARTS
- REFER TO SUPPLIED INSTRUCTION SHEET FOR CLEANING, LUBRICATION AND STORAGE OF APPLICATOR.
- APPLY PART NUMBER 2-23419-6 LOCTITE TO THREADS OF ITEM 242.
- CRIMP HEIGHT REFERENCE SETTING WAS THE SETTING USED WHEN THE APPLICATOR WAS QUALIFIED AT THE FACTORY. ADJUSTMENT MAY BE NECESSARY WHEN RUNNING APPLICATOR IN THE FIELD.
- TERMINAL PITCH NOT COMPATIBLE WITH MECHANICAL FEED.
- 6. UNLESS SPECIFIED OTHERWISE TORQUE VALUES SHALL BE USED PER DOCUMENT, 101-35000.

***WARNING**
ON INSTALLATION, SET WIRE DISC TO CRIMP HEIGHT REFERENCE SETTING FOR LARGEST WIRE SIZE. CRIMP HEIGHT REFERENCE SETTINGS GREATER THAN THE VALUE SHOWN MAY CAUSE DAMAGE TO THE CRIMP TOOLING, REFER TO THE INSTRUCTION SHEET FOR PROPER SETUP AND ADJUSTMENTS.

ATLANTIC VERSION
Shown on sheets 1 of 4 & 2 of 4
(Pacific version shown on sheets 3 of 4 & 4 of 4)

LOC	DIST	REVISIONS					
A	66	P	LTN	DESCRIPTION	DATE	OWN	APVD
		B		ECR-17-003144	03MAR2017	MR	GB
		C		ECR-19-002396	14FEB2019	FJ	YY
		D		ECR-22-126293	11JAN2022	JWC	TE

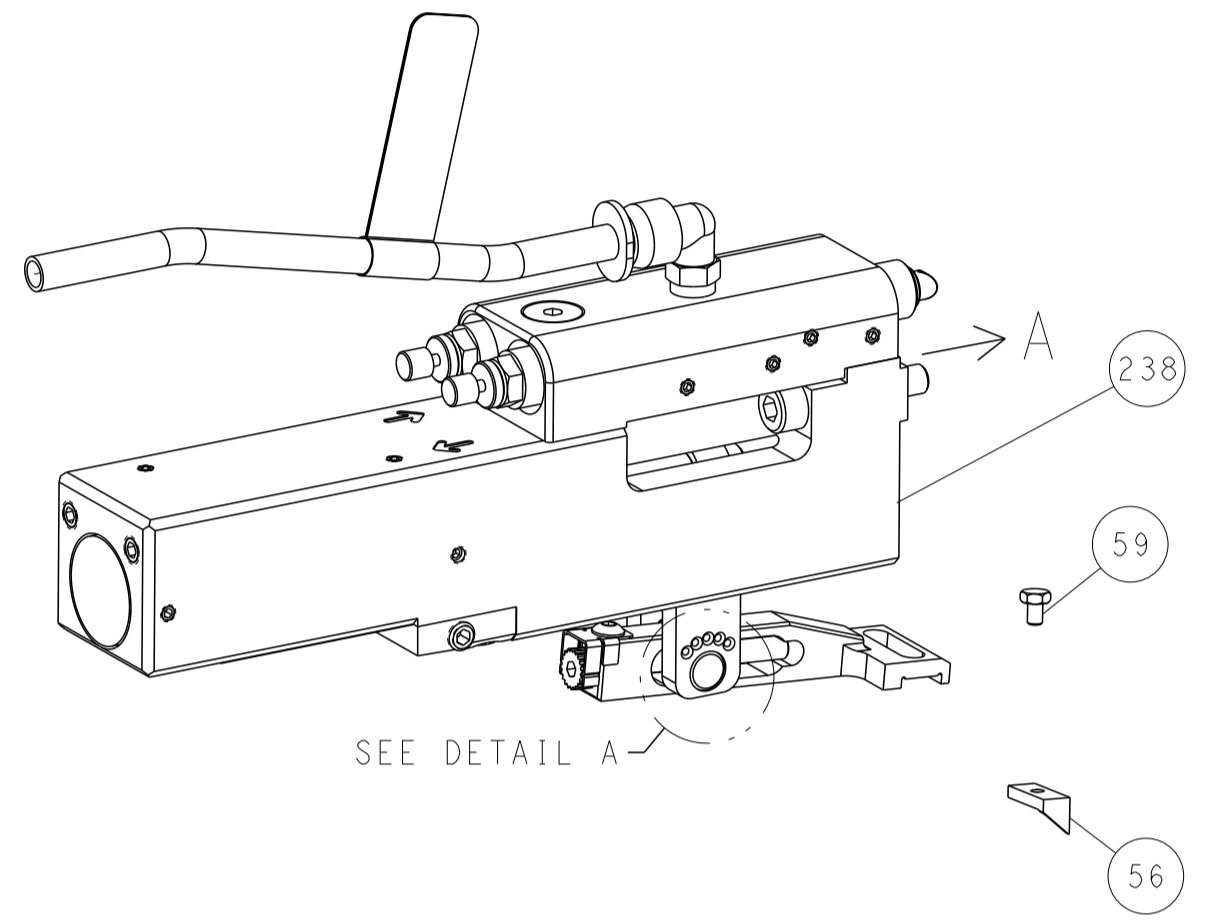
-	1	1	2119641-1	FEED CAM, AIR FEED	248	
-	1	1	2119082-6	CAM, SNAIL, INSULATION ADJUSTMENT	244	
-	1	1	2079764-1	WASHER, WAVE SPRING, CREST-TO-CREST	243	
-	1	1	2119083-1	RETAINER, INSULATION DIAL	242	
-	1	1	2844940-1	AIR FEED MODULE	238	
-	1	1	1-356885-5	STOP, SHEAR	237	
-	REF	REF	994970-2	COUNTER, MAGNETIC	164	
-	2	2	2168400-1	SHCS, LOW HEAD, RoHS, M4 X 12	143	
-	1	1	1-22281-8	SPRING, COMPRESSION	121	
-	1	1	2844908-1	SCREW, LOCKING	99	
-	1	1	2844907-1	POST, LOCKING	98	
-	1	1	690438-6	FRONT STRIP GUIDE	96	
-	2	2	2168083-1	SCR, SKT HD CAP, RoHS, M3 X 8.0	95	
-	1	1	2168083-6	SCR, SKT HD CAP, RoHS, M5 X 65	93	
-	1	1	455888-5	SPACER, CRIMPER	82	
-	1	1	8-240641-5	SPACER	81	
-	1	1	1803607-3	DOCUMENTATION PACKAGE	71	
-	1	1	2119740-1	TAG, IDENTIFICATION	67	
-	2	2	2168078-1	SCREW, DRIVE, RH, RoHS, 2 x .188	66	
-	2	2	2-18032-5	SCR, SET, FLT PNT, M5 X 20.0	61	
-	1	1	2168083-2	SCR, SKT HD CAP, RoHS, M4 X 8.0	60	
-	1	1	5-18022-5	SCR, HEX HD CAP, M4 X 6.0	59	
-	1	1	1338683-1	FEED PAWL	56	
-	2	2	2-2168083-5	SCR, SKT HD CAP, RoHS, M4 X 14	53	
-	1	1	18023-9	SCR, SKT HD CAP M4 X 6.0	49	
-	1	1	1803583-9	APPLICATOR BASIC ASSEMBLY, SF	46	
-	1	1	1803515-1	RAM ASSEMBLY, SF ATLANTIC	44	
-	1	1	1803602-1	SCR, BHSC, RoHS (M8 X 25)	41	
-	2	2	1-2168083-3	SCR, SKT HD CAP, RoHS, M3 X 16	33	
-	1	1	1-2305692-9	PLATE, REAR STRIP GUIDE	29	
-	2	2	22284-1	SPRING, COMPRESSION	27	
-	1	1	356835-1	LEVER, DRAG RELEASE	26	
-	1	1	240792-1	DRAG, TERMINAL	25	
-	1	1	3-189124-8	GUIDE, FRONT STRIP	24	
-	1	1	980371-4	SCR, SKT HD SHLDR 5.0 DIA X 6.0	23	
-	1	1	2168083-2	SCR, SKT HD CAP, RoHS, M4 X 8.0	21	
-	1	1	1-18028-2	WASHER, FLAT, REG M4	20	
-	1	1	2119533-2	STRIPPER, SIDE FEED	19	
-	2	2	1-18028-2	WASHER, FLAT, REG M4	18	
-	1	1	1673662-1	FLOATING SHEAR, REAR	17	
-	2	2	1-2168083-1	SCR, SKT HD CAP, RoHS, M3 X 6	16	
-	1	1	1673661-1	SHEAR PLATE, REAR	15	
-	1	1	1803345-1	SHEAR HOLDER, REAR	14	
-	2	2	3-22280-3	SPRING, COMPRESSION	12	
-	-	-	-	-	10	
-	-	-	-	-	9	
-	1	2	1	7-1803171-7	ANVIL, COMBINATION	8
-	-	-	-	-	7	
-	1	1	1	1-690468-5	DEPRESSOR SHEAR, REAR	6
-	-	-	-	-	5	
-	1	1	1	2-238009-9	BLOCK, FL CRIMPER SPACER	4
-	1	2	1	2-1803248-3	CRIMPER, INSULATION O PREMIUM	3
-	1	1	1	1-455888-4	SPACER, CRIMPER	2
-	1	2	1	2-1803241-8	CRIMPER, WIRE F	1

DIMENSIONS:		TOLERANCES UNLESS OTHERWISE SPECIFIED:		MATERIAL:		FINISH:		WEIGHT:		SCALE:		SHEET:		REV:	
mm	0 PLC ±	1 PLC ±	2 PLC ±	3 PLC ±	4 PLC ±	ANGLES	FINISH			A1	00779	1	4	D	

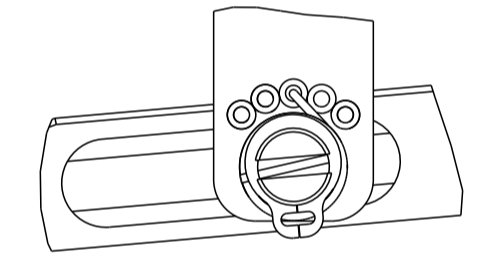
LOC	DIST	REVISIONS					
		P	LTN	DESCRIPTION	DATE	OWN	APVD
A	66	-	-	SEE SHEET 1	-	-	-

FEED TYPE

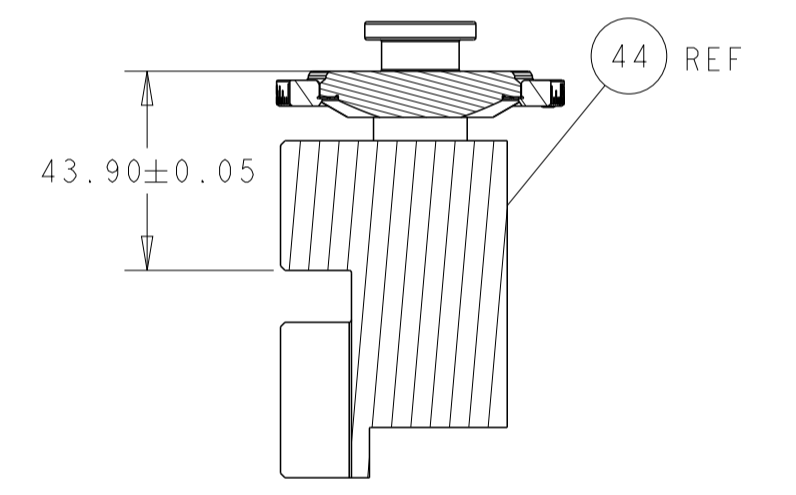
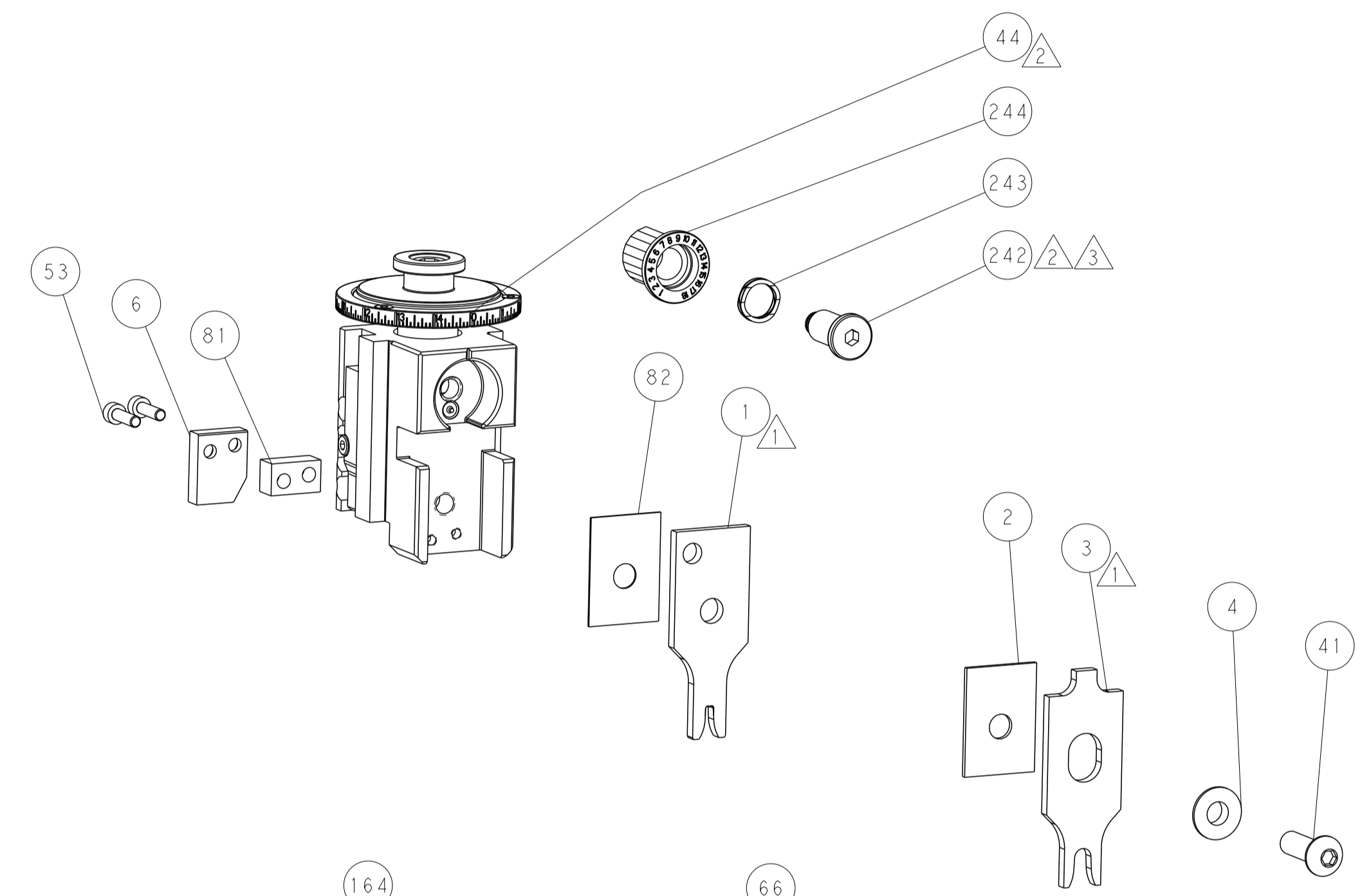
PNEUMATIC



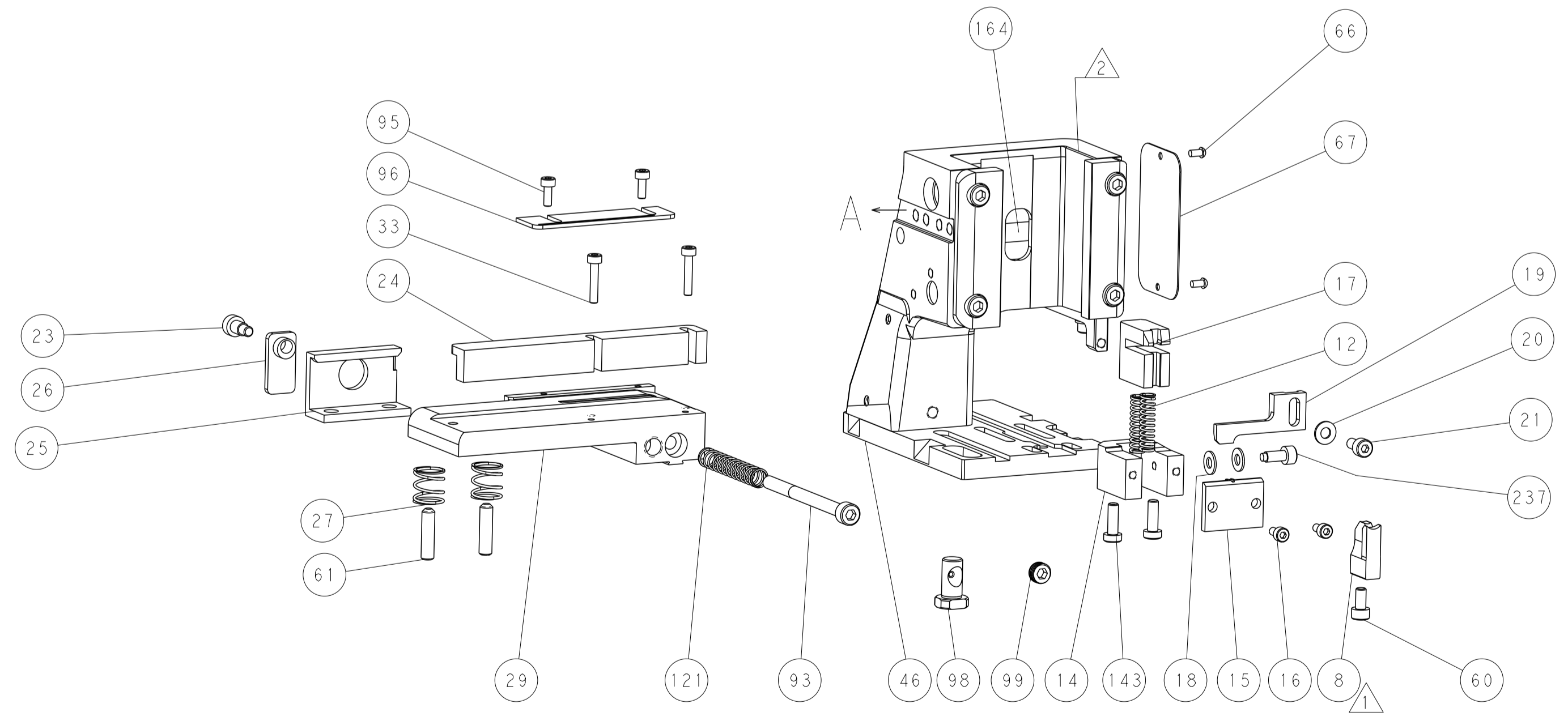
FEED SPRING SETTING POSITION
(SHOWN FROM REAR SIDE)



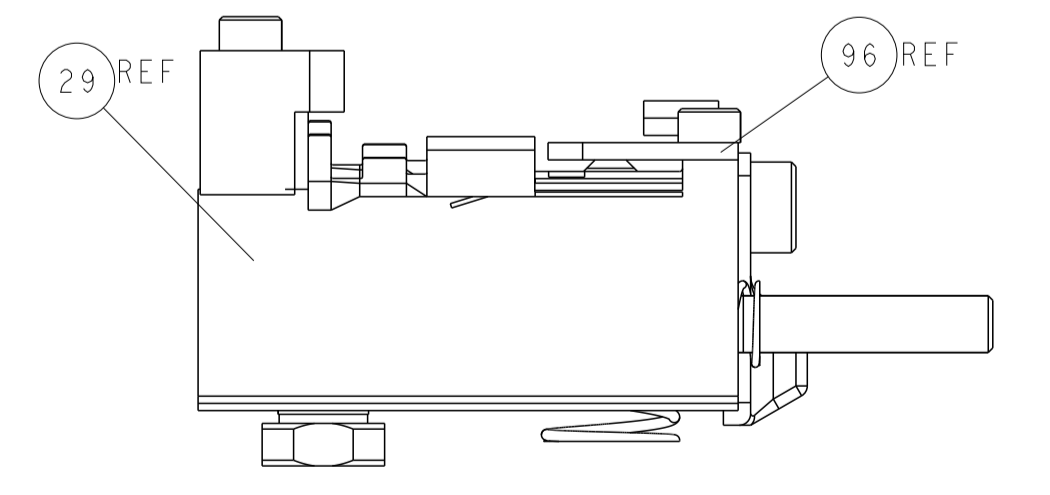
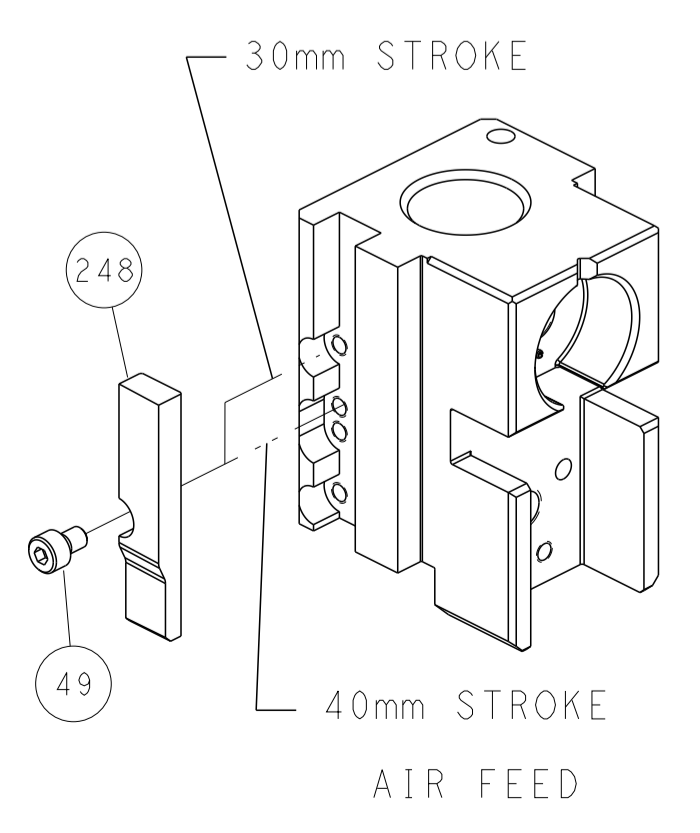
DETAIL A



RAM SET-UP



CAM POSITION



FEED TRACK POSITION

ATLANTIC VERSION
 Shown on sheets 1 of 4 & 2 of 4
 (Pacific version shown on sheets 3 of 4 & 4 of 4)

<small>THIS DRAWING IS UNPUBLISHED. RELEASED FOR PUBLICATION. IT IS THE PROPERTY OF TYCO ELECTRONICS CORPORATION. IT IS TO BE USED ONLY FOR THE PURPOSES AND IN THE QUANTITIES SPECIFIED IN THE ORDER. IT IS TO BE RETURNED TO TYCO ELECTRONICS CORPORATION IF NOT SO USED.</small>		DWN BOB_HIGMAN 28DEC2015 CHK T_ELBIN 28DEC2015 APVD T_ELBIN 28DEC2015	TE Connectivity Harrisburg, PA 17105-3608
DIMENSIONS: mm TOLERANCES UNLESS OTHERWISE SPECIFIED: 0 PLC ± 1 PLC ± 2 PLC ± 3 PLC ± 4 PLC ± ANGLES ± FINISH ±		NAME Ocean Side Feed Applicator PRODUCT SPEC APPLICATION SPEC SIZE CAGE CODE DRAWING NO A1 00779 C=2836132	RESTRICTED TO SCALE 1:2 SHEET 2 OF 4 REV D
MATERIAL:		WEIGHT:	Customer Accessible Production Drawing

THIS DRAWING IS UNPUBLISHED.	RELEASED FOR PUBLICATION		
COPYRIGHT 20 BY TYCO ELECTRONICS CORPORATION. ALL RIGHTS RESERVED.			
PART NUMBER	REVISION	DESCRIPTION	FEED TYPE
2-2836132-2	D	FINE CRIMP HEIGHT ADJUST	PNEUMATIC
7-2836132-7	A	CRIMP TOOLING KIT	-

PACIFIC VERSION TERMINATOR
INTERFACE ADAPTER



APPLICATOR DATA		
CRIMP	SIZE	TYPE
WIRE	2.92 mm [.115]	F
INSUL	6.30 mm [.248]	O
APPLICATOR INSTRUCTIONS 408-35042		

TERMINAL DATA: DELPHI TERMINAL DELPHI CRIMP SPECIFICATION	
TERMINAL NAME: TERMINAL	
WIRE STRIP LENGTH 5.26-6.02 mm [.207-.237 IN]	TERMINAL INSULATION DIAMETER RANGE Ø2.56-3.59 mm [.101-.141 IN]
TERMINAL APPLICATION SPECIFICATION CRIMP INFORMATION SHEET PAGE 12 OF 16 Rev 2013-10-30	

TERMINALS APPLIED				SEAL INSULATION DIAMETER RANGE
TE TERMINAL	DELPHI TERMINAL	TE SEAL	DELPHI SEAL	Ø 2.00-3.00
2113928-1	12048451	2113929-1	15324988	

WIRE SIZE	CRIMP HEIGHT mm [INCH]	CRIMP HEIGHT REFERENCE SETTING
2.50mm2	1.80 +/- 0.05 [.071 +/- .002]	8.3



- 1 RECOMMENDED SPARE PARTS
- 2 REFER TO SUPPLIED INSTRUCTION SHEET FOR CLEANING, LUBRICATION AND STORAGE OF APPLICATOR.
- 3 APPLY PART NUMBER 2-23419-6 LOCTITE TO THREADS OF ITEM 242.
- 4 CRIMP HEIGHT REFERENCE SETTING WAS THE SETTING USED WHEN THE APPLICATOR WAS QUALIFIED AT THE FACTORY. ADJUSTMENT MAY BE NECESSARY WHEN RUNNING APPLICATOR IN THE FIELD.
- 5 TERMINAL PITCH NOT COMPATIBLE WITH MECHANICAL FEED.
6. UNLESS SPECIFIED OTHERWISE TORQUE VALUES SHALL BE USED PER DOCUMENT, 101-35000.

***WARNING**
ON INSTALLATION, SET WIRE DISC TO CRIMP HEIGHT REFERENCE SETTING FOR LARGEST WIRE SIZE. CRIMP HEIGHT REFERENCE SETTINGS GREATER THAN THE VALUE SHOWN MAY CAUSE DAMAGE TO THE CRIMP TOOLING, REFER TO THE INSTRUCTION SHEET FOR PROPER SETUP AND ADJUSTMENTS.

PACIFIC VERSION
Shown on sheets 3 of 4 & 4 of 4
(Atlantic version shown on sheets 1 of 4 & 2 of 4)

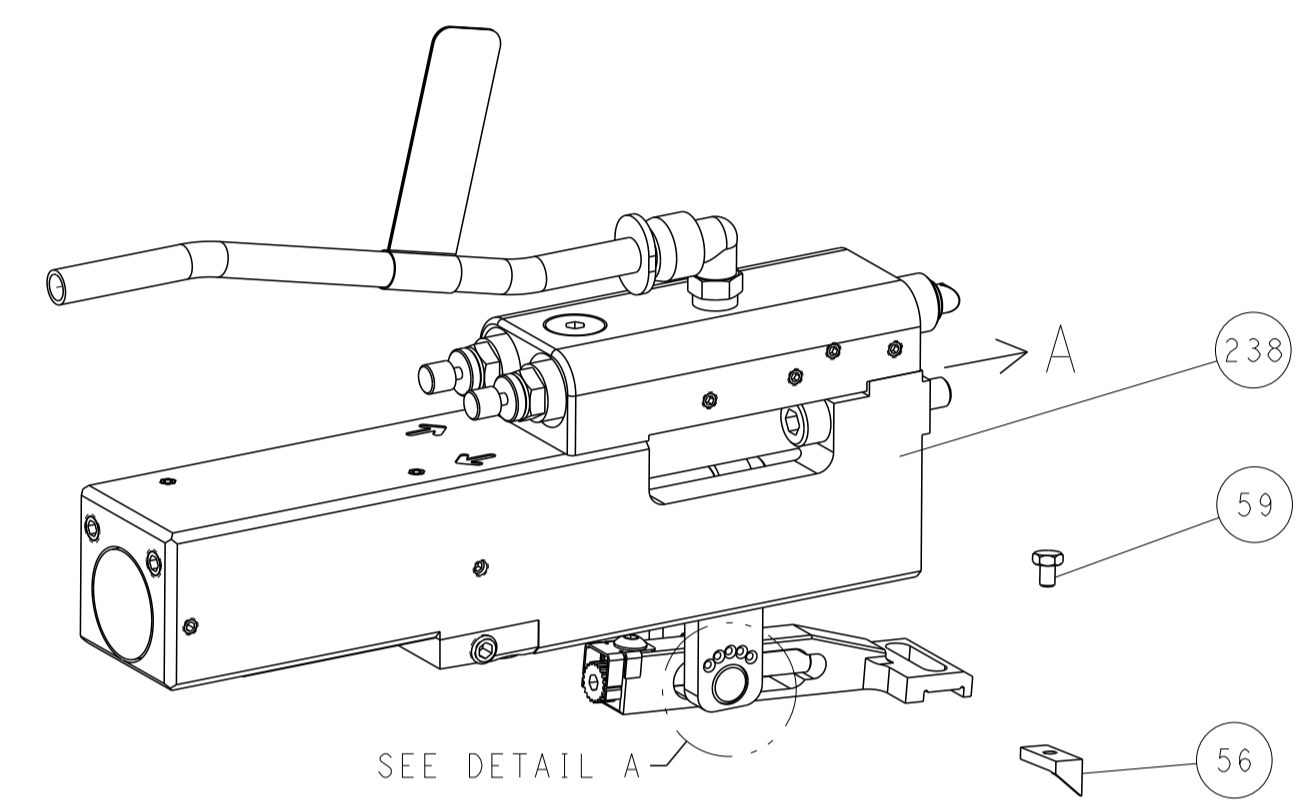
LOC	DIST	REV	DATE	BY	APPD
A	66				

REVISIONS					
REV	DATE	DESCRIPTION	DATE	BY	APPD
-	-	SEE SHEET 1	-	-	-
-	1	2119082-6			244
-	1	2079764-1			243
-	1	2119083-1			242
-	1	2844940-1			238
-	1	1-356885-5			237
-	REF	994970-2			164
-	1	2119641-2			151
-	1	2168083-8			144
-	2	2168400-1			143
-	1	1-1803583-0			141
-	1	1803516-1			140
-	1	1-22281-8			121
-	1	2844908-1			99
-	1	2844907-1			98
-	1	690438-6			96
-	2	2168083-1			95
-	1	2168083-6			93
-	1	455888-5			82
-	1	8-240641-5			81
-	1	1803607-3			71
-	1	2119740-1			67
-	2	2168078-1			66
-	2	2-18032-5			61
-	1	5-18022-5			59
-	1	1338683-1			56
-	2	2-2168083-5			53
-	1	18023-9			49
-	1	1803602-1			41
-	2	1-2168083-3			33
-	1	1-2305692-9			29
-	2	22284-1			27
-	1	356835-1			26
-	1	240792-1			25
-	1	3-189124-8			24
-	1	980371-4			23
-	1	2168083-2			21
-	1	1-18028-2			20
-	1	2119533-2			19
-	2	1-18028-2			18
-	1	1673662-1			17
-	2	1-2168083-1			16
-	1	1673661-1			15
-	1	1803345-1			14
-	2	3-22280-3			12
-	-	-			10
-	-	-			9
1	1	7-1803171-7			8
-	-	-			7
-	1	1-690468-5			6
-	-	-			5
-	1	2-238009-9			4
1	1	2-1803248-3			3
-	1	1-455888-4			2
1	1	2-1803241-8			1

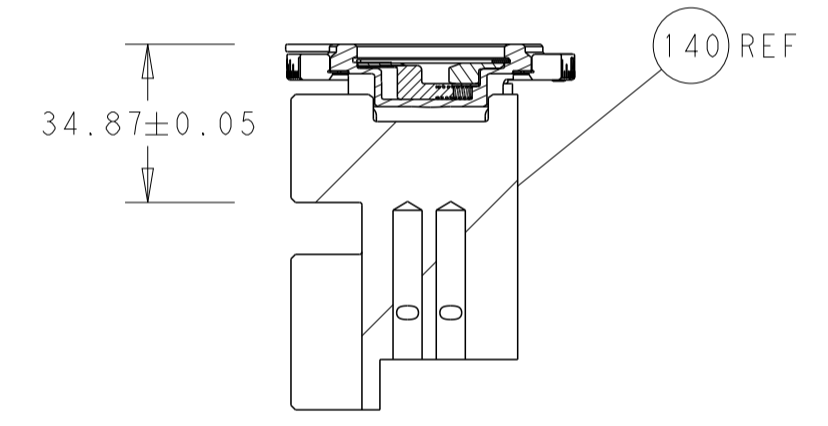
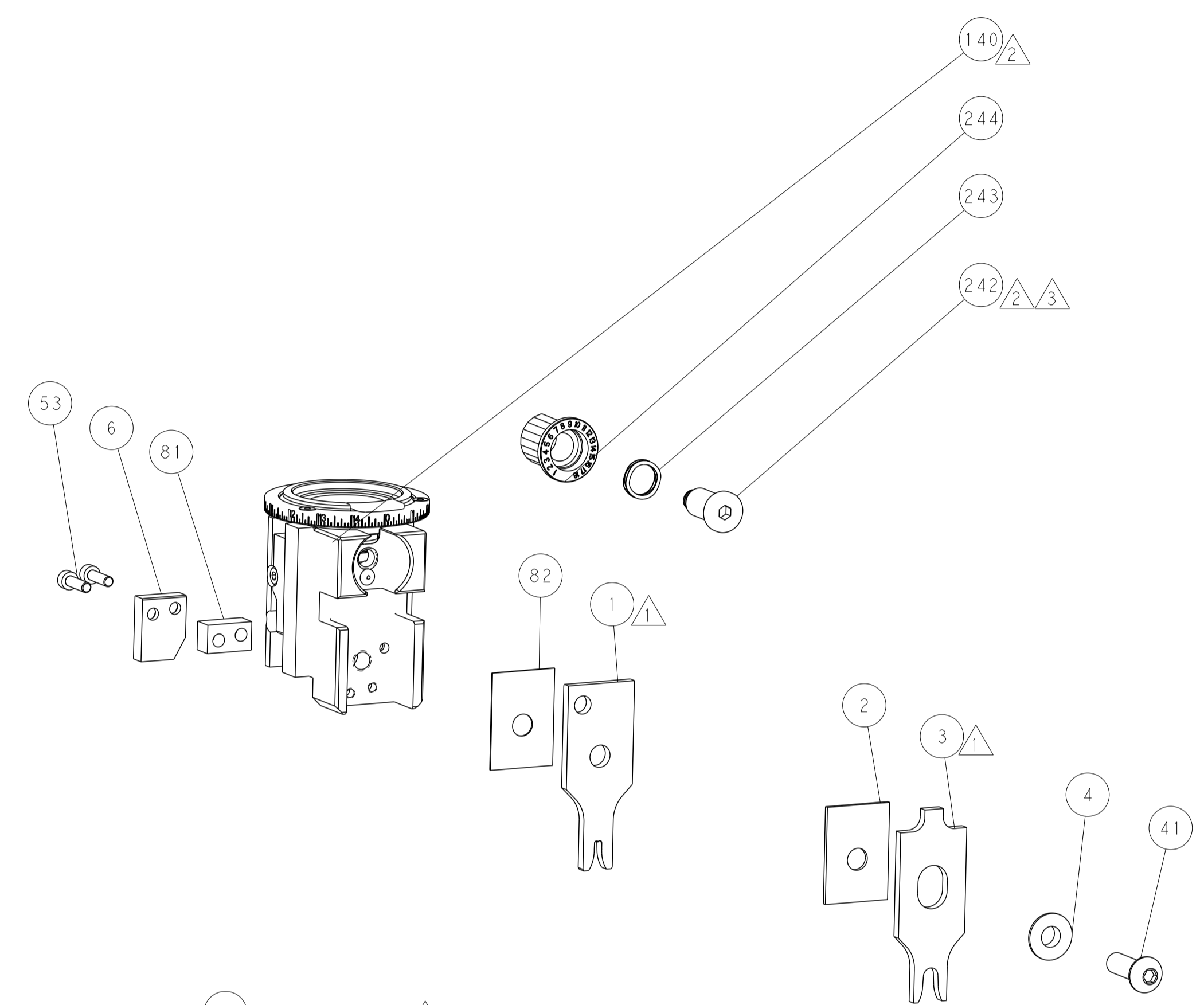
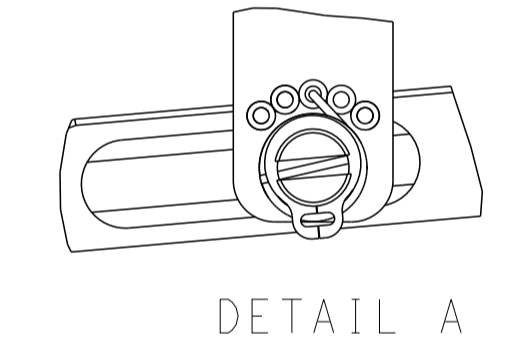
DIMENSIONS:		TOLERANCES UNLESS OTHERWISE SPECIFIED:		DWG: BOB HIGMAN 28DEC2015		TE Connectivity Harrisburg, PA 17105-3608	
mm	0 PLC ±	1 PLC ±	2 PLC ±	3 PLC ±	4 PLC ±	APVD: T. ELBIN 28DEC2015	NAME: Ocean Side Feed Applicator
MATERIAL:		FINISH:		WEIGHT:		SIZE: A1 00779 C=2836132	
Customer Accessible Production Drawing				SCALE: 1:2		SHEET 3 OF 4 REV D	

LOC	DIST	REVISIONS					
		P	LTN	DESCRIPTION	DATE	OWN	APVD
A	66	-	-	SEE SHEET 1	-	-	-

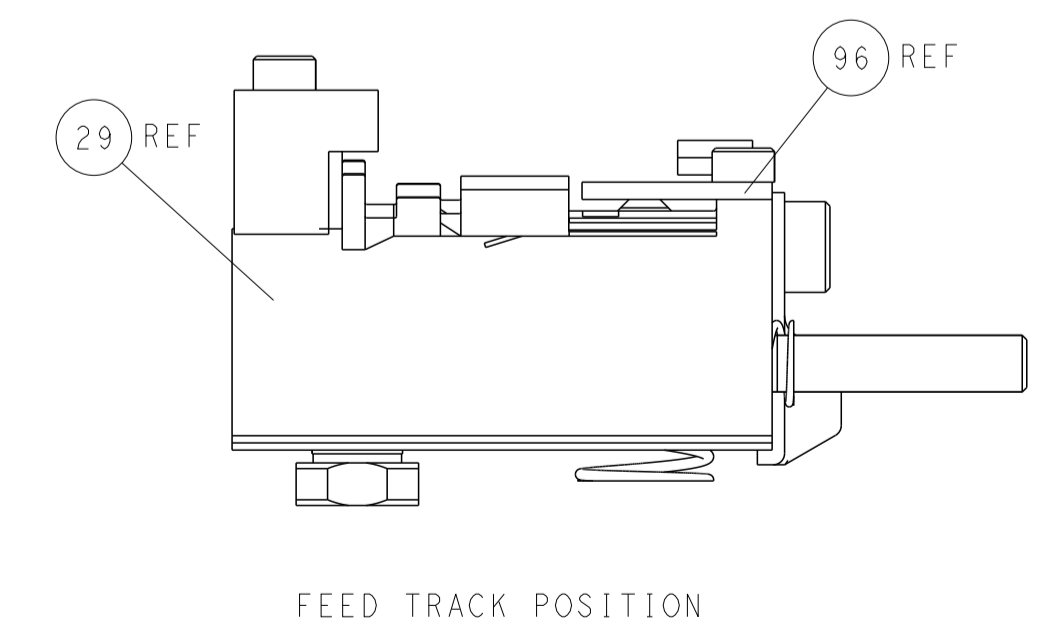
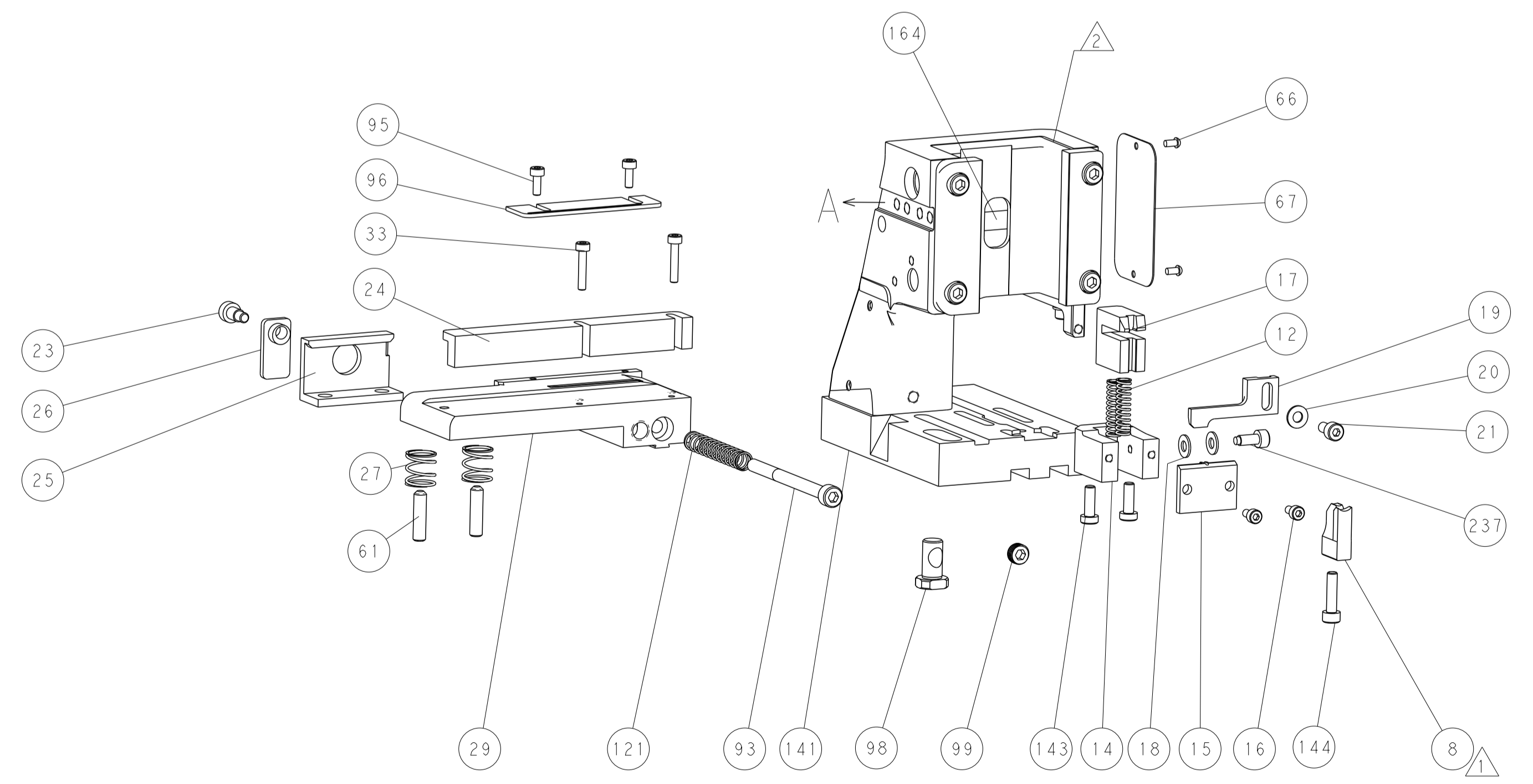
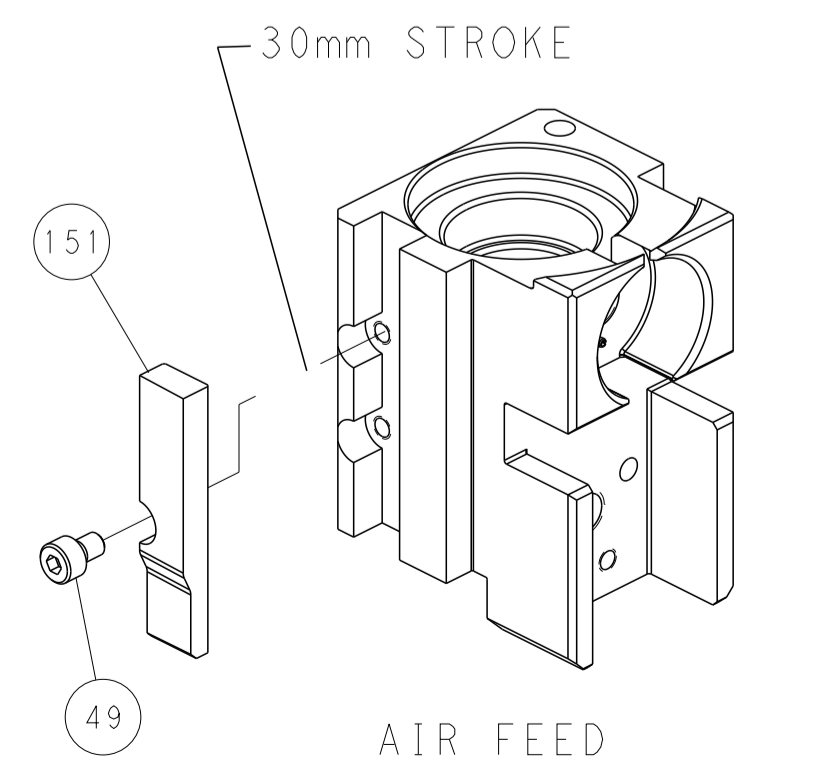
FEED TYPE PNEUMATIC



FEED SPRING SETTING POSITION (SHOWN FROM REAR SIDE)



CAM POSITION



PACIFIC VERSION
 Shown on sheets 3 of 4 & 4 of 4
 (Atlantic version shown on sheets 1 of 4 & 2 of 4)

<small>THIS DRAWING IS UNPUBLISHED. RELEASED FOR PUBLICATION 20. COPYRIGHT 20 BY TYCO ELECTRONICS CORPORATION. ALL RIGHTS RESERVED.</small>		DWN BOB HIGMAN 28DEC2015 CHK T. ELBIN 28DEC2015 APVD T. ELBIN 28DEC2015	NAME Ocean Side Feed Applicator
DIMENSIONS: mm 0 PLC ± 1 PLC ± 2 PLC ± 3 PLC ± 4 PLC ± ANGLES ± FINISH ±	TOLERANCES UNLESS OTHERWISE SPECIFIED: ±	PRODUCT SPEC APPLICATION SPEC WEIGHT SCALE 1:2	SIZE CAGE CODE DRAWING NO A1 00779 C=2836132 RESTRICTED TO Customer Accessible Production Drawing
MATERIAL:		SHEET 4 OF 4 REV D	SHEETS 1 & 2 ARE NOT REQUIRED FOR PACIFIC VERSION