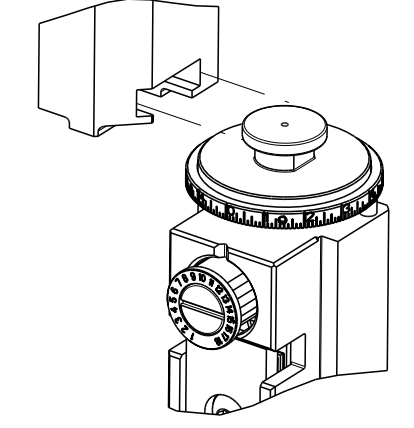


THIS DRAWING IS UNPUBLISHED. RELEASED FOR PUBLICATION 2021
 BY TYCO ELECTRONICS CORPORATION. ALL RIGHTS RESERVED.

PART NUMBER	REVISION	DESCRIPTION	FEED TYPE
2836197-2	A	FINE CRIMP HEIGHT ADJUST	PNEUMATIC
3-2836197-2	A	FINE CRIMP HEIGHT ADJUST	DOUBLE ACTING PNEUMATIC WITH SENSORS
7-2836197-2	A	PNEUMATIC AND CRIMP TOOLING KIT	PNEUMATIC
7-2836197-7	A	CRIMP TOOLING KIT	-

ATLANTIC VERSION TERMINATOR INTERFACE ADAPTER

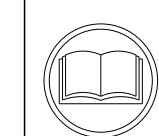


APPLICATOR DATA		
CRIMP	SIZE	TYPE
WIRE	1.40 mm [1.055]	F
INSUL	-	-

APPLICATOR INSTRUCTIONS 408-35042

TERMINAL DATA: TE TERMINAL		TE CRIMP SPECIFICATION	
TERMINAL NAME: TE CENTER CONTACT			
WIRE STRIP LENGTH		INSULATION DIAMETER RANGE	
3.10-3.50 mm [1.22-.138 IN]		∅ -	
TERMINAL APPLICATION SPECIFICATION	114-94045	-	-
TERMINALS APPLIED Δ 3 Δ 8			
TE TERMINAL	TE TERMINAL	TE TERMINAL	TE TERMINAL
2293903-1			

WIRE SIZE	CRIMP HEIGHT mm [INCH]	CRIMP HEIGHT REFERENCE SETTING
0.50mm2	0.86 +/- 0.03 [1.034 +/- .001]	5.5
0.35mm2	0.78 +/- 0.03 [1.031 +/- .001]	6.3



- Δ RECOMMENDED SPARE PARTS
- Δ REFER TO SUPPLIED INSTRUCTION SHEET FOR CLEANING, LUBRICATION AND STORAGE OF APPLICATOR.
- Δ TERMINAL PITCH NOT COMPATIBLE WITH MECHANICAL FEED.
- Δ CRIMP HEIGHT REFERENCE SETTING WAS THE SETTING USED WHEN THE APPLICATOR WAS QUALIFIED AT THE FACTORY. ADJUSTMENT MAY BE NECESSARY WHEN RUNNING APPLICATOR IN THE FIELD.
- 5. UNLESS SPECIFIED OTHERWISE TORQUE VALUES SHALL BE USED PER DOCUMENT, 101-35000.
- Δ THIS APPLICATOR IS EQUIPPED WITH THE DOUBLE ACTING FEED WITH SENSORS AND IS APPLICATION SPECIFIC. IT DOES NOT REQUIRE ITEMS 49 & 248.
- Δ ITEM 262 SHEARS TRAILING TERMINAL.
- Δ TERMINAL LUBRICANT IS RECOMMENDED.

***WARNING**
 ON INSTALLATION, SET WIRE DISC TO CRIMP HEIGHT REFERENCE SETTING FOR LARGEST WIRE SIZE. CRIMP HEIGHT REFERENCE SETTINGS GREATER THAN THE VALUE SHOWN MAY CAUSE DAMAGE TO THE CRIMP TOOLING, REFER TO THE INSTRUCTION SHEET FOR PROPER SETUP AND ADJUSTMENTS.

LOC	DIST	REVISIONS					
A	66	#	LY#	DESCRIPTION	DATE	OWN	APVD
		1		PRELIMINARY	24FEB2016	MEH	TE
		2		PRELIMINARY	11JAN2021	MEH	GB
		3		PRELIMINARY	23FEB2021	MEH	GB
		A		RELEASED	06APR2021	MEH	GB

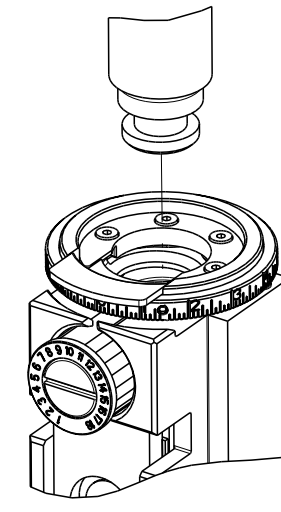
-	-	1	-	2844950-1	AIR FEED MODULE	290
-	-	1	1	2119791-5	DEPRESSOR, WIRE	286
Δ	-	1	1	5-853720-8	BLADE, SLUG	264
Δ	-	1	1	7-18023-1	SCR, SKT HD CAP M2.5 X 12.0	263
Δ	-	1	1	1803942-1	PLATE, REAR SHEAR	262
Δ	-	1	1	455888-5	SPACER, CRIMPER	259
Δ	-	1	-	2119641-1	FEED CAM, AIR FEED	248
Δ	-	1	1	7-18023-7	SCR, SKT HD CAP M3 X 4.0	241
-	-	1	-	2844940-1	AIR FEED MODULE	238
-	REF	REF	REF	994970-2	COUNTER, MAGNETIC	164
Δ	-	1	1	2119955-1	ASSY, LUBRICATOR, SIDE FEED	113
-	-	1	1	2844908-1	SCREW, LOCKING	99
-	-	1	1	2844907-1	POST, LOCKING	98
-	-	1	1	455888-4	SPACER, CRIMPER	82
-	-	1	1	1803607-3	DOCUMENTATION PACKAGE	71
-	-	1	1	2119943-1	WASHER, SPACER	69
-	-	1	1	2119740-1	TAG, IDENTIFICATION	67
-	2	2	2	2168078-1	SCREW, DRIVE, RH, RoHS, 2 x .188	66
-	-	1	1	2168083-5	SCR, SKT HD CAP, RoHS, M4 X 6.0	60
-	-	1	1	5-18022-5	SCR, HEX HD CAP, M4 X 6.0	59
-	-	1	1	1338685-1	PAWL, FEED	56
-	5	5	5	2168083-3	SCR, SKT HD CAP, RoHS, M4 X 12.0	54
-	2	2	2	1-2168083-0	SCR, SKT HD CAP, RoHS, M4 X 10	53
-	-	1	1	1803382-6	HOLD DOWN, SPRING LOADED	50
Δ	-	1	-	18023-9	SCR, SKT HD CAP M4 X 6.0	49
-	-	1	1	3-1803583-5	APPLICATOR BASIC ASSEMBLY, SF	46
-	-	1	1	1803515-1	RAM ASSEMBLY, SF ATLANTIC	44
-	-	1	1	1803602-1	SCR, BHSC, RoHS (M8 X 25)	41
-	-	1	1	1803943-1	SUPPORT, TERMINAL	34
-	2	2	2	2079383-5	SCR, BHSC, RoHS (M4 X 20)	33
-	2	2	2	2-2844962-3	SPACER, CYLINDRICAL, STRIP GUIDE	30
-	-	1	1	2844992-1	ASSEMBLY, STRIP GUIDE	29
-	-	1	1	455888-5	SPACER, CRIMPER	28
-	-	1	1	1320928-2	STRIP GUIDE	24
-	-	1	1	2168083-2	SCR, SKT HD CAP, RoHS, M4 X 8.0	21
-	2	2	2	1-18028-2	WASHER, FLAT, REG M4	20
-	-	1	1	2119533-4	STRIPPER, SIDE FEED	19
Δ	-	1	1	2119806-1	INSERT, SHEAR	13
-	-	1	1	3-22280-3	SPRING, COMPRESSION	12
-	-	1	1	1-356885-4	STOP, SHEAR	11
Δ	-	1	1	2119805-1	SHEAR HOLDER, FRONT	10
Δ	-	1	1	2-1803095-5	FLOATING SHEAR, FRONT	9
Δ	1	2	1	1803941-1	ANVIL, WIRE SPECIAL	8
-	-	1	1	2-240641-8	SPACER	7
-	-	-	-	-	-	6
-	-	1	1	2119757-3	DEPRESSOR, SHEAR	5
-	-	-	-	-	-	4
-	-	-	-	-	-	3
-	-	-	-	-	-	2
Δ	1	2	1	9-1803224-0	CRIMPER, WIRE	1

ATLANTIC VERSION
 Shown on sheets 1 of 4 & 2 of 4
 (Pacific version shown on sheets 3 of 4 & 4 of 4)

DIMENSIONS:		TOLERANCES UNLESS OTHERWISE SPECIFIED:		OWN	CHK	APVD	DATE	NAME	SIZE	CAGE CODE	DRAWING NO	RESTRICTED TO
mm	0 PLC ±	1 PLC ±	2 PLC ±	M. HERR	G. BAILEY	T. ELBIN	24FEB2016	Ocean 2.0 Side Feed Applicator	A1	00779	2836197	-
	3 PLC ±	4 PLC ±	ANGLES FINISH *	Customer Accessible Production Drawing		SCALE 1:2 SHEET 1 of 4 REV A						

PART NUMBER	REVISION	DESCRIPTION	FEED TYPE
2-2836197-2	A	FINE CRIMP HEIGHT ADJUST	PNEUMATIC
4-2836197-2	A	FINE CRIMP HEIGHT ADJUST	DOUBLE ACTING PNEUMATIC WITH SENSORS
7-2836197-7	A	CRIMP TOOLING KIT	-

PACIFIC VERSION TERMINATOR INTERFACE ADAPTER



APPLICATOR DATA		
CRIMP	SIZE	TYPE
WIRE	1.40 mm [.055]	F
INSUL	-	-

APPLICATOR INSTRUCTIONS
408-35042

TERMINAL DATA: TE TERMINAL		TE CRIMP SPECIFICATION	
TERMINAL NAME: TE CENTER CONTACT			
WIRE STRIP LENGTH		INSULATION DIAMETER RANGE	
3.10-3.50 mm [.122-.138 IN]		Ø -	
TERMINAL APPLICATION SPECIFICATION		114-94045	
TERMINALS APPLIED			
TE TERMINAL	TE TERMINAL	TE TERMINAL	TE TERMINAL
2293903-1			

WIRE SIZE	CRIMP HEIGHT mm [INCH]	CRIMP HEIGHT REFERENCE SETTING
0.50mm2	0.86 +/- 0.03 [.034 +/- .001]	5.5
0.35mm2	0.78 +/- 0.03 [.031 +/- .001]	6.3



- 1 RECOMMENDED SPARE PARTS
- 2 REFER TO SUPPLIED INSTRUCTION SHEET FOR CLEANING, LUBRICATION AND STORAGE OF APPLICATOR.
- 3 TERMINAL PITCH NOT COMPATIBLE WITH MECHANICAL FEED.
- 4 CRIMP HEIGHT REFERENCE SETTING WAS THE SETTING USED WHEN THE APPLICATOR WAS QUALIFIED AT THE FACTORY. ADJUSTMENT MAY BE NECESSARY WHEN RUNNING APPLICATOR IN THE FIELD.
- 5. UNLESS SPECIFIED OTHERWISE TORQUE VALUES SHALL BE USED PER DOCUMENT, 101-35000.
- 6 THIS APPLICATOR IS EQUIPPED WITH THE DOUBLE ACTING FEED WITH SENSORS AND IS APPLICATION SPECIFIC. IT DOES NOT REQUIRE ITEMS 49 & 151.
- 7 ITEM 262 SHEARS TRAILING TERMINAL.
- 8 TERMINAL LUBRICANT IS RECOMMENDED.

***WARNING**
ON INSTALLATION, SET WIRE DISC TO CRIMP HEIGHT REFERENCE SETTING FOR LARGEST WIRE SIZE. CRIMP HEIGHT REFERENCE SETTINGS GREATER THAN THE VALUE SHOWN MAY CAUSE DAMAGE TO THE CRIMP TOOLING. REFER TO THE INSTRUCTION SHEET FOR PROPER SETUP AND ADJUSTMENTS.

PACIFIC VERSION
Shown on sheets 3 of 4 & 4 of 4
(Atlantic version shown on sheets 1 of 4 & 2 of 4)

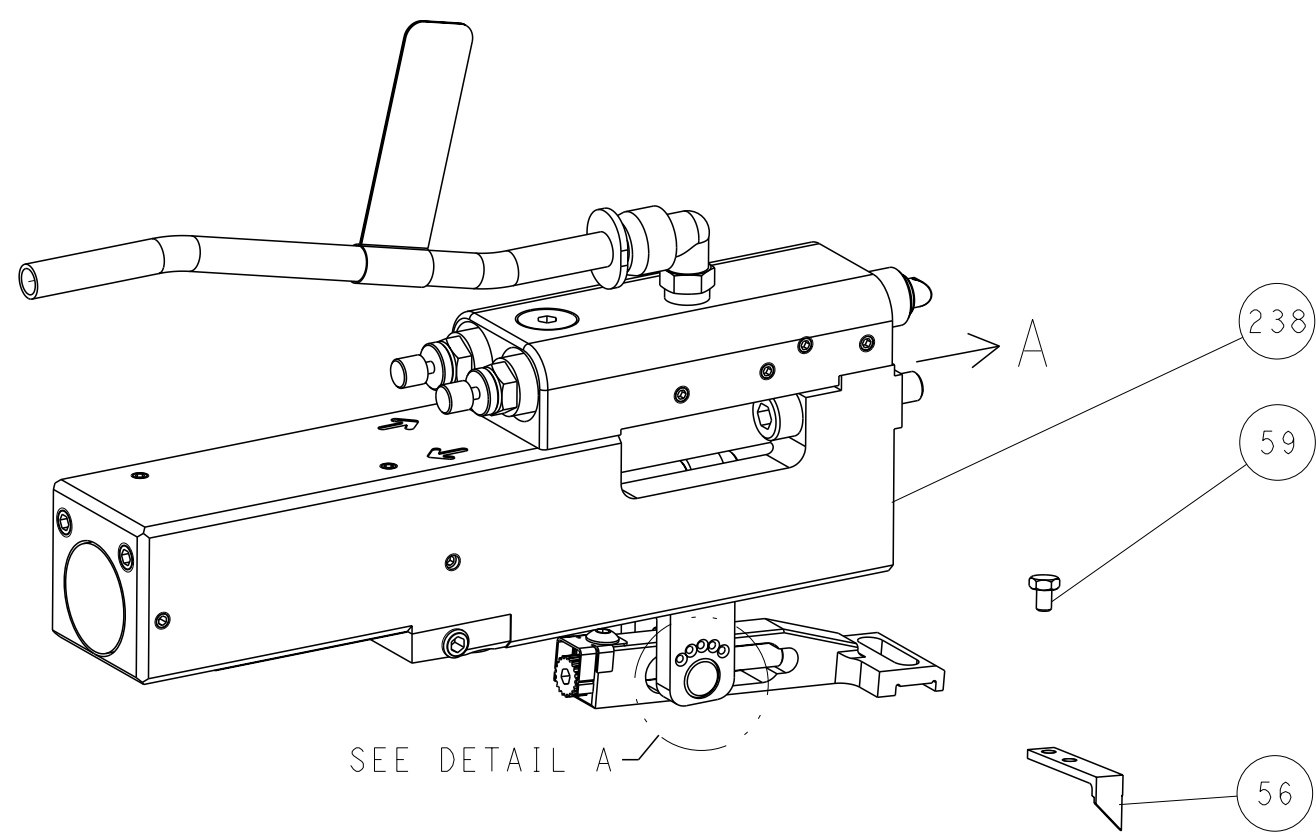
LOC	DIST	REVISIONS			
A	66	REV	DATE	BY	APPD
-	-	1			
-	-	2			
-	-	3			
-	-	4			
-	-	5			
-	-	6			
-	-	7			
-	-	8			
-	-	9			
-	-	10			
-	-	11			
-	-	12			
-	-	13			
-	-	14			
-	-	15			
-	-	16			
-	-	17			
-	-	18			
-	-	19			
-	-	20			
-	-	21			
-	-	22			
-	-	23			
-	-	24			
-	-	25			
-	-	26			
-	-	27			
-	-	28			
-	-	29			
-	-	30			
-	-	31			
-	-	32			
-	-	33			
-	-	34			
-	-	35			
-	-	36			
-	-	37			
-	-	38			
-	-	39			
-	-	40			
-	-	41			
-	-	42			
-	-	43			
-	-	44			
-	-	45			
-	-	46			
-	-	47			
-	-	48			
-	-	49			
-	-	50			
-	-	51			
-	-	52			
-	-	53			
-	-	54			
-	-	55			
-	-	56			
-	-	57			
-	-	58			
-	-	59			
-	-	60			
-	-	61			
-	-	62			
-	-	63			
-	-	64			
-	-	65			
-	-	66			
-	-	67			
-	-	68			
-	-	69			
-	-	70			
-	-	71			
-	-	72			
-	-	73			
-	-	74			
-	-	75			
-	-	76			
-	-	77			
-	-	78			
-	-	79			
-	-	80			
-	-	81			
-	-	82			
-	-	83			
-	-	84			
-	-	85			
-	-	86			
-	-	87			
-	-	88			
-	-	89			
-	-	90			
-	-	91			
-	-	92			
-	-	93			
-	-	94			
-	-	95			
-	-	96			
-	-	97			
-	-	98			
-	-	99			
-	-	100			

-	1	-	2844950-1	AIR FEED MODULE	290
-	1	1	2119791-5	DEPRESSOR, WIRE	286
-	1	1	5-853720-8	BLADE, SLUG	264
-	1	1	7-18023-1	SCR, SKT HD CAP M2.5 X 12.0	263
-	1	1	1803942-1	PLATE, REAR SHEAR	262
-	1	1	455888-5	SPACER, CRIMPER	259
-	1	1	7-18023-7	SCR, SKT HD CAP M3 X 4.0	241
-	-	1	2844940-1	AIR FEED MODULE	238
-	REF	REF	994970-2	COUNTER, MAGNETIC	164
-	-	1	2119641-2	FEED CAM, AIR FEED	151
-	1	1	2168083-8	SCR, SKT HD CAP, RoHS, M4 X 16	144
-	5	5	2168083-9	SCR, SKT HD CAP, RoHS, M4 X 20	143
-	1	1	3-1803583-6	APPLICATOR BASIC ASSEMBLY, SF	141
-	1	1	1803516-1	RAM ASSEMBLY, SF PACIFIC	140
-	1	1	2119955-1	ASSY, LUBRICATOR, SIDE FEED	113
-	1	1	2844908-1	SCREW, LOCKING	99
-	1	1	2844907-1	POST, LOCKING	98
-	1	1	455888-4	SPACER, CRIMPER	82
-	1	1	1803607-3	DOCUMENTATION PACKAGE	71
-	1	1	2119943-1	WASHER, SPACER	69
-	1	1	2119740-1	TAG, IDENTIFICATION	67
-	2	2	2168078-1	SCREW, DRIVE, RH, RoHS, 2 x .188	66
-	1	1	5-18022-5	SCR, HEX HD CAP, M4 X 6.0	59
-	1	1	1338685-1	PAWL, FEED	56
-	2	2	1-2168083-0	SCR, SKT HD CAP, RoHS, M4 X 10	53
-	1	1	1803382-6	HOLD DOWN, SPRING LOADED	50
-	-	1	18023-9	SCR, SKT HD CAP M4 X 6.0	49
-	1	1	1803602-1	SCR, BHSC, RoHS (M8 X 25)	41
-	1	1	1803943-1	SUPPORT, TERMINAL	34
-	2	2	2079383-5	SCR, BHSC, RoHS (M4 X 20)	33
-	2	2	2-2844962-3	SPACER, CYLINDRICAL, STRIP GUIDE	30
-	1	1	2844992-1	ASSEMBLY, STRIP GUIDE	29
-	1	1	455888-5	SPACER, CRIMPER	28
-	1	1	1320928-2	STRIP GUIDE	24
-	1	1	2168083-2	SCR, SKT HD CAP, RoHS, M4 X 8.0	21
-	2	2	1-18028-2	WASHER, FLAT, REG M4	20
-	1	1	2119533-4	STRIPPER, SIDE FEED	19
-	1	1	2119806-1	INSERT, SHEAR	13
-	1	1	3-22280-3	SPRING, COMPRESSION	12
-	1	1	1-356885-4	STOP, SHEAR	11
-	1	1	2119805-1	SHEAR HOLDER, FRONT	10
-	1	1	2-1803095-5	FLOATING SHEAR, FRONT	9
-	1	1	1803941-1	ANVIL, WIRE SPECIAL	8
-	1	1	2-240641-8	SPACER	7
-	-	-	-	-	6
-	1	1	2119757-3	DEPRESSOR, SHEAR	5
-	-	-	-	-	4
-	-	-	-	-	3
-	-	-	-	-	2
-	-	-	-	-	1
-	1	1	9-1803224-0	CRIMPER, WIRE	1

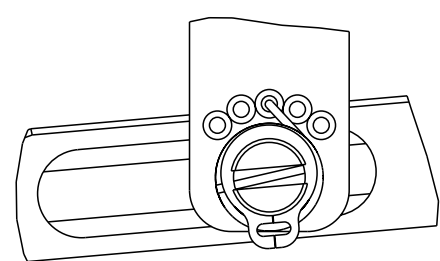
DIMENSIONS:		TOLERANCES UNLESS OTHERWISE SPECIFIED:		APPROVED:		DATE:		DESCRIPTION:		ITEM NO:	
mm	0 PLC ±	1 PLC ±	2 PLC ±	3 PLC ±	4 PLC ±	FINISH	★	OWN	M. HERR	24FEB2016	24FEB2016
								CHK	G. BAILEY	24FEB2016	24FEB2016
								APVD	T. ELBIN	24FEB2016	24FEB2016
MATERIAL		FINISH		WEIGHT		SCALE		CUSTOMER ACCESSIBLE PRODUCTION DRAWING		RESTRICTED TO	
						A 00779 C=2836197		SCALE 1:2 SHEET 3 OF 4 REV A			

LOC	DIST	REVISIONS			
A	66	REV	DATE	OWN	APVD
-	-	SEE SHEET 1	-	-	-

FEED TYPE PNEUMATIC

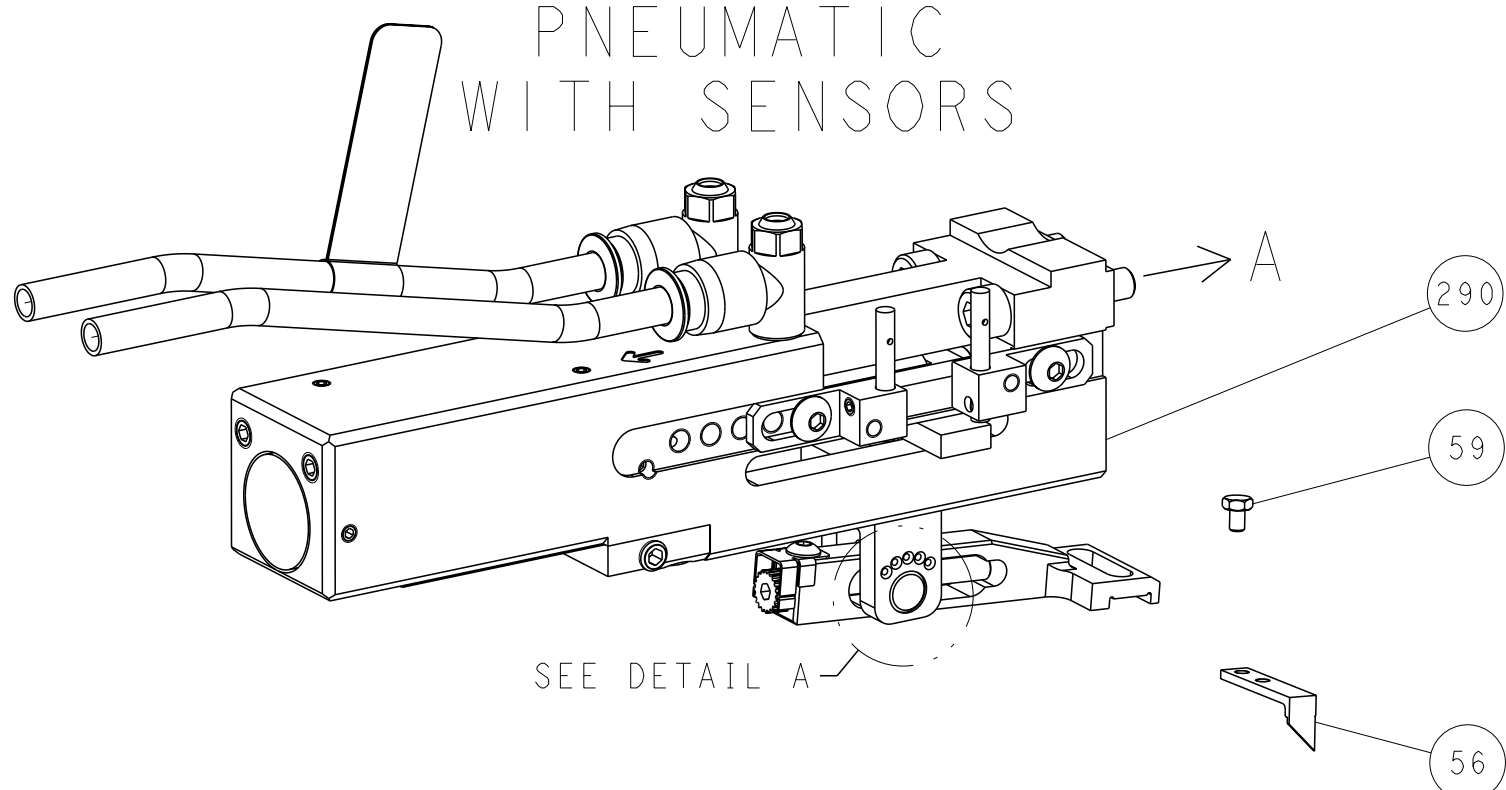


FEED SPRING SETTING POSITION (SHOWN FROM REAR SIDE)

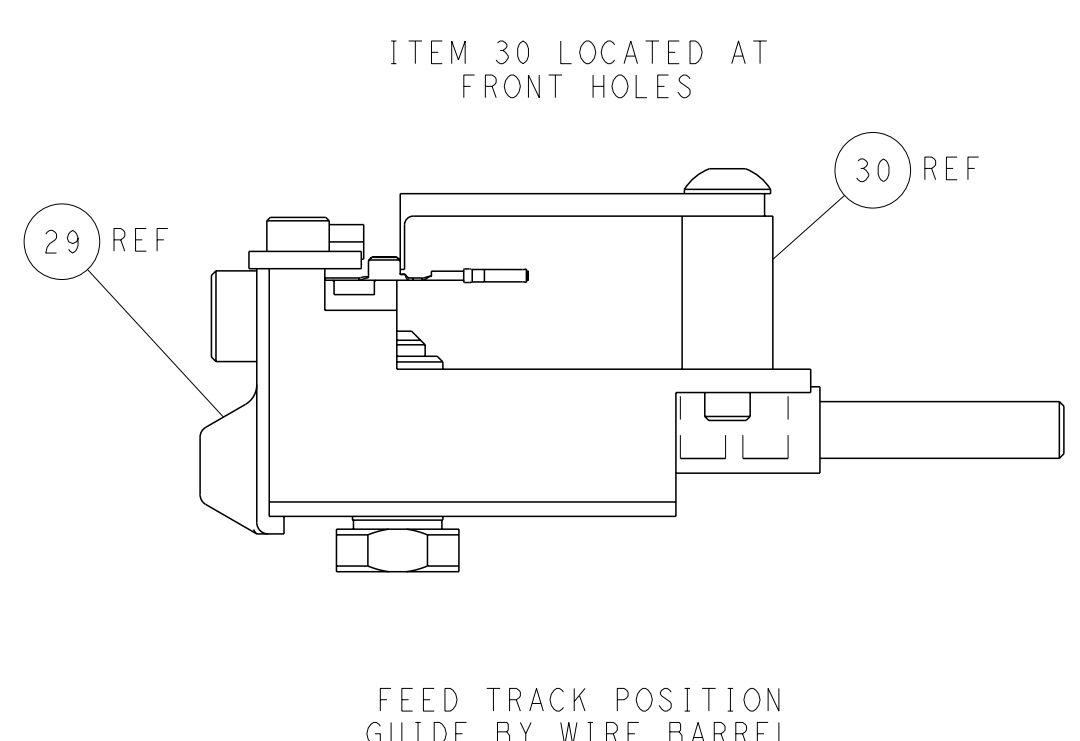
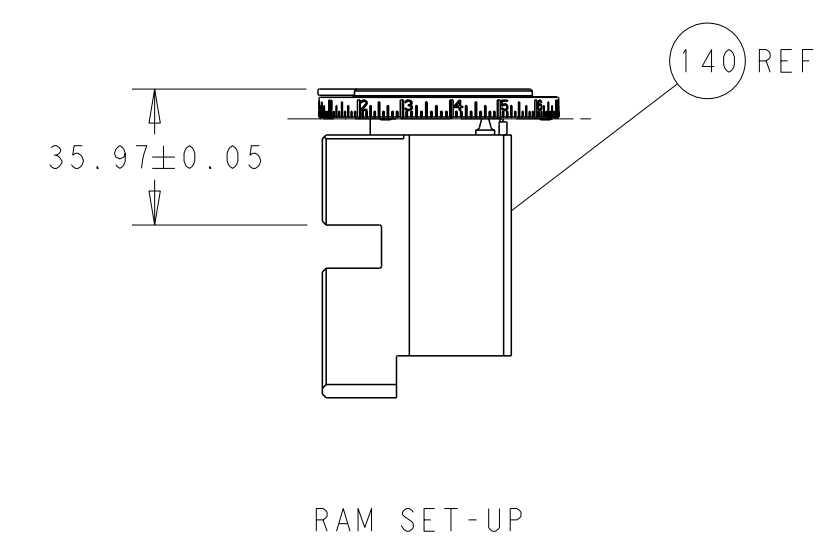
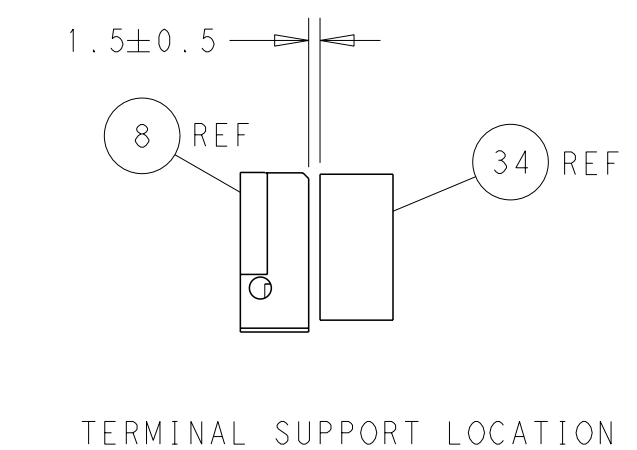
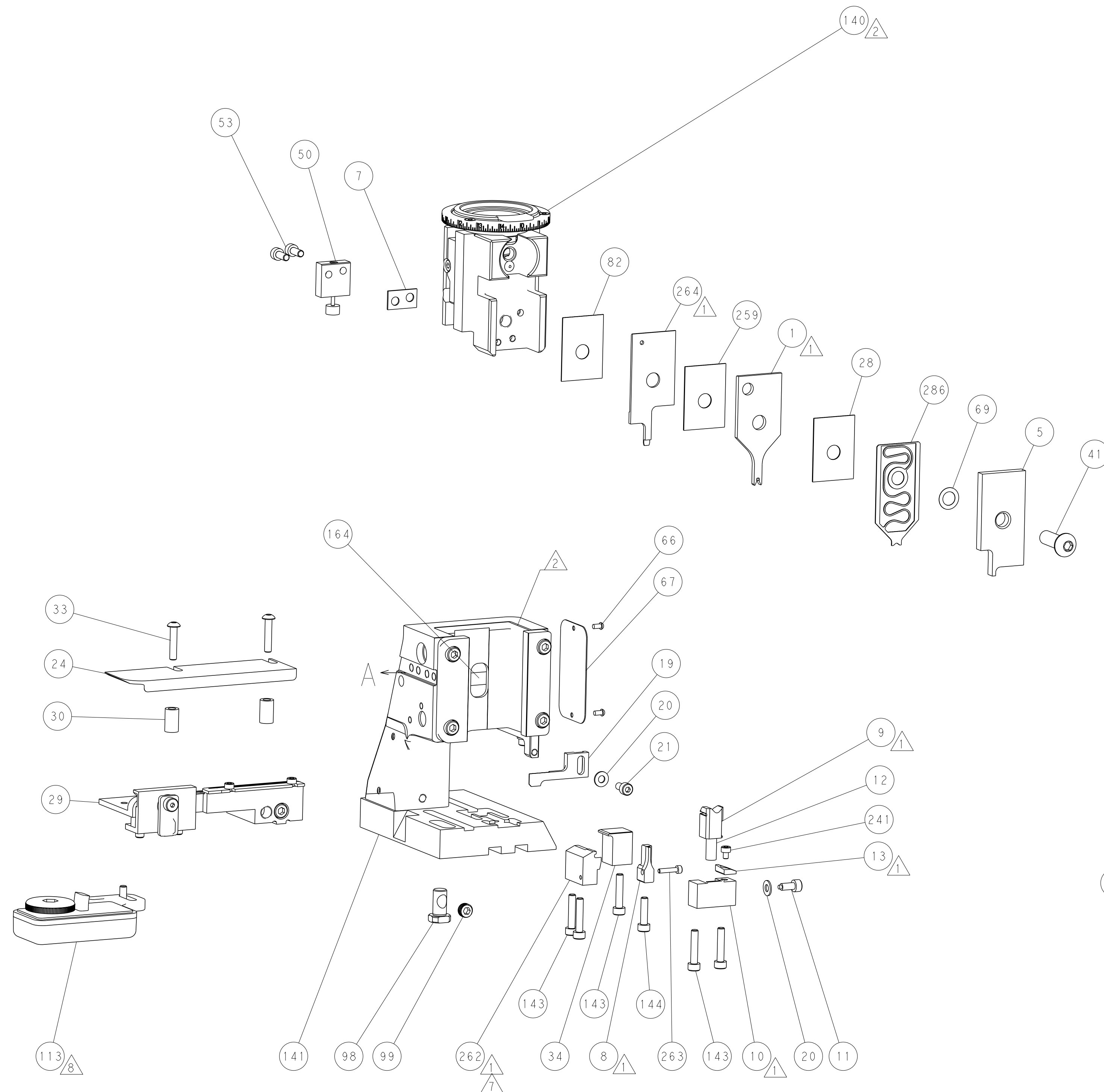
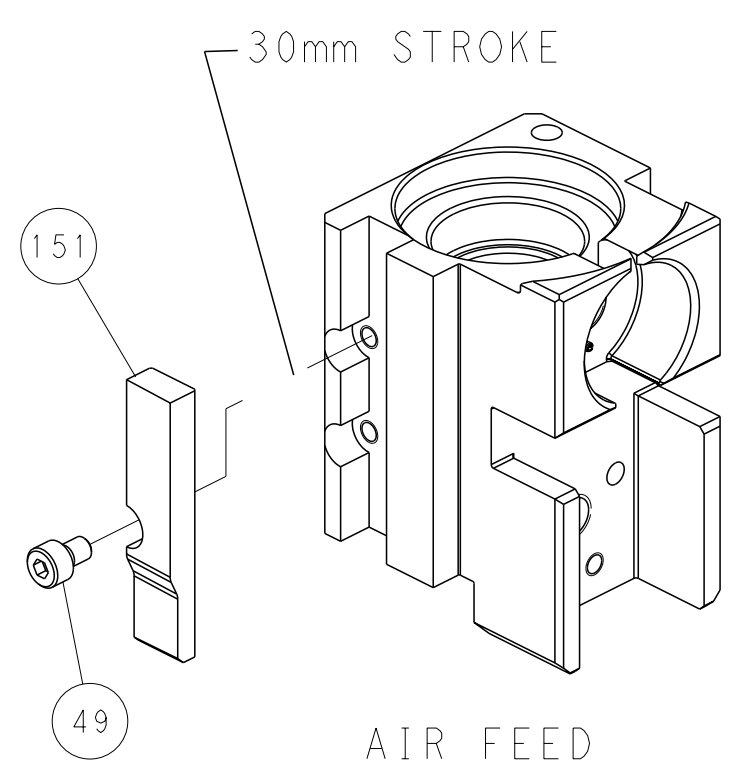


DETAIL A

DOUBLE ACTING PNEUMATIC WITH SENSORS



CAM POSITION



PACIFIC VERSION
 Shown on sheets 3 of 4 & 4 of 4
 (Atlantic version shown on sheets 1 of 4 & 2 of 4)

<small>THIS DRAWING IS UNPUBLISHED. RELEASED FOR PUBLICATION 2021. COPYRIGHT 2021 BY TYCO ELECTRONICS CORPORATION. ALL RIGHTS RESERVED.</small>		OWN: M. HERR CHK: G. BAILEY APVD: T. ELBIN	DATE: 24FEB2016 PRODUCT SPEC: 24FEB2016	NAME: Ocean 2.0 Side Feed Applicator	SIZE: A1 CAGE CODE: 00779 DRAWING NO: C=2836197	RESTRICTED TO: -
DIMENSIONS: mm TOLERANCES UNLESS OTHERWISE SPECIFIED: 0 PLC ± 1 PLC ± 2 PLC ± 3 PLC ± 4 PLC ± ANGLES FINISH ±	WEIGHT: - SCALE: 1:2	SHEET: 4 OF: 4	REV: A	Customer Accessible Production Drawing		