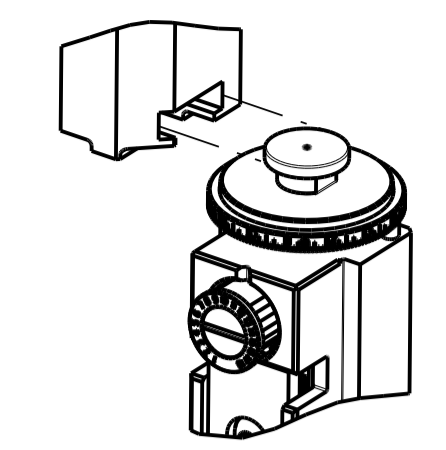


PART NUMBER	REVISION	DESCRIPTION	FEED TYPE
2836230-1	C	FINE CRIMP HEIGHT ADJUST	MECHANICAL
2836230-2	C	FINE CRIMP HEIGHT ADJUST	PNEUMATIC
7-2836230-1	C	MECHANICAL AND CRIMP TOOLING KIT	MECHANICAL
7-2836230-2	C	PNEUMATIC AND CRIMP TOOLING KIT	PNEUMATIC
7-2836230-7	A	CRIMP TOOLING KIT	-

ATLANTIC VERSION TERMINATOR INTERFACE ADAPTER



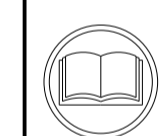
APPLICATOR DATA		
CRIMP	SIZE	TYPE
WIRE	2.20 mm [.087]	F
INSUL	3.90 mm [.154]	O

APPLICATOR INSTRUCTIONS
408-35042

TERMINAL DATA: Sumitomo TERMINAL VW CRIMP SPECIFICATION	
TERMINAL NAME: TERMINAL, RECEPTABLE	
WIRE STRIP LENGTH 4.20-4.80 mm [.165-.189 IN]	INSULATION DIAMETER RANGE Ø
TERMINAL APPLICATION SPECIFICATION N.105.440 Rev -	

TE TERMINAL	Sumitomo TERMINAL	TE SEAL	Sumitomo SEAL	CABLE DIAMETER
1949792-1	8100-2027	1949787-2	06A972741C	Ø1.9-2.1mm

WIRE SIZE	CRIMP HEIGHT mm [INCH]	CRIMP HEIGHT REFERENCE SETTING
1.00mm2	1.21+/-0.05 [.048+/- .002]	6.7



- 1. RECOMMENDED SPARE PARTS
- 2. REFER TO SUPPLIED INSTRUCTION SHEET FOR CLEANING, LUBRICATION AND STORAGE OF APPLICATOR.
- 3. APPLY PART NUMBER 2-23419-6 LOCTITE TO THREADS OF ITEM 242.
- 4. CRIMP HEIGHT REFERENCE SETTING WAS THE SETTING USED WHEN THE APPLICATOR WAS QUALIFIED AT THE FACTORY. ADJUSTMENT MAY BE NECESSARY WHEN RUNNING APPLICATOR IN THE FIELD.
- 5. APPLY TORQ-SEAL IN ALLEN SOCKET TO FILL HOLE AFTER FLAT HD HAS BEEN ADJUSTED TO CORRECT HEIGHT AT QUALIFICATION. APPLY #1-23419-5 LOC-TITE TO THREADS.
- 6. UNLESS SPECIFIED OTHERWISE TORQUE VALUES SHALL BE USED PER DOCUMENT, 101-35000.

***WARNING**
ON INSTALLATION, SET WIRE DISC TO CRIMP HEIGHT REFERENCE SETTING FOR LARGEST WIRE SIZE. CRIMP HEIGHT REFERENCE SETTINGS GREATER THAN THE VALUE SHOWN MAY CAUSE DAMAGE TO THE CRIMP TOOLING. REFER TO THE INSTRUCTION SHEET FOR PROPER SETUP AND ADJUSTMENTS.

LOC	DIST	REVISIONS			
A	66	REV	DATE	BY	APPV
		A	RELEASED	21MAR2016	MR TE
		B	ECR-20-016459	18NOV2020	TB RK
		C	ECR-21-000194	08JAN2021	FZ RK
		C1	ECR-21-000640	19JAN2021	FJ YY

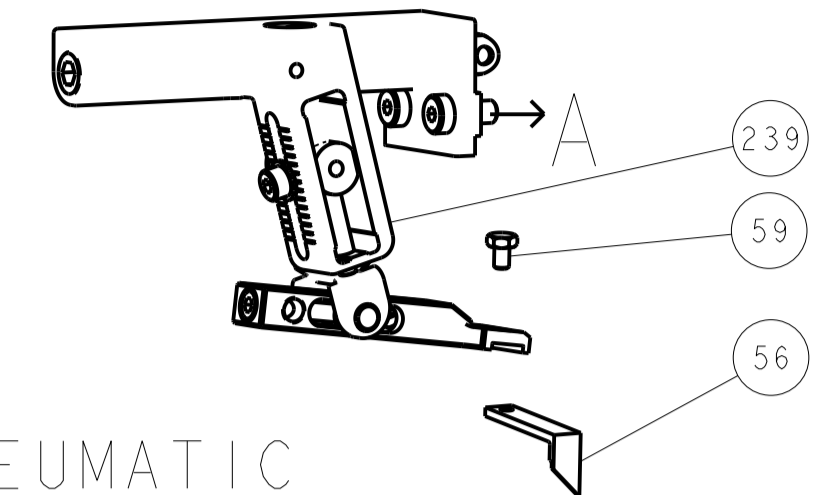
-	1	-	1	-	2119641-1	FEED CAM, AIR FEED	248	
-	1	1	1	1	2119082-2	CAM, SNAIL, INSULATION ADJUSTMENT	244	
-	1	1	1	1	2079764-1	WASHER, WAVE SPRING, CREST-TO-CREST	243	
-	1	1	1	1	2119083-1	RETAINER, INSULATION DIAL	242	
-	1	1	1	1	7-18023-7	SCR, SKT HD CAP M3 X 4.0	241	
-	-	1	-	1	2119580-1	MECHANICAL FEED ASSEMBLY	239	
-	1	-	1	-	2844940-1	AIR FEED MODULE	238	
-	REF	REF	REF	REF	994970-2	COUNTER, MAGNETIC	164	
-	1	1	1	1	2844908-1	SCREW, LOCKING	99	
-	1	1	1	1	2844907-1	POST, LOCKING	98	
-	1	1	1	1	455888-7	SPACER, CRIMPER	82	
-	1	1	1	1	1803607-3	DOCUMENTATION PACKAGE	71	
-	1	1	1	1	2119740-1	TAG, IDENTIFICATION	67	
-	2	2	2	2	2168078-1	SCREW, DRIVE, RH, RoHS, 2 x .188	66	
-	1	1	1	1	2168083-2	SCR, SKT HD CAP, RoHS, M4 X 8.0	60	
-	1	1	1	1	5-18022-5	SCR, HEX HD CAP, M4 X 6.0	59	
-	1	1	1	1	985575-3	SCR, FLT SKT HD CAP M3 X 10.0	57	
-	1	1	1	1	1338683-8	FEED PAWL	56	
-	4	4	4	4	2168083-3	SCR, SKT HD CAP, RoHS, M4 X 12.0	54	
-	2	2	2	2	1-2168083-0	SCR, SKT HD CAP, RoHS, M4 X 10	53	
-	1	1	1	1	5018030-1	NUT, HEX, REG, RoHS, M3	52	
-	1	1	1	1	811242-5	BUMPER, HOLD DOWN	51	
-	1	1	1	1	690753-2	SPACER, TONKER	50	
-	1	2	1	2	18023-9	SCR, SKT HD CAP M4 X 6.0	49	
-	-	1	-	1	2119652-1	FEED CAM, PRE FEED	48	
-	-	1	-	1	2119653-1	FEED CAM, POST FEED	47	
-	1	1	1	1	1803583-9	APPLICATOR BASIC ASSEMBLY, SF	46	
-	1	1	1	1	1803515-1	RAM ASSEMBLY, SF ATLANTIC	44	
-	1	1	1	1	1803602-1	SCR, BHSC, RoHS (M8 X 25)	41	
-	1	1	1	1	1752356-3	SUPPORT, TERMINAL	34	
-	2	2	2	2	2079383-5	SCR, BHSC, RoHS (M4 X 20)	33	
-	2	2	2	2	2-2844962-8	SPACER, CYLINDRICAL, STRIP GUIDE	30	
-	1	1	1	1	2844992-1	ASSEMBLY, STRIP GUIDE	29	
-	1	1	1	1	455888-3	SPACER, CRIMPER	28	
-	1	1	1	1	1320928-2	STRIP GUIDE	24	
-	1	1	1	1	2168083-2	SCR, SKT HD CAP, RoHS, M4 X 8.0	21	
-	2	2	2	2	1-18028-2	WASHER, FLAT, REG M4	20	
-	1	1	1	1	2119533-1	STRIPPER, SIDE FEED	19	
-	1	1	1	1	2119806-1	INSERT, SHEAR	13	
-	1	1	1	1	3-22280-3	SPRING, COMPRESSION	12	
-	1	1	1	1	1-356885-4	STOP, SHEAR	11	
-	1	1	1	1	2119805-1	SHEAR HOLDER, FRONT	10	
-	1	1	1	1	318707-1	FLOATING SHEAR, FRONT	9	
-	1	2	2	1	1	8-1803056-0	ANVIL, COMBINATION	8
-	-	-	-	-	-	-	7	
-	-	-	-	-	-	-	6	
-	1	1	1	1	2119781-1	DEPRESSOR, SHEAR	5	
-	1	1	1	1	238011-4	BLOCK, CRIMPER SPACER	4	
-	1	2	2	1	1	3-1803018-8	CRIMPER, INSULATION O	3
-	1	1	1	1	1-455888-4	SPACER, CRIMPER	2	
-	1	2	2	1	1	3-1803241-7	CRIMPER, WIRE F	1
-	77	-72	-71	-2	-1	PART NO	DESCRIPTION	ITEM NO

ATLANTIC VERSION
Shown on sheets 1 of 4 & 2 of 4
(Pacific version shown on sheets 3 of 4 & 4 of 4)

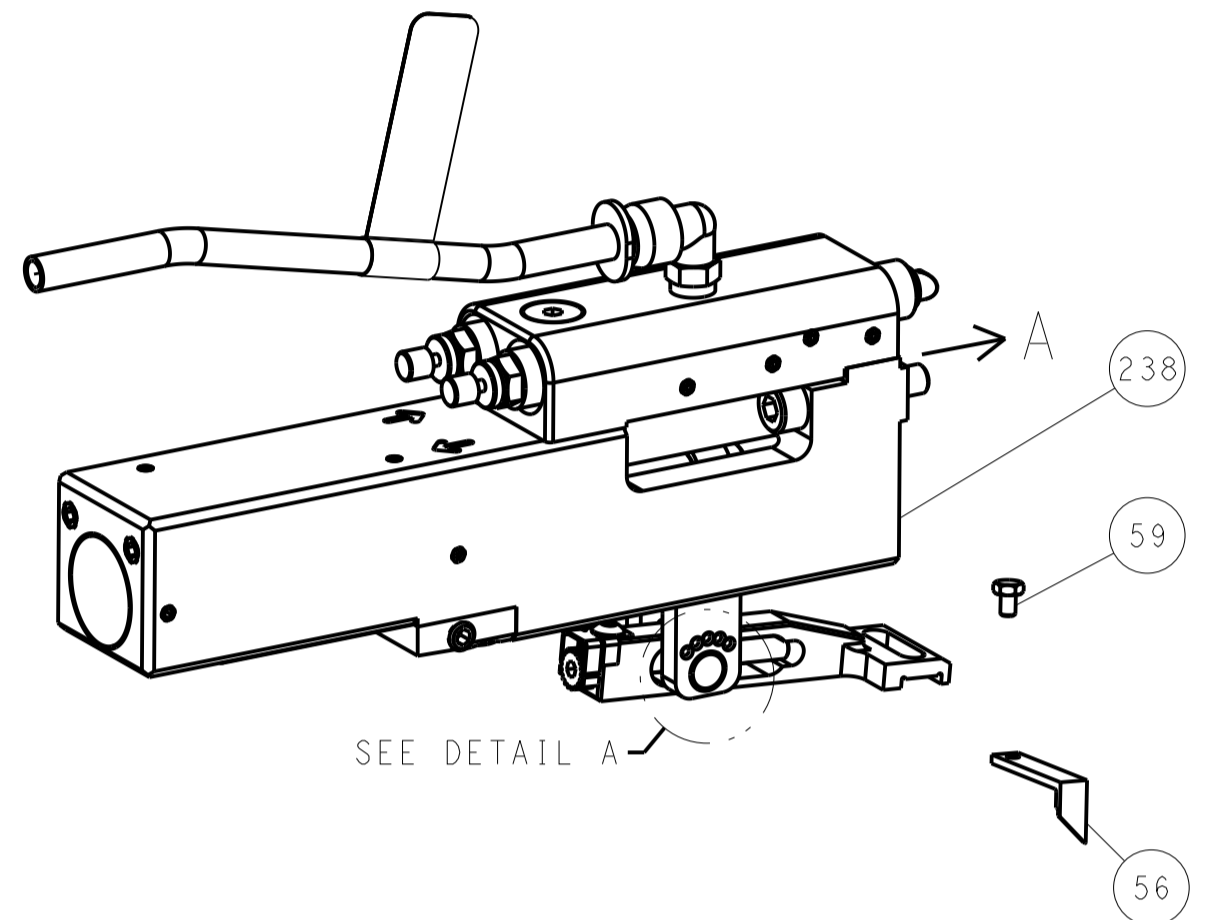
DIMENSIONS: mm		TOLERANCES UNLESS OTHERWISE SPECIFIED:		OWN J. HOU 25FEB2016	TE Connectivity
0 PLC	±	0.15	±	CHK L. ZHANG 25FEB2016	Harrisburg, PA 17105-3608
1 PLC	±	0.25	±	APPV H. GUO 25FEB2016	
2 PLC	±	0.38	±		
3 PLC	±	0.51	±		
4 PLC	±	0.64	±		
ANGLES	±		±		
MATERIAL		FINISH		PRODUCT SPEC	NAME Ocean Side Feed Applicator
				APPLICATION SPEC	SIZE CAGE CODE DRAWING NO
				WEIGHT	A1 00779 C=2836230
				RESTRICTED TO	Customer Accessible Production Drawing
				SCALE	1:2 SHEET 1 OF 4 REV C1

LOC	DIST	REV	DATE	BY	APP'D
A	66				

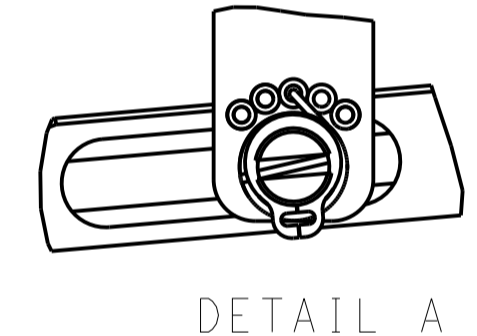
FEED TYPE MECHANICAL



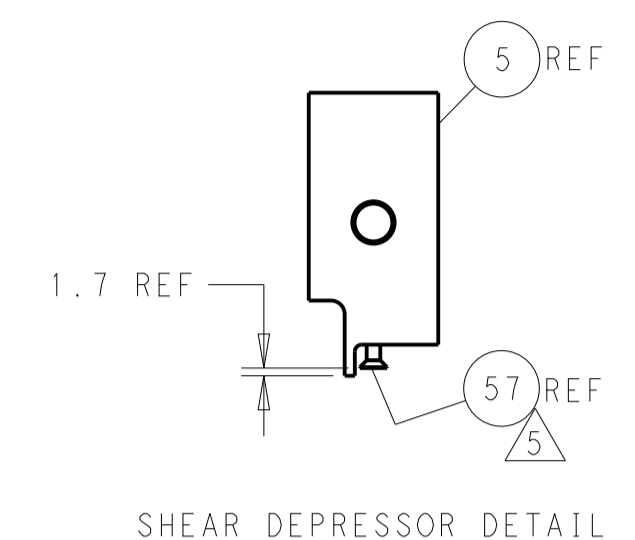
PNEUMATIC



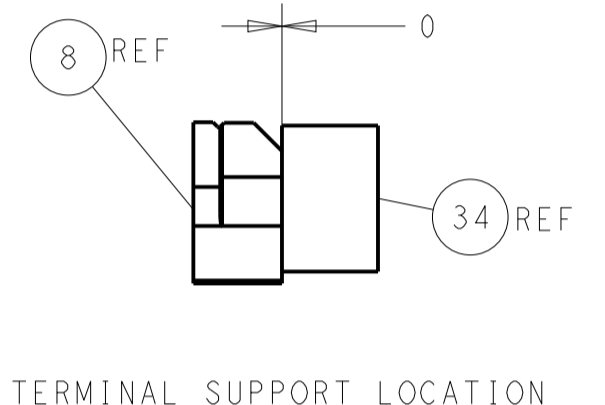
FEED SPRING SETTING POSITION (SHOWN FROM REAR SIDE)



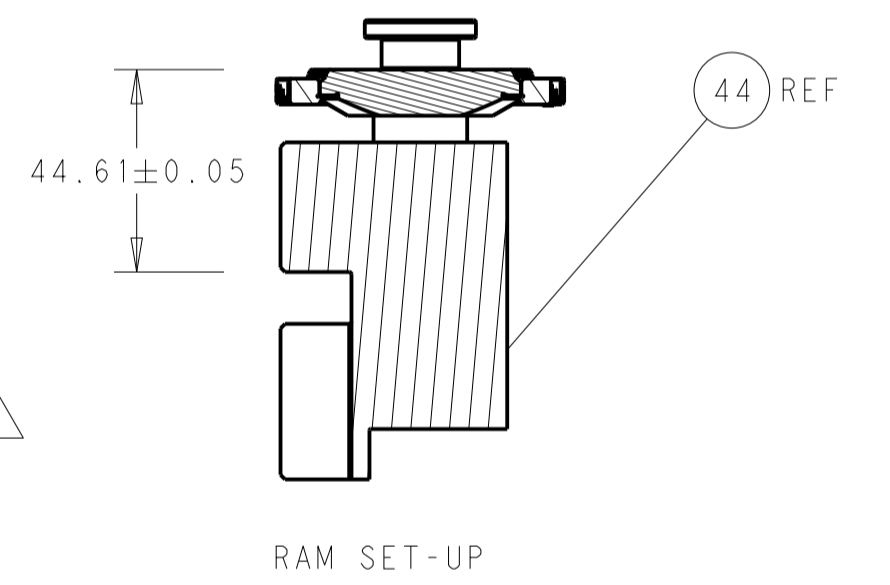
DETAIL A



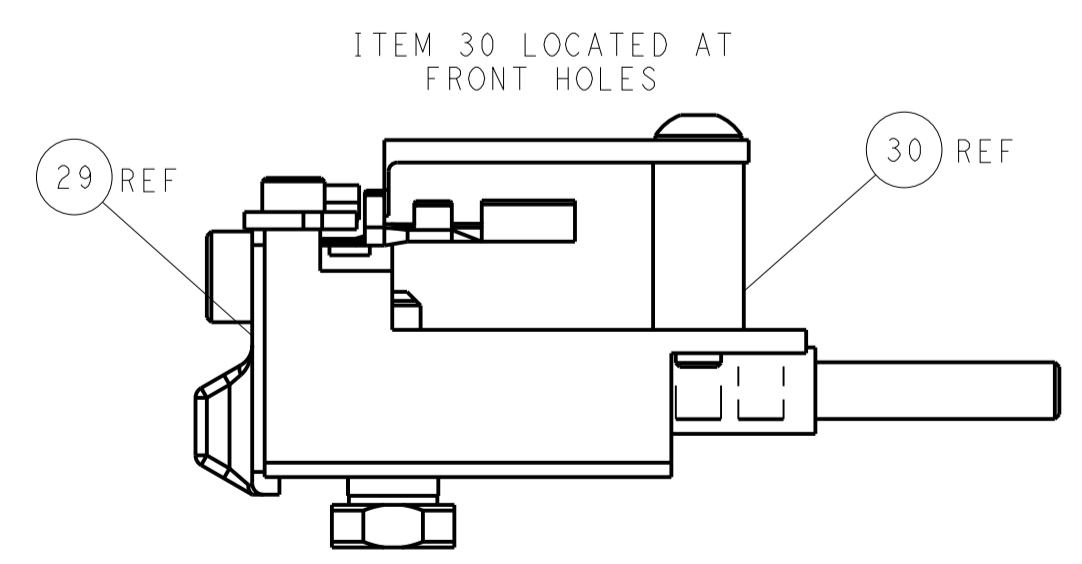
SHEAR DEPRESSOR DETAIL



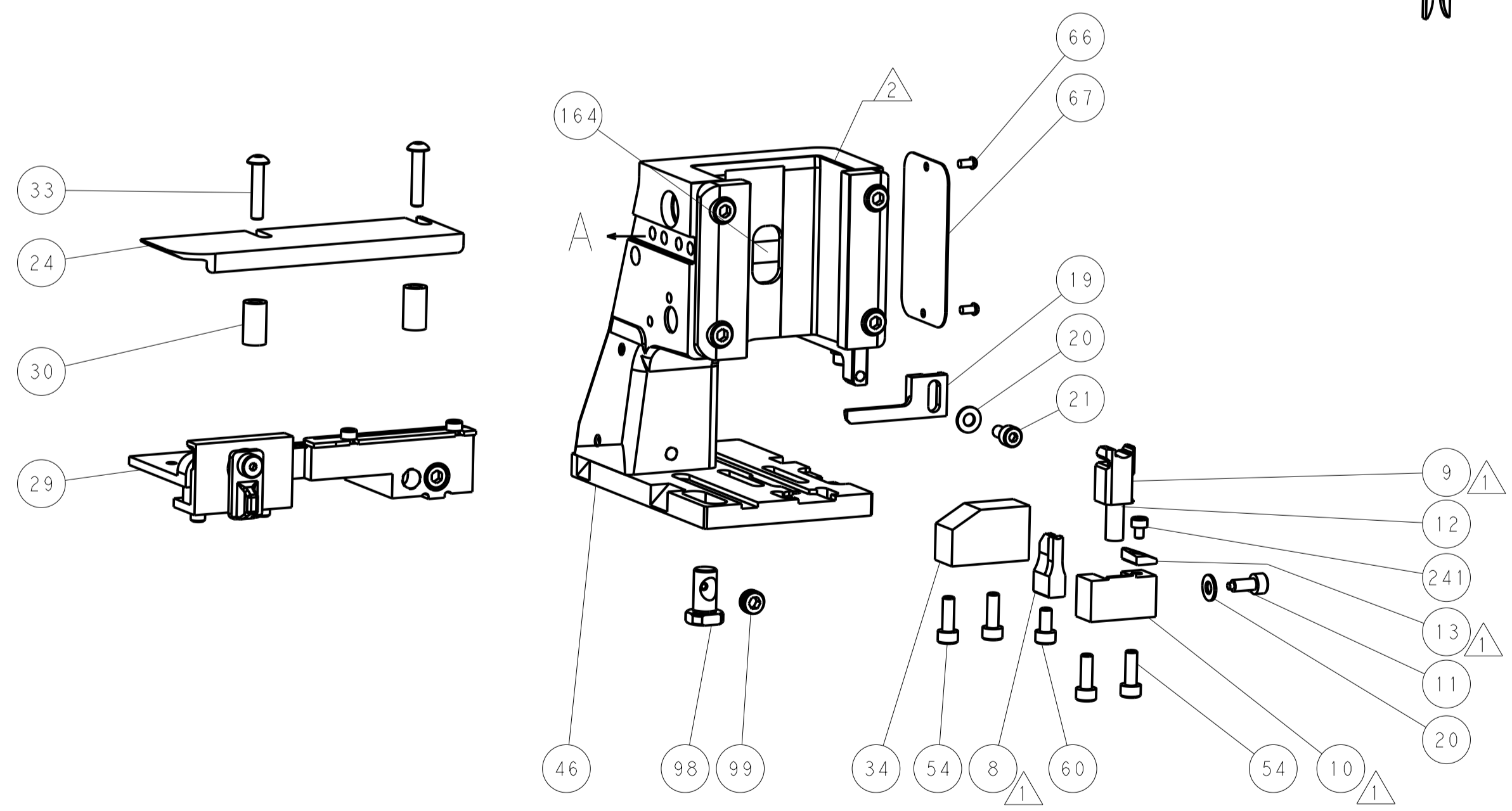
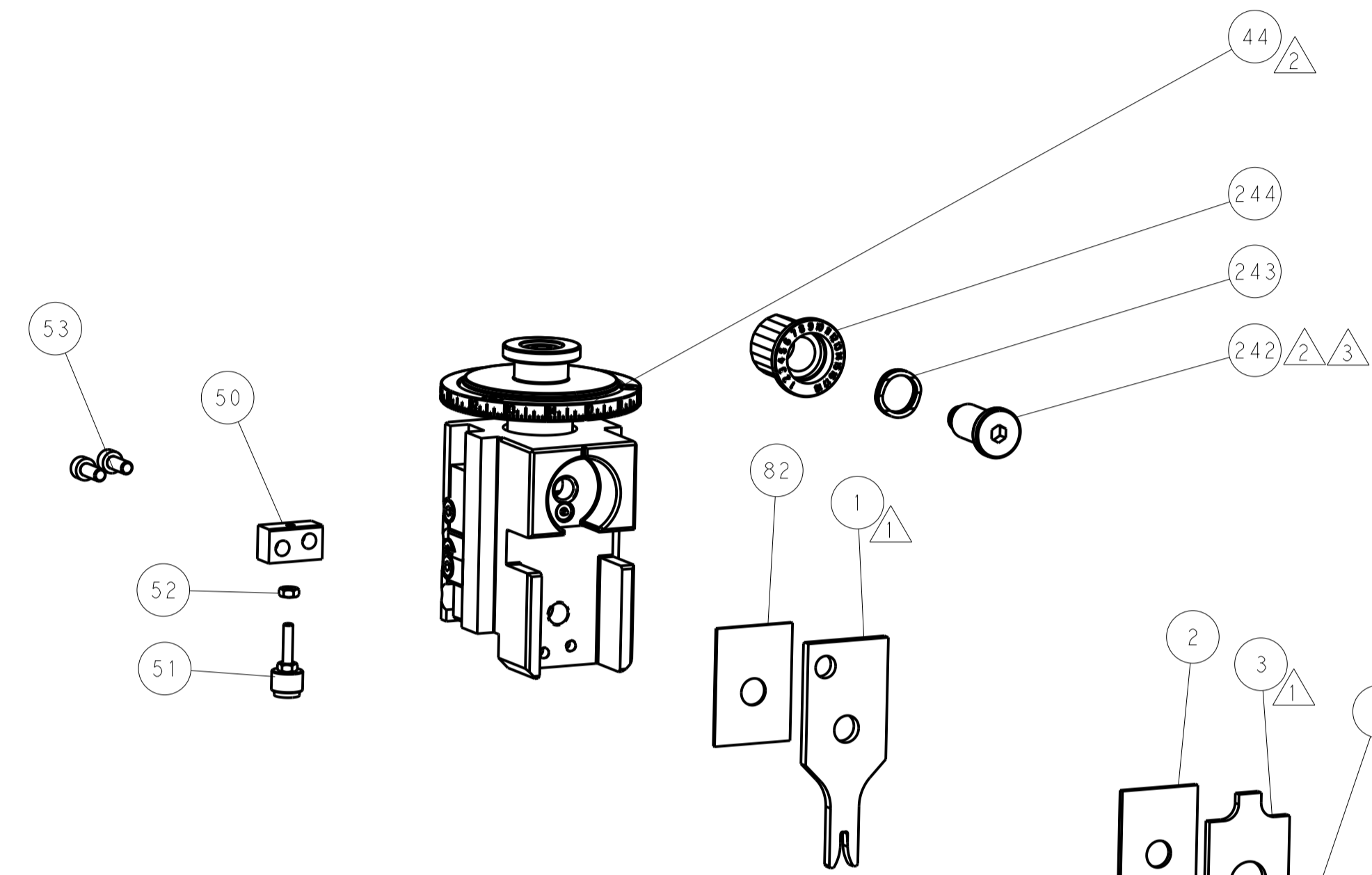
TERMINAL SUPPORT LOCATION



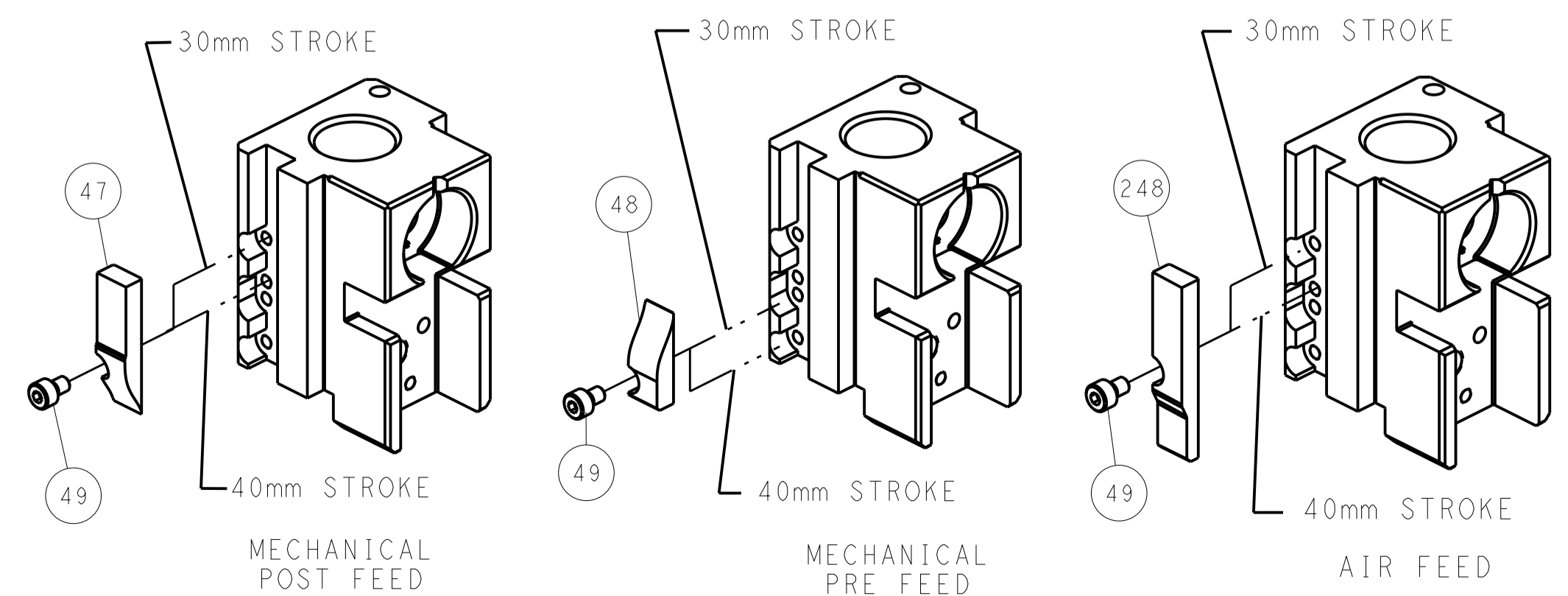
RAM SET-UP



FEED TRACK POSITION GUIDE BY INSULATION BARREL



CAM POSITIONS



ATLANTIC VERSION
 Shown on sheets 1 of 4 & 2 of 4
 (Pacific version shown on sheets 3 of 4 & 4 of 4)

DIMENSIONS: mm 		TOLERANCES UNLESS OTHERWISE SPECIFIED: 0 PLC ± 1 PLC ± 2 PLC ± 3 PLC ± 4 PLC ± ANGLES ±		DWN: J. HOU 25FEB2016 CHK: L. ZHANG 25FEB2016 APVD: H. GUO 25FEB2016		NAME: Ocean Side Feed Applicator SIZE: A1 CAGE CODE: 00779 DRAWING NO: 2836230		RESTRICTED TO: - SCALE: 1:2 SHEET: 2 of 4 REV: C1	
MATERIAL: - FINISH: -				WEIGHT: -		CUSTOMER ACCESSIBLE PRODUCTION DRAWING		SHEETS 3 & 4 ARE NOT REQUIRED FOR ATLANTIC VERSION	

PART NUMBER	REVISION	DESCRIPTION	FEED TYPE
2-2836230-1	C	FINE CRIMP HEIGHT ADJUST	MECHANICAL
2-2836230-2	C	FINE CRIMP HEIGHT ADJUST	PNEUMATIC
7-2836230-7	A	CRIMP TOOLING KIT	-

PACIFIC VERSION TERMINATOR
INTERFACE ADAPTER



APPLICATOR DATA		
CRIMP	SIZE	TYPE
WIRE	2.20 mm [.087]	F
INSUL	3.90 mm [.154]	O

APPLICATOR INSTRUCTIONS
408-35042

TERMINAL DATA: Sumitomo TERMINAL VW CRIMP SPECIFICATION				
TERMINAL NAME: TERMINAL, RECEPTABLE				
WIRE STRIP LENGTH 4.20-4.80 mm [1.65-.189 IN]	INSULATION DIAMETER RANGE Ø			
TERMINAL APPLICATION SPECIFICATION N.105.440 Rev -				
TERMINALS APPLIED				
TE TERMINAL	Sumitomo TERMINAL	TE SEAL	Sumitomo SEAL	CABLE DIAMETER
1949792-1	8100-2027	1949787-2	06A972741C	Ø1.9-2.1mm

WIRE SIZE	CRIMP HEIGHT mm [INCH]	CRIMP HEIGHT REFERENCE SETTING
1.00mm2	1.21+/-0.05 [1.048+/-0.02]	6.7

- RECOMMENDED SPARE PARTS
- REFER TO SUPPLIED INSTRUCTION SHEET FOR CLEANING, LUBRICATION AND STORAGE OF APPLICATOR.
- APPLY PART NUMBER 2-23419-6 LOCTITE TO THREADS OF ITEM 242.
- CRIMP HEIGHT REFERENCE SETTING WAS THE SETTING USED WHEN THE APPLICATOR WAS QUALIFIED AT THE FACTORY. ADJUSTMENT MAY BE NECESSARY WHEN RUNNING APPLICATOR IN THE FIELD.
- APPLY TORQ-SEAL IN ALLEN SOCKET TO FILL HOLE AFTER FLAT HD HAS BEEN ADJUSTED TO CORRECT HEIGHT AT QUALIFICATION. APPLY #1-23419-5 LOC-TITE TO THREADS.
- UNLESS SPECIFIED OTHERWISE TORQUE VALUES SHALL BE USED PER DOCUMENT, 101-35000.

ENTRY LEVEL APPLICATOR		ITEM SUBSTITUTION LIST		
PART NUMBER	SAME AS	ITEM	ITEM DESCRIPTION	SUBSTITUTE PART NUMBER
8-2836230-1	2836230-1	1	WIRE CRIMPER	3-1803664-7
8-2836230-2	2836230-2	3	INSULATION CRIMPER	3-1803597-8
9-2836230-1	2-2836230-1	46	BASIC SUB -ASSEMBLY	1803940-9
9-2836230-2	2-2836230-2	141	BASIC SUB -ASSEMBLY	1-1803940-0
			LUBRICATOR	DELETE

***WARNING**
ON INSTALLATION, SET WIRE DISC TO CRIMP HEIGHT REFERENCE SETTING FOR LARGEST WIRE SIZE. CRIMP HEIGHT REFERENCE SETTINGS GREATER THAN THE VALUE SHOWN MAY CAUSE DAMAGE TO THE CRIMP TOOLING. REFER TO THE INSTRUCTION SHEET FOR PROPER SETUP AND ADJUSTMENTS.

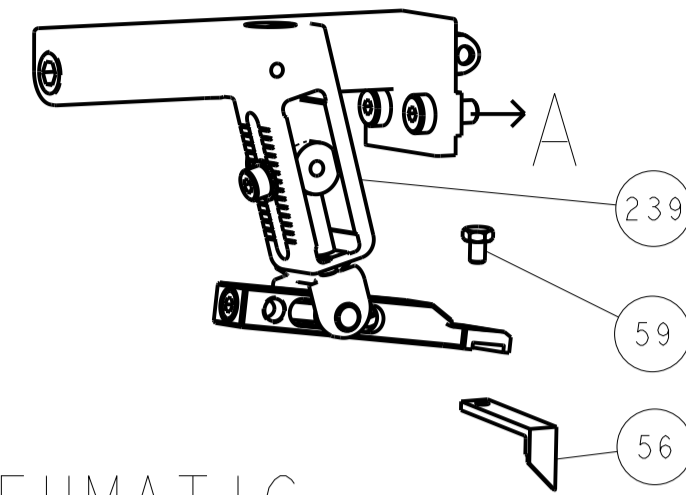
PACIFIC VERSION
Shown on sheets 3 of 4 & 4 of 4
(Atlantic version shown on sheets 1 of 4 & 2 of 4)

LOC	DIST	REV	DATE	BY	APPV
A	66				

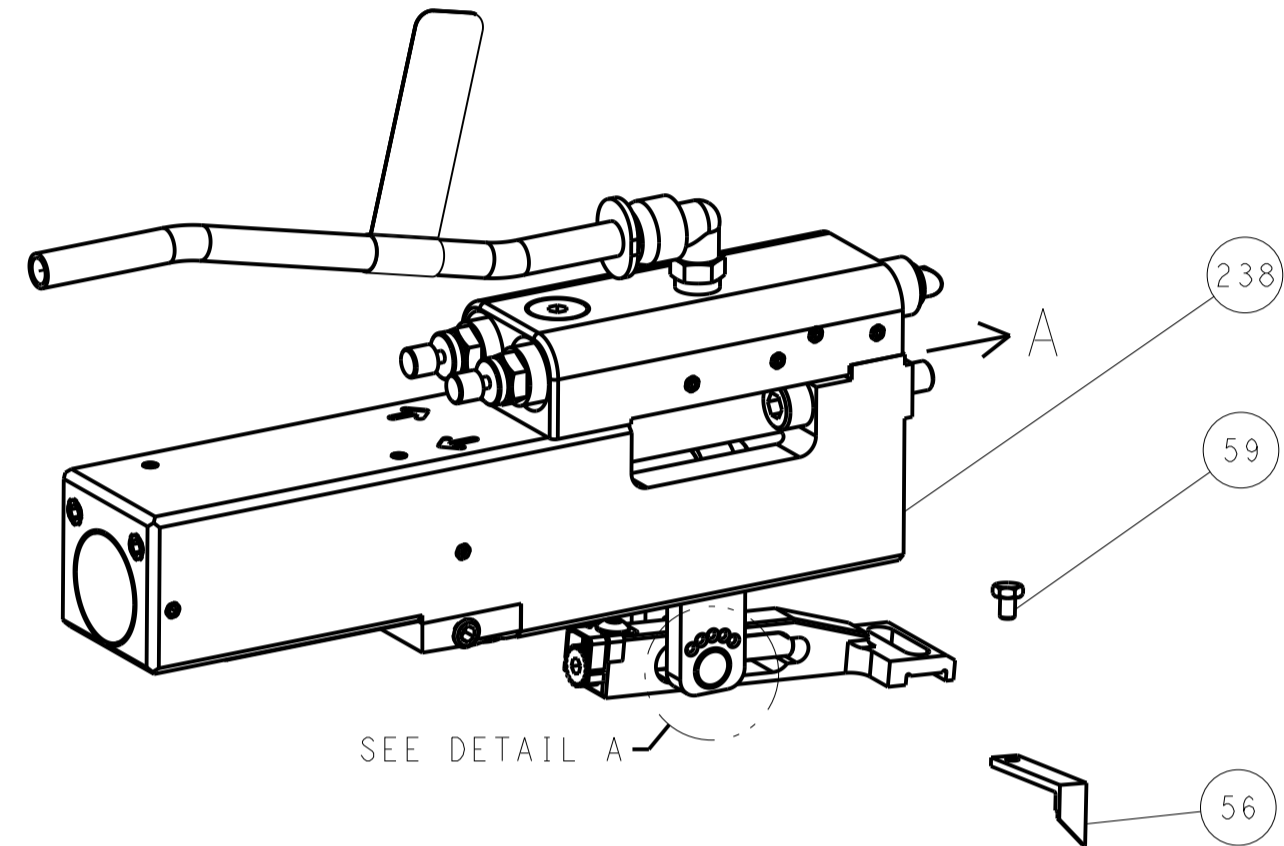
REV	DATE	DESCRIPTION	DATE	BY	APPV
-	1 1	2119082-2			244
-	1 1	2079764-1			243
3	1 1	2119083-1			242
-	1 1	7-18023-7			241
-	- 1	2119580-1			239
-	1 -	2844940-1			238
-	REF REF	994970-2			164
-	1 -	2119641-2			151
-	1 1	2168083-8			144
-	4 4	2168083-9			143
-	- 1	2119653-2			142
-	1 1	1-1803583-0			141
-	1 1	1803516-1			140
-	1 1	2844908-1			99
-	1 1	2844907-1			98
-	1 1	455888-7			82
-	1 1	1803607-3			71
-	1 1	2119740-1			67
-	2 2	2168078-1			66
-	1 1	5-18022-5			59
5	1 1	985575-3			57
-	1 1	1338683-8			56
-	2 2	1-2168083-0			53
-	1 1	5018030-1			52
-	1 1	811242-5			51
-	1 1	690753-2			50
-	1 2	18023-9			49
-	- 1	2119652-1			48
-	1 1	1803602-1			41
-	1 1	1752356-3			34
-	2 2	2079383-5			33
-	2 2	2-2844962-8			30
-	1 1	2844992-1			29
-	1 1	455888-3			28
-	1 1	1320928-2			24
-	1 1	2168083-2			21
-	2 2	1-18028-2			20
-	1 1	2119533-1			19
1	1 1	2119806-1			13
-	1 1	3-22280-3			12
-	1 1	1-356885-4			11
-	1 1	2119805-1			10
1	1 1	318707-1			9
1	1 1	8-1803056-0			8
-	- -	-			7
-	- -	-			6
-	1 1	2119781-1			5
-	1 1	238011-4			4
1	1 1	3-1803018-8			3
-	1 1	1-455888-4			2
1	1 1	3-1803241-7			1

DIMENSIONS:		TOLERANCES UNLESS OTHERWISE SPECIFIED:		DWG		REV	
mm	0 PLC ±	1 PLC ±	2 PLC ±	3 PLC ±	4 PLC ±	25FEB2016	25FEB2016
ANGLES	FINISH			NAME		TE Connectivity	
				L. ZHANG		Harrisburg, PA 17105-3608	
MATERIAL		FINISH		PRODUCT SPEC		Ocean Side Feed Applicator	
				APPLICATION SPEC		SIZE CAGE CODE DRAWING NO	
				WEIGHT		A1 00779 C=2836230	
				Customer Accessible Production Drawing		SCALE 1:2 SHEET 3 OF 4 REV C1	

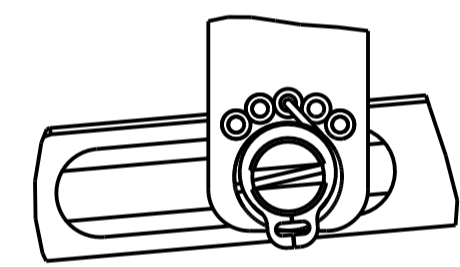
FEED TYPE MECHANICAL



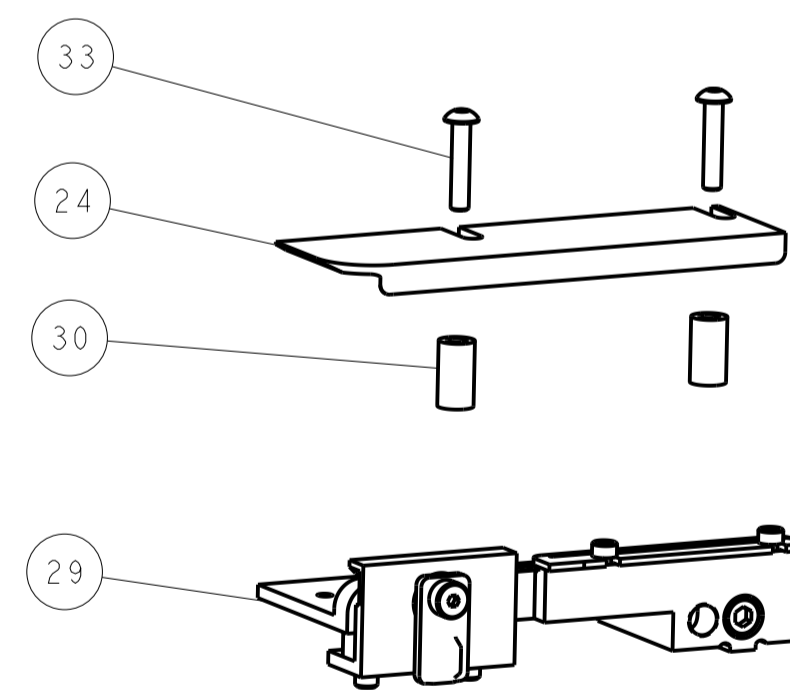
PNEUMATIC



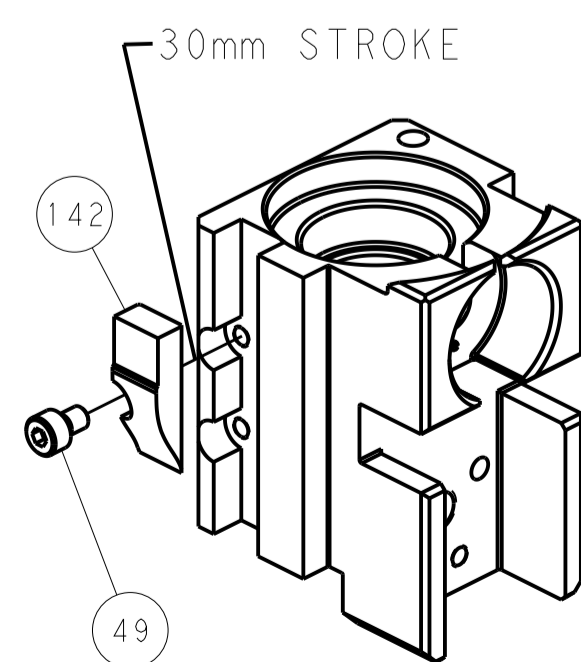
FEED SPRING SETTING POSITION (SHOWN FROM REAR SIDE)



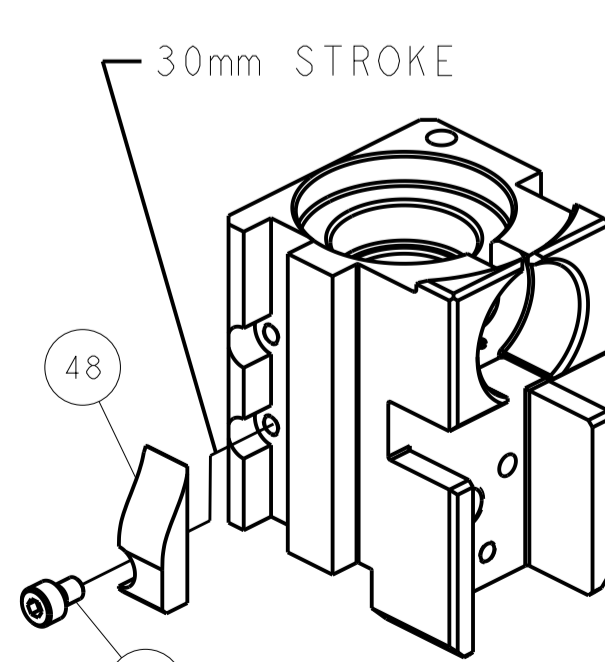
DETAIL A



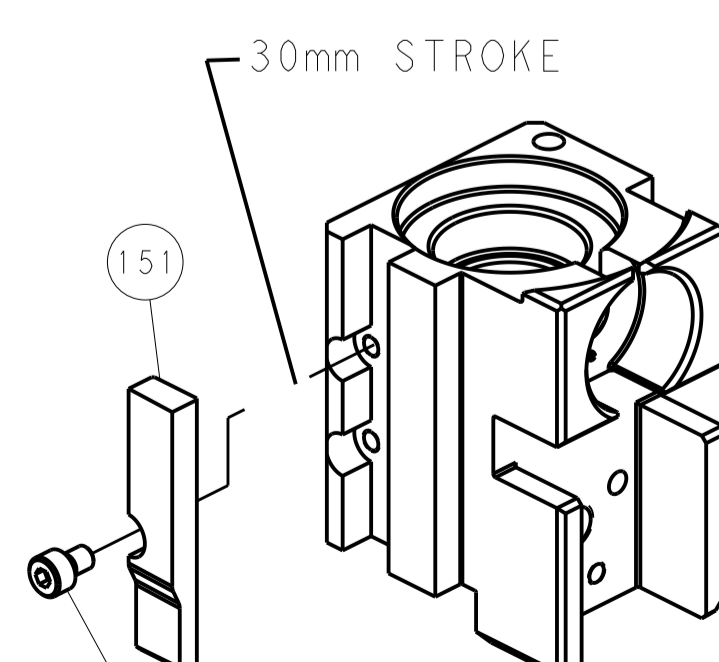
CAM POSITIONS



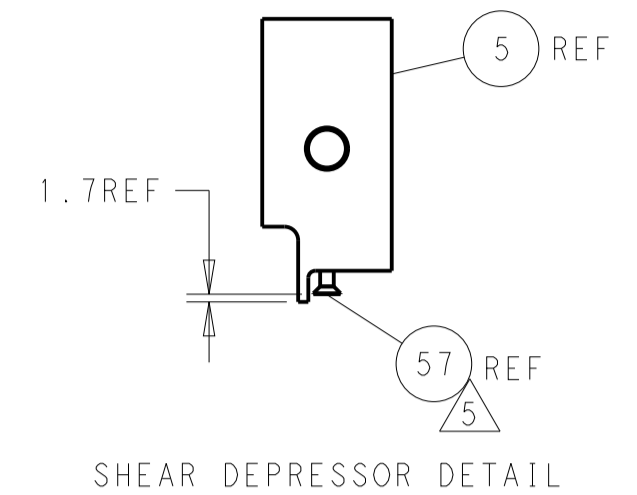
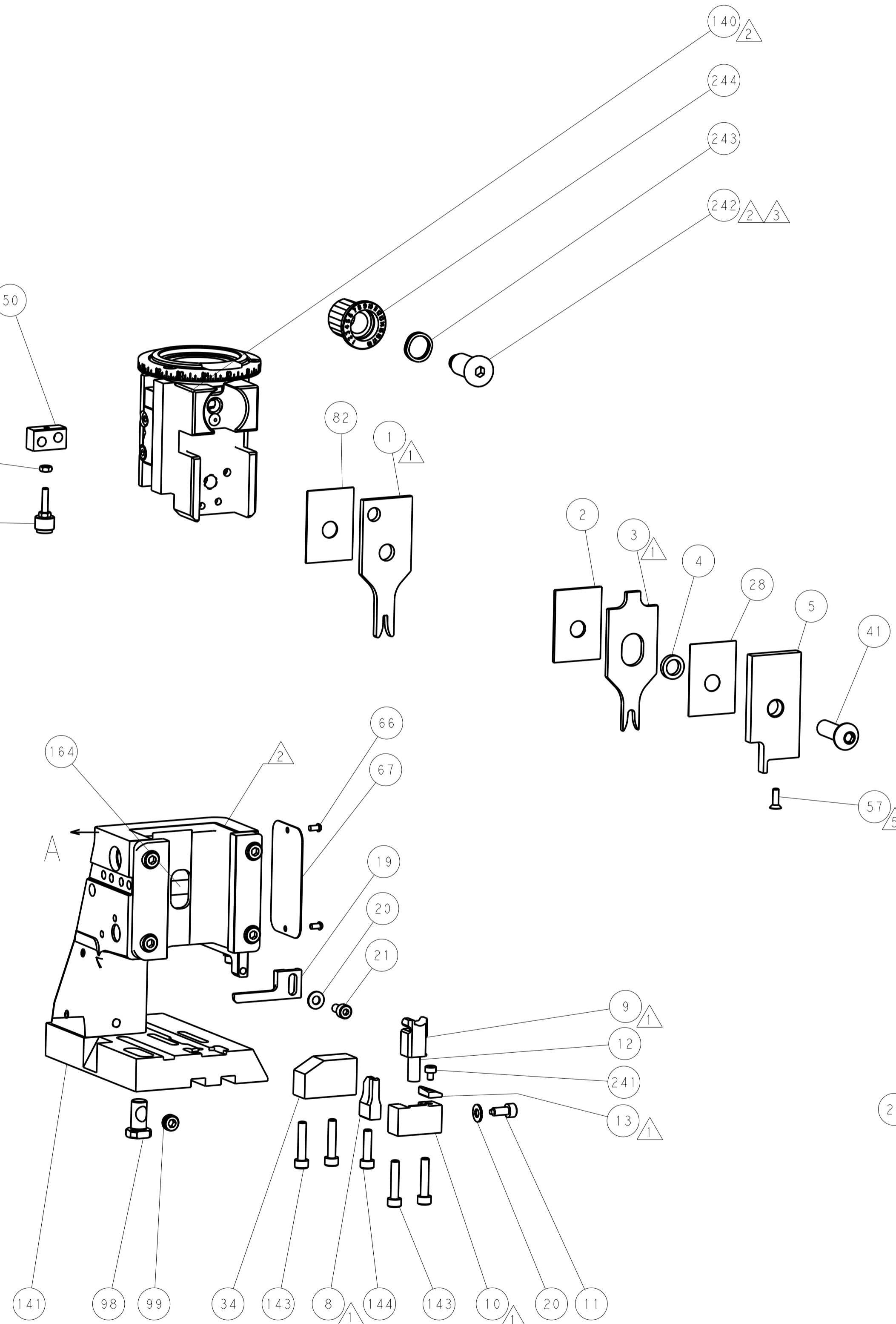
MECHANICAL POST FEED



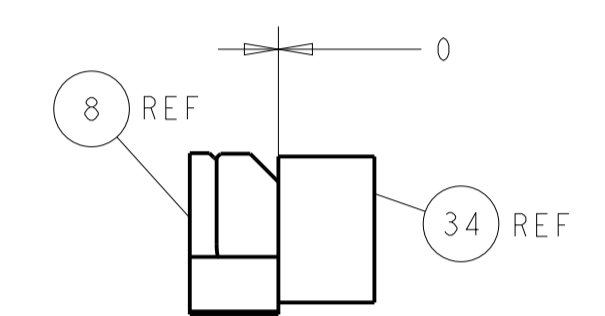
MECHANICAL PRE FEED



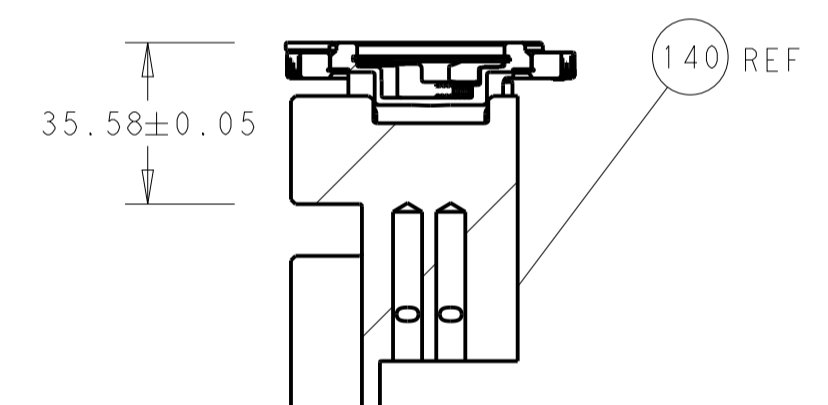
AIR FEED



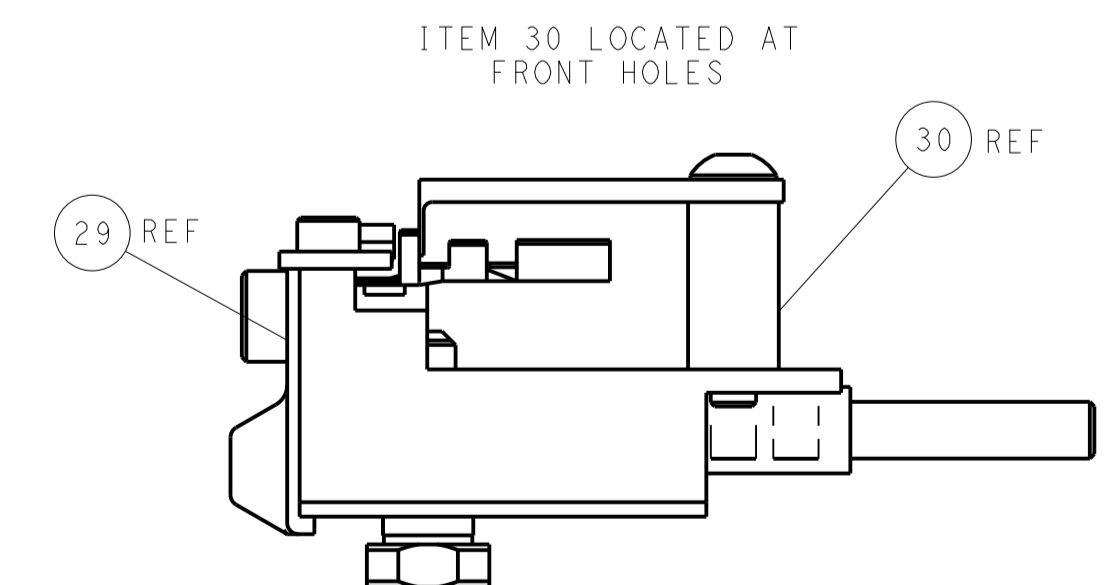
SHEAR DEPRESSOR DETAIL



TERMINAL SUPPORT LOCATION



RAM SET-UP



FEED TRACK POSITION GUIDE BY INSULATION BARREL

PACIFIC VERSION
 Shown on sheets 3 of 4 & 4 of 4
 (Atlantic version shown on sheets 1 of 4 & 2 of 4)

LOC	DIST	REVISIONS			
A	66	REV	DATE	BY	APP'D
		1	SEE SHEET 1		

<small>THIS DRAWING IS UNPUBLISHED. RELEASED FOR PUBLICATION BY TFCO ELECTRONICS CORPORATION. ALL RIGHTS RESERVED. COPYRIGHT 20</small>		<small>THIS DRAWING IS UNPUBLISHED. RELEASED FOR PUBLICATION BY TFCO ELECTRONICS CORPORATION. ALL RIGHTS RESERVED. COPYRIGHT 20</small>		<small>THIS DRAWING IS UNPUBLISHED. RELEASED FOR PUBLICATION BY TFCO ELECTRONICS CORPORATION. ALL RIGHTS RESERVED. COPYRIGHT 20</small>		<small>THIS DRAWING IS UNPUBLISHED. RELEASED FOR PUBLICATION BY TFCO ELECTRONICS CORPORATION. ALL RIGHTS RESERVED. COPYRIGHT 20</small>		<small>THIS DRAWING IS UNPUBLISHED. RELEASED FOR PUBLICATION BY TFCO ELECTRONICS CORPORATION. ALL RIGHTS RESERVED. COPYRIGHT 20</small>	
DIMENSIONS: mm 		TOLERANCES UNLESS OTHERWISE SPECIFIED: 0 PLC ± 1 PLC ± 2 PLC ± 3 PLC ± 4 PLC ± ANGLES ±		DWG: J. HOU 25FEB2016 CHK: L. ZHANG 25FEB2016 APVD: H. GUO 25FEB2016		NAME: Ocean Side Feed Applicator SIZE: A1 CAGE CODE: 00779 DRAWING NO: 2836230		RESTRICTED TO: - SCALE: 1:2 SHEET: 4 OF 4 REV: C1	