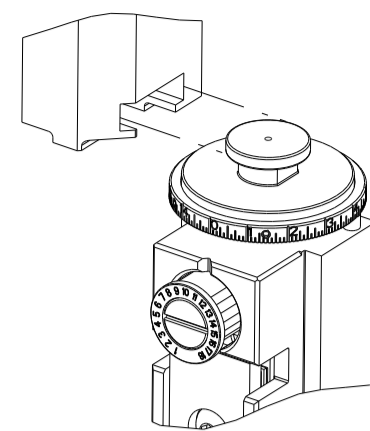


PART NUMBER	REVISION	DESCRIPTION	FEED TYPE
2836263-2	H	FINE CRIMP HEIGHT ADJUST	PNEUMATIC
3-2836263-2	H	FINE CRIMP HEIGHT ADJUST	DOUBLE ACTING PNEUMATIC WITH SENSORS
5-2836263-2	H	SEAL STRIPPER CRIMPER TERMINATING UNIT	PNEUMATIC
7-2836263-2	H	PNEUMATIC AND CRIMP TOOLING KIT	PNEUMATIC
7-2836263-7	A	CRIMP TOOLING KIT	-

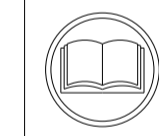
ATLANTIC VERSION TERMINATOR INTERFACE ADAPTER



APPLICATOR DATA		
CRIMP	SIZE	TYPE
WIRE	1.17 mm (.046)	F
INSUL	-	-
APPLICATOR INSTRUCTIONS 408-35042		

TERMINAL DATA: TE TERMINAL		TE CRIMP SPECIFICATION	
TERMINAL NAME: CENTER CONTACT, SOCKET, 180 DEG MINI COAX			
WIRE STRIP LENGTH		INSULATION DIAMETER RANGE	
2.35-2.65 mm [.093-.104 IN]		∅	
TERMINAL APPLICATION SPECIFICATION	114-94413	-	-
TERMINALS APPLIED			
TE TERMINAL	TE TERMINAL	TE TERMINAL	TE TERMINAL
2298121-1	2389397-1	1-2389397-1	

WIRE SIZE	CRIMP HEIGHT mm [INCH]	CRIMP HEIGHT REFERENCE SETTING
RTK031	0.69 +/- 0.03 [.027 +/- .001]	5.7



- RECOMMENDED SPARE PARTS
- REFER TO SUPPLIED INSTRUCTION SHEET FOR CLEANING, LUBRICATION AND STORAGE OF APPLICATOR.
- CRIMP HEIGHT REFERENCE SETTING WAS THE SETTING USED WHEN THE APPLICATOR WAS QUALIFIED AT THE FACTORY. ADJUSTMENT MAY BE NECESSARY WHEN RUNNING APPLICATOR IN THE FIELD.
- TERMINAL PITCH NOT COMPATIBLE WITH MECHANICAL FEED.
- THIS APPLICATOR IS EQUIPPED WITH THE DOUBLE ACTING FEED WITH SENSORS AND IS APPLICATION SPECIFIC AND DOES NOT REQUIRE ITEMS 49 & 248.
- TERMINAL LUBRICANT IS RECOMMENDED.
- 7. UNLESS SPECIFIED OTHERWISE TORQUE VALUES SHALL BE USED PER DOCUMENT, 101-35000.
- ITEM 19 (STRIPPER) MAY BE REMOVED FOR CERTAIN LEADMAKER APPLICATIONS.

**\*WARNING**  
ON INSTALLATION, SET WIRE DISC TO CRIMP HEIGHT REFERENCE SETTING FOR LARGEST WIRE SIZE. CRIMP HEIGHT REFERENCE SETTINGS GREATER THAN THE VALUE SHOWN MAY CAUSE DAMAGE TO THE CRIMP TOOLING, REFER TO THE INSTRUCTION SHEET FOR PROPER SETUP AND ADJUSTMENTS.

**ATLANTIC VERSION**  
Shown on sheets 1 of 4 & 2 of 4  
(Pacific version shown on sheets 3 of 4 & 4 of 4)

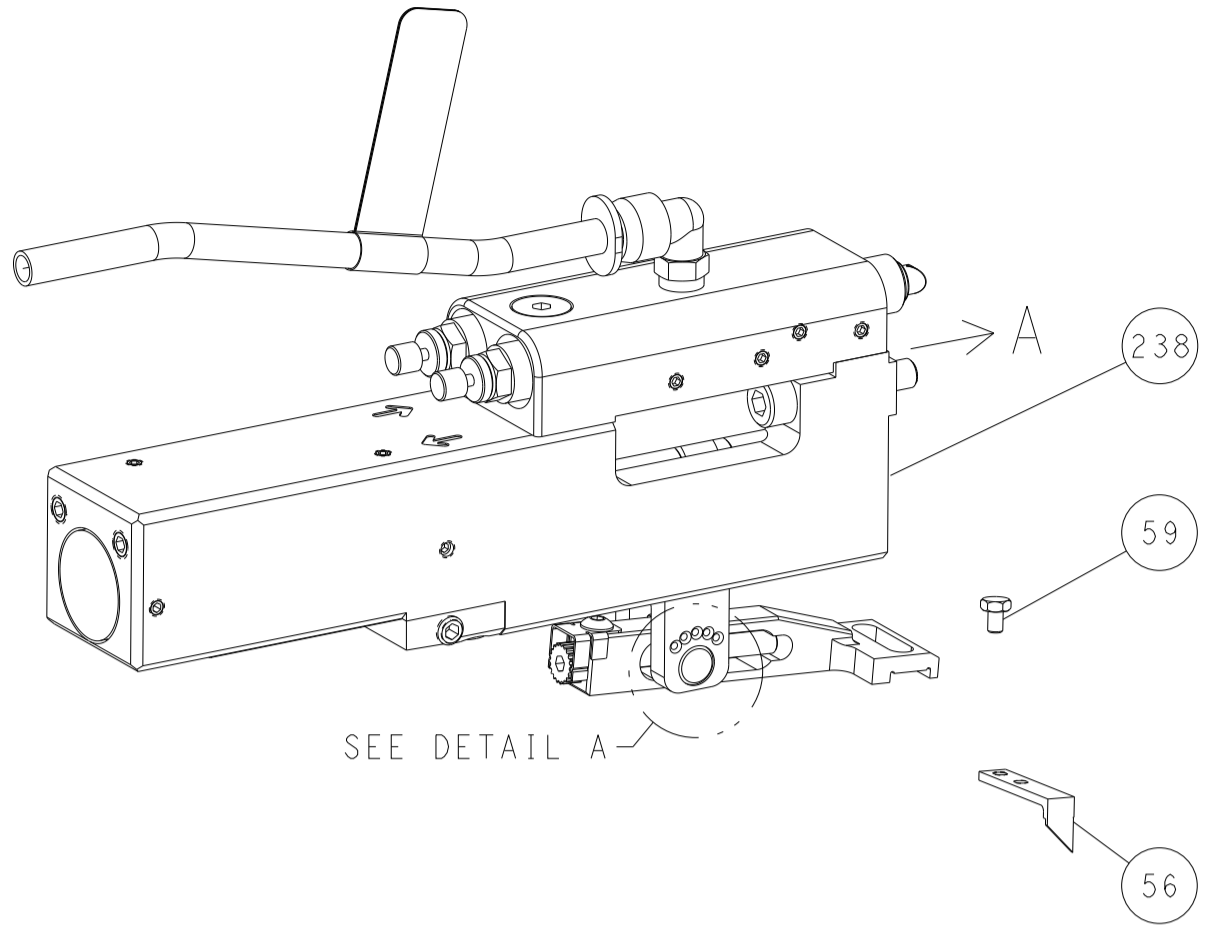
LOC	DIST	REVISIONS					
A	66	P	LTN	DESCRIPTION	DATE	OWN	APVD
		G1		ECR-23-167776	28FEB2023	TB	GB
		G2		ECR-23-171234	04APR2023	TB	GB
		H		ECR-23-173965	01MAY2023	TB	GB
		H1		ECR-23-180042	03JUL2023	FZ	MP

-	1	1	1	1	2392024-3	TONKER	300
-	1	1	1	1	22278-9	SPRING, COMPRESSION	299
-	4	4	4	4	4-18032-3	SCR, SET, FLT PNT, M3 X 6.0	298
-	1	1	1	1	1803944-1	SPACER, TONKER	297
-	-	1	-	-	2-1803583-1	APPLICATOR BASIC ASSEMBLY, SF	292
-	-	-	1	-	2844950-1	AIR FEED MODULE	290
-	1	1	1	1	2-1722335-1	THREAD BOLT GEWINDEBOLZEN	261
-	1	1	-	1	2119641-1	FEED CAM, AIR FEED	248
-	1	1	1	1	7-18023-7	SCR, SKT HD CAP M3 X 4.0	241
-	1	1	-	1	2844940-1	AIR FEED MODULE	238
-	REF	REF	REF	REF	994970-2	COUNTER, MAGNETIC	164
-	1	1	1	1	1-22281-8	SPRING, COMPRESSION	121
-	1	1	1	1	2119955-1	ASSY, LUBRICATOR, SIDE FEED	113
-	1	1	1	1	2844908-1	SCREW, LOCKING	99
-	1	1	1	1	2844907-1	POST, LOCKING	98
-	1	1	1	1	1-690438-0	FRONT STRIP GUIDE	96
-	2	2	2	2	2168083-1	SCR, SKT HD CAP, RoHS, M3 X 8.0	95
-	1	1	1	1	2168083-6	SCR, SKT HD CAP, RoHS, M5 X 65	93
-	1	1	1	1	1-455888-1	SPACER, CRIMPER	82
-	1	1	1	1	1803607-3	DOCUMENTATION PACKAGE	71
-	1	1	1	1	2119740-1	TAG, IDENTIFICATION	67
-	2	2	2	2	2168078-1	SCREW, DRIVE, RH, RoHS, 2 x .188	66
-	1	1	1	1	2-18032-5	SCR, SET, FLT PNT, M5 X 20.0	61
-	1	1	1	1	2168083-2	SCR, SKT HD CAP, RoHS, M4 X 8.0	60
-	1	1	1	1	5-18022-5	SCR, HEX HD CAP, M4 X 6.0	59
-	1	1	1	1	1338685-1	PAWL, FEED	56
-	4	4	4	4	2168083-3	SCR, SKT HD CAP, RoHS, M4 X 12.0	54
-	2	2	2	2	2168083-3	SCR, SKT HD CAP, RoHS, M4 X 12.0	53
-	1	1	-	1	18023-9	SCR, SKT HD CAP M4 X 6.0	49
-	1	-	1	1	1803583-9	APPLICATOR BASIC ASSEMBLY, SF	46
-	1	1	1	1	1803515-1	RAM ASSEMBLY, SF ATLANTIC	44
-	1	1	1	1	1803602-1	SCR, BHSC, RoHS (M8 X 25)	41
-	1	1	1	1	7-1752356-1	SUPPORT, TERMINAL	34
-	2	2	2	2	2079383-5	SCR, BHSC, RoHS (M4 X 20)	33
-	2	2	2	2	2-2844962-3	SPACER, CYLINDRICAL, STRIP GUIDE	30
-	1	1	1	1	3-2844938-5	PLATE, STRIP GUIDE	29
-	1	1	1	1	455888-8	SPACER, CRIMPER	28
-	2	2	2	2	22283-1	SPRING, COMPRESSION	27
-	1	1	1	1	356835-1	LEVER, DRAG RELEASE	26
-	1	1	1	1	1803142-1	DRAG, TERMINAL	25
-	1	1	1	1	1320928-2	STRIP GUIDE	24
-	1	1	1	1	980371-4	SCR, SKT HD SHLDR 5.0 DIA X 6.0	23
-	1	-	1	1	2168083-2	SCR, SKT HD CAP, RoHS, M4 X 8.0	21
-	2	1	2	2	1-18028-2	WASHER, FLAT, REG M4	20
-	1	-	1	1	2119533-5	STRIPPER, SIDE FEED	19
-	1	1	1	1	2119806-1	INSERT, SHEAR	13
-	1	1	1	1	3-22280-3	SPRING, COMPRESSION	12
-	1	1	1	1	1-356885-5	STOP, SHEAR	11
-	1	1	1	1	2119805-1	SHEAR HOLDER, FRONT	10
-	1	1	1	1	1803095-1	FLOATING SHEAR, FRONT	9
-	1	2	1	1	1-1633933-0	ANVIL, COMBINATION	8
-	1	1	1	1	5-240641-8	SPACER	7
-	-	-	-	-	-	-	6
-	1	1	1	1	2119757-4	DEPRESSOR, SHEAR	5
-	-	-	-	-	-	-	4
-	-	-	-	-	-	-	3
-	-	-	-	-	-	-	2
-	1	2	1	1	1-1803125-5	CRIMPER, WIRE	1

DIMENSIONS:		TOLERANCES UNLESS OTHERWISE SPECIFIED:		MATERIAL:		FINISH:	
mm	0 PLC ±	1 PLC ±	2 PLC ±	3 PLC ±	4 PLC ±	ANGLES ±	
MATERIAL:				FINISH:		WEIGHT:	

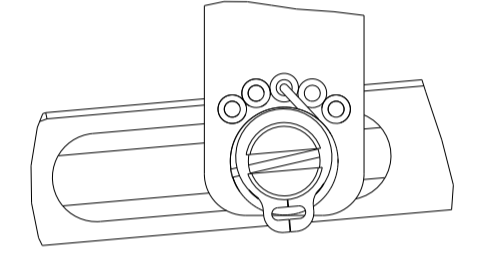
OWN	CHK	APVD	NAME	SIZE	CAGE CODE	DRAWING NO	RESTRICTED TO
M. HERR	G. BAILEY	T. ELBIN	Ocean Side Feed Applicator	A1	00779	2836263	
Customer Accessible Production Drawing							
SCALE: 1:2 SHEET 1 OF 4 REV: H1							

# FEED TYPE PNEUMATIC



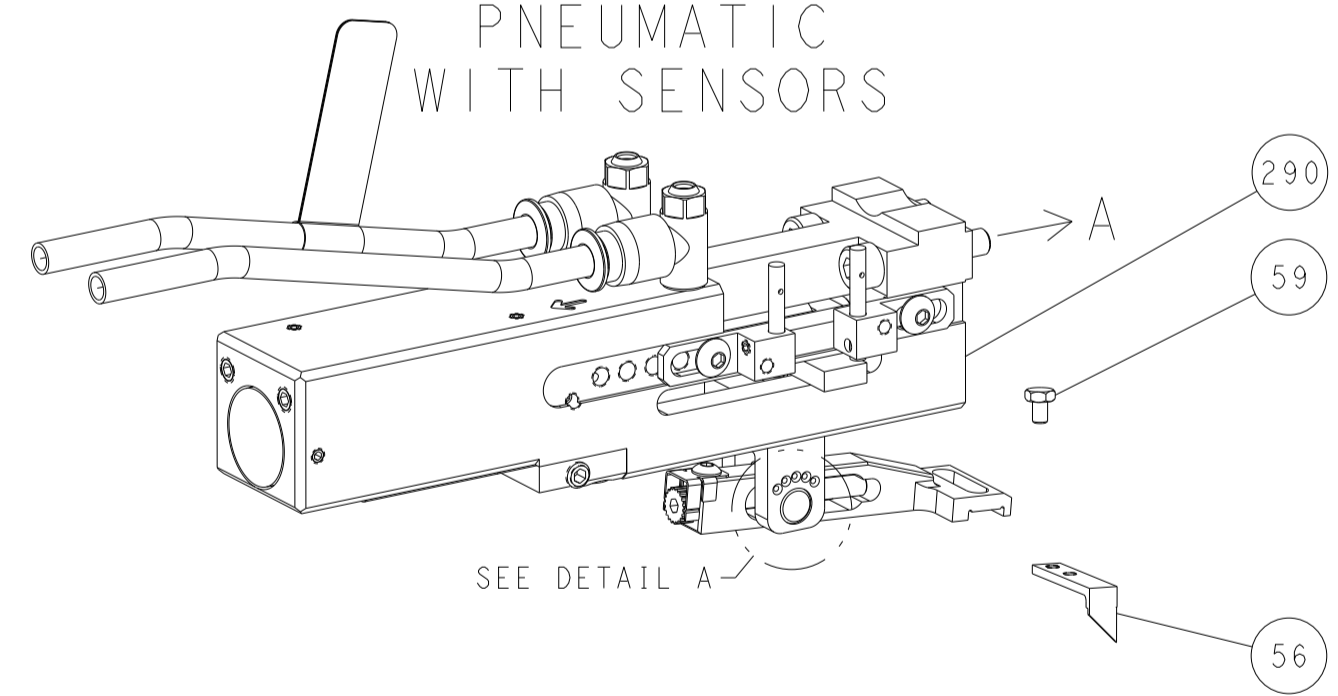
SEE DETAIL A

## FEED SPRING SETTING POSITION (SHOWN FROM REAR SIDE)



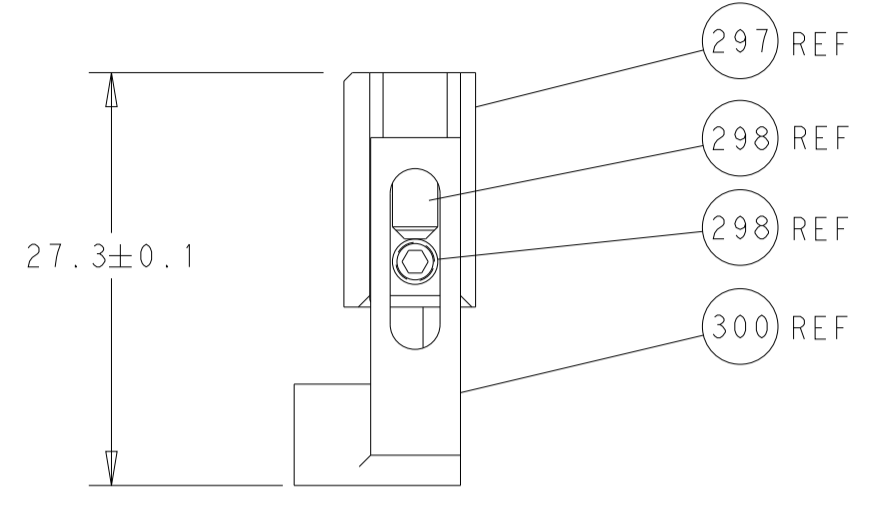
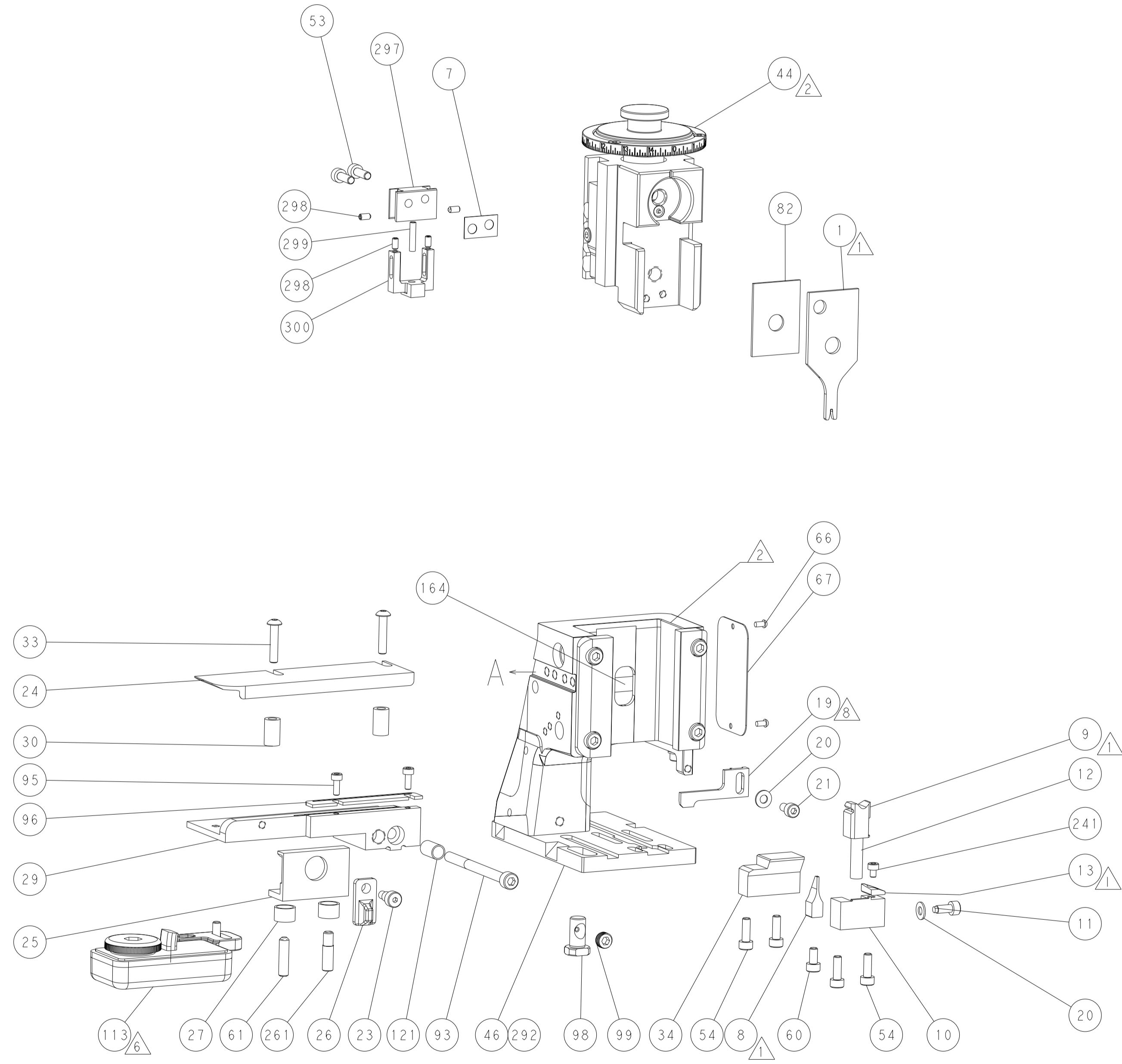
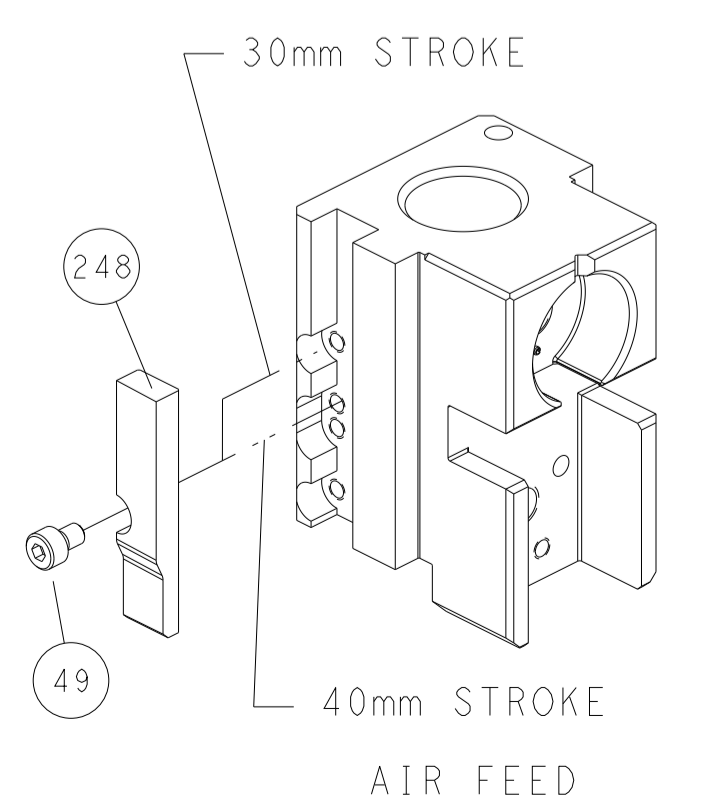
DETAIL A

## DOUBLE ACTING PNEUMATIC WITH SENSORS

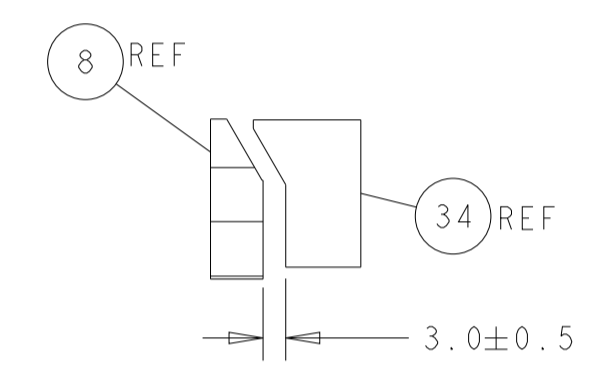


SEE DETAIL A

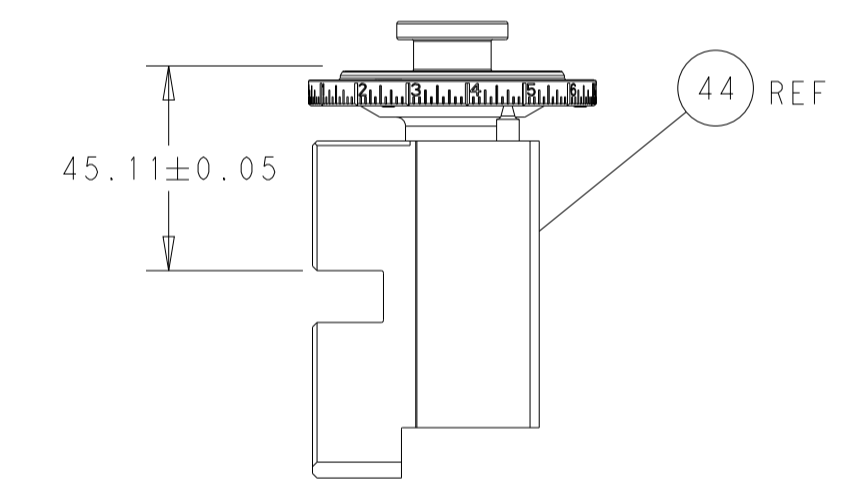
## CAM POSITION



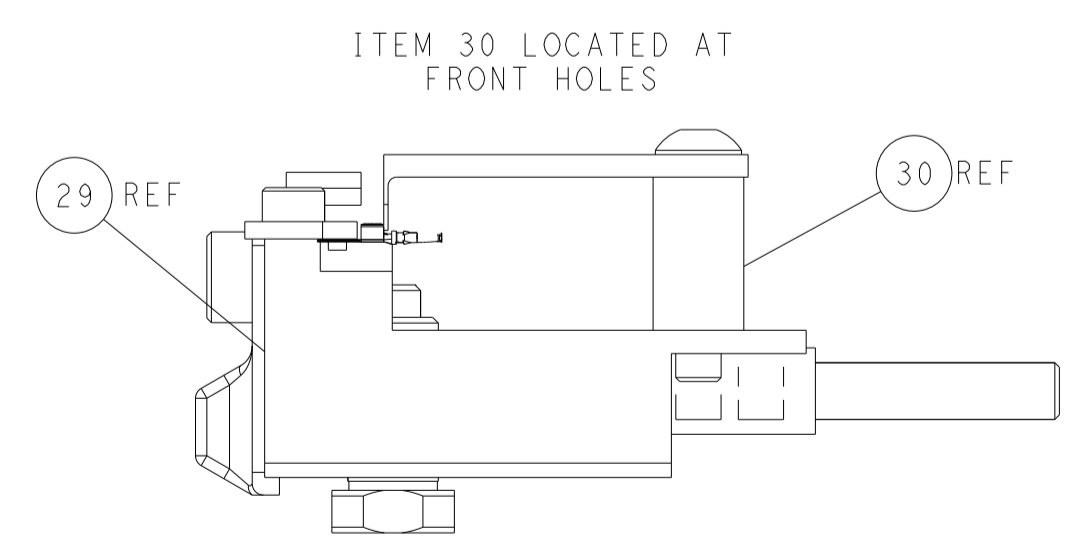
HOLD DOWN SET-UP



TERMINAL SUPPORT LOCATION



RAM SET-UP



FEED TRACK POSITION GUIDE BY WIRE BARREL

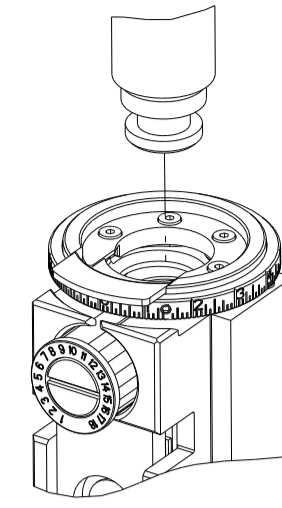
**ATLANTIC VERSION**  
 Shown on sheets 1 of 4 & 2 of 4  
 (Pacific version shown on sheets 3 of 4 & 4 of 4)

LOC	DIST	REVISIONS					
A	66	P	LTN	DESCRIPTION	DATE	OWN	APVD
		-		SEE SHEET 1			

DIMENSIONS: mm 		TOLERANCES UNLESS OTHERWISE SPECIFIED: 0 PLC ± 1 PLC ± 2 PLC ± 3 PLC ± 4 PLC ± ANGLES ± FINISH ±		DWN M_HERR 07APR2016 CHK M_HERR 08APR2016 APVD M_HERR 08APR2016 PRODUCT SPEC APPLICATION SPEC WEIGHT Customer Accessible Production Drawing		NAME Ocean Side Feed Applicator SIZE CAGE CODE DRAWING NO A1 00779 C=2836263 SCALE 1:2 SHEET 2 OF 4 REV H1		RESTRICTED TO -	
SHEETS 3 & 4 ARE NOT REQUIRED FOR ATLANTIC VERSION									

PART NUMBER	REVISION	DESCRIPTION	FEED TYPE
2-2836263-2	H	FINE CRIMP HEIGHT ADJUST	PNEUMATIC
4-2836263-2	H	FINE CRIMP HEIGHT ADJUST	DOUBLE ACTING PNEUMATIC WITH SENSORS
7-2836263-7	A	CRIMP TOOLING KIT	-

PACIFIC VERSION TERMINATOR INTERFACE ADAPTER



APPLICATOR DATA		
CRIMP	SIZE	TYPE
WIRE	1.17 mm (.046)	F
INSUL	-	-

APPLICATOR INSTRUCTIONS  
408-35042

TERMINAL DATA: TE TERMINAL		TE CRIMP SPECIFICATION	
TERMINAL NAME: CENTER CONTACT, SOCKET, 180 DEG MINI COAX			
WIRE STRIP LENGTH		INSULATION DIAMETER RANGE	
2.35-2.65 mm [1.093-.104 IN]		∅	
TERMINAL APPLICATION SPECIFICATION	114-94413	-	-
TERMINALS APPLIED			
TE TERMINAL	TE TERMINAL	TE TERMINAL	TE TERMINAL
2298121-1	2389397-1	1-2389397-1	

WIRE SIZE	CRIMP HEIGHT mm [INCH]	CRIMP HEIGHT REFERENCE SETTING
RTK031	0.69+/-0.03 [1.027+/-0.001]	5.7

- RECOMMENDED SPARE PARTS
- REFER TO SUPPLIED INSTRUCTION SHEET FOR CLEANING, LUBRICATION AND STORAGE OF APPLICATOR.
- CRIMP HEIGHT REFERENCE SETTING WAS THE SETTING USED WHEN THE APPLICATOR WAS QUALIFIED AT THE FACTORY. ADJUSTMENT MAY BE NECESSARY WHEN RUNNING APPLICATOR IN THE FIELD.
- TERMINAL PITCH NOT COMPATIBLE WITH MECHANICAL FEED.
- THIS APPLICATOR IS EQUIPPED WITH THE DOUBLE ACTING FEED WITH SENSORS AND IS APPLICATION SPECIFIC AND DOES NOT REQUIRE ITEMS 49 & 151.
- TERMINAL LUBRICANT IS RECOMMENDED.
- 7. UNLESS SPECIFIED OTHERWISE TORQUE VALUES SHALL BE USED PER DOCUMENT, 101-35000.
- ITEM 19 (STRIPPER) MAY BE REMOVED FOR CERTAIN LEADMAKER APPLICATIONS.

**\*WARNING**  
ON INSTALLATION, SET WIRE DISC TO CRIMP HEIGHT REFERENCE SETTING FOR LARGEST WIRE SIZE. CRIMP HEIGHT REFERENCE SETTINGS GREATER THAN THE VALUE SHOWN MAY CAUSE DAMAGE TO THE CRIMP TOOLING, REFER TO THE INSTRUCTION SHEET FOR PROPER SETUP AND ADJUSTMENTS.

LOC	DIST	REVISIONS					
A	66	P	LTN	DESCRIPTION	DATE	OWN	APVD
-	-	-	-	SEE SHEET 1	-	-	-

-	1	1	2392024-3	TONKER			300
-	1	1	22278-9	SPRING, COMPRESSION			299
-	4	4	4-18032-3	SCR, SET, FLT PNT, M3 X 6.0			298
-	1	1	1803944-1	SPACER, TONKER			297
-	1	-	2844950-1	AIR FEED MODULE			290
-	1	1	2-1722335-1	THREAD BOLT GEWINDEBOLZEN			261
-	1	1	7-18023-7	SCR, SKT HD CAP M3 X 4.0			241
-	-	1	2844940-1	AIR FEED MODULE			238
-	REF	REF	994970-2	COUNTER, MAGNETIC			164
	-	-	1	2119641-2	FEED CAM, AIR FEED		151
-	1	1	2168083-8	SCR, SKT HD CAP, RoHS, M4 X 16			144
-	4	4	2168083-9	SCR, SKT HD CAP, RoHS, M4 X 20			143
-	1	1	1-1803583-0	APPLICATOR BASIC ASSEMBLY, SF			141
-	1	1	1803516-1	RAM ASSEMBLY, SF PACIFIC			140
-	1	1	1-22281-8	SPRING, COMPRESSION			121
	-	1	1	2119955-1	ASSY, LUBRICATOR, SIDE FEED		113
-	1	1	2844908-1	SCREW, LOCKING			99
-	1	1	2844907-1	POST, LOCKING			98
-	1	1	1-690438-0	FRONT STRIP GUIDE			96
-	2	2	2168083-1	SCR, SKT HD CAP, RoHS, M3 X 8.0			95
-	1	1	2168083-6	SCR, SKT HD CAP, RoHS, M5 X 65			93
-	1	1	1-455888-1	SPACER, CRIMPER			82
-	1	1	1803607-3	DOCUMENTATION PACKAGE			71
-	1	1	2119740-1	TAG, IDENTIFICATION			67
-	2	2	2168078-1	SCREW, DRIVE, RH, RoHS, 2 x .188			66
-	1	1	2-18032-5	SCR, SET, FLT PNT, M5 X 20.0			61
-	1	1	5-18022-5	SCR, HEX HD CAP, M4 X 6.0			59
-	1	1	1338685-1	PAWL, FEED			56
-	2	2	2168083-3	SCR, SKT HD CAP, RoHS, M4 X 12.0			53
	-	-	1	18023-9	SCR, SKT HD CAP M4 X 6.0		49
-	1	1	1803602-1	SCR, BHSC, RoHS (M8 X 25)			41
-	1	1	7-1752356-1	SUPPORT, TERMINAL			34
-	2	2	2079383-5	SCR, BHSC, RoHS (M4 X 20)			33
-	2	2	2-2844962-3	SPACER, CYLINDRICAL, STRIP GUIDE			30
-	1	1	3-2844938-5	PLATE, STRIP GUIDE			29
-	1	1	455888-8	SPACER, CRIMPER			28
-	2	2	22283-1	SPRING, COMPRESSION			27
-	1	1	356835-1	LEVER, DRAG RELEASE			26
-	1	1	1803142-1	DRAG, TERMINAL			25
-	1	1	1320928-2	STRIP GUIDE			24
-	1	1	980371-4	SCR, SKT HD SHLDR 5.0 DIA X 6.0			23
-	1	1	2168083-2	SCR, SKT HD CAP, RoHS, M4 X 8.0			21
-	2	2	1-18028-2	WASHER, FLAT, REG M4			20
	-	1	1	2119533-5	STRIPPER, SIDE FEED		19
	-	1	1	2119806-1	INSERT, SHEAR		13
-	1	1	3-22280-3	SPRING, COMPRESSION			12
-	1	1	1-356885-5	STOP, SHEAR			11
-	1	1	2119805-1	SHEAR HOLDER, FRONT			10
	-	1	1	1803095-1	FLOATING SHEAR, FRONT		9
	1	1	1	9-1633933-0	ANVIL, COMBINATION		8
-	1	1	5-240641-8	SPACER			7
-	-	-	-	-			6
-	1	1	2119757-4	DEPRESSOR, SHEAR			5
-	-	-	-	-			4
-	-	-	-	-			3
-	-	-	-	-			2
	1	1	1	1-1803125-5	CRIMPER, WIRE		1

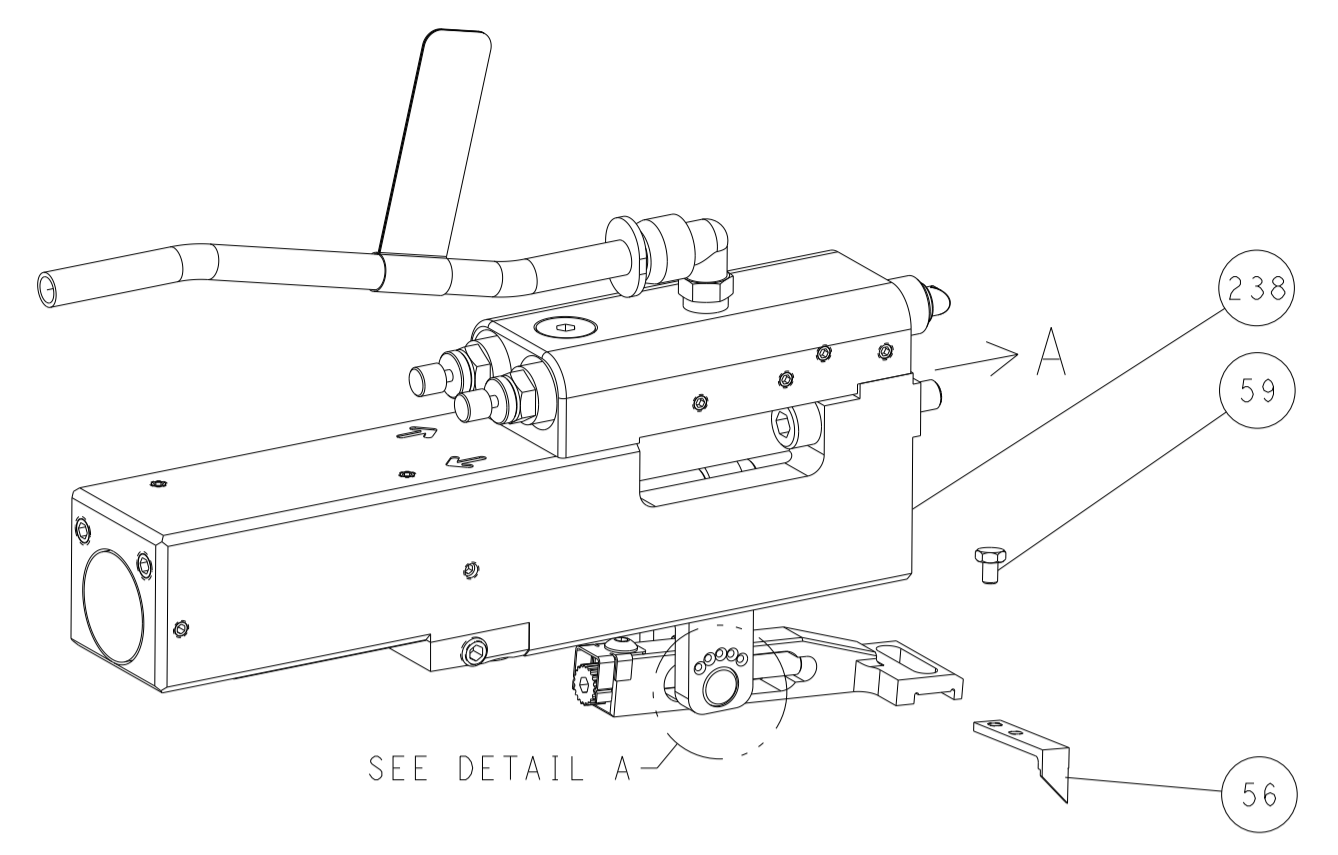
PACIFIC VERSION  
Shown on sheets 3 of 4 & 4 of 4  
(Atlantic version shown on sheets 1 of 4 & 2 of 4)

DIMENSIONS:		TOLERANCES UNLESS OTHERWISE SPECIFIED:		APPLICATOR DATA	
mm	0 PLC ±	1 PLC ±	2 PLC ±	3 PLC ±	4 PLC ±
	ANGLES	FINISH			
MATERIAL					

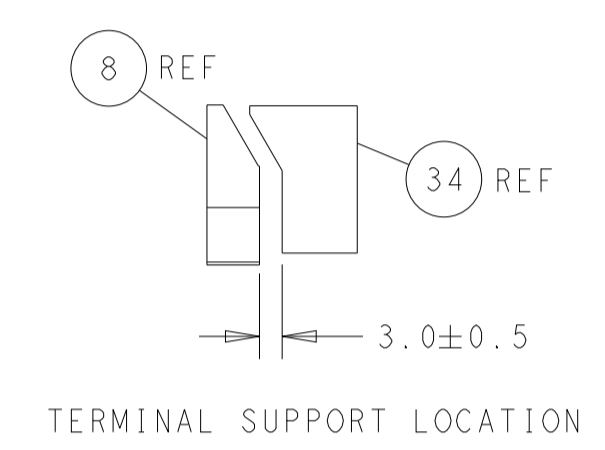
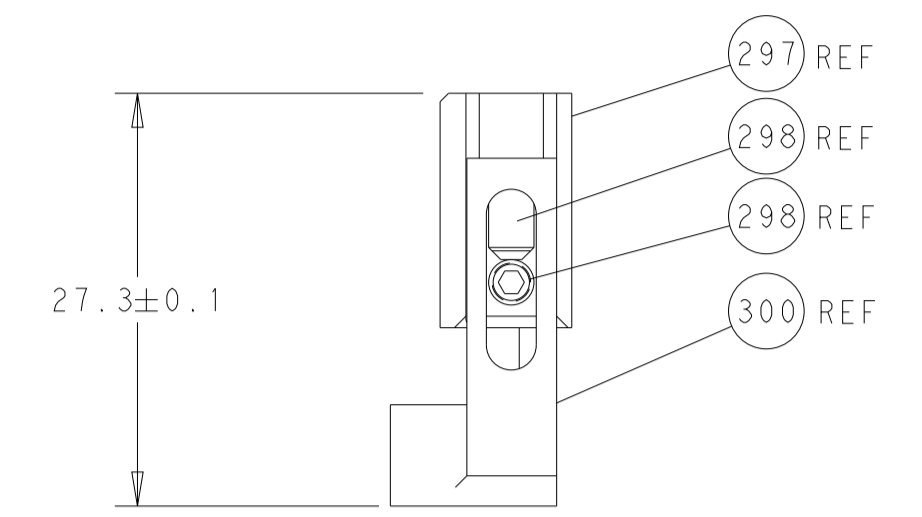
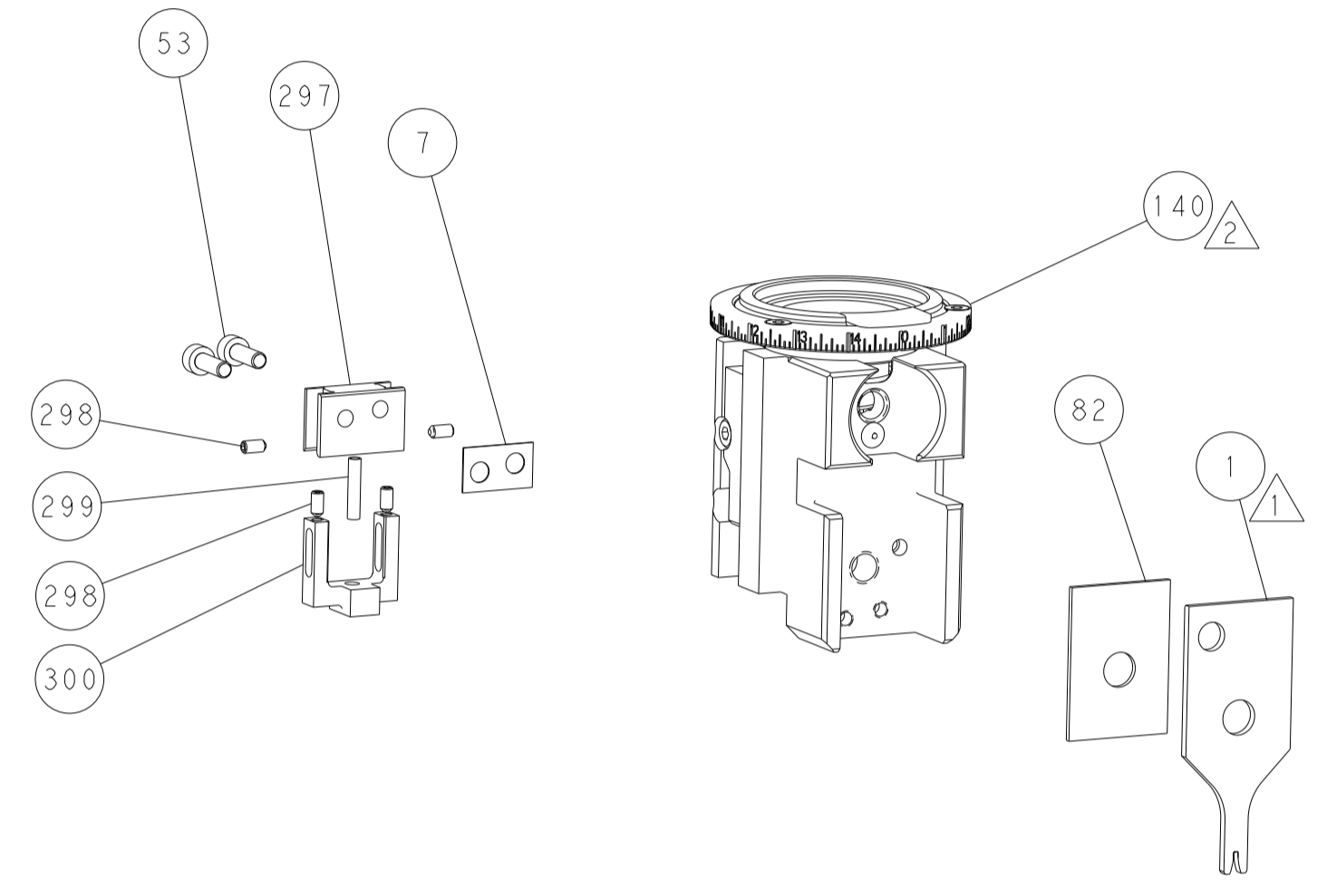
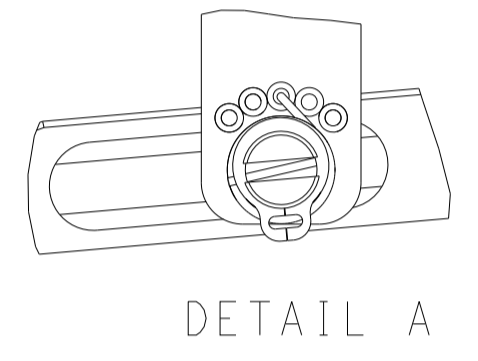
OWN	M. HERR	07APR2016	
CHK	M. HERR	08APR2016	
APVD	M. HERR	08APR2016	
NAME	Ocean Side Feed Applicator		
SIZE	CAGE CODE	DRAWING NO	RESTRICTED TO
A1	00779	2836263	
Customer Accessible Production Drawing		SCALE	SHEET 3 OF 4
		1:2	REV H1

LOC	DIST	REVISIONS					
		P	LTN	DESCRIPTION	DATE	OWN	APVD
A	66	-	-	SEE SHEET 1	-	-	-

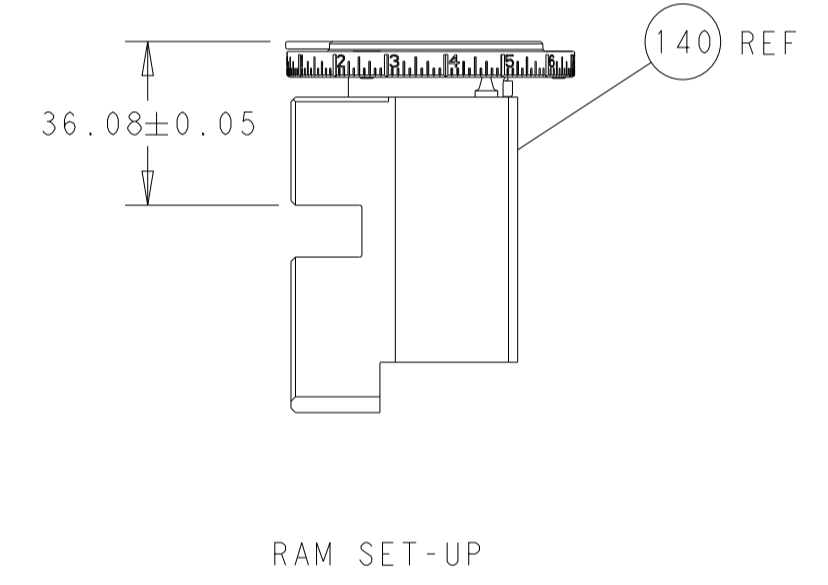
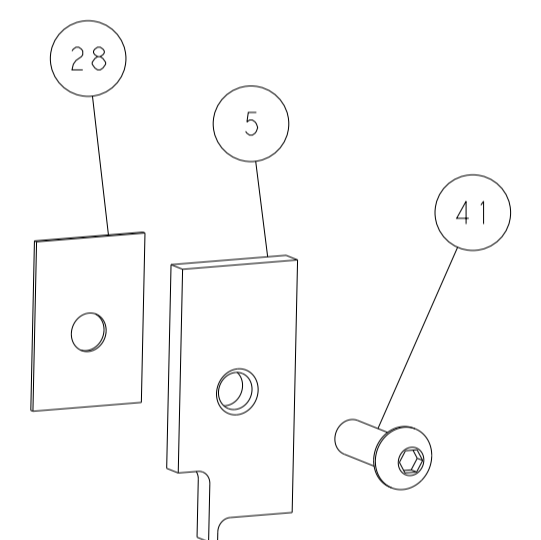
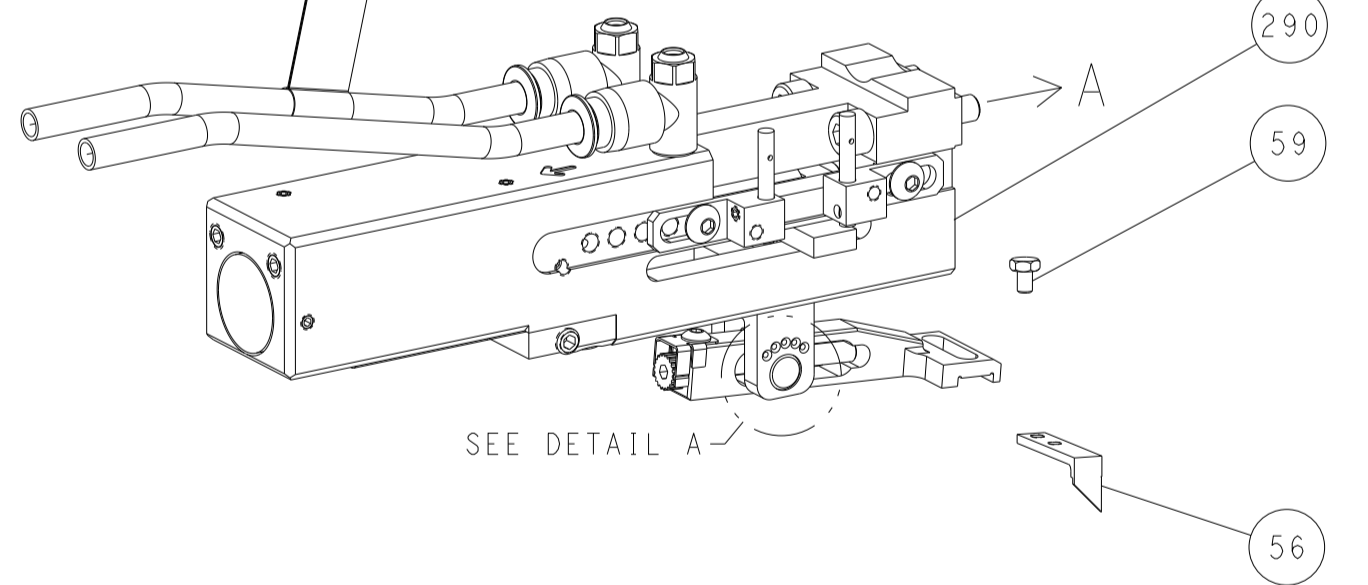
### FEED TYPE PNEUMATIC



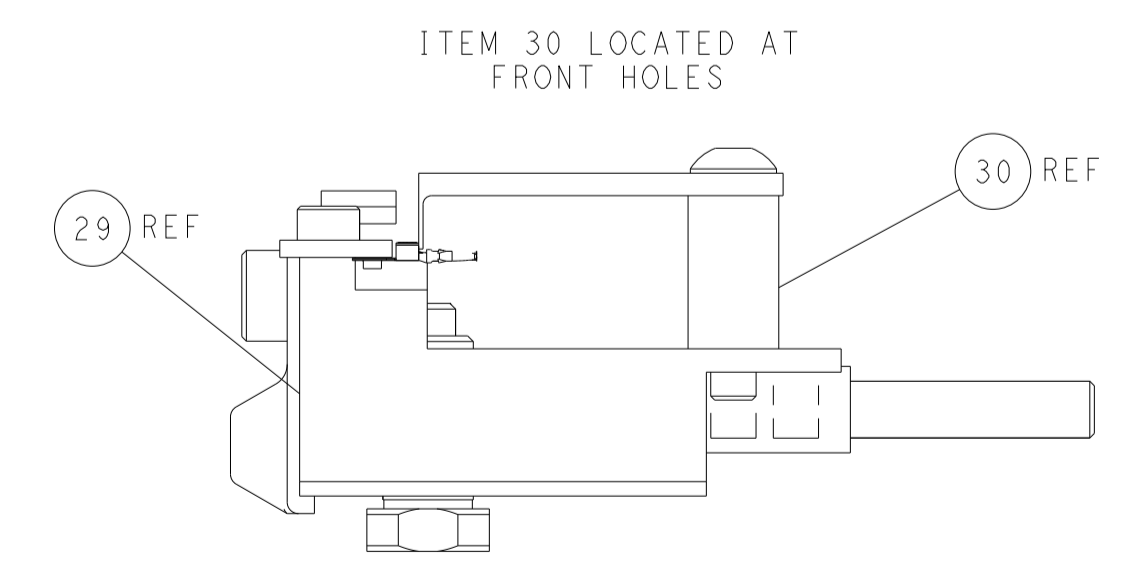
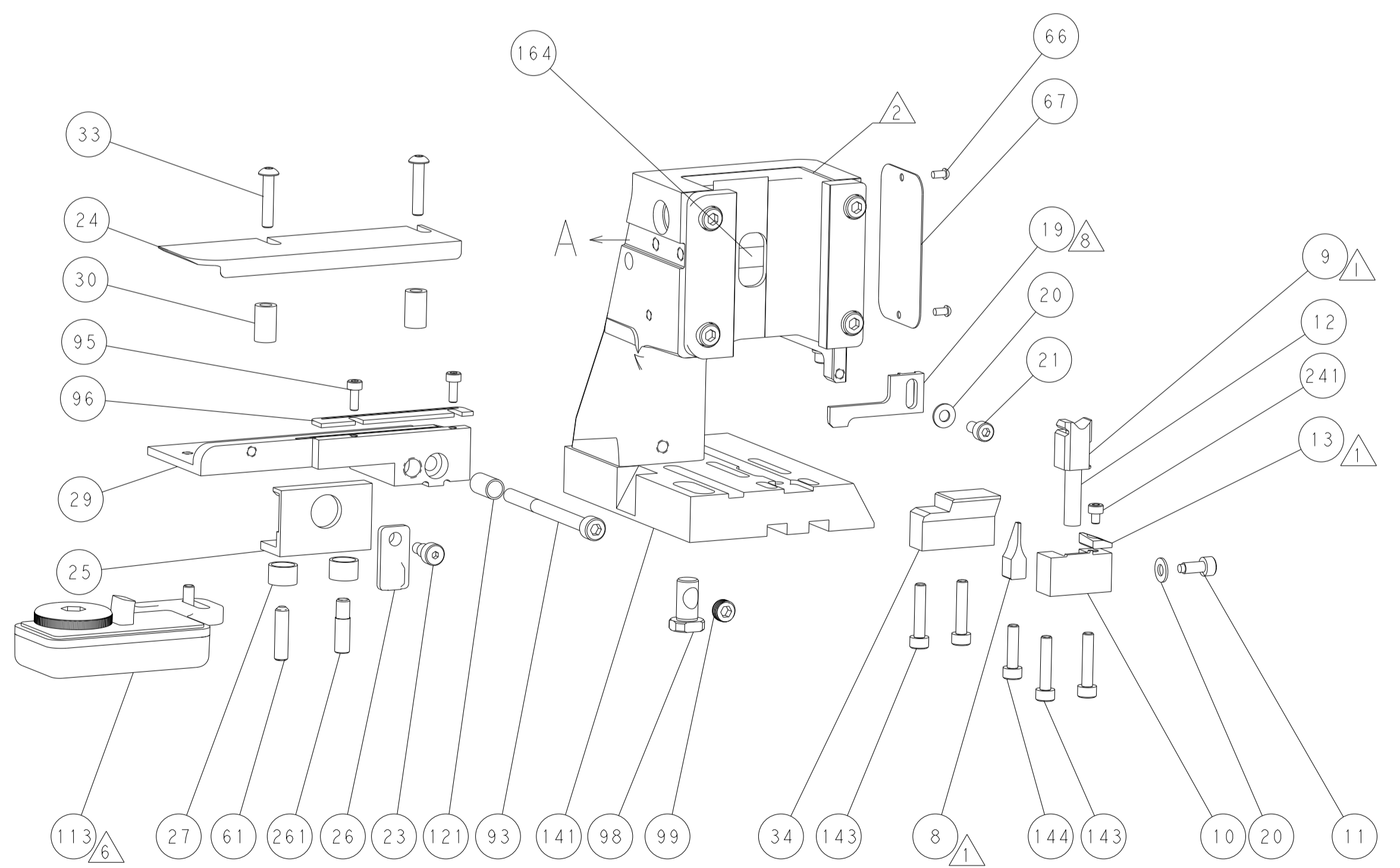
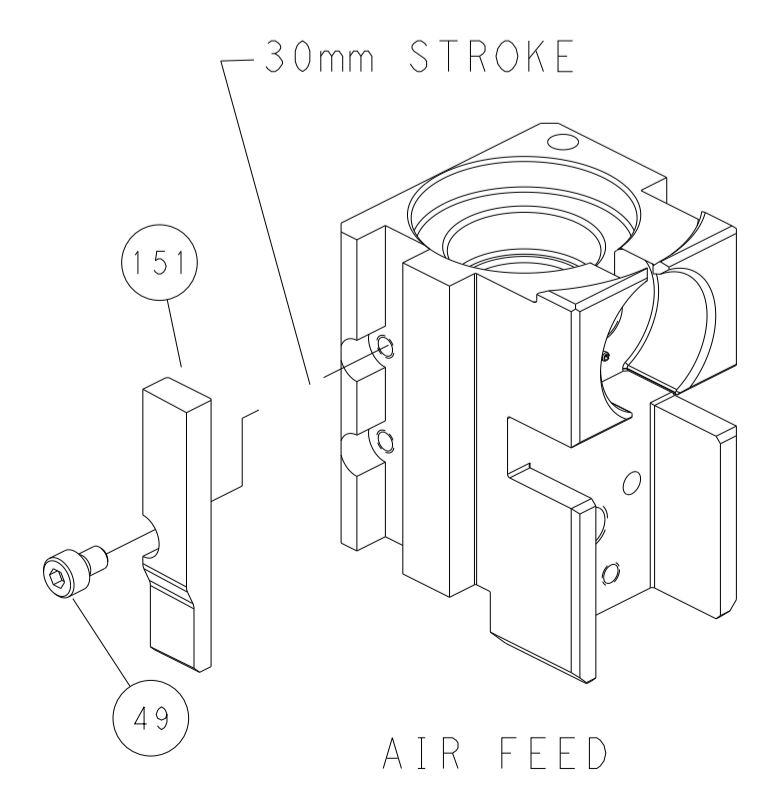
### FEED SPRING SETTING POSITION (SHOWN FROM REAR SIDE)



### DOUBLE ACTING PNEUMATIC WITH SENSORS



### CAM POSITION



**PACIFIC VERSION**  
 Shown on sheets 3 of 4 & 4 of 4  
 (Atlantic version shown on sheets 1 of 4 & 2 of 4)

<small>THIS DRAWING IS UNPUBLISHED. RELEASED FOR PUBLICATION 2016. ALL RIGHTS RESERVED. THIS DRAWING IS CONTROLLED DOCUMENT FOR TYCO ELECTRONICS CORPORATION. IT IS THE PROPERTY OF TYCO ELECTRONICS CORPORATION AND IS NOT TO BE REPRODUCED OR TRANSMITTED IN ANY FORM OR BY ANY MEANS, ELECTRONIC OR MECHANICAL, INCLUDING PHOTOCOPYING, RECORDING, OR BY ANY INFORMATION STORAGE AND RETRIEVAL SYSTEM, WITHOUT THE WRITTEN PERMISSION OF TYCO ELECTRONICS CORPORATION.</small>		DWN M_HERR 07APR2016 CHK M_HERR 08APR2016 APVD M_HERR 08APR2016	TE Connectivity Harrisburg, PA 17105-3608
DIMENSIONS: mm TOLERANCES UNLESS OTHERWISE SPECIFIED: 0 PLC ± 1 PLC ± 2 PLC ± 3 PLC ± 4 PLC ± ANGLES ± FINISH		NAME PRODUCT SPEC APPLICATION SPEC WEIGHT SCALE 1:2	SIZE CAGE CODE DRAWING NO RESTRICTED TO A1 00779 ©=2836263 SHEET 4 OF 4 REV H1
MATERIAL:		CUSTOMER ACCESSIBLE PRODUCTION DRAWING	SHEETS 1 & 2 ARE NOT REQUIRED FOR PACIFIC VERSION