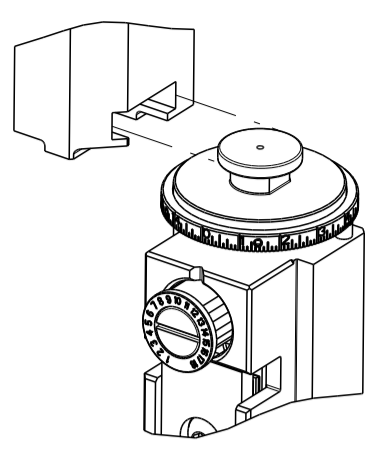


PART NUMBER	REVISION	DESCRIPTION	FEED TYPE
2836274-2	L	FINE CRIMP HEIGHT ADJUST	PNEUMATIC
7-2836274-7	K	CRIMP TOOLING KIT	-

ATLANTIC VERSION TERMINATOR  
 INTERFACE ADAPTER



APPLICATOR DATA

CRIMP	SIZE	TYPE
WIRE	0.84 mm [.033]	F
INSUL	1.00 mm [.039]	O

APPLICATOR INSTRUCTIONS  
 408-35042

TERMINAL DATA: TE TERMINAL TE CRIMP SPECIFICATION

TERMINAL NAME: PICO MQS TERMINAL

WIRE STRIP LENGTH	INSULATION DIAMETER RANGE
1.70-1.90 mm [.067-.075 IN]	Ø0.95-1.05 mm [.037-.041 IN]

TERMINAL APPLICATION SPECIFICATION

TERMINALS APPLIED

TE TERMINAL	TE TERMINAL	TE TERMINAL	TE TERMINAL
2-2287720-1	2-2287720-3		

WIRE SIZE	CRIMP HEIGHT mm [INCH]	CRIMP HEIGHT REFERENCE SETTING
0.22mm <sup>2</sup>	0.52 +/- 0.02 [.020 +/- .001]	5.2
0.13mm <sup>2</sup>	0.46 +/- 0.02 [.018 +/- .001]	5.8

- 1 RECOMMENDED SPARE PARTS
- 2 REFER TO SUPPLIED INSTRUCTION SHEET FOR CLEANING, LUBRICATION AND STORAGE OF APPLICATOR.
- 3 APPLY PART NUMBER 2-23419-6 LOCTITE TO THREADS OF ITEM 242.
- 4 CRIMP HEIGHT REFERENCE SETTING WAS THE SETTING USED WHEN THE APPLICATOR WAS QUALIFIED AT THE FACTORY. ADJUSTMENT MAY BE NECESSARY WHEN RUNNING APPLICATOR IN THE FIELD.
- 5 TERMINAL PITCH NOT COMPATIBLE WITH MECHANICAL FEED.
- 6 THIS APPLICATOR DOES NOT CUT CARRIER STRIP.
- 7. UNLESS SPECIFIED OTHERWISE TORQUE VALUES SHALL BE USED PER DOCUMENT, 101-35000.

**\*WARNING**  
 ON INSTALLATION, SET WIRE DISC TO CRIMP HEIGHT REFERENCE SETTING FOR LARGEST WIRE SIZE. CRIMP HEIGHT REFERENCE SETTINGS GREATER THAN THE VALUE SHOWN MAY CAUSE DAMAGE TO THE CRIMP TOOLING, REFER TO THE INSTRUCTION SHEET FOR PROPER SETUP AND ADJUSTMENTS.

LOC	DIST	REVISIONS					
A	66	P	LTN	DESCRIPTION	DATE	OWN	APVD
		J		ECR-23-169382	15MAR2023	TB	TE
		J1		ECR-23-178181	12JUN2023	FZ	RK
		K		ECR-23-178662	15JUN2023	ROY	JAH
		L		ECR-24-219536	03SEP2024	SS	GB

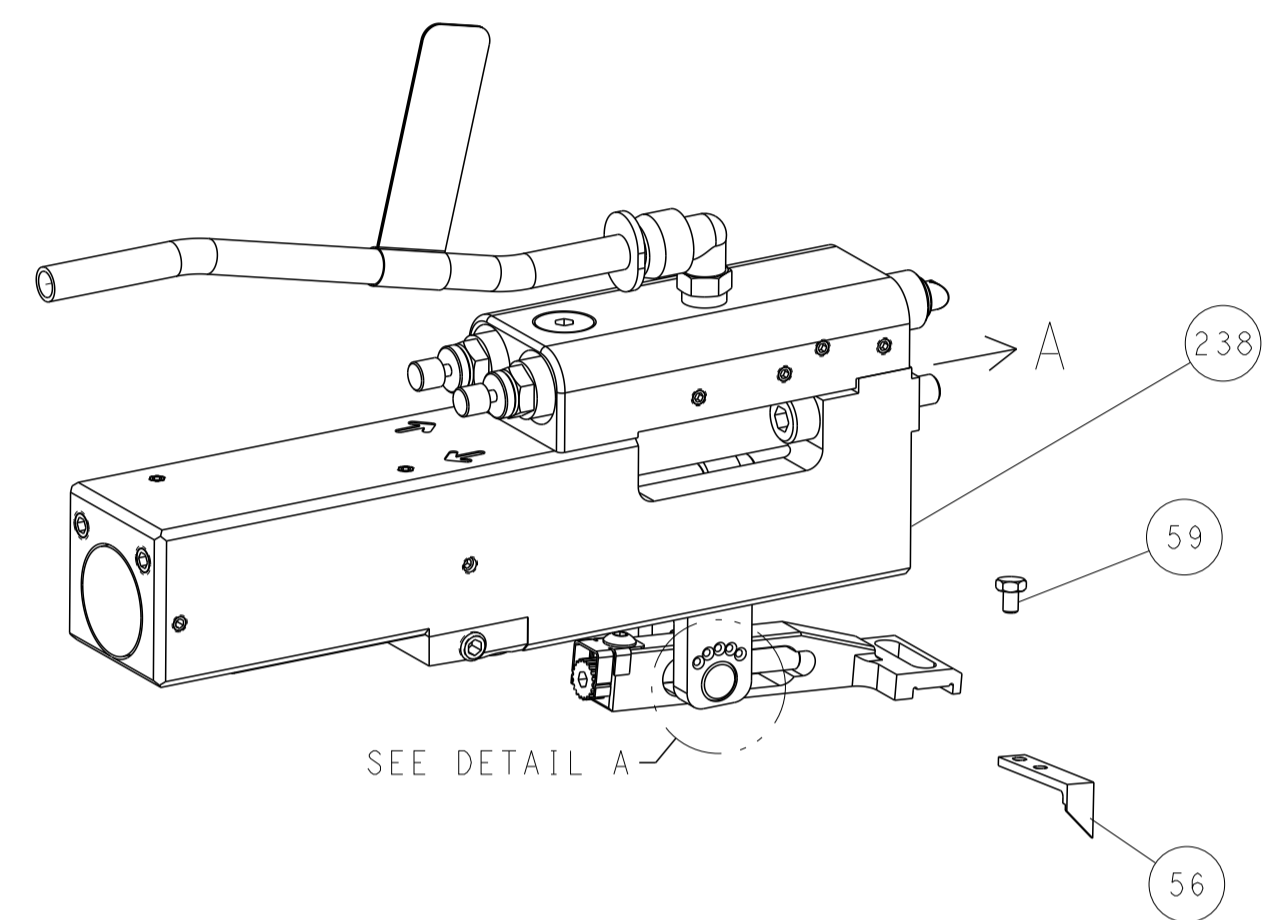
-	1	2079383-1	SCR, BHSC, RoHS (M3 X 8)	284
-	1	1633289-4	STABILIZER	283
-	1	1803461-1	HOLDER, STABILIZER	282
-	1	1-18028-3	WASHER, FLAT, REG M5	281
-	1	1803196-1	STUD, ADJUSTMENT SCREW	280
-	1	2119641-1	FEED CAM, AIR FEED	248
-	1	2119082-3	CAM, SNAIL, INSULATION ADJUSTMENT	244
-	1	2079764-1	WASHER, WAVE SPRING, CREST-TO-CREST	243
3	1	2119083-1	RETAINER, INSULATION DIAL	242
-	1	2844940-1	AIR FEED MODULE	238
-	1	455053-2	PLATE, RETAINING	180
-	1	4-21028-0	PIN, SLOTTED SPRING .094 X .750	177
-	2	22278-9	SPRING, COMPRESSION	176
-	1	1803129-1	PLATE, RETAINER	175
-	REF	994970-2	COUNTER, MAGNETIC	164
-	1	1-22281-6	SPRING, COMPRESSION	121
-	1	2844908-1	SCREW, LOCKING	99
-	1	2844907-1	POST, LOCKING	98
-	1	1803460-1	FRONT STRIP GUIDE	96
-	2	2168083-1	SCR, SKT HD CAP, RoHS, M3 X 8.0	95
-	1	2168083-7	SCR, SKT HD CAP, RoHS, M3 X 30	93
-	1	1803078-7	SPACER, PRECISION	82
-	1	1803607-3	DOCUMENTATION PACKAGE	71
-	1	2119740-1	TAG, IDENTIFICATION	67
-	2	2168078-1	SCREW, DRIVE, RH, RoHS, 2 x .188	66
-	2	2-18032-5	SCR, SET, FLT PNT, M5 X 20.0	61
-	1	2161425-1	SCREW, SHOULDER	60
-	1	5-18022-5	SCR, HEX HD CAP, M4 X 6.0	59
-	1	1803459-1	PAWL, FEED	56
-	4	2168083-3	SCR, SKT HD CAP, RoHS, M4 X 12.0	54
-	2	1-2168083-2	SCR, SKT HD CAP, RoHS, M4 X 25	53
-	1	18031-1	SCR, SET, CUP POINT M3 X 5.0	52
-	1	1803342-2	HOLDER, TERMINAL	51
-	1	1803202-1	CARRIER, HOLD DOWN	50
-	1	18023-9	SCR, SKT HD CAP M4 X 6.0	49
-	1	2-1803583-5	APPLICATOR BASIC ASSEMBLY, SF	46
-	1	1803515-4	RAM ASSEMBLY, SF ATLANTIC	44
-	1	1803602-1	SCR, BHSC, RoHS (M8 X 25)	41
-	1	2-1752356-4	SUPPORT, TERMINAL	34
-	2	2079383-4	SCR, BHSC, RoHS (M4 X 8)	33
-	1	1803397-2	PLATE, STRIP GUIDE	29
-	1	2-2119791-3	DEPRESSOR, WIRE	28
-	2	22281-7	SPRING, COMPRESSION	27
-	1	356835-1	LEVER, DRAG RELEASE	26
-	1	1803398-1	DRAG, TERMINAL	25
-	1	1803198-2	STRIP GUIDE	24
-	1	980371-4	SCR, SKT HD SHLDR 5.0 DIA X 6.0	23
-	1	2168083-2	SCR, SKT HD CAP, RoHS, M4 X 8.0	21
-	2	1-18028-2	WASHER, FLAT, REG M4	20
-	1	1803843-1	STRIPPER	19
-	1	3-22280-3	SPRING, COMPRESSION	12
-	1	1-2168083-0	SCR, SKT HD CAP, RoHS, M4 X 10	11
1	1	2119805-1	SHEAR HOLDER, FRONT	10
1	1	2-1803095-6	FLOATING SHEAR, FRONT	9
1	1	2-1803395-0	ANVIL, COMBINATION	8
-	-	-	-	7
-	-	-	-	6
-	1	2119757-2	DEPRESSOR, SHEAR	5
-	1	238011-7	BLOCK, CRIMPER SPACER	4
1	1	1-1803194-6	CRIMPER, INSULATION O	3
-	-	-	-	2
1	1	2844753-2	CRIMPER, WIRE PREMIUM	1
-77	-2	PART NO	DESCRIPTION	ITEM NO

DIMENSIONS: mm 		TOLERANCES UNLESS OTHERWISE SPECIFIED: 0 PLC ± 1 PLC ± 2 PLC ± 3 PLC ± 4 PLC ± ANGLES ± FINISH		DWN C. TOPPER 12APR2016 CHK G. BAILEY 12APR2016 APVD M. CLIFFORD 12APR2016 PRODUCT SPEC APPLICATION SPEC WEIGHT SCALE 1:2 SHEET 1 OF 4 REV L		NAME Ocean Side Feed Applicator SIZE CAGE CODE DRAWING NO A1 00779 C=2836274		RESTRICTED TO Customer Accessible Production Drawing	
-----------------------	--	---	--	--	--	---	--	---	--

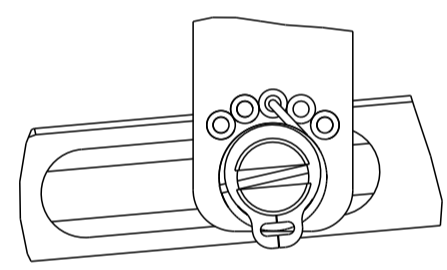
LOC	DIST	REVISIONS					
A	66	P	LTN	DESCRIPTION	DATE	OWN	APVD
		-		SEE SHEET 1	-	-	-

# FEED TYPE

## PNEUMATIC

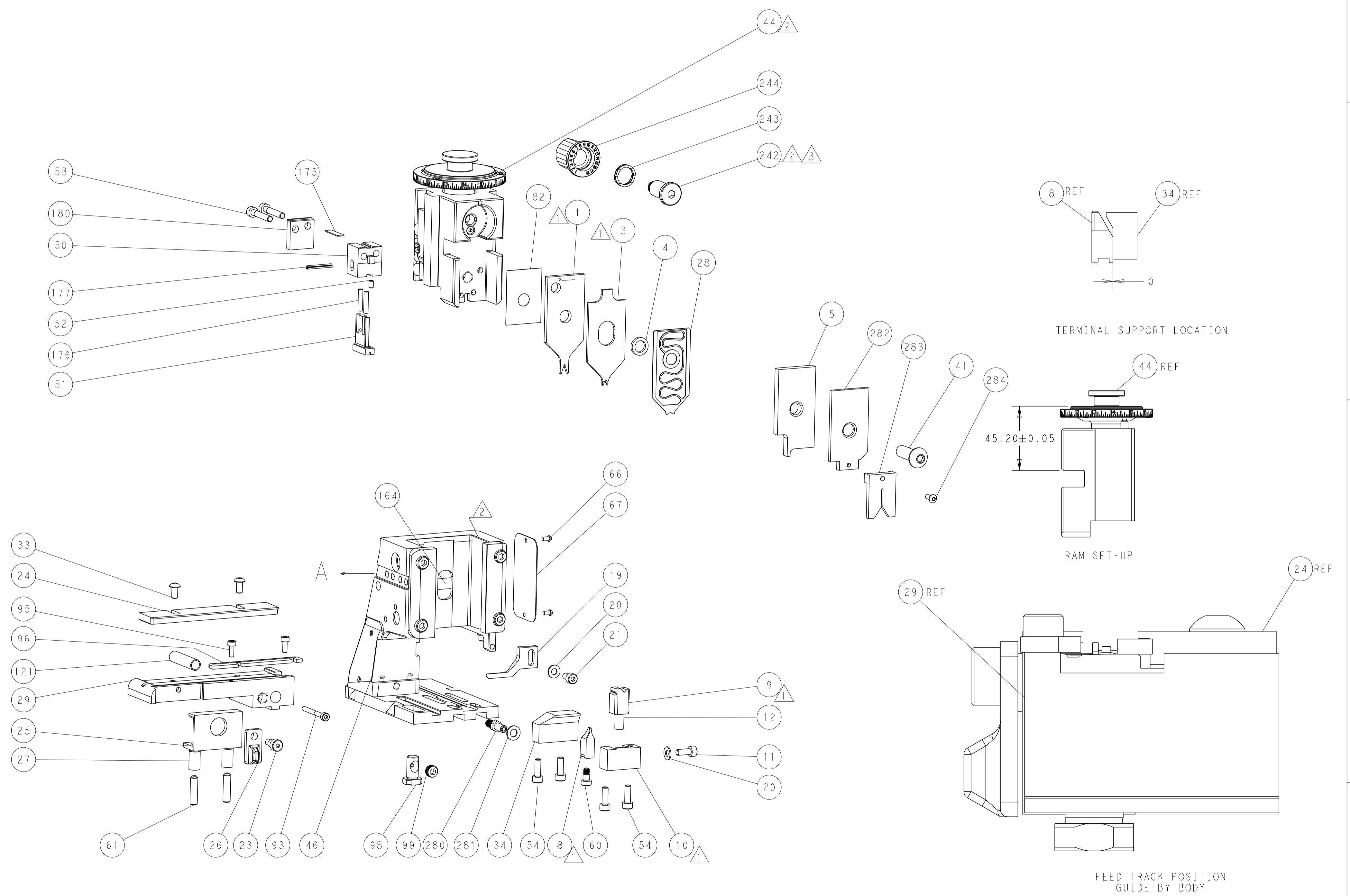
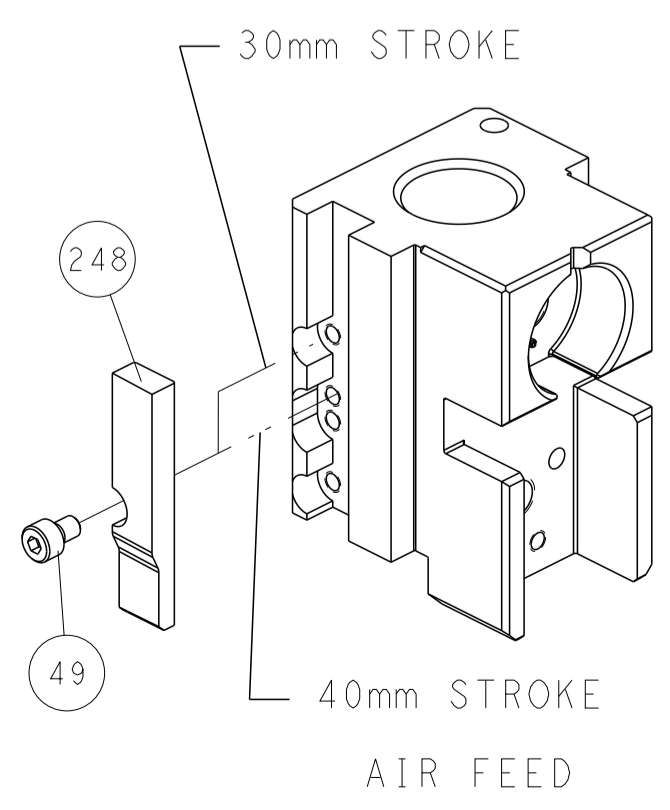


## FEED SPRING SETTING POSITION (SHOWN FROM REAR SIDE)



DETAIL A

## CAM POSITION



DIMENSIONS: mm 		TOLERANCES UNLESS OTHERWISE SPECIFIED: 0 PLC ± 1 PLC ± 2 PLC ± 3 PLC ± 4 PLC ± ANGLES ± FINISH		DWN C. TOPPER 12APR2016 CHK G. BAILEY 12APR2016 APVD M. CLIFFORD 12APR2016		NAME Ocean Side Feed Applicator	
MATERIAL:		WEIGHT:		SIZE: A1 CAGE CODE: 00779 DRAWING NO: C=2836274		RESTRICTED TO:	
Customer Accessible Production Drawing				SCALE: 1:2		SHEET 2 OF 4 REV L	