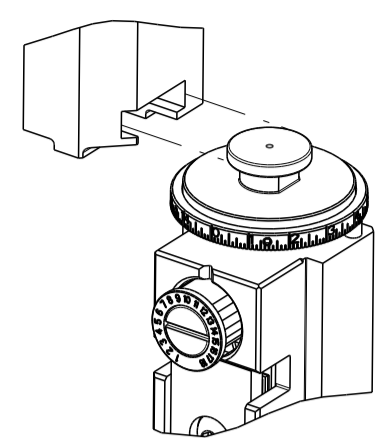


PART NUMBER	REVISION	DESCRIPTION	FEED TYPE
2836298-2	B	FINE CRIMP HEIGHT ADJUST	PNEUMATIC
7-2836298-2	B	PNEUMATIC AND CRIMP TOOLING KIT	PNEUMATIC
7-2836298-7	A	CRIMP TOOLING KIT	-

ATLANTIC VERSION TERMINATOR INTERFACE ADAPTER

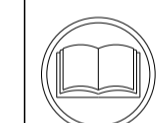


APPLICATOR DATA		
CRIMP	SIZE	TYPE
WIRE	3.85 mm [.152]	F
INSUL	6.85 mm [.270]	O

APPLICATOR INSTRUCTIONS 408-35042

TERMINAL DATA: FCI TERMINAL		FCI CRIMP SPECIFICATION	
TERMINAL NAME: 9.5-DCSI FEMALE TERMINAL			
WIRE STRIP LENGTH		INSULATION DIAMETER RANGE	
7.50-8.50 mm [.295-.335 IN]		Ø4.00-5.20 mm [1.57-.205 IN]	
TERMINAL APPLICATION SPECIFICATION	9 084 05 00 Rev F		
TERMINALS APPLIED			
TE TERMINAL	FCI TERMINAL	TE SEAL	FCI SEAL
2113608-1	60070161	1572474-1	60993301
2113608-2	60070162		
2113608-3	60070261		
2113608-4	60070262		

WIRE SIZE	CRIMP HEIGHT mm [INCH]	CRIMP HEIGHT REFERENCE SETTING
6.00mm2	2.80 +/- 0.05 [1.10 +/- .002]	8.0
5.00mm2	2.70 +/- 0.05 [1.06 +/- .002]	9.4



- RECOMMENDED SPARE PARTS
- REFER TO SUPPLIED INSTRUCTION SHEET FOR CLEANING, LUBRICATION AND STORAGE OF APPLICATOR.
- APPLY PART NUMBER 2-23419-6 LOCTITE TO THREADS OF ITEM 242.
- CRIMP HEIGHT REFERENCE SETTING WAS THE SETTING USED WHEN THE APPLICATOR WAS QUALIFIED AT THE FACTORY. ADJUSTMENT MAY BE NECESSARY WHEN RUNNING APPLICATOR IN THE FIELD.
- TERMINAL LUBRICANT IS RECOMMENDED.
- 6. UNLESS SPECIFIED OTHERWISE TORQUE VALUES SHALL BE USED PER DOCUMENT, 101-35000.
- THIS APPLICATOR APPLIES TERMINAL WITH A SEAL.
- APPLY TORO-SEAL IN ALLEN SOCKET TO FILL HOLE AFTER FLAT HD HAS BEEN ADJUSTED TO CORRECT HEIGHT AT QUALIFICATION. APPLY #1-23419-5 LOC-TITE TO THREADS.
- TERMINAL LUBRICANT IS RECOMMENDED.

***WARNING**
ON INSTALLATION, SET WIRE DISC TO CRIMP HEIGHT REFERENCE SETTING FOR LARGEST WIRE SIZE. CRIMP HEIGHT REFERENCE SETTINGS GREATER THAN THE VALUE SHOWN MAY CAUSE DAMAGE TO THE CRIMP TOOLING. REFER TO THE INSTRUCTION SHEET FOR PROPER SETUP AND ADJUSTMENTS.

ATLANTIC VERSION
Shown on sheets 1 of 4 & 2 of 4
(Pacific version shown on sheets 3 of 4 & 4 of 4)

LOC	DIST	REVISIONS					
		P	LTN	DESCRIPTION	DATE	OWN	APVD
A	66	1		PRELIMINARY	04MAY2016	MEH	TE
		A		RELEASED	23JUN2016	MEH	TE
		B		ECR-23-174952	11MAY2023	JWC	TE

-	2	2	2168083-1	SCR, SKT HD CAP, RoHS, M3 X 8.0	269	
-	1	1	1633782-3	FENCE	267	
-	1	1	1803078-2	SPACER, PRECISION	259	
-	1	1	2119641-1	FEED CAM, AIR FEED	248	
-	1	1	2119082-4	CAM, SNAIL, INSULATION ADJUSTMENT	244	
-	1	1	2079764-1	WASHER, WAVE SPRING, CREST-TO-CREST	243	
	1	1	2119083-1	RETAINER, INSULATION DIAL	242	
-	1	1	7-18023-7	SCR, SKT HD CAP M3 X 4.0	241	
-	1	1	2844940-2	AIR FEED MODULE	238	
-	REF	REF	994970-2	COUNTER, MAGNETIC	164	
	1	1	2119955-1	ASSY, LUBRICATOR, SIDE FEED	113	
-	1	1	2844908-1	SCREW, LOCKING	99	
-	1	1	2844907-1	POST, LOCKING	98	
-	1	1	1-690438-0	FRONT STRIP GUIDE	96	
-	1	1	455888-8	SPACER, CRIMPER	82	
-	2	2	2079383-4	SCR, BHSC, RoHS (M4 X 8)	79	
-	1	1	1803096-1	EXTENSION PLATE	78	
-	1	1	1803607-3	DOCUMENTATION PACKAGE	71	
-	1	1	2119791-6	DEPRESSOR, WIRE	70	
-	1	1	2119943-1	WASHER, SPACER	69	
-	1	1	2119740-1	TAG, IDENTIFICATION	67	
-	2	2	2168078-1	SCREW, DRIVE, RH, RoHS, 2 x .188	66	
-	1	1	2168083-2	SCR, SKT HD CAP, RoHS, M4 X 8.0	60	
-	1	1	5-18022-5	SCR, HEX HD CAP, M4 X 6.0	59	
-	1	1	1-2168083-3	SCR, SKT HD CAP, RoHS, M3 X 16	57	
-	1	1	1338683-8	FEED PAWL	56	
-	4	4	2168083-3	SCR, SKT HD CAP, RoHS, M4 X 12.0	54	
-	2	2	1-2168083-0	SCR, SKT HD CAP, RoHS, M4 X 10	53	
-	1	1	5018030-1	NUT, HEX, REG, RoHS, M3	52	
-	1	1	811242-5	BUMPER, HOLD DOWN	51	
-	1	1	690753-2	SPACER, TONKER	50	
-	1	1	18023-9	SCR, SKT HD CAP M4 X 6.0	49	
-	1	1	1-1803583-7	APPLICATOR BASIC ASSEMBLY, SF	46	
-	1	1	1803515-2	RAM ASSEMBLY, SF ATLANTIC	44	
-	1	1	1803602-2	SCR, BHSC, RoHS (M8 X 40)	41	
-	1	1	3-1752356-3	SUPPORT, TERMINAL	34	
-	2	2	2079383-5	SCR, BHSC, RoHS (M4 X 20)	33	
-	2	2	2-2844962-3	SPACER, CYLINDRICAL, STRIP GUIDE	30	
-	1	1	2844992-5	ASSEMBLY, STRIP GUIDE	29	
-	1	1	2-455888-0	SPACER, CRIMPER	28	
-	2	2	22283-1	SPRING, COMPRESSION	27	
-	1	1	240792-1	DRAG, TERMINAL	25	
-	1	1	1320928-2	STRIP GUIDE	24	
-	1	1	2168083-2	SCR, SKT HD CAP, RoHS, M4 X 8.0	21	
-	2	2	1-18028-2	WASHER, FLAT, REG M4	20	
-	1	1	2119533-1	STRIPPER, SIDE FEED	19	
	1	1	2119806-1	INSERT, SHEAR	13	
-	1	1	3-22280-3	SPRING, COMPRESSION	12	
-	1	1	1-356885-3	STOP, SHEAR	11	
	1	1	2119805-7	SHEAR HOLDER, FRONT	10	
	1	1	318059-9	FLOATING SHEAR, FRONT	9	
	1	2	1	6-1633930-3	ANVIL, COMBINATION	8
-	-	-	-	-	7	
-	-	-	-	-	6	
-	1	1	1803080-1	DEPRESSOR, SHEAR	5	
-	1	1	2-238011-1	BLOCK, CRIMPER SPACER	4	
	1	2	1	5-2119784-3	CRIMPER, INSULATION O PREMIUM	3
-	1	1	1-455888-6	SPACER, CRIMPER	2	
	1	2	1	5-1803241-6	CRIMPER, WIRE F	1

DIMENSIONS:		TOLERANCES UNLESS OTHERWISE SPECIFIED:		MATERIAL:		FINISH:		WEIGHT:		SCALE:		SHEET:		REV:	
mm	0 PLC ±	1 PLC ±	2 PLC ±	3 PLC ±	4 PLC ±	ANGLES	FINISH			A	00779	1	4	B	



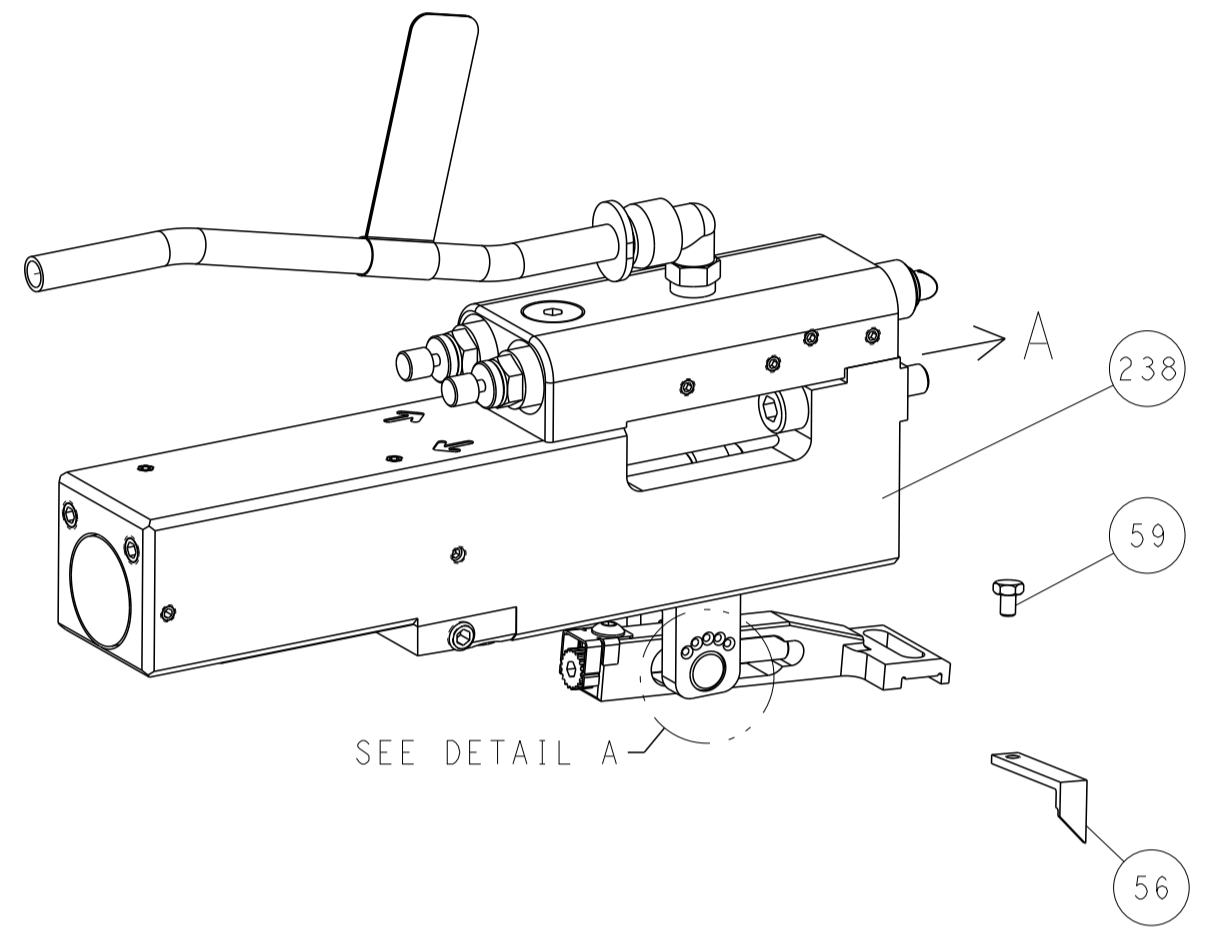
Ocean Side Feed Applicator

Customer Accessible Production Drawing

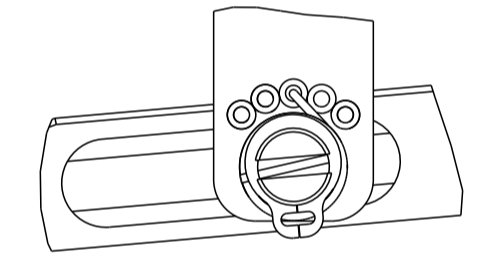
LOC	DIST	REVISIONS					
A	66	P	LTN	DESCRIPTION	DATE	OWN	APVD
		-		SEE SHEET 1	-	-	-

FEED TYPE

PNEUMATIC

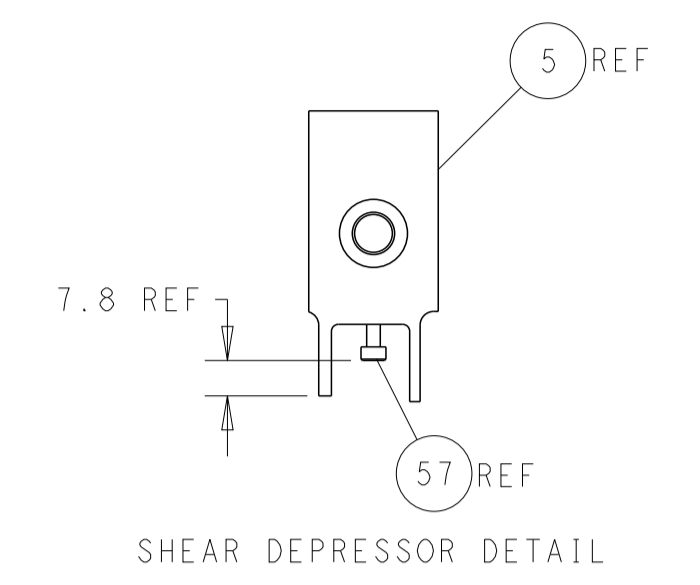
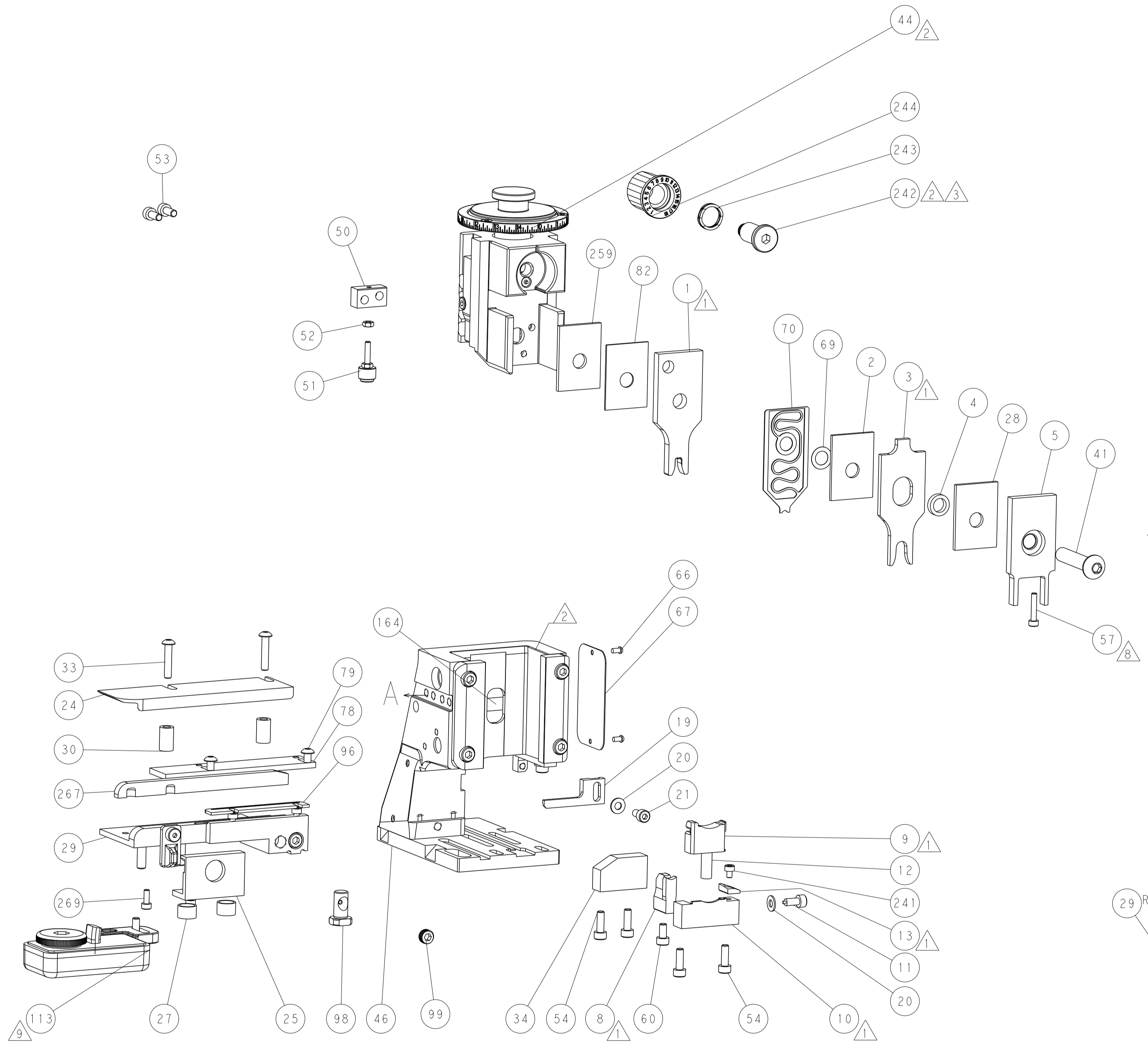
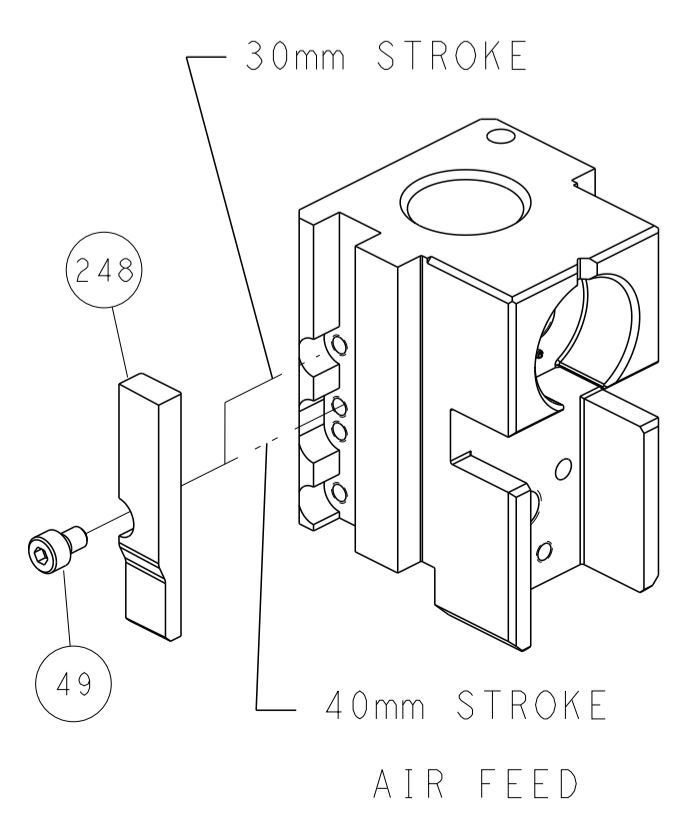


FEED SPRING SETTING POSITION
(SHOWN FROM REAR SIDE)

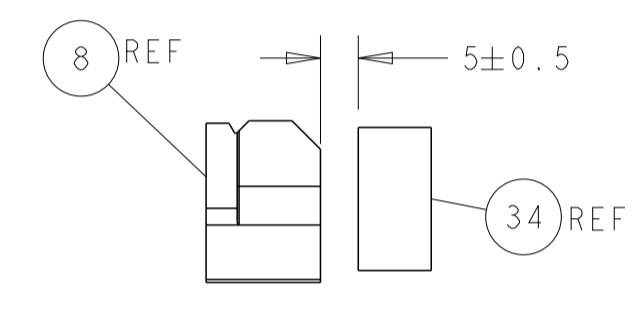


DETAIL A

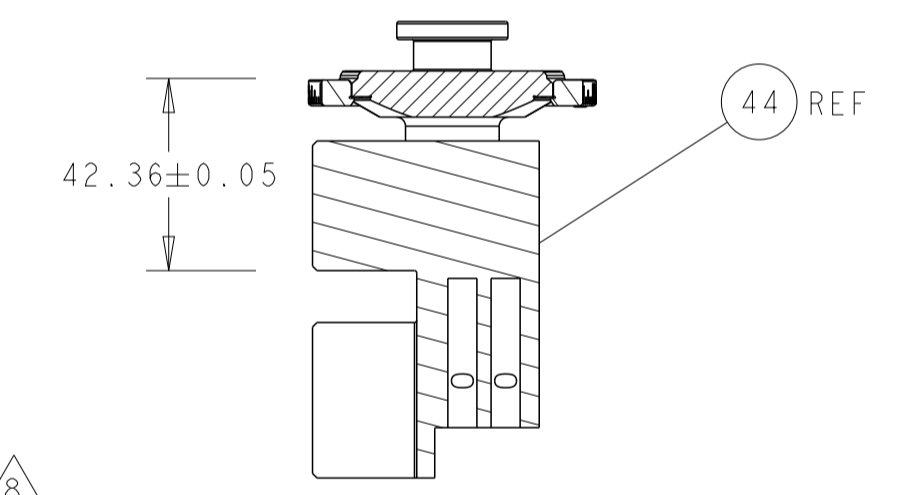
CAM POSITION



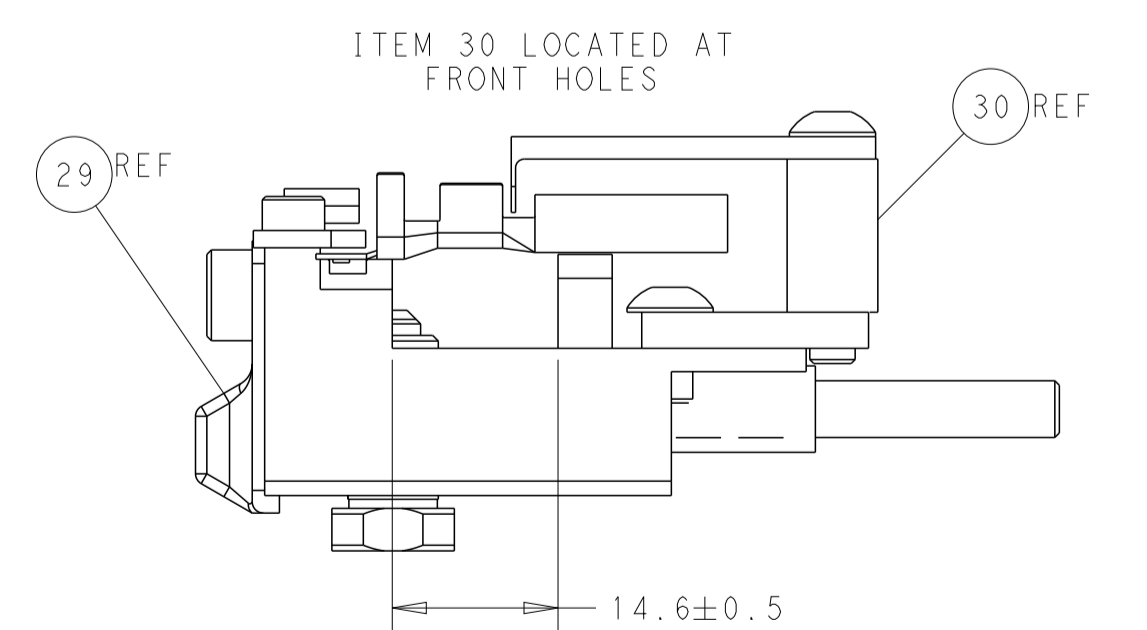
SHEAR DEPRESSOR DETAIL



TERMINAL SUPPORT LOCATION



RAM SET-UP



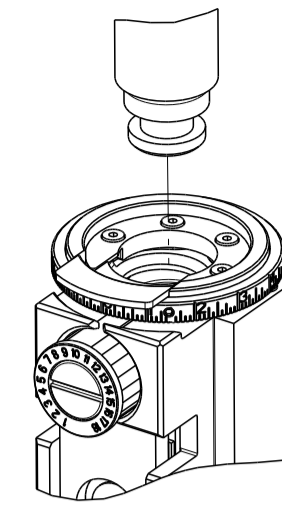
FEED TRACK POSITION GUIDE BY WIRE BARREL

ATLANTIC VERSION
 Shown on sheets 1 of 4 & 2 of 4
 (Pacific version shown on sheets 3 of 4 & 4 of 4)

<small>THIS DRAWING IS UNPUBLISHED. RELEASED FOR PUBLICATION 2016. IT IS THE PROPERTY OF TYCO ELECTRONICS CORPORATION AND IS TO BE USED ONLY FOR THE PURPOSES AND IN THE MANNER SPECIFIED BY THE DRAWING. IT IS THE USER'S RESPONSIBILITY TO OBTAIN THE LATEST REVISIONS.</small>		DWN: M_HERR 04MAY2016 CHK: T_ELBIN 04MAY2016 APVD: T_ELBIN 04MAY2016	TE Connectivity Harrisburg, PA 17105-3608
DIMENSIONS: mm TOLERANCES UNLESS OTHERWISE SPECIFIED: 0 PLC ± 1 PLC ± 2 PLC ± 3 PLC ± 4 PLC ± ANGLES ± MATERIAL: - FINISH: -		NAME: Ocean Side Feed Applicator SIZE: A1 CAGE CODE: 00779 DRAWING NO: 2836298 WEIGHT: - SCALE: 1:2	RESTRICTED TO: - SHEET 2 OF 4 REV B
Customer Accessible Production Drawing			

PART NUMBER	REVISION	DESCRIPTION	FEED TYPE
2-2836298-2	B	FINE CRIMP HEIGHT ADJUST	PNEUMATIC
7-2836298-7	A	CRIMP TOOLING KIT	-

PACIFIC VERSION TERMINATOR
INTERFACE ADAPTER



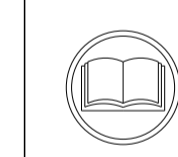
APPLICATOR DATA		
CRIMP	SIZE	TYPE
WIRE	3.85 mm [1.52]	F
INSUL	6.85 mm [2.70]	O
APPLICATOR INSTRUCTIONS 408-35042		

TERMINAL DATA: FCI TERMINAL FCI CRIMP SPECIFICATION

TERMINAL NAME: 9.5-DCSI FEMALE TERMINAL	INSULATION DIAMETER RANGE
WIRE STRIP LENGTH 7.50-8.50 mm [2.95-.335 IN]	Ø4.00-5.20 mm [1.57-.205 IN]
TERMINAL APPLICATION SPECIFICATION 9 084 05 00 Rev F	

TE TERMINAL	FCI TERMINAL	TE SEAL	FCI SEAL
2113608-1	60070161	1572474-1	60993301
2113608-2	60070162		
2113608-3	60070261		
2113608-4	60070262		

WIRE SIZE	CRIMP HEIGHT mm [INCH]	CRIMP HEIGHT REFERENCE SETTING
6.00mm2	2.80+/-0.05 [1.10+/-0.002]	8.0
5.00mm2	2.70+/-0.05 [1.06+/-0.002]	9.4



- 1 RECOMMENDED SPARE PARTS
- 2 REFER TO SUPPLIED INSTRUCTION SHEET FOR CLEANING, LUBRICATION AND STORAGE OF APPLICATOR.
- 3 APPLY PART NUMBER 2-23419-6 LOCTITE TO THREADS OF ITEM 242.
- 4 CRIMP HEIGHT REFERENCE SETTING WAS THE SETTING USED WHEN THE APPLICATOR WAS QUALIFIED AT THE FACTORY. ADJUSTMENT MAY BE NECESSARY WHEN RUNNING APPLICATOR IN THE FIELD.
- 5 TERMINAL LUBRICANT IS RECOMMENDED.
- 6. UNLESS SPECIFIED OTHERWISE TORQUE VALUES SHALL BE USED PER DOCUMENT, 101-35000.
- 7 THIS APPLICATOR APPLIES TERMINAL WITH A SEAL.
- 8 APPLY TORQ-SEAL IN ALLEN SOCKET TO FILL HOLE AFTER FLAT HD HAS BEEN ADJUSTED TO CORRECT HEIGHT AT QUALIFICATION. APPLY #1-23419-5 LOC-TITE TO THREADS.
- 9 TERMINAL LUBRICANT IS RECOMMENDED.

***WARNING**
ON INSTALLATION, SET WIRE DISC TO CRIMP HEIGHT REFERENCE SETTING FOR LARGEST WIRE SIZE. CRIMP HEIGHT REFERENCE SETTINGS GREATER THAN THE VALUE SHOWN MAY CAUSE DAMAGE TO THE CRIMP TOOLING. REFER TO THE INSTRUCTION SHEET FOR PROPER SETUP AND ADJUSTMENTS.

PACIFIC VERSION
Shown on sheets 3 of 4 & 4 of 4
(Atlantic version shown on sheets 1 of 4 & 2 of 4)

LOC	DIST	REV	DATE	BY	APPV
A	66	-	-	-	-

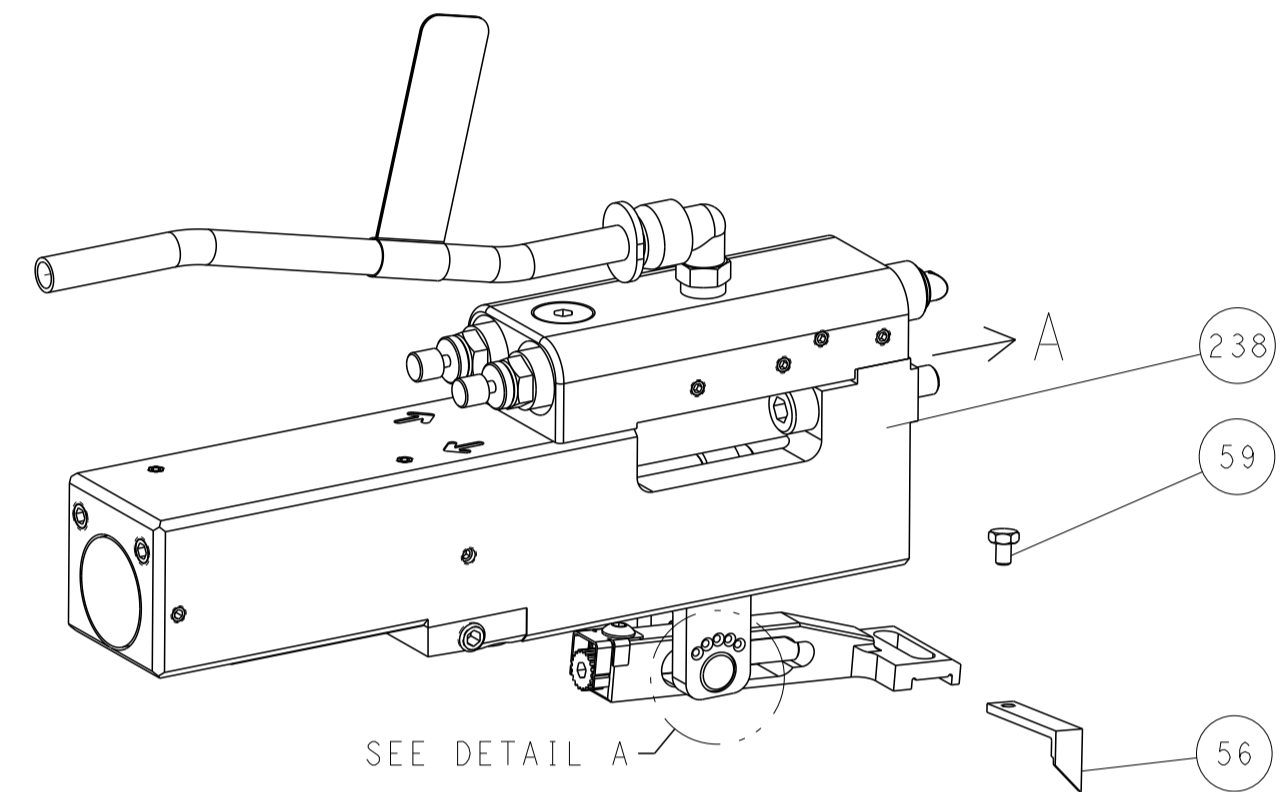
LOC	DIST	REV	DATE	BY	APPV
-	2	2168083-1		SCR, SKT HD CAP, RoHS, M3 X 8.0	269
-	1	1633782-3		FENCE	267
-	1	1803078-2		SPACER, PRECISION	259
-	1	2119082-4		CAM, SNAIL, INSULATION ADJUSTMENT	244
-	1	2079764-1		WASHER, WAVE SPRING, CREST-TO-CREST	243
3	-	2119083-1		RETAINER, INSULATION DIAL	242
-	1	7-18023-7		SCR, SKT HD CAP M3 X 4.0	241
-	1	2844940-2		AIR FEED MODULE	238
-	REF	994970-2		COUNTER, MAGNETIC	164
-	1	2119641-2		FEED CAM, AIR FEED	151
-	1	2168083-8		SCR, SKT HD CAP, RoHS, M4 X 16	144
-	4	2168083-9		SCR, SKT HD CAP, RoHS, M4 X 20	143
-	1	1-1803583-8		APPLICATOR BASIC ASSEMBLY, SF	141
-	1	1803516-2		RAM ASSEMBLY, SF PACIFIC	140
9	-	2119955-1		ASSY, LUBRICATOR, SIDE FEED	113
-	1	2844908-1		SCREW, LOCKING	99
-	1	2844907-1		POST, LOCKING	98
-	1	1-690438-0		FRONT STRIP GUIDE	96
-	1	455888-8		SPACER, CRIMPER	82
-	2	2079383-4		SCR, BHSC, RoHS (M4 X 8)	79
-	1	1803096-1		EXTENSION PLATE	78
-	1	1803607-3		DOCUMENTATION PACKAGE	71
-	1	2119791-6		DEPRESSOR, WIRE	70
-	1	2119943-1		WASHER, SPACER	69
-	1	2119740-1		TAG, IDENTIFICATION	67
-	2	2168078-1		SCREW, DRIVE, RH, RoHS, 2 x .188	66
-	1	5-18022-5		SCR, HEX HD CAP, M4 X 6.0	59
-	1	1-2168083-3		SCR, SKT HD CAP, RoHS, M3 X 16	57
-	1	1338683-8		FEED PAWL	56
-	2	1-2168083-0		SCR, SKT HD CAP, RoHS, M4 X 10	53
-	1	5018030-1		NUT, HEX, REG, RoHS, M3	52
-	1	811242-5		BUMPER, HOLD DOWN	51
-	1	690753-2		SPACER, TONKER	50
-	1	18023-9		SCR, SKT HD CAP M4 X 6.0	49
-	1	1803602-2		SCR, BHSC, RoHS (M8 X 40)	41
-	1	3-1752356-3		SUPPORT, TERMINAL	34
-	2	2079383-5		SCR, BHSC, RoHS (M4 X 20)	33
-	2	2-2844962-3		SPACER, CYLINDRICAL, STRIP GUIDE	30
-	1	2844992-5		ASSEMBLY, STRIP GUIDE	29
-	1	2-455888-0		SPACER, CRIMPER	28
-	2	22283-1		SPRING, COMPRESSION	27
-	1	240792-1		DRAG, TERMINAL	25
-	1	1320928-2		STRIP GUIDE	24
-	1	2168083-2		SCR, SKT HD CAP, RoHS, M4 X 8.0	21
-	2	1-18028-2		WASHER, FLAT, REG M4	20
-	1	2119533-1		STRIPPER, SIDE FEED	19
1	-	2119806-1		INSERT, SHEAR	13
-	1	3-22280-3		SPRING, COMPRESSION	12
-	1	1-356885-3		STOP, SHEAR	11
-	1	2119805-7		SHEAR HOLDER, FRONT	10
-	1	318059-9		FLOATING SHEAR, FRONT	9
1	1	6-1633930-3		ANVIL, COMBINATION	8
-	-	-		-	7
-	-	-		-	6
-	1	1803080-1		DEPRESSOR, SHEAR	5
-	1	2-238011-1		BLOCK, CRIMPER SPACER	4
1	1	5-2119784-3		CRIMPER, INSULATION O PREMIUM	3
-	1	1-455888-6		SPACER, CRIMPER	2
1	1	5-1803241-6		CRIMPER, WIRE F	1

DIMENSIONS:		TOLERANCES UNLESS OTHERWISE SPECIFIED:	
mm	0 PLC	±	
	1 PLC	±	
	2 PLC	±	
	3 PLC	±	
	4 PLC	±	
	ANGLES		
	FINISH		

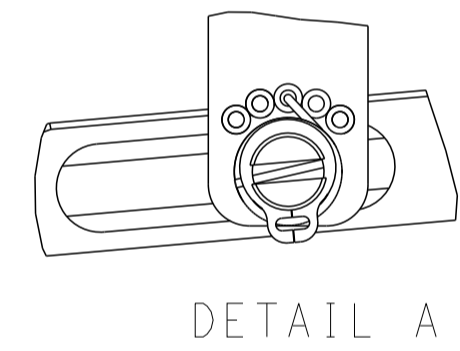
OWN: M. HERR 04MAY2016	NAME: Ocean Side Feed Applicator
CHK: T. ELBIN 04MAY2016	SIZE: A
APVD: T. ELBIN 04MAY2016	CAGE CODE: 00779
PRODUCT SPEC	DRAWING NO: 2836298
APPLICATION SPEC	SCALE: 1:2
WEIGHT	SHEET: 3 OF 4
	REV: B

LOC	DIST	REVISIONS					
A	66	P	LTN	DESCRIPTION	DATE	OWN	APVD
		-		SEE SHEET 1	-	-	-

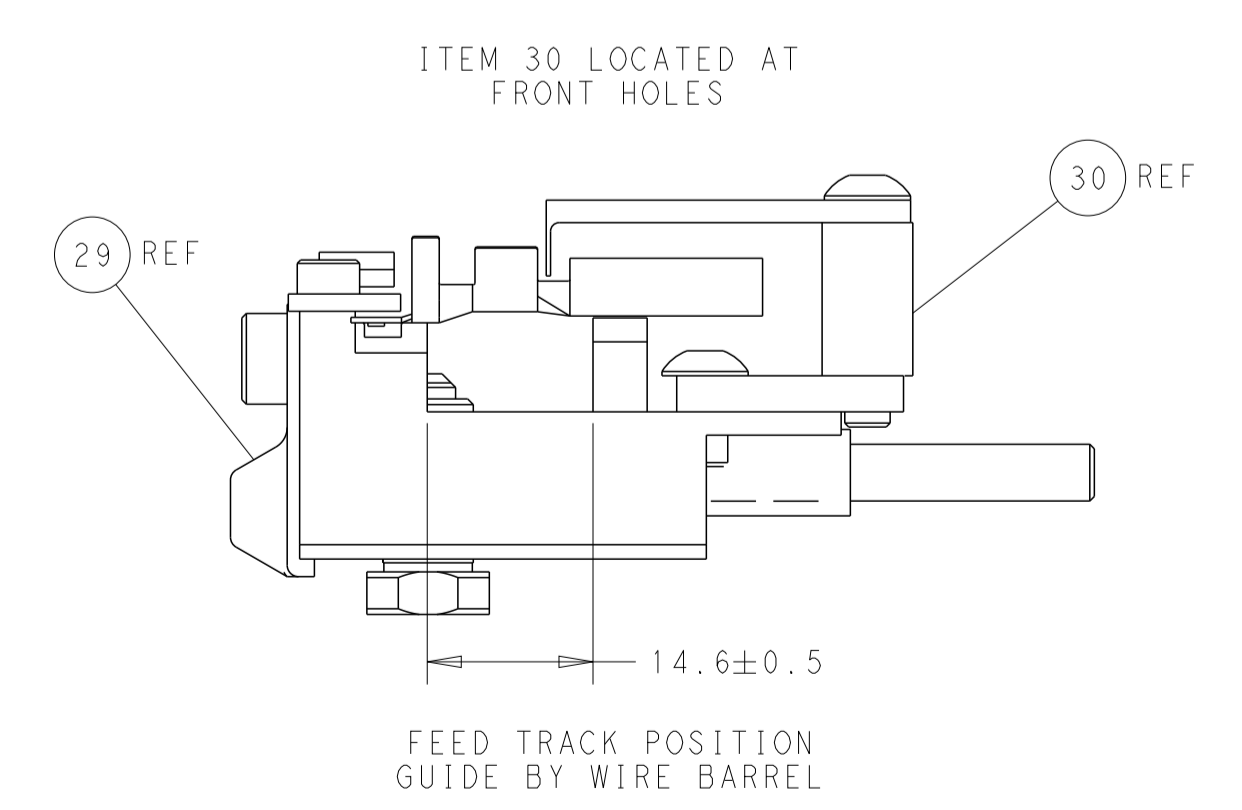
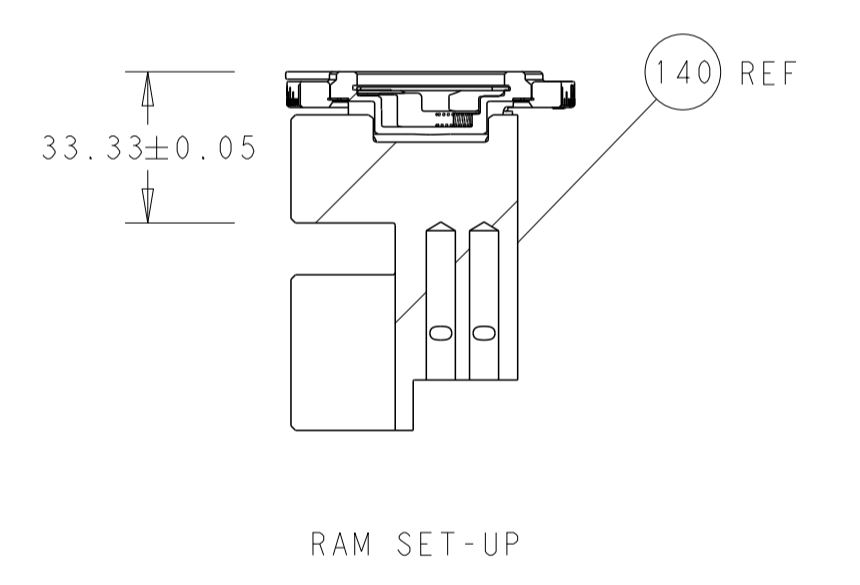
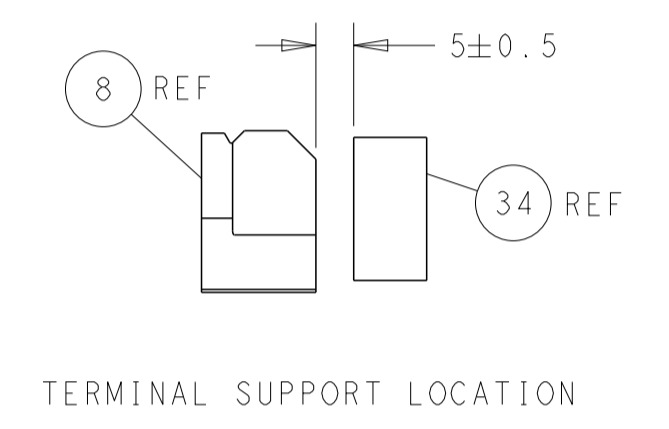
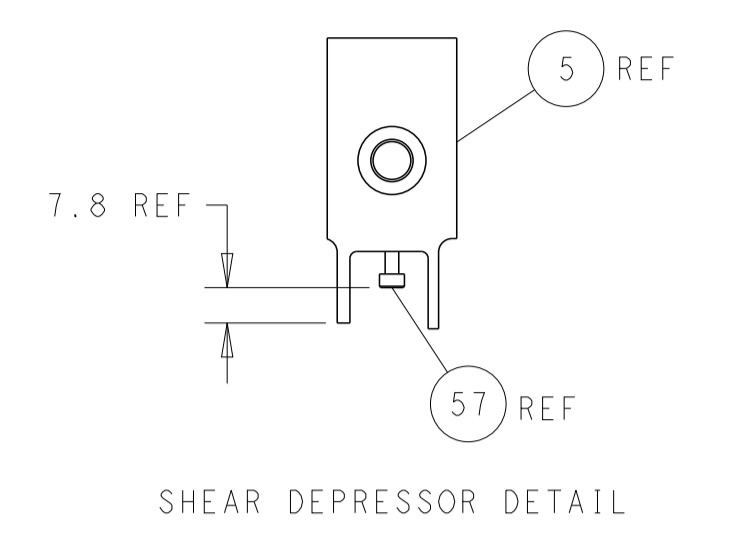
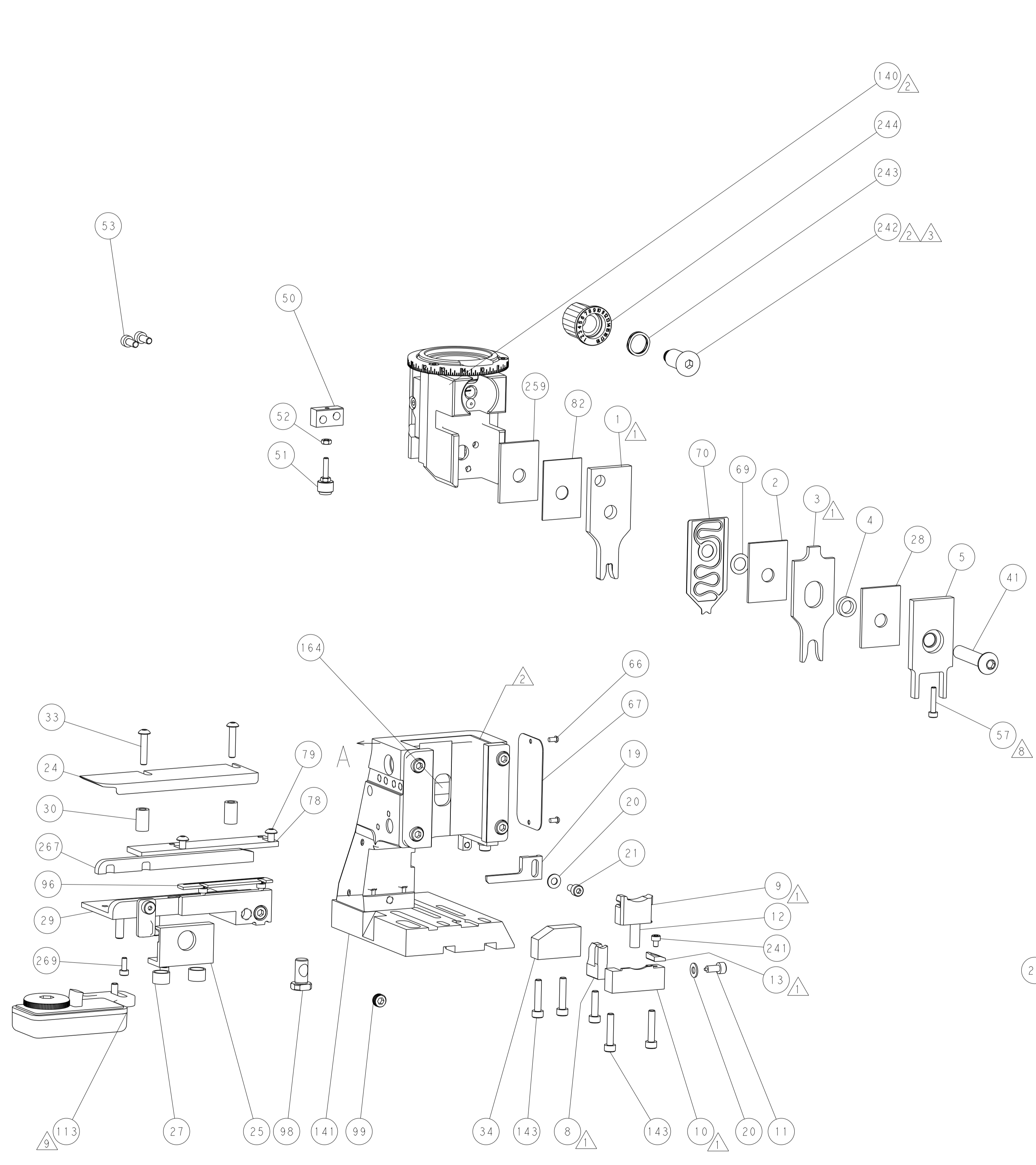
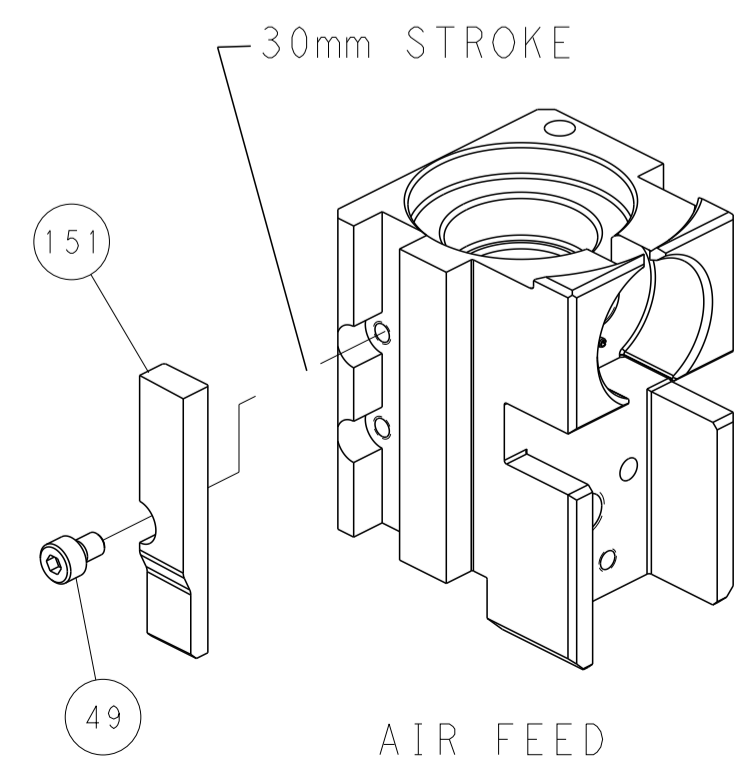
FEED TYPE PNEUMATIC



FEED SPRING SETTING POSITION (SHOWN FROM REAR SIDE)



CAM POSITION



PACIFIC VERSION
 Shown on sheets 3 of 4 & 4 of 4
 (Atlantic version shown on sheets 1 of 4 & 2 of 4)

<small>THIS DRAWING IS UNPUBLISHED. RELEASED FOR PUBLICATION 2016. ALL RIGHTS RESERVED. THIS DRAWING IS CONTROLLED DOCUMENT. THE INFORMATION CONTAINED HEREIN IS UNCLASSIFIED EXCEPT WHERE SHOWN OTHERWISE. THIS INFORMATION IS UNCLASSIFIED EXCEPT WHERE SHOWN OTHERWISE.</small>		DWN: M_HERR 04MAY2016 CHK: T_ELBIN 04MAY2016 APVD: T_ELBIN 04MAY2016	TE Connectivity Harrisburg, PA 17105-3608
DIMENSIONS: mm TOLERANCES UNLESS OTHERWISE SPECIFIED: 0 PLC ± 1 PLC ± 2 PLC ± 3 PLC ± 4 PLC ± ANGLES ± MATERIAL: - FINISH: -		NAME: Ocean Side Feed Applicator SIZE: A1 CAGE CODE: 00779 DRAWING NO: 2836298	RESTRICTED TO: - SCALE: 1:2 SHEET: 4 OF 4 REV: B
CUSTOMER ACCESSIBLE PRODUCTION DRAWING		SHEETS 1 & 2 ARE NOT REQUIRED FOR PACIFIC VERSION	