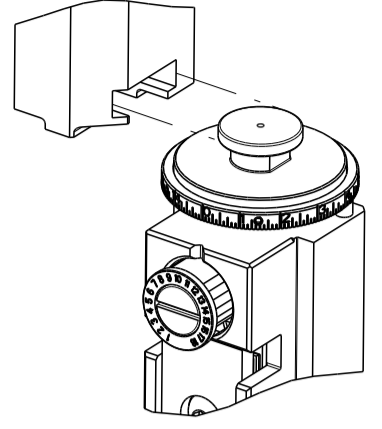


PART NUMBER	REVISION	DESCRIPTION	FEED TYPE
2836525-2	G	FINE CRIMP HEIGHT ADJUST	PNEUMATIC
7-2836525-7	E	CRIMP TOOLING KIT	-

ATLANTIC VERSION TERMINATOR  
 INTERFACE ADAPTER



APPLICATOR DATA		
CRIMP	SIZE	TYPE
WIRE 1	2.79 mm [.110]	0
WIRE 2	2.92 mm [.115]	0
INSUL	6.86 mm [.270]	0

APPLICATOR INSTRUCTIONS  
 408-35042

TERMINAL DATA: TE TERMINAL		TE CRIMP SPECIFICATION	
TERMINAL NAME: OUTER FERRULE, 180 DEGREE, SEALED, FAKRA			
WIRE STRIP LENGTH		TERMINAL INSULATION DIAMETER RANGE	$\varnothing 2.20-3.00$ mm [.087-.118 IN]
TERMINAL APPLICATION SPECIFICATION	114-32145		

TERMINALS APPLIED				SEAL INSULATION DIAMETER RANGE
TE TERMINAL	TE TERMINAL	TE SEAL	TE SEAL	
2272633-2			963244-1	2.2-3.0

WIRE SIZE	CRIMP HEIGHT mm [INCH]	CRIMP HEIGHT REFERENCE SETTING
DACAR-462		4.6
RG-174		4.6
RG-174 LL		4.6
RG-316		5.1

- 1 RECOMMENDED SPARE PARTS
- 2 REFER TO SUPPLIED INSTRUCTION SHEET FOR CLEANING, LUBRICATION AND STORAGE OF APPLICATOR.
- 3 APPLY PART NUMBER 2-23419-6 LOCTITE TO THREADS OF ITEM 242.
- 4 CRIMP HEIGHT REFERENCE SETTING WAS THE SETTING USED WHEN THE APPLICATOR WAS QUALIFIED AT THE FACTORY. ADJUSTMENT MAY BE NECESSARY WHEN RUNNING APPLICATOR IN THE FIELD.
- 5 TERMINAL PITCH NOT COMPATIBLE WITH MECHANICAL FEED.
- 6 UNLESS SPECIFIED OTHERWISE TORQUE VALUES SHALL BE USED PER DOCUMENT, 101-35000.
- 7 APPLY TORQ-SEAL IN ALLEN SOCKET TO FILL HOLE AFTER FLAT HD HAS BEEN ADJUSTED TO CORRECT HEIGHT AT QUALIFICATION.
- 8 ITEM 1 WIRE CRIMP WIDTH 2.79mm [.110 IN].
- 9 ITEM 178 WIRE CRIMP WIDTH 2.92mm [.115 IN].
- 10 SEE APPLICATION SPECIFICATION 114-32145 FOR RECOMMENDED STRIP LENGTH DIMENSIONS.
- 11 MUST FEED OFF OF SLOT.
- 12 SEE APPLICATION SPECIFICATION, 114-32145 FOR SOLDER DIAMETER TO VERIFY BRAID CRIMP HEIGHT.
- 13 DIMENSION BETWEEN MALE AND FEMALE PRODUCT DIFFERENT:  
 TCPN 2203264-2 & 2203264-7 (MALE):  
 ITEM 34 - TERMINAL, SUPPORT - 5.45±0,1MM  
 TCPN 2203274-7 (FEMALE):  
 ITEM 34 - TERMINAL, SUPPORT - 6.65±0,1MM

\*WARNING  
 ON INSTALLATION, SET WIRE DISC TO CRIMP HEIGHT REFERENCE SETTING FOR LARGEST WIRE SIZE. CRIMP HEIGHT REFERENCE SETTINGS GREATER THAN THE VALUE SHOWN MAY CAUSE DAMAGE TO THE CRIMP TOOLING. REFER TO THE INSTRUCTION SHEET FOR PROPER SETUP AND ADJUSTMENTS.

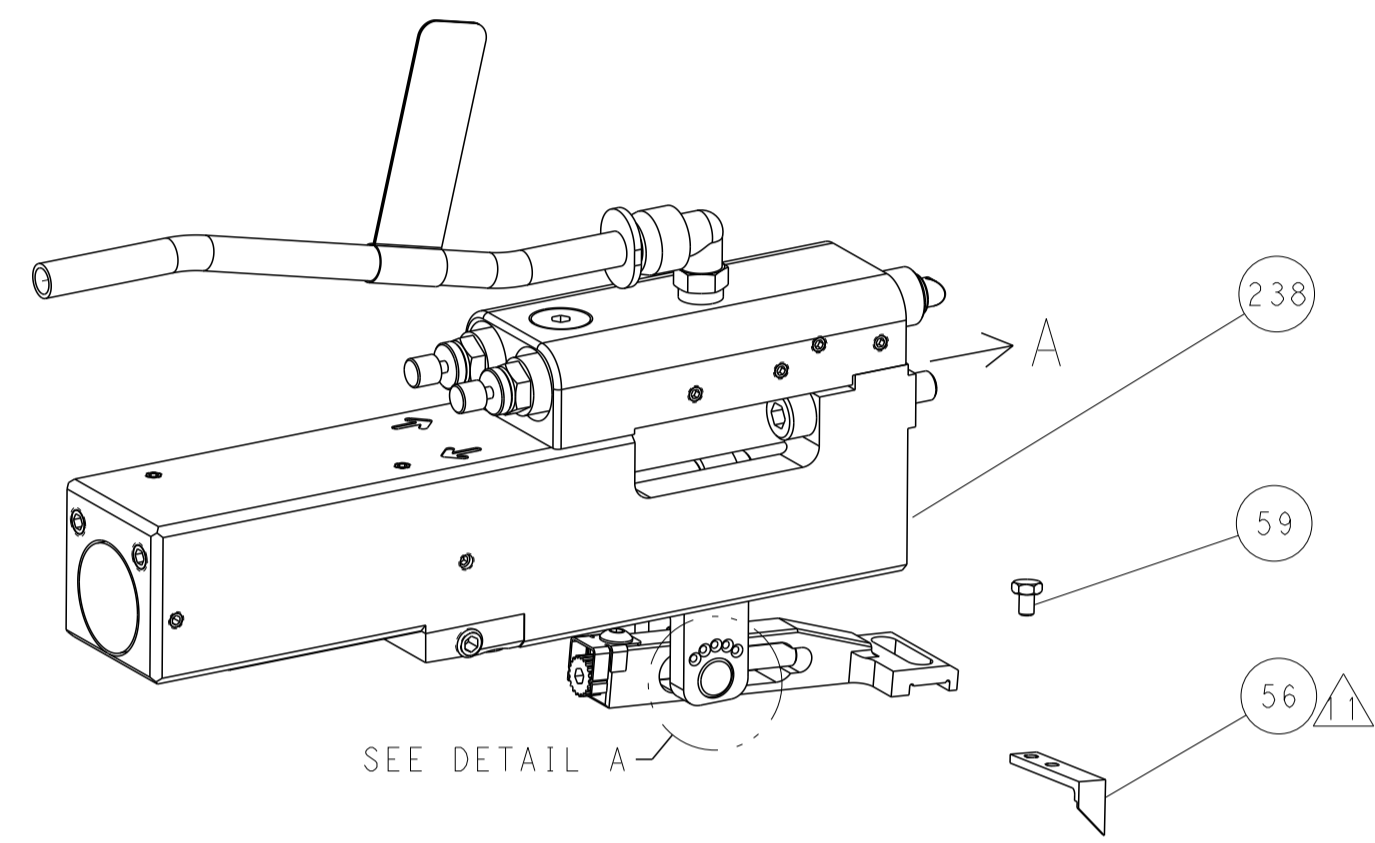
LOC	DIST	REVISIONS					
		P	LTN	DESCRIPTION	DATE	DWN	APVD
A	66	E		ECR-19-007764	15MAY2019	JAH	GB
		F		ECR-20-010071	16JUL2020	JAH	GB
		F1		ECR-21-114558	21SEP2021	JWC	TE
		G		ECR-24-219520	03SEP2024	LS	MP

-	1	6-1803945-3	TONKER -	300	
-	1	22278-9	SPRING, COMPRESSION	299	
-	2	4-18032-3	SCR, SET, FLT PNT, M3 X 6.0	298	
-	1	1803944-1	SPACER, TONKER	297	
-	2	2168083-1	SCR, SKT HD CAP, RoHS, M3 X 8.0	269	
-	1	1633782-6	FENCE	267	
-	1	1-455888-8	SPACER, CRIMPER -	261	
-	1	1803078-2	SPACER, PRECISION	259	
-	1	2119641-1	FEED CAM, AIR FEED	248	
-	1	2119082-3	CAM, SNAIL, INSULATION ADJUSTMENT	244	
-	1	2079764-1	WASHER, WAVE SPRING, CREST-TO-CREST	243	
-	1	2119083-1	RETAINER, INSULATION DIAL	242	
-	1	7-18023-7	SCR, SKT HD CAP M3 X 4.0	241	
-	1	2844940-1	AIR FEED MODULE	238	
-	1	1-1633723-9	CRIMPER, WIRE O -	178	
-	REF	994970-2	COUNTER, MAGNETIC	164	
-	1	2844908-1	SCREW, LOCKING	99	
-	1	2844907-1	POST, LOCKING	98	
-	1	1-690438-0	FRONT STRIP GUIDE	96	
-	1	318563-1	GUARD, FRONT CHIP	89	
-	1	1-455888-0	SPACER, CRIMPER -	82	
-	1	1803607-1	DOCUMENTATION PACKAGE	71	
-	1	2119791-3	DEPRESSOR, WIRE	70	
-	1	2119943-1	WASHER, SPACER	69	
-	1	2119740-1	TAG, IDENTIFICATION	67	
-	2	2168078-1	SCREW, DRIVE, RH, RoHS, 2 x .188	66	
-	1	2168083-2	SCR, SKT HD CAP, RoHS, M4 X 8.0	60	
-	1	5-18022-5	SCR, HEX HD CAP, M4 X 6.0	59	
-	1	5018030-1	NUT, HEX, REG, RoHS, M3	58	
-	1	1-2168083-3	SCR, SKT HD CAP, RoHS, M3 X 16	57	
-	1	1338685-4	PAWL, FEED	56	
-	4	2168083-3	SCR, SKT HD CAP, RoHS, M4 X 12.0	54	
-	2	2168083-8	SCR, SKT HD CAP, RoHS, M4 X 16	53	
-	1	18023-9	SCR, SKT HD CAP M4 X 6.0	49	
-	1	2-1803583-6	APPLICATOR BASIC ASSEMBLY, SF	46	
-	1	1803515-2	RAM ASSEMBLY, SF ATLANTIC	44	
-	1	1803602-2	SCR, BHSC, RoHS (M8 X 40)	41	
-	1	2487541-2	TERMINAL SUPPORT, ADJUSTABLE	34	
-	2	2079383-5	SCR, BHSC, RoHS (M4 X 20)	33	
-	2	3-2844962-5	SPACER, CYLINDRICAL, STRIP GUIDE	30	
-	1	2844992-5	ASSEMBLY, STRIP GUIDE -	29	
-	1	1-455888-0	SPACER, CRIMPER -	28	
-	2	22283-1	SPRING, COMPRESSION	27	
-	1	240792-1	DRAG, TERMINAL	25	
-	1	1320928-2	STRIP GUIDE -	24	
-	1	2119806-1	INSERT, SHEAR	13	
-	1	3-22280-3	SPRING, COMPRESSION	12	
-	1	1-356885-3	STOP, SHEAR	11	
-	1	2-2119805-3	SHEAR HOLDER, FRONT -	10	
-	1	1803808-1	FLOATING SHEAR, FRONT SPECIAL	9	
-	1	1803452-2	ANVIL	8	
-	1	2-240641-4	SPACER	7	
-	-	-	-	6	
-	1	1-1803080-2	DEPRESSOR, SHEAR	5	
-	1	2-238011-1	BLOCK, CRIMPER SPACER	4	
-	1	9-2119784-9	CRIMPER, INSULATION O PREMIUM	3	
-	1	455888-2	SPACER, CRIMPER -	2	
-	1	1-1633723-7	CRIMPER, WIRE O -	1	
-	77	-2	PART NO	DESCRIPTION	ITEM NO

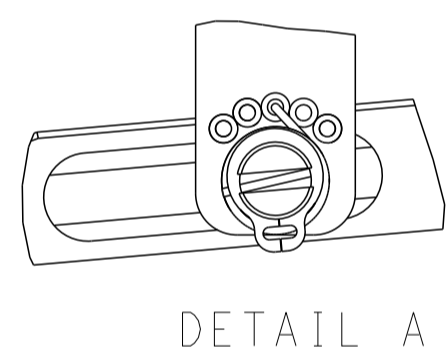
DIMENSIONS: mm 		TOLERANCES UNLESS OTHERWISE SPECIFIED: 0 PLC ± 1 PLC ± 2 PLC ± 3 PLC ± 4 PLC ± ANGLES ± FINISH		DWN: HERR 04NOV2016 CHK: T. ELBIN 04NOV2016 APVD: T. ELBIN 04NOV2016 NAME: Ocean Side Feed Applicator SIZE: A1 CAGE CODE: 00779 DRAWING NO: 2836525 RESTRICTED TO: R	
MATERIAL: -		WEIGHT: -		Customer Accessible Production Drawing	
SCALE: 1:2		SHEET 1 OF 4		REV G	

LOC	DIST	REVISIONS					
A	66	P	LTN	DESCRIPTION	DATE	OWN	APVD
		-		SEE SHEET 1	-	-	-

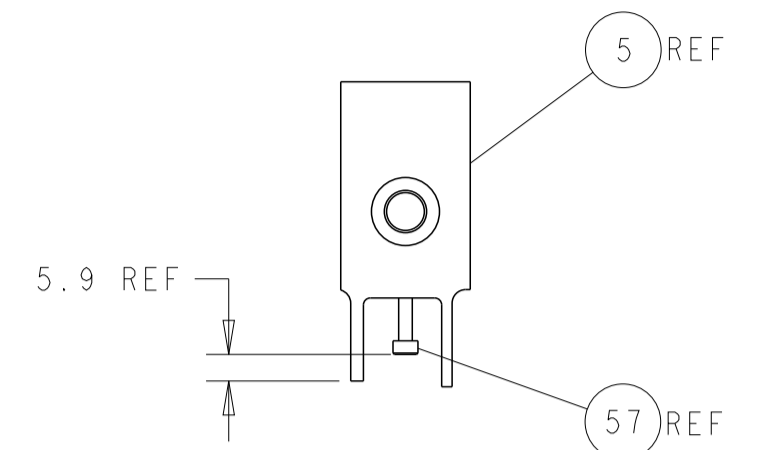
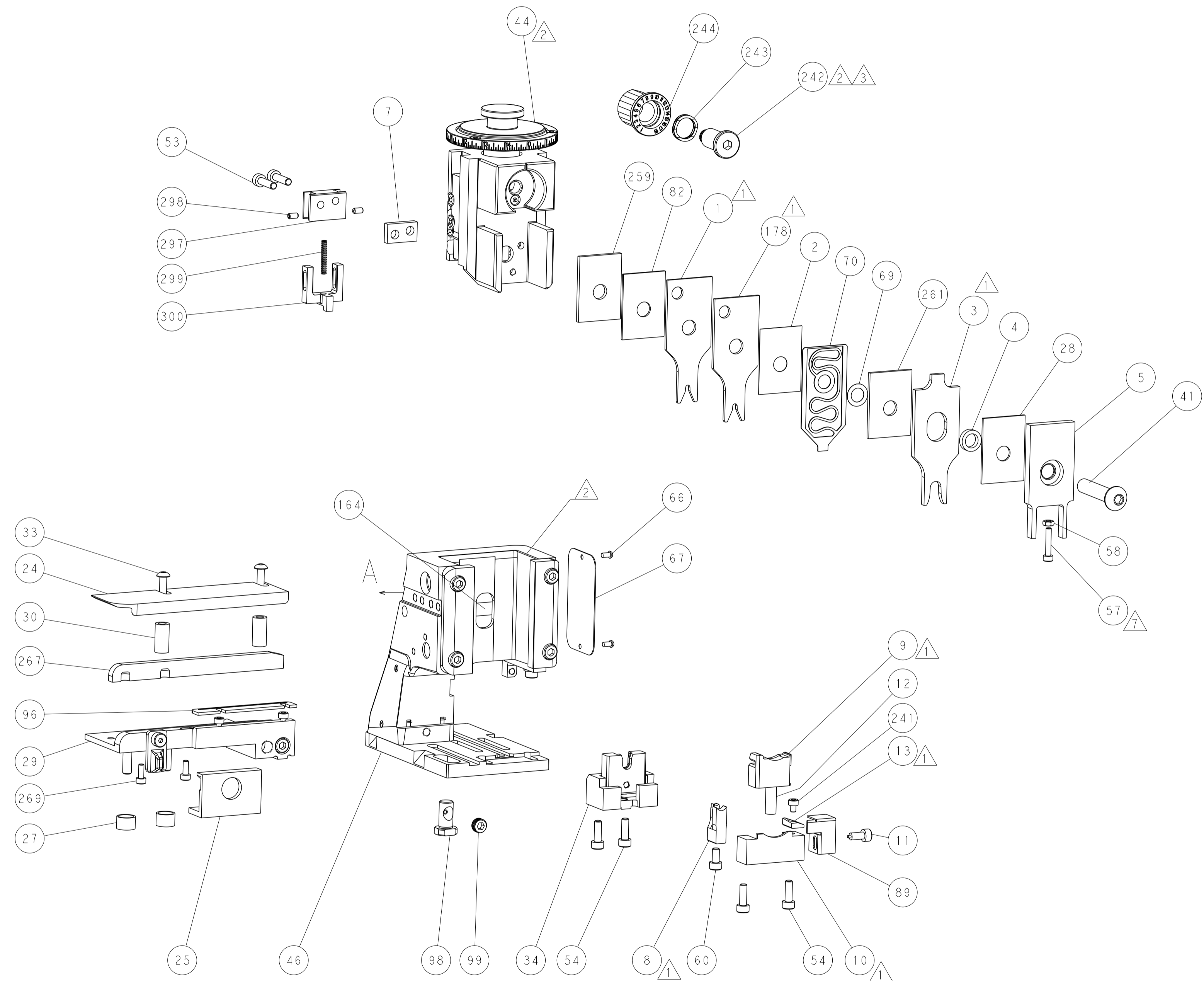
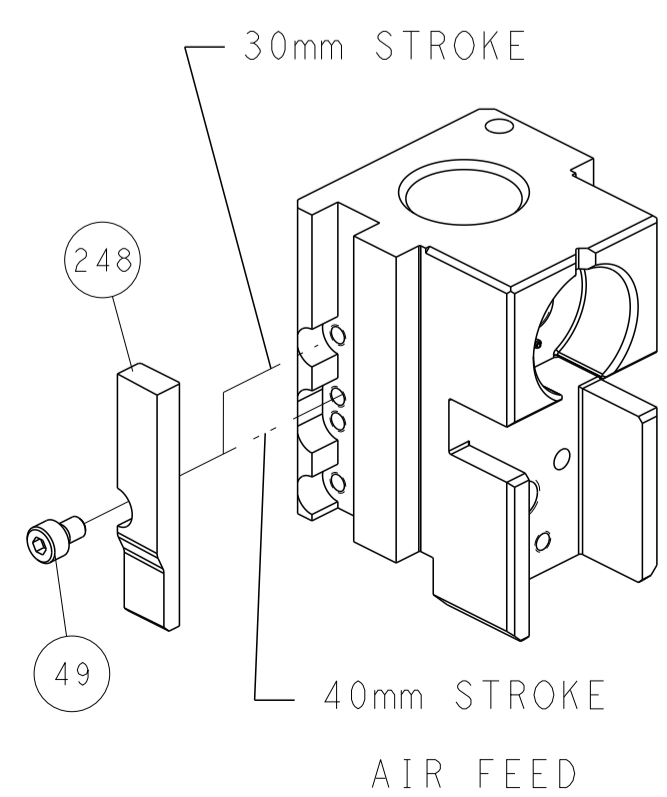
# FEED TYPE PNEUMATIC



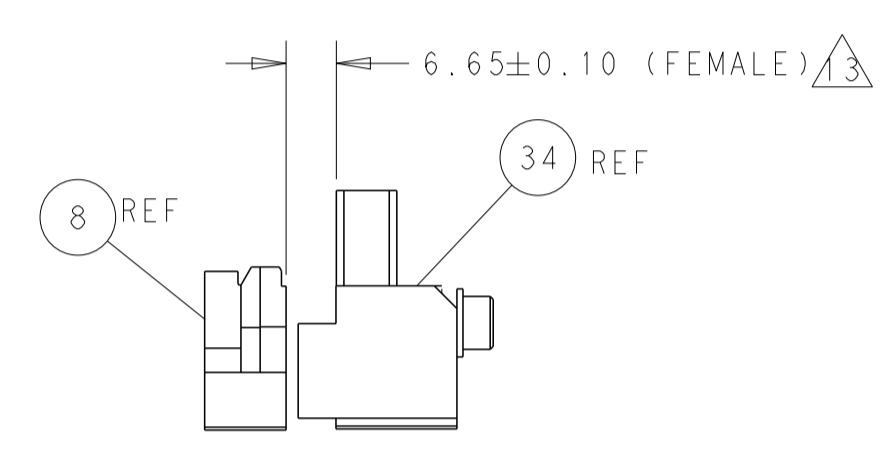
## FEED SPRING SETTING POSITION (SHOWN FROM REAR SIDE)



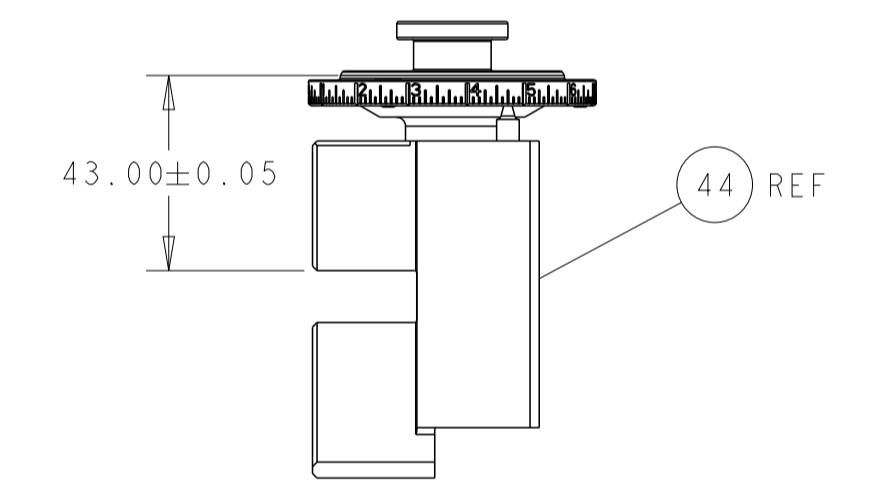
## CAM POSITION



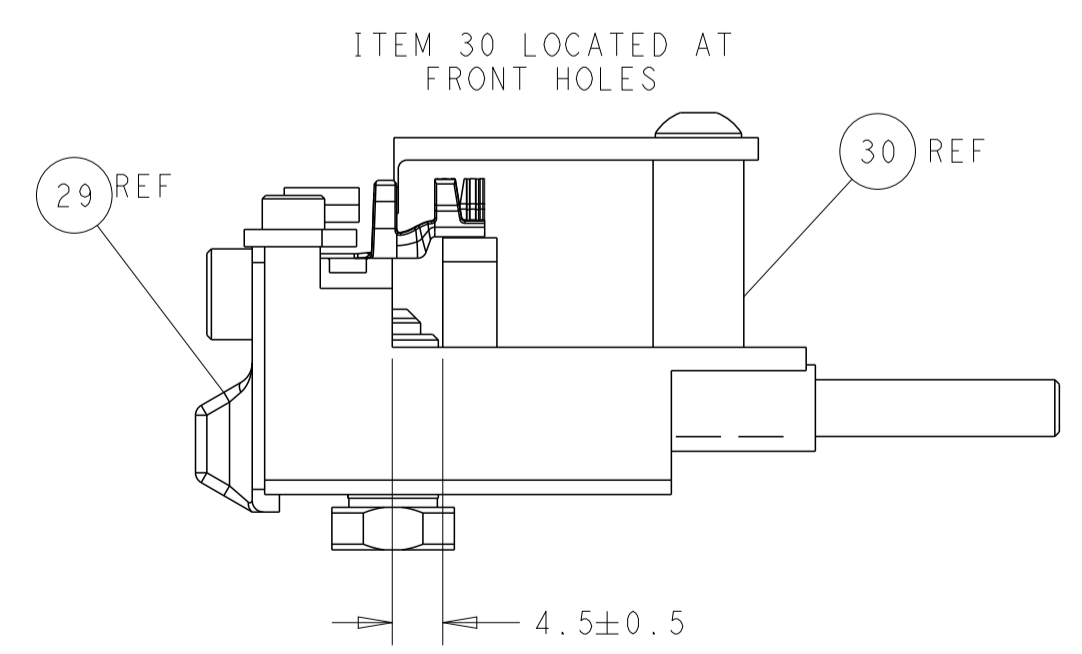
SHEAR DEPRESSOR DETAIL



TERMINAL SUPPORT LOCATION



RAM SET-UP



FEED TRACK POSITION GUIDE BY INSULATION BARREL

<small>THIS DRAWING IS UNPUBLISHED. RELEASED FOR PUBLICATION 2016 BY TYCO ELECTRONICS CORPORATION. ALL RIGHTS RESERVED.</small>		DWN: M. HERR 04NOV2016 CHK: T. ELBIN 04NOV2016 APVD: T. ELBIN 04NOV2016	TE Connectivity Harrisburg, PA 17105-3608
DIMENSIONS: mm TOLERANCES UNLESS OTHERWISE SPECIFIED: 0 PLC ± 1 PLC ± 2 PLC ± 3 PLC ± 4 PLC ± ANGLES ± FINISH		NAME: Ocean Side Feed Applicator PRODUCT SPEC: APPLICATION SPEC: SIZE: A1 CAGE CODE: 00779 DRAWING NO: 2836525	RESTRICTED TO:
MATERIAL:		WEIGHT:	SCALE: 1:2 SHEET: 2 OF 4 REV: G