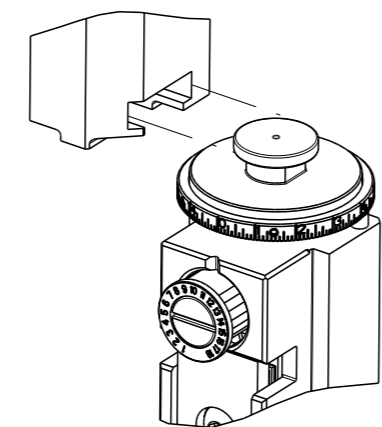


PART NUMBER	REVISION	DESCRIPTION	FEED TYPE
2836791-2	E	FINE CRIMP HEIGHT ADJUST	PNEUMATIC
7-2836791-2	E	PNEUMATIC AND CRIMP TOOLING KIT	PNEUMATIC
7-2836791-7	A	CRIMP TOOLING KIT	-

ATLANTIC VERSION TERMINATOR INTERFACE ADAPTER

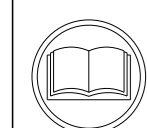


APPLICATOR DATA		
CRIMP	SIZE	TYPE
WIRE	0.97 mm [.038]	F
INSUL	0.90 mm [.035]	F

APPLICATOR INSTRUCTIONS 408-35042

TERMINAL DATA: JST TERMINAL		JST UK CRIMP SPECIFICATION	
TERMINAL NAME: ZH CONNECTOR			
WIRE STRIP LENGTH 1.40-2.16 mm [.055-.085 IN]		INSULATION DIAMETER RANGE Ø0.50-0.90 mm [.020-.035 IN]	
TERMINAL APPLICATION SPECIFICATION H4009/017-00 Rev 29-01-01			
TERMINALS APPLIED			
TE TERMINAL	JST TERMINAL	TE TERMINAL	JST TERMINAL
2113165-1	SZH-003T-P0.5		

WIRE SIZE	CRIMP HEIGHT mm [INCH]	CRIMP HEIGHT REFERENCE SETTING
28 AWG	0.52 +/- 0.05 [.020 +/- .002]	5.8
30 AWG	0.47 +/- 0.05 [.019 +/- .002]	6.3
32 AWG	0.42 +/- 0.05 [.017 +/- .002]	7.0



- RECOMMENDED SPARE PARTS
- REFER TO SUPPLIED INSTRUCTION SHEET FOR CLEANING, LUBRICATION AND STORAGE OF APPLICATOR.
- APPLY PART NUMBER 2-23419-6 LOCTITE TO THREADS OF ITEM 242. APPLY PART NUMBER 1-23419-5 LOCTITE TO THREADS OF ITEM 180.
- CRIMP HEIGHT REFERENCE SETTING WAS THE SETTING USED WHEN THE APPLICATOR WAS QUALIFIED AT THE FACTORY. ADJUSTMENT MAY BE NECESSARY WHEN RUNNING APPLICATOR IN THE FIELD.
- TERMINAL LUBRICANT IS RECOMMENDED.
- 6. UNLESS SPECIFIED OTHERWISE TORQUE VALUES SHALL BE USED PER DOCUMENT, 101-35000.
- TERMINAL PITCH NOT COMPATIBLE WITH MECHANICAL FEED.

***WARNING**
ON INSTALLATION, SET WIRE DISC TO CRIMP HEIGHT REFERENCE SETTING FOR LARGEST WIRE SIZE. CRIMP HEIGHT REFERENCE SETTINGS GREATER THAN THE VALUE SHOWN MAY CAUSE DAMAGE TO THE CRIMP TOOLING. REFER TO THE INSTRUCTION SHEET FOR PROPER SETUP AND ADJUSTMENTS.

LOC	DIST	REVISIONS			
		REV	DATE	BY	CHKD
A	66	B	20NOV2017	JAH	CT
		C	30MAR2019	TB	CT
		D	27JUL2021	FJ	TE
		E	16SEP2021	FJ	RR

QTY	LOC	DIST	REV	DESCRIPTION	DATE	BY	CHKD
-	1	1	2119641-1	FEED CAM, AIR FEED			248
-	1	1	2119082-5	CAM, SNAIL, INSULATION ADJUSTMENT			244
-	1	1	2079764-1	WASHER, WAVE SPRING, CREST-TO-CREST			243
-	1	1	2119083-1	RETAINER, INSULATION DIAL			242
-	1	1	7-18023-7	SCR, SKT HD CAP M3 X 4.0			241
-	1	1	2844940-1	AIR FEED MODULE			238
-	1	1	1-1752354-2	STANDOFF, HOLD-DOWN			180
-	1	1	993111-1	PIN, SLOTTED SPRING 3.0 X 20.0			177
-	1	1	8-22280-7	SPRING, COMPRESSION			176
-	1	1	1752353-2	GUIDE PIN, HOLDDOWN			175
-	1	1	1901680-2	GUIDE PIN, HOLDDOWN			174
-	REF	REF	994970-2	COUNTER, MAGNETIC			164
-	1	1	2119955-1	ASSY, LUBRICATOR, SIDE FEED			113
-	1	1	2844908-1	SCREW, LOCKING			99
-	1	1	2844907-1	POST, LOCKING			98
-	1	1	2-455888-2	SPACER, CRIMPER			82
-	1	1	1803607-3	DOCUMENTATION PACKAGE			71
-	1	1	2-2119791-2	DEPRESSOR, WIRE			70
-	1	1	2119740-1	TAG, IDENTIFICATION			67
-	2	2	2168078-1	SCREW, DRIVE, RH, RoHS, 2 x .188			66
-	1	1	2168083-2	SCR, SKT HD CAP, RoHS, M4 X 8.0			60
-	1	1	5-18022-5	SCR, HEX HD CAP, M4 X 6.0			59
-	2	2	1-2079383-0	SCR, BHSC, RoHS (M3 X 6)			57
-	1	1	1338685-1	PAWL, FEED			56
-	4	4	2168083-3	SCR, SKT HD CAP, RoHS, M4 X 12.0			54
-	1	1	2-1976053-3	LOCATER BLOCK, TERMINAL			53
-	1	1	1-5018030-0	NUT, HEX, REG, RoHS, M3.5			52
-	1	1	1901681-8	HOLDDOWN, TERMINAL			51
-	1	1	18023-9	SCR, SKT HD CAP M4 X 6.0			49
-	1	1	1803583-9	APPLICATOR BASIC ASSEMBLY, SF			46
-	1	1	1803515-3	RAM ASSEMBLY, SF ATLANTIC			44
-	1	1	1803602-1	SCR, BHSC, RoHS (M8 X 25)			41
-	1	1	2-1752356-6	SUPPORT, TERMINAL			34
-	2	2	2079383-5	SCR, BHSC, RoHS (M4 X 20)			33
-	2	2	2-2844962-3	SPACER, CYLINDRICAL, STRIP GUIDE			30
-	1	1	2844992-1	ASSEMBLY, STRIP GUIDE			29
-	1	1	1320928-2	STRIP GUIDE			24
-	1	1	2168083-2	SCR, SKT HD CAP, RoHS, M4 X 8.0			21
-	2	2	1-18028-2	WASHER, FLAT, REG M4			20
-	1	1	2119533-3	STRIPPER, SIDE FEED			19
-	1	1	2119806-1	INSERT, SHEAR			13
-	1	1	3-22280-3	SPRING, COMPRESSION			12
-	1	1	1-356885-4	STOP, SHEAR			11
-	1	1	2119805-1	SHEAR HOLDER, FRONT			10
-	1	1	1803095-6	FLOATING SHEAR, FRONT			9
-	1	2	1	1803537-2	ANVIL, COMBINATION		8
-	-	-	-	-			7
-	-	-	-	-			6
-	1	1	1-2119757-8	DEPRESSOR, SHEAR			5
-	1	1	3-238011-7	BLOCK, CRIMPER SPACER			4
-	1	2	1	1-1803260-7	CRIMPER, INSULATION F PREMIUM		3
-	-	-	-	-			2
-	1	2	1	1803504-3	CRIMPER, WIRE		1

ATLANTIC VERSION
Shown on sheets 1 of 4 & 2 of 4
(Pacific version shown on sheets 3 of 4 & 4 of 4)

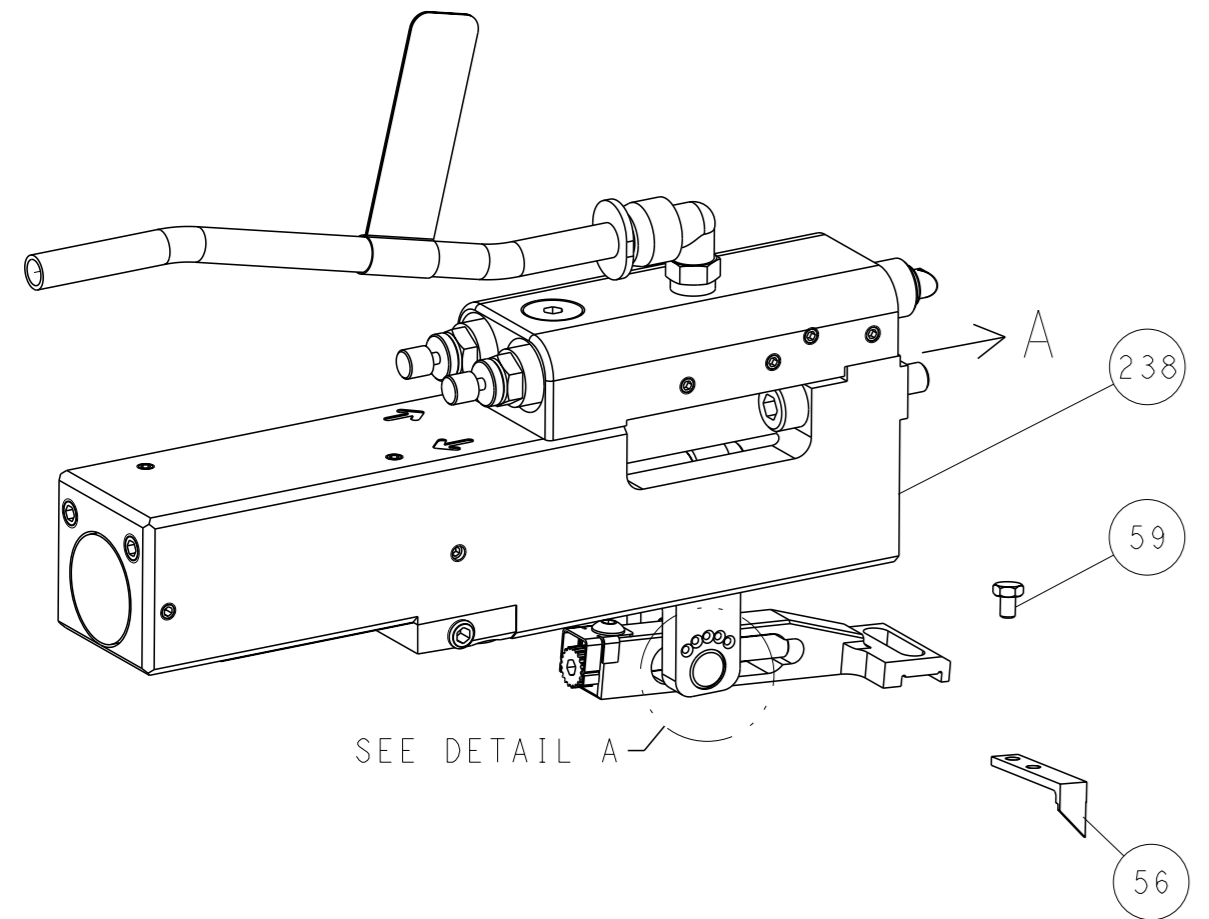
DIMENSIONS:		TOLERANCES UNLESS OTHERWISE SPECIFIED:		MATERIAL:		FINISH:	
mm		PLC	FINISH	WEIGHT	SCALE	SHEET	REV
		0 PLC	±		1:2	1	E
		1 PLC	±				
		2 PLC	±				
		3 PLC	±				
		4 PLC	±				
		ANGLES	±				

SHEETS 3 & 4 ARE NOT REQUIRED FOR ATLANTIC VERSION

LOC	DIST	REVISIONS				
A	66	REV	DESCRIPTION	DATE	OWN	APVD
-	-	1	SEE SHEET 1	-	-	-

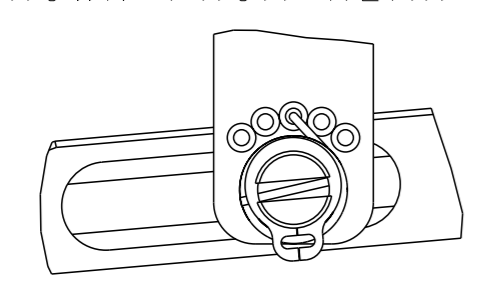
FEED TYPE

PNEUMATIC



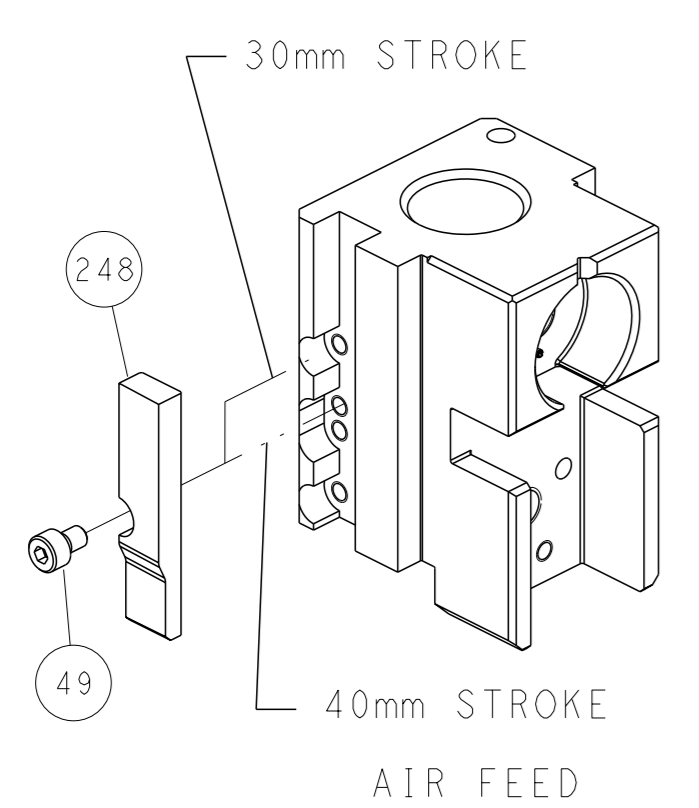
SEE DETAIL A

FEED SPRING SETTING POSITION (SHOWN FROM REAR SIDE)

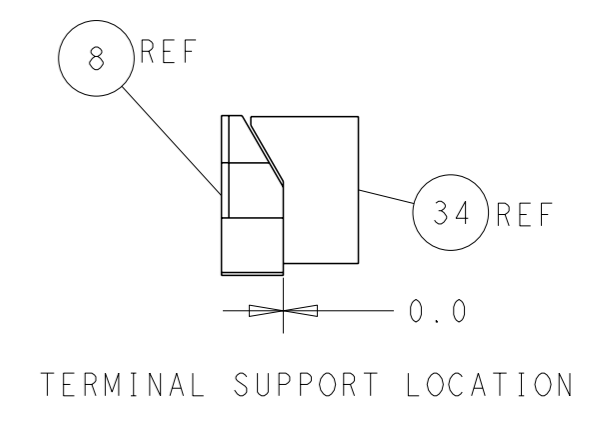
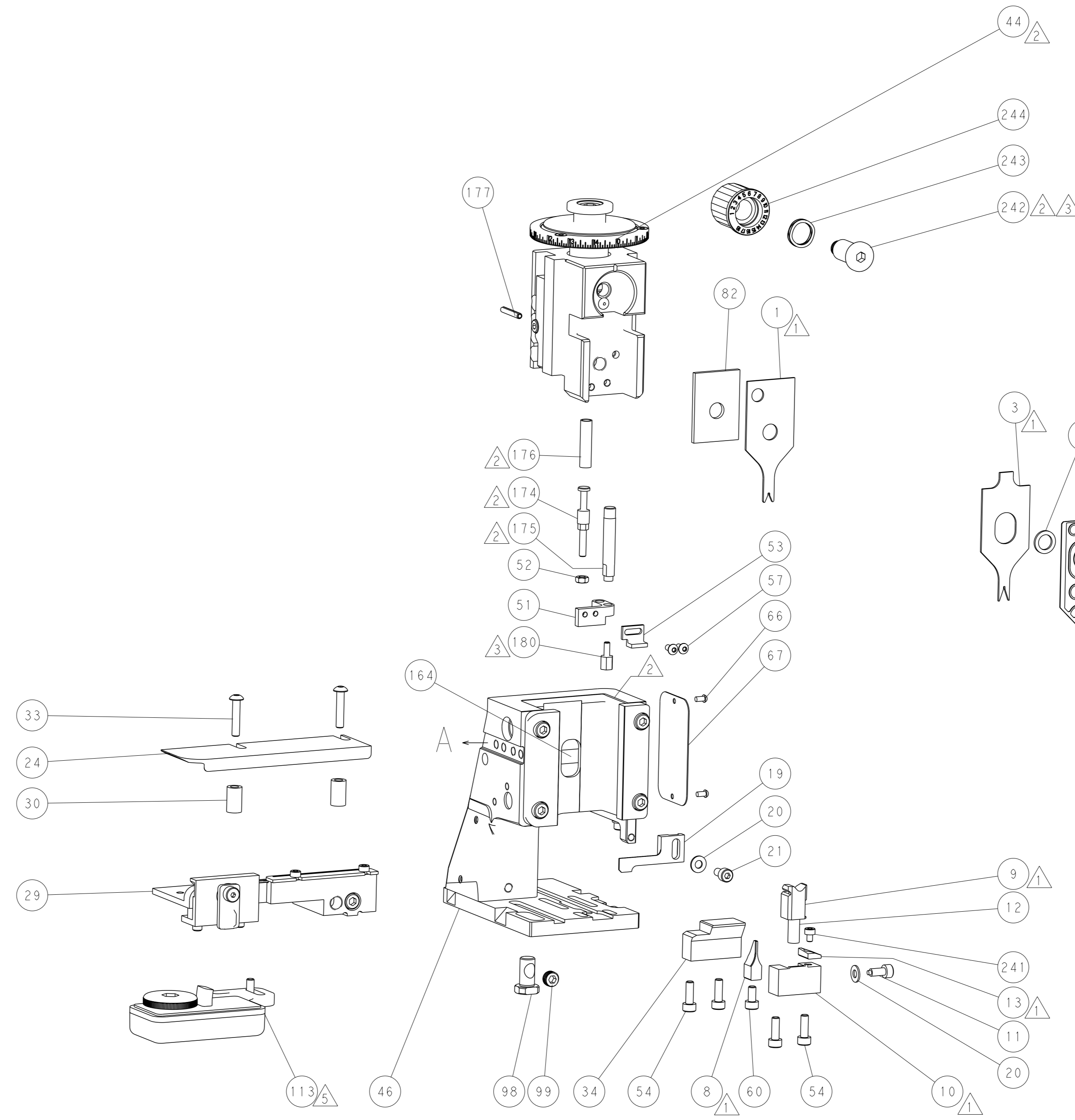


DETAIL A

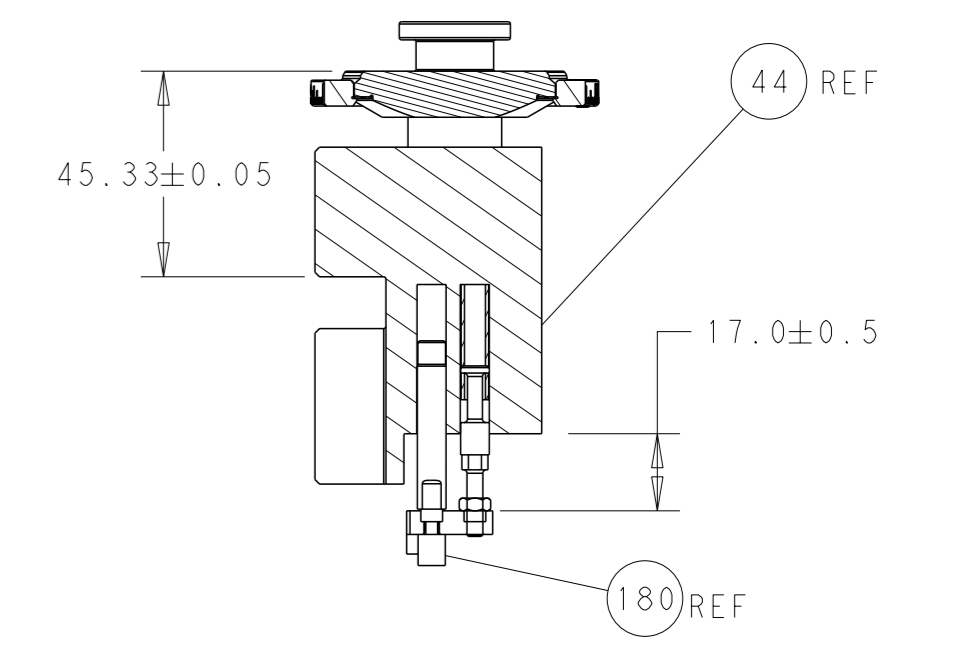
CAM POSITION



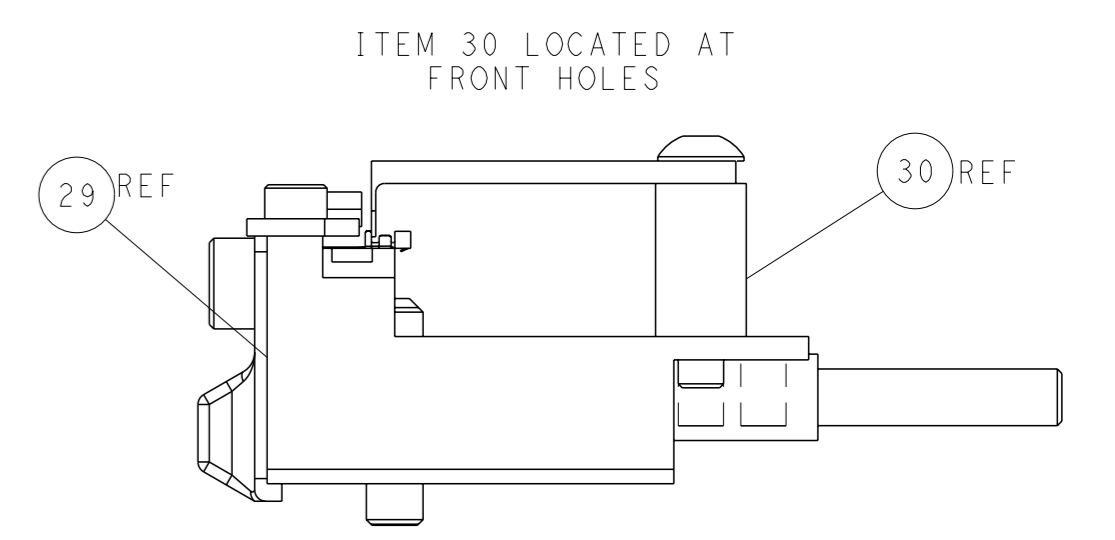
AIR FEED



TERMINAL SUPPORT LOCATION



RAM AND HOLDDOWN SET-UP



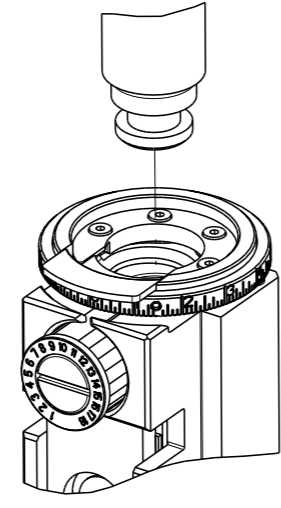
FEED TRACK POSITION GUIDE BY INSULATION BARREL

ATLANTIC VERSION
 Shown on sheets 1 of 4 & 2 of 4
 (Pacific version shown on sheets 3 of 4 & 4 of 4)

<small>THIS DRAWING IS UNPUBLISHED. RELEASED FOR PUBLICATION 2017 BY TYCO ELECTRONICS CORPORATION. ALL RIGHTS RESERVED.</small>		OWN: M. HERR CHK: T. ELBIN APVD: T. ELBIN	DATE: 15MAY2017 DATE: 15MAY2017 DATE: 15MAY2017	TE Connectivity Harrisburg, PA 17105-3608
DIMENSIONS: mm TOLERANCES UNLESS OTHERWISE SPECIFIED: 0 PLC ± 1 PLC ± 2 PLC ± 3 PLC ± 4 PLC ± ANGLES FINISH ±		NAME: Ocean Side Feed Applicator SIZE: A1 CAGE CODE: 00779 DRAWING NO: C=2836791	RESTRICTED TO: - SCALE: 1:2 SHEET: 2 of 4 REV: E	CUSTOMER ACCESSIBLE PRODUCTION DRAWING

PART NUMBER	REVISION	DESCRIPTION	FEED TYPE
2-2836791-2	E	FINE CRIMP HEIGHT ADJUST	PNEUMATIC
7-2836791-7	A	CRIMP TOOLING KIT	-

PACIFIC VERSION TERMINATOR
INTERFACE ADAPTER



APPLICATOR DATA

CRIMP	SIZE	TYPE
WIRE	0.97 mm [.038]	F
INSUL	0.90 mm [.035]	F

APPLICATOR INSTRUCTIONS 408-35042

TERMINAL DATA: JST TERMINAL JST UK CRIMP SPECIFICATION

TERMINAL NAME: ZH CONNECTOR

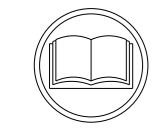
WIRE STRIP LENGTH	INSULATION DIAMETER RANGE
1.40-2.16 mm [.055-.085 IN]	Ø0.50-0.90 mm [.020-.035 IN]

TERMINAL APPLICATION SPECIFICATION H4009/017-00 Rev 29-01-01

TERMINALS APPLIED

TE TERMINAL	JST TERMINAL	TE TERMINAL	JST TERMINAL
2113165-1	SZH-003T-P0.5		

WIRE SIZE	CRIMP HEIGHT mm [INCH]	CRIMP HEIGHT REFERENCE SETTING
28 AWG	0.52+/-0.05 [.020+/-0.002]	5.8
30 AWG	0.47+/-0.05 [.019+/-0.002]	6.3
32 AWG	0.42+/-0.05 [.017+/-0.002]	7.0



- 1 RECOMMENDED SPARE PARTS
- 2 REFER TO SUPPLIED INSTRUCTION SHEET FOR CLEANING, LUBRICATION AND STORAGE OF APPLICATOR.
- 3 APPLY PART NUMBER 2-23419-6 LOCTITE TO THREADS OF ITEM 242. APPLY PART NUMBER 1-23419-5 LOCTITE TO THREADS OF ITEM 180.
- 4 CRIMP HEIGHT REFERENCE SETTING WAS THE SETTING USED WHEN THE APPLICATOR WAS QUALIFIED AT THE FACTORY. ADJUSTMENT MAY BE NECESSARY WHEN RUNNING APPLICATOR IN THE FIELD.
- 5 TERMINAL LUBRICANT IS RECOMMENDED.
- 6 UNLESS SPECIFIED OTHERWISE TORQUE VALUES SHALL BE USED PER DOCUMENT, 101-35000.
- 7 TERMINAL PITCH NOT COMPATIBLE WITH MECHANICAL FEED.

***WARNING**
 ON INSTALLATION, SET WIRE DISC TO CRIMP HEIGHT REFERENCE SETTING FOR LARGEST WIRE SIZE. CRIMP HEIGHT REFERENCE SETTINGS GREATER THAN THE VALUE SHOWN MAY CAUSE DAMAGE TO THE CRIMP TOOLING. REFER TO THE INSTRUCTION SHEET FOR PROPER SETUP AND ADJUSTMENTS.

LOC A DIST 66

REVISIONS				
#	LY#	DESCRIPTION	DATE	OWN
-	-	SEE SHEET 1	-	-

-	1	2119082-5	CAM, SNAIL, INSULATION ADJUSTMENT	244
-	1	2079764-1	WASHER, WAVE SPRING, CREST-TO-CREST	243
-	1	2119083-1	RETAINER, INSULATION DIAL	242
-	1	7-18023-7	SCR, SKT HD CAP M3 X 4.0	241
-	1	2844940-1	AIR FEED MODULE	238
-	1	1-1752354-2	STANDOFF, HOLD-DOWN	180
-	1	993111-1	PIN, SLOTTED SPRING 3.0 X 20.0	177
-	1	8-22280-7	SPRING, COMPRESSION	176
-	1	1752353-2	GUIDE PIN, HOLDDOWN	175
-	1	1901680-2	GUIDE PIN, HOLDDOWN	174
-	REF	994970-2	COUNTER, MAGNETIC	164
-	1	2119641-2	FEED CAM, AIR FEED	151
-	1	2168083-8	SCR, SKT HD CAP, RoHS, M4 X 16	144
-	4	2168083-9	SCR, SKT HD CAP, RoHS, M4 X 20	143
-	1	1-1803583-0	APPLICATOR BASIC ASSEMBLY, SF	141
-	1	1803516-1	RAM ASSEMBLY, SF PACIFIC	140
-	1	2119955-1	ASSY, LUBRICATOR, SIDE FEED	113
-	1	2844908-1	SCREW, LOCKING	99
-	1	2844907-1	POST, LOCKING	98
-	1	2-455888-2	SPACER, CRIMPER	82
-	1	1803607-3	DOCUMENTATION PACKAGE	71
-	1	2-2119791-2	DEPRESSOR, WIRE	70
-	1	2119740-1	TAG, IDENTIFICATION	67
-	2	2168078-1	SCREW, DRIVE, RH, RoHS, 2 x .188	66
-	1	5-18022-5	SCR, HEX HD CAP, M4 X 6.0	59
-	2	1-2079383-0	SCR, BHSC, RoHS (M3 X 6)	57
-	1	1338685-1	PAWL, FEED	56
-	1	2-1976053-3	LOCATER BLOCK, TERMINAL	53
-	1	1-5018030-0	NUT, HEX, REG, RoHS, M3.5	52
-	1	1901681-8	HOLDDOWN, TERMINAL	51
-	1	18023-9	SCR, SKT HD CAP M4 X 6.0	49
-	1	1803602-1	SCR, BHSC, RoHS (M8 X 25)	41
-	1	2-1752356-6	SUPPORT, TERMINAL	34
-	2	2079383-5	SCR, BHSC, RoHS (M4 X 20)	33
-	2	2-2844962-3	SPACER, CYLINDRICAL, STRIP GUIDE	30
-	1	2844992-1	ASSEMBLY, STRIP GUIDE	29
-	1	1320928-2	STRIP GUIDE	24
-	1	2168083-2	SCR, SKT HD CAP, RoHS, M4 X 8.0	21
-	2	1-18028-2	WASHER, FLAT, REG M4	20
-	1	2119533-3	STRIPPER, SIDE FEED	19
-	1	2119806-1	INSERT, SHEAR	13
-	1	3-22280-3	SPRING, COMPRESSION	12
-	1	1-356885-4	STOP, SHEAR	11
-	1	2119805-1	SHEAR HOLDER, FRONT	10
-	1	1803095-6	FLOATING SHEAR, FRONT	9
-	1	1803537-2	ANVIL, COMBINATION	8
-	-	-	-	7
-	-	-	-	6
-	1	1-2119757-8	DEPRESSOR, SHEAR	5
-	1	3-238011-7	BLOCK, CRIMPER SPACER	4
-	1	1-1803260-7	CRIMPER, INSULATION F PREMIUM	3
-	-	-	-	2
-	1	1803504-3	CRIMPER, WIRE	1
-	77	22	PART NO	ITEM NO

PACIFIC VERSION
 Shown on sheets 3 of 4 & 4 of 4
 (Atlantic version shown on sheets 1 of 4 & 2 of 4)

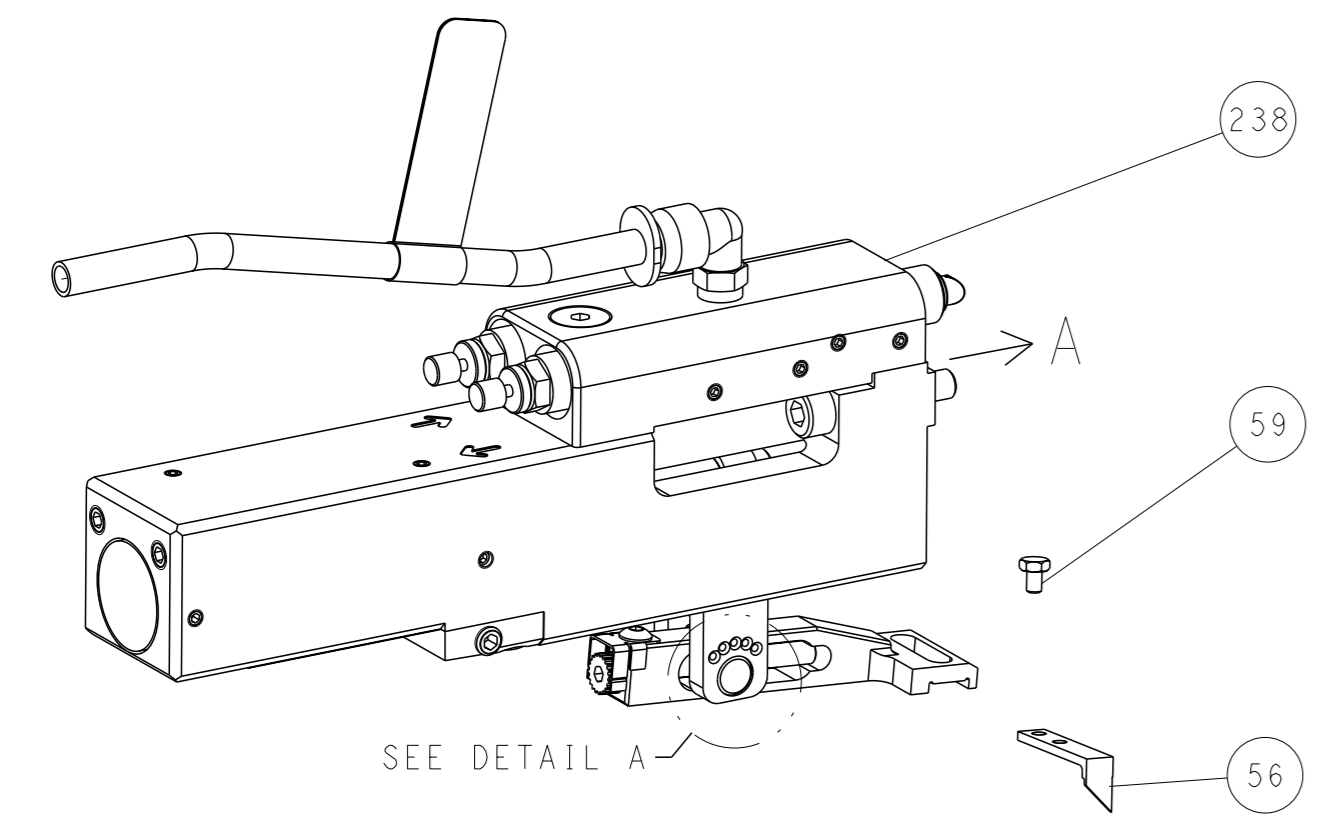
DIMENSIONS: mm 0 PLC ± 1 PLC ± 2 PLC ± 3 PLC ± 4 PLC ± ANGLE FINISH ±		TOLERANCES UNLESS OTHERWISE SPECIFIED: mm 0 PLC ± 1 PLC ± 2 PLC ± 3 PLC ± 4 PLC ± ANGLE FINISH ±		DWG M_HERR 15MAY2017 CHK T_ELBIN 15MAY2017 APVD T_ELBIN 15MAY2017 PRODUCT SPEC APPLICATION SPEC WEIGHT MATERIAL	NAME STE TE Connectivity Harrisburg, PA 17105-3608 Ocean Side Feed Applicator SIZE CAGE CODE DRAWING NO A1 00779 ©=2836791 RESTRICTED TO
Customer Accessible Production Drawing			SCALE 1:2	SHEET 3 of 4	REV E

AMP 4805 REV 31MAR2000

LOC	DIST	REVISIONS			
A	66	REV	DATE	OWN	APVD
-	-	SEE SHEET 1	-	-	-

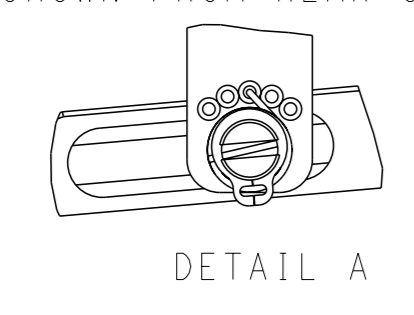
FEED TYPE

PNEUMATIC



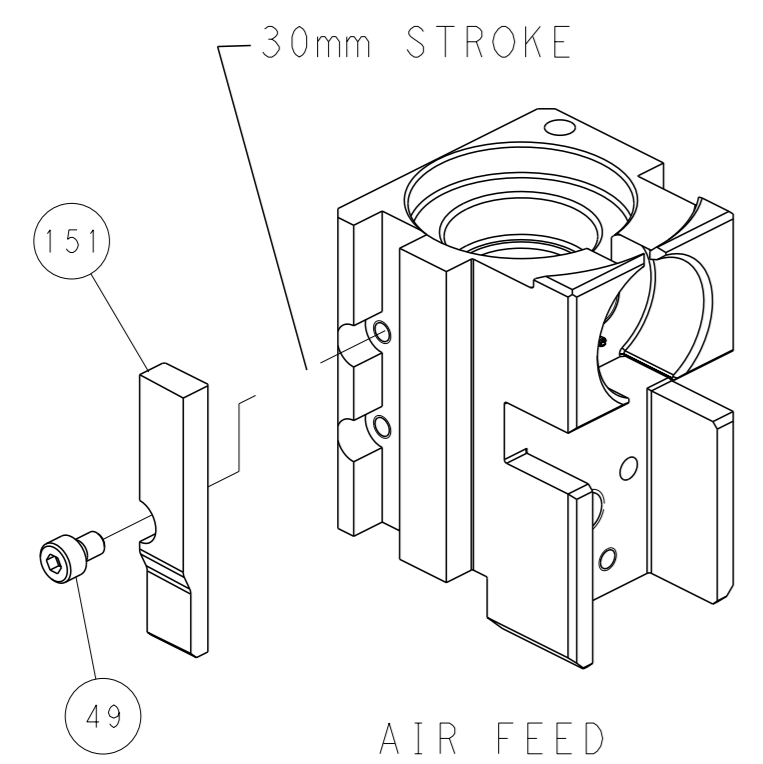
SEE DETAIL A

FEED SPRING SETTING POSITION (SHOWN FROM REAR SIDE)

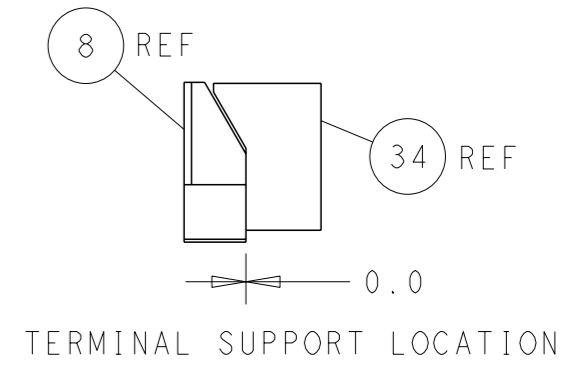
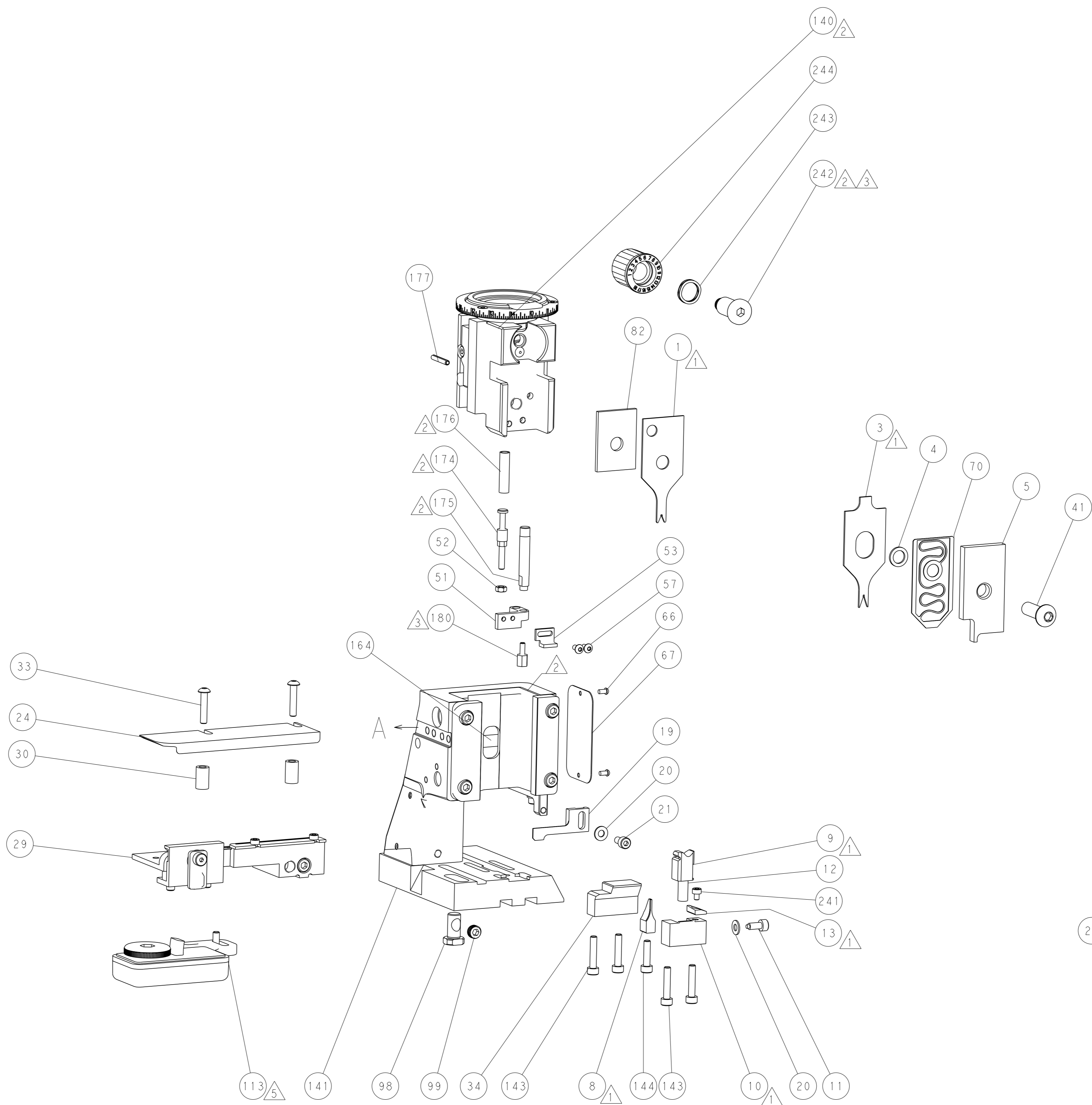


DETAIL A

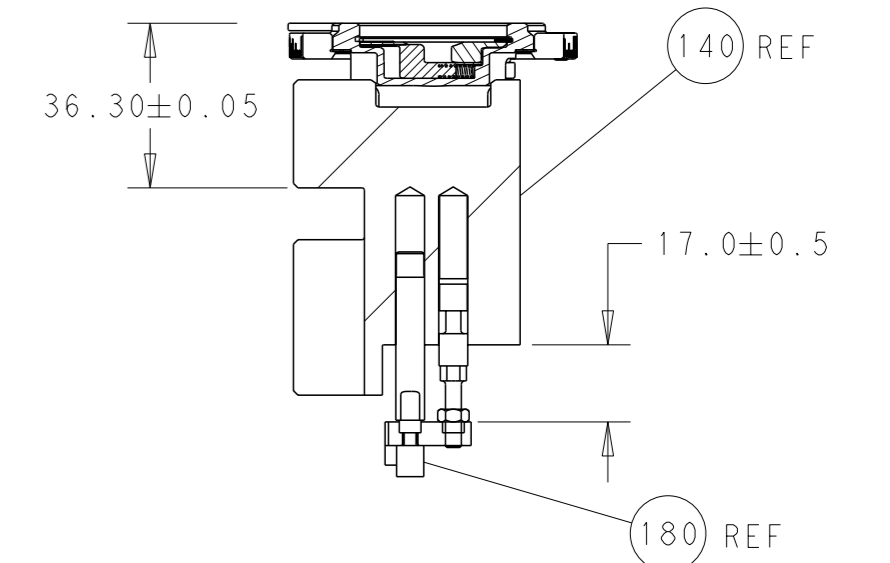
CAM POSITION



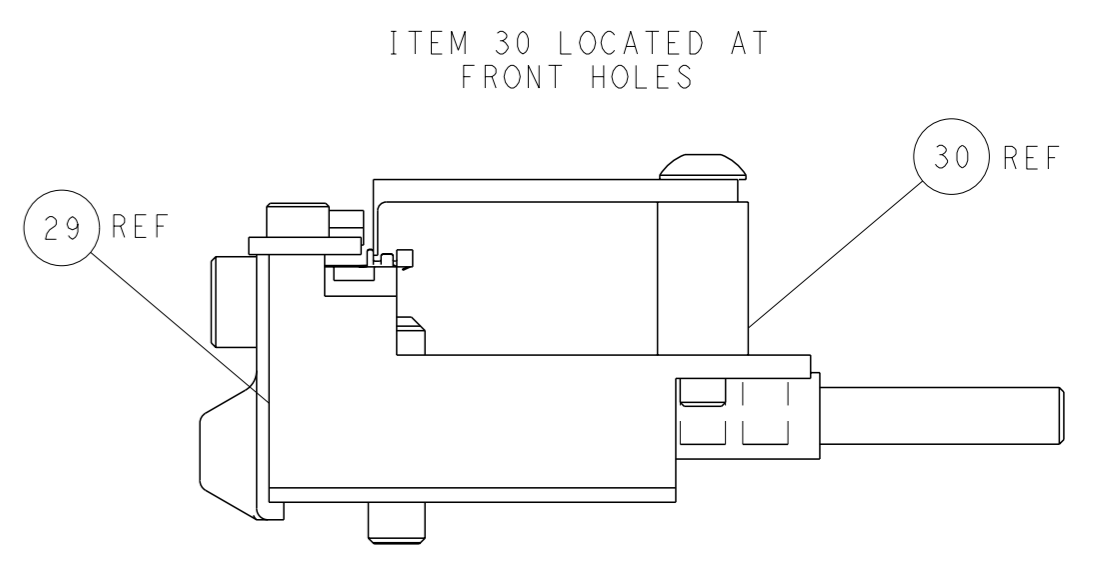
AIR FEED



TERMINAL SUPPORT LOCATION



RAM AND HOLDDOWN SET-UP



FEED TRACK POSITION GUIDE BY INSULATION BARREL

PACIFIC VERSION
 Shown on sheets 3 of 4 & 4 of 4
 (Atlantic version shown on sheets 1 of 4 & 2 of 4)

<small>THIS DRAWING IS A CONTROLLED DOCUMENT FOR TYCO ELECTRONICS CORPORATION. IT IS SUBJECT TO CHANGE AND THE CONTROLLER'S ENGINEERING DEPARTMENT SHOULD BE CONTACTED FOR THE LATEST REVISION.</small>		OWN: M. HERR CHK: T. ELBIN APVD: T. ELBIN DATE: 15MAY2017	NAME: Ocean Side Feed Applicator SIZE: A1 SCALE: 1:2
DIMENSIONS: mm TOLERANCES UNLESS OTHERWISE SPECIFIED: 0 PLC ± 1 PLC ± 2 PLC ± 3 PLC ± 4 PLC ± ANGLES FINISH *	TOLERANCES UNLESS OTHERWISE SPECIFIED: 0 PLC ± 1 PLC ± 2 PLC ± 3 PLC ± 4 PLC ± ANGLES FINISH *	WEIGHT: - Customer Accessible Production Drawing	SHEET 4 OF 4 REV E