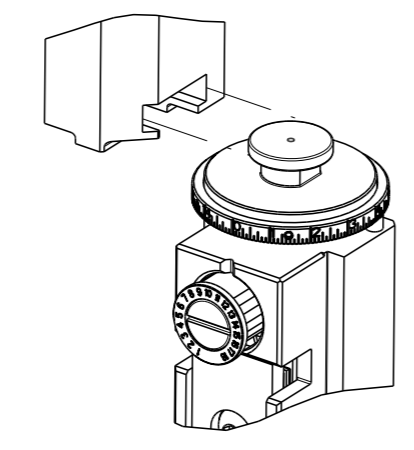


| PART NUMBER | REVISION | DESCRIPTION | FEED TYPE |
|-------------|----------|----------------------------------|---|
| 2837039-1 | B | FINE CRIMP HEIGHT ADJUST | MECHANICAL |
| 2837039-2 | C | FINE CRIMP HEIGHT ADJUST | PNEUMATIC |
| 3-2837039-2 | C | FINE CRIMP HEIGHT ADJUST | DOUBLE ACTING PNEUMATIC WITH SENSORS ⁷ |
| 7-2837039-1 | B | MECHANICAL AND CRIMP TOOLING KIT | MECHANICAL |
| 7-2837039-2 | C | PNEUMATIC AND CRIMP TOOLING KIT | PNEUMATIC |
| 7-2837039-7 | A | CRIMP TOOLING KIT | - |

ATLANTIC VERSION TERMINATOR INTERFACE ADAPTER



| APPLICATOR DATA | | |
|-----------------|----------------|------|
| CRIMP | SIZE | TYPE |
| WIRE | 1.40 mm [.055] | F |
| INSUL | 1.70 mm [.067] | F |

APPLICATOR INSTRUCTIONS 408-35042

| TERMINAL DATA: DELPHI TERMINAL DELPHI CRIMP SPECIFICATION | | | |
|---|--------------------------------------|-------------|-----------------|
| TERMINAL NAME: TAXI TERM F OCS 1.2 | | | |
| WIRE STRIP LENGTH | TERMINAL INSULATION DIAMETER RANGE | | |
| 3.86-4.62 mm [.152-.182 IN] | Ø1.45-1.88 mm [.057-.074 IN] | | |
| TERMINAL APPLICATION SPECIFICATION | (A)13543114 CRIMP INFO SHT-PG 1 OF 6 | | |
| TERMINALS APPLIED ³ ⁷ | | | |
| TE TERMINAL | DELPHI TERMINAL | TE TERMINAL | DELPHI TERMINAL |
| (A) 3311044-1 | (A) 13543114 | | |

| TERMINAL DATA: DELPHI TERMINAL DELPHI CRIMP SPECIFICATION | | | |
|---|------------------------------------|-------------|-----------------|
| TERMINAL NAME: TAXI TERM F OCS 1.2 | | | |
| WIRE STRIP LENGTH | TERMINAL INSULATION DIAMETER RANGE | | |
| 3.86-4.62 mm [.152-.182 IN] | Ø1.45-1.88 mm [.057-.074 IN] | | |
| TERMINAL APPLICATION SPECIFICATION | (B)APTIV Rev - | | |
| TERMINALS APPLIED ⁵ ⁷ | | | |
| TE TERMINAL | DELPHI TERMINAL | TE TERMINAL | DELPHI TERMINAL |
| (B) 3311044-2 | (B) 35410016 | | |

| TERMINAL DATA: DELPHI TERMINAL DELPHI CRIMP SPECIFICATION | | | |
|---|------------------------------------|-------------|-----------------|
| TERMINAL NAME: TAXI TERM F OCS 1.2 | | | |
| WIRE STRIP LENGTH | TERMINAL INSULATION DIAMETER RANGE | | |
| 3.86-4.62 mm [.152-.182 IN] | Ø1.45-1.88 mm [.057-.074 IN] | | |
| TERMINAL APPLICATION SPECIFICATION | (B)APTIV Rev - | | |
| TERMINALS APPLIED ⁵ ⁷ | | | |
| TE TERMINAL | DELPHI TERMINAL | TE TERMINAL | DELPHI TERMINAL |
| (B) 3311044-3 | (B) 35072391 | | |

| WIRE SIZE | CRIMP HEIGHT mm [INCH] | CRIMP HEIGHT REFERENCE SETTING |
|-----------|-------------------------------|--------------------------------|
| 0.50mm2 | 0.90 +/- 0.05 [.035 +/- .002] | 6.5 |
| 0.35mm2 | 0.85 +/- 0.05 [.033 +/- .002] | 6.9 |

| WIRE SIZE | CRIMP HEIGHT mm [INCH] | CRIMP HEIGHT REFERENCE SETTING |
|-----------|-------------------------------|--------------------------------|
| 0.35mm2 | 0.81 +/- 0.05 [.032 +/- .002] | 6.9 |

| WIRE SIZE | CRIMP HEIGHT mm [INCH] | CRIMP HEIGHT REFERENCE SETTING |
|-----------|-------------------------------|--------------------------------|
| 0.50mm2 | 0.90 +/- 0.05 [.035 +/- .002] | 6.5 |

- ¹ RECOMMENDED SPARE PARTS
- ² REFER TO SUPPLIED INSTRUCTION SHEET FOR CLEANING, LUBRICATION AND STORAGE OF APPLICATOR.
- ³ APPLY PART NUMBER 2-23419-6 LOCTITE TO THREADS OF ITEM 242.
- ⁴ CRIMP HEIGHT REFERENCE SETTING WAS THE SETTING USED WHEN THE APPLICATOR WAS QUALIFIED AT THE FACTORY. ADJUSTMENT MAY BE NECESSARY WHEN RUNNING APPLICATOR IN THE FIELD.
- ⁵ TERMINAL LUBRICANT IS RECOMMENDED.
- 6. UNLESS SPECIFIED OTHERWISE TORQUE VALUES SHALL BE USED PER DOCUMENT, 101-35000.
- ⁷ THIS APPLICATOR IS EQUIPPED WITH THE DOUBLE ACTING FEED WITH SENSORS AND IS APPLICATION SPECIFIC. IT DOES NOT REQUIRE ITEMS 49 & 248.

***WARNING**
 ON INSTALLATION, SET WIRE DISC TO CRIMP HEIGHT REFERENCE SETTING FOR LARGEST WIRE SIZE. CRIMP HEIGHT REFERENCE SETTINGS GREATER THAN THE VALUE SHOWN MAY CAUSE DAMAGE TO THE CRIMP TOOLING, REFER TO THE INSTRUCTION SHEET FOR PROPER SETUP AND ADJUSTMENTS.

ATLANTIC VERSION
 Shown on sheets 1 of 4 & 2 of 4
 (Pacific version shown on sheets 3 of 4 & 4 of 4)

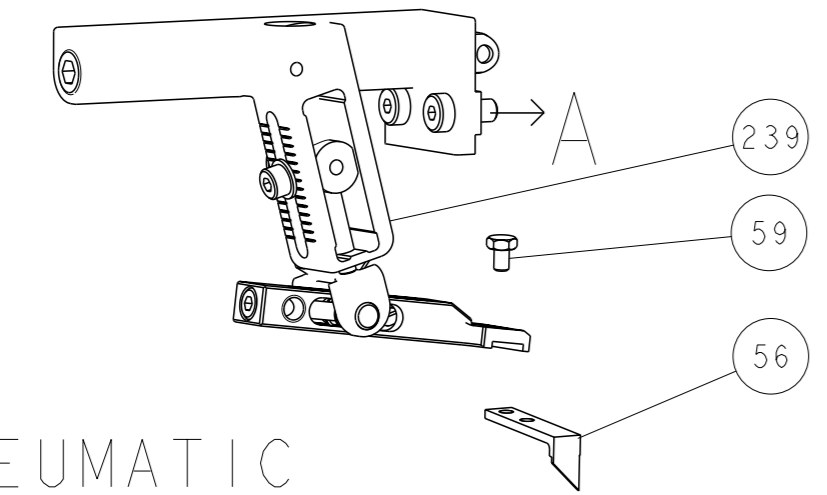
| LOC | DIST | REVISIONS | | | | | |
|-----|------|-----------|-----|---------------|-------------|-----|------|
| A | 66 | # | LY# | DESCRIPTION | DATE | OWN | APVD |
| | | A | | RELEASED | 26 JAN 2018 | KH | TE |
| | | B | | ECR-18-009964 | 27 JUN 2018 | MZ | TE |
| | | B1 | | ECR-20-006627 | 08 MAY 2020 | FZ | RR |
| | | C | | ECR-20-014784 | 19 OCT 2020 | FZ | RR |

| | | | | | | | | | |
|--------------|---|-----|-----|-----|-----|-----|-------------|-------------------------------------|-----|
| ⁷ | - | - | - | 1 | - | - | 2844950-1 | AIR FEED MODULE | 290 |
| | - | 1 | - | - | 1 | - | 2119641-1 | FEED CAM, AIR FEED | 248 |
| | - | 1 | 1 | 1 | 1 | 1 | 2119082-8 | CAM, SNAIL, INSULATION ADJUSTMENT | 244 |
| | - | 1 | 1 | 1 | 1 | 1 | 2079764-1 | WASHER, WAVE SPRING, CREST-TO-CREST | 243 |
| ³ | - | 1 | 1 | 1 | 1 | 1 | 2119083-1 | RETAINER, INSULATION DIAL | 242 |
| | - | 1 | 1 | 1 | 1 | 1 | 7-18023-7 | SCR, SKT HD CAP M3 X 4.0 | 241 |
| | - | - | 1 | - | - | 1 | 2119580-1 | MECHANICAL FEED ASSEMBLY | 239 |
| | - | 1 | - | - | 1 | - | 2844940-1 | AIR FEED MODULE | 238 |
| | - | REF | REF | REF | REF | REF | 994970-2 | COUNTER, MAGNETIC | 164 |
| ⁵ | - | 1 | 1 | 1 | 1 | 1 | 2119955-1 | ASSY, LUBRICATOR, SIDE FEED | 113 |
| | - | 1 | 1 | 1 | 1 | 1 | 2844908-1 | SCREW, LOCKING | 99 |
| | - | 1 | 1 | 1 | 1 | 1 | 2844907-1 | POST, LOCKING | 98 |
| | - | 1 | 1 | 1 | 1 | 1 | 455888-7 | SPACER, CRIMPER | 82 |
| | - | 1 | 1 | 1 | 1 | 1 | 1803607-3 | DOCUMENTATION PACKAGE | 71 |
| | - | 1 | 1 | 1 | 1 | 1 | 2119791-5 | DEPRESSOR, WIRE | 70 |
| | - | 1 | 1 | 1 | 1 | 1 | 2119943-1 | WASHER, SPACER | 69 |
| | - | 1 | 1 | 1 | 1 | 1 | 2119740-1 | TAG, IDENTIFICATION | 67 |
| | - | 2 | 2 | 2 | 2 | 2 | 2168078-1 | SCREW, DRIVE, RH, RoHS, 2 x .188 | 66 |
| | - | 1 | 1 | 1 | 1 | 1 | 2168083-2 | SCR, SKT HD CAP, RoHS, M4 X 8.0 | 60 |
| | - | 1 | 1 | 1 | 1 | 1 | 5-18022-5 | SCR, HEX HD CAP, M4 X 6.0 | 59 |
| | - | 1 | 1 | 1 | 1 | 1 | 1338685-1 | PAWL, FEED | 56 |
| | - | 4 | 4 | 4 | 4 | 4 | 2168083-3 | SCR, SKT HD CAP, RoHS, M4 X 12.0 | 54 |
| | - | 2 | 2 | 2 | 2 | 2 | 2-2168083-5 | SCR, SKT HD CAP, RoHS, M4 X 14 | 53 |
| | - | 1 | 1 | 1 | 1 | 1 | 1803382-1 | HOLD DOWN, SPRING LOADED | 50 |
| ⁷ | - | 1 | 2 | - | 1 | 2 | 18023-9 | SCR, SKT HD CAP M4 X 6.0 | 49 |
| | - | - | 1 | - | - | 1 | 2119652-1 | FEED CAM, PRE FEED | 48 |
| | - | - | 1 | - | - | 1 | 2119653-1 | FEED CAM, POST FEED | 47 |
| | - | 1 | 1 | 1 | 1 | 1 | 1803583-9 | APPLICATOR BASIC ASSEMBLY, SF | 46 |
| | - | 1 | 1 | 1 | 1 | 1 | 1803515-1 | RAM ASSEMBLY, SF ATLANTIC | 44 |
| | - | 1 | 1 | 1 | 1 | 1 | 1803602-1 | SCR, BHSC, RoHS (M8 X 25) | 41 |
| | - | 1 | 1 | 1 | 1 | 1 | 1752356-6 | SUPPORT, TERMINAL | 34 |
| | - | 2 | 2 | 2 | 2 | 2 | 2079383-5 | SCR, BHSC, RoHS (M4 X 20) | 33 |
| | - | 2 | 2 | 2 | 2 | 2 | 2-2844962-4 | SPACER, CYLINDRICAL, STRIP GUIDE | 30 |
| | - | 1 | 1 | 1 | 1 | 1 | 2844992-1 | ASSEMBLY, STRIP GUIDE | 29 |
| | - | 1 | 1 | 1 | 1 | 1 | 455888-5 | SPACER, CRIMPER | 28 |
| | - | 1 | 1 | 1 | 1 | 1 | 1320928-2 | STRIP GUIDE | 24 |
| | - | 1 | 1 | 1 | 1 | 1 | 2168083-2 | SCR, SKT HD CAP, RoHS, M4 X 8.0 | 21 |
| | - | 2 | 2 | 2 | 2 | 2 | 1-18028-2 | WASHER, FLAT, REG M4 | 20 |
| | - | 1 | 1 | 1 | 1 | 1 | 2119533-1 | STRIPPER, SIDE FEED | 19 |
| ¹ | - | 1 | 1 | 1 | 1 | 1 | 2119806-1 | INSERT, SHEAR | 13 |
| | - | 1 | 1 | 1 | 1 | 1 | 3-22280-3 | SPRING, COMPRESSION | 12 |
| ¹ | - | 1 | 1 | 1 | 1 | 1 | 1-18023-1 | SCR, SKT HD CAP M4 X 10.0 | 11 |
| ¹ | - | 1 | 1 | 1 | 1 | 1 | 2119805-1 | SHEAR HOLDER, FRONT | 10 |
| ¹ | - | 1 | 1 | 1 | 1 | 1 | 1803095-6 | FLOATING SHEAR, FRONT | 9 |
| ¹ | 1 | 2 | 2 | 1 | 1 | 1 | 7-1633917-4 | ANVIL, COMBINATION | 8 |
| | - | 1 | 1 | 1 | 1 | 1 | 240641-3 | SPACER | 7 |
| | - | - | - | - | - | - | - | - | 6 |
| | - | 1 | 1 | 1 | 1 | 1 | 2119757-4 | DEPRESSOR, SHEAR | 5 |
| | - | 1 | 1 | 1 | 1 | 1 | 238011-9 | BLOCK, CRIMPER SPACER | 4 |
| ¹ | 1 | 2 | 2 | 1 | 1 | 1 | 3-1633962-0 | CRIMPER, INSULATION F PREMIUM | 3 |
| | - | - | - | - | - | - | - | - | 2 |
| ¹ | 1 | 2 | 2 | 1 | 1 | 1 | 3-1633860-8 | CRIMPER, WIRE | 1 |
| | - | - | - | - | - | - | - | - | 0 |

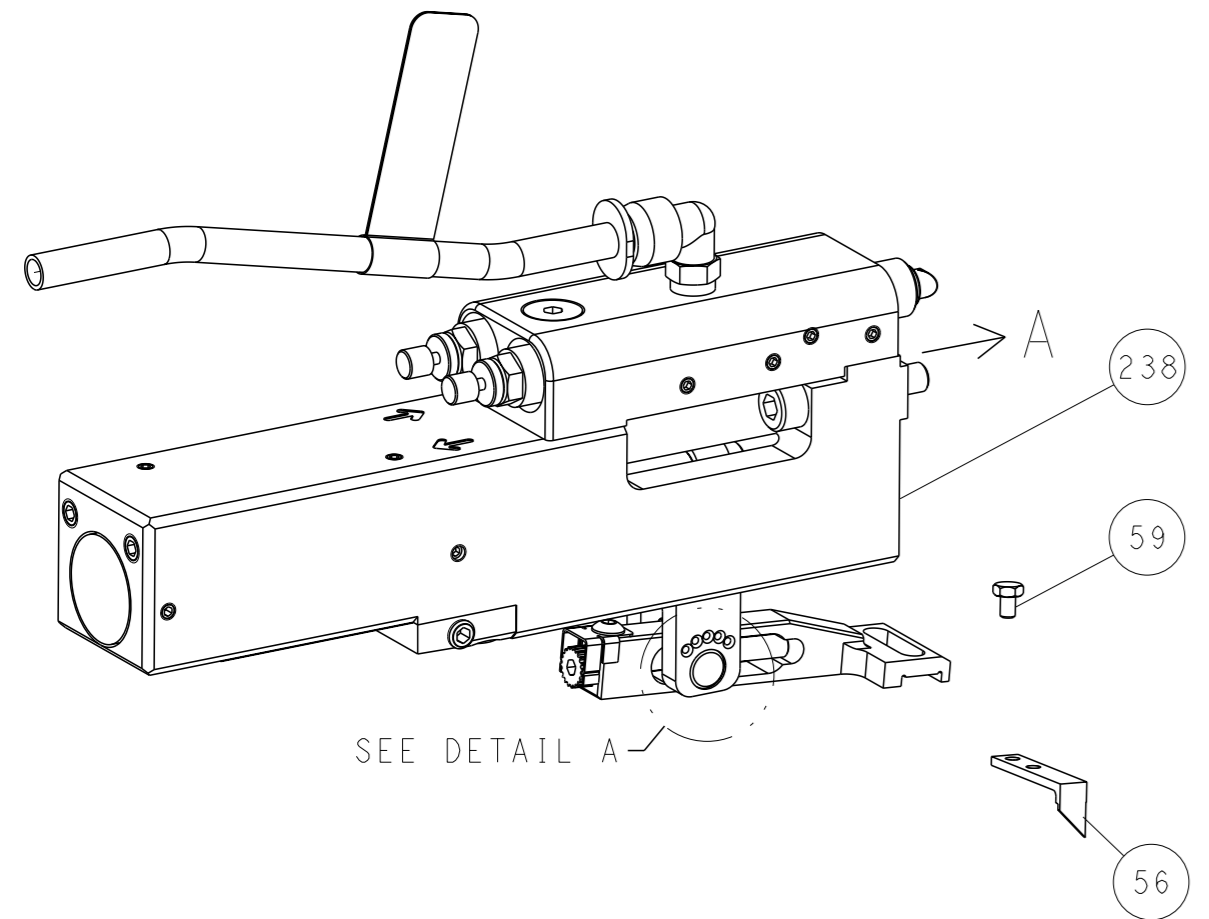
| DIMENSIONS: | | TOLERANCES UNLESS OTHERWISE SPECIFIED: | | OWN | CHK | APVD | DATE | NAME | | RESTRICTED TO |
|-------------|---------|--|---------|---------|---------|---------------|------|--|-----------|---------------|
| mm | 0 PLC ± | 1 PLC ± | 2 PLC ± | 3 PLC ± | 4 PLC ± | ANGLES FINISH | ± | APVD | L. ZHANG | 28DEC2017 |
| | | | | | | | | PRODUCT SPEC | L. ZHANG | 28DEC2017 |
| | | | | | | | | APPLICATION SPEC | L. ZHANG | 28DEC2017 |
| MATERIAL | | | | | | | | WEIGHT | | |
| | | | | | | | | Customer Accessible Production Drawing | SCALE 1:2 | SHEET 1 of 4 |

| LOC | | DIST | | REVISIONS | | | |
|-----|----|------|-----|-------------|------|-----|------|
| A | 66 | P | LYR | DESCRIPTION | DATE | OWN | APVD |
| | | - | | SEE SHEET 1 | - | - | - |

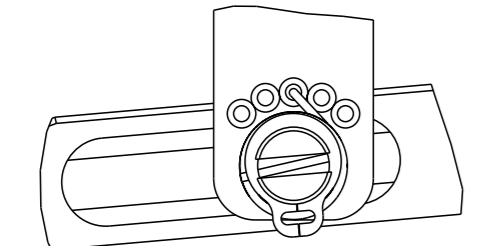
FEED TYPE MECHANICAL



PNEUMATIC

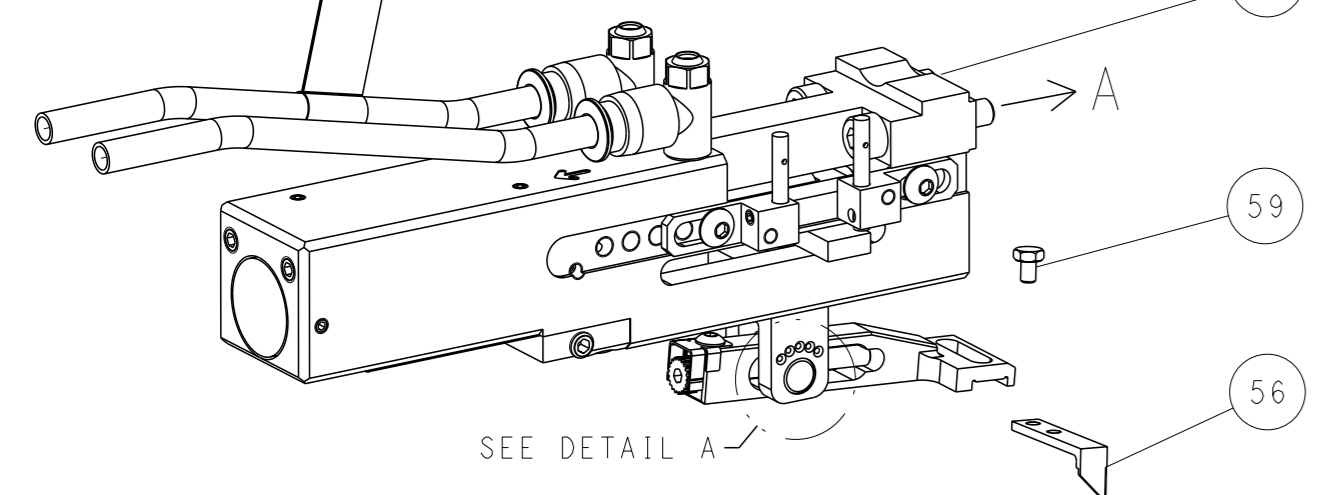


FEED SPRING SETTING POSITION (SHOWN FROM REAR SIDE)

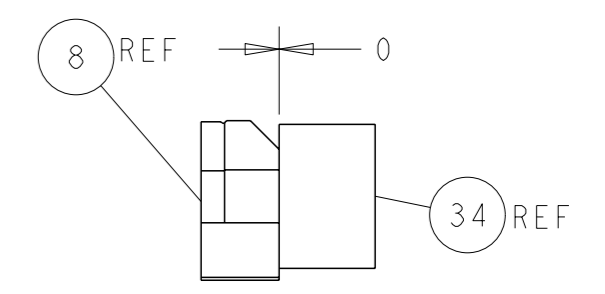
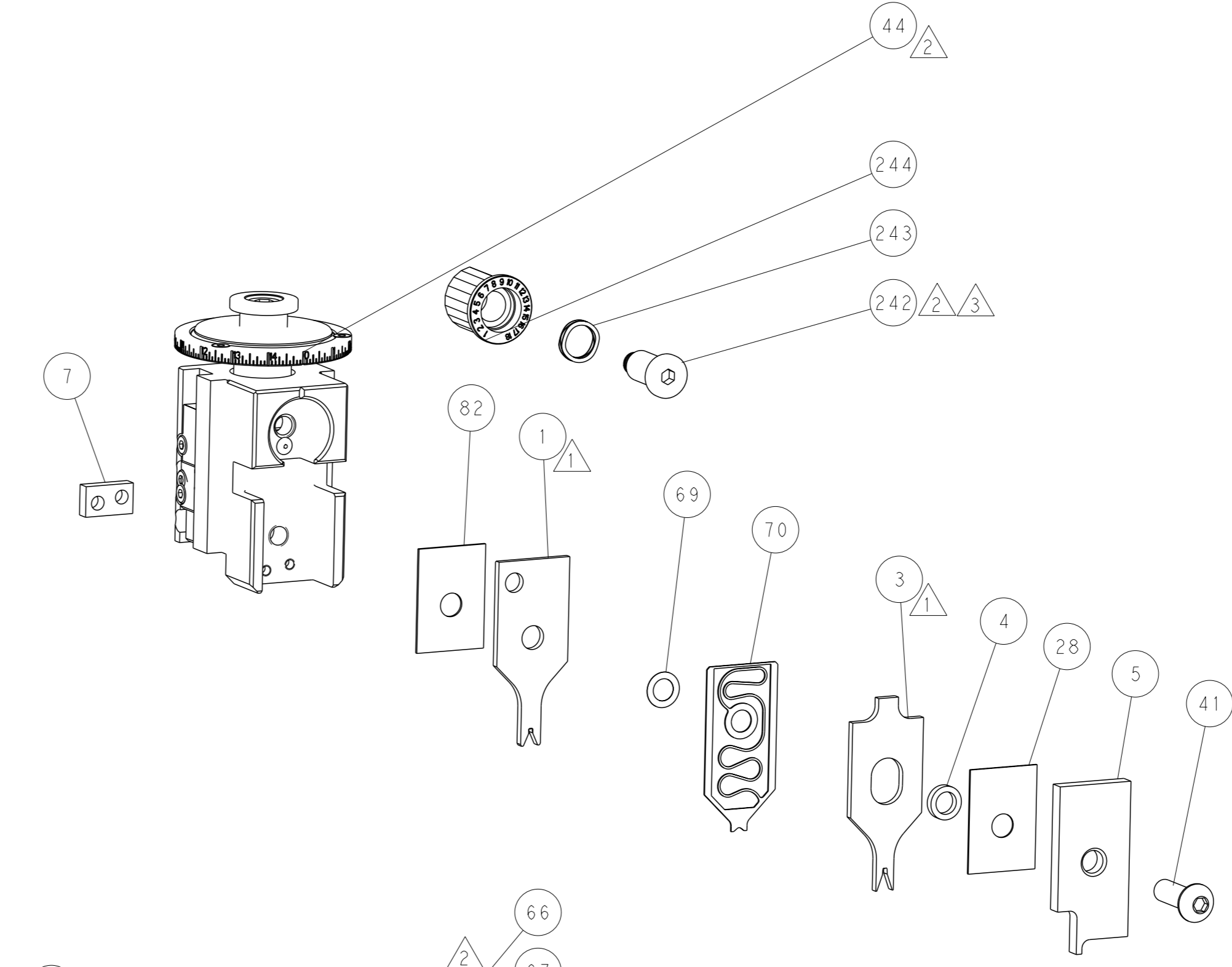
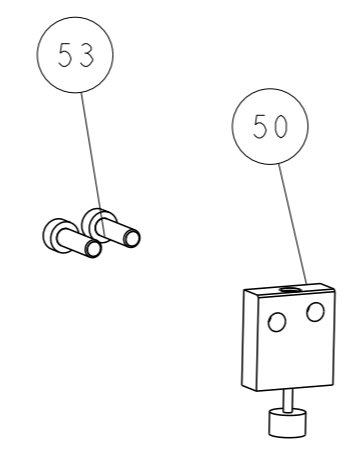
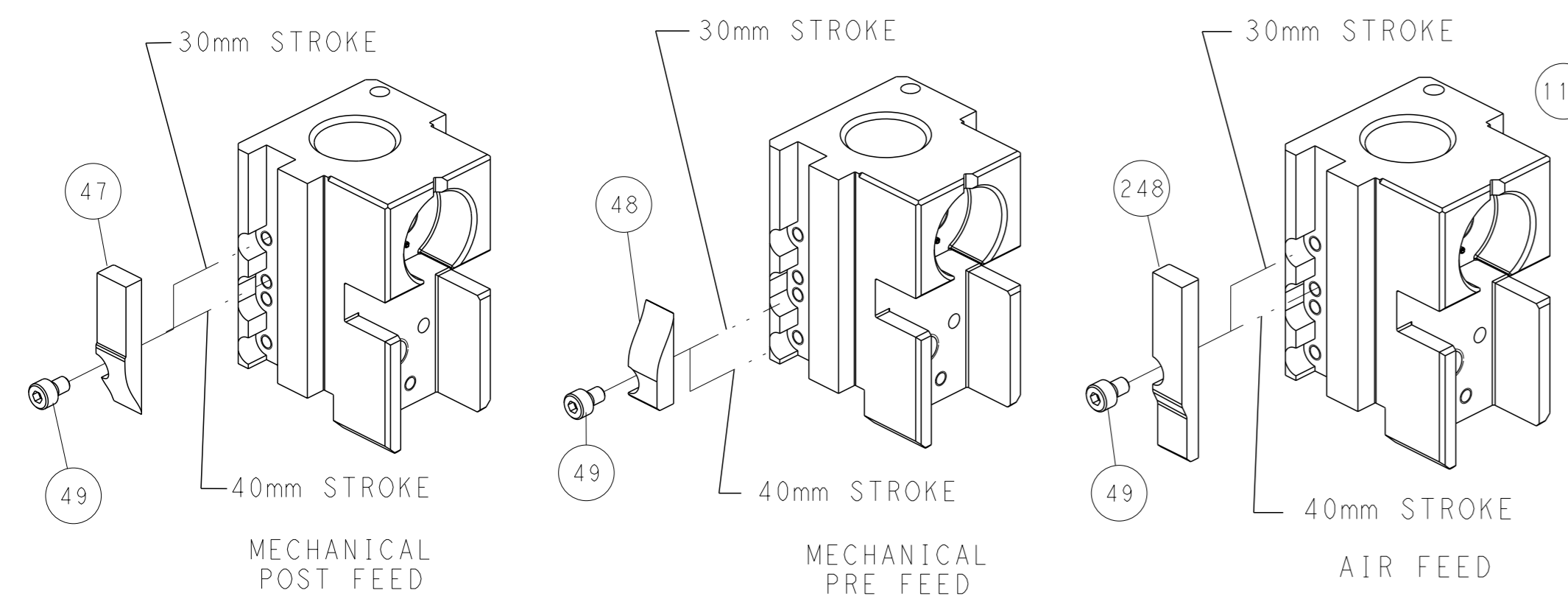


DETAIL A

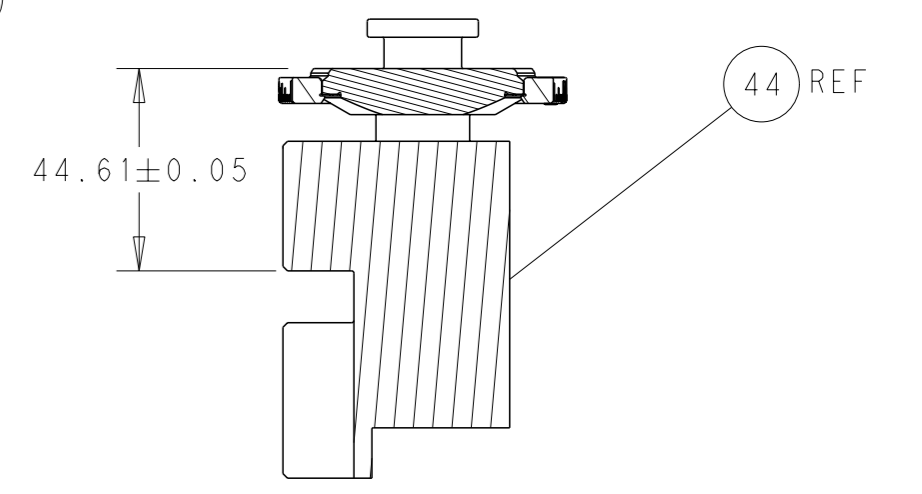
DOUBLE ACTING PNEUMATIC WITH SENSORS



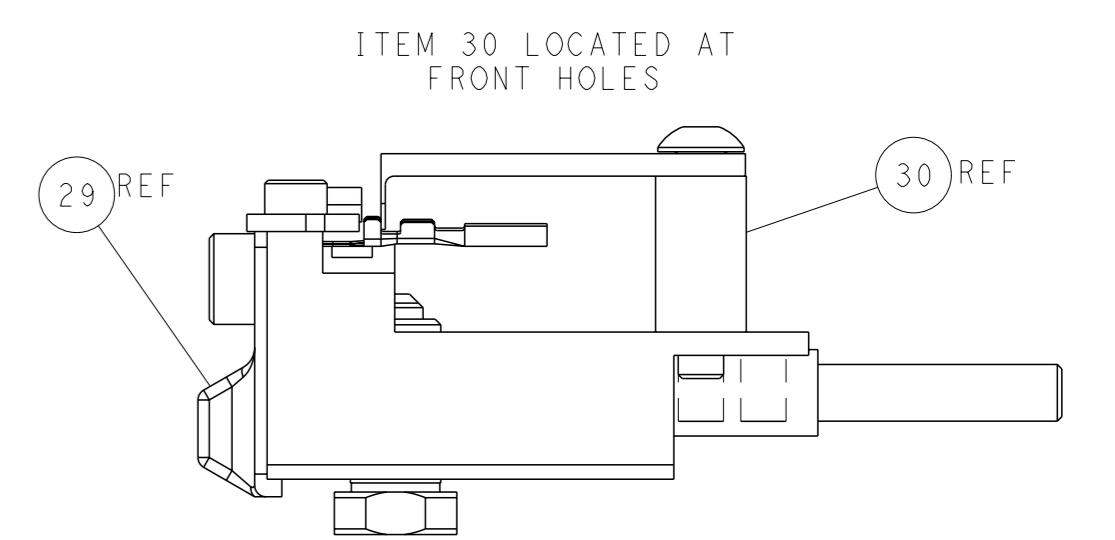
CAM POSITIONS



TERMINAL SUPPORT LOCATION



RAM SET-UP



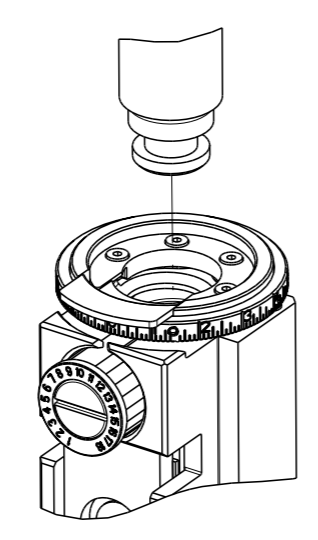
FEED TRACK POSITION GUIDE BY INSULATION BARREL

ATLANTIC VERSION
 Shown on sheets 1 of 4 & 2 of 4
 (Pacific version shown on sheets 3 of 4 & 4 of 4)

| | | | |
|--|--|---|---|
| <small>THIS DRAWING IS A CONTROLLED DOCUMENT FOR TYCO ELECTRONICS CORPORATION. IT IS SUBJECT TO CHANGE AND THE CONTROL AND RESISTING ORGANIZATION SHOULD BE CONTACTED FOR THE LATEST REVISION.</small> | | OWN: H. HUANG 28DEC2017 CHK: L. ZHANG 28DEC2017 APVD: L. ZHANG 28DEC2017 | TE Connectivity Harrisburg, PA 17105-3608 |
| DIMENSIONS: mm TOLERANCES UNLESS OTHERWISE SPECIFIED: 0 PLC ± 1 PLC ± 2 PLC ± 3 PLC ± 4 PLC ± ANGLES FINISH ± | | NAME: Ocean Side Feed Applicator SIZE: A1 CAGE CODE: 00779 DRAWING NO: C=2837039 | RESTRICTED TO: - SCALE: 1:2 SHEET: 2 of 4 REV: C |
| MATERIAL: - FINISH: - | | WEIGHT: - Customer Accessible Production Drawing | SHEETS 3 & 4 ARE NOT REQUIRED FOR ATLANTIC VERSION |

| PART NUMBER | REVISION | DESCRIPTION | FEED TYPE |
|-------------|----------|--------------------------|--------------------------------------|
| 2-2837039-1 | B | FINE CRIMP HEIGHT ADJUST | MECHANICAL |
| 2-2837039-2 | C | FINE CRIMP HEIGHT ADJUST | PNEUMATIC |
| 4-2837039-2 | C | FINE CRIMP HEIGHT ADJUST | DOUBLE ACTING PNEUMATIC WITH SENSORS |
| 7-2837039-7 | A | CRIMP TOOLING KIT | - |

PACIFIC VERSION TERMINATOR INTERFACE ADAPTER



| APPLICATOR DATA | | |
|-----------------------------------|----------------|------|
| CRIMP | SIZE | TYPE |
| WIRE | 1.40 mm (.055) | F |
| INSUL | 1.70 mm (.067) | F |
| APPLICATOR INSTRUCTIONS 408-35042 | | |

| TERMINAL DATA: DELPHI TERMINAL DELPHI CRIMP SPECIFICATION | | | |
|---|--------------------------------------|-------------|-----------------|
| TERMINAL NAME: TAXI TERM F OCS 1.2 | | | |
| WIRE STRIP LENGTH | TERMINAL INSULATION DIAMETER RANGE | | |
| 3.86-4.62 mm [.152-.182 IN] | Ø1.45-1.88 mm [.057-.074 IN] | | |
| TERMINAL APPLICATION SPECIFICATION | (A)13543114 CRIMP INFO SHT-PG 1 OF 6 | | |
| TERMINALS APPLIED | | | |
| TE TERMINAL | DELPHI TERMINAL | TE TERMINAL | DELPHI TERMINAL |
| (A) 3311044-1 | (A) 13543114 | | |

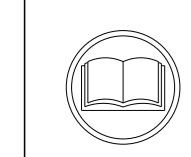
| TERMINAL DATA: DELPHI TERMINAL DELPHI CRIMP SPECIFICATION | | | |
|---|------------------------------------|-------------|-----------------|
| TERMINAL NAME: TAXI TERM F OCS 1.2 | | | |
| WIRE STRIP LENGTH | TERMINAL INSULATION DIAMETER RANGE | | |
| 3.86-4.62 mm [.152-.182 IN] | Ø1.45-1.88 mm [.057-.074 IN] | | |
| TERMINAL APPLICATION SPECIFICATION | (B)APTIV Rev - | | |
| TERMINALS APPLIED | | | |
| TE TERMINAL | DELPHI TERMINAL | TE TERMINAL | DELPHI TERMINAL |
| (B) 3311044-2 | (B) 35410016 | | |

| TERMINAL DATA: DELPHI TERMINAL DELPHI CRIMP SPECIFICATION | | | |
|---|------------------------------------|-------------|-----------------|
| TERMINAL NAME: TAXI TERM F OCS 1.2 | | | |
| WIRE STRIP LENGTH | TERMINAL INSULATION DIAMETER RANGE | | |
| 3.86-4.62 mm [.152-.182 IN] | Ø1.45-1.88 mm [.057-.074 IN] | | |
| TERMINAL APPLICATION SPECIFICATION | (B)APTIV Rev - | | |
| TERMINALS APPLIED | | | |
| TE TERMINAL | DELPHI TERMINAL | TE TERMINAL | DELPHI TERMINAL |
| (B) 3311044-3 | (B) 35072391 | | |

| WIRE SIZE | CRIMP HEIGHT mm [INCH] | CRIMP HEIGHT REFERENCE SETTING |
|-----------|-------------------------------|--------------------------------|
| 0.50mm2 | 0.90 +/- 0.05 [.035 +/- .002] | 6.5 |
| 0.35mm2 | 0.85 +/- 0.05 [.033 +/- .002] | 6.9 |

| WIRE SIZE | CRIMP HEIGHT mm [INCH] | CRIMP HEIGHT REFERENCE SETTING |
|-----------|-------------------------------|--------------------------------|
| 0.35mm2 | 0.81 +/- 0.05 [.032 +/- .002] | 6.9 |

| WIRE SIZE | CRIMP HEIGHT mm [INCH] | CRIMP HEIGHT REFERENCE SETTING |
|-----------|-------------------------------|--------------------------------|
| 0.50mm2 | 0.90 +/- 0.05 [.035 +/- .002] | 6.5 |



- 1 RECOMMENDED SPARE PARTS
- 2 REFER TO SUPPLIED INSTRUCTION SHEET FOR CLEANING, LUBRICATION AND STORAGE OF APPLICATOR.
- 3 APPLY PART NUMBER 2-23419-6 LOCTITE TO THREADS OF ITEM 242.
- 4 CRIMP HEIGHT REFERENCE SETTING WAS THE SETTING USED WHEN THE APPLICATOR WAS QUALIFIED AT THE FACTORY. ADJUSTMENT MAY BE NECESSARY WHEN RUNNING APPLICATOR IN THE FIELD.
- 5 TERMINAL LUBRICANT IS RECOMMENDED.
- 6 UNLESS SPECIFIED OTHERWISE TORQUE VALUES SHALL BE USED PER DOCUMENT, 101-35000.
- 7 THIS APPLICATOR IS EQUIPPED WITH THE DOUBLE ACTING FEED WITH SENSORS AND IS APPLICATION SPECIFIC. IT DOES NOT REQUIRE ITEMS 49 & 151.

***WARNING**
ON INSTALLATION, SET WIRE DISC TO CRIMP HEIGHT REFERENCE SETTING FOR LARGEST WIRE SIZE. CRIMP HEIGHT REFERENCE SETTINGS GREATER THAN THE VALUE SHOWN MAY CAUSE DAMAGE TO THE CRIMP TOOLING, REFER TO THE INSTRUCTION SHEET FOR PROPER SETUP AND ADJUSTMENTS.

PACIFIC VERSION
Shown on sheets 3 of 4 & 4 of 4
(Atlantic version shown on sheets 1 of 4 & 2 of 4)

| LOC | DIST | REVISIONS | | | |
|-----|------|-------------|------|----|------|
| A | 66 | REV | DATE | BY | APPV |
| - | - | SEE SHEET 1 | - | - | - |

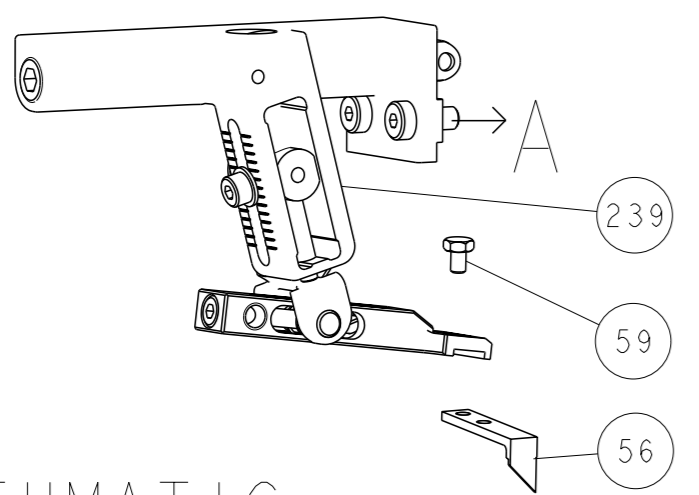
| | | | | | | | |
|---|-----|-----|-----|-------------|-------------------------------------|-------------------------------|----|
| - | 1 | - | - | 2844950-1 | AIR FEED MODULE | 290 | |
| - | 1 | 1 | 1 | 2119082-8 | CAM, SNAIL, INSULATION ADJUSTMENT | 244 | |
| - | 1 | 1 | 1 | 2079764-1 | WASHER, WAVE SPRING, CREST-TO-CREST | 243 | |
| 3 | - | 1 | 1 | 2119083-1 | RETAINER, INSULATION DIAL | 242 | |
| - | 1 | 1 | 1 | 7-18023-7 | SCR, SKT HD CAP M3 X 4.0 | 241 | |
| - | - | - | 1 | 2119580-1 | MECHANICAL FEED ASSEMBLY | 239 | |
| - | - | 1 | - | 2844940-1 | AIR FEED MODULE | 238 | |
| - | REF | REF | REF | 994970-2 | COUNTER, MAGNETIC | 164 | |
| 7 | - | 1 | - | 2119641-2 | FEED CAM, AIR FEED | 151 | |
| - | 1 | 1 | 1 | 2168083-8 | SCR, SKT HD CAP, RoHS, M4 X 16 | 144 | |
| - | 4 | 4 | 4 | 2168083-9 | SCR, SKT HD CAP, RoHS, M4 X 20 | 143 | |
| - | - | - | 1 | 2119653-2 | FEED CAM, POST FEED | 142 | |
| - | 1 | 1 | 1 | 1-1803583-0 | APPLICATOR BASIC ASSEMBLY, SF | 141 | |
| - | 1 | 1 | 1 | 1803516-1 | RAM ASSEMBLY, SF PACIFIC | 140 | |
| 5 | - | 1 | 1 | 2119955-1 | ASSY, LUBRICATOR, SIDE FEED | 113 | |
| - | 1 | 1 | 1 | 2844908-1 | SCREW, LOCKING | 99 | |
| - | 1 | 1 | 1 | 2844907-1 | POST, LOCKING | 98 | |
| - | 1 | 1 | 1 | 455888-7 | SPACER, CRIMPER | 82 | |
| - | 1 | 1 | 1 | 1803607-3 | DOCUMENTATION PACKAGE | 71 | |
| - | 1 | 1 | 1 | 2119791-5 | DEPRESSOR, WIRE | 70 | |
| - | 1 | 1 | 1 | 2119943-1 | WASHER, SPACER | 69 | |
| - | 1 | 1 | 1 | 2119740-1 | TAG, IDENTIFICATION | 67 | |
| - | 2 | 2 | 2 | 2168078-1 | SCREW, DRIVE, RH, RoHS, 2 x .188 | 66 | |
| - | 1 | 1 | 1 | 5-18022-5 | SCR, HEX HD CAP, M4 X 6.0 | 59 | |
| - | 1 | 1 | 1 | 1338685-1 | PAWL, FEED | 56 | |
| - | 2 | 2 | 2 | 2-2168083-5 | SCR, SKT HD CAP, RoHS, M4 X 14 | 53 | |
| - | 1 | 1 | 1 | 1803382-1 | HOLD DOWN, SPRING LOADED | 50 | |
| 7 | - | - | 1 | 2 | 18023-9 | SCR, SKT HD CAP M4 X 6.0 | 49 |
| - | - | - | 1 | 1 | 2119652-1 | FEED CAM, PRE FEED | 48 |
| - | 1 | 1 | 1 | 1803602-1 | SCR, BHSC, RoHS (M8 X 25) | 41 | |
| - | 1 | 1 | 1 | 1752356-6 | SUPPORT, TERMINAL | 34 | |
| - | 2 | 2 | 2 | 2079383-5 | SCR, BHSC, RoHS (M4 X 20) | 33 | |
| - | 2 | 2 | 2 | 2-2844962-4 | SPACER, CYLINDRICAL, STRIP GUIDE | 30 | |
| - | 1 | 1 | 1 | 2844992-1 | ASSEMBLY, STRIP GUIDE | 29 | |
| - | 1 | 1 | 1 | 455888-5 | SPACER, CRIMPER | 28 | |
| - | 1 | 1 | 1 | 1320928-2 | STRIP GUIDE | 24 | |
| - | 1 | 1 | 1 | 2168083-2 | SCR, SKT HD CAP, RoHS, M4 X 8.0 | 21 | |
| - | 2 | 2 | 2 | 1-18028-2 | WASHER, FLAT, REG M4 | 20 | |
| - | 1 | 1 | 1 | 2119533-1 | STRIPPER, SIDE FEED | 19 | |
| 1 | - | 1 | 1 | 1 | 2119806-1 | INSERT, SHEAR | 13 |
| - | 1 | 1 | 1 | 3-22280-3 | SPRING, COMPRESSION | 12 | |
| - | 1 | 1 | 1 | 1-18023-1 | SCR, SKT HD CAP M4 X 10.0 | 11 | |
| 1 | - | 1 | 1 | 1 | 2119805-1 | SHEAR HOLDER, FRONT | 10 |
| 1 | - | 1 | 1 | 1 | 1803095-6 | FLOATING SHEAR, FRONT | 9 |
| 1 | 1 | 1 | 1 | 1 | 7-1633917-4 | ANVIL, COMBINATION | 8 |
| - | 1 | 1 | 1 | 1 | 240641-3 | SPACER | 7 |
| - | - | - | - | - | - | - | 6 |
| - | 1 | 1 | 1 | 1 | 2119757-4 | DEPRESSOR, SHEAR | 5 |
| - | 1 | 1 | 1 | 1 | 238011-9 | BLOCK, CRIMPER SPACER | 4 |
| 1 | 1 | 1 | 1 | 1 | 3-1633962-0 | CRIMPER, INSULATION F PREMIUM | 3 |
| - | - | - | - | - | - | - | 2 |
| 1 | 1 | 1 | 1 | 1 | 3-1633860-8 | CRIMPER, WIRE | 1 |
| - | 77 | - | 42 | - | 22 | - | 21 |

| DIMENSIONS: | | TOLERANCES UNLESS OTHERWISE SPECIFIED: | | APPLICATOR DATA | |
|-------------|---------|--|---------|-----------------|---------|
| mm | 0 PLC ± | 1 PLC ± | 2 PLC ± | 3 PLC ± | 4 PLC ± |
| | ANGLES | FINISH | | | |
| MATERIAL | | WEIGHT | | SCALE | |
| | | | | 1:2 | |

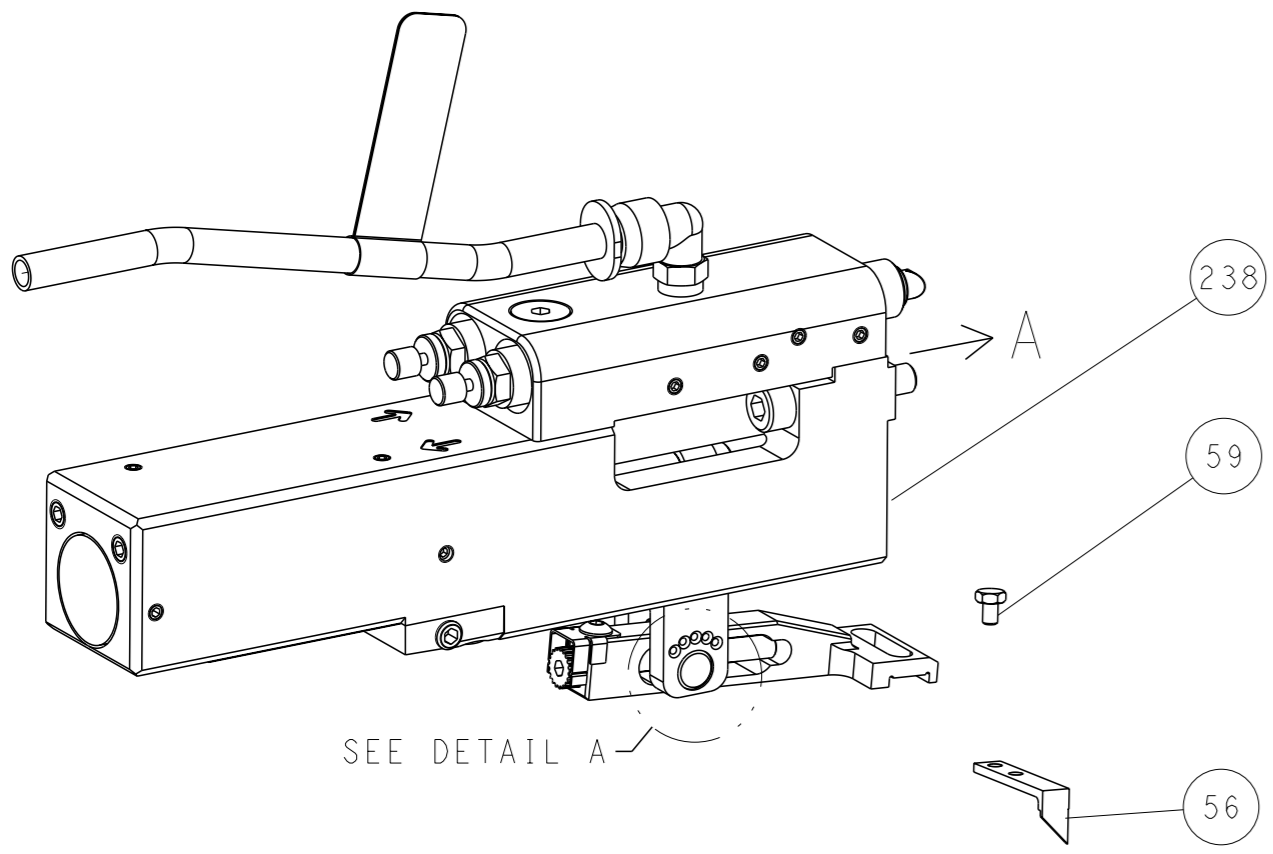
| OWN | CHK | DATE | NAME |
|--|-----------|------------|------------------------------|
| L. HUANG | L. ZHANG | 28DEC2017 | L. ZHANG |
| TE Connectivity | | | Harrisburg, PA 17105-3608 |
| Ocean Side Feed Applicator | | | |
| SIZE | CAGE CODE | DRAWING NO | RESTRICTED TO |
| A1 | 00779 | 2837039 | - |
| Customer Accessible Production Drawing | | | SCALE 1:2 SHEET 3 OF 4 REV C |

| LOC | | DIST | | REVISIONS | | | |
|-----|----|------|-----|-------------|------|-----|------|
| A | 66 | P | LYR | DESCRIPTION | DATE | OWN | APVD |
| | | - | | SEE SHEET 1 | - | - | - |

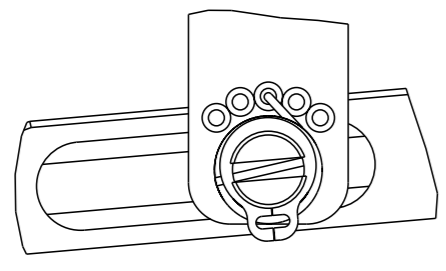
FEED TYPE MECHANICAL



PNEUMATIC

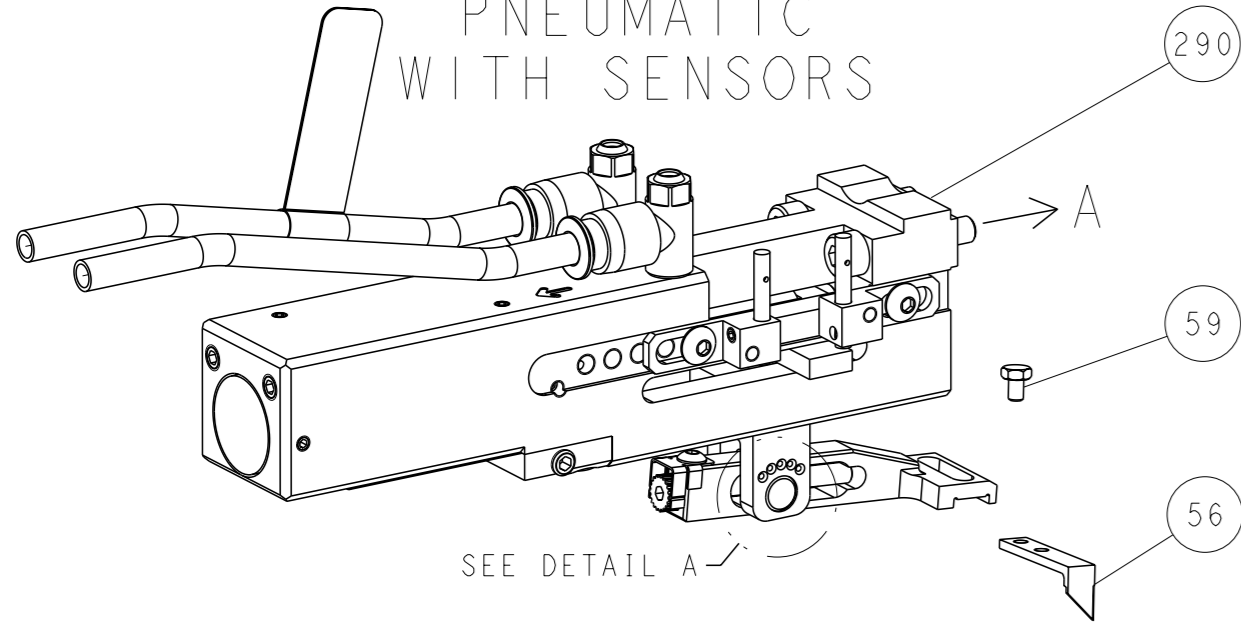


FEED SPRING SETTING POSITION (SHOWN FROM REAR SIDE)



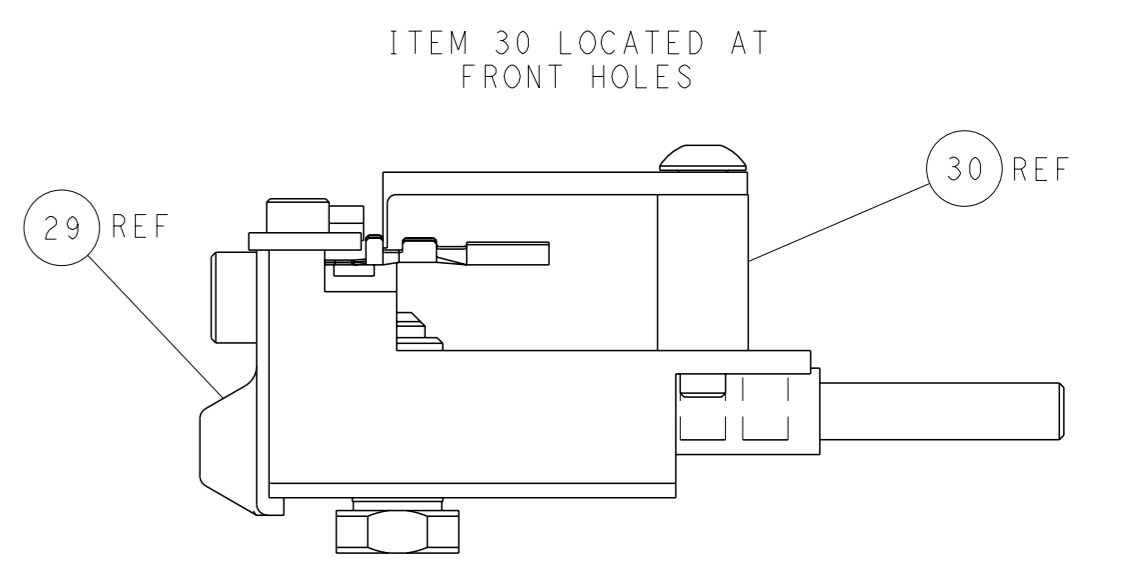
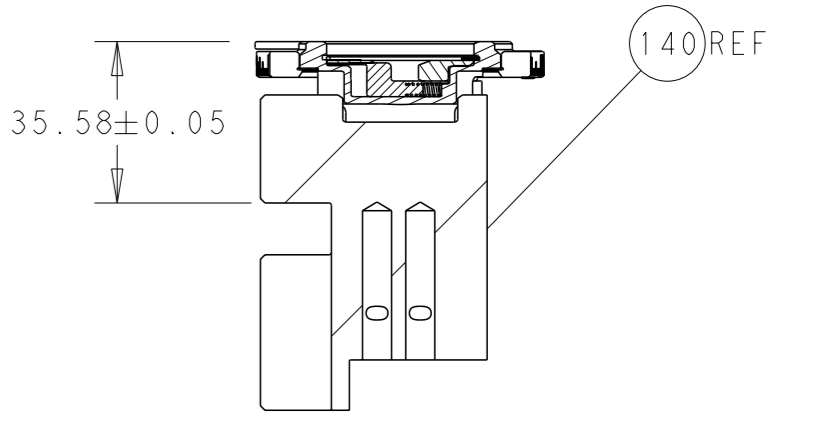
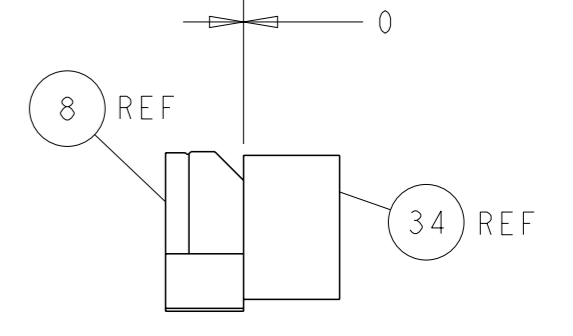
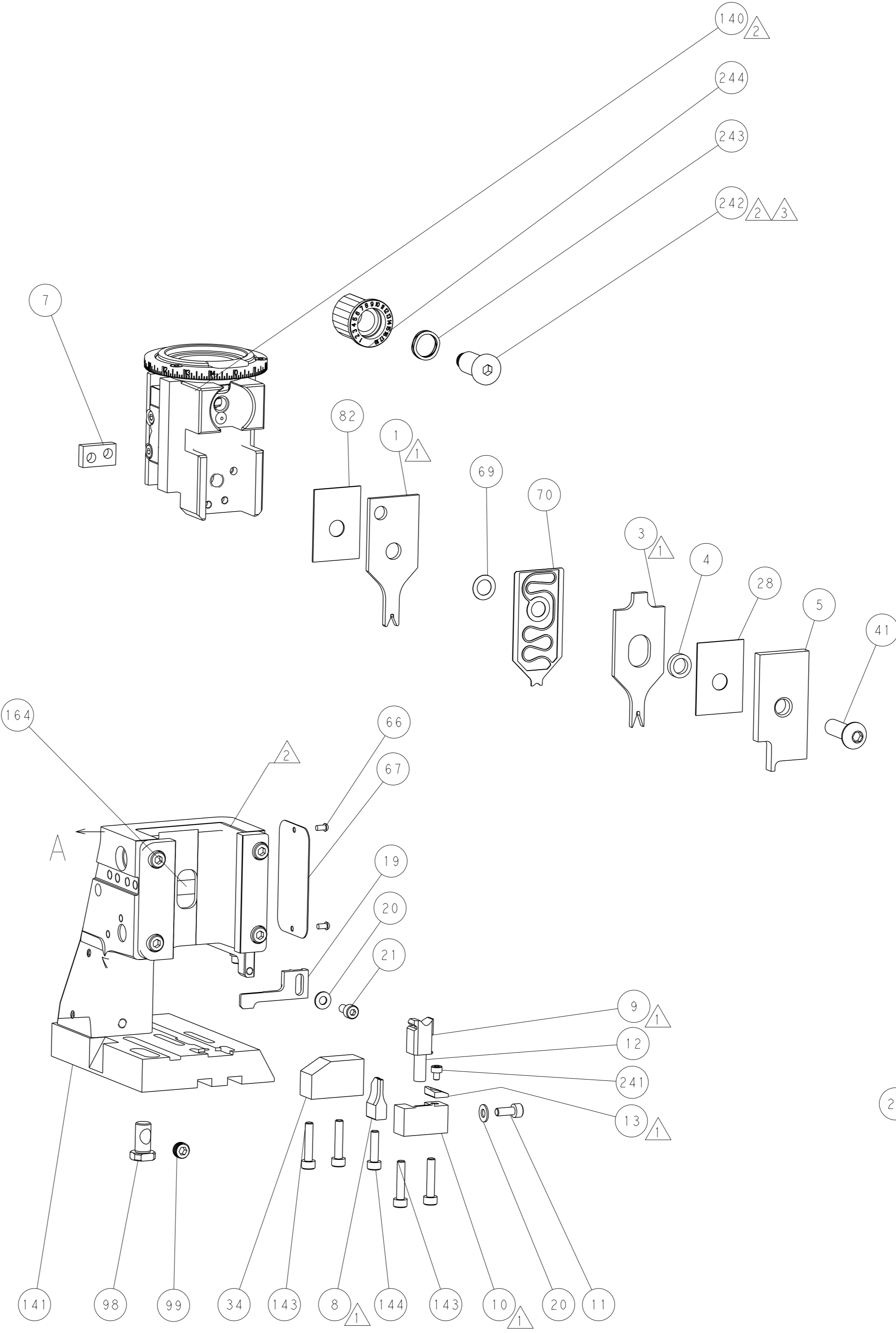
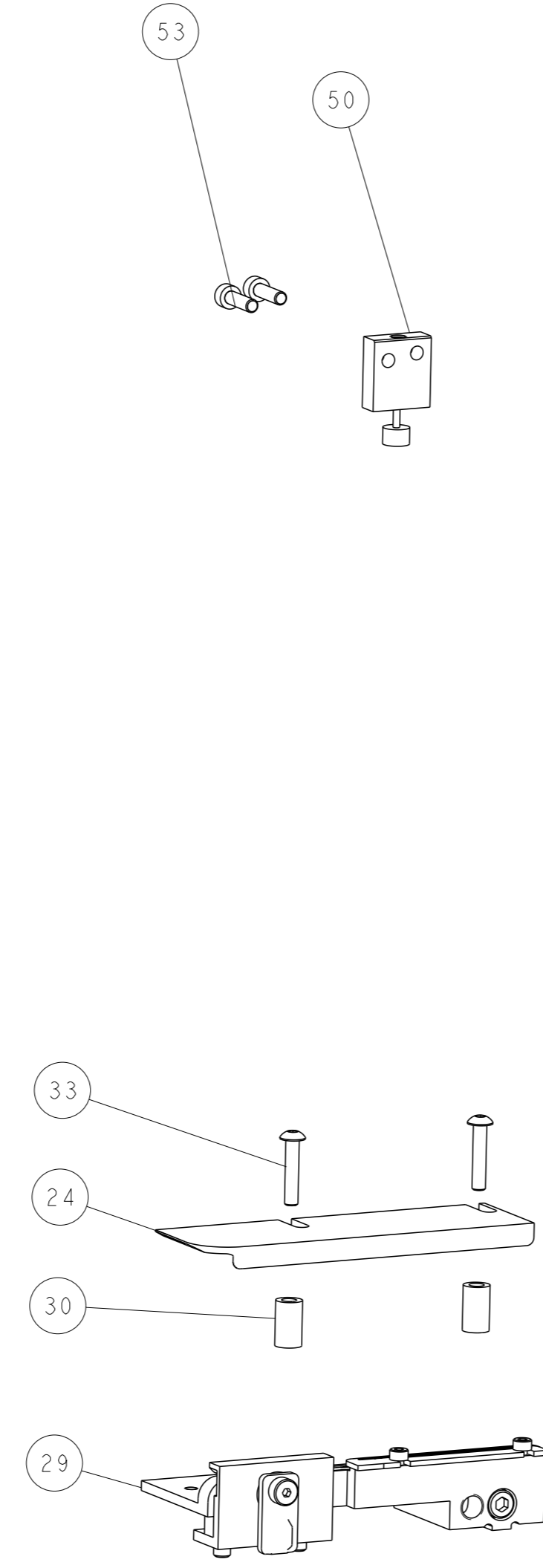
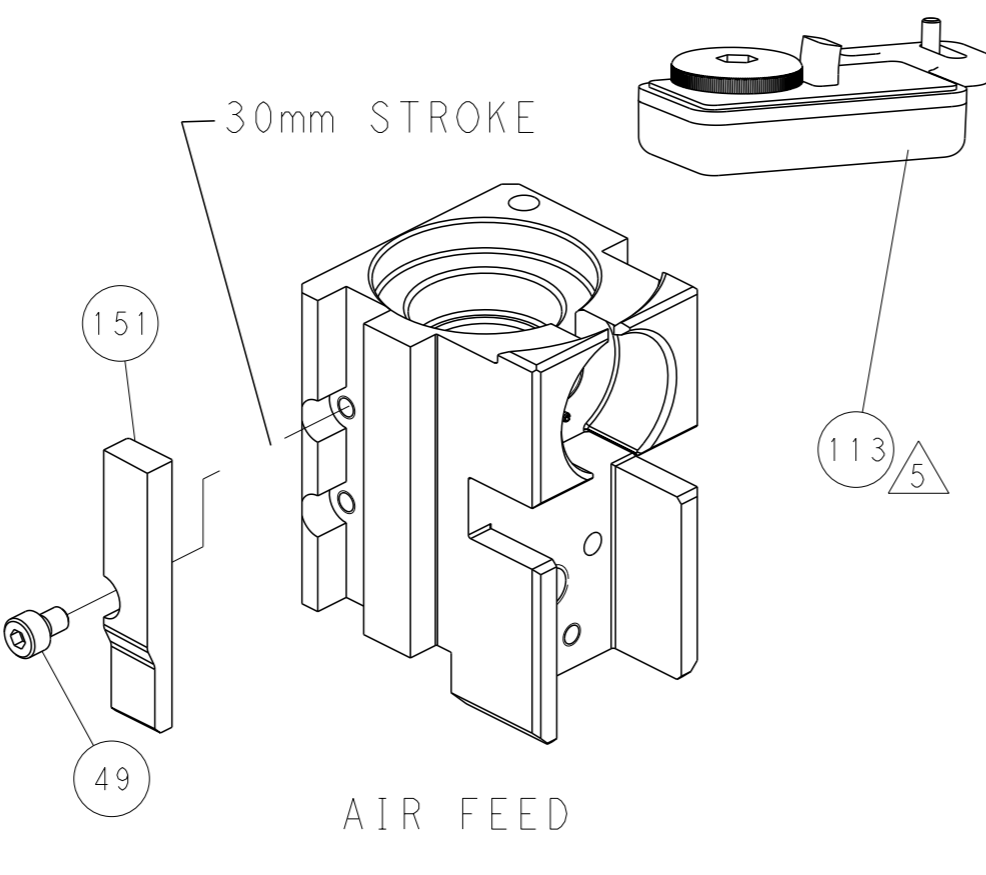
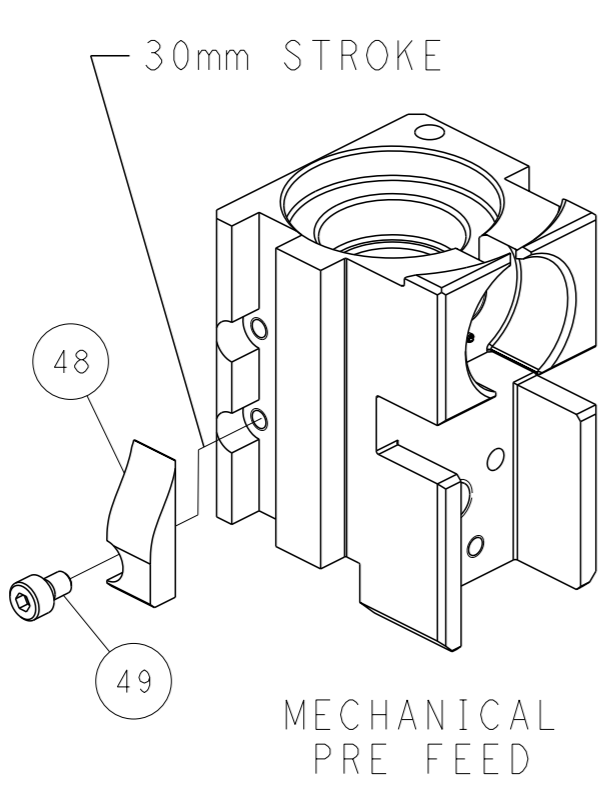
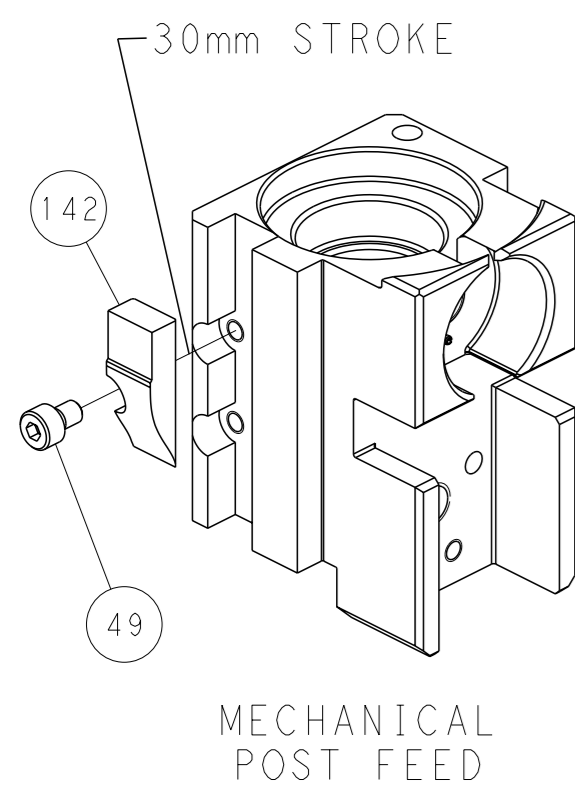
DETAIL A

DOUBLE ACTING PNEUMATIC WITH SENSORS



SEE DETAIL A

CAM POSITIONS



PACIFIC VERSION
 Shown on sheets 3 of 4 & 4 of 4
 (Atlantic version shown on sheets 1 of 4 & 2 of 4)

| | | | |
|--|---|--|--|
| <small>THIS DRAWING IS A CONTROLLED DOCUMENT FOR TYCO ELECTRONICS CORPORATION. IT IS SUBJECT TO CHANGE AND THE CONTROLLING ENGINEERING ORGANIZATION SHOULD BE CONTACTED FOR THE LATEST REVISION.</small> | | OWN: H. HUANG 28DEC2017 CHK: L. ZHANG 28DEC2017 APVD: L. ZHANG 28DEC2017 | NAME: TE Connectivity Harrisburg, PA 17105-3608 |
| DIMENSIONS: mm TOLERANCES UNLESS OTHERWISE SPECIFIED: 0 PLC ± 1 PLC ± 2 PLC ± 3 PLC ± 4 PLC ± ANGLES FINISH ± | APPLICATION SPEC PRODUCT SPEC RESTRICTED TO | SIZE: A1 CAGE CODE: 00779 DRAWING NO: C=2837039 | SCALE: 1:2 SHEET: 4 of 4 REV: C |
| MATERIAL: | | WEIGHT: | Customer Accessible Production Drawing |