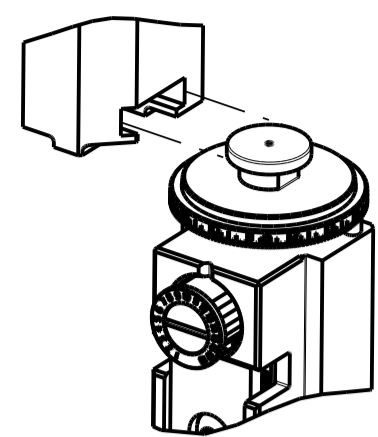


| PART NUMBER | REVISION | DESCRIPTION | FEED TYPE |
|-------------|----------|---------------------------------|-----------|
| 2837059-2 | C | FINE CRIMP HEIGHT ADJUST | PNEUMATIC |
| 7-2837059-2 | C | PNEUMATIC AND CRIMP TOOLING KIT | PNEUMATIC |
| 7-2837059-7 | A | CRIMP TOOLING KIT | - |

ATLANTIC VERSION TERMINATOR INTERFACE ADAPTER

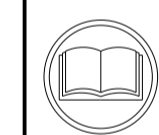


| APPLICATOR DATA | | |
|-----------------|----------------|------|
| CRIMP | SIZE | TYPE |
| WIRE | 1.58 mm [.062] | F |
| INSUL | 2.03 mm [.080] | F |

APPLICATOR INSTRUCTIONS 408-35042

| | |
|--|--|
| TERMINAL DATA: DELPHI TERMINAL DELPHI CRIMP SPECIFICATION | |
| TERMINAL NAME: RELAY TERMINAL | |
| WIRE STRIP LENGTH 4.23-4.99 mm [.167-.197 IN] | TERMINAL INSULATION DIAMETER RANGE Ø1.20-1.40 mm [.047-.055 IN] |
| TERMINAL APPLICATION SPECIFICATION 15344765 Rev 3/14/06 | |
| TERMINALS APPLIED | |
| TE TERMINAL 3311058-1 | DELPHI TERMINAL 15344765 |

| WIRE SIZE | CRIMP HEIGHT mm [INCH] | CRIMP HEIGHT REFERENCE SETTING |
|---------------------|----------------------------|--------------------------------|
| 0.35mm ² | 1.20+/-0.03 [.047+/- .001] | 5.2 |



- RECOMMENDED SPARE PARTS
- REFER TO SUPPLIED INSTRUCTION SHEET FOR CLEANING, LUBRICATION AND STORAGE OF APPLICATOR.
- APPLY PART NUMBER 2-23419-6 LOCTITE TO THREADS OF ITEM 242.
- CRIMP HEIGHT REFERENCE SETTING WAS THE SETTING USED WHEN THE APPLICATOR WAS QUALIFIED AT THE FACTORY. ADJUSTMENT MAY BE NECESSARY WHEN RUNNING APPLICATOR IN THE FIELD.
- TERMINAL PITCH NOT COMPATIBLE WITH MECHANICAL FEED.
- UNLESS SPECIFIED OTHERWISE TORQUE VALUES SHALL BE USED PER DOCUMENT, 101-35000.

***WARNING**
ON INSTALLATION, SET WIRE DISC TO CRIMP HEIGHT REFERENCE SETTING FOR LARGEST WIRE SIZE. CRIMP HEIGHT REFERENCE SETTINGS GREATER THAN THE VALUE SHOWN MAY CAUSE DAMAGE TO THE CRIMP TOOLING, REFER TO THE INSTRUCTION SHEET FOR PROPER SETUP AND ADJUSTMENTS.

| LOC | DIST | REVISIONS | | | | |
|-----|------|-----------|---------------|-----------|-----|----|
| A | 66 | REV | DATE | BY | CHK | |
| | | A | RELEASED | 02MAR2018 | KH | CT |
| | | B | ECR-19-001298 | 25JAN2019 | FJ | YY |
| | | C | ECR-21-000566 | 17JAN2021 | TB | RK |
| | | C1 | ECR-21-006043 | 04JUN2021 | LJ | YY |

| | | | | | |
|---|-----|-----|-------------|-------------------------------------|---------|
| - | 1 | 1 | 2119641-1 | FEED CAM, AIR FEED | 248 |
| - | 1 | 1 | 2119082-5 | CAM, SNAIL, INSULATION ADJUSTMENT | 244 |
| - | 1 | 1 | 2079764-1 | WASHER, WAVE SPRING, CREST-TO-CREST | 243 |
| - | 1 | 1 | 2119083-1 | RETAINER, INSULATION DIAL | 242 |
| - | 1 | 1 | 7-18023-7 | SCR, SKT HD CAP M3 X 4.0 | 241 |
| - | 1 | 1 | 2844940-2 | AIR FEED MODULE | 238 |
| - | REF | REF | 994970-2 | COUNTER, MAGNETIC | 164 |
| - | 1 | 1 | 2844908-1 | SCREW, LOCKING | 99 |
| - | 1 | 1 | 2844907-1 | POST, LOCKING | 98 |
| - | 1 | 1 | 455888-6 | SPACER, CRIMPER | 82 |
| - | 1 | 1 | 1803607-3 | DOCUMENTATION PACKAGE | 71 |
| - | 1 | 1 | 2119791-9 | DEPRESSOR, WIRE | 70 |
| - | 1 | 1 | 2119740-1 | TAG, IDENTIFICATION | 67 |
| - | 2 | 2 | 2168078-1 | SCREW, DRIVE, RH, RoHS, 2 x .188 | 66 |
| - | 1 | 1 | 2168083-2 | SCR, SKT HD CAP, RoHS, M4 X 8.0 | 60 |
| - | 1 | 1 | 5-18022-5 | SCR, HEX HD CAP, M4 X 6.0 | 59 |
| - | 1 | 1 | 1338685-1 | PAWL, FEED | 56 |
| - | 4 | 4 | 2168083-3 | SCR, SKT HD CAP, RoHS, M4 X 12.0 | 54 |
| - | 2 | 2 | 1-2168083-0 | SCR, SKT HD CAP, RoHS, M4 X 10 | 53 |
| - | 1 | 1 | 5018030-1 | NUT, HEX, REG, RoHS, M3 | 52 |
| - | 1 | 1 | 811242-5 | BUMPER, HOLD DOWN | 51 |
| - | 1 | 1 | 690753-2 | SPACER, TONKER | 50 |
| - | 1 | 1 | 18023-9 | SCR, SKT HD CAP M4 X 6.0 | 49 |
| - | 1 | 1 | 1803583-9 | APPLICATOR BASIC ASSEMBLY, SF | 46 |
| - | 1 | 1 | 1803515-1 | RAM ASSEMBLY, SF ATLANTIC | 44 |
| - | 1 | 1 | 1803602-1 | SCR, BHSC, RoHS (M8 X 25) | 41 |
| - | 1 | 1 | 3-1752356-3 | SUPPORT, TERMINAL | 34 |
| - | 2 | 2 | 2079383-5 | SCR, BHSC, RoHS (M4 X 20) | 33 |
| - | 2 | 2 | 2-2844962-6 | SPACER, CYLINDRICAL, STRIP GUIDE | 30 |
| - | 1 | 1 | 2844992-1 | ASSEMBLY, STRIP GUIDE | 29 |
| - | 1 | 1 | 1-455888-0 | SPACER, CRIMPER | 28 |
| - | 1 | 1 | 1320928-2 | STRIP GUIDE | 24 |
| - | 1 | 1 | 2168083-2 | SCR, SKT HD CAP, RoHS, M4 X 8.0 | 21 |
| - | 2 | 2 | 1-18028-2 | WASHER, FLAT, REG M4 | 20 |
| - | 1 | 1 | 2119533-1 | STRIPPER, SIDE FEED | 19 |
| - | 1 | 1 | 2119806-1 | INSERT, SHEAR | 13 |
| - | 1 | 1 | 3-22280-3 | SPRING, COMPRESSION | 12 |
| - | 1 | 1 | 1-356885-4 | STOP, SHEAR | 11 |
| - | 1 | 1 | 2119805-1 | SHEAR HOLDER, FRONT | 10 |
| - | 1 | 1 | 1803095-1 | FLOATING SHEAR, FRONT | 9 |
| - | 1 | 2 | 1803703-7 | ANVIL, COMBINATION | 8 |
| - | - | - | - | - | 7 |
| - | - | - | - | - | 6 |
| - | 1 | 1 | 2119757-6 | DEPRESSOR, SHEAR | 5 |
| - | 1 | 1 | 3-238011-3 | BLOCK, CRIMPER SPACER | 4 |
| - | 1 | 2 | 5-1633961-6 | CRIMPER, INSULATION F PREMIUM | 3 |
| - | 1 | 1 | 1-455888-6 | SPACER, CRIMPER | 2 |
| - | 1 | 2 | 1-456403-3 | CRIMPER, WIRE PREMIUM | 1 |
| - | 77 | 72 | -2 | PART NO | ITEM NO |

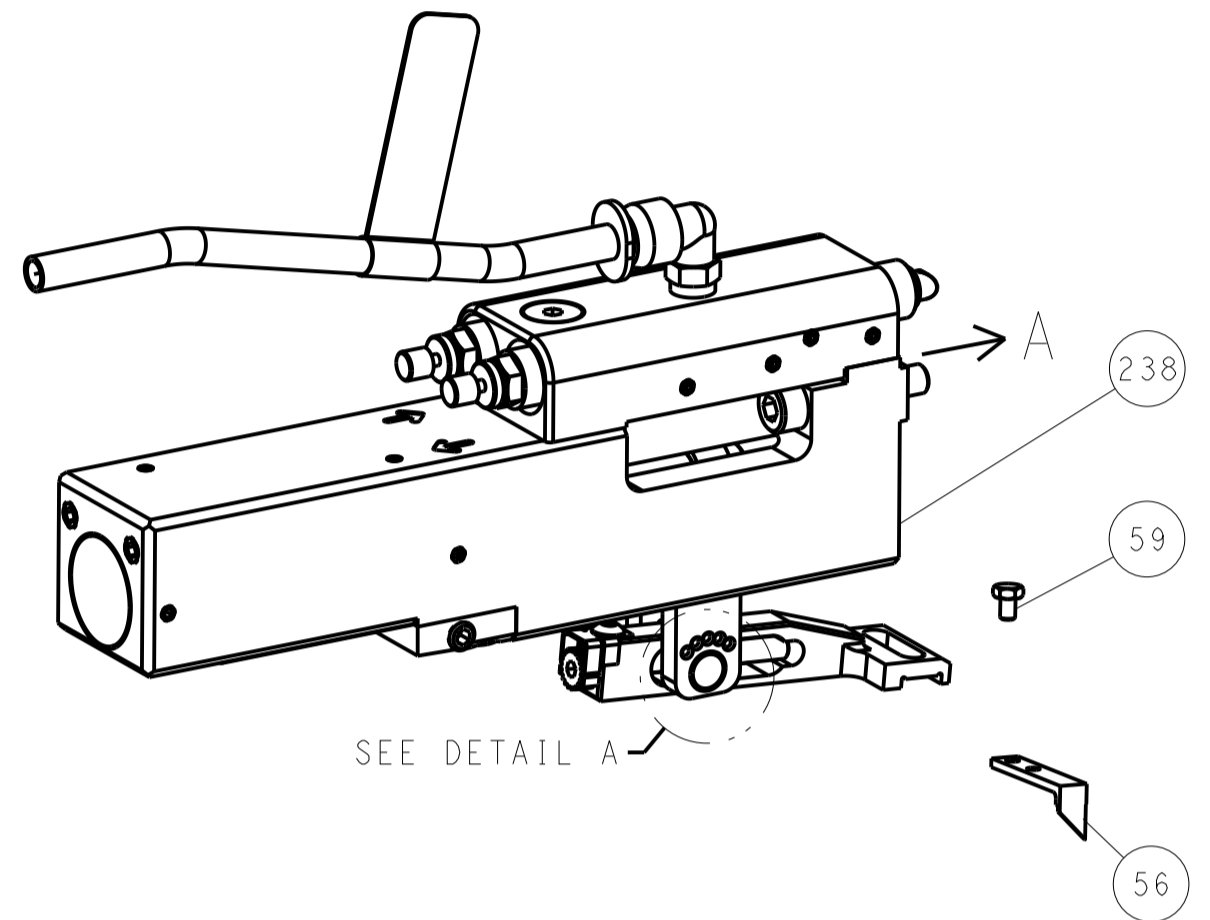
ATLANTIC VERSION
Shown on sheets 1 of 4 & 2 of 4
(Pacific version shown on sheets 3 of 4 & 4 of 4)

| | | | | | | | | | | | |
|--|--|--|--|-------------------------|--|-------------------------|--|--------------------------|--|----------------------------------|--|
| DIMENSIONS: mm | | TOLERANCES UNLESS OTHERWISE SPECIFIED: | | DWG: K. HUANG 18JAN2018 | | CHK: K. HUANG 18JAN2018 | | APVD: J. ZHANG 18JAN2018 | | NAME: Ocean Side Feed Applicator | |
| 0 PLC ± | | 1 PLC ± | | 2 PLC ± | | 3 PLC ± | | 4 PLC ± | | SIZE: A1 | |
| MATERIAL: - | | FINISH: - | | WEIGHT: - | | CAGE CODE: 00779 | | DRAWING NO: 2837059 | | RESTRICTED TO: - | |
| Customer Accessible Production Drawing | | | | | | | | | | SCALE: 1:2 SHEET 1 OF 4 REV: C1 | |

| LOC | DIST | REV | DATE | BY | APPV |
|-----|------|-----|------|----|------|
| A | 66 | | | | |
| | | | | | |
| | | | | | |

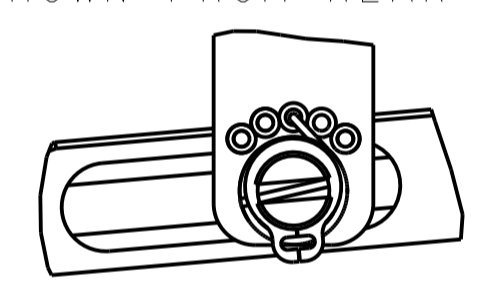
FEED TYPE

PNEUMATIC



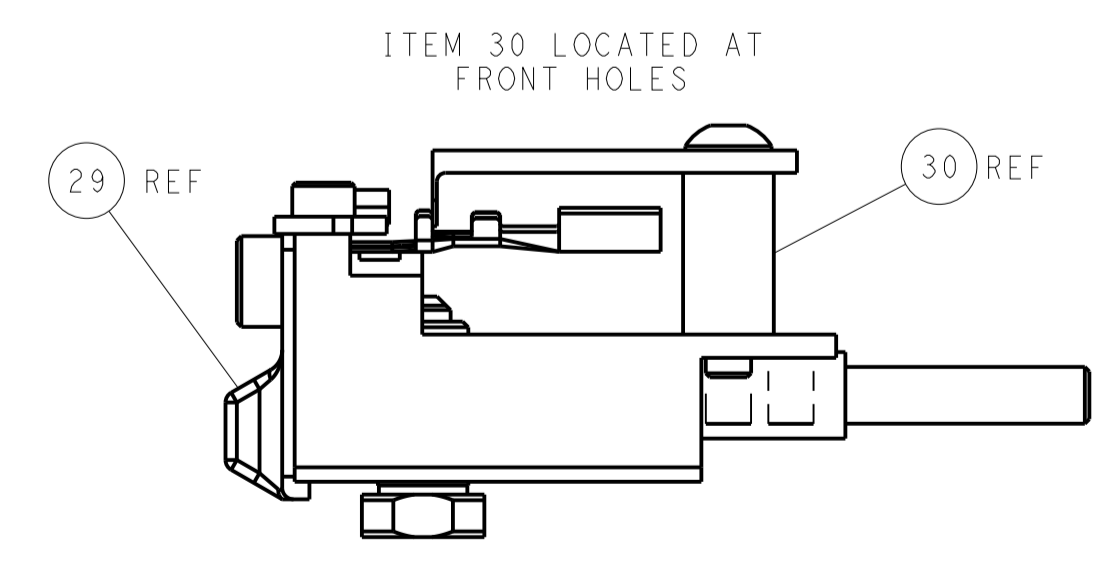
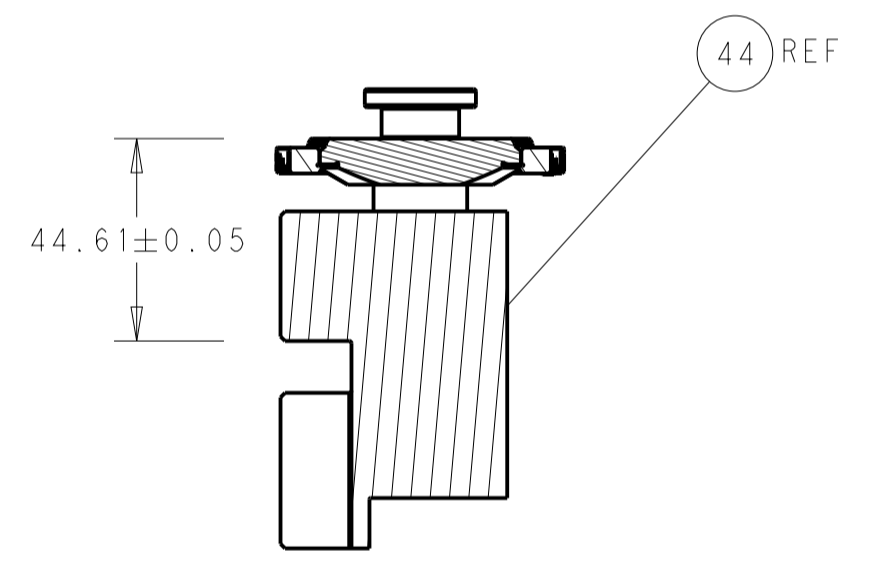
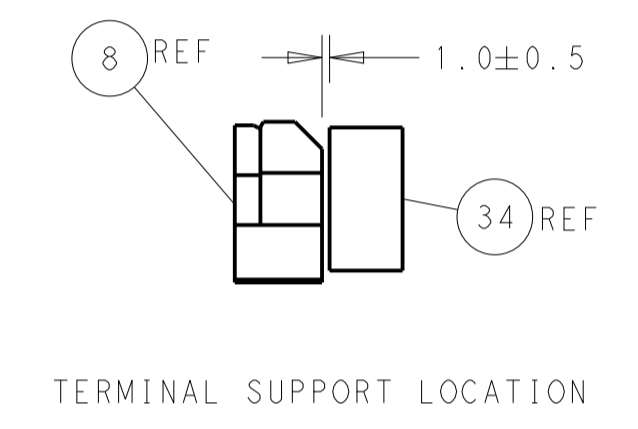
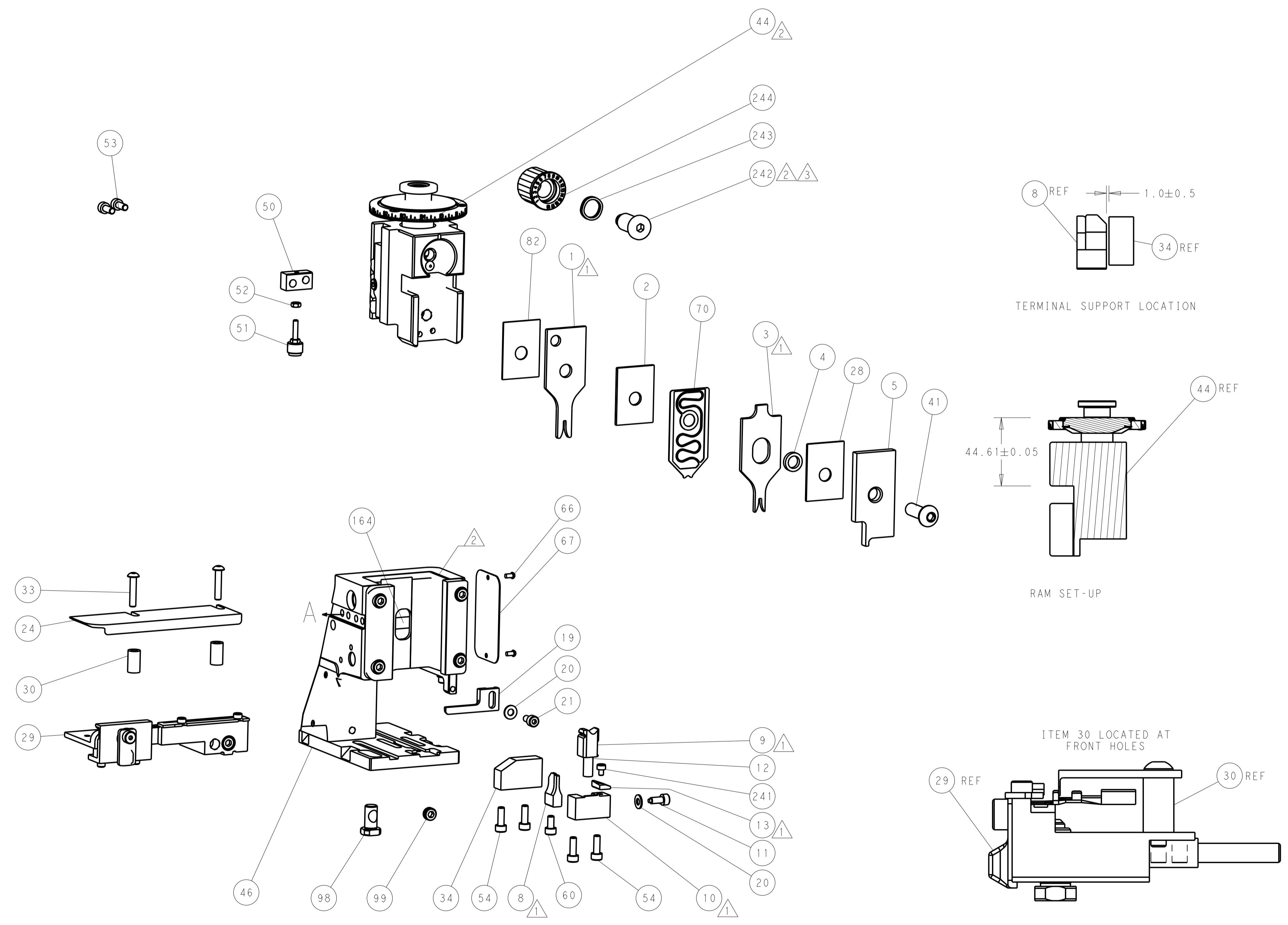
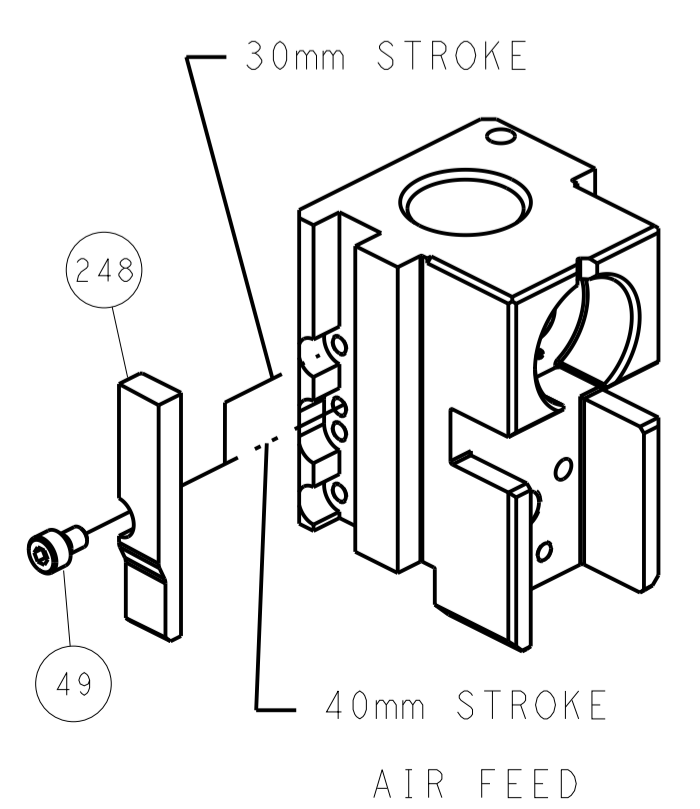
SEE DETAIL A

FEED SPRING SETTING POSITION (SHOWN FROM REAR SIDE)



DETAIL A

CAM POSITION

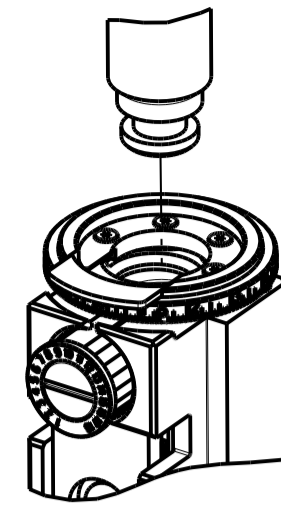


ATLANTIC VERSION
 Shown on sheets 1 of 4 & 2 of 4
 (Pacific version shown on sheets 3 of 4 & 4 of 4)

| | | | | | | | |
|--|--|---|--|--|--|--|--|
| DIMENSIONS: mm | | TOLERANCES UNLESS OTHERWISE SPECIFIED: 0 PLC ± 1 PLC ± 2 PLC ± 3 PLC ± 4 PLC ± ANGLES ± | | DWN: K. HUANG 18JAN2018 CHK: K. HUANG 18JAN2018 APVD: L. ZHANG 18JAN2018 | | TE Connectivity Harrisburg, PA 17105-3608 | |
| MATERIAL: | | FINISH: | | PRODUCT SPEC: | | NAME: Ocean Side Feed Applicator | |
| WEIGHT: | | SCALE: 1:2 | | SIZE: A1 CAGE CODE: 00779 DRAWING NO: 2837059 | | RESTRICTED TO: | |
| CUSTOMER ACCESSIBLE PRODUCTION DRAWING | | SHEET 2 OF 4 | | REV C1 | | SHEETS 3 & 4 ARE NOT REQUIRED FOR ATLANTIC VERSION | |

| PART NUMBER | REVISION | DESCRIPTION | FEED TYPE |
|-------------|----------|--------------------------|-----------|
| 2-2837059-2 | C | FINE CRIMP HEIGHT ADJUST | PNEUMATIC |
| 7-2837059-7 | A | CRIMP TOOLING KIT | - |

PACIFIC VERSION TERMINATOR
INTERFACE ADAPTER



| APPLICATOR DATA | | |
|-----------------|----------------|------|
| CRIMP | SIZE | TYPE |
| WIRE | 1.58 mm [.062] | F |
| INSUL | 2.03 mm [.080] | F |

APPLICATOR INSTRUCTIONS
408-35042

| | |
|--|--|
| TERMINAL DATA: DELPHI TERMINAL DELPHI CRIMP SPECIFICATION | |
| TERMINAL NAME: RELAY TERMINAL | |
| WIRE STRIP LENGTH 4.23-4.99 mm [1.67-.197 IN] | TERMINAL INSULATION DIAMETER RANGE Ø1.20-1.40 mm [.047-.055 IN] |
| TERMINAL APPLICATION SPECIFICATION 15344765 Rev 3/14/06 | |
| TERMINALS APPLIED | |
| TE TERMINAL 3311058-1 | DELPHI TERMINAL 15344765 |

| WIRE SIZE | CRIMP HEIGHT mm [INCH] | CRIMP HEIGHT REFERENCE SETTING |
|-----------|----------------------------|--------------------------------|
| 0.35mm2 | 1.20+/-0.03 [.047+/-0.001] | 5.2 |



- 1. RECOMMENDED SPARE PARTS
- 2. REFER TO SUPPLIED INSTRUCTION SHEET FOR CLEANING, LUBRICATION AND STORAGE OF APPLICATOR.
- 3. APPLY PART NUMBER 2-23419-6 LOCTITE TO THREADS OF ITEM 242.
- 4. CRIMP HEIGHT REFERENCE SETTING WAS THE SETTING USED WHEN THE APPLICATOR WAS QUALIFIED AT THE FACTORY. ADJUSTMENT MAY BE NECESSARY WHEN RUNNING APPLICATOR IN THE FIELD.
- 5. TERMINAL PITCH NOT COMPATIBLE WITH MECHANICAL FEED.
- 6. UNLESS SPECIFIED OTHERWISE TORQUE VALUES SHALL BE USED PER DOCUMENT, 101-35000.

| ENTRY LEVEL APPLICATOR | | ITEM SUBSTITUTION LIST | | |
|------------------------|-------------|------------------------|---------------------|------------------------|
| PART NUMBER | SAME AS | ITEM | ITEM DESCRIPTION | SUBSTITUTE PART NUMBER |
| 8-2837059-1 | 2837059-1 | 1 | WIRE CRIMPER | 1-1803547-3 |
| 8-2837059-2 | 2837059-2 | 3 | INSULATION CRIMPER | 5-1803598-6 |
| 9-2837059-1 | 2-2837059-1 | 46 | BASIC SUB -ASSEMBLY | 1803940-9 |
| 9-2837059-2 | 2-2837059-2 | 141 | BASIC SUB -ASSEMBLY | 1-1803940-0 |
| | | | LUBRICATOR | DELETE |

***WARNING**
ON INSTALLATION, SET WIRE DISC TO CRIMP HEIGHT REFERENCE SETTING FOR LARGEST WIRE SIZE. CRIMP HEIGHT REFERENCE SETTINGS GREATER THAN THE VALUE SHOWN MAY CAUSE DAMAGE TO THE CRIMP TOOLING, REFER TO THE INSTRUCTION SHEET FOR PROPER SETUP AND ADJUSTMENTS.

PACIFIC VERSION
Shown on sheets 3 of 4 & 4 of 4
(Atlantic version shown on sheets 1 of 4 & 2 of 4)

| LOC | DIST | REV | DATE | BY | APPV |
|-----|------|-----|------|----|------|
| A | 66 | | | | |

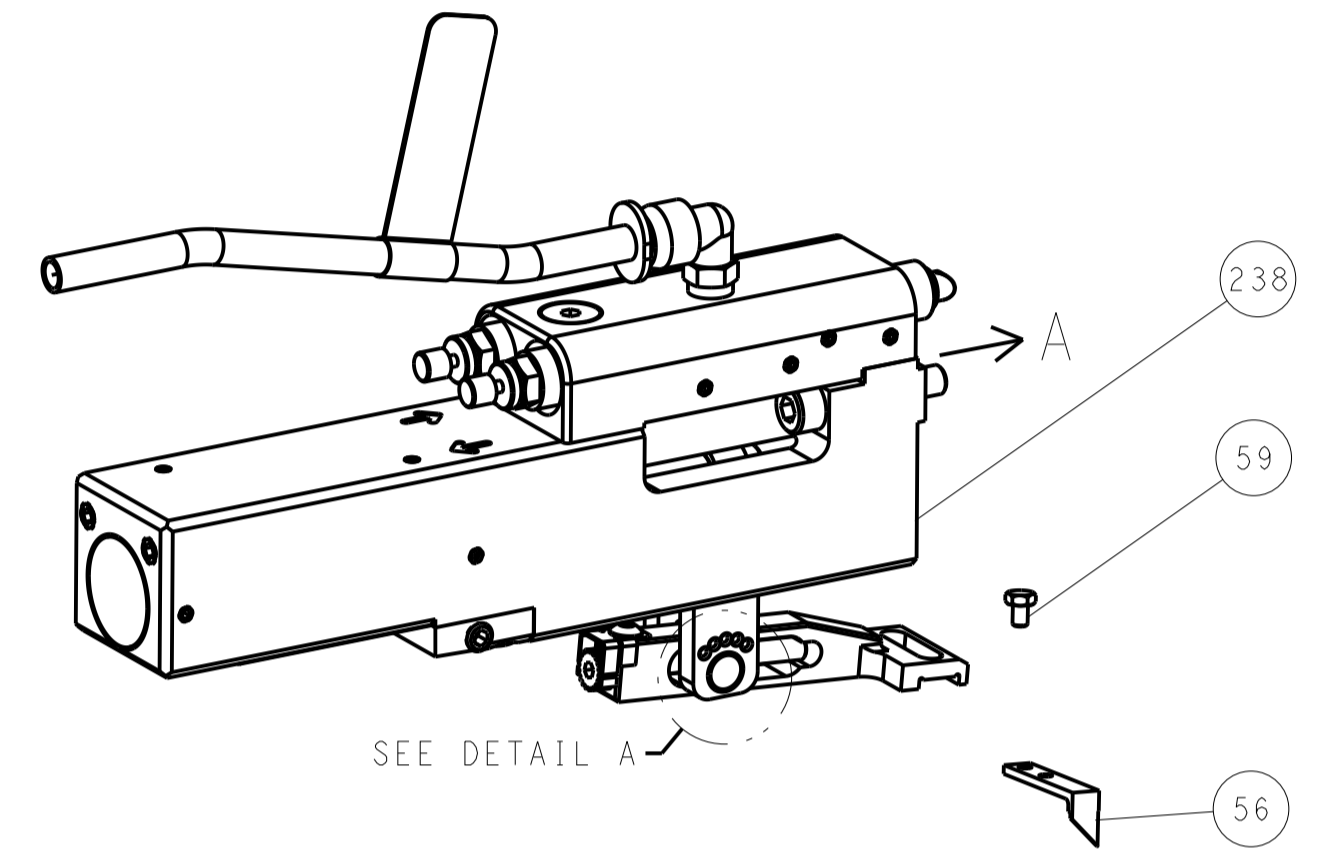
| REV | DATE | BY | APPV | DESCRIPTION | DATE | BY | APPV |
|-----|------|-------------|------|-------------------------------------|------|----|------|
| - | 1 | 2119082-5 | | CAM, SNAIL, INSULATION ADJUSTMENT | | | 244 |
| - | 1 | 2079764-1 | | WASHER, WAVE SPRING, CREST-TO-CREST | | | 243 |
| - | 1 | 2119083-1 | | RETAINER, INSULATION DIAL | | | 242 |
| - | 1 | 7-18023-7 | | SCR, SKT HD CAP M3 X 4.0 | | | 241 |
| - | 1 | 2844940-2 | | AIR FEED MODULE | | | 238 |
| - | REF | 994970-2 | | COUNTER, MAGNETIC | | | 164 |
| - | 1 | 2119641-2 | | FEED CAM, AIR FEED | | | 151 |
| - | 1 | 2168083-8 | | SCR, SKT HD CAP, RoHS, M4 X 16 | | | 144 |
| - | 4 | 2168083-9 | | SCR, SKT HD CAP, RoHS, M4 X 20 | | | 143 |
| - | 1 | 1-1803583-0 | | APPLICATOR BASIC ASSEMBLY, SF | | | 141 |
| - | 1 | 1803516-1 | | RAM ASSEMBLY, SF PACIFIC | | | 140 |
| - | 1 | 2844908-1 | | SCREW, LOCKING | | | 99 |
| - | 1 | 2844907-1 | | POST, LOCKING | | | 98 |
| - | 1 | 455888-6 | | SPACER, CRIMPER | | | 82 |
| - | 1 | 1803607-3 | | DOCUMENTATION PACKAGE | | | 71 |
| - | 1 | 2119791-9 | | DEPRESSOR, WIRE | | | 70 |
| - | 1 | 2119740-1 | | TAG, IDENTIFICATION | | | 67 |
| - | 2 | 2168078-1 | | SCREW, DRIVE, RH, RoHS, 2 x .188 | | | 66 |
| - | 1 | 5-18022-5 | | SCR, HEX HD CAP, M4 X 6.0 | | | 59 |
| - | 1 | 1338685-1 | | PAWL, FEED | | | 56 |
| - | 2 | 1-2168083-0 | | SCR, SKT HD CAP, RoHS, M4 X 10 | | | 53 |
| - | 1 | 5018030-1 | | NUT, HEX, REG, RoHS, M3 | | | 52 |
| - | 1 | 811242-5 | | BUMPER, HOLD DOWN | | | 51 |
| - | 1 | 690753-2 | | SPACER, TONKER | | | 50 |
| - | 1 | 18023-9 | | SCR, SKT HD CAP M4 X 6.0 | | | 49 |
| - | 1 | 1803602-1 | | SCR, BHSC, RoHS (M8 X 25) | | | 41 |
| - | 1 | 3-1752356-3 | | SUPPORT, TERMINAL | | | 34 |
| - | 2 | 2079383-5 | | SCR, BHSC, RoHS (M4 X 20) | | | 33 |
| - | 2 | 2-2844962-6 | | SPACER, CYLINDRICAL, STRIP GUIDE | | | 30 |
| - | 1 | 2844992-1 | | ASSEMBLY, STRIP GUIDE | | | 29 |
| - | 1 | 1-455888-0 | | SPACER, CRIMPER | | | 28 |
| - | 1 | 1320928-2 | | STRIP GUIDE | | | 24 |
| - | 1 | 2168083-2 | | SCR, SKT HD CAP, RoHS, M4 X 8.0 | | | 21 |
| - | 2 | 1-18028-2 | | WASHER, FLAT, REG M4 | | | 20 |
| - | 1 | 2119533-1 | | STRIPPER, SIDE FEED | | | 19 |
| - | 1 | 2119806-1 | | INSERT, SHEAR | | | 13 |
| - | 1 | 3-22280-3 | | SPRING, COMPRESSION | | | 12 |
| - | 1 | 1-356885-4 | | STOP, SHEAR | | | 11 |
| - | 1 | 2119805-1 | | SHEAR HOLDER, FRONT | | | 10 |
| - | 1 | 1803095-1 | | FLOATING SHEAR, FRONT | | | 9 |
| - | 1 | 1803703-7 | | ANVIL, COMBINATION | | | 8 |
| - | - | - | | - | | | 7 |
| - | - | - | | - | | | 6 |
| - | 1 | 2119757-6 | | DEPRESSOR, SHEAR | | | 5 |
| - | 1 | 3-238011-3 | | BLOCK, CRIMPER SPACER | | | 4 |
| - | 1 | 5-1633961-6 | | CRIMPER, INSULATION F PREMIUM | | | 3 |
| - | 1 | 1-455888-6 | | SPACER, CRIMPER | | | 2 |
| - | 1 | 1-456403-3 | | CRIMPER, WIRE PREMIUM | | | 1 |

| | | | | | | | |
|--|--|---|--|--|--|---|--|
| DIMENSIONS: mm | | TOLERANCES UNLESS OTHERWISE SPECIFIED: 0 PLC ± 1 PLC ± 2 PLC ± 3 PLC ± 4 PLC ± ANGLES ± | | DWG: H. HUANG 18JAN2018 CHK: K. HUANG 18JAN2018 APVD: L. ZHANG 18JAN2018 | | TE Connectivity Harrisburg, PA 17105-3608 | |
| MATERIAL: - FINISH: - | | WEIGHT: - SCALE: 1:2 | | PRODUCT SPEC: - APPLICATION SPEC: - | | SIZE: A1 CAGE CODE: 00779 DRAWING NO: 2837059 | |
| Customer Accessible Production Drawing | | | | SHEET 3 OF 4 | | REV C1 | |

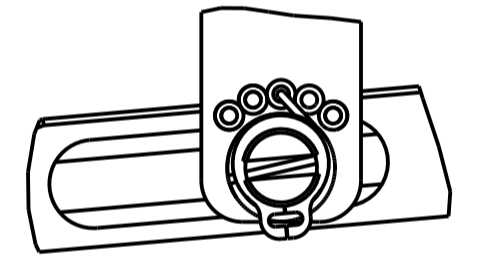
| LOC | | DIST | | REVISIONS | | | |
|-----|----|------|-----|-------------|------|-----|------|
| A | 66 | P | LTM | DESCRIPTION | DATE | DWN | APVD |
| | | - | | SEE SHEET 1 | | | |

FEED TYPE

PNEUMATIC

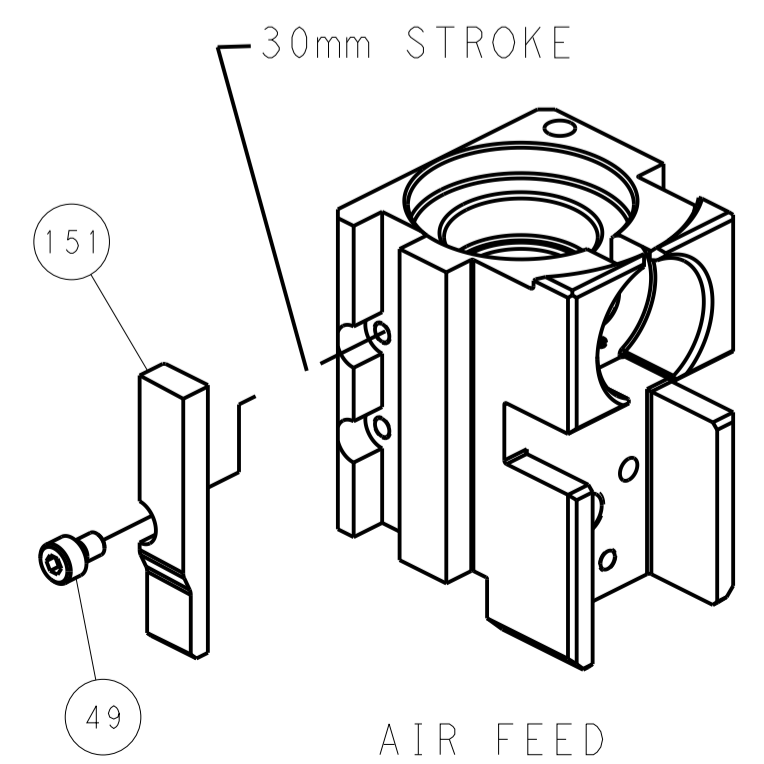


FEED SPRING SETTING POSITION (SHOWN FROM REAR SIDE)

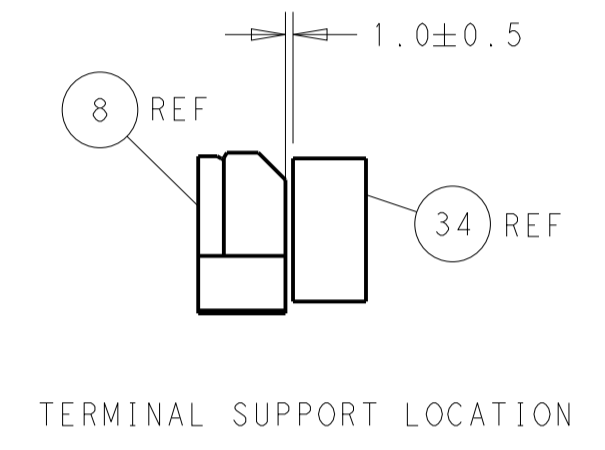
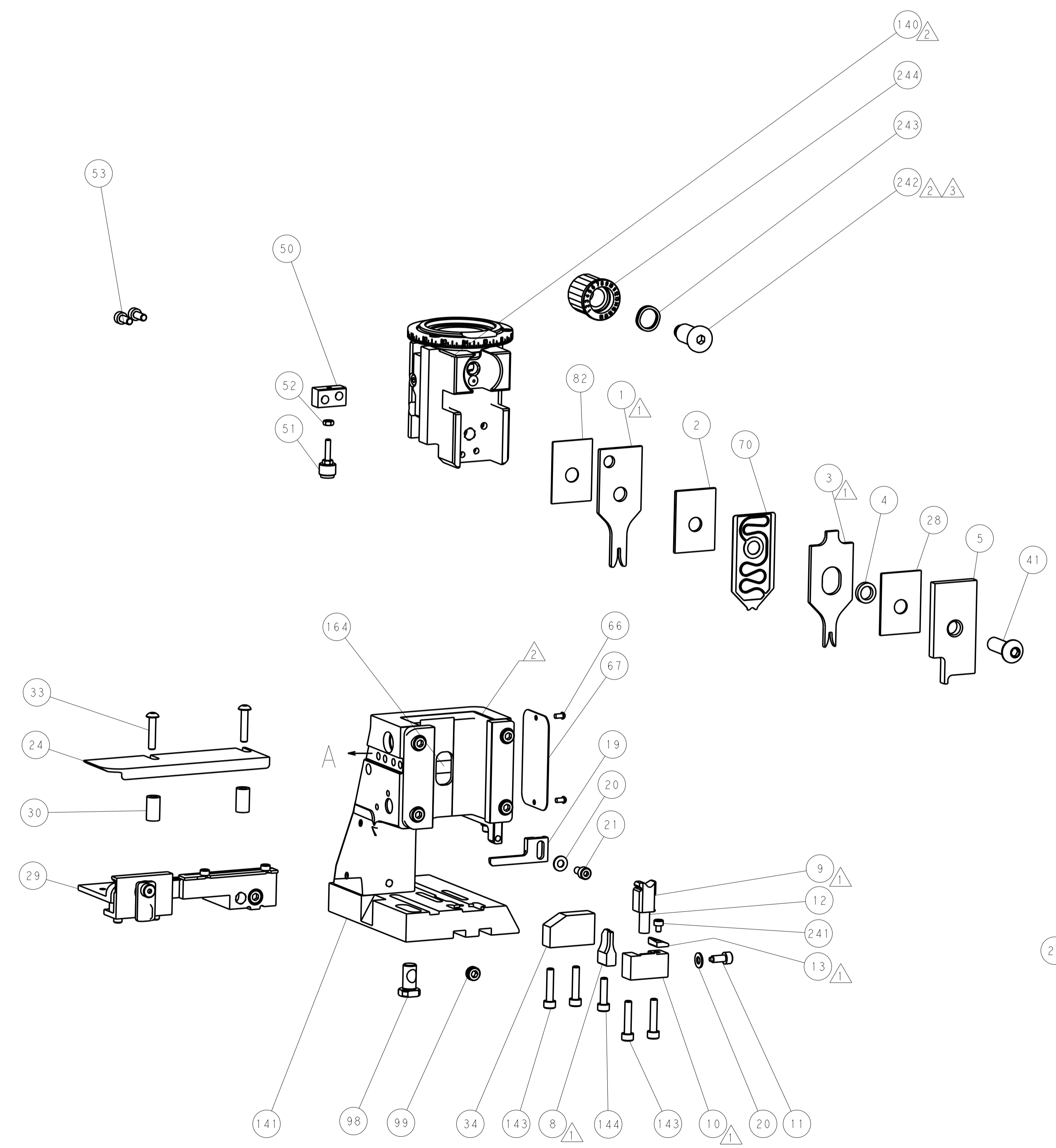


DETAIL A

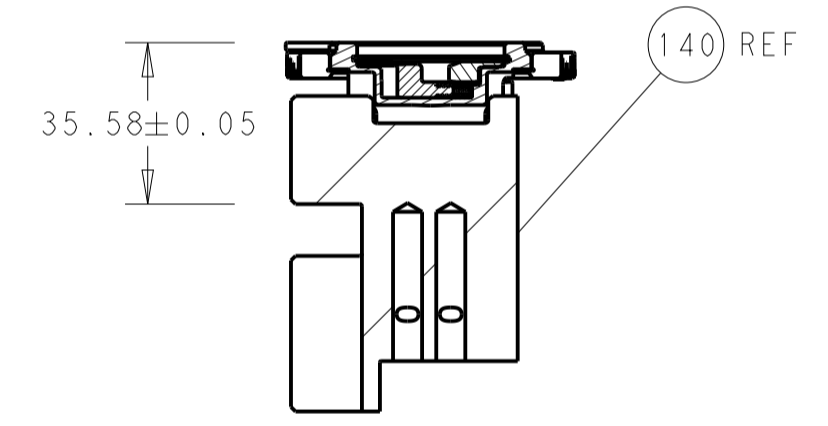
CAM POSITION



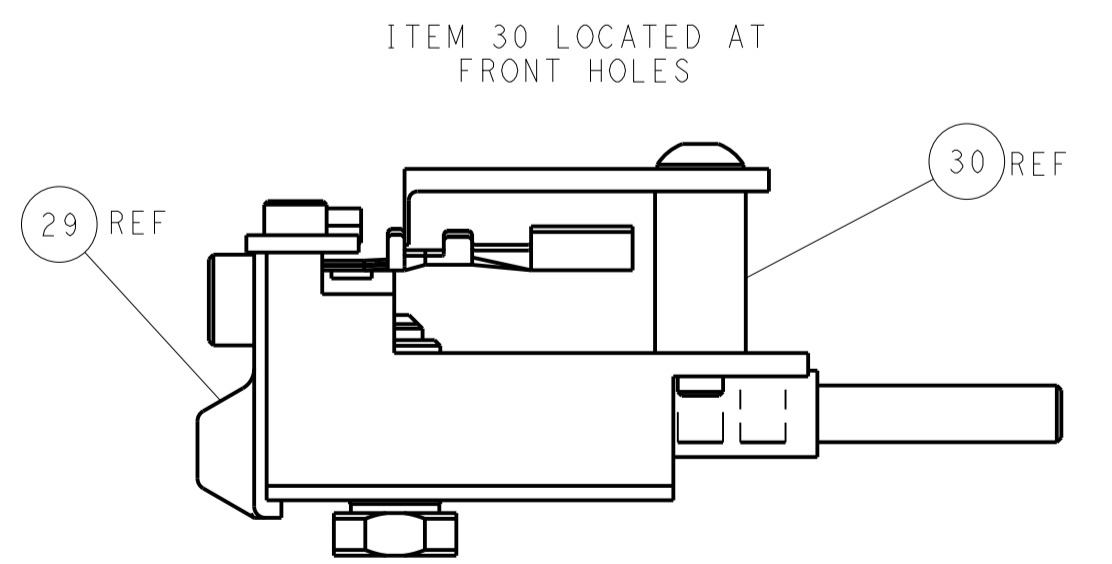
AIR FEED



TERMINAL SUPPORT LOCATION



RAM SET-UP



FEED TRACK POSITION GUIDE BY INSULATION BARREL

PACIFIC VERSION
 Shown on sheets 3 of 4 & 4 of 4
 (Atlantic version shown on sheets 1 of 4 & 2 of 4)

| | | | | | | | |
|-------------|---------|--|---------|--|---------|----------------------------------|--|
| DIMENSIONS: | | TOLERANCES UNLESS OTHERWISE SPECIFIED: | | DWN: K. HUANG 18JAN2018 | | TE Connectivity | |
| mm | 0 PLC ± | 1 PLC ± | 2 PLC ± | 3 PLC ± | 4 PLC ± | Harrisburg, PA 17105-3608 | |
| MATERIAL: | | FINISH: | | CHK: K. HUANG 18JAN2018 | | NAME: Ocean Side Feed Applicator | |
| | | | | APVD: L. ZHANG 18JAN2018 | | PRODUCT SPEC: | |
| | | | | | | APPLICATION SPEC: | |
| | | | | WEIGHT: | | SIZE: CAGE CODE: DRAWING NO: | |
| | | | | Customer Accessible Production Drawing | | A1 00779 ©=2837059 | |
| | | | | SCALE: 1:2 | | SHEET 4 OF 4 REV C1 | |