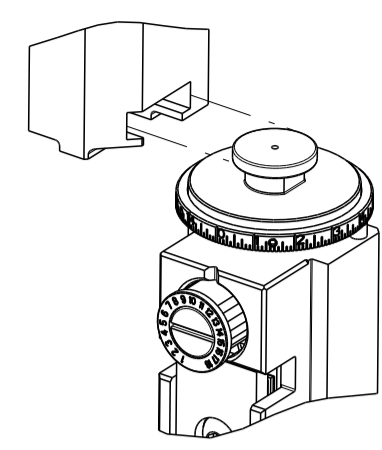


PART NUMBER	REVISION	DESCRIPTION	FEED TYPE
2837070-2	B	FINE CRIMP HEIGHT ADJUST	PNEUMATIC
7-2837070-7	A	CRIMP TOOLING KIT	-

ATLANTIC VERSION TERMINATOR
 INTERFACE ADAPTER



APPLICATOR DATA		
CRIMP	SIZE	TYPE
WIRE	0.89 mm [.035]	F
INSUL	1.19 mm [.047]	F

APPLICATOR INSTRUCTIONS
 408-35042

TERMINAL DATA: JST TERMINAL		JST CRIMP SPECIFICATION	
TERMINAL NAME: TERMINAL			
WIRE STRIP LENGTH		TERMINAL INSULATION DIAMETER RANGE	
1.60-1.80 mm [.063-.071 IN]		Ø0.95-1.30 mm [.037-.051 IN]	
TERMINAL APPLICATION SPECIFICATION	CHM-1-2154 Rev R1		
TERMINALS APPLIED			
TE TERMINAL	JST TERMINAL	TE TERMINAL	JST TERMINAL
3311062-1	SSFH-001T-P0.5		

WIRE SIZE	CRIMP HEIGHT mm [INCH]	CRIMP HEIGHT REFERENCE SETTING
22 AWG	0.78+/-0.025 [.031+/- .001]	3.7
24 AWG	0.71+/-0.025 [.028+/- .001]	4.6
26 AWG	0.65+/-0.025 [.025+/- .001]	5.1

- RECOMMENDED SPARE PARTS
 - REFER TO SUPPLIED INSTRUCTION SHEET FOR CLEANING, LUBRICATION AND STORAGE OF APPLICATOR.
 - APPLY PART NUMBER 1-23419-5 LOCTITE TO THREADS OF ITEMS 180. APPLY PART NUMBER 2-23419-6 LOCTITE TO THREADS OF ITEM 242.
 - CRIMP HEIGHT REFERENCE SETTING WAS THE SETTING USED WHEN THE APPLICATOR WAS QUALIFIED AT THE FACTORY. ADJUSTMENT MAY BE NECESSARY WHEN RUNNING APPLICATOR IN THE FIELD.
 - TERMINAL LUBRICANT IS RECOMMENDED.
 - TERMINAL PITCH NOT COMPATIBLE WITH MECHANICAL FEED.
7. UNLESS SPECIFIED OTHERWISE TORQUE VALUES SHALL BE USED PER DOCUMENT, 101-35000.

***WARNING**
 ON INSTALLATION, SET WIRE DISC TO CRIMP HEIGHT REFERENCE SETTING FOR LARGEST WIRE SIZE. CRIMP HEIGHT REFERENCE SETTINGS GREATER THAN THE VALUE SHOWN MAY CAUSE DAMAGE TO THE CRIMP TOOLING. REFER TO THE INSTRUCTION SHEET FOR PROPER SETUP AND ADJUSTMENTS.

LOC	DIST	REVISIONS					
A	66	P	LTN	DESCRIPTION	DATE	OWN	APVD
		1		ORIGINAL	23JAN2018	BW	TE
		A		RELEASE	23MAR2018	AW	TE
		B		ECR-20-002682	25FEB2020	FJ	TE
		B1		ECR-24-210004	28MAY2024	AB	GB

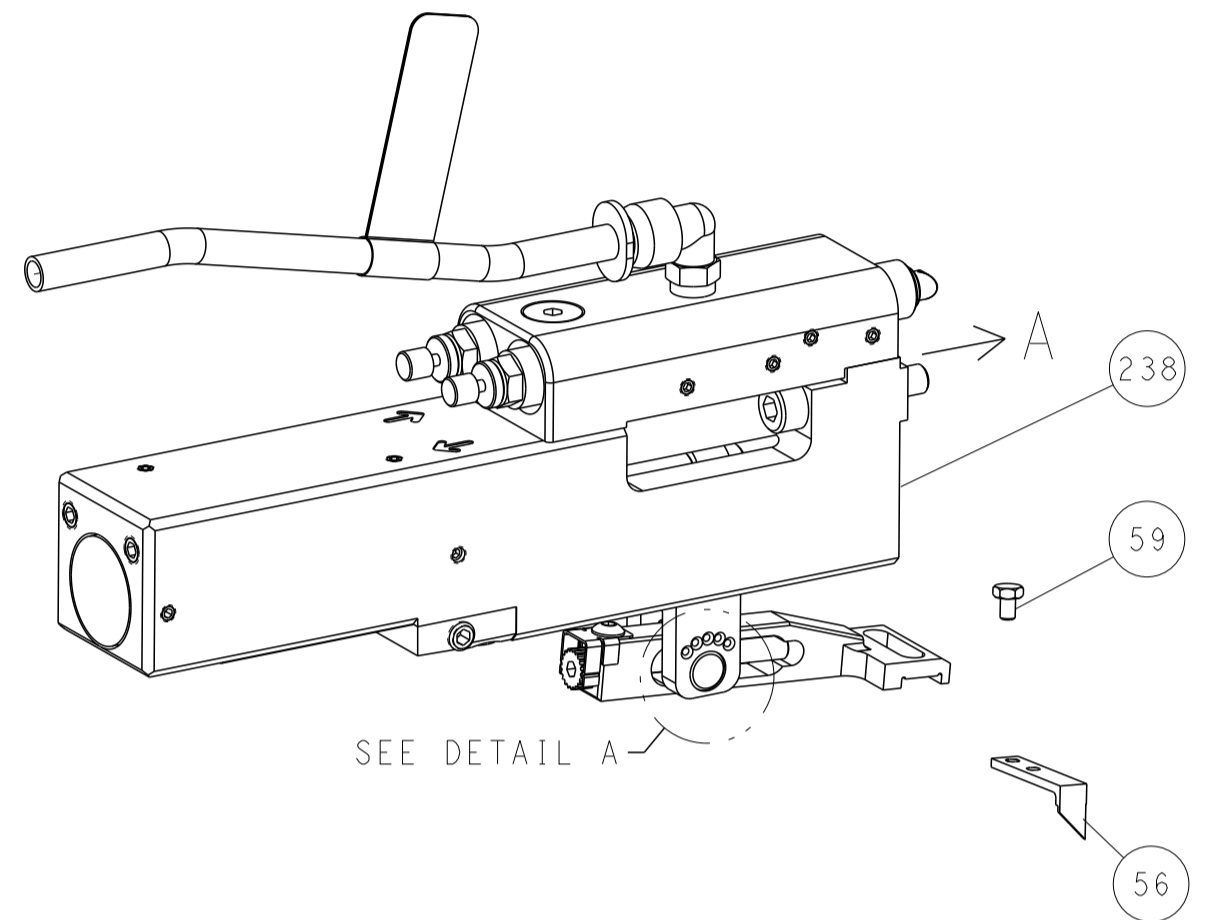
-	1	2119791-5	DEPRESSOR, WIRE	263	
-	2	1-2079383-0	SCR, BHSC, RoHS (M3 X 6)	262	
-	1	1-1633764-7	HOLD DOWN, TERMINAL	261	
-	1	2119641-1	FEED CAM, AIR FEED	248	
-	1	2119082-5	CAM, SNAIL, INSULATION ADJUSTMENT	244	
-	1	2079764-1	WASHER, WAVE SPRING, CREST-TO-CREST	243	
-	1	2119083-1	RETAINER, INSULATION DIAL	242	
-	1	7-18023-7	SCR, SKT HD CAP M3 X 4.0	241	
-	1	2844940-1	AIR FEED MODULE	238	
-	1	1-1752354-2	STANDOFF, HOLD-DOWN	180	
-	1	993111-1	PIN, SLOTTED SPRING 3.0 X 20.0	177	
-	1	8-22280-7	SPRING, COMPRESSION	176	
-	1	1752353-2	GUIDE PIN, HOLDDOWN	175	
-	1	1901680-2	GUIDE PIN, HOLDDOWN	174	
-	REF	994970-2	COUNTER, MAGNETIC	164	
-	1	2119955-1	ASSY, LUBRICATOR, SIDE FEED	113	
-	1	2844908-1	SCREW, LOCKING	99	
-	1	2844907-1	POST, LOCKING	98	
-	1	2-455888-2	SPACER, CRIMPER -	82	
-	1	1803607-3	DOCUMENTATION PACKAGE	71	
-	1	2-2119791-1	DEPRESSOR, WIRE	70	
-	1	2119740-1	TAG, IDENTIFICATION	67	
-	2	2168078-1	SCREW, DRIVE, RH, RoHS, 2 x .188	66	
-	1	2161425-1	SCREW, SHOULDER	60	
-	1	5-18022-5	SCR, HEX HD CAP, M4 X 6.0	59	
-	1	1338685-1	PAWL, FEED	56	
-	4	2168083-3	SCR, SKT HD CAP, RoHS, M4 X 12.0	54	
-	1	1-5018030-0	NUT, HEX, REG, RoHS, M3.5	52	
-	1	1901681-8	HOLDDOWN, TERMINAL	51	
-	1	18023-9	SCR, SKT HD CAP M4 X 6.0	49	
-	1	2-2119656-5	APPLICATOR BASIC ASSEMBLY, SF	46	
-	1	1803515-3	RAM ASSEMBLY, SF ATLANTIC	44	
-	1	1803602-1	SCR, BHSC, RoHS (M8 X 25)	41	
-	1	8-1752356-7	SUPPORT, TERMINAL	34	
-	2	2079383-5	SCR, BHSC, RoHS (M4 X 20)	33	
-	2	2-2844962-4	SPACER, CYLINDRICAL, STRIP GUIDE	30	
-	1	2844992-1	ASSEMBLY, STRIP GUIDE -	29	
-	1	1320928-2	STRIP GUIDE -	24	
-	1	2168083-2	SCR, SKT HD CAP, RoHS, M4 X 8.0	21	
-	2	1-18028-2	WASHER, FLAT, REG M4	20	
-	1	2119533-4	STRIPPER, SIDE FEED	19	
-	1	2119806-1	INSERT, SHEAR	13	
-	1	3-22280-3	SPRING, COMPRESSION	12	
-	1	1-356885-5	STOP, SHEAR	11	
-	1	2119805-1	SHEAR HOLDER, FRONT -	10	
-	1	1633861-3	SHEAR, FLOATING	9	
-	1	1803693-1	ANVIL, COMBINATION	8	
-	-	-	-	7	
-	-	-	-	6	
-	1	2119757-4	DEPRESSOR, SHEAR	5	
-	1	4-238011-8	BLOCK, CRIMPER SPACER	4	
-	1	1803692-1	CRIMPER, INSULATION F PREMIUM	3	
-	-	-	-	2	
-	1	1803396-5	CRIMPER, WIRE PREMIUM	1	
-	77	-2	PART NO	DESCRIPTION	ITEM NO

DIMENSIONS: mm 		TOLERANCES UNLESS OTHERWISE SPECIFIED: 0 PLC ± 1 PLC ± 2 PLC ± 3 PLC ± 4 PLC ± ANGLES ± FINISH		DWG: B. WEAVER 23JAN2018 CHK: T. ELBIN 23JAN2018 APVD: T. ELBIN 23JAN2018		NAME: Ocean Side Feed Applicator SIZE: A1 CAGE CODE: 00779 DRAWING NO: 2837070 RESTRICTED TO:	
MATERIAL		FINISH		WEIGHT		SCALE: 1:2 SHEET 1 OF 4 REV: B1	

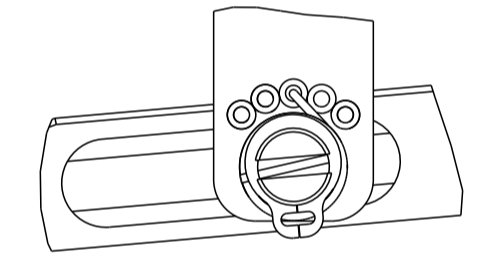
LOC	DIST	REVISIONS					
A	66	P	LYR	DESCRIPTION	DATE	DWN	APVD
		-		SEE SHEET 1	-	-	-

FEED TYPE

PNEUMATIC

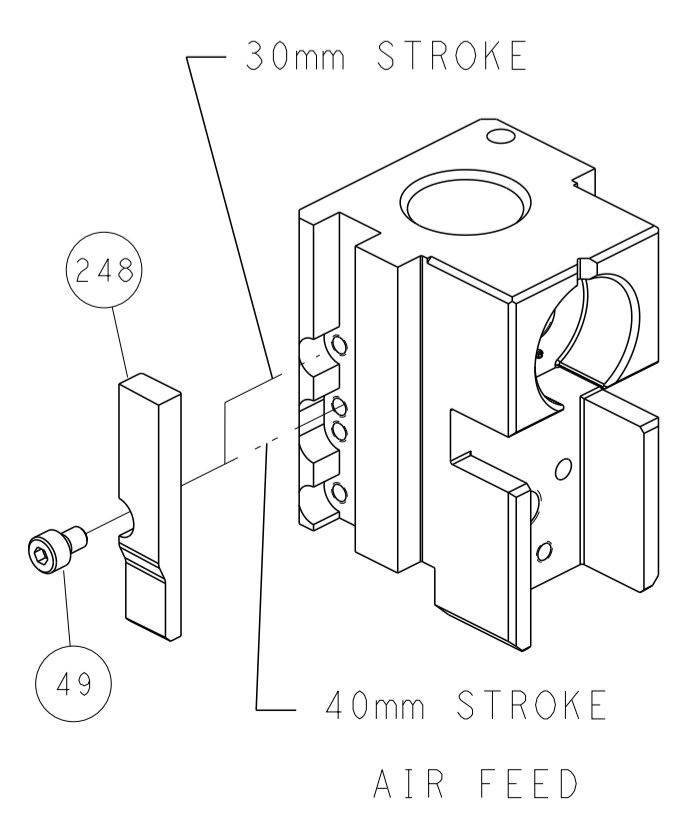


FEED SPRING SETTING POSITION (SHOWN FROM REAR SIDE)

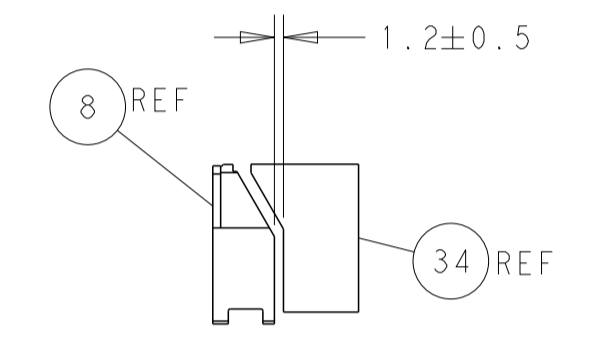
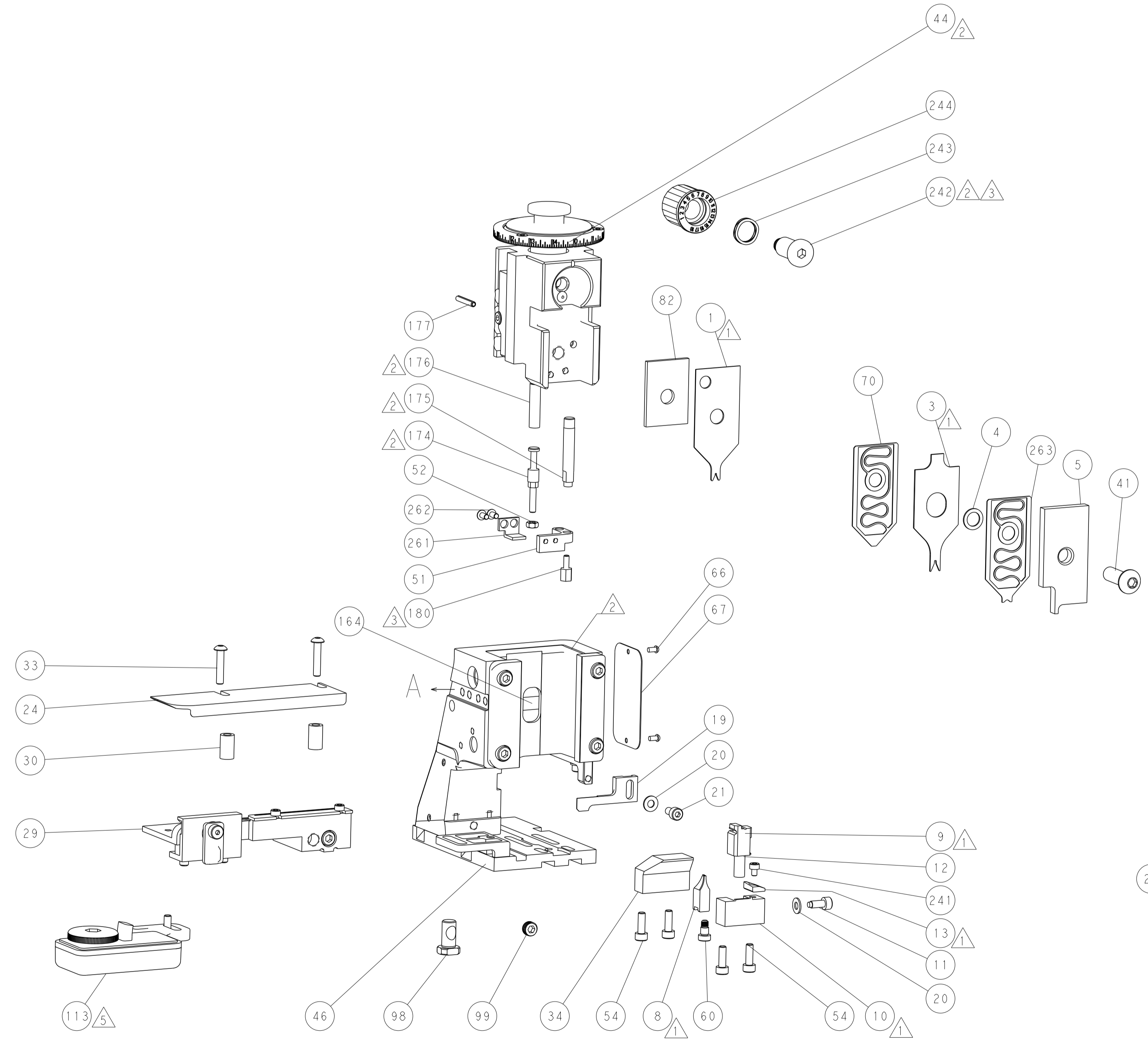


DETAIL A

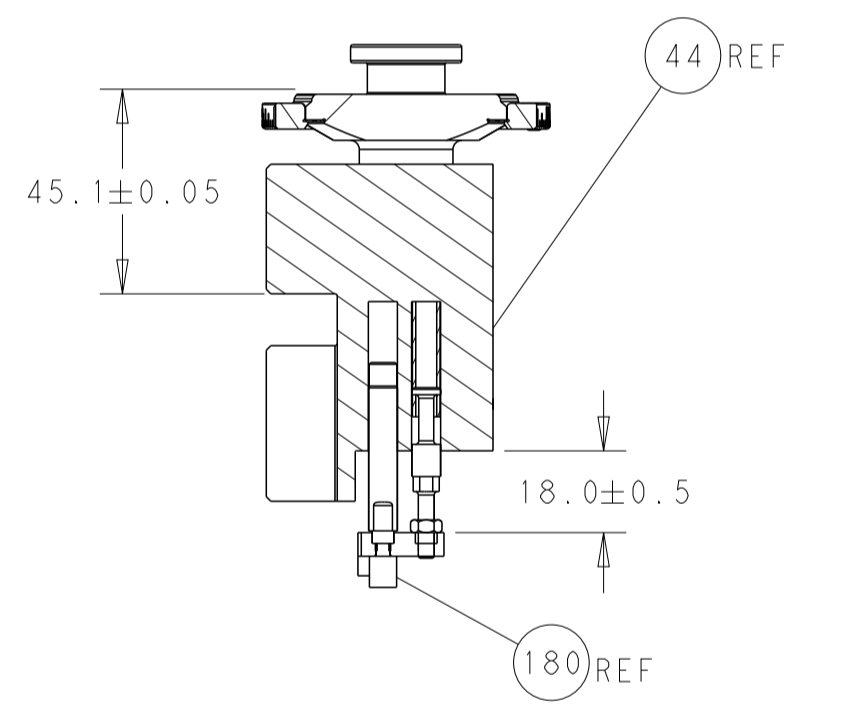
CAM POSITION



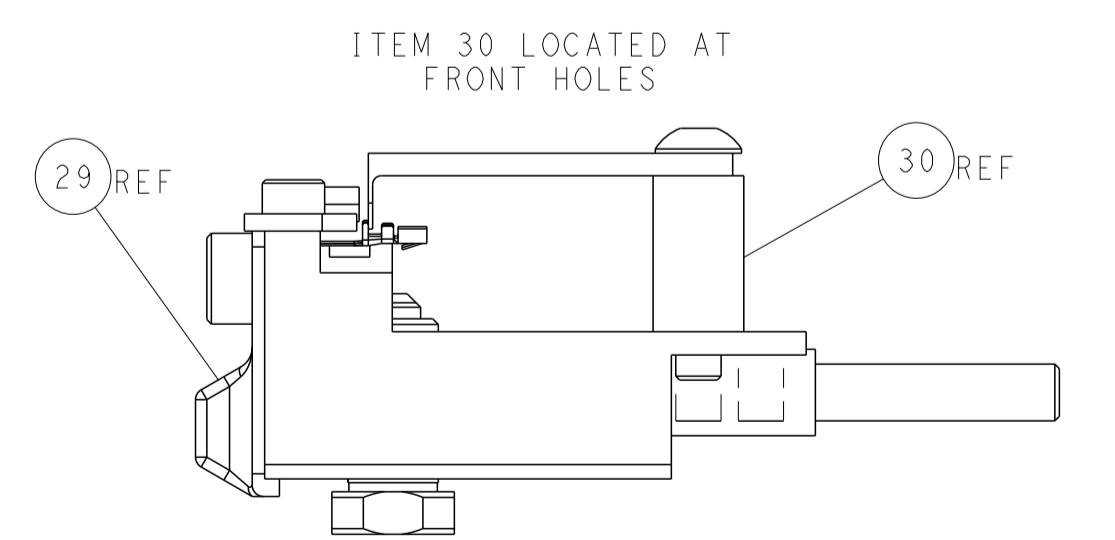
AIR FEED



TERMINAL SUPPORT LOCATION



RAM AND HOLDDOWN SET-UP



FEED TRACK POSITION GUIDE BY INSULATION BARREL

DIMENSIONS: mm 		TOLERANCES UNLESS OTHERWISE SPECIFIED: 0 PLC ± 1 PLC ± 2 PLC ± 3 PLC ± 4 PLC ± ANGLES ± FINISH ±		DWN B. WEAVER 23JAN2018 CHK T. ELBIN 23JAN2018 APVD T. ELBIN 23JAN2018 NAME Ocean Side Feed Applier SIZE CAGE CODE DRAWING NO RESTRICTED TO A1 00779 C=2837070 Customer Accessible Production Drawing SCALE 1:2 SHEET 2 OF 4 REV B1	
THIS DRAWING IS UNPUBLISHED. RELEASED FOR PUBLICATION 2018. ALL RIGHTS RESERVED.				TE Connectivity Harrisburg, PA 17105-3608	