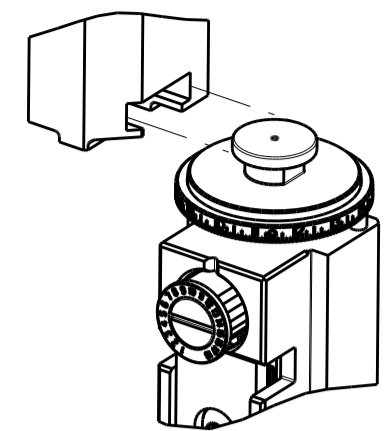


PART NUMBER	REVISION	DESCRIPTION	FEED TYPE
2837123-2	B	FINE CRIMP HEIGHT ADJUST	PNEUMATIC
7-2837123-2	B	PNEUMATIC AND CRIMP TOOLING KIT	PNEUMATIC
7-2837123-7	A	CRIMP TOOLING KIT	-

ATLANTIC VERSION TERMINATOR INTERFACE ADAPTER

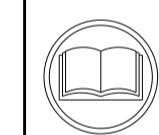


APPLICATOR DATA		
CRIMP	SIZE	TYPE
WIRE	4.98 mm [.196]	F
INSUL	6.55 mm [.258]	F

APPLICATOR INSTRUCTIONS 408-35042

TERMINAL DATA: DELPHI TERMINAL PACKARD CRIMP SPECIFICATION			
TERMINAL NAME: TAXI TERMINAL, SPADE			
WIRE STRIP LENGTH	TERMINAL INSULATION DIAMETER RANGE		
6.57-7.33 mm [.259-.289 IN]	3.50-4.67 mm [.138-.184 IN]		
TERMINAL APPLICATION SPECIFICATION	CUSTOMER SPECIFICATION		
TERMINALS APPLIED			
TE TERMINAL	DELPHI TERMINAL	TE TERMINAL	DELPHI TERMINAL
3311093-1	12004437		

WIRE SIZE	CRIMP HEIGHT mm [INCH]	CRIMP HEIGHT REFERENCE SETTING
3.0mm2 or 12AWG	2.85+/-0.05 [.112+/- .002]	5.1



- RECOMMENDED SPARE PARTS
- REFER TO SUPPLIED INSTRUCTION SHEET FOR CLEANING, LUBRICATION AND STORAGE OF APPLICATOR.
- APPLY PART NUMBER 2-23419-6 LOCTITE TO THREADS OF ITEM 242.
- CRIMP HEIGHT REFERENCE SETTING WAS THE SETTING USED WHEN THE APPLICATOR WAS QUALIFIED AT THE FACTORY. ADJUSTMENT MAY BE NECESSARY WHEN RUNNING APPLICATOR IN THE FIELD.
- UNLESS SPECIFIED OTHERWISE TORQUE VALUES SHALL BE USED PER DOCUMENT, 101-35000.
- TERMINAL PITCH NOT COMPATIBLE WITH MECHANICAL FEED.

***WARNING**
 ON INSTALLATION, SET WIRE DISC TO CRIMP HEIGHT REFERENCE SETTING FOR LARGEST WIRE SIZE. CRIMP HEIGHT REFERENCE SETTINGS GREATER THAN THE VALUE SHOWN MAY CAUSE DAMAGE TO THE CRIMP TOOLING, REFER TO THE INSTRUCTION SHEET FOR PROPER SETUP AND ADJUSTMENTS.

LOC	DIST	REVISIONS			
		REV	DATE	BY	APPV
A	66	1	14MAR2018	MEH	TE
		A	30APR2018	AW	TE
		B	12AUG2019	FZ	TE

-	1	1	2844961-1	SPACER, AIR BLAST	280
-	1	1	2119641-1	FEED CAM, AIR FEED	248
-	1	1	2119082-8	CAM, SNAIL, INSULATION ADJUSTMENT	244
-	1	1	2079764-1	WASHER, WAVE SPRING, CREST-TO-CREST	243
-	1	1	2119083-1	RETAINER, INSULATION DIAL	242
-	1	1	2844940-2	AIR FEED MODULE	238
-	REF	REF	994970-2	COUNTER, MAGNETIC	164
-	1	1	2217068-1	BRACKET, AIR BLAST	130
-	1	1	2030758-3	TUBING, POLYURETHANE	129
-	1	1	986965-8	NUT, LOCK, HEX, TORQUE (M4)	128
-	1	1	2168083-8	SCR, SKT HD CAP, RoHS, M4 X 16	127
-	1	1	986220-3	CLAMP, CABLE, BLACK	126
-	1	1	1-22281-8	SPRING, COMPRESSION	121
-	1	1	23238-1	INSERT, COUPLING	101
-	2	2	1-2079383-2	SCR, BHSC, RoHS (M4 X 12)	100
-	1	1	2844908-1	SCREW, LOCKING	99
-	1	1	2844907-1	POST, LOCKING	98
-	2	2	1-2168083-3	SCR, SKT HD CAP, RoHS, M3 X 16	97
-	1	1	1633497-4	REAR STRIP GUIDE	96
-	2	2	2168083-1	SCR, SKT HD CAP, RoHS, M3 X 8.0	95
-	1	1	2168083-6	SCR, SKT HD CAP, RoHS, M5 X 65	93
-	1	1	455888-9	SPACER, CRIMPER	82
-	1	1	1803607-3	DOCUMENTATION PACKAGE	71
-	1	1	2119740-1	TAG IDENTIFICATION	67
-	2	2	2168078-1	SCREW, DRIVE, RH, RoHS, 2 x .188	66
-	2	2	2-18032-5	SCR, SET, FLT PNT, M5 X 20.0	61
-	1	1	2168083-2	SCR, SKT HD CAP, RoHS, M4 X 8.0	60
-	1	1	5-18022-5	SCR, HEX HD CAP, M4 X 6.0	59
-	1	1	1-1338683-0	FEED PAWL	56
-	1	1	1-519014-5	SCR, SET, CUP POINT M2.5 X 5	54
-	3	3	2168083-9	SCR, SKT HD CAP, RoHS, M4 X 20	53
-	1	1	1-811242-0	BUMPER, HOLD DOWN	51
-	1	1	1-1803011-6	HOLDER, SLUG BLADE	50
-	1	1	18023-9	SCR, SKT HD CAP M4 X 6.0	49
-	1	1	1803583-9	APPLICATOR BASIC ASSEMBLY, SF	46
-	1	1	1803515-1	RAM ASSEMBLY, SF ATLANTIC	44
-	1	1	1803602-1	SCR, BHSC, RoHS (M8 X 25)	41
-	1	1	3-2305692-4	PLATE, REAR STRIP GUIDE	29
-	2	2	22283-1	SPRING, COMPRESSION	27
-	1	1	356835-1	LEVER, DRAG RELEASE	26
-	1	1	240792-1	DRAG, TERMINAL	25
-	1	1	980371-4	SCR, SKT HD SHLDR 5.0 DIA X 6.0	23
-	1	1	2168083-2	SCR, SKT HD CAP, RoHS, M4 X 8.0	21
-	2	2	1-18028-2	WASHER, FLAT, REG M4	20
-	1	1	2119533-1	STRIPPER, SIDE FEED	19
-	1	1	1-189124-1	GUIDE, FRONT STRIP	12
-	1	1	6-240641-7	SPACER	11
-	1	1	1-2161951-5	BLADE, SLUG	10
-	1	1	1-2063687-8	PLATE, REAR SHEAR	9
1	2	1	1803525-5	ANVIL, SPECIAL, COMBINATION	8
-	1	1	240641-9	SPACER	7
-	-	-	-	-	6
-	-	-	-	-	5
-	1	1	3-238009-3	BLOCK, FL CRIMPER SPACER	4
1	2	1	2-1803384-4	CRIMPER, INSULATION F	3
-	1	1	1-455888-6	SPACER, CRIMPER	2
1	2	1	3-1803188-7	CRIMPER, WIRE	1

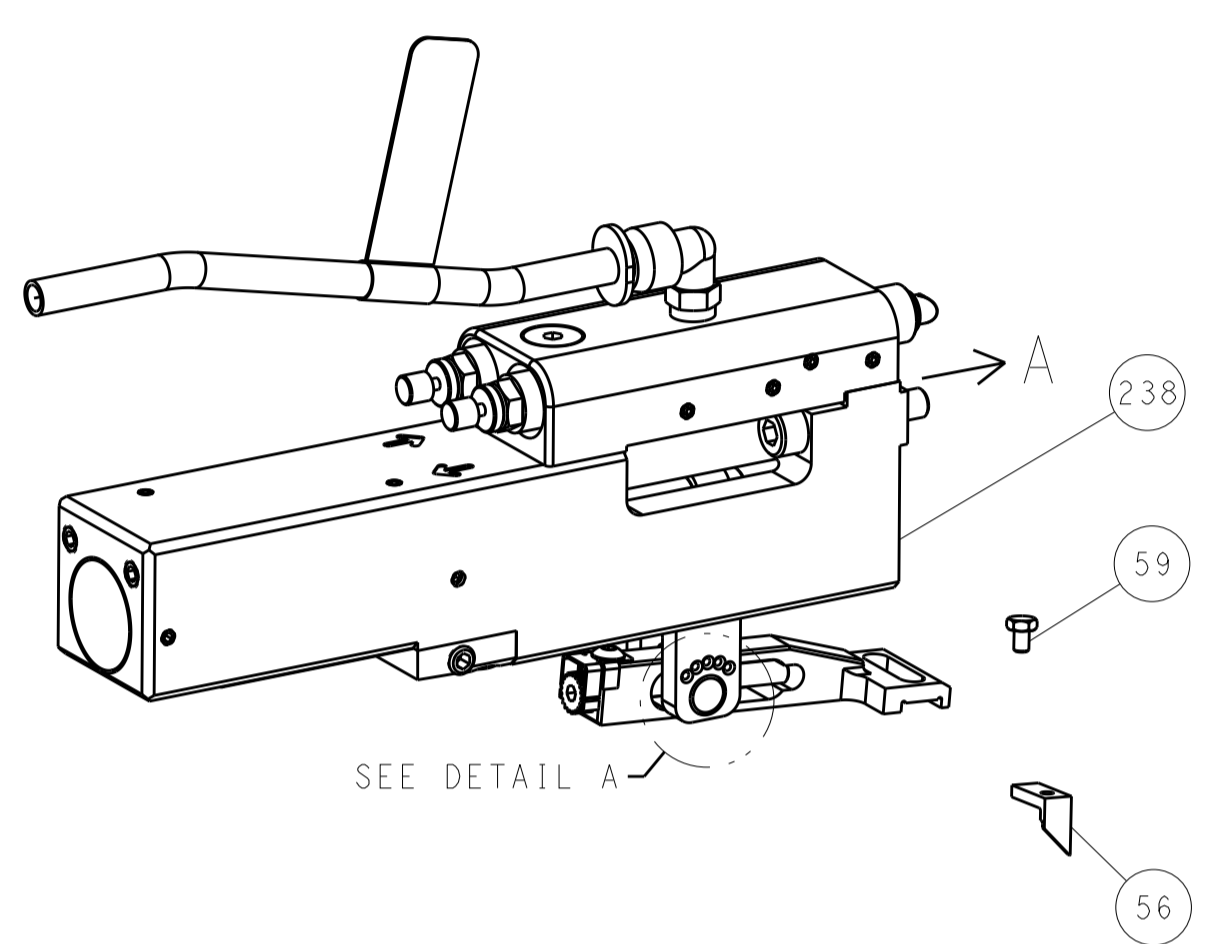
DIMENSIONS:		TOLERANCES UNLESS OTHERWISE SPECIFIED:		DATE	BY	APPV
mm	0 PLC ±	1 PLC ±	2 PLC ±	12MAR2014	CHK	12MAR2014
	3 PLC ±	4 PLC ±	ANGLES ±	12MAR2014	APVD	12MAR2014
MATERIAL	FINISH			TE Connectivity Harrisburg, PA 17105-3608		
				NAME: Ocean Side Feed Applicator		
				SIZE: A1 CAGE CODE: 00779 DRAWING NO: 2837123		
				WEIGHT: - RESTRICTED TO: -		
				Customer Accessible Production Drawing SCALE: 1:2 SHEET 1 OF 4 REV B		

ATLANTIC VERSION
 Shown on sheets 1 of 4 & 2 of 4
 (Pacific version shown on sheets 3 of 4 & 4 of 4)

LOC		DIST		REVISIONS			
A	66	P	LTM	DESCRIPTION	DATE	DWN	APVD
		-		SEE SHEET 1	-	-	-

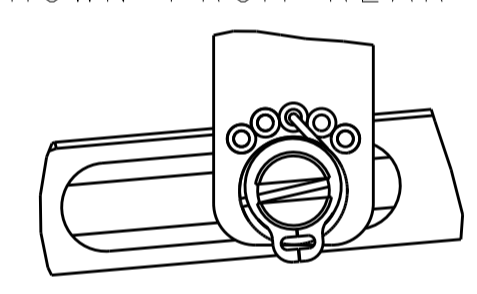
FEED TYPE

PNEUMATIC

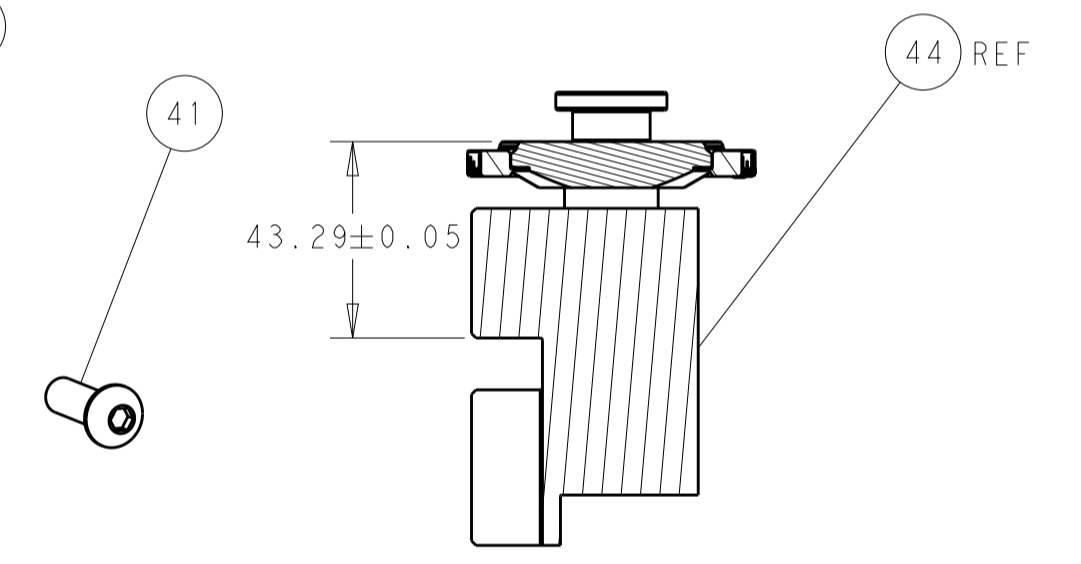
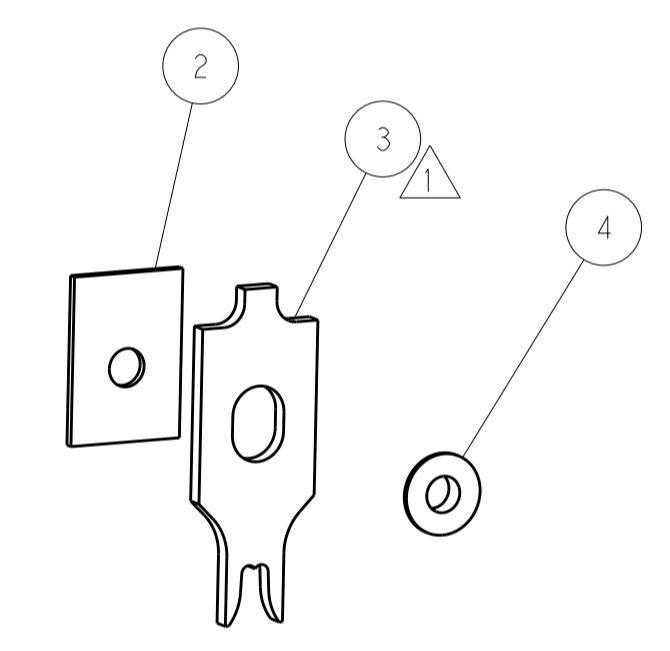
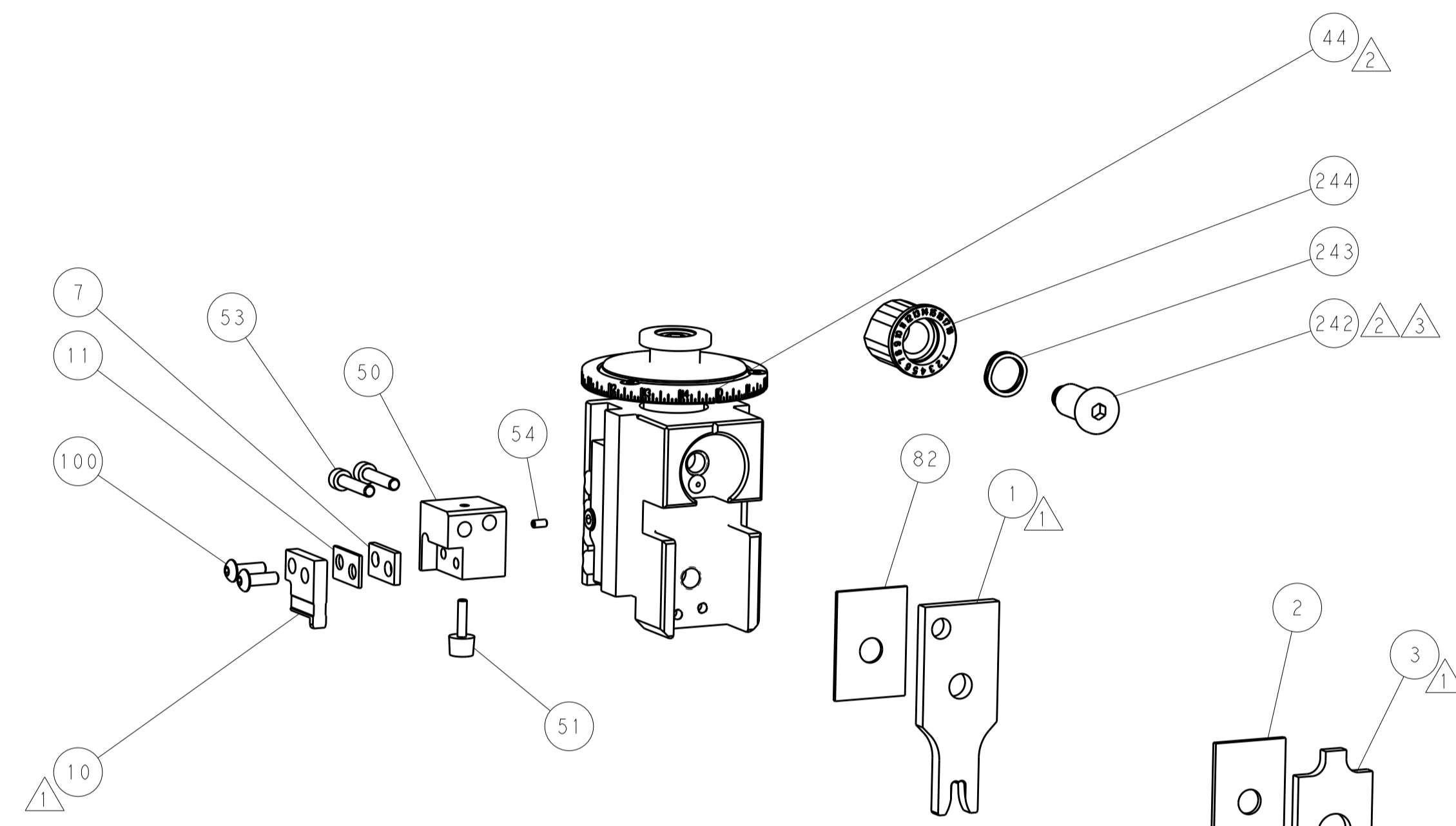


SEE DETAIL A

FEED SPRING SETTING POSITION
(SHOWN FROM REAR SIDE)

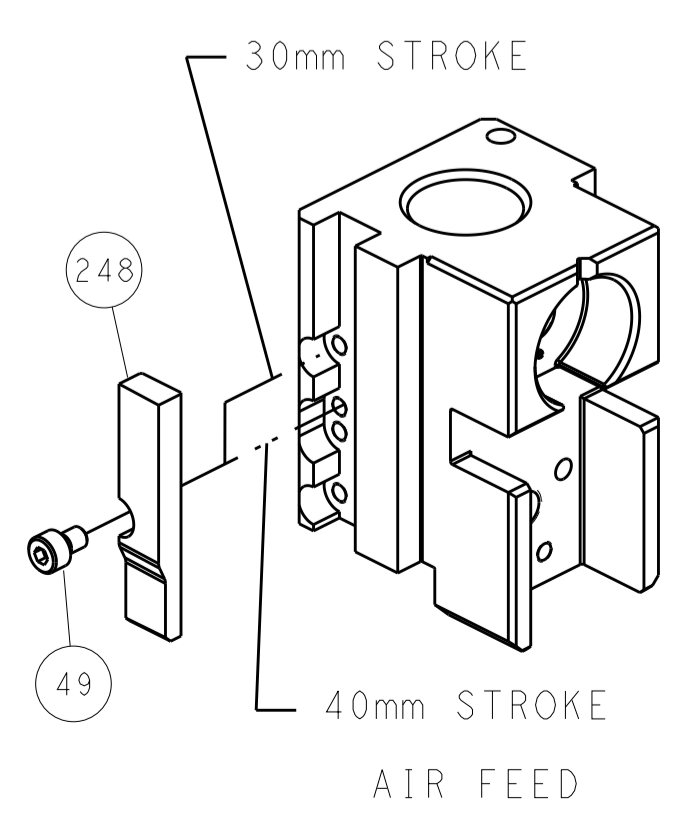


DETAIL A

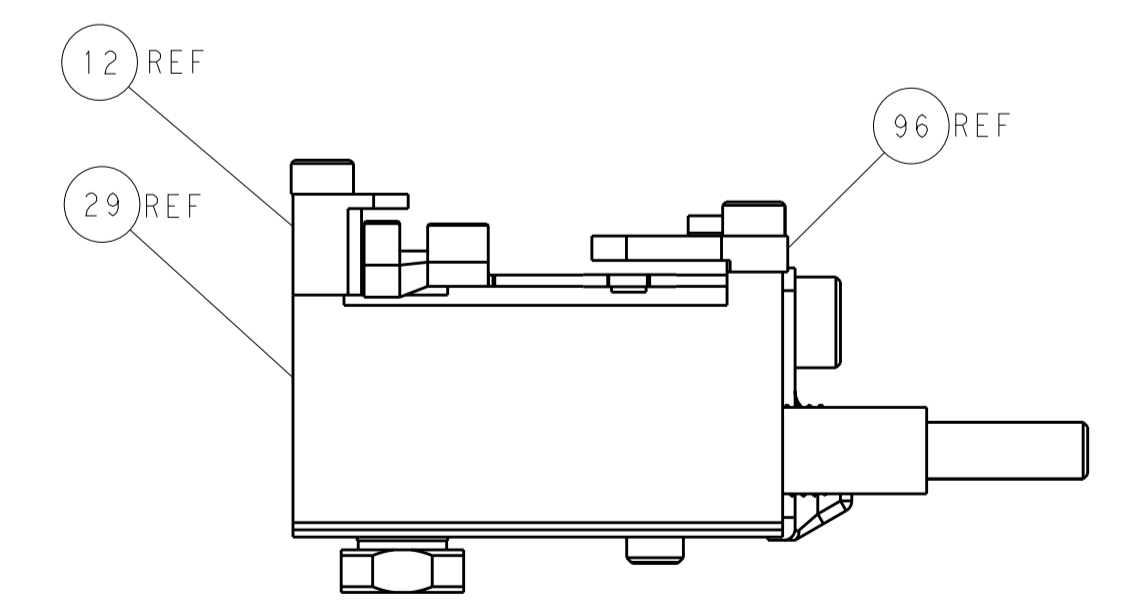
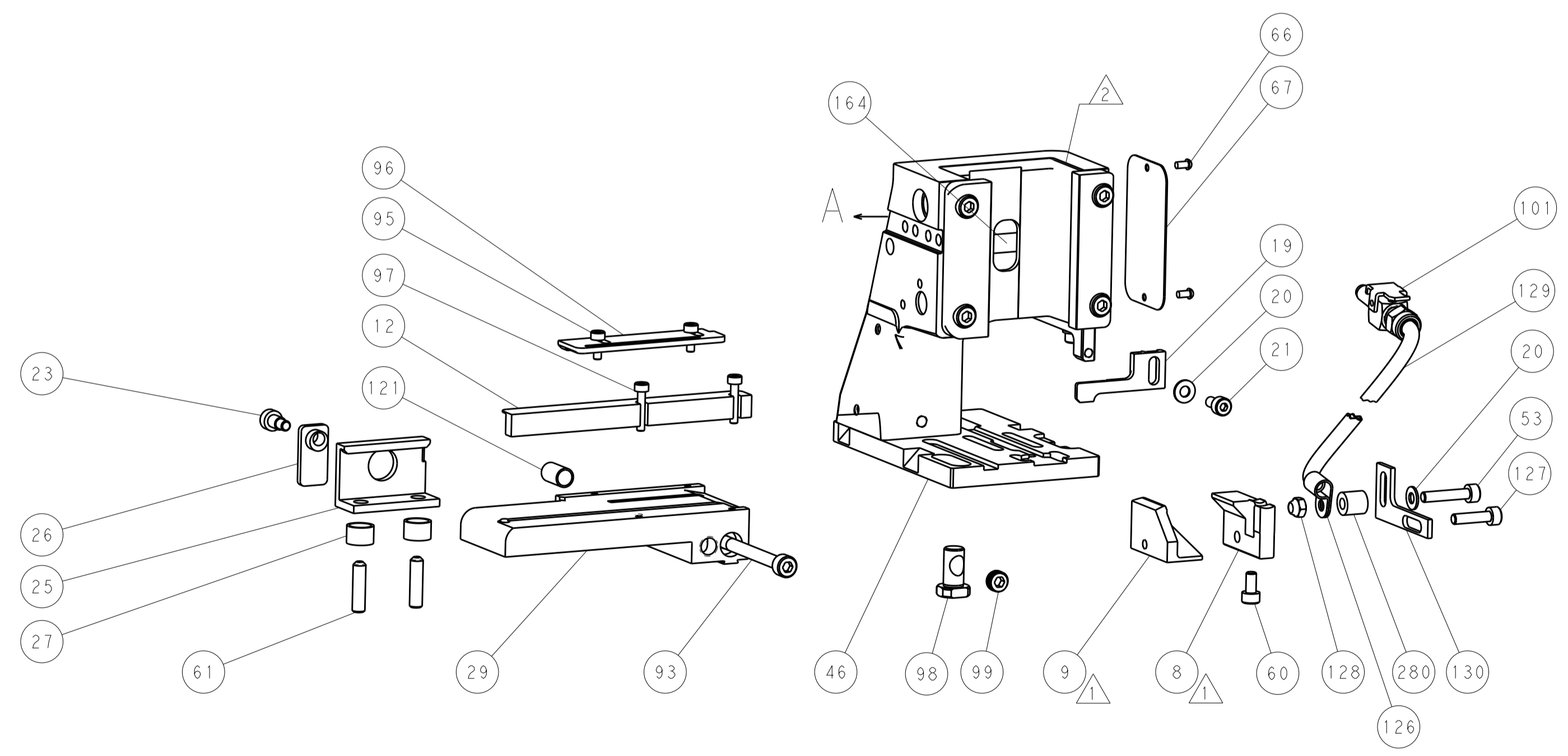


HOLDDOWN SET-UP

CAM POSITION



AIR FEED



FEED TRACK POSITION
GUIDE AS SHOWN

ATLANTIC VERSION
 Shown on sheets 1 of 4 & 2 of 4
 (Pacific version shown on sheets 3 of 4 & 4 of 4)

DIMENSIONS:		TOLERANCES UNLESS OTHERWISE SPECIFIED:		DWN	12MAR2014	TE Connectivity Harrisburg, PA 17105-3608	
mm	0 PLC ±	1 PLC ±	2 PLC ±	CHK	12MAR2014		
	3 PLC ±	4 PLC ±	ANGLES ±	APVD	12MAR2014	NAME	
	MATERIAL	FINISH	WEIGHT	PRODUCT SPEC		Ocean Side Feed Applicator	
				APPLICATION SPEC			
				SIZE	CAGE CODE	DRAWING NO	RESTRICTED TO
				A1	00779	©=2837123	
				Customer Accessible Production Drawing		SCALE	1:2
						SHEET	2 of 4
						REV	B

THIS DRAWING IS UNPUBLISHED.		RELEASED FOR PUBLICATION	
COPYRIGHT 20 BY TYCO ELECTRONICS CORPORATION. ALL RIGHTS RESERVED.		20	
PART NUMBER	REVISION	DESCRIPTION	FEED TYPE
2-2837123-2	B	FINE CRIMP HEIGHT ADJUST	PNEUMATIC
7-2837123-7	A	CRIMP TOOLING KIT	-

PACIFIC VERSION TERMINATOR INTERFACE ADAPTER



APPLICATOR DATA		
CRIMP	SIZE	TYPE
WIRE	4.98 mm [.196]	F
INSUL	6.55 mm [.258]	F
APPLICATOR INSTRUCTIONS 408-35042		

TERMINAL DATA: DELPHI TERMINAL PACKARD CRIMP SPECIFICATION			
TERMINAL NAME: TAXI TERMINAL, SPADE			
WIRE STRIP LENGTH 6.57-7.33 mm [.259-.289 IN]		TERMINAL INSULATION DIAMETER RANGE 3.50-4.67 mm [.138-.184 IN]	
TERMINAL APPLICATION SPECIFICATION	CUSTOMER SPECIFICATION	-	-
TERMINALS APPLIED ⁶			
TE TERMINAL 3311093-1	DELPHI TERMINAL 12004437	TE TERMINAL	DELPHI TERMINAL

WIRE SIZE	CRIMP HEIGHT mm [INCH]	CRIMP HEIGHT REFERENCE SETTING
3.0mm2 or 12AWG	2.85 +/- 0.05 [.112 +/- .002]	5.1



- ¹ RECOMMENDED SPARE PARTS
- ² REFER TO SUPPLIED INSTRUCTION SHEET FOR CLEANING, LUBRICATION AND STORAGE OF APPLICATOR.
- ³ APPLY PART NUMBER 2-23419-6 LOCTITE TO THREADS OF ITEM 242.
- ⁴ CRIMP HEIGHT REFERENCE SETTING WAS THE SETTING USED WHEN THE APPLICATOR WAS QUALIFIED AT THE FACTORY. ADJUSTMENT MAY BE NECESSARY WHEN RUNNING APPLICATOR IN THE FIELD.
- 5. UNLESS SPECIFIED OTHERWISE TORQUE VALUES SHALL BE USED PER DOCUMENT, 101-35000.
- ⁶ TERMINAL PITCH NOT COMPATIBLE WITH MECHANICAL FEED.

***WARNING**
ON INSTALLATION, SET WIRE DISC TO CRIMP HEIGHT REFERENCE SETTING FOR LARGEST WIRE SIZE. CRIMP HEIGHT REFERENCE SETTINGS GREATER THAN THE VALUE SHOWN MAY CAUSE DAMAGE TO THE CRIMP TOOLING. REFER TO THE INSTRUCTION SHEET FOR PROPER SETUP AND ADJUSTMENTS.

PACIFIC VERSION
Shown on sheets 3 of 4 & 4 of 4
(Atlantic version shown on sheets 1 of 4 & 2 of 4)

LOC	DIST	REV	DATE	BY	APPV
A	66				

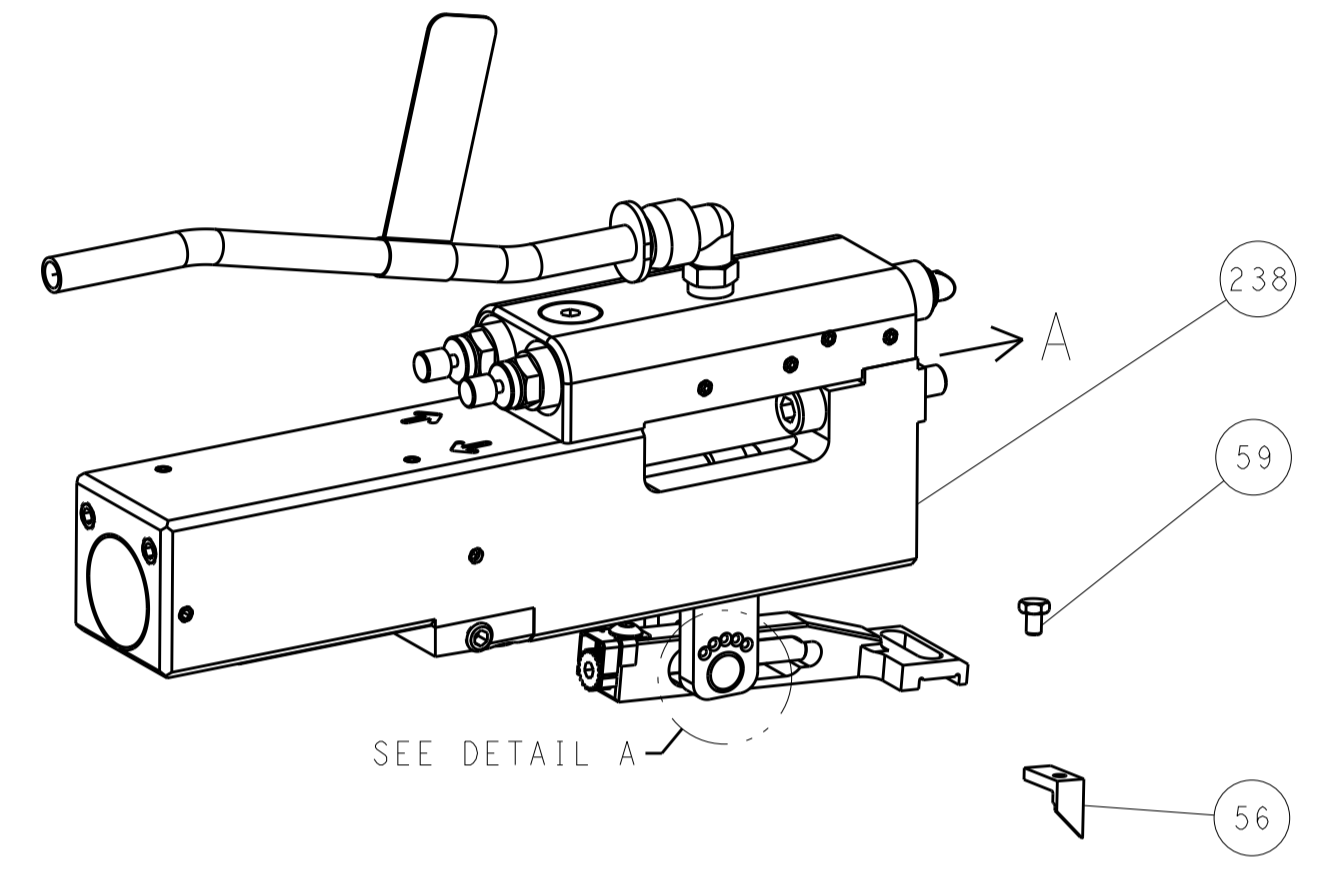
REVISIONS					
REV	DATE	DESCRIPTION	DATE	BY	APPV
-	-	SEE SHEET 1	-	-	-

-	1	2844961-1	SPACER, AIR BLAST	280
-	1	2119082-8	CAM, SNAIL, INSULATION ADJUSTMENT	244
-	1	2079764-1	WASHER, WAVE SPRING, CREST-TO-CREST	243
-	1	2119083-1	RETAINER, INSULATION DIAL	242
-	1	2844940-2	AIR FEED MODULE	238
-	REF	994970-2	COUNTER, MAGNETIC	164
-	1	2119641-2	FEED CAM, AIR FEED	151
-	1	2168083-8	SCR, SKT HD CAP, RoHS, M4 X 16	144
-	1	1-1803583-0	APPLICATOR BASIC ASSEMBLY, SF	141
-	1	1803516-1	RAM ASSEMBLY, SF PACIFIC	140
-	1	2217068-1	BRACKET, AIR BLAST	130
-	1	2030758-3	TUBING, POLYURETHANE	129
-	1	986965-8	NUT, LOCK, HEX, TORQUE (M4)	128
-	1	2168083-8	SCR, SKT HD CAP, RoHS, M4 X 16	127
-	1	986220-3	CLAMP, CABLE, BLACK	126
-	1	1-22281-8	SPRING, COMPRESSION	121
-	1	23238-1	INSERT, COUPLING	101
-	2	1-2079383-2	SCR, BHSC, RoHS (M4 X 12)	100
-	1	2844908-1	SCREW, LOCKING	99
-	1	2844907-1	POST, LOCKING	98
-	2	1-2168083-3	SCR, SKT HD CAP, RoHS, M3 X 16	97
-	1	1633497-4	REAR STRIP GUIDE	96
-	2	2168083-1	SCR, SKT HD CAP, RoHS, M3 X 8.0	95
-	1	2168083-6	SCR, SKT HD CAP, RoHS, M5 X 65	93
-	1	455888-9	SPACER, CRIMPER	82
-	1	1803607-3	DOCUMENTATION PACKAGE	71
-	1	2119740-1	TAG, IDENTIFICATION	67
-	2	2168078-1	SCREW, DRIVE, RH, RoHS, 2 x .188	66
-	2	2-18032-5	SCR, SET, FLT PNT, M5 X 20.0	61
-	1	5-18022-5	SCR, HEX HD CAP, M4 X 6.0	59
-	1	1-1338683-0	FEED PAWL	56
-	1	1-519014-5	SCR, SET, CUP POINT M2.5 X 5	54
-	3	2168083-9	SCR, SKT HD CAP, RoHS, M4 X 20	53
-	1	1-811242-0	BUMPER, HOLD DOWN	51
-	1	1-1803011-6	HOLDER, SLUG BLADE	50
-	1	18023-9	SCR, SKT HD CAP M4 X 6.0	49
-	1	1803602-1	SCR, BHSC, RoHS (M8 X 25)	41
-	1	3-2305692-4	PLATE, REAR STRIP GUIDE	29
-	2	22283-1	SPRING, COMPRESSION	27
-	1	356835-1	LEVER, DRAG RELEASE	26
-	1	240792-1	DRAG, TERMINAL	25
-	1	980371-4	SCR, SKT HD SHLDR 5.0 DIA X 6.0	23
-	1	2168083-2	SCR, SKT HD CAP, RoHS, M4 X 8.0	21
-	2	1-18028-2	WASHER, FLAT, REG M4	20
-	1	2119533-1	STRIPPER, SIDE FEED	19
-	1	1-189124-1	GUIDE, FRONT STRIP	12
-	1	6-240641-7	SPACER	11
-	1	1-2161951-5	BLADE, SLUG	10
-	1	1-2063687-8	PLATE, REAR SHEAR	9
-	1	1803525-5	ANVIL, SPECIAL, COMBINATION	8
-	1	240641-9	SPACER	7
-	-	-	-	6
-	-	-	-	5
-	1	3-238009-3	BLOCK, FL CRIMPER SPACER	4
-	1	2-1803384-4	CRIMPER, INSULATION F	3
-	1	1-455888-6	SPACER, CRIMPER	2
-	1	3-1803188-7	CRIMPER, WIRE	1
-	77	-22	PART NO	ITEM NO

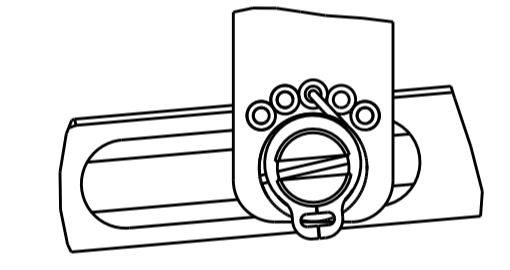
DIMENSIONS: mm		TOLERANCES UNLESS OTHERWISE SPECIFIED:		OWN	12MAR2014	STE TE Connectivity Harrisburg, PA 17105-3608
0 PLC ±		1 PLC ±		CHK	12MAR2014	
2 PLC ±		3 PLC ±		APPV	12MAR2014	NAME
4 PLC ±		ANGLES ±		PRODUCT SPEC		Ocean Side Feed Applicator
MATERIAL		FINISH		APPLICATION SPEC		
WEIGHT		SCALE		SIZE		RESTRICTED TO
Customer Accessible Production Drawing		1:2		A1 00779 C=2837123		
SHEET		OF		REV		B

LOC		DIST		REVISIONS			
A		66		REV	DATE	BY	APPD
-				1	SEE SHEET 1	-	-

FEED TYPE
PNEUMATIC

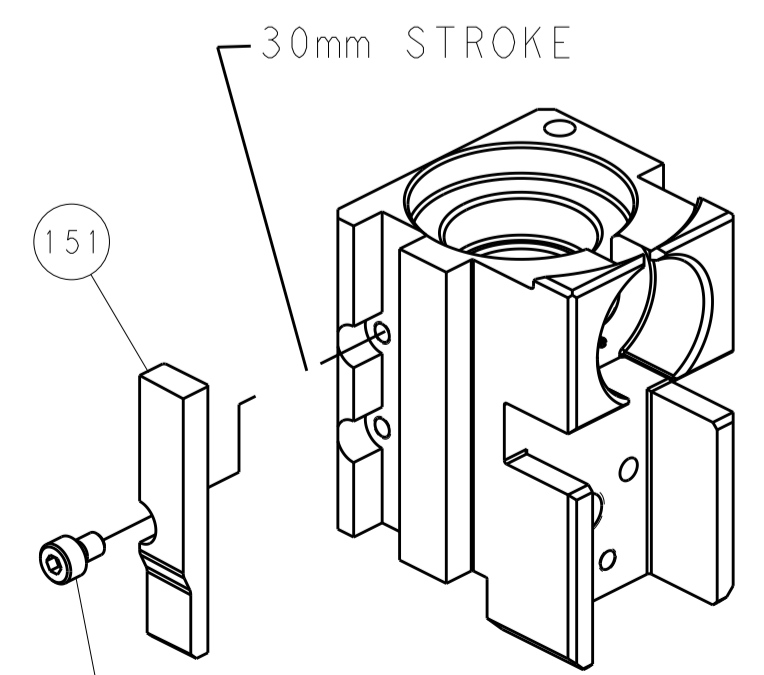


FEED SPRING SETTING POSITION
(SHOWN FROM REAR SIDE)

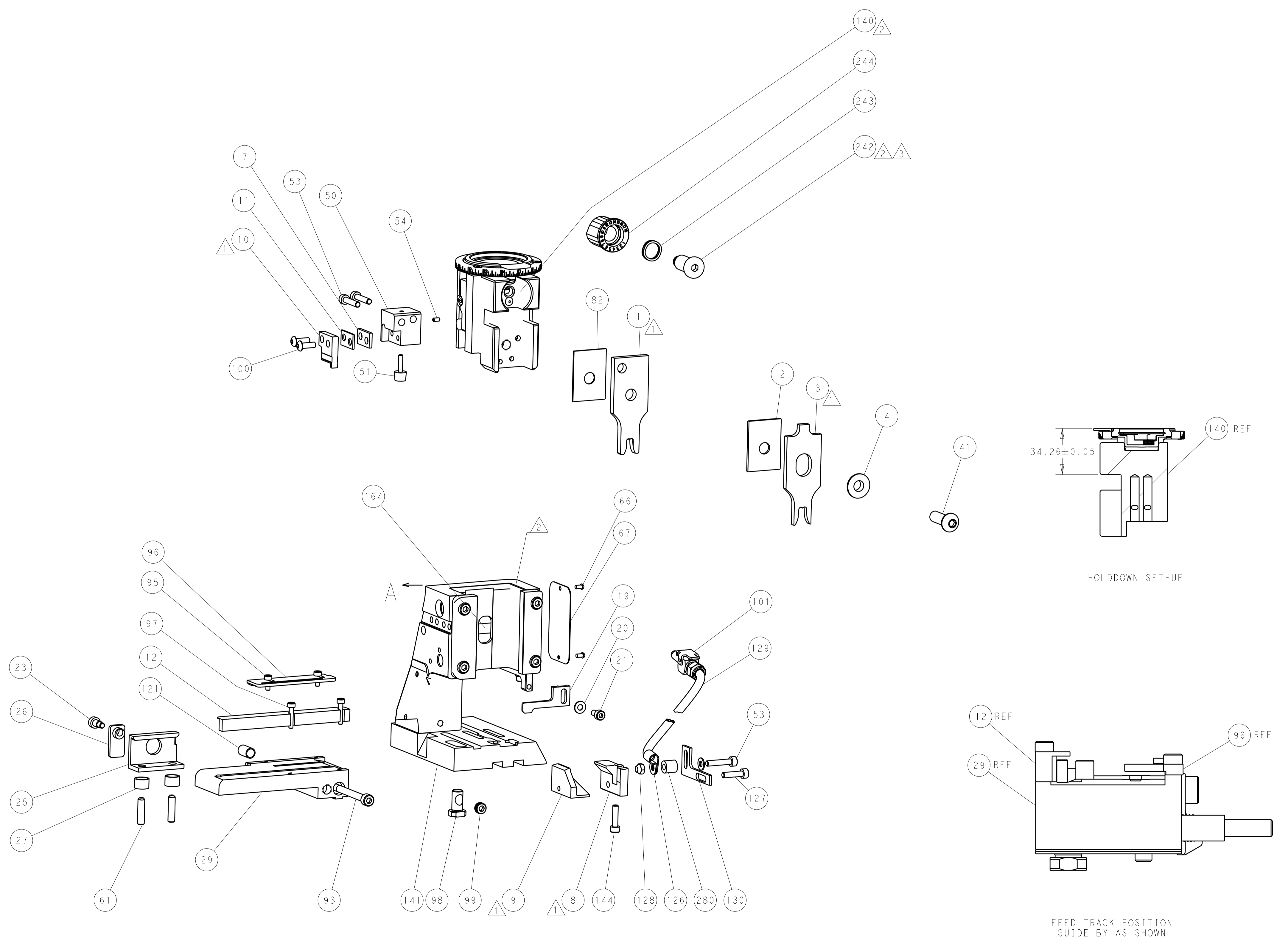


DETAIL A

CAM POSITION



AIR FEED



PACIFIC VERSION
 Shown on sheets 3 of 4 & 4 of 4
 (Atlantic version shown on sheets 1 of 4 & 2 of 4)

DIMENSIONS:		TOLERANCES UNLESS OTHERWISE SPECIFIED:		DWN	12MAR2014	TE Connectivity Harrisburg, PA 17105-3608
mm	0 PLC	±		CHK	12MAR2014	
	1 PLC	±		APVD	12MAR2014	NAME
	2 PLC	±				PRODUCT SPEC
	3 PLC	±				APPLICATION SPEC
	4 PLC	±				SIZE
	ANGLES	±				CAGE CODE
MATERIAL	FINISH					DRAWING NO
						RESTRICTED TO
				WEIGHT		A 00779 C=2837123
				Customer Accessible Production Drawing		SCALE
				1:2	SHEET	4 OF 4
					REV	B