

PART NUMBER	REVISION	DESCRIPTION	FEED TYPE
2837268-1	B	FINE CRIMP HEIGHT ADJUST	MECHANICAL
2837268-2	B	FINE CRIMP HEIGHT ADJUST	PNEUMATIC
7-2837268-1	B	MECHANICAL AND CRIMP TOOLING KIT	MECHANICAL
7-2837268-2	B	PNEUMATIC AND CRIMP TOOLING KIT	PNEUMATIC
7-2837268-7	A	CRIMP TOOLING KIT	-

ATLANTIC VERSION TERMINATOR INTERFACE ADAPTER



APPLICATOR DATA		
CRIMP	SIZE	TYPE
WIRE	2.03 mm [1.080]	○
INSUL	-	-

APPLICATOR INSTRUCTIONS
408-35042

TERMINAL DATA: CONEXCON TERMINAL TE CRIMP SPECIFICATION			
TERMINAL NAME: CLAW CLIP TERMINAL			
WIRE STRIP LENGTH		TERMINAL INSULATION DIAMETER RANGE	
6.89-7.65 mm [1.271-.301 IN]		∅5.60-6.00 mm [1.220-.236 IN]	
TERMINAL APPLICATION SPECIFICATION	NONE		
TERMINALS APPLIED			
TE TERMINAL	CONEXCON TERMINAL	TE TERMINAL	CONEXCON TERMINAL
3311206-1	630-BS		

WIRE SIZE	CRIMP HEIGHT mm [INCH]	CRIMP HEIGHT REFERENCE SETTING
18 AWG	1.57+/-0.05 [1.062+/-0.002]	7.8
0.75mm2	1.47+/-0.05 [1.058+/-0.002]	8.8

- RECOMMENDED SPARE PARTS
- REFER TO SUPPLIED INSTRUCTION SHEET FOR CLEANING, LUBRICATION AND STORAGE OF APPLICATOR.
- CRIMP HEIGHT REFERENCE SETTING WAS THE SETTING USED WHEN THE APPLICATOR WAS QUALIFIED AT THE FACTORY. ADJUSTMENT MAY BE NECESSARY WHEN RUNNING APPLICATOR IN THE FIELD.
- TERMINAL LUBRICANT IS RECOMMENDED.
- 5. UNLESS SPECIFIED OTHERWISE TORQUE VALUES SHALL BE USED PER DOCUMENT 101-35000.
- POSITION ITEM #19 IN FRONT OF ITEM #5 TO STRIP ON WIRE INSULATION.

***WARNING**
ON INSTALLATION, SET WIRE DISC TO CRIMP HEIGHT REFERENCE SETTING FOR LARGEST WIRE SIZE. CRIMP HEIGHT REFERENCE SETTINGS GREATER THAN THE VALUE SHOWN MAY CAUSE DAMAGE TO THE CRIMP TOOLING, REFER TO THE INSTRUCTION SHEET FOR PROPER SETUP AND ADJUSTMENTS.

ATLANTIC VERSION
Shown on sheets 1 of 4 & 2 of 4
(Pacific version shown on sheets 3 of 4 & 4 of 4)

LOC	DIST	REVISIONS					
A	66	P	LTN	DESCRIPTION	DATE	DWN	APVD
		A		RELEASED	28APR2018	KH	TE
		B		ECR-19-002422	15FEB2019	FJ	YY

-	2	2	2	2	2168083-1	SCR, SKT HD CAP, RoHS, M3 X 8.0	269	
-	1	1	1	1	1633782-1	FENCE	267	
-	1	-	1	-	2119640-1	PUSH ROD, AIR FEED	250	
-	1	-	1	-	1803259-1	BUSHING, FLANGED	249	
-	1	-	1	-	2119641-1	FEED CAM, AIR FEED	248	
-	1	1	1	1	7-18023-7	SCR, SKT HD CAP M3 X 4.0	241	
-	-	1	-	1	2119580-1	MECHANICAL FEED ASSEMBLY	239	
-	1	-	1	-	2063440-1	AIR FEED MODULE	238	
-	2	-	2	-	21045-3	RING, RETAIN, EXTERN, 3/16 CRESCENT	172	
-	REF	REF	REF	REF	994970-2	COUNTER, MAGNETIC	164	
-	1	-	1	-	240638-1	SPRING, FEED FINGER	163	
-	1	-	1	-	3-23627-7	PIN, RETAIN, GRVD, 3/16 X .854	137	
-	1	-	1	-	2119799-1	HOLDER, FEED FINGER, AF	136	
-	1	1	1	1	2119955-1	ASSY, LUBRICATOR, SIDE FEED	113	
-	1	1	1	1	2844908-1	SCREW, LOCKING	99	
-	1	1	1	1	2844907-1	POST, LOCKING	98	
-	1	1	1	1	455888-4	SPACER, CRIMPER	82	
-	1	1	1	1	1803607-1	DOCUMENTATION PACKAGE	71	
-	1	1	1	1	2119791-5	DEPRESSOR, WIRE	70	
-	1	1	1	1	2119943-1	WASHER, SPACER	69	
-	1	1	1	1	2119740-1	TAG, IDENTIFICATION	67	
-	2	2	2	2	2168078-1	SCREW, DRIVE, RH, RoHS, 2 x .188	66	
-	1	1	1	1	2168083-2	SCR, SKT HD CAP, RoHS, M4 X 8.0	60	
-	1	1	1	1	5-18022-5	SCR, HEX HD CAP, M4 X 6.0	59	
-	1	1	1	1	1338685-1	PAWL, FEED	56	
-	4	4	4	4	2168083-3	SCR, SKT HD CAP, RoHS, M4 X 12.0	54	
-	1	2	1	2	18023-9	SCR, SKT HD CAP M4 X 6.0	49	
-	-	1	-	1	2119652-1	FEED CAM, PRE FEED	48	
-	-	1	-	1	2119653-1	FEED CAM, POST FEED	47	
-	1	1	1	1	1803583-9	APPLICATOR BASIC ASSEMBLY, SF	46	
-	1	1	1	1	1803515-1	RAM ASSEMBLY, SF ATLANTIC	44	
-	1	1	1	1	1803602-1	SCR, BHSC, RoHS (M8 X 25)	41	
-	1	1	1	1	469465-4	STOP, WIRE	34	
-	2	2	2	2	2079383-5	SCR, BHSC, RoHS (M4 X 20)	33	
-	2	2	2	2	2-2844962-1	SPACER, CYLINDRICAL, STRIP GUIDE	30	
-	1	1	1	1	2844992-1	ASSEMBLY, STRIP GUIDE	29	
-	1	1	1	1	455888-3	SPACER, CRIMPER	28	
-	1	1	1	1	1320928-2	STRIP GUIDE	24	
-	1	1	1	1	2168083-2	SCR, SKT HD CAP, RoHS, M4 X 8.0	21	
-	2	2	2	2	1-18028-2	WASHER, FLAT, REG M4	20	
-	1	1	1	1	2119533-2	STRIPPER, SIDE FEED	19	
-	1	1	1	1	2119806-1	INSERT, SHEAR	13	
-	1	1	1	1	3-22280-3	SPRING, COMPRESSION	12	
-	1	1	1	1	1-356885-4	STOP, SHEAR	11	
-	1	1	1	1	2119805-1	SHEAR HOLDER, FRONT	10	
-	1	1	1	1	1803095-6	FLOATING SHEAR, FRONT	9	
-	1	2	2	1	1	4-1803190-2	ANVIL, WIRE	8
-	-	-	-	-	-	-	7	
-	-	-	-	-	-	-	6	
-	1	1	1	1	2119757-4	DEPRESSOR, SHEAR	5	
-	-	-	-	-	-	-	4	
-	-	-	-	-	-	-	3	
-	1	1	1	1	455888-3	SPACER, CRIMPER	2	
-	1	2	2	1	1	459492-8	CRIMPER, WIRE O	1
-	77	72	71	-2	-1	PART NO	DESCRIPTION	ITEM NO

DIMENSIONS:		TOLERANCES UNLESS OTHERWISE SPECIFIED:		DWN H. HUANG CHK L. ZHANG APVD L. ZHANG		28APR2018 28APR2018 28APR2018		TE Connectivity Harrisburg, PA 17105-3608	
mm	0 PLC ± 1 PLC ± 3 PLC ± 4 PLC ± ANGLES ±	mm	±	NAME		Ocean Side Feed Applicator		RESTRICTED TO	
MATERIAL	FINISH	WEIGHT		SCALE		SHEET		REV	
-	-	-		1:2		1 OF 4		B	

LOC		DIST		REVISIONS			
A	66	P	LTM	DESCRIPTION	DATE	DWN	APVD
		-		SEE SHEET 1	-	-	-

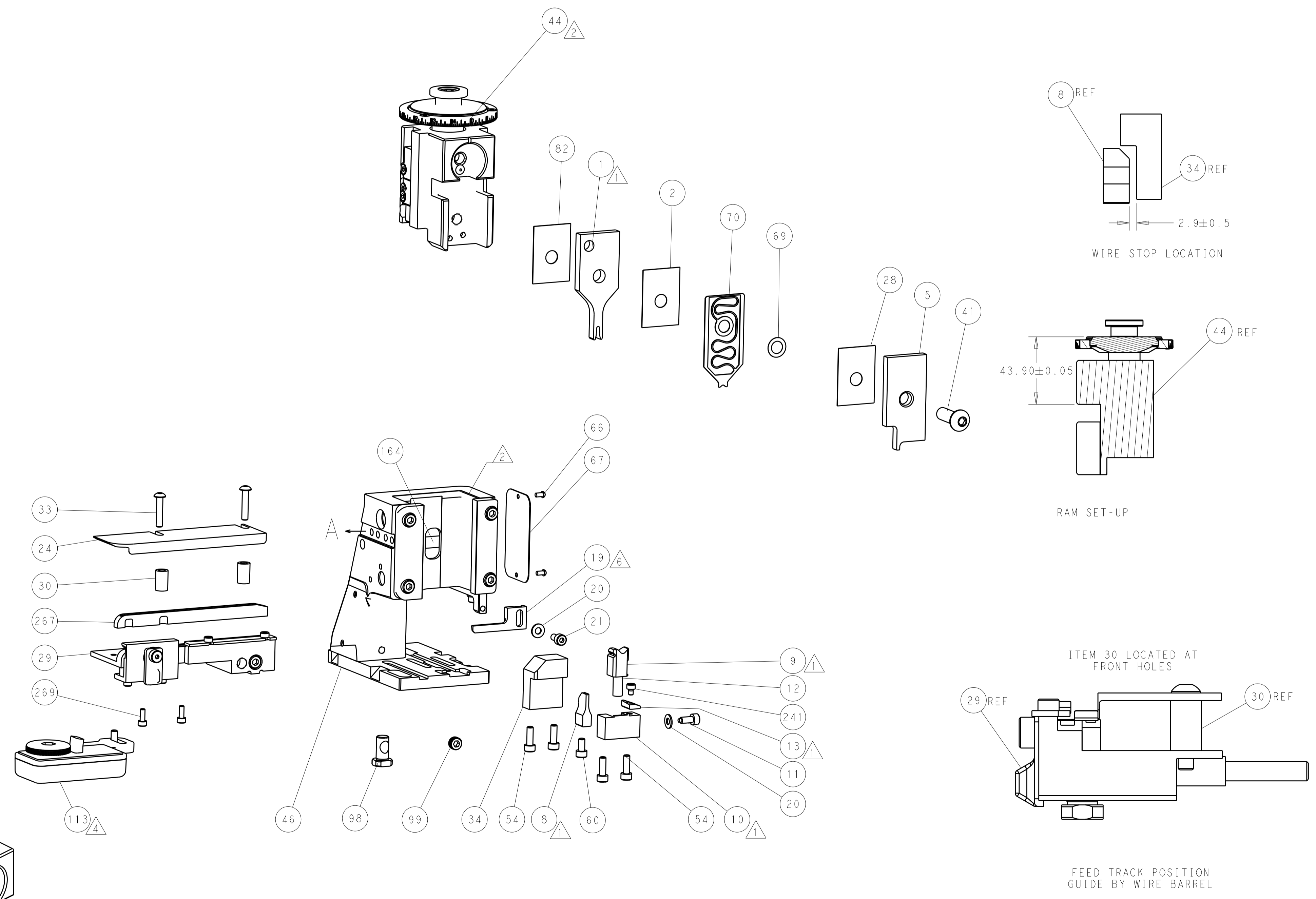
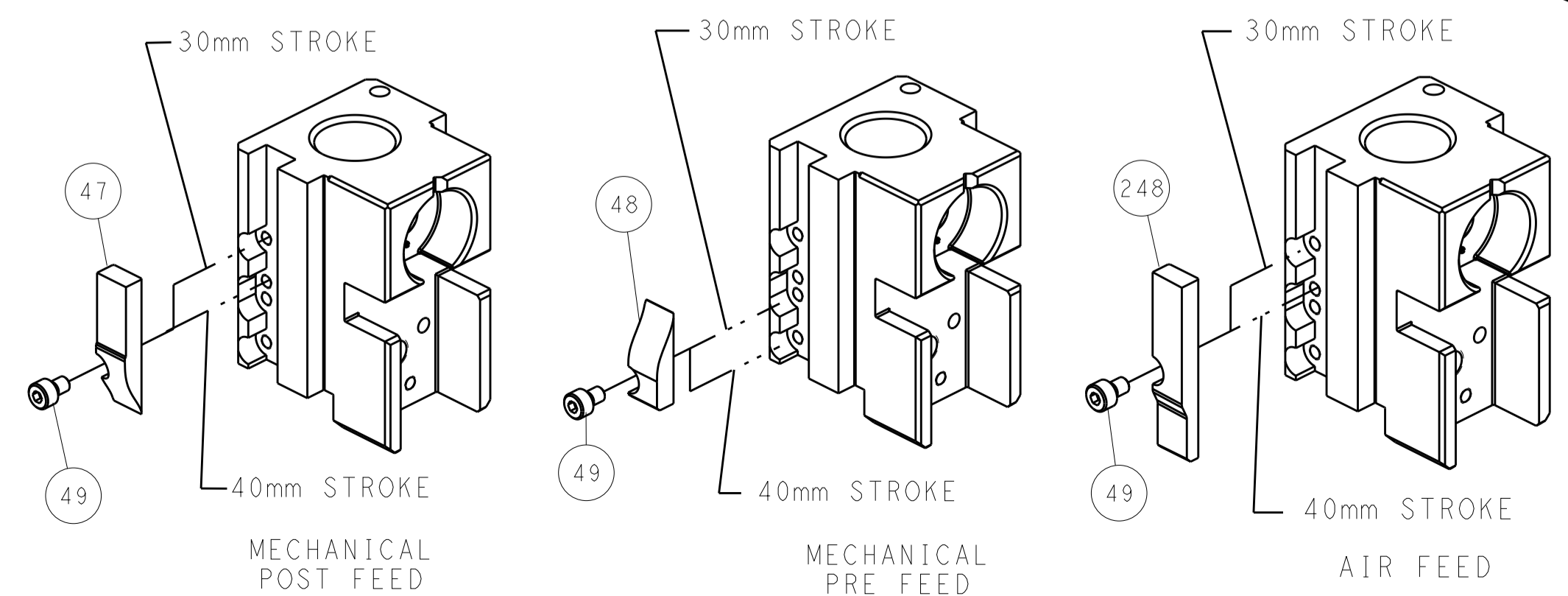
FEED TYPE MECHANICAL



PNEUMATIC



CAM POSITIONS



WIRE STOP LOCATION

RAM SET-UP

ITEM 30 LOCATED AT FRONT HOLES

FEED TRACK POSITION GUIDE BY WIRE BARREL

ATLANTIC VERSION
 Shown on sheets 1 of 4 & 2 of 4
 (Pacific version shown on sheets 3 of 4 & 4 of 4)

DIMENSIONS:		TOLERANCES UNLESS OTHERWISE SPECIFIED:		DWN H. HUANG 28APR2018		TE Connectivity	
mm	0 PLC ±	1 PLC ±	2 PLC ±	3 PLC ±	4 PLC ±	Harrisburg, PA 17105-3608	
MATERIAL:		FINISH:		CHK L. ZHANG 28APR2018		NAME Ocean Side Feed Applicator	
				APVD L. ZHANG 28APR2018		PRODUCT SPEC	
						APPLICATION SPEC	
						SIZE CAGE CODE DRAWING NO RESTRICTED TO	
						A1 00779 C=2837268	
				WEIGHT		Customer Accessible Production Drawing	
				SCALE 1:2		SHEET 2 OF 4 REV B	

PART NUMBER	REVISION	DESCRIPTION	FEED TYPE
2-2837268-1	B	FINE CRIMP HEIGHT ADJUST	MECHANICAL
2-2837268-2	B	FINE CRIMP HEIGHT ADJUST	PNEUMATIC
7-2837268-7	A	CRIMP TOOLING KIT	-

PACIFIC VERSION TERMINATOR
INTERFACE ADAPTER



APPLICATOR DATA		
CRIMP	SIZE	TYPE
WIRE	2.03 mm [.080]	○
INSUL	-	-

APPLICATOR INSTRUCTIONS
408-35042

TERMINAL DATA: CONEXCON TERMINAL TE CRIMP SPECIFICATION			
TERMINAL NAME: CLAW CLIP TERMINAL			
WIRE STRIP LENGTH		TERMINAL INSULATION DIAMETER RANGE	
6.89-7.65 mm [.271-.301 IN]		∅5.60-6.00 mm [.220-.236 IN]	
TERMINAL APPLICATION SPECIFICATION	NONE		
TERMINALS APPLIED ⁴			
TE TERMINAL	CONEXCON TERMINAL	TE TERMINAL	CONEXCON TERMINAL
3311206-1	630-BS		

WIRE SIZE	CRIMP HEIGHT mm [INCH]	CRIMP HEIGHT REFERENCE SETTING
18 AWG	1.57+/-0.05 [.062+/-0.002]	7.8
0.75mm ²	1.47+/-0.05 [.058+/-0.002]	8.8



- ¹ RECOMMENDED SPARE PARTS
- ² REFER TO SUPPLIED INSTRUCTION SHEET FOR CLEANING, LUBRICATION AND STORAGE OF APPLICATOR.
- ³ CRIMP HEIGHT REFERENCE SETTING WAS THE SETTING USED WHEN THE APPLICATOR WAS QUALIFIED AT THE FACTORY. ADJUSTMENT MAY BE NECESSARY WHEN RUNNING APPLICATOR IN THE FIELD.
- ⁴ TERMINAL LUBRICANT IS RECOMMENDED.
- 5. UNLESS SPECIFIED OTHERWISE TORQUE VALUES SHALL BE USED PER DOCUMENT 101-35000.
- ⁶ POSITION ITEM #19 IN FRONT OF ITEM #5 TO STRIP ON WIRE INSULATION.

***WARNING**
ON INSTALLATION, SET WIRE DISC TO CRIMP HEIGHT REFERENCE SETTING FOR LARGEST WIRE SIZE. CRIMP HEIGHT REFERENCE SETTINGS GREATER THAN THE VALUE SHOWN MAY CAUSE DAMAGE TO THE CRIMP TOOLING, REFER TO THE INSTRUCTION SHEET FOR PROPER SETUP AND ADJUSTMENTS.

PACIFIC VERSION
Shown on sheets 3 of 4 & 4 of 4
(Atlantic version shown on sheets 1 of 4 & 2 of 4)

LOC	DIST	REV	DATE	BY	APPV
A	66	-	-	-	-

REV	DATE	BY	APPV	DESCRIPTION	DATE	BY	APPV
-	2	2		2168083-1	SCR, SKT HD CAP, RoHS, M3 X 8.0		269
-	1	1		1633782-1	FENCE		267
-	1	-		2119640-1	PUSH ROD, AIR FEED		250
-	1	-		1803259-1	BUSHING, FLANGED		249
-	1	1		7-18023-7	SCR, SKT HD CAP M3 X 4.0		241
-	-	1		2119580-1	MECHANICAL FEED ASSEMBLY		239
-	1	-		2063440-1	AIR FEED MODULE		238
-	2	-		21045-3	RING, RETAIN, EXTERN, 3/16 CRESCENT		172
-	REF	REF		994970-2	COUNTER, MAGNETIC		164
-	1	-		240638-1	SPRING, FEED FINGER		163
-	1	-		2119641-2	FEED CAM, AIR FEED		151
-	1	1		2168083-8	SCR, SKT HD CAP, RoHS, M4 X 16		144
-	4	4		2168083-9	SCR, SKT HD CAP, RoHS, M4 X 20		143
-	-	1		2119653-2	FEED CAM, POST FEED		142
-	1	1		1-1803583-0	APPLICATOR BASIC ASSEMBLY, SF		141
-	1	1		1803516-1	RAM ASSEMBLY, SF PACIFIC		140
-	1	-		3-23627-7	PIN, RETAIN, GRVD, 3/16 X .854		137
-	1	-		2119799-1	HOLDER, FEED FINGER, AF		136
-	1	1		2119955-1	ASSY, LUBRICATOR, SIDE FEED		113
-	1	1		2844908-1	SCREW, LOCKING		99
-	1	1		2844907-1	POST, LOCKING		98
-	1	1		455888-4	SPACER, CRIMPER		82
-	1	1		1803607-1	DOCUMENTATION PACKAGE		71
-	1	1		2119791-5	DEPRESSOR, WIRE		70
-	1	1		2119943-1	WASHER, SPACER		69
-	1	1		2119740-1	TAG, IDENTIFICATION		67
-	2	2		2168078-1	SCREW, DRIVE, RH, RoHS, 2 x .188		66
-	1	1		5-18022-5	SCR, HEX HD CAP, M4 X 6.0		59
-	1	1		1338685-1	PAWL, FEED		56
-	1	2		18023-9	SCR, SKT HD CAP M4 X 6.0		49
-	-	1		2119652-1	FEED CAM, PRE FEED		48
-	1	1		1803602-1	SCR, BHSC, RoHS (M8 X 25)		41
-	1	1		469465-4	STOP, WIRE		34
-	2	2		2079383-5	SCR, BHSC, RoHS (M4 X 20)		33
-	2	2		2-2844962-1	SPACER, CYLINDRICAL, STRIP GUIDE		30
-	1	1		2844992-1	ASSEMBLY, STRIP GUIDE		29
-	1	1		455888-3	SPACER, CRIMPER		28
-	1	1		1320928-2	STRIP GUIDE		24
-	1	1		2168083-2	SCR, SKT HD CAP, RoHS, M4 X 8.0		21
-	2	2		1-18028-2	WASHER, FLAT, REG M4		20
-	1	1		2119533-2	STRIPPER, SIDE FEED		19
-	1	1		2119806-1	INSERT, SHEAR		13
-	1	1		3-22280-3	SPRING, COMPRESSION		12
-	1	1		1-356885-4	STOP, SHEAR		11
-	1	1		2119805-1	SHEAR HOLDER, FRONT		10
-	1	1		1803095-6	FLOATING SHEAR, FRONT		9
-	1	1		4-1803190-2	ANVIL, WIRE		8
-	-	-		-	-		7
-	-	-		-	-		6
-	1	1		2119757-4	DEPRESSOR, SHEAR		5
-	-	-		-	-		4
-	-	-		-	-		3
-	1	1		455888-3	SPACER, CRIMPER		2
-	1	1		459492-8	CRIMPER, WIRE O		1
-	77	-22	-21	PART NO	DESCRIPTION		ITEM NO

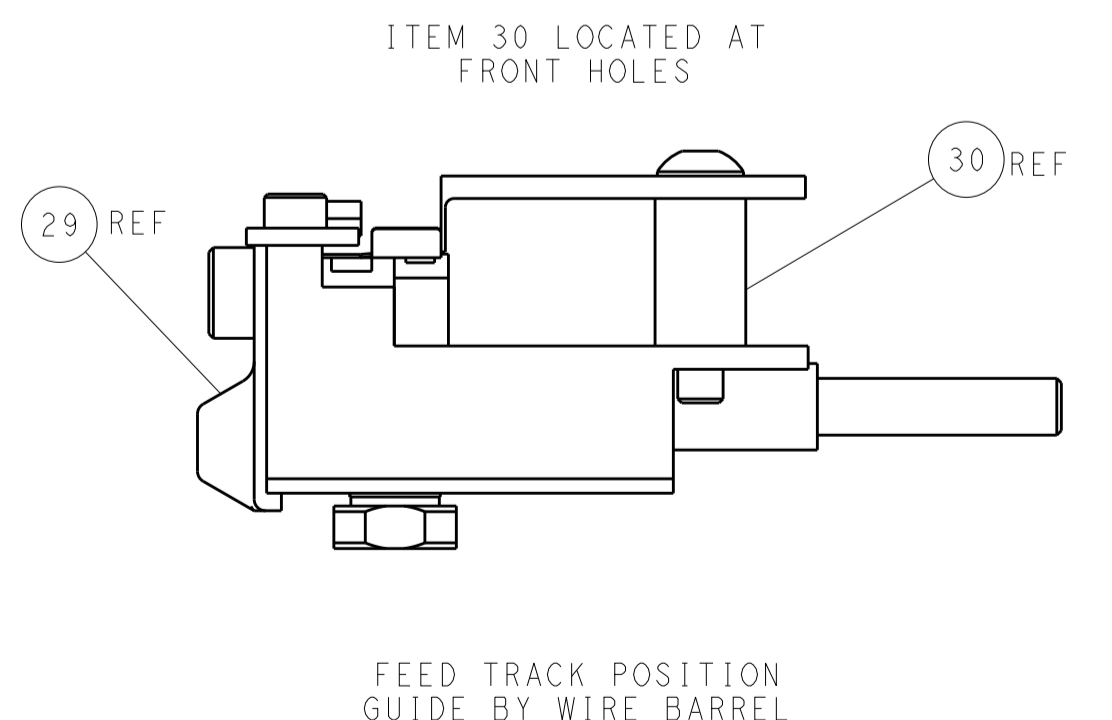
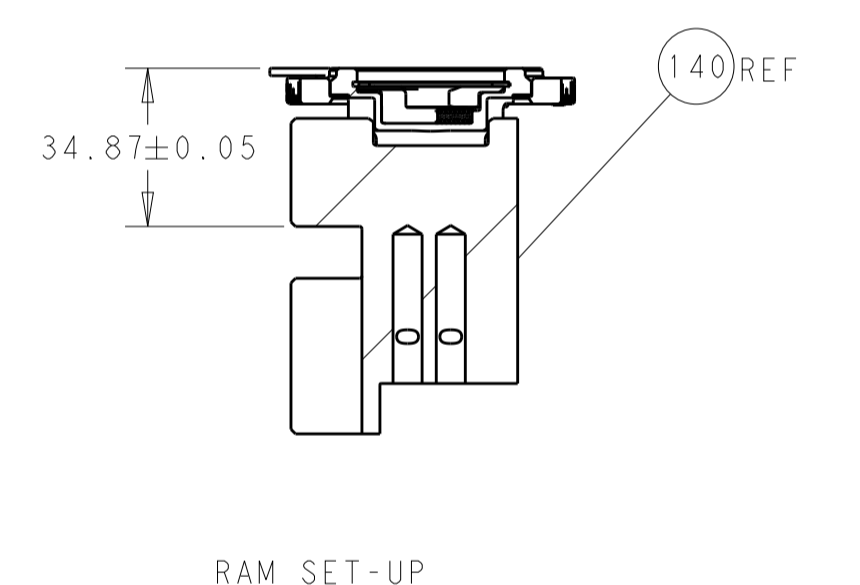
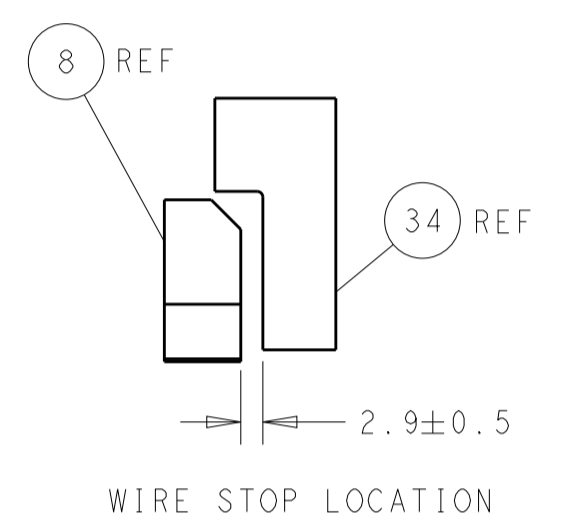
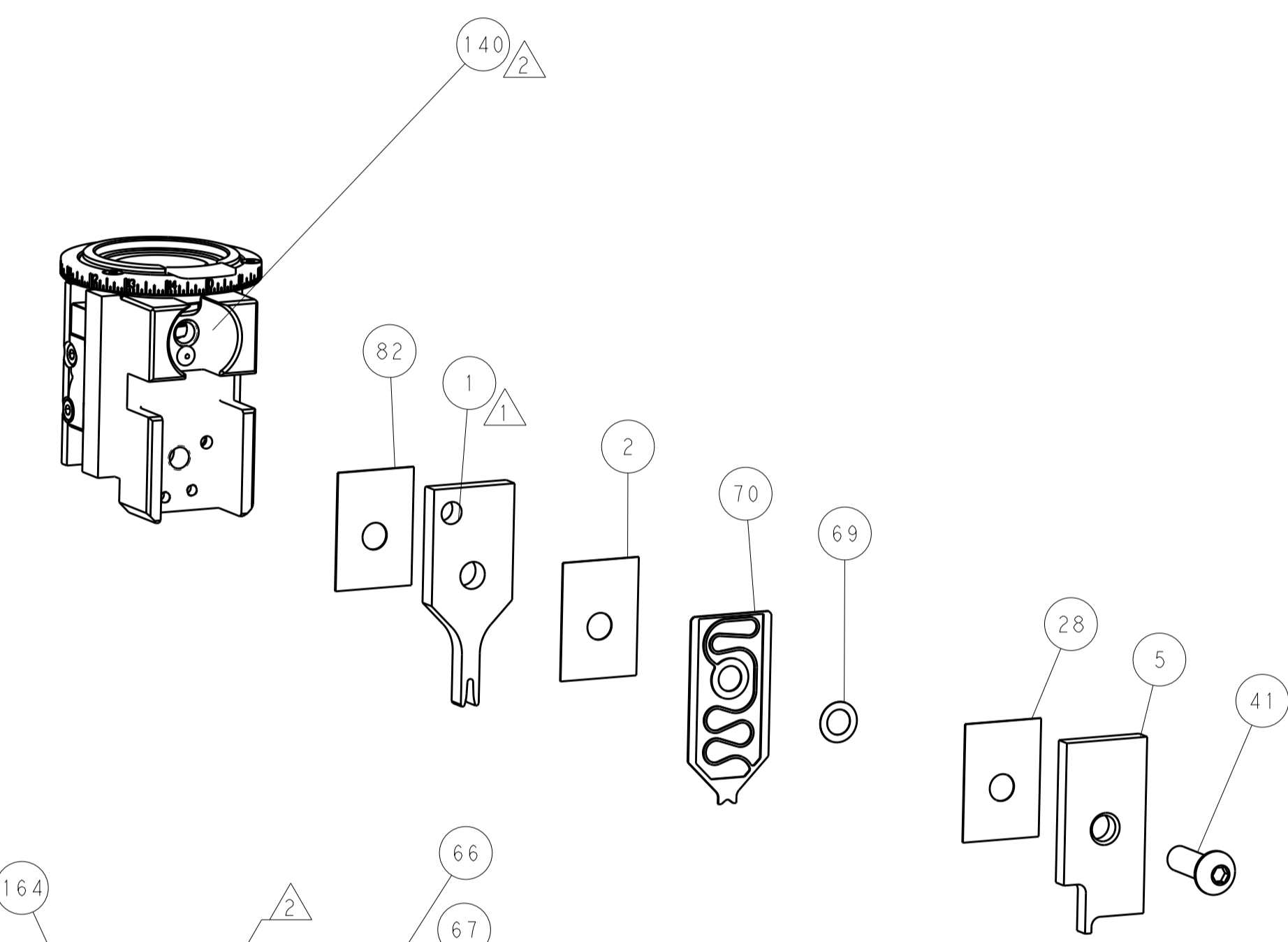
<small>THIS DRAWING IS UNPUBLISHED. IT IS THE PROPERTY OF TYCO ELECTRONICS CORPORATION. ALL RIGHTS RESERVED. IT IS TO BE USED ONLY FOR THE PURPOSES SPECIFIED HEREIN. IT IS TO BE KEPT IN CONFIDENTIALITY AND NOT TO BE REPRODUCED OR TRANSMITTED IN ANY FORM OR BY ANY MEANS, ELECTRONIC OR MECHANICAL, INCLUDING PHOTOCOPYING, RECORDING, OR BY ANY INFORMATION STORAGE AND RETRIEVAL SYSTEM. PERMISSION TO REPRODUCE THIS DRAWING IN WHOLE OR IN PART IS GRANTED BY TYCO ELECTRONICS CORPORATION TO THE USER OF THIS DRAWING FOR THE USER'S OWN USE ONLY. PERMISSION TO REPRODUCE THIS DRAWING FOR OTHER PURPOSES MUST BE OBTAINED FROM TYCO ELECTRONICS CORPORATION.</small>		DWN H. HUANG 28APR2018 CHK L. ZHANG 28APR2018 APPV L. ZHANG 28APR2018	TE Connectivity Harrisburg, PA 17105-3608
DIMENSIONS: mm 		TOLERANCES UNLESS OTHERWISE SPECIFIED: 0 PLC ± 1 PLC ± 2 PLC ± 3 PLC ± 4 PLC ± ANGLES ± FINISH	NAME Ocean Side Feed Applicator SIZE CAGE CODE DRAWING NO A1 00779 C=2837268 RESTRICTED TO Customer Accessible Production Drawing SCALE 1:2 SHEET 3 OF 4 REV B

LOC		DIST		REVISIONS			
A	66	P	LTM	DESCRIPTION	DATE	DWN	APVD
		-		SEE SHEET 1			

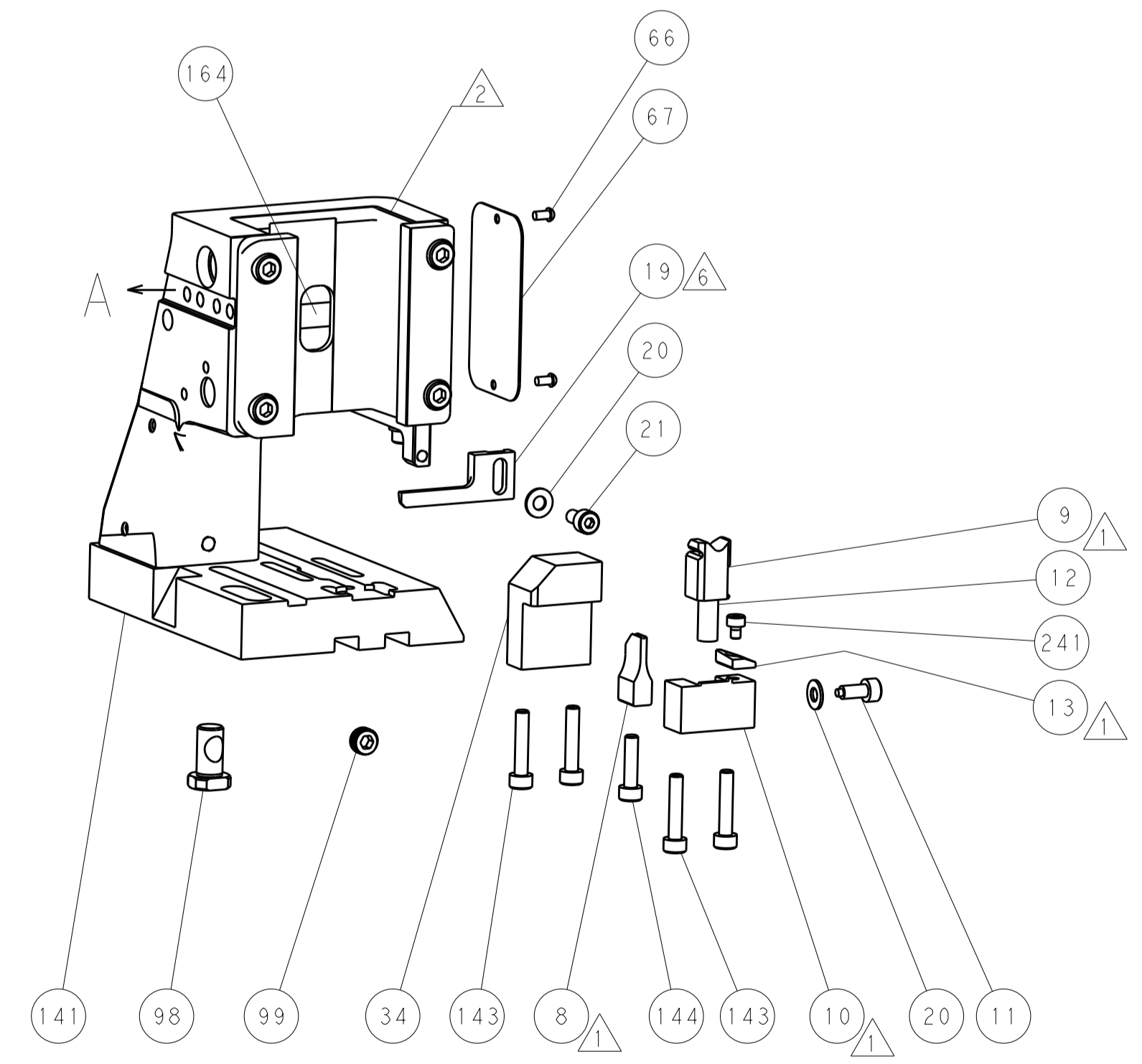
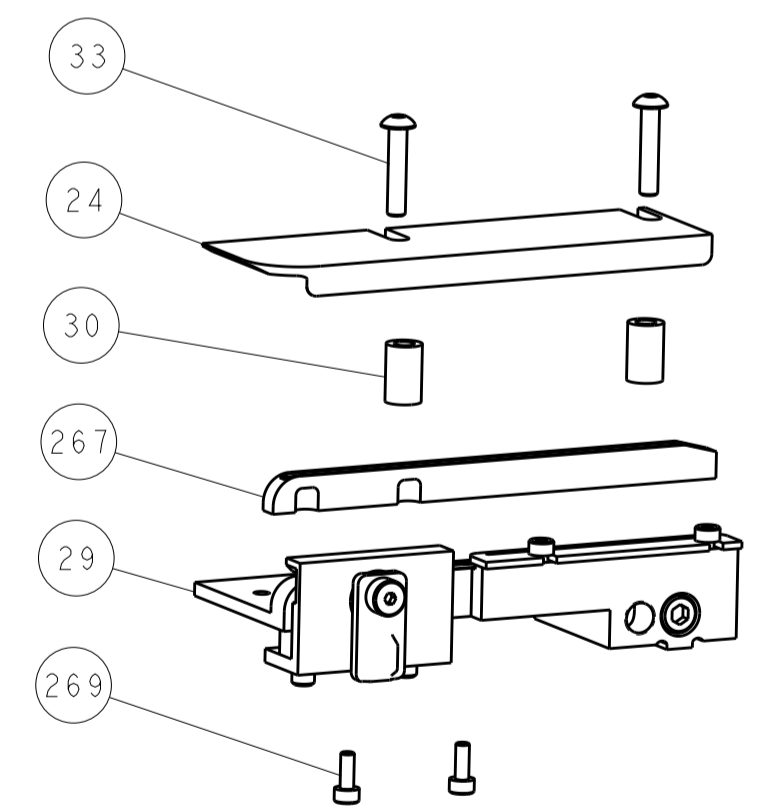
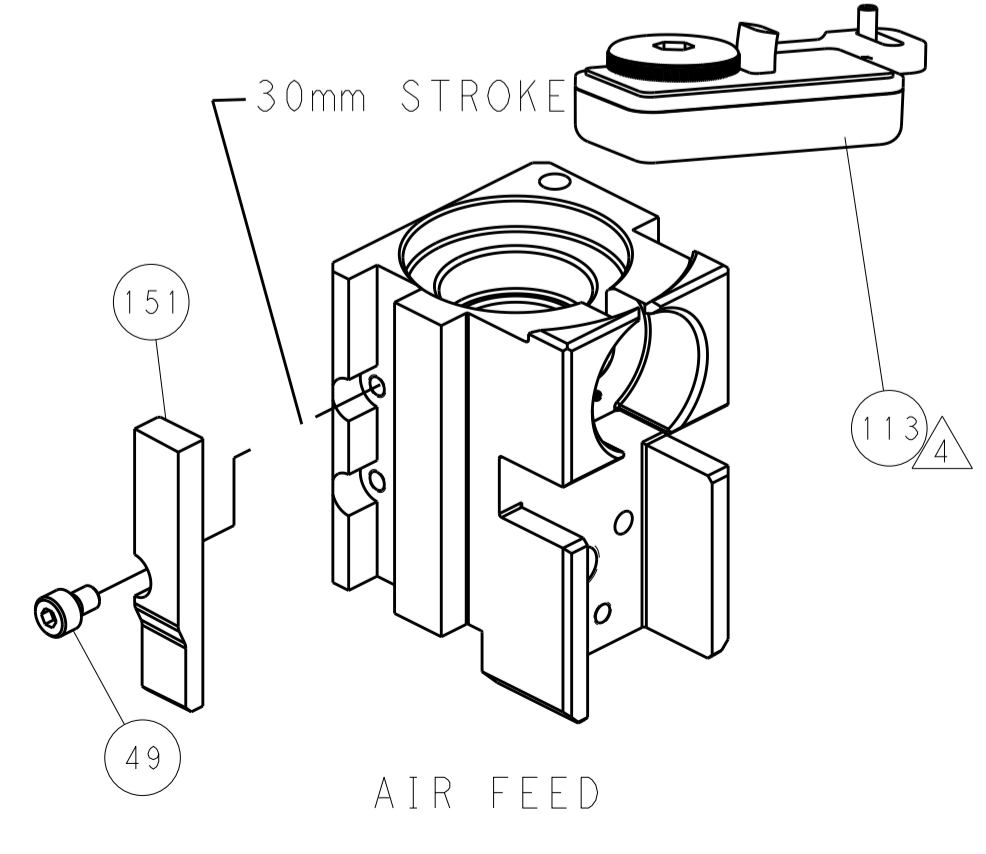
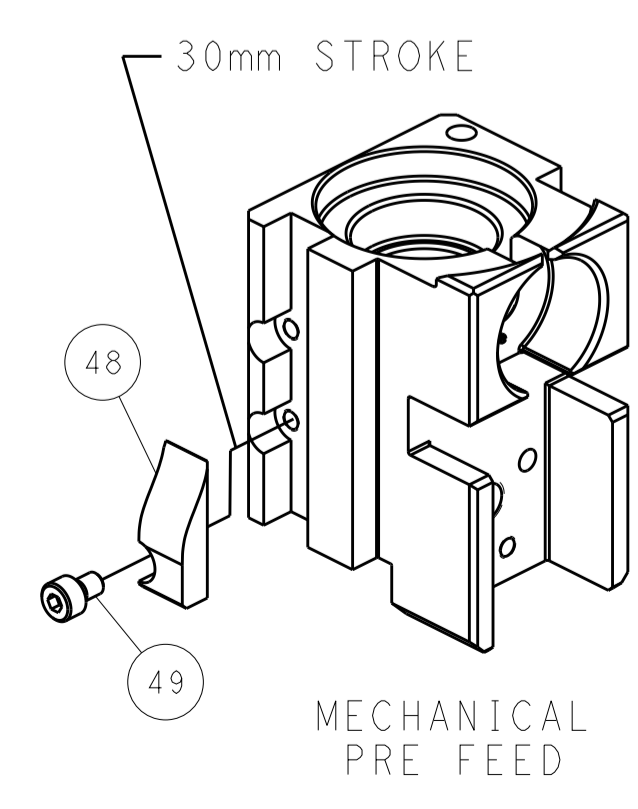
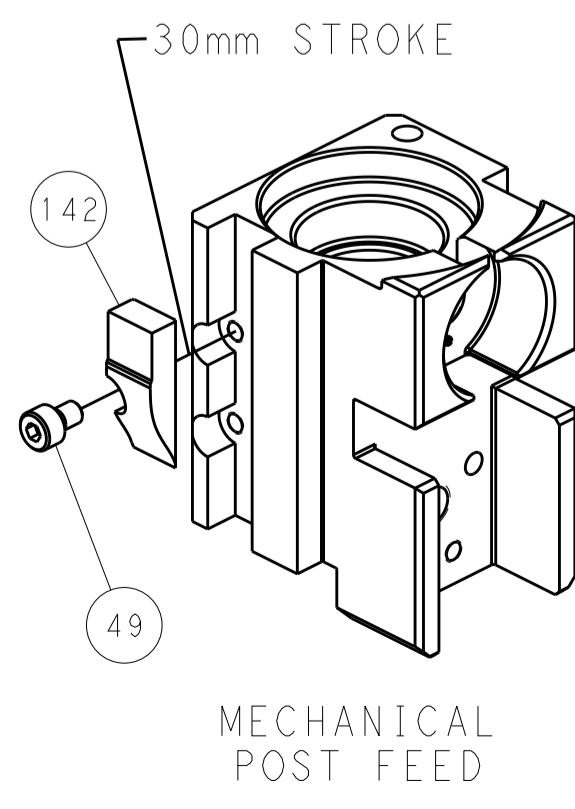
FEED TYPE MECHANICAL



PNEUMATIC



CAM POSITIONS



PACIFIC VERSION
 Shown on sheets 3 of 4 & 4 of 4
 (Atlantic version shown on sheets 1 of 4 & 2 of 4)

DIMENSIONS:		TOLERANCES UNLESS OTHERWISE SPECIFIED:		DWN: H. HUANG 28APR2018		STE TE Connectivity	
mm		0 PLC ±		CHK: L. ZHANG 28APR2018		Harrisburg, PA 17105-3608	
HOLE		1 PLC ±		APVD: L. ZHANG 28APR2018		NAME: Ocean Side Feed Applicator	
MATERIAL:		2 PLC ±		PRODUCT SPEC:		SIZE: CAGE CODE: DRAWING NO:	
		3 PLC ±		APPLICATION SPEC:		RESTRICTED TO:	
		4 PLC ±		WEIGHT:		A 00779 C=2837268	
		ANGLES ±		Customer Accessible Production Drawing		SCALE: 1:2 SHEET 4 OF 4 REV B	