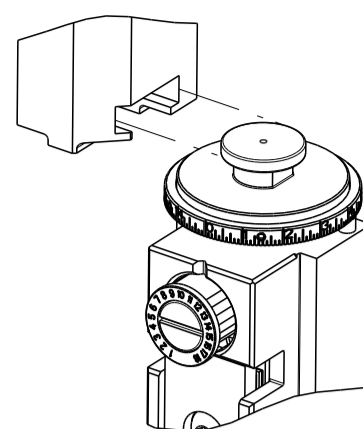


PART NUMBER	REVISION	DESCRIPTION	FEED TYPE
2837303-2	B	FINE CRIMP HEIGHT ADJUST	PNEUMATIC
7-2837303-2	B	PNEUMATIC AND CRIMP TOOLING KIT	PNEUMATIC
7-2837303-7	A	CRIMP TOOLING KIT	-

ATLANTIC VERSION TERMINATOR INTERFACE ADAPTER



APPLICATOR DATA		
CRIMP	SIZE	TYPE
WIRE	3.60 mm [.142]	F
INSUL	6.50 mm [.256]	O

APPLICATOR INSTRUCTIONS  
408-35042

TERMINAL DATA: DELPHI TERMINAL DELPHI CRIMP SPECIFICATION	
TERMINAL NAME: TAXI TERMINAL M/P 630	
WIRE STRIP LENGTH	TERMINAL INSULATION DIAMETER RANGE
4.40-5.16 mm [.173-.203 IN]	Ø
TERMINAL APPLICATION SPECIFICATION	12064735 Rev 2014-07-28
PG 3 OF 11	

TERMINALS APPLIED				
TE TERMINAL	DELPHI TERMINAL	TE SEAL	DELPHI SEAL	SEAL INSULATION DIAMETER RANGE
1949323-1	12064737	1949378-2	15324996	3.61-4.50
		1949378-4	15324994	2.81-3.75
		1949378-6	12059258	2.81-3.75

WIRE SIZE	CRIMP HEIGHT mm [INCH]	CRIMP HEIGHT REFERENCE SETTING
3mm <sup>2</sup> OR 12AWG	2.05+/-0.05 [.081+/- .002]	9.0

\*WARNING

ON INSTALLATION, SET WIRE DISC TO CRIMP HEIGHT REFERENCE SETTING FOR LARGEST WIRE SIZE. CRIMP HEIGHT REFERENCE SETTINGS GREATER THAN THE VALUE SHOWN MAY CAUSE DAMAGE TO THE CRIMP TOOLING. REFER TO THE INSTRUCTION SHEET FOR PROPER SETUP AND ADJUSTMENTS.

- 1 RECOMMENDED SPARE PARTS
- 2 REFER TO SUPPLIED INSTRUCTION SHEET FOR CLEANING, LUBRICATION AND STORAGE OF APPLICATOR.
- 3 APPLY PART NUMBER 2-23419-6 LOCTITE TO THREADS OF ITEM 242.
- 4 CRIMP HEIGHT REFERENCE SETTING WAS THE SETTING USED WHEN THE APPLICATOR WAS QUALIFIED AT THE FACTORY. ADJUSTMENT MAY BE NECESSARY WHEN RUNNING APPLICATOR IN THE FIELD.
- 5 TERMINAL LUBRICANT IS RECOMMENDED.
- 6 UNLESS SPECIFIED OTHERWISE TORQUE VALUES SHALL BE USED PER DOCUMENT, 101-35000.
- 7 TERMINAL PITCH NOT COMPATIBLE WITH MECHANICAL FEED.
- 8 CUT TO LENGTH AT ASSEMBLY.
- 9 APPLY TORO-SEAL IN ALLEN SOCKET TO FILL HOLE AFTER FLAT HD HAS BEEN ADJUSTED TO CORRECT HEIGHT AT QUALIFICATION.

LOC	DIST	REVISIONS					
		P	LTN	DESCRIPTION	DATE	OWN	APVD
A	66	1		DEVELOPMENT	08JUN2018	TB	TE
		A		RELEASE	09JUL2018	AW	GB
		B		ECR-22-155492	130C12022	TB	RK

-	1	1	7-18023-7	SCR, SKT HD CAP M3 X 4.0	283
-	1	1	2280441-1	INSERT, SHEAR	282
-	2	2	2168083-1	SCR, SKT HD CAP, RoHS, M3 X 8.0	269
-	1	1	1633782-4	FENCE	267
-	1	1	2119641-1	FEED CAM, AIR FEED	248
-	1	1	2119082-6	CAM, SNAIL, INSULATION ADJUSTMENT	244
-	1	1	2079764-1	WASHER, WAVE SPRING, CREST-TO-CREST	243
-	1	1	2119083-1	RETAINER, INSULATION DIAL	242
-	1	1	7-18023-7	SCR, SKT HD CAP M3 X 4.0	241
-	1	1	2844940-1	AIR FEED MODULE	238
-	1	1	356885-4	STOP, SHEAR	237
-	REF	REF	994970-2	COUNTER, MAGNETIC	164
-	1	1	2119955-1	ASSY, LUBRICATOR, SIDE FEED	113
-	1	1	2844908-1	SCREW, LOCKING	99
-	1	1	2844907-1	POST, LOCKING	98
-	1	1	1-690438-0	FRONT STRIP GUIDE	96
-	1	1	455888-7	SPACER, CRIMPER	82
-	1	1	240641-2	SPACER	81
-	2	2	2079383-4	SCR, BHSC, RoHS (M4 X 8)	79
-	1	1	1803096-1	EXTENSION PLATE	78
-	1	1	1803607-3	DOCUMENTATION PACKAGE	71
-	1	1	2119791-7	DEPRESSOR, WIRE	70
-	1	1	2119943-1	WASHER, SPACER	69
-	1	1	2119740-1	TAG IDENTIFICATION	67
-	2	2	2168078-1	SCREW, DRIVE, RH, RoHS, 2 x .188	66
-	1	1	2168083-2	SCR, SKT HD CAP, RoHS, M4 X 8.0	60
-	1	1	5-18022-5	SCR, HEX HD CAP, M4 X 6.0	59
-	1	1	5018030-1	NUT, HEX, REG, RoHS, M3	58
-	1	1	1-2168083-3	SCR, SKT HD CAP, RoHS, M3 X 16	57
-	1	1	1338683-8	FEED PAWL	56
-	4	4	2168083-3	SCR, SKT HD CAP, RoHS, M4 X 12.0	54
-	2	2	1-2168083-5	SCR, SKT HD CAP, RoHS, M4 X 30	53
-	1	1	1803382-6	HOLD DOWN, SPRING LOADED	50
-	1	1	18023-9	SCR, SKT HD CAP M4 X 6.0	49
-	1	1	1-1803583-7	APPLICATOR BASIC ASSEMBLY, SF	46
-	1	1	1803515-1	RAM ASSEMBLY, SF ATLANTIC	44
-	1	1	1803602-1	SCR, BHSC, RoHS (M8 X 25)	41
-	2	2	2079383-5	SCR, BHSC, RoHS (M4 X 20)	33
-	2	2	2-2844962-1	SPACER, CYLINDRICAL, STRIP GUIDE	30
-	1	1	2844992-5	ASSEMBLY, STRIP GUIDE	29
-	2	2	22283-1	SPRING, COMPRESSION	27
-	1	1	240792-1	DRAG, TERMINAL	25
-	1	1	1320928-4	STRIP GUIDE	24
-	1	1	2168083-2	SCR, SKT HD CAP, RoHS, M4 X 8.0	21
-	2	2	1-18028-2	WASHER, FLAT, REG M4	20
-	1	1	2119533-1	STRIPPER, SIDE FEED	19
-	1	1	1-690463-4	FLOATING SHEAR, REAR	17
-	2	2	1-2168083-1	SCR, SKT HD CAP, RoHS, M3 X 6	16
-	1	1	1-690464-6	SHEAR PLATE, REAR	15
-	1	1	2119862-1	SHEAR HOLDER, REAR	14
-	1	1	2119806-1	INSERT, SHEAR	13
-	2	2	3-22280-3	SPRING, COMPRESSION	12
-	1	1	1-356885-4	STOP, SHEAR	11
-	1	1	2119805-7	SHEAR HOLDER, FRONT	10
-	1	1	318059-9	FLOATING SHEAR, FRONT	9
-	1	2	1-21803320-6	ANVIL, COMBINATION	8
-	1	1	2-240641-6	SPACER	7
-	1	1	2-690468-8	DEPRESSOR SHEAR, REAR	6
-	1	1	1803080-1	DEPRESSOR, SHEAR	5
-	1	1	4-238011-5	BLOCK, CRIMPER SPACER	4
-	1	2	7-1633966-1	CRIMPER, INSULATION O	3
-	1	1	455888-1	SPACER, CRIMPER	2
-	1	2	1633664-3	CRIMPER, WIRE	1

DIMENSIONS:		TOLERANCES UNLESS OTHERWISE SPECIFIED:		MATERIAL:		FINISH:	
mm	0 PLC ±	1 PLC ±	2 PLC ±	3 PLC ±	4 PLC ±	ANGLES ±	FINISH ±

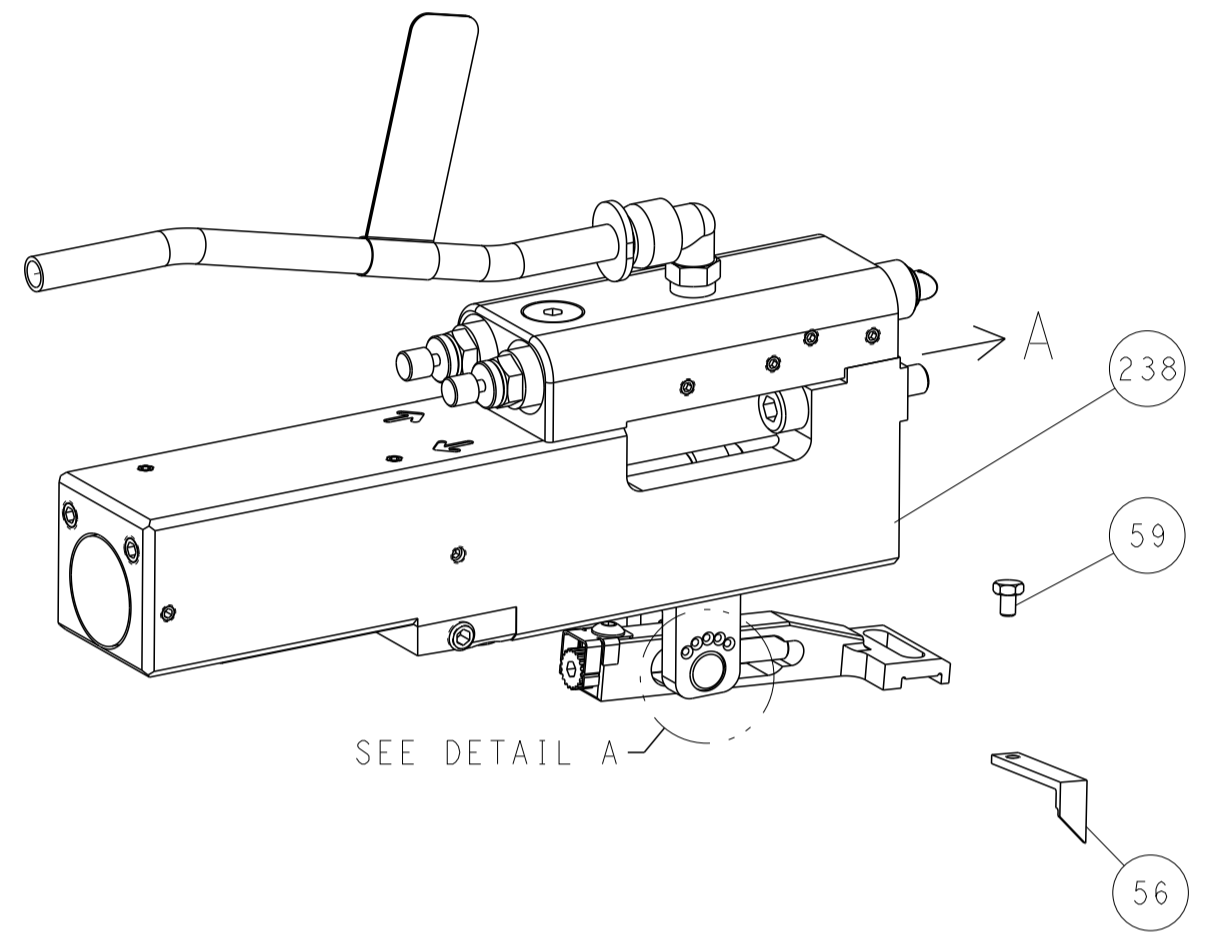
OWN	T. BROOKENS	08JUN2018
CHK	M. HERR	08JUN2018
APVD	T. ELBIN	08JUN2018
NAME	Ocean Side Feed Applicator	
SIZE	CAGE CODE	DRAWING NO
A1	00779	2837303
Customer Accessible Production Drawing		
SCALE	SHEET	REV
1:2	1 OF 4	B

ATLANTIC VERSION  
Shown on sheets 1 of 4 & 2 of 4  
(Pacific version shown on sheets 3 of 4 & 4 of 4)

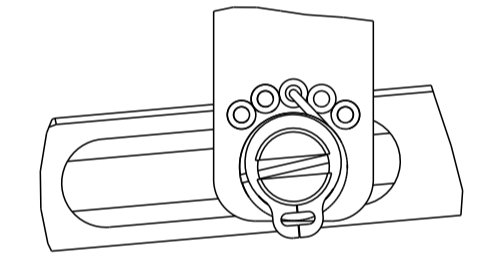
LOC	DIST	REVISIONS					
		P	LTN	DESCRIPTION	DATE	DMN	APVD
A	66	-	-	SEE SHEET 1	-	-	-

# FEED TYPE

## PNEUMATIC

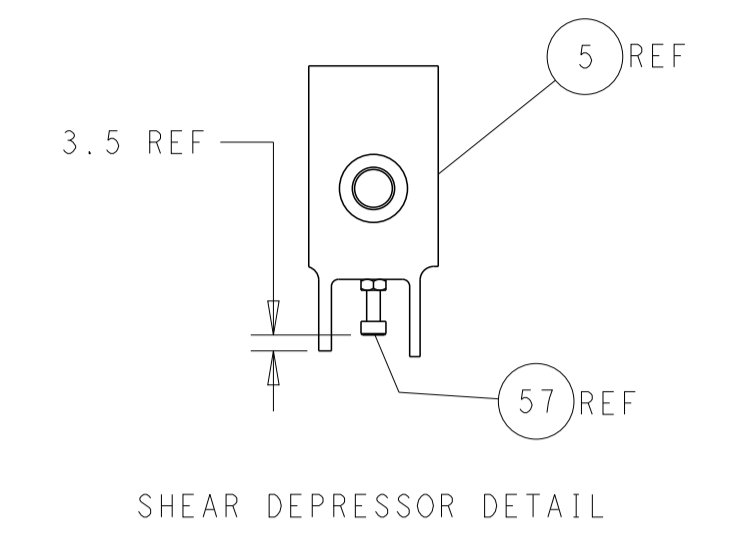
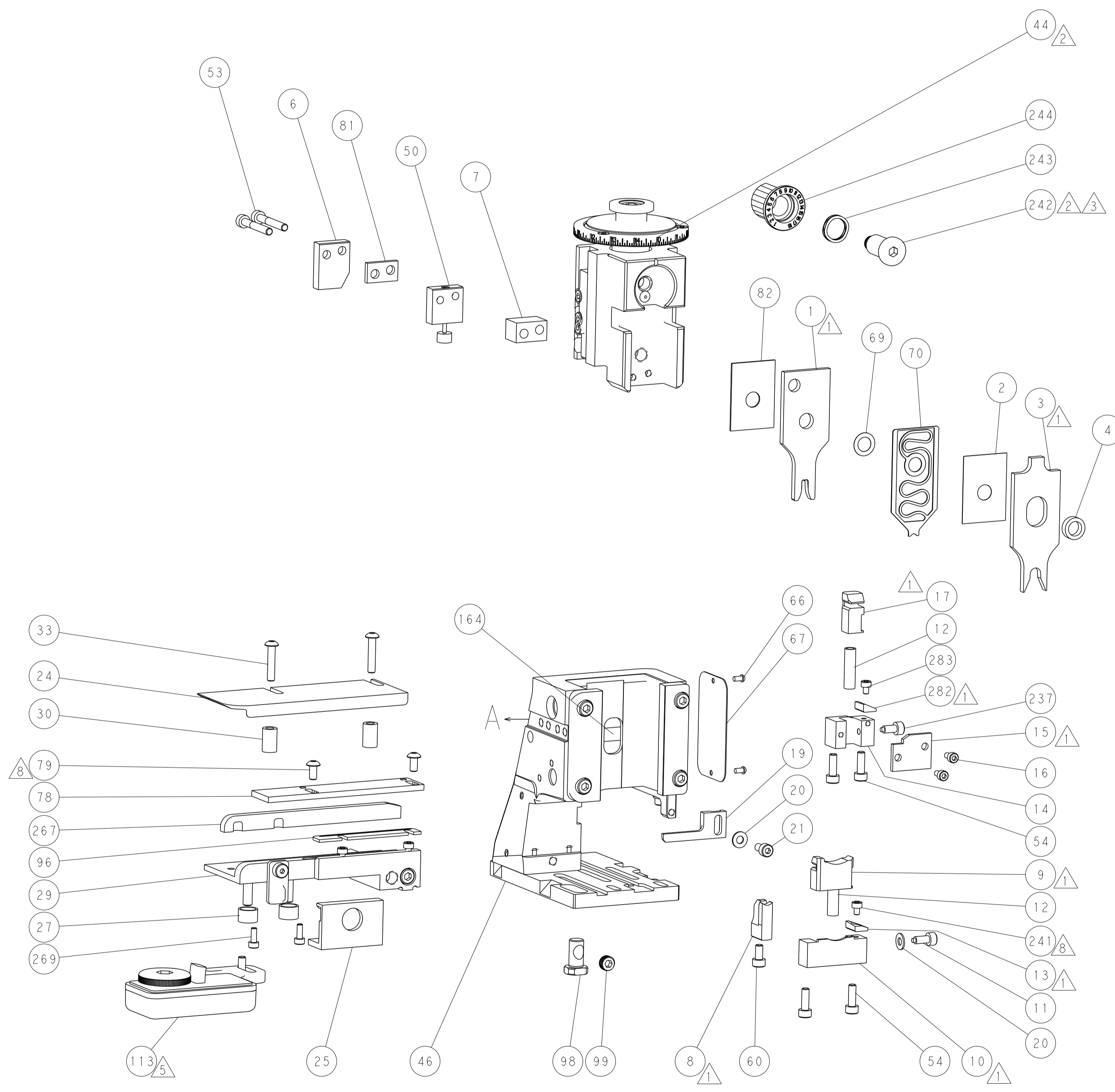
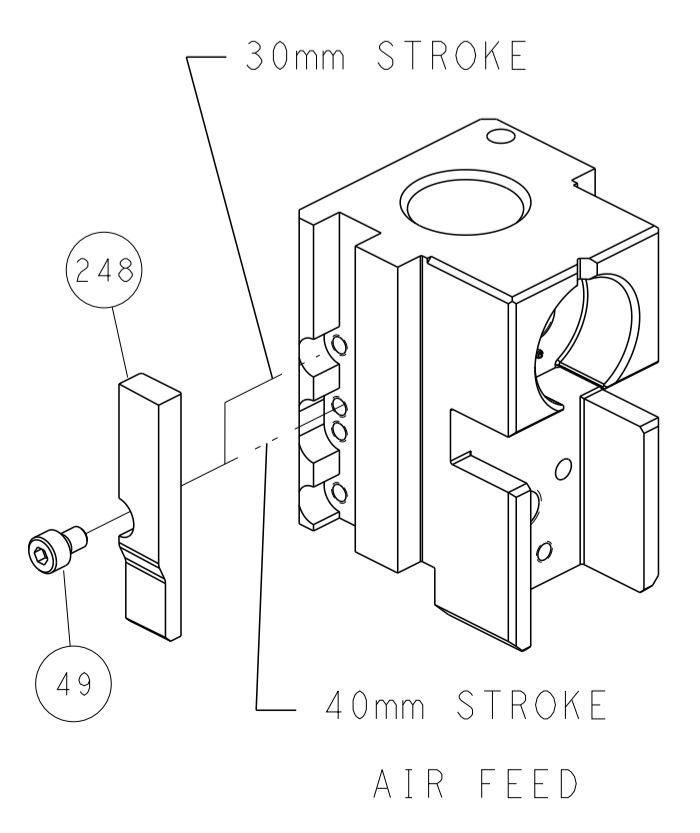


FEED SPRING SETTING POSITION  
(SHOWN FROM REAR SIDE)

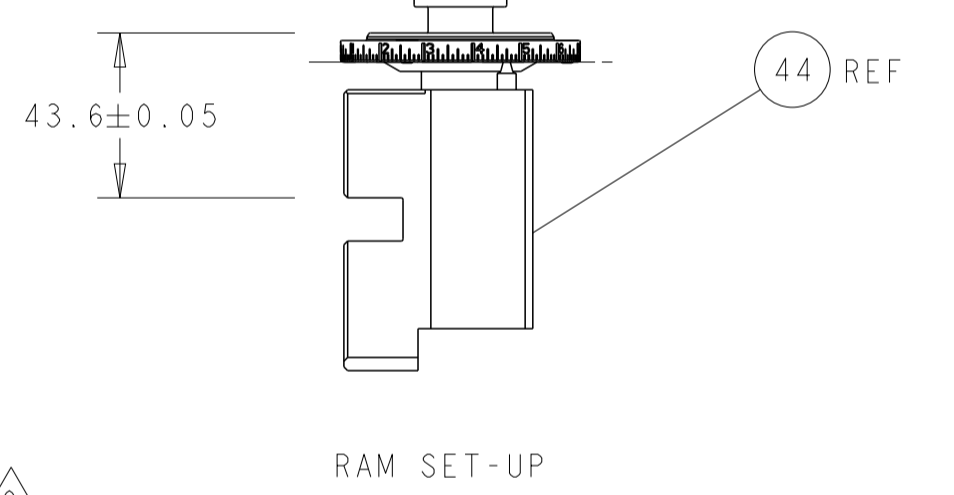
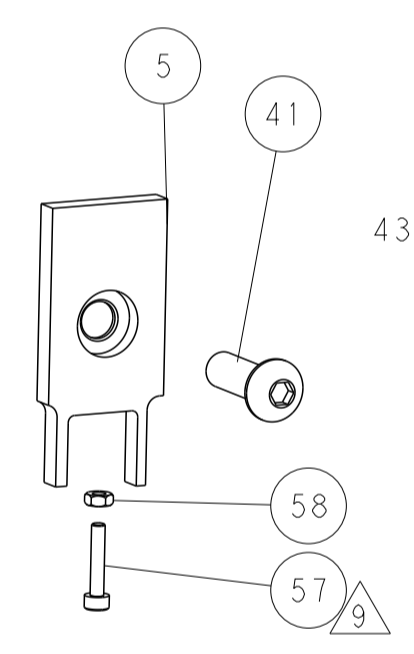


DETAIL A

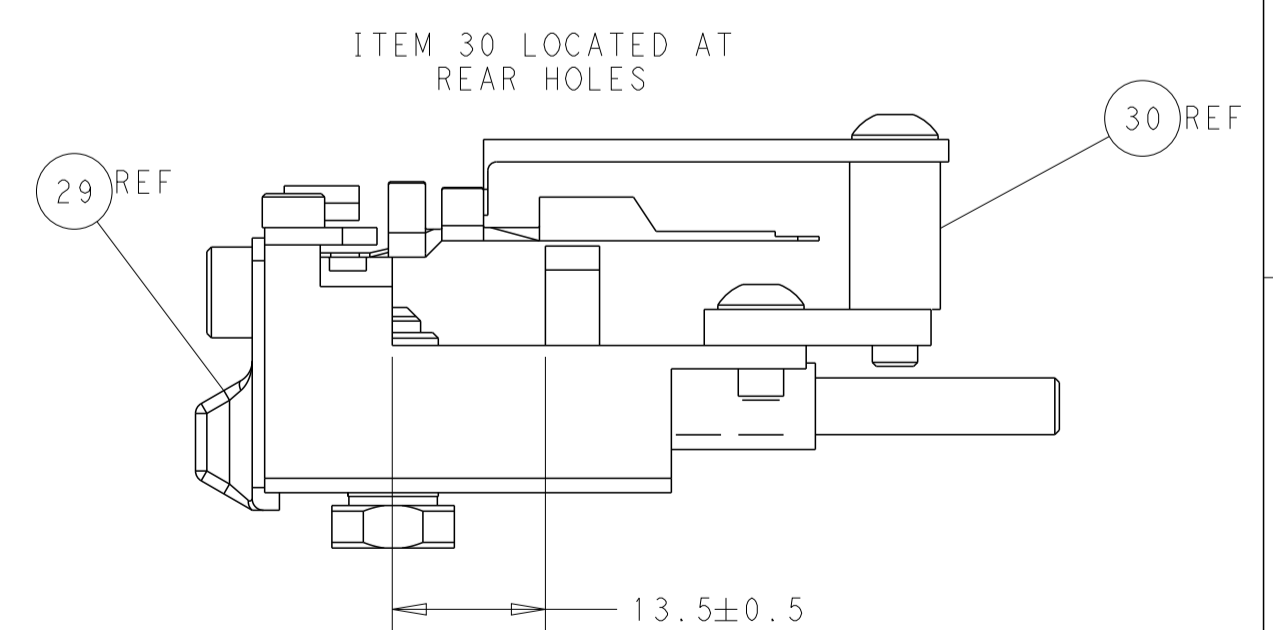
## CAM POSITION



SHEAR DEPRESSOR DETAIL



RAM SET-UP



FEED TRACK POSITION  
GUIDE BY WIRE BARREL

**ATLANTIC VERSION**  
 Shown on sheets 1 of 4 & 2 of 4  
 (Pacific version shown on sheets 3 of 4 & 4 of 4)

<small>THIS DRAWING IS UNPUBLISHED. RELEASED FOR PUBLICATION BY TYCO ELECTRONICS CORPORATION. ALL RIGHTS RESERVED.</small>		DWN T. BROOKENS 08JUN2018 CHK M. HERR 08JUN2018 APVD J. ELBIN 08JUN2018	NAME Ocean Side Feed Applicator
DIMENSIONS: mm 	TOLERANCES UNLESS OTHERWISE SPECIFIED: 0 PLC ± 1 PLC ± 2 PLC ± 3 PLC ± 4 PLC ± ANGLES ± FINISH ±	SIZE CAGE CODE DRAWING NO A1 00779 C-2837303	RESTRICTED TO -
MATERIAL: -		WEIGHT: -	SCALE 1:2 SHEET 2 OF 4 REV B

THIS DRAWING IS UNPUBLISHED.	RELEASED FOR PUBLICATION		
COPYRIGHT 20 BY TYCO ELECTRONICS CORPORATION. ALL RIGHTS RESERVED.			
PART NUMBER	REVISION	DESCRIPTION	FEED TYPE
2-2837303-2	B	FINE CRIMP HEIGHT ADJUST	PNEUMATIC
7-2837303-7	A	CRIMP TOOLING KIT	-

PACIFIC VERSION TERMINATOR  
INTERFACE ADAPTER



APPLICATOR DATA		
CRIMP	SIZE	TYPE
WIRE	3.60 mm [1.42]	F
INSUL	6.50 mm [2.56]	O
APPLICATOR INSTRUCTIONS 408-35042		

TERMINAL DATA: DELPHI TERMINAL DELPHI CRIMP SPECIFICATION	
TERMINAL NAME: TAXI TERMINAL M/P 630	
WIRE STRIP LENGTH 4.40-5.16 mm [1.73-.203 IN]	TERMINAL INSULATION DIAMETER RANGE Ø
TERMINAL APPLICATION SPECIFICATION 12064735 Rev 2014-07-28 PG 3 OF 11	

TERMINALS APPLIED				
TE TERMINAL	DELPHI TERMINAL	TE SEAL	DELPHI SEAL	SEAL INSULATION DIAMETER RANGE
1949323-1	12064737	1949378-2	15324996	3.61-4.50
		1949378-4	15324994	2.81-3.75
		1949378-6	12059258	2.81-3.75

WIRE SIZE	CRIMP HEIGHT mm [INCH]	CRIMP HEIGHT REFERENCE SETTING
3mm <sup>2</sup> OR 12AWG	2.05+/-0.05 [1.081+/-0.02]	9.0



- 1 RECOMMENDED SPARE PARTS
- 2 REFER TO SUPPLIED INSTRUCTION SHEET FOR CLEANING, LUBRICATION AND STORAGE OF APPLICATOR.
- 3 APPLY PART NUMBER 2-23419-6 LOCTITE TO THREADS OF ITEM 242.
- 4 CRIMP HEIGHT REFERENCE SETTING WAS THE SETTING USED WHEN THE APPLICATOR WAS QUALIFIED AT THE FACTORY. ADJUSTMENT MAY BE NECESSARY WHEN RUNNING APPLICATOR IN THE FIELD.
- 5 TERMINAL LUBRICANT IS RECOMMENDED.
- 6 UNLESS SPECIFIED OTHERWISE TORQUE VALUES SHALL BE USED PER DOCUMENT, 101-35000.
- 7 TERMINAL PITCH NOT COMPATIBLE WITH MECHANICAL FEED.
- 8 CUT TO LENGTH AT ASSEMBLY.
- 9 APPLY TORO-SEAL IN ALLEN SOCKET TO FILL HOLE AFTER FLAT HD HAS BEEN ADJUSTED TO CORRECT HEIGHT AT QUALIFICATION.

**\*WARNING**  
ON INSTALLATION, SET WIRE DISC TO CRIMP HEIGHT REFERENCE SETTING FOR LARGEST WIRE SIZE. CRIMP HEIGHT REFERENCE SETTINGS GREATER THAN THE VALUE SHOWN MAY CAUSE DAMAGE TO THE CRIMP TOOLING. REFER TO THE INSTRUCTION SHEET FOR PROPER SETUP AND ADJUSTMENTS.

LOC	DIST	REVISIONS					
A	66	P	LTN	DESCRIPTION	DATE	OWN	APVD
		-		SEE SHEET 1			

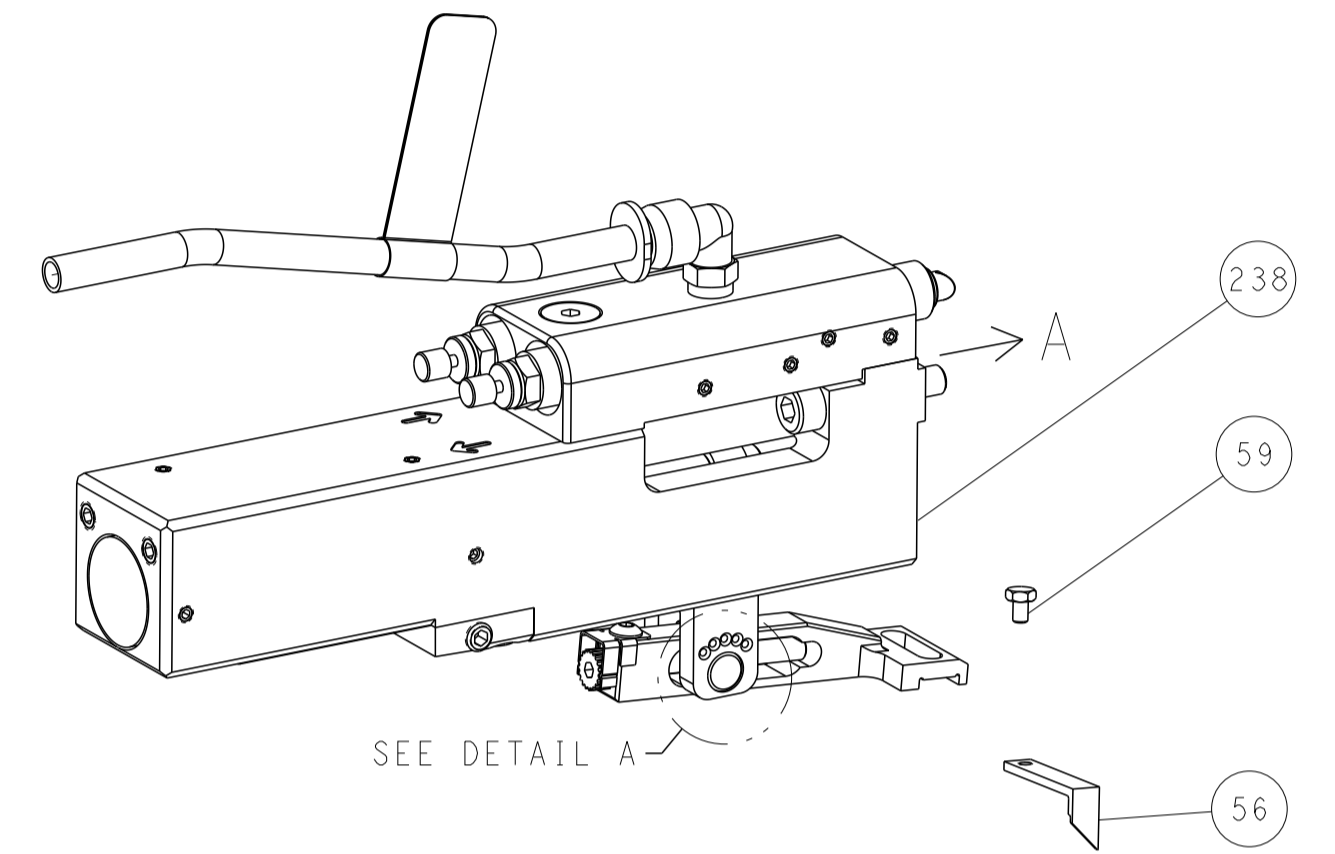
1	-	1	7-18023-7	SCR, SKT HD CAP M3 X 4.0	283
	-	1	2280441-1	INSERT, SHEAR	282
	-	2	2168083-1	SCR, SKT HD CAP, RoHS, M3 X 8.0	269
	-	1	1633782-4	FENCE	267
	-	1	2119082-6	CAM, SNAIL, INSULATION ADJUSTMENT	244
	-	1	2079764-1	WASHER, WAVE SPRING, CREST-TO-CREST	243
3	-	1	2119083-1	RETAINER, INSULATION DIAL	242
8	-	1	7-18023-7	SCR, SKT HD CAP M3 X 4.0	241
	-	1	2844940-1	AIR FEED MODULE	238
	-	1	356885-4	STOP, SHEAR	237
	REF		994970-2	COUNTER, MAGNETIC	164
	-	1	2119641-2	FEED CAM, AIR FEED	151
	-	1	2168083-8	SCR, SKT HD CAP, RoHS, M4 X 16	144
	-	4	2168083-9	SCR, SKT HD CAP, RoHS, M4 X 20	143
	-	1	1-1803583-8	APPLICATOR BASIC ASSEMBLY, SF	141
	-	1	1803516-1	RAM ASSEMBLY, SF PACIFIC	140
5	-	1	2119955-1	ASSY, LUBRICATOR, SIDE FEED	113
	-	1	2844908-1	SCREW, LOCKING	99
	-	1	2844907-1	POST, LOCKING	98
	-	1	1-690438-0	FRONT STRIP GUIDE	96
	-	1	455888-7	SPACER, CRIMPER	82
	-	1	240641-2	SPACER	81
8	-	2	2079383-4	SCR, BHSC, RoHS (M4 X 8)	79
	-	1	1803096-1	EXTENSION PLATE	78
	-	1	1803607-3	DOCUMENTATION PACKAGE	71
	-	1	2119791-7	DEPRESSOR, WIRE	70
	-	1	2119943-1	WASHER, SPACER	69
	-	1	2119740-1	TAG IDENTIFICATION	67
	-	2	2168078-1	SCREW, DRIVE, RH, RoHS, 2 x .188	66
	-	1	5-18022-5	SCR, HEX HD CAP, M4 X 6.0	59
	-	1	5018030-1	NUT, HEX, REG, RoHS, M3	58
9	-	1	1-2168083-3	SCR, SKT HD CAP, RoHS, M3 X 16	57
	-	1	1338683-8	FEED PAWL	56
	-	2	1-2168083-5	SCR, SKT HD CAP, RoHS, M4 X 30	53
	-	1	1803382-6	HOLD DOWN, SPRING LOADED	50
	-	1	18023-9	SCR, SKT HD CAP M4 X 6.0	49
	-	1	1803602-1	SCR, BHSC, RoHS (M8 X 25)	41
	-	2	2079383-5	SCR, BHSC, RoHS (M4 X 20)	33
	-	2	2-2844962-1	SPACER, CYLINDRICAL, STRIP GUIDE	30
	-	1	2844992-5	ASSEMBLY, STRIP GUIDE	29
	-	2	22283-1	SPRING, COMPRESSION	27
	-	1	240792-1	DRAG, TERMINAL	25
	-	1	1320928-4	STRIP GUIDE	24
	-	1	2168083-2	SCR, SKT HD CAP, RoHS, M4 X 8.0	21
	-	2	1-18028-2	WASHER, FLAT, REG M4	20
	-	1	2119533-1	STRIPPER, SIDE FEED	19
	-	1	1-690463-4	FLOATING SHEAR, REAR	17
	-	2	1-2168083-1	SCR, SKT HD CAP, RoHS, M3 X 6	16
	-	1	1-690464-6	SHEAR PLATE, REAR	15
	-	1	2119862-1	SHEAR HOLDER, REAR	14
1	-	1	2119806-1	INSERT, SHEAR	13
	-	2	3-22280-3	SPRING, COMPRESSION	12
	-	1	1-356885-4	STOP, SHEAR	11
1	-	1	2119805-7	SHEAR HOLDER, FRONT	10
1	-	1	318059-9	FLOATING SHEAR, FRONT	9
1	1	1	2-1803320-6	ANVIL, COMBINATION	8
	-	1	2-240641-6	SPACER	7
	-	1	2-690468-8	DEPRESSOR SHEAR, REAR	6
	-	1	1803080-1	DEPRESSOR, SHEAR	5
	-	1	4-238011-5	BLOCK, CRIMPER SPACER	4
1	1	1	7-1633966-1	CRIMPER, INSULATION O	3
	-	1	455888-1	SPACER, CRIMPER	2
1	1	1	1633664-3	CRIMPER, WIRE	1

DIMENSIONS:		TOLERANCES UNLESS OTHERWISE SPECIFIED:		DRAWN: T. BROOKENS 08JUN2018		TE Connectivity Harrisburg, PA 17105-3608	
mm	0 PLC ±	1 PLC ±	2 PLC ±	3 PLC ±	4 PLC ±	APVD: T. ELBIN 08JUN2018	NAME: Ocean Side Feed Applicator
MATERIAL:		FINISH:		WEIGHT:		SIZE: A1 00779 C=2837303	
Customer Accessible Production Drawing				SCALE: 1:2		SHEET 3 OF 4 REV B	

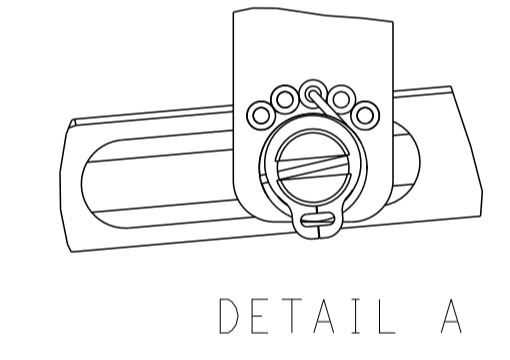
PACIFIC VERSION  
Shown on sheets 3 of 4 & 4 of 4  
(Atlantic version shown on sheets 1 of 4 & 2 of 4)

LOC	DIST	REVISIONS					
A	66	P	LTN	DESCRIPTION	DATE	DMN	APVD
		-		SEE SHEET 1	-	-	-

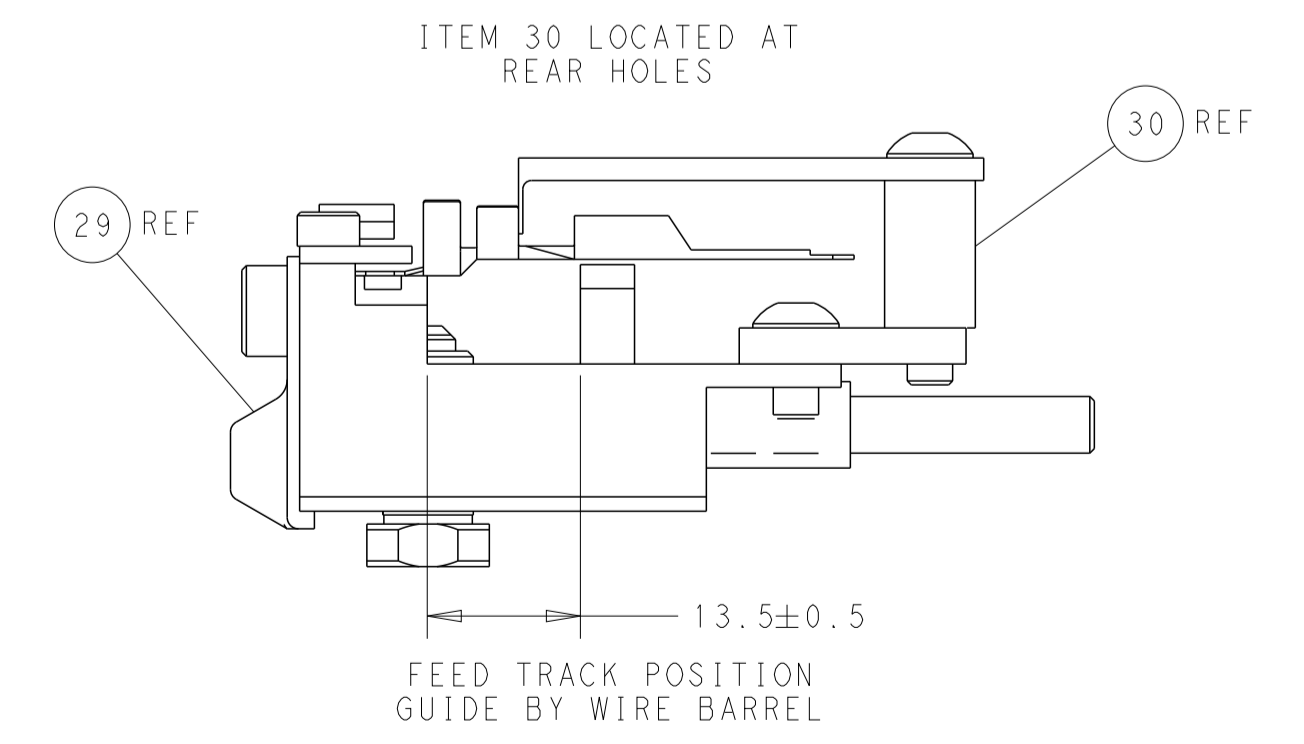
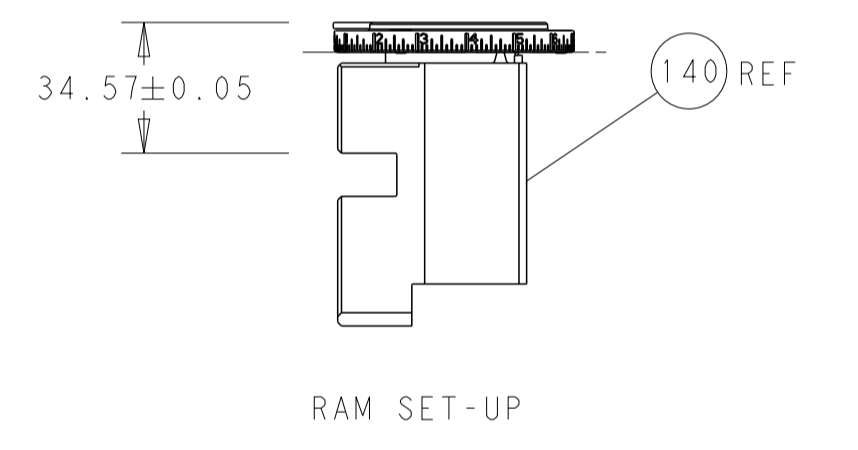
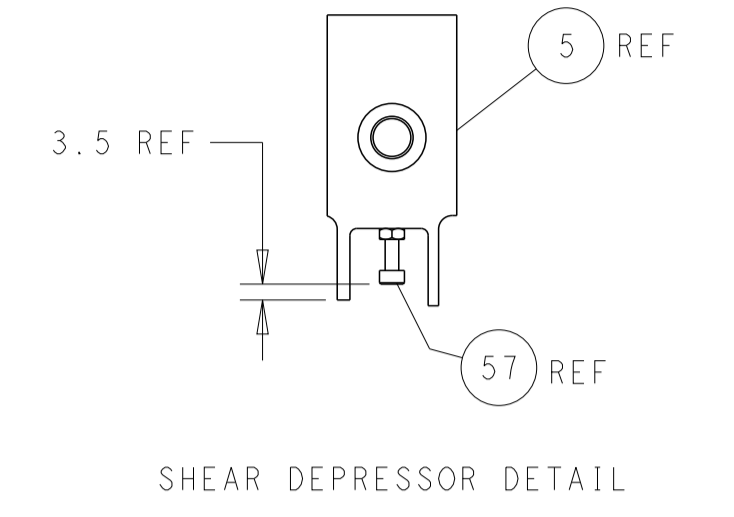
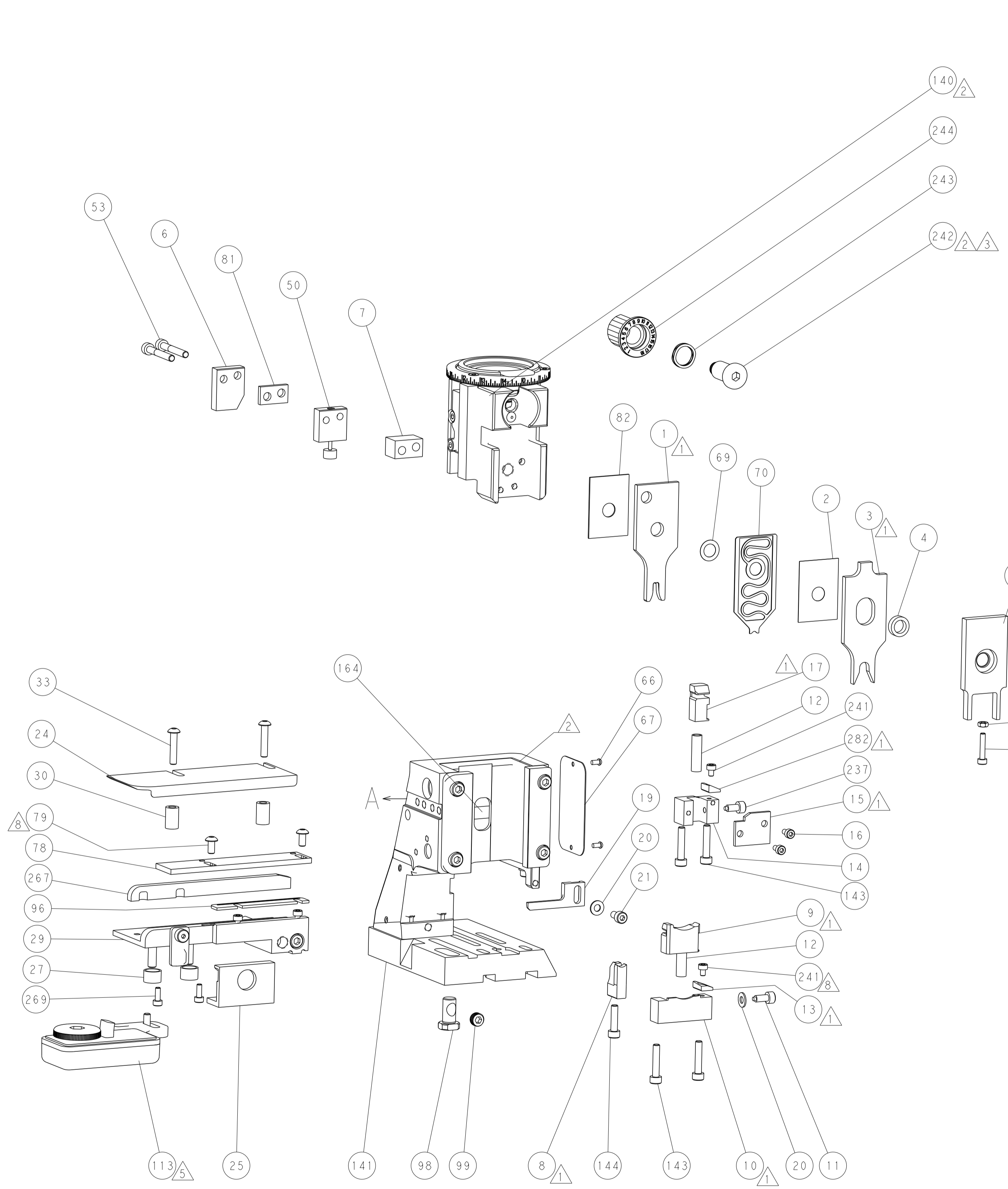
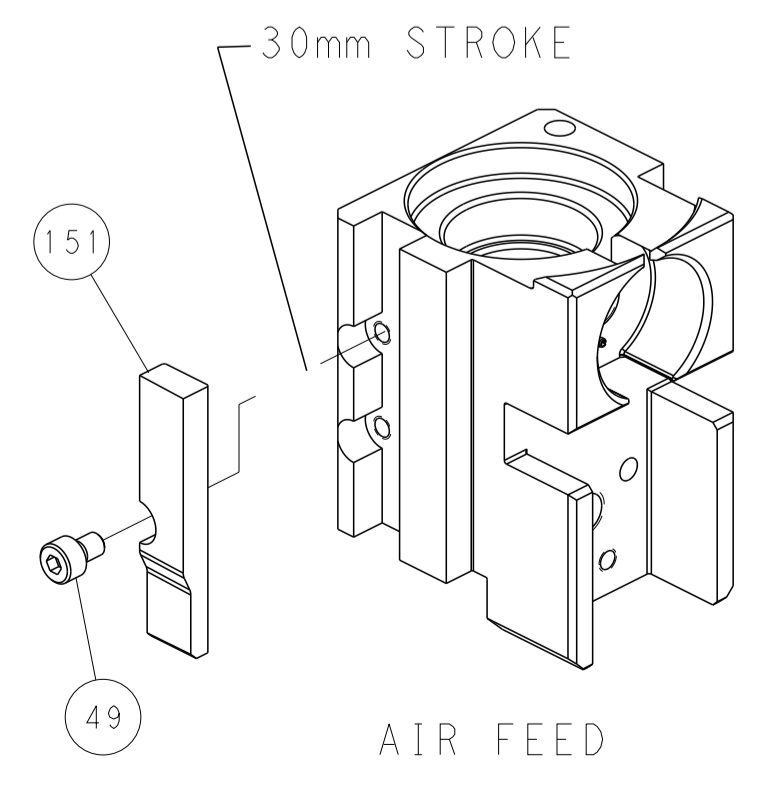
### FEED TYPE PNEUMATIC



### FEED SPRING SETTING POSITION (SHOWN FROM REAR SIDE)



### CAM POSITION



**PACIFIC VERSION**  
 Shown on sheets 3 of 4 & 4 of 4  
 (Atlantic version shown on sheets 1 of 4 & 2 of 4)

<small>THIS DRAWING IS UNPUBLISHED. RELEASED FOR PUBLICATION 20. COPYRIGHT 20 BY TYCO ELECTRONICS CORPORATION. ALL RIGHTS RESERVED.</small>		DMN T. BROOKENS 08JUN2018 CHK M. HERR 08JUN2018 APVD T. ELBIN 08JUN2018	TE Connectivity Harrisburg, PA 17105-3608
DIMENSIONS: mm TOLERANCES UNLESS OTHERWISE SPECIFIED: 0 PLC ± 1 PLC ± 2 PLC ± 3 PLC ± 4 PLC ± ANGLES ± MATERIAL: - FINISH: -		NAME: Ocean Side Feed Applicator APPLICATION SPEC: - PRODUCT SPEC: - SIZE: A1 CAGE CODE: 00779 DRAWING NO: C=2837303 WEIGHT: - SCALE: 1:2	RESTRICTED TO: - SHEET 4 OF 4 REV B