

4

3

2

1

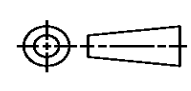
THIS DRAWING IS UNPUBLISHED. RELEASED FOR PUBLICATION
© COPYRIGHT ALL RIGHTS RESERVED.

LOC	DIST	REVISIONS			
P	LTR	DESCRIPTION	DATE	DWN	APVD
	L2	ECR-14-002922	28FEB2014	GK	HMR

REPLACED BY OCEAN STYLE APPLICATOR PART NUMBER 2151112-1

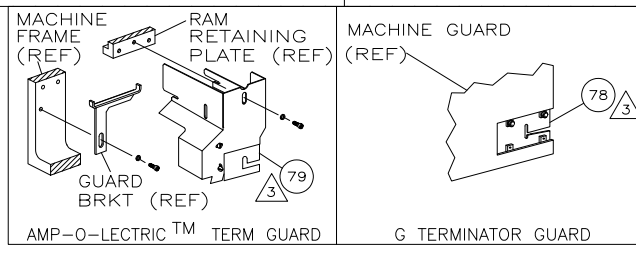
FOR REPLACEMENT PARTS FOR APPLICATOR 567251 REFER TO ADDITIONAL PAGE(S). SPARE PARTS KIT (IF LISTED) WILL REMAIN AVAILABLE.

THE REPLACEMENT OCEAN STYLE APPLICATOR HAS THE SAME TERMINATOR/PRESS INTERFACE AS APPLICATOR 567251

THIS DRAWING IS A CONTROLLED DOCUMENT.		DWN	GOPALAKRISHNA HV		
DIMENSIONS:		CHK	RAGHAVENDRA		
		APVD	RAGHAVENDRA		
TOLERANCES UNLESS OTHERWISE SPECIFIED:		PRODUCT SPEC	NAME		
0 PLC	±	APPLICATION SPEC	SIDE FEED HDM APPLICATOR		
1 PLC	±		SIZE	CAGE CODE	DRAWING NO
2 PLC	±		A3		©- 567251
3 PLC	±				RESTRICTED TO
4 PLC	±				
ANGLES	±	WEIGHT			
MATERIAL	FINISH	CUSTOMER ACCESSIBLE PRODUCTION DRAWING		SCALE	SHEET 1 OF 2 REV L2

THIS DRAWING IS UNPUBLISHED.
 RELEASED FOR PUBLICATION
 © COPYRIGHT BY TYCO ELECTRONICS CORPORATION. ALL RIGHTS RESERVED.

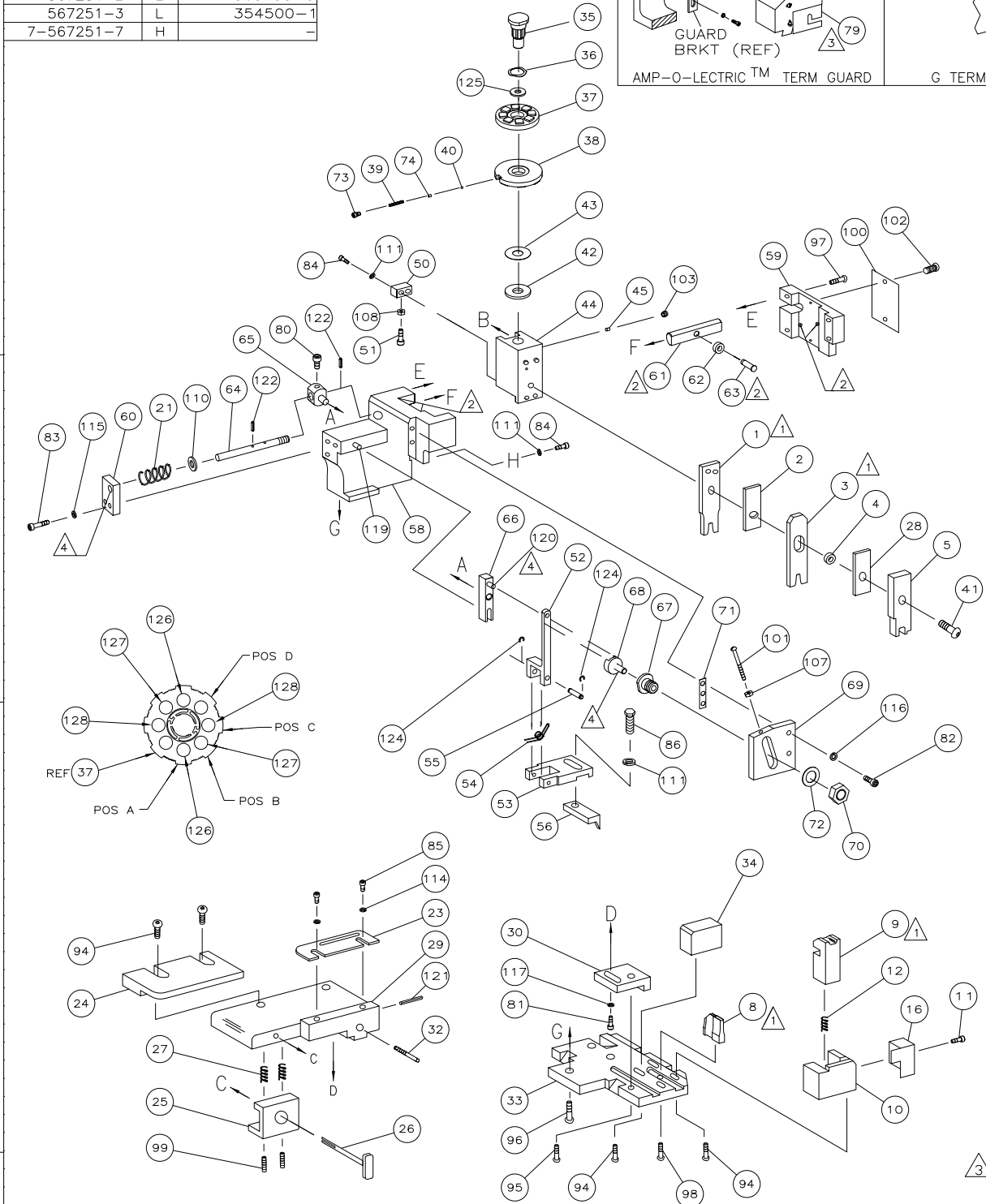
PART NUMBER	REV	FIRST USED
567251-1	L	854400-1
567251-2	L	565435-5
567251-3	L	354500-1
7-567251-7	H	



TERMINAL NAME: MINI-UNIVERSAL MATE-N-LOK™ PIN & SOCKET	
PIN	SOCKET
171636	171637

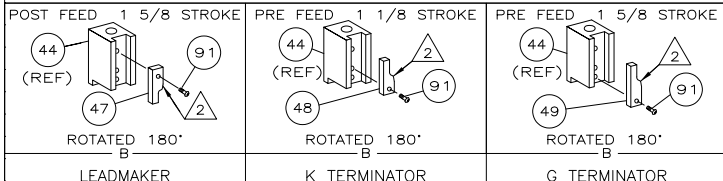
CRIMPING DATA			
PAD LTR	CRIMP HEIGHT	WIRE SIZE	
A	.051 ±.002	(1)16 OR (2)20	
B	.048 ±.002	18 or 1mm ²	
C	.042 ±.002	20 or 0.5mm ²	
D	NOT USED		
CRIMP	SIZE	TYPE	RANGE
WIRE	.070	F	20-16
INSUL	.140	F	.079-.126 OR (2).094
FEEED	APPL INST	SET UP GAGE	LAYOUT
.472	408-8040	458637-1	L-1284
WIRE STRIP LENGTH			

LOC		DIST		REVISIONS			
A	66	REV	DATE	BY	APPD	DATE	BY
		L1	20JAN2010	YY	TE		



QTY	REQD	PER	ASSY	PART NO	DESCRIPTION	ITEM NO
-	2	2	2	3-354779-8	PIN, WIRE DISC (.3180)C	129
-	2	2	2	2-354779-6	PIN, WIRE DISC (.3120)B	127
-	2	2	2	2-354779-0	PIN, WIRE DISC (.3090)A	126
-	1	1	1	986950-1	WASHER, FLAT PRECISION	125
-	REF	REF	REF	21045-3	RING, RET "C"(Ø.187)FD FING PIN	124
-	REF	REF	REF	5-21028-1	PIN,SLT SPR(Ø.125x.50)ADJ ROD	122
-	1	1	1	4-21028-0	PIN,SLT SPR(Ø.093x.75)ST GDE PL	121
-	REF	REF	REF	1-21030-1	PIN,DOWEL(Ø.187x.50)LEVER	120
-	REF	REF	REF	1-21030-6	PIN,DOWEL(Ø.187x1.25)HOUSING	119
-	1	1	1	21024-5	WASHER, LOCK(#10)ADJ BLOCK	118
-	REF	REF	REF	21024-5	WASHER,LOCK(#10)ADJ PLATE	117
-	REF	REF	REF	21024-5	WASHER,LOCK(#10)FEED GDE ROD	115
-	2	2	2	21024-2	WASHER,LOCK(#4)FRONT STP GUIDE	114
-	4	4	4	21024-4	WASHER,LOCK(#8)STRIPPER	111
-	REF	REF	REF	21899-4	WASHER,FLAT(Ø5/16)SCREW ADJ	110
-	1	1	1	21018-5	NUT,HEX(NO.6)HOLDDOWN	108
-	REF	REF	REF	21018-5	NUT,HEX(6-32)FEED ADJ	107
-	1	1	1	21009-2	SCR,SKT SET(1/4-20x.25 LW)RAM	103
-	2	2	2	21017-2	SCR,DRIVE(#2x.19)ID PLATE	102
-	REF	REF	REF	6-23715-5	SCR,PAN HD(6-32x1.50)FEED ADJ	101
-	1	1	1	461264-1	PLATE, IDENTIFICATION	100
-	2	2	2	5-21006-6	SCR,SET(10-32x.75)DRAG	99
-	1	1	1	22733-8	SCR,BHC(8-32x.38 LW)ANVIL	98
-	REF	REF	REF	2-21002-9	SCR,BHC(10-32x.75)CAP	97
-	REF	REF	REF	2-22733-8	SCR,BHC(1/4-20x.62)HOUSING	96
-	REF	REF	REF	2-21002-7	SCR,BHC(10-32x.50)SG ADJ BLOCK	95
-	6	6	6	2-21002-2	SCR,BHC(8-32x.50)SHEAR	94
-	1	1	1	1-21002-7	SCR,BHC(6-32x.38)CAM	91
-	1	1	1	2-22603-0	SCR,HEX HD(8-32x.31)FEED FINGER	86
-	2	2	2	1-21000-3	SCR,SHC(4-40x.25)F ST GUIDE	85
-	3	3	3	2-21000-7	SCR,SHC(8-32x.50)STRIPPER	84
-	REF	REF	REF	3-21000-7	SCR,SHC(10-32x.75)FEED ROD GD	83
-	REF	REF	REF	3-21000-6	SCR,SHC(10-32x.62)FD ADJ BLK	82
-	1	1	1	3-21000-4	SCR,SHC(10-32x.38)SG ADJ BL	81
-	REF	REF	REF	3-21000-4	SCR,SHC(10-32x.38)PIVOT BLK	80
-	REF	REF	REF	455749-1	GUARD, WINDOW	79
-	REF	REF	REF	679532-1	INSERT, GUARD	78
-	1	1	1	690603-1	SPRING, ASSIST	74
-	1	1	1	23030-1	SCR,SHC(6-32x.25 SL)INS DISC	73
-	REF	REF	REF	458109-1	WASHER, SPECIAL	72
-	REF	REF	REF	690517-1	SPACER	71

QTY	REQD	PER	ASSY	PART NO	DESCRIPTION	ITEM NO
-	REF	REF	REF	22594-8	NUT,HEX(1/2-20)	70
-	REF	REF	REF	240628-1	PLATE, ADJUSTMENT	69
-	REF	REF	REF	240626-1	SHAFT, PIVOT	68
-	REF	REF	REF	240633-1	BUSHING	67
-	REF	REF	REF	455680-1	LEVER, INTERMEDIATE	66
-	REF	REF	REF	240629-1	BLOCK, PIVOT	65
-	REF	REF	REF	240632-2	SCREW, ADJ FEED ROD	64
-	REF	REF	REF	240659-3	PIN, CAM ROLLER	63
-	REF	REF	REF	240658-1	ROLLER, CAM	62
-	REF	REF	REF	454398-2	ROD, FEED	61
-	REF	REF	REF	454178-1	GUIDE, FEED ROD	60
-	REF	REF	REF	454220-1	CAP, RAM	59
-	REF	REF	REF	454485-1	HOUSING	58
-	1	1	1	458537-2	PAWL, FEED	56
-	REF	REF	REF	240624-1	PIN, FEED FINGER	55
-	REF	REF	REF	691499-1	SPRING, FEED FINGER	54
-	REF	REF	REF	690541-1	HOLDER, FEED FINGER	53
-	REF	REF	REF	455679-1	LEVER, TERMINAL FEED ARM	52
-	1	1	1	811242-2	BUMPER, HOLDDOWN	51
-	1	1	1	690753-1	SPACER, TONKER	50
-	1	1	1	690602-6	CAM, PRE-FEED 1 5/8 ST	49
-	1	1	1	690602-5	CAM, PRE-FEED 1 1/8 ST	48
-	1	1	1	690501-4	CAM, POST-FEED 1 5/8 ST	47
-	1	1	1	459456-1	APPLICATOR, BASIC (SUBASSY)	46
-	1	1	1	690191-1	PLUG, NYLON	45
-	1	1	1	455673-1	RAM	44
-	1	1	1	690125-1	WASHER, LAMINATED	43
-	1	1	1	690124-3	WASHER, RAM	42
-	1	1	1	7-21002-9	BOLT, CRIMPER(5/16x1.00)	41
-	1	1	1	23241-6	BALL, STEEL	40
-	1	1	1	690170-1	SPRING, COMPRESSION	39
-	1	1	1	690142-3	DISC, INSULATION	38
-	1	1	1	354777-1	WIRE DISC, PLASTIC	37
-	1	1	1	22480-5	WASHER, SPRING	36
-	1	1	1	690212-1	POST, RAM	35
-	1	1	1	692776-2	SUPPORT, TERMINAL	34
-	REF	REF	REF	455675-1	PLATE, BASE	33
-	1	1	1	690432-3	SCREW, ADJUSTMENT	32
-	REF	REF	REF	455689-1	BLOCK, STRIP GUIDE ADJ	30
-	1	1	1	455671-1	PLATE, STRIP GUIDE	29
-	1	1	1	1-455888-5	SPACER, FRONT SHEAR DEP	28
-	2	2	2	1-22284-0	SPRING, DRAG	27
-	1	1	1	690546-1	LEVER, DRAG RELEASE	26
-	1	1	1	240792-1	DRAG, TERMINAL	25
-	1	1	1	6-690504-8	GUIDE, STRIP (REAR)	24
-	1	1	1	690438-1	GUIDE, STRIP (FRONT)	23
-	1	1	1	690472-2	STRIPPER	22
-	REF	REF	REF	4-22284-9	SPRING, FEED RETURN	21
-	1	1	1	691353-1	STRIPPER	19
-	1	1	1	691667-1	GUARD, CHIP (FRONT)	16
-	1	1	1	3-22280-3	SPRING, SHEAR	12
-	1	1	1	690461-1	STOP, SHEAR	11
-	1	1	1	690459-1	HOLDER, SHEAR (FRONT)	10
-	1	1	1	462006-1	SHEAR, FLOAT (FRONT)	9
-	1	1	1	5-803653-7	ANVIL	8
-	1	1	1	2-455889-0	DEPRESSOR, SHEAR (FRONT)	5
-	1	1	1	2-238011-2	SPACER, BLOCK CRIMPER	4
-	1	1	1	8-456134-2	CRIMPER, INSULATION	3
-	1	1	1	455888-5	SPACER, CRIMPER	2
-	1	1	1	2-456404-5	CRIMPER, WIRE	1



- 1 RECOMMENDED SPARE PARTS.
- 2 GREASE LIGHTLY.
- 3 GUARD MUST BE IN PLACE WHEN OPERATING APPLICATOR IN A BENCH MACHINE.
- 4 LUBRICATE DAILY USING NO. 20 MACHINE OIL.
- 5. ITEMS WITH QTY OF REF SPECIFIED (EXCEPT ITEMS 78 AND 79) ARE USED ON ITEM 46.

ONE WIRE CRIMP STRIP LENGTH .125-.146 IN (3.2-3.7mm).
 TWO WIRE CRIMP STRIP LENGTH .137-.157 IN (3.5-4.0mm).

THIS DRAWING IS A CONTROLLED DOCUMENT.

DIMENSIONS: INCHES

TOLERANCES UNLESS OTHERWISE SPECIFIED:

0 PLC	± .005
1 PLC	± .002
2 PLC	± .001
3 PLC	± .0005
4 PLC	± .0002
ANGLES	± .001
FINISH	

MATERIAL: -

APPROVED: T. BEDDICK

DATE: 7-20-94

NAME: T. BEDDICK

PRODUCT SPEC: -

APPLICATION SPEC: -

WEIGHT: -

CUSTOMER DRAWING: A1

SCALE: -

SHEET: 1 OF 1

REV: L1

TYCO ELECTRONICS CORPORATION
 HARRISBURG, PA 17105-3608

SIDE FEED HDM APPLICATOR

SIZE: A1

CAGE CODE: 00779

DRAWING NO: 567251

RESTRICTED TO: -