

ZIF PGA Sockets

1. SCOPE

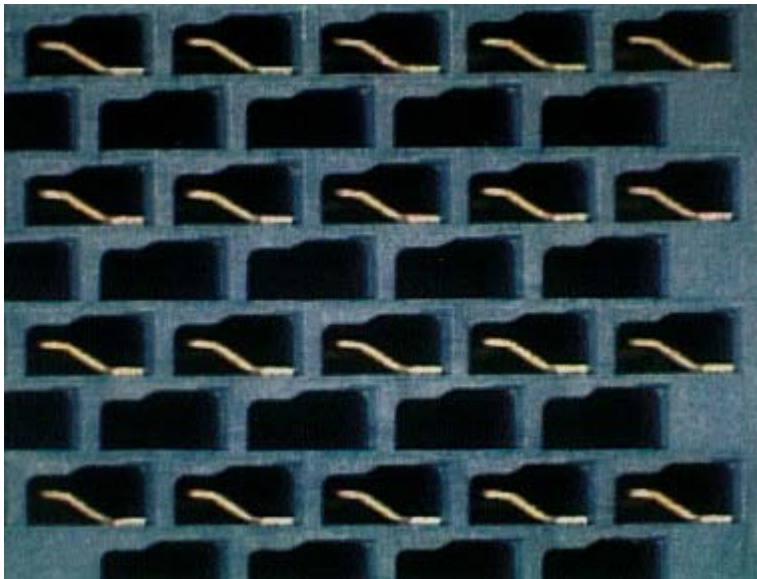
This specification covers the acceptable requirements and the not acceptable conditions for the ZIF PGA Sockets

2. INSPECTION CRITERIA

Unless otherwise specified, the figures in this specification are shown at approximately 10X magnification. Parts shall be viewed at the suggested 7X magnification. Workmanship criteria may be used for all sockets.

3. DEFINITION

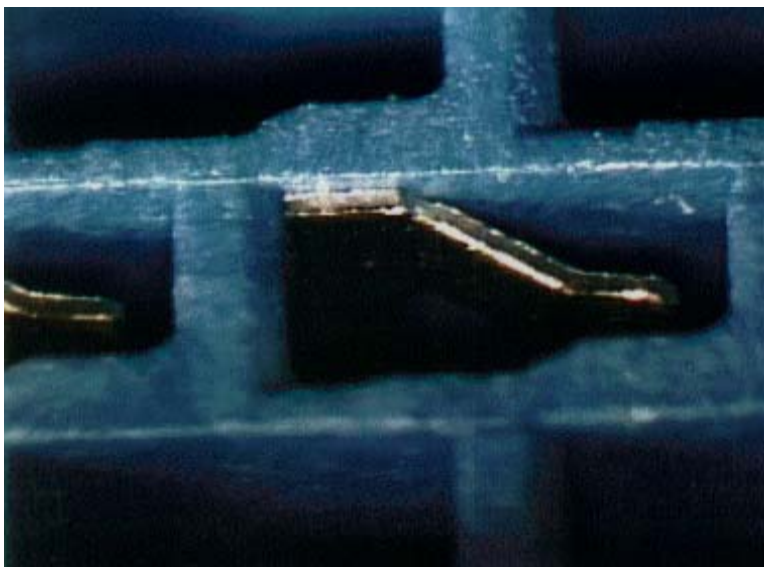
Contact Flag: The .002" X .025" area immediately following the bend on the free end of the contact.



ACCEPTABLE

1. Contacts Properly Oriented and Seated Against Side and End Wall
2. No Missing or Mis-Inserted Contacts
3. Contacts Not Standing Above Top Surface of Housing
4. Contact Flags Formed Properly

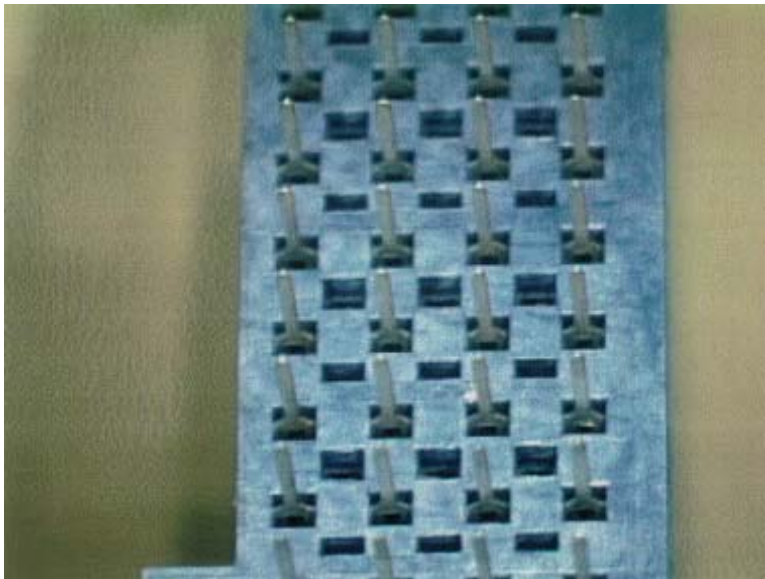
Figure 1



ACCEPTABLE

Gold Completely Covering the Contact Flag Area

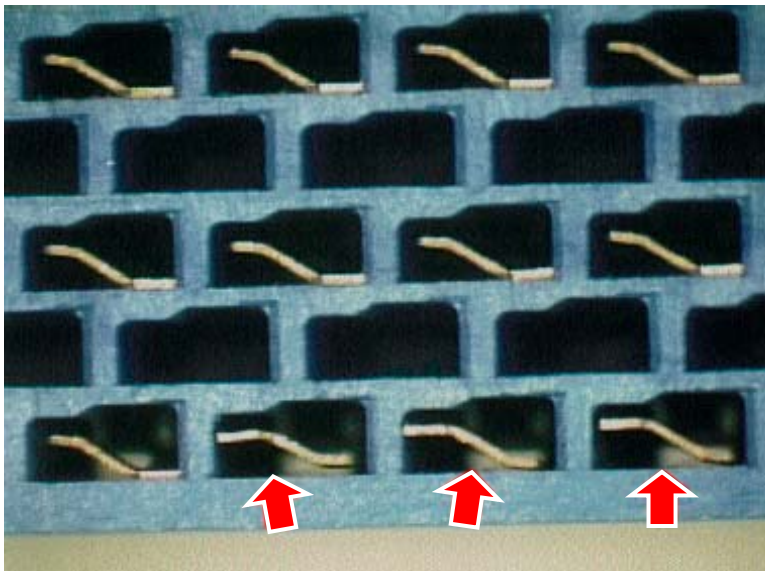
Figure 2
(30X)



ACCEPTABLE

1. No Bent or Broken Solder Tails
2. No Discolored Plating
3. No Burrs or Flaking Plating

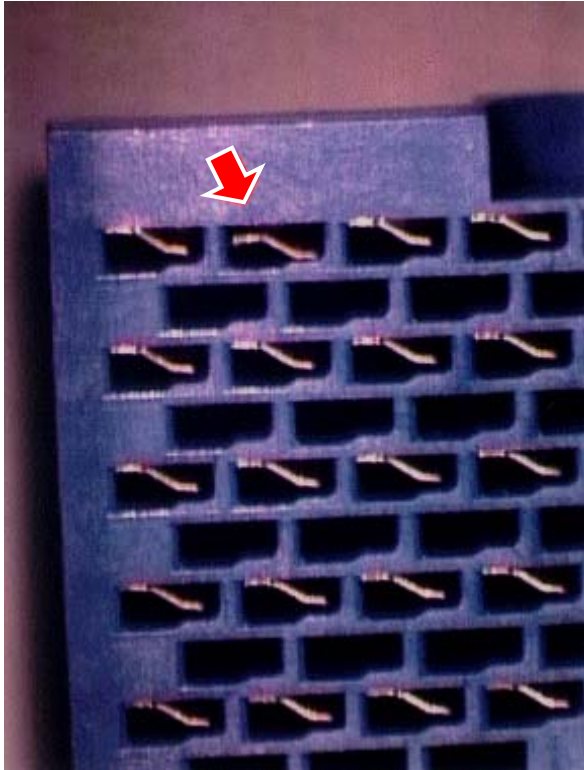
Figure 3



NOT ACCEPTABLE

Contacts Inserted Backwards
in Housing

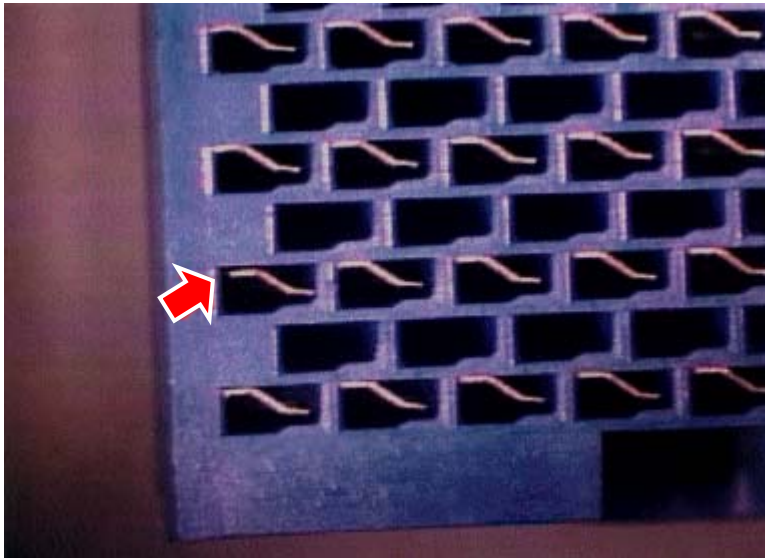
Figure 4



NOT ACCEPTABLE

Contact Away from the Side Wall, Greater Than .05 mm [.002 In.]

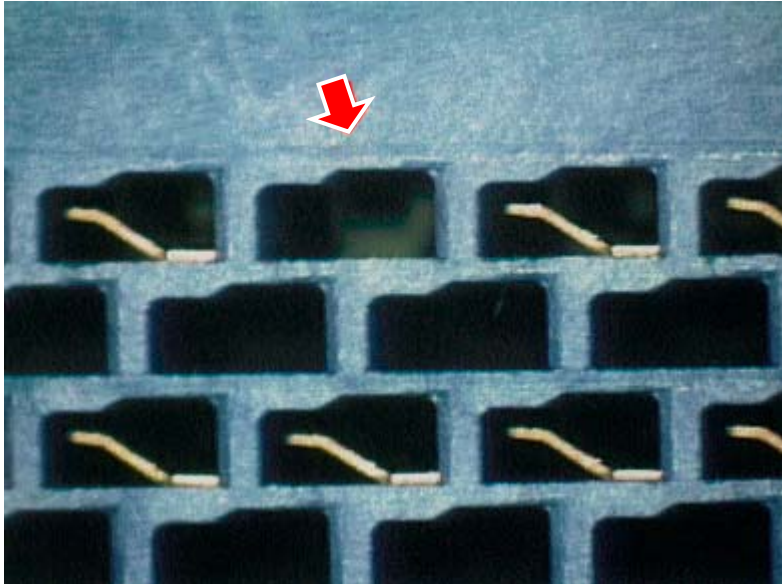
Figure 5



NOT ACCEPTABLE

Contact Away from the End Wall, Greater Than .10 mm [.004 In.]

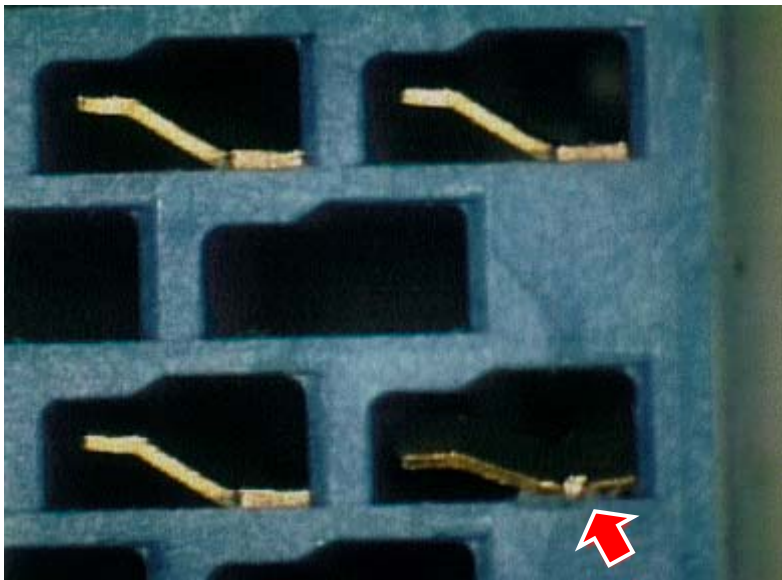
Figure 6



NOT ACCEPTABLE

Missing Contact

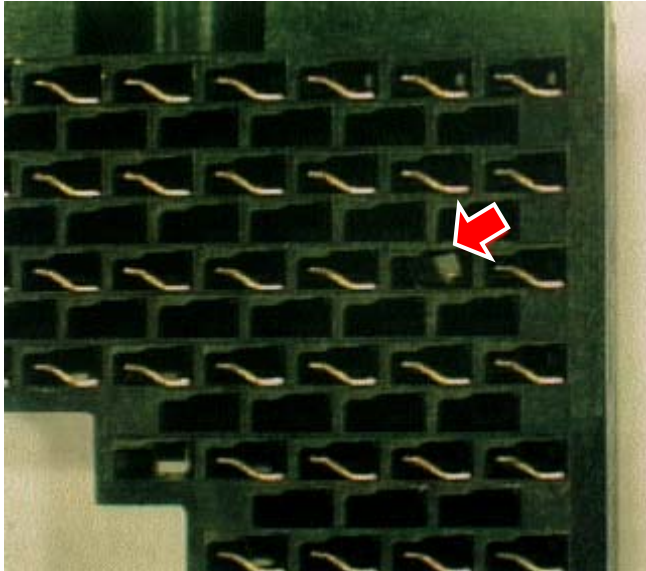
Figure 7



NOT ACCEPTABLE

Mis-Inserted Contact
(Deformed)

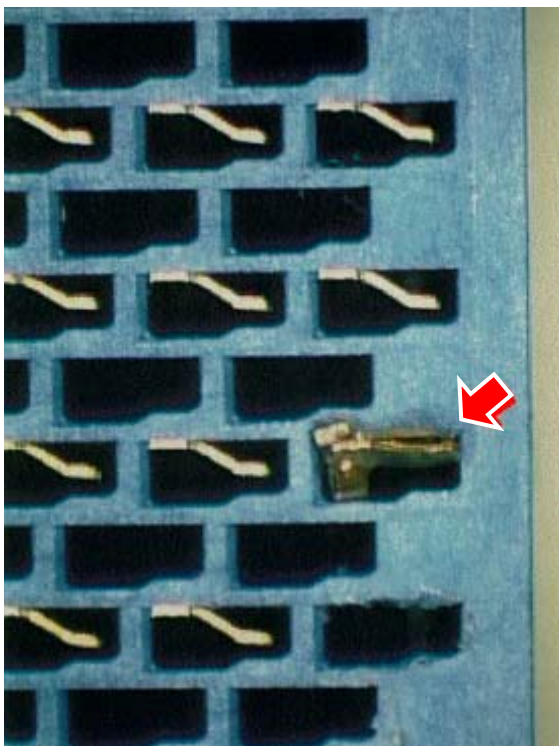
Figure 8
(20 X)



NOT ACCEPTABLE

Mis-Inserted Contact
(Deformed)

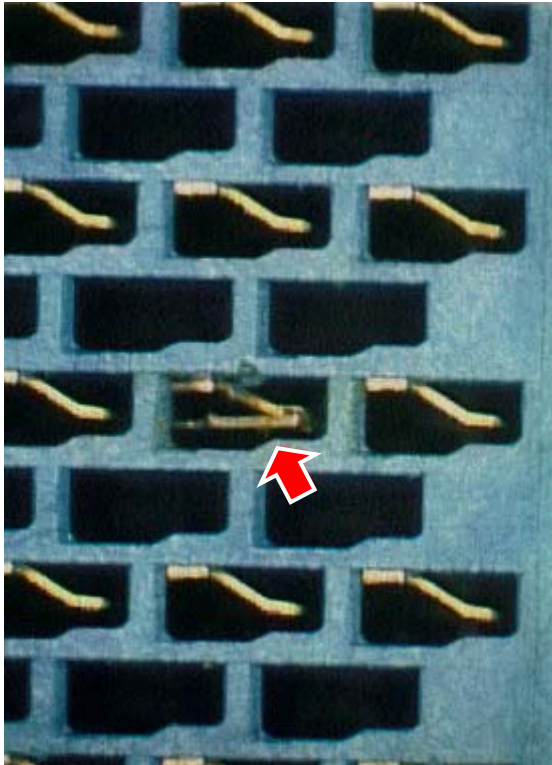
Figure 9



NOT ACCEPTABLE

Mis-Inserted Contact
(Two Contacts in One Cavity)

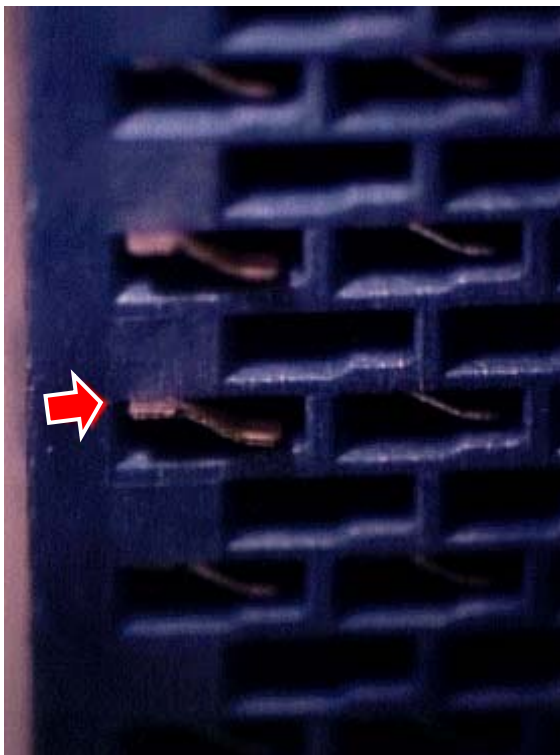
Figure 10



NOT ACCEPTABLE

Mis-Inserted Contact
(Contact Torn in Half
During Insertion)

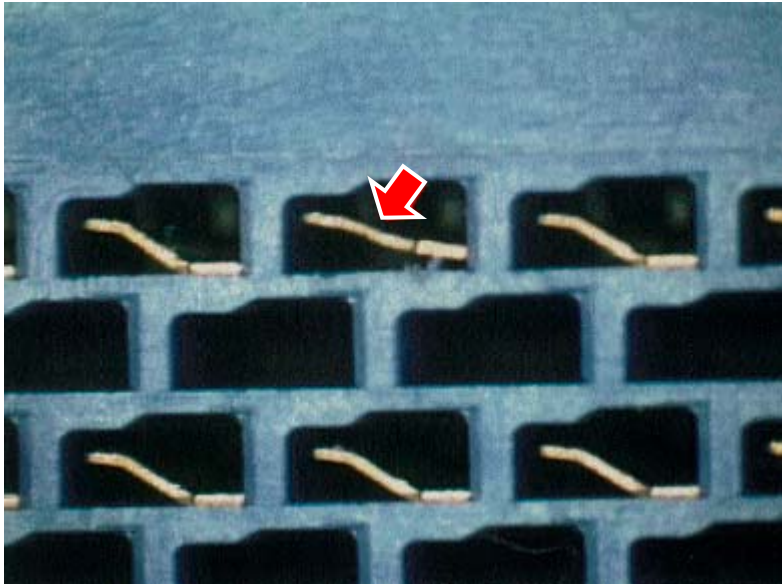
Figure 11



NOT ACCEPTABLE

Contact Standing Above Top
Surface of the Housing

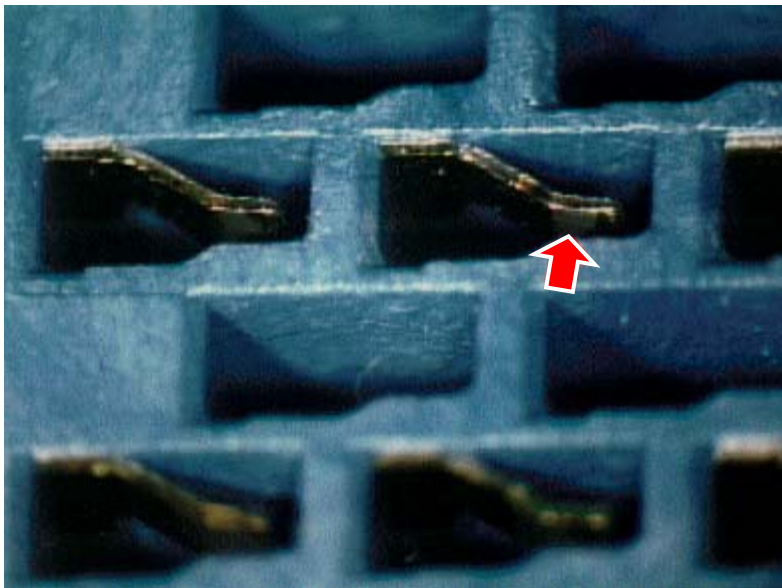
Figure 12



NOT ACCEPTABLE

Contact Flag Formed
Incorrectly

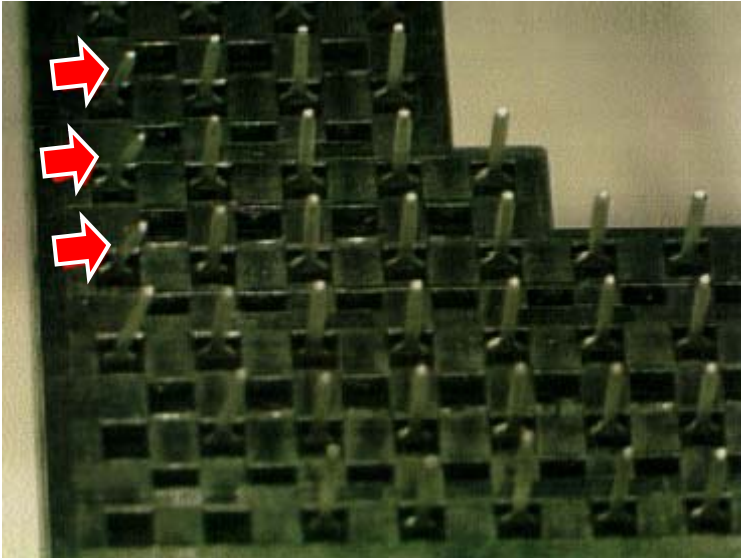
Figure 13



NOT ACCEPTABLE

Missing Gold on Contact
Flag Area

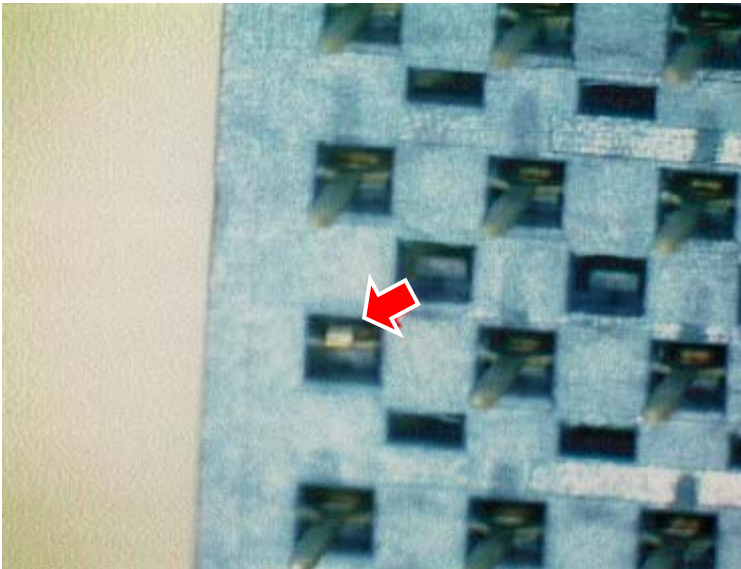
Figure 14



NOT ACCEPTABLE

Bent Solder Tails

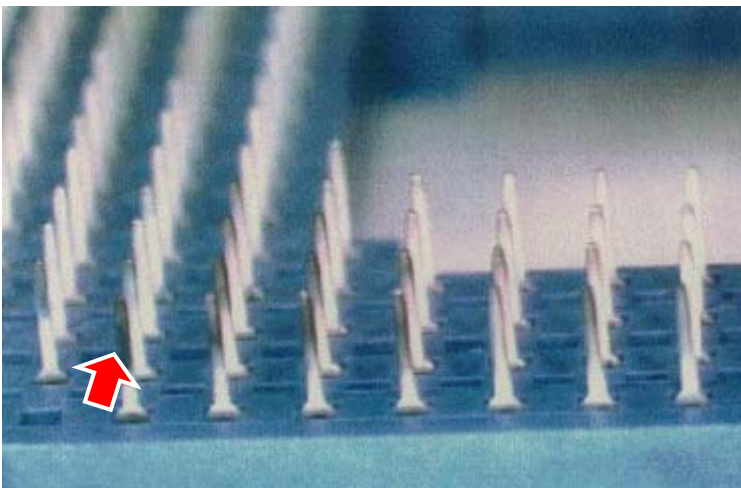
Figure 15



NOT ACCEPTABLE

Broken Solder Tail

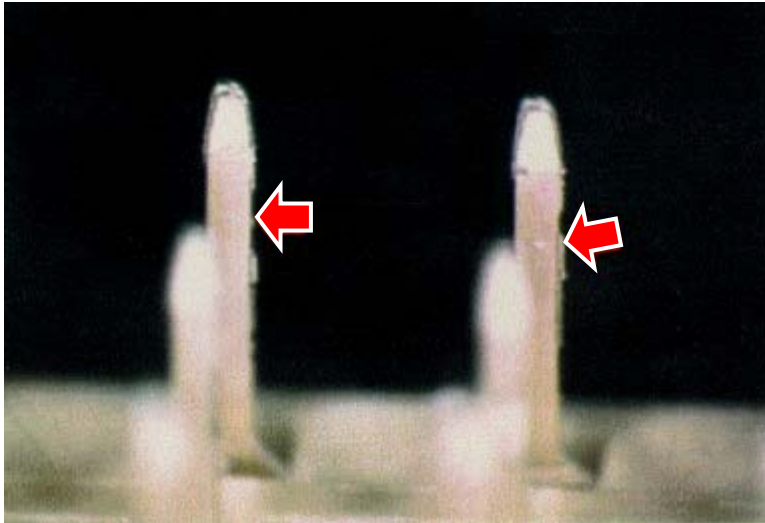
Figure 16



NOT ACCEPTABLE

Burnt Plating on
Solder Tails

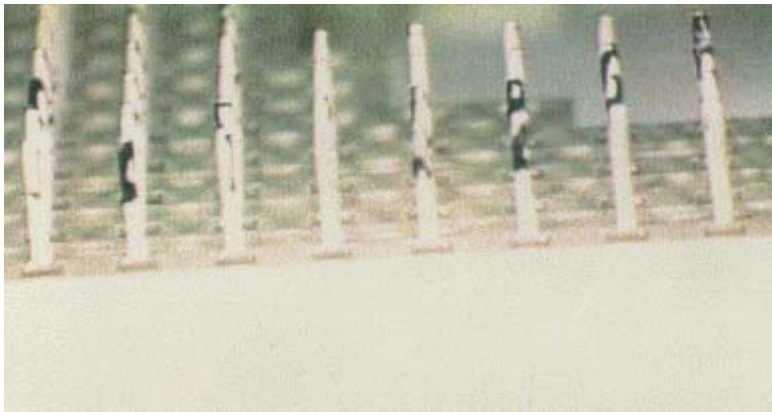
Figure 17



NOT ACCEPTABLE

Tin/Lead Plating Flaking
Off of Solder Tails

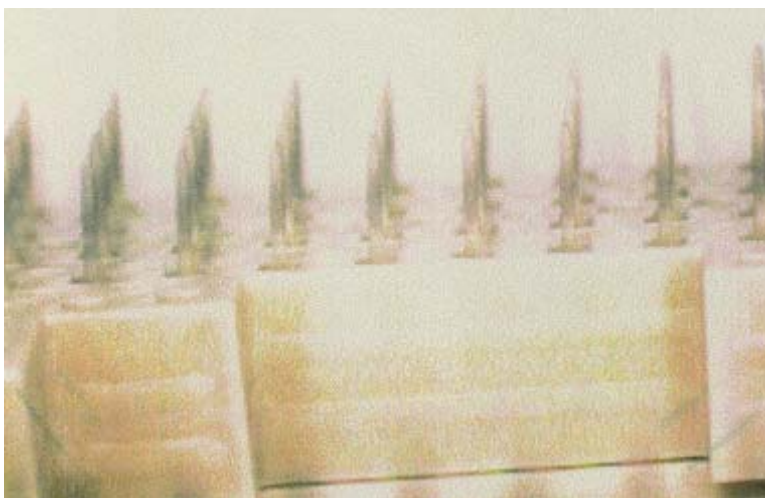
Figure 18



NOT ACCEPTABLE

Contamination on
Solder Tails

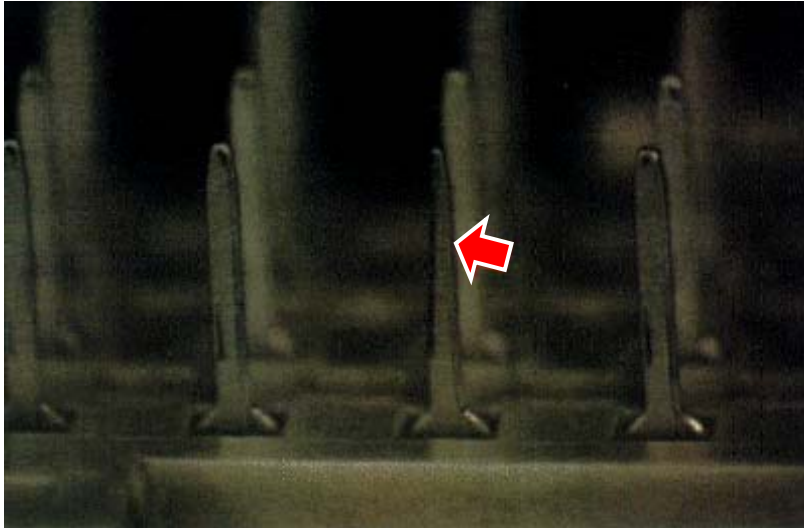
Figure 19



ACCEPTABLE

Slight Discoloration of Tin/Lead
Plating on Solder Tails

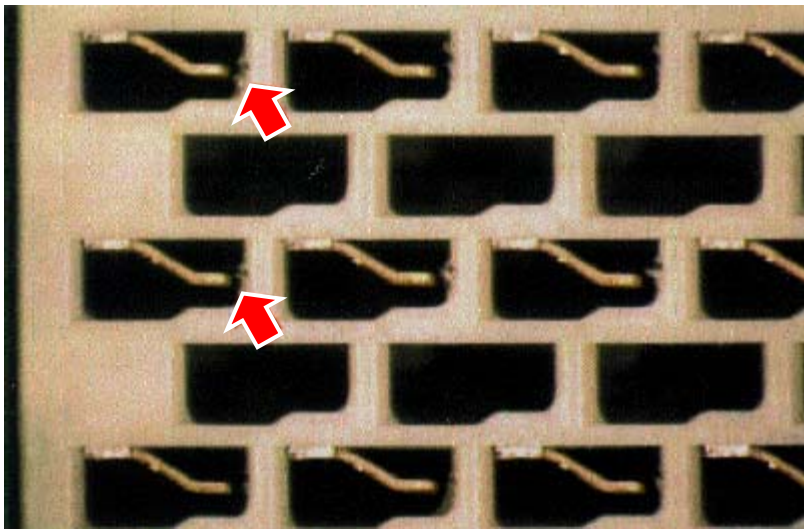
Figure 20



NOT ACCEPTABLE

Solder Tail Stamped
Incorrectly

Figure 21



NOT ACCEPTABLE

Housing Damaged Caused
During Contact Insertion

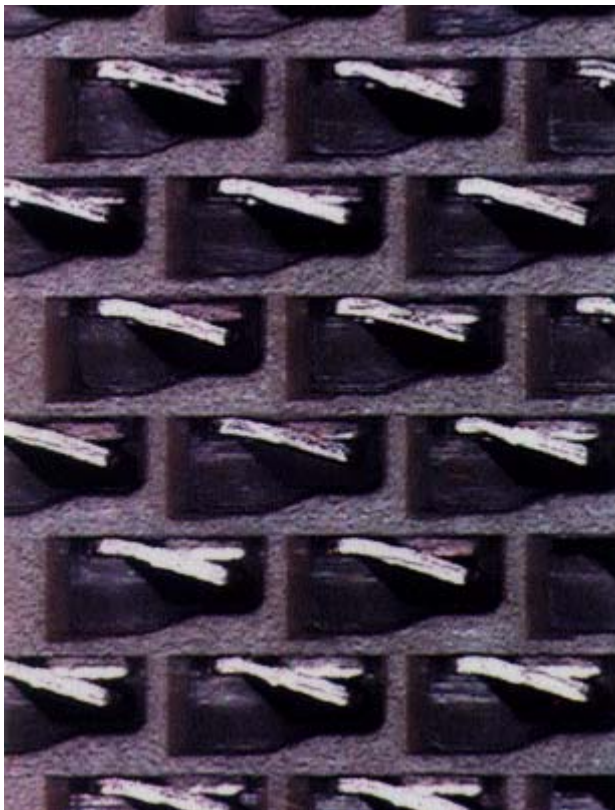
Figure 22



NOT ACCEPTABLE

Gold Must Completely
Cover Contact Flag, Per
Print Specification

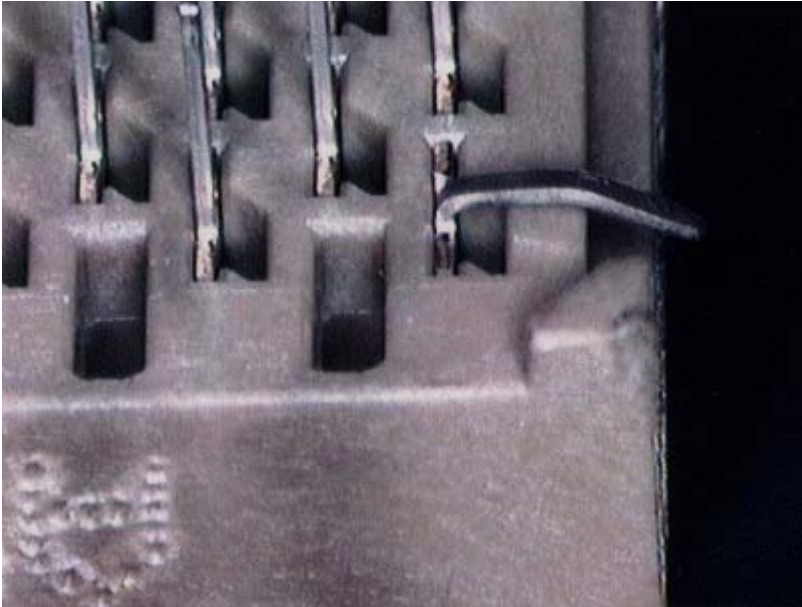
Figure 23



ACCEPTABLE

1. Contacts Properly Orientated to the End Wall and side Wall Gaps
2. No Missing or Mis-Inserted Contacts
3. No Standing Above or Below Housing Surface
4. Contacts are Formed Properly

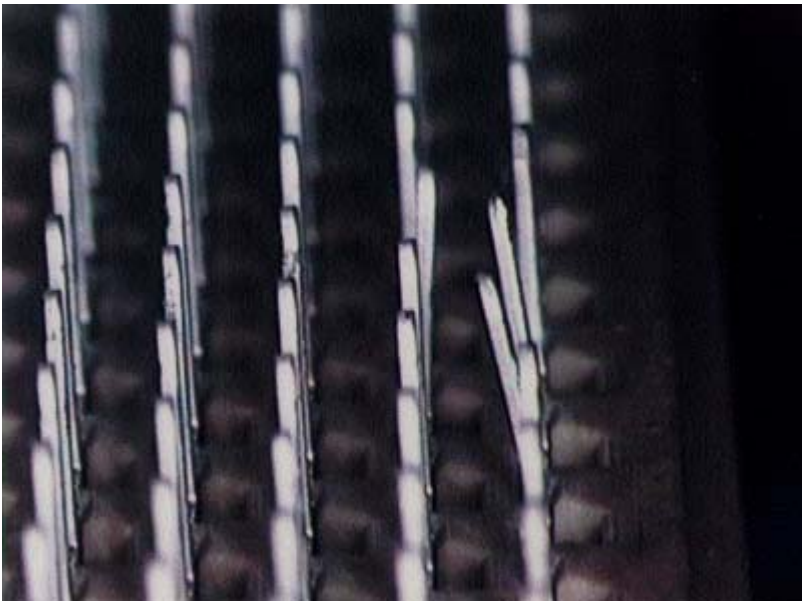
Figure 24



NOT ACCEPTABLE

Bent Solder Tails

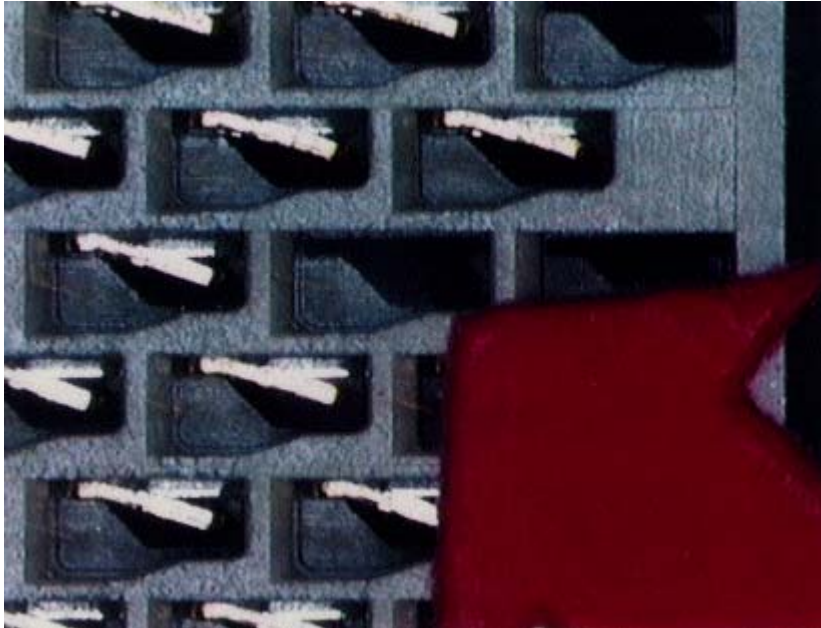
Figure 25



NOT ACCEPTABLE

Leaning Solder Tails
(Solder Tails Can Be Rebent,
After Rebending, Socket Must
Still Pass True Position Gauge)

Figure 26



NOT ACCEPTABLE

Missing Contacts From
Socket Pattern

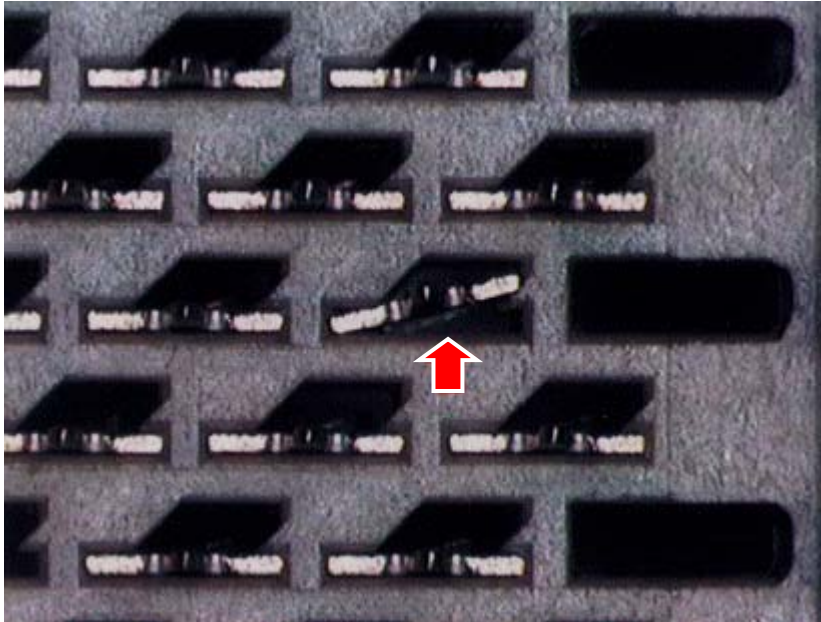
Figure 27



NOT ACCEPTABLE

Mis-Inserted Contact

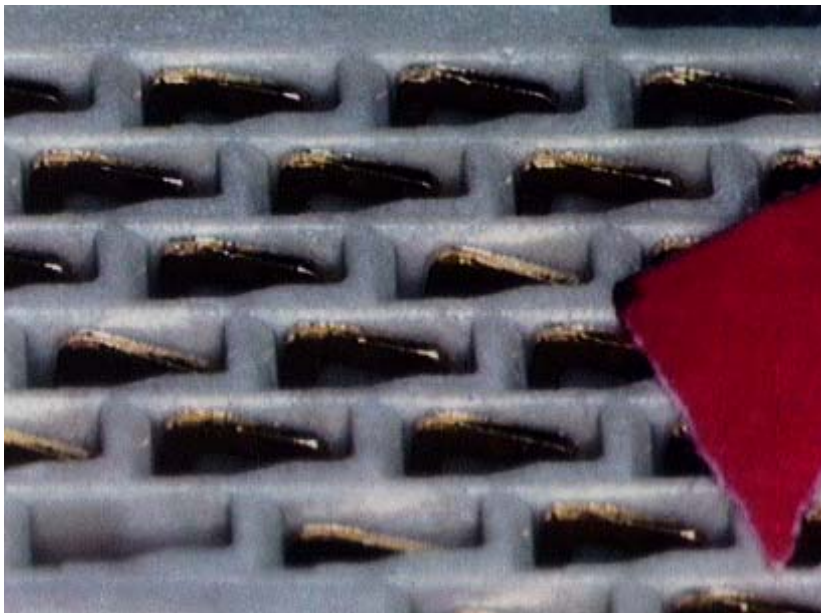
Figure 28



NOT ACCEPTABLE

Mis-Inserted Contact
(Twisted)

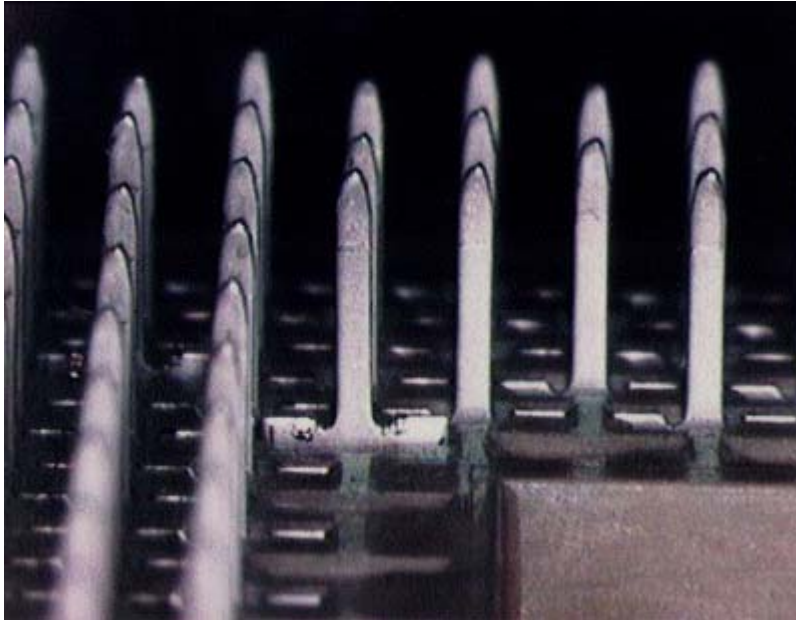
Figure 29



NOT ACCEPTABLE

Leaning Contact Flag
(Not to Exceed .010 Inch)

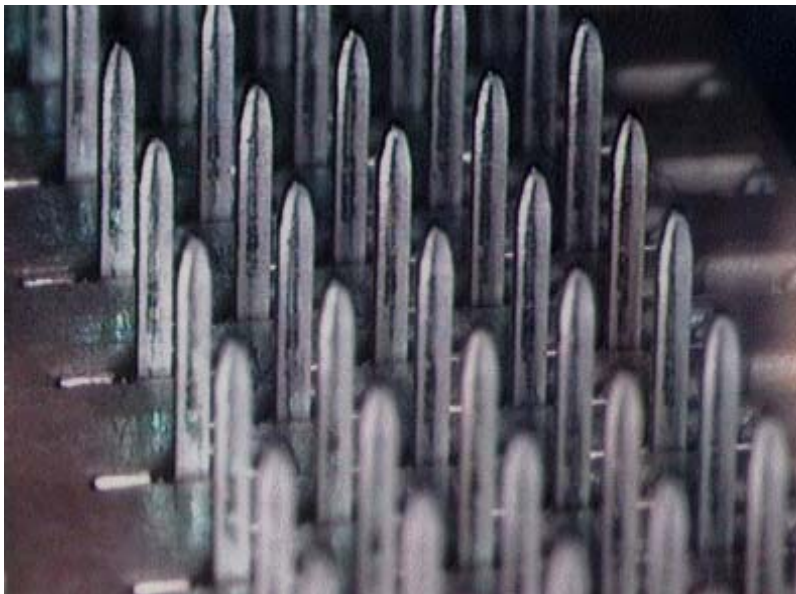
Figure 30



NOT ACCEPTABLE

Contact Standing Above
Housing Surface

Figure 31



ACCEPTABLE

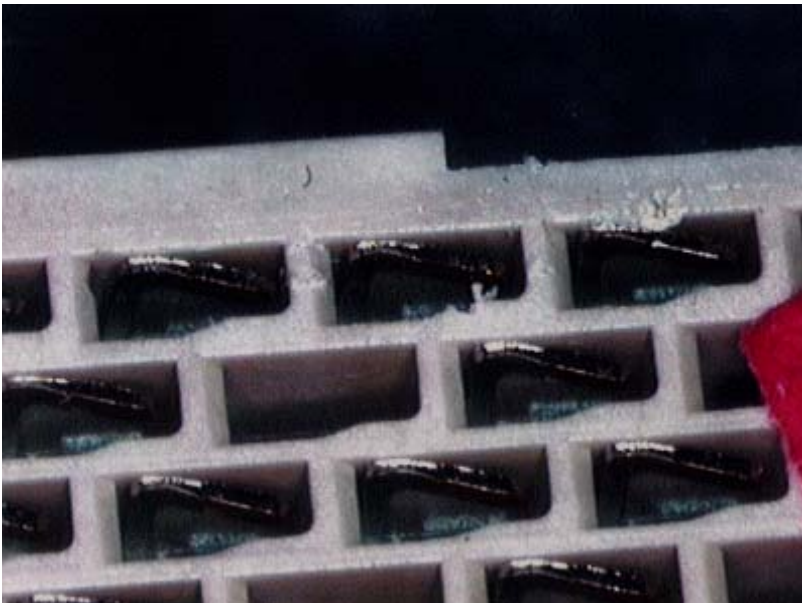
If Solder Tail Surface
is 50% Scratched, Machine
Must be Corrected

Figure 32



NOT ACCEPTABLE
Severe Housing Damage

Figure 33



ACCEPTABLE
Debris Must Be Removed
Prior to Assembly

Figure 34



NOT ACCEPTABLE

Housing Damage
From Date Coder

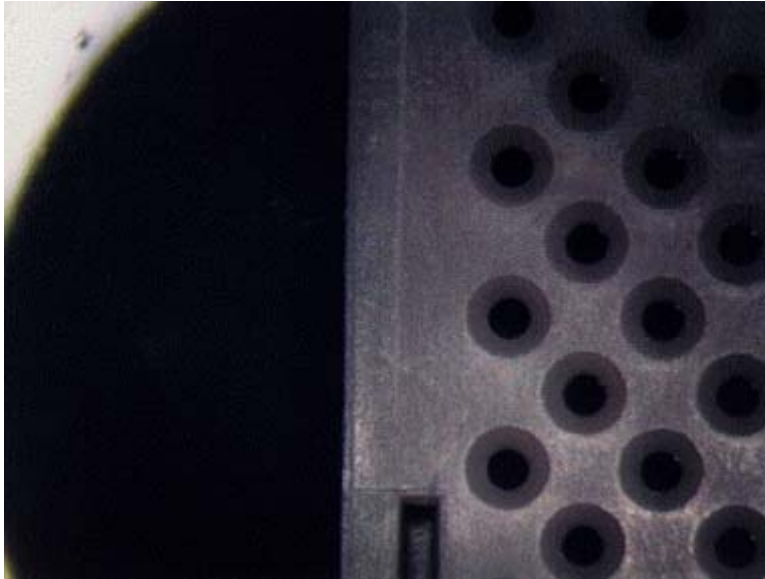
Figure 35



NOT ACCEPTABLE

Broken Standoff

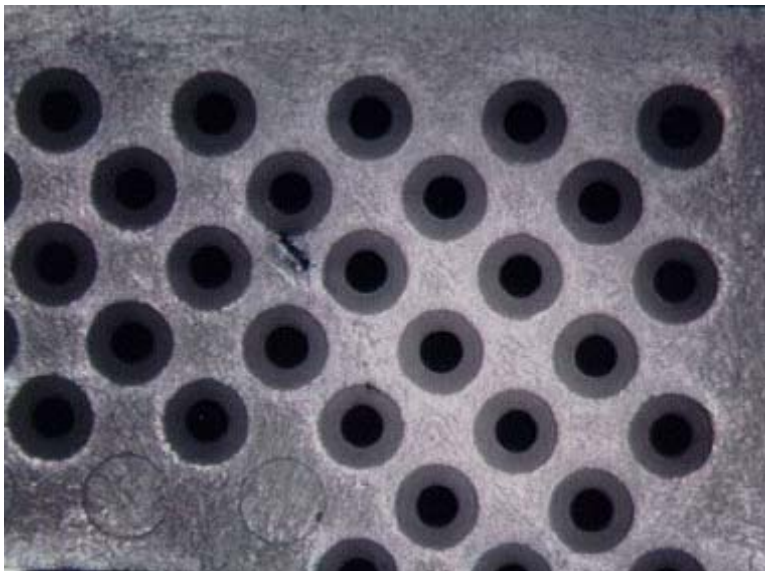
Figure 36



NOT ACCEPTABLE

Cracked Cover During Assembly.
There Should Be No Cracks
Over the Entire Cover Surface.

Figure 37



NOT ACCEPTABLE

Cover Contamination
if Contamination Can
Be Seen From an Arms
Length Away, it is
Unacceptable

Figure 38



NOT ACCEPTABLE

Multiple Contamination

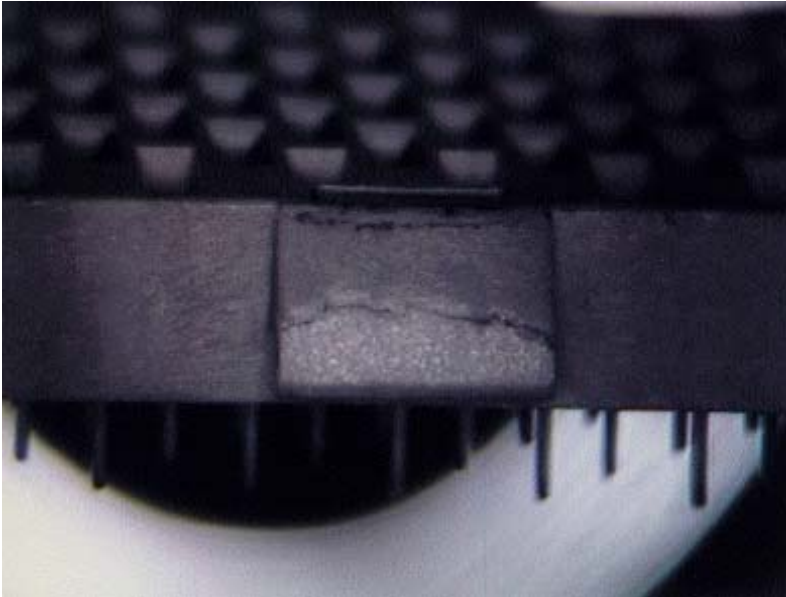
Figure 39



ACCEPTABLE

Difficult To See
at Arms Length

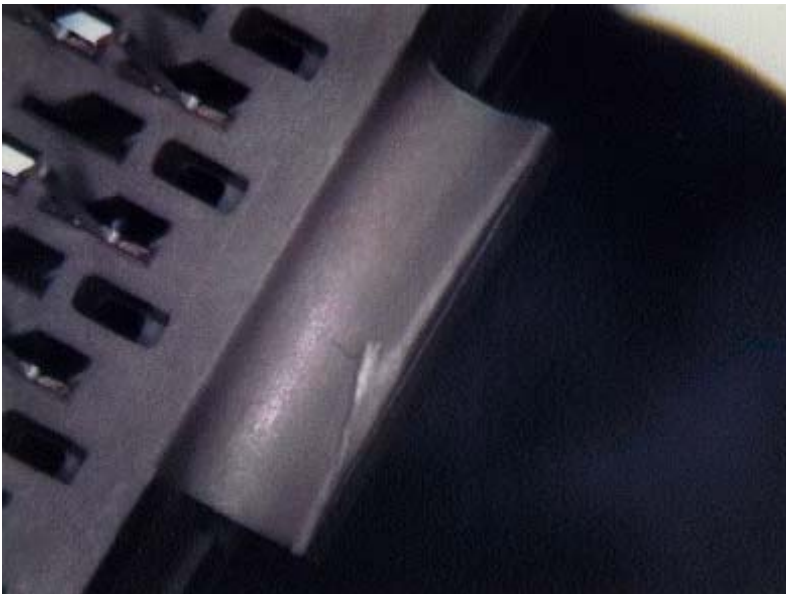
Figure 40



NOT ACCEPTABLE

Broken Heat Sink Latch

Figure 41



ACCEPTABLE

Damaged Heat Sink Latch.
Debris Must Be Removed
Before Assembly.

Figure 42