



The product described in this document has not been fully tested to ensure conformance to the requirements outlined below. Therefore, TE Connectivity (TE) makes no representation or warranty, express or implied, that the product will comply with these requirements. Further, TE may change these requirements based on the results of additional testing and evaluation. Contact TE Engineering for further details.

MCP 6.3 2P Plug/CAP ASSEMBLY

1. SCOPE

1.1. Content

This specification covers the requirements for product performance, test methods and quality assurance provisions of MCP 6.3 2P Plug/CAP Assembly

1.2. Qualification

When tests are performed on the subject product line, procedures specified in Figure 1 shall be used. All inspections shall be performed using the applicable inspection plan and product drawing.

1.3. Qualification Test Results

Successful qualification testing on the subject product line has not been completed. The Qualification Test Report number will be issued upon successful qualification testing.

2. APPLICABLE DOCUMENTS AND FORMS

The following documents and forms constitute a part of this specification to the extent specified herein. Unless otherwise indicated, the latest edition of the document applies.

2.1. TE Documents

- 114-61105: INTERFACE DRAWING FOR MCP 6.3 2P PLUG ASSEMBLY
- 1897213: Customer Drawing (MCP 6.3 2P CAP ASSEMBLY)
- 1897214: Customer Drawing (MCP 6.3 2P PLUG ASSEMBLY)

3. REQUIREMENTS

3.1. Design and Construction

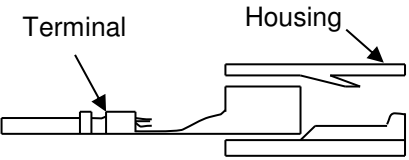
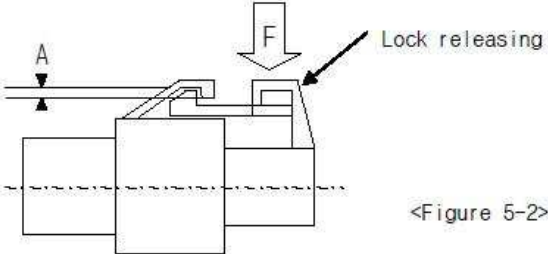
Product shall be of the design, construction, materials and physical dimensions specified on the applicable product drawing.

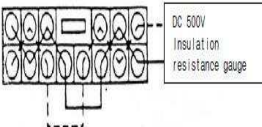
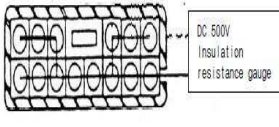
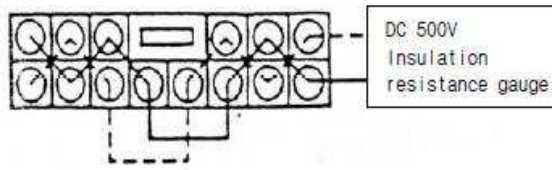
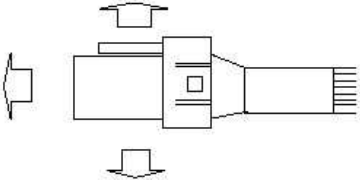
3.2. Ratings

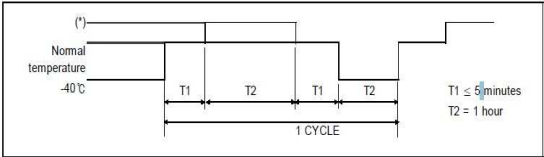
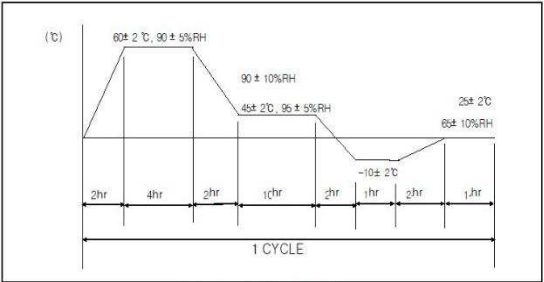
Voltage	Temperature	Humidity
12V DC	25±5°C	60±20%

3.3. Test Requirements and Procedures Summary

Unless otherwise specified, all tests shall be performed at ambient environmental conditions.

TEST DESCRIPTION	REQUIREMENT	PROCEDURE
Appearance	No crack, damage, distortion are permitted	Using sense of sight and touch.
CONN engage and disengage force	Max 10 kgf and less	Measure force by inserting and disengaging the connector with terminal assembled at constant 50 mm/min speed. However, remove lock part when measuring disengage force.
Reverse insertion between housings	It shall not be incorrectly inserted by applying force of 20kgf.	Insert the housing with terminal by pushing it in reverse direction with applying 20kgf.
Engage force between terminal and housing	Max 1.5kgf	<p>As shown in the following figure 4-1, measure the weight while inserting terminal into fixed housing at 50mm/min speed.</p>  <p><Figure 4-1></p>
Strength of HSG lock	Min 10kgf or less	Combine housing only, fix the one side of housing in completely locked condition, and extend the other side in axial direction and 30 angle direction at a constant speed of 50mm/min. Then measure weight when lock structure is disengaged or destroyed.
HSG lock releasing force	Max 6kgf	<p>Apply force (F) to lock releasing part, and measure weight on the point of A=0. However, cut connector and then perform test at the section in order to secure visibility.</p>  <p><Figure 5-2></p>
Terminal retention force	Min 8kgf	Fix the housing after inserting crimped terminals. Extend one line of cable in axial direction at a speed of 50mm/min at a position 50~100mm away from crimped part, and measure weight when terminal is disengaged from the housing.
Voltage Drop	Max 3mV/A	Measure the circuit voltage drop (V) by sending voltage and current described in the table 5-1 with terminal combined on the connector. Then calculate a voltage drop (VD) in terminal by subtracting cable resistance (L) from the circuit voltage drop (V).

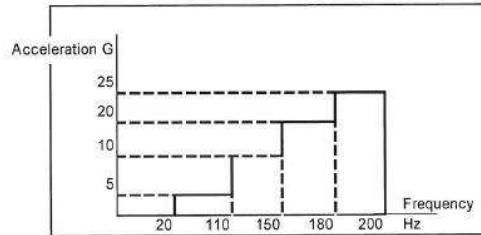
		<p>1)HARNESS versus UNIT:VD =V(L3+L4)</p> <table border="1"> <thead> <tr> <th>Application</th> <th>Open voltage</th> <th>Short circuit current</th> <th>Division</th> </tr> </thead> <tbody> <tr> <td>Signal circuit</td> <td>20 ± 5 mV</td> <td>10 mA</td> <td>ECU, Sensor</td> </tr> <tr> <td>Power circuit</td> <td>13 V</td> <td>1 A</td> <td>Other than the above</td> </tr> </tbody> </table> <p><Table5-1></p>		Application	Open voltage	Short circuit current	Division	Signal circuit	20 ± 5 mV	10 mA	ECU, Sensor	Power circuit	13 V	1 A	Other than the above
Application	Open voltage	Short circuit current	Division												
Signal circuit	20 ± 5 mV	10 mA	ECU, Sensor												
Power circuit	13 V	1 A	Other than the above												
Insulation resistance	Min 250 MΩ	<p>Measure resistance between neighbor terminals (figure 5-6), and between terminal and housing surface (figure 5-7) with DC 500V insulation resistance gauge with connector combined.</p>   <p><Figure 5-6: Between neighboring terminals> <Figure 5-7: Between neighboring terminal and housing surface></p>													
Leakage current	1 μA or less	<p>Measure it by applying DC 14V between neighboring terminals (figure 5-6).</p>  <p><Figure 5-6: Between neighboring terminals></p>													
High voltage test	No allowed insulation breakdown	<p>Measured by applying test potential of 1000 V AC between the adjacent contact between the contact and housing.</p>													
Twisting Test - Connector Engage and Disengage Endurance Test	Appearance	No crack, damage, distortion are permitted													
	Max 10mV/A		<p>Apply 8kgf force on the end part of combined connector 10 times each in the (front, rear, left, right) directions perpendicular to axial direction.</p> <p>Make combine connectors engage and disengage at 100mm/min. Perform it 50 times. (Do not use locking device)</p>												
Cold temperature test	Appearance	No crack, damage, distortion are permitted													
	Voltage Drop	Max 10mV/A													
	Insulation Resistance	Sealed CONN'R :	Between terminals	<p>Engage and disengage connector with terminal assembled 10 times with hands, and leave it in temperature chamber of -40°C for 120 hours. Make connector engaged and disengaged 5 times immediately, and drop it onto the concrete surface from 1m height 3 times in the direction of figure 6-1. (Voltage drop & Temperature rise test perform at normal temperature) :</p>  <p><Figure 6-1></p>											
		Min 100 MΩ	housing surface												
	Current Leakage	Max 100 μA													
	Temperature Rise	Max 40°C													
Sealing	Min 0.5kgf/cm ²														
Appearance	No crack, damage,	Engage and disengage Connector with terminal assembled 10													

Cold and hot temperature shock test		distortion are permitted		times with hands, this repeats 200 CYCLE by below test condition. (ENG ROOM : 120°C, ENG ROOM except : 80°C) 				
	Voltage Drop	Max 10mV/A						
	Sealing	Min 0.5kgf/cm ²						
High temperature test	Appearance	No crack, damage, distortion are permitted		Engage and disengage connector with terminal assembled 10 times with hands, and leave it in combined state at the temperature chamber of the table 6-1 for 300 hours. Then pick it out and leave it until it returns to normal temperature. <table border="1" data-bbox="786 569 1343 682"> <thead> <tr> <th>High Temperature</th> <th>Connector Using Part</th> </tr> </thead> <tbody> <tr> <td>120°C</td> <td>Waterproof Connector</td> </tr> </tbody> </table>	High Temperature	Connector Using Part	120°C	Waterproof Connector
	High Temperature	Connector Using Part						
	120°C	Waterproof Connector						
Voltage Drop	Max 10mV/A							
Sealing	Min 0.5kgf/cm ²							
Temperature Humidity Test	Appearance	No crack, damage, distortion are permitted		Engage and disengage connector with terminal assembled 10 times with hands, and leave it at 25°C ambient temperature and 65% relative humidity for 25 hours. And perform 5 cycles of the method specified in figure 6-3. Then pick connector out of chamber and dry it for 2 hours or more.  < Figure 6-3 : Test pattern >				
	Voltage Drop	Max 10mV/A						
	Insulation Resistance	Min 100 MΩ	Between terminals		housing surface			
	Current Leakage	Max 100 μA						
	Sealing	Min 0.5kgf/cm ²						
Dust Test	Appearance	No crack, damage, distortion are permitted		Engage and disengage connector with terminal assembled 10 times with hands, and diffuse 1.5kg Portland cement(JIS R5210) with fan (or others) for 10 seconds per 15 minutes while maintaining 150mm distance from wall in the closed container of 900~1200mm length, width and height, with connector combined. After 1 hour, measure it.				
	Voltage Drop	Max 10mV/A						
	Sealing	Min 0.5kgf/cm ²						
Waterproof Test	Appearance	No crack, damage, distortion are permitted		Make combined connectors engaged and disengaged 10 times with hands, and leave it in combined state at 120 °C ambient temperature for 40 minutes and then spray water of normal temperature for 2 minutes according to S2 of JIS D0203. Repeat 48 cycles of this. * JIS D0203 S2 condition: attach specimen at 400mm distance from the waterproof pipe with water spray hole or water discharge hole and rotate waterproof pipe 23 times per minute around the axis.				
	Insulation Resistance	Min 100 MΩ	Between terminals		housing surface			
	Current Leakage	Max 100 μA						
	Sealing	Min 0.5kgf/cm ²						
	Appearance	No crack, damage, distortion are		Engage and disengage connector with terminal assembled 10 times with hands, and perform test each sample with				

Oil and liquid test		permitted		connector combined. A. Immerse connector in combined state for 2 hours in mixed oil of 50± 2°C ENG oil (SAE10W) or equivalent oil and B. Immerse connector in combined state for 1 hour in car gasoline (JIS K2202) at normal temperature, and then pick it out. C. Immerse connector in combined state for 1 hour in brake liquid (pure product) at normal temperature, and then pick it out. D. Immerse connector in combined state for 1 hour in 100% washer liquid (pure product) at normal temperature, and then pick it out. E. Immerse connector in combined state for 1 hour in 50% LLC (Long life coolant) at normal temperature, and then pick it out.	
	Voltage Drop	Max 10mV/A			
	Sealing	Min 0.5kgf/cm ²			
Ozone Test	Appearance	No crack, damage, distortion are permitted		Engage and disengage Connector with terminal assembled 10 times with hands, and samples keep at 40°C and 50±5pphm Ozone for 100hour. Then pick connector out of chamber and dry it for 2hours or more.	
	Voltage Drop	Max 10mV/A			
	Sealing	Min 0.5kgf/cm ²			
Salt Water Test	Appearance	No crack, damage, distortion are permitted		Engage and disengage connector with terminal assembled 10 times with hands, and put it in 35°C temperature regulation chamber, spray 5% salty water for 24 hours according to JIS Z2371, and, maintain room temperature without spray for 1 hour, Then repeat this four times. Then pick connector out of chamber and dry it at room temperature for 2 hours or more.	
	Voltage Drop	Max 10mV/A			
	Insulation Resistance	Min 100 MΩ	Between terminals		housing surface
			housing surface		
Current Leakage	Max 100 μA				
Sulfur (SO ₂) gas test	Appearance	No crack, damage, distortion are permitted		Engage and disengage connector with terminal assembled 10 times with hands, and expose it in combined state to sulfur gas of 40±3°C, density 10ppm, humidity 90~95%, for 24 hours. Then pick connector out of chamber and dry it for 2 hours or more.	
	Voltage Drop	Max 10mV/A			
	Sealing	Min 0.5kgf/cm ²			
Mechanical shock test	Instant short circuit: Max 10 μs		Engage and disengage Connector with terminal assembled 10 times with hands, and apply 1960, 3920, 5880, 9822 m/s ² shock in each direction of figure 20 and 21 using assembled male and female samples. Perform test in current application condition of DC13V open voltage and 10mA short circuit current. HARNESS 200mm or more < Fig. 6-4 > UNIT < Fig. 6-5 >		

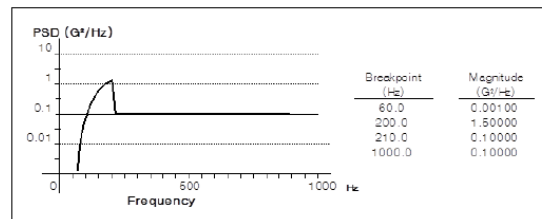
Complex environment endurance test	Appearance	No crack, damage, distortion are permitted		Engage and disengage connector with terminal assembled 10 times with hands, and leave it in combined state in the temperature chamber of 120°C or 80°C (follows table 7) for 48 hours. And then perform the following vibration test. Then measure instant short circuit according to the method of clause 4.16 for 4 hours for X, Y, Z each. 1) Sin Wave Test												
	Crimp Tensile Strength	0.5SQ	Min 9kgf													
		4.0SQ	Min 37.5kgf													
	Voltage Drop	Max 10mV/A														
	Temperature Rise	Max 40°C (Base Current: 17.625A)														
	Instant short circuit	Max 10μs														
Sealing		Min 0.5kgf/cm ²	2) Random Wave Test													
			<table border="1"> <thead> <tr> <th>Division</th> <th>Condition</th> </tr> </thead> <tbody> <tr> <td>Ambient temperature/humidity</td> <td>Refer to figure 4-8, 90~95%</td> </tr> <tr> <td>Applied current</td> <td>Basic current (Connector electrodes in series.)</td> </tr> <tr> <td>Current application cycle</td> <td>24 CYCLE (45 minutes-ON, 15 minutes-OFF)</td> </tr> <tr> <td>Vibration acceleration</td> <td>Follow figure 6-8</td> </tr> <tr> <td>Frequency</td> <td>20Hz ~ 200Hz (sweep time: 3 minutes or less)</td> </tr> <tr> <td>Vibration time</td> <td>8 hours for X, Y, Z each</td> </tr> <tr> <td>Connector attaching method</td> <td>Test mode D, E, F</td> </tr> </tbody> </table>	Division	Condition	Ambient temperature/humidity	Refer to figure 4-8, 90~95%	Applied current	Basic current (Connector electrodes in series.)	Current application cycle	24 CYCLE (45 minutes-ON, 15 minutes-OFF)	Vibration acceleration	Follow figure 6-8	Frequency	20Hz ~ 200Hz (sweep time: 3 minutes or less)	Vibration time
Division	Condition															
Ambient temperature/humidity	Refer to figure 4-8, 90~95%															
Applied current	Basic current (Connector electrodes in series.)															
Current application cycle	24 CYCLE (45 minutes-ON, 15 minutes-OFF)															
Vibration acceleration	Follow figure 6-8															
Frequency	20Hz ~ 200Hz (sweep time: 3 minutes or less)															
Vibration time	8 hours for X, Y, Z each															
Connector attaching method	Test mode D, E, F															

Division	Condition
Ambient temperature/humidity	Refer to figure 4-8, 90~95%
Applied current	Basic current (Connector electrodes in series.)
Current application cycle	120 CYCLE (45 minutes-ON, 15 minutes-OFF)
Vibration acceleration	Follow figure 6-7
Frequency	20Hz ~ 200Hz (sweep time: 3 minutes or less)
Vibration time	40 hours for X, Y, Z each
Connector attaching method	Test mode A, B, C



2) Random Wave Test

Division	Condition
Ambient temperature/humidity	Refer to figure 4-8, 90~95%
Applied current	Basic current (Connector electrodes in series.)
Current application cycle	24 CYCLE (45 minutes-ON, 15 minutes-OFF)
Vibration acceleration	Follow figure 6-8
Frequency	20Hz ~ 200Hz (sweep time: 3 minutes or less)
Vibration time	8 hours for X, Y, Z each
Connector attaching method	Test mode D, E, F



3.4. Applied Part No List

TE Part no	Description
1897213-2	MCP 6.3 2P CAP HSG
1897214-1	MCP 6.3 2P PLUG ASSY