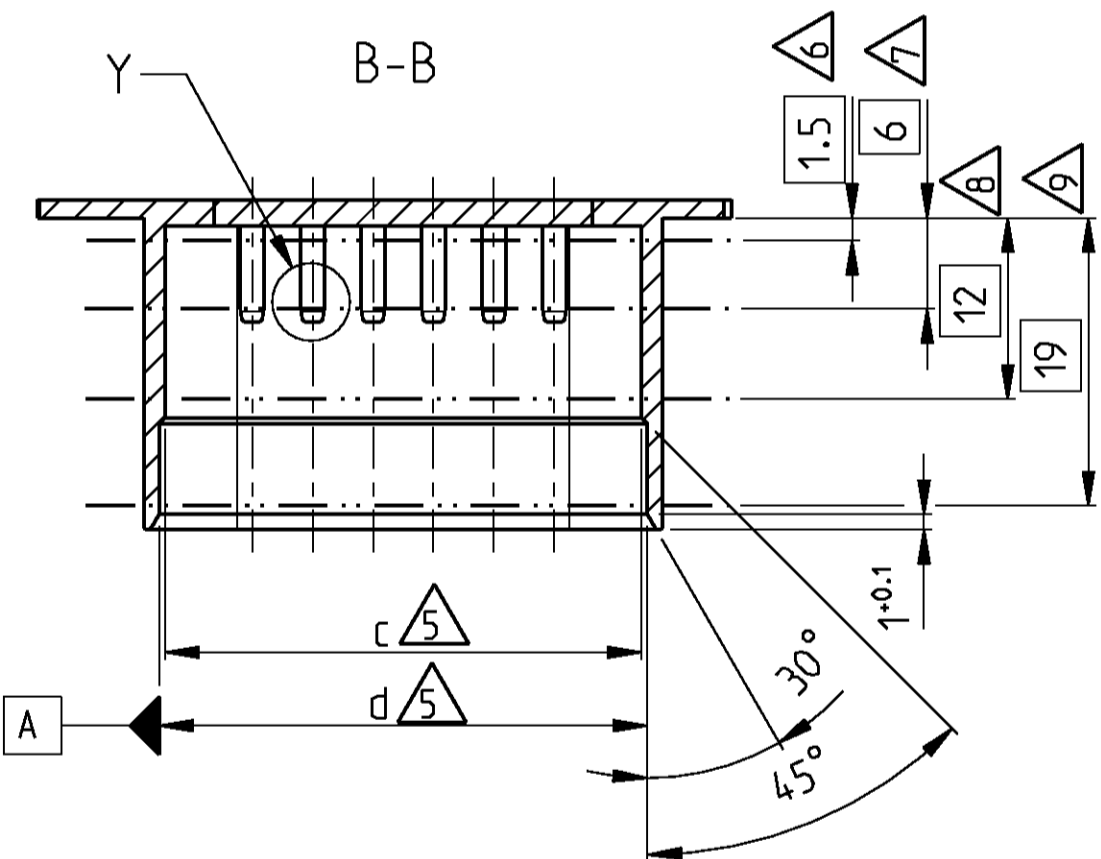
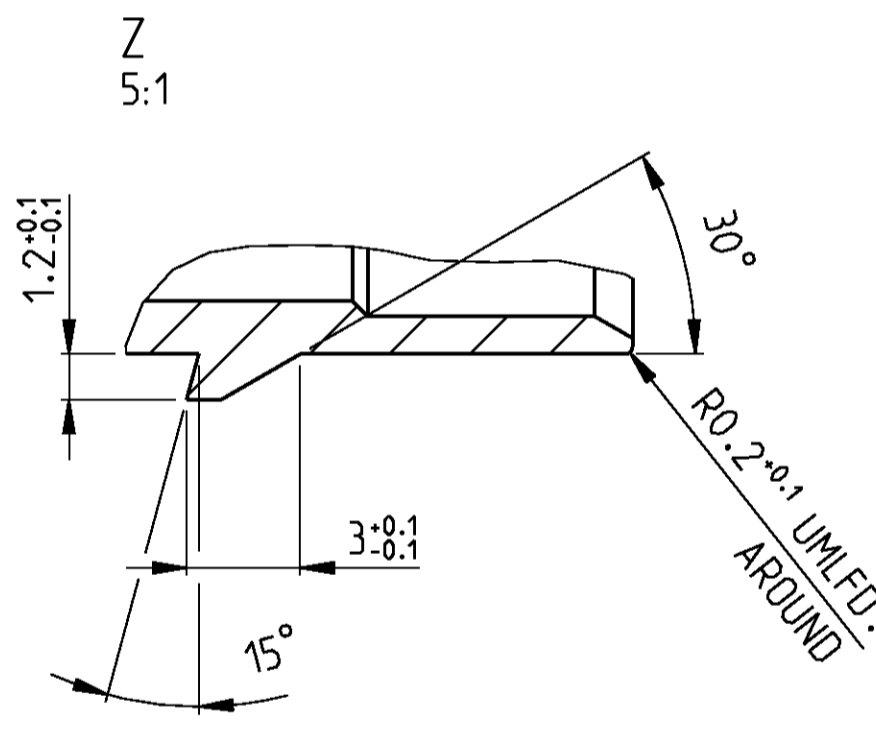
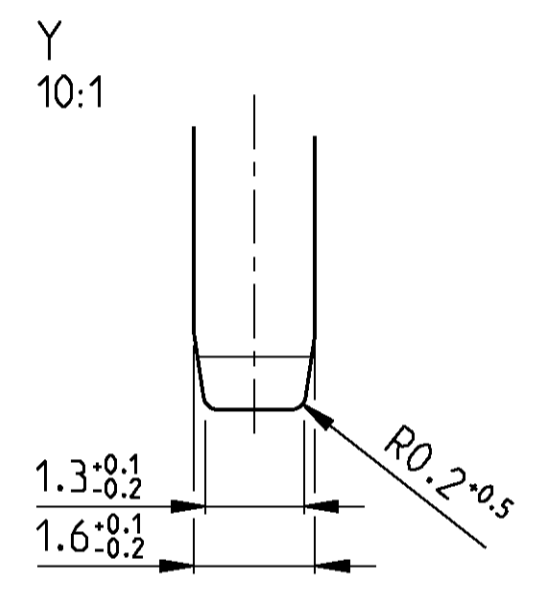
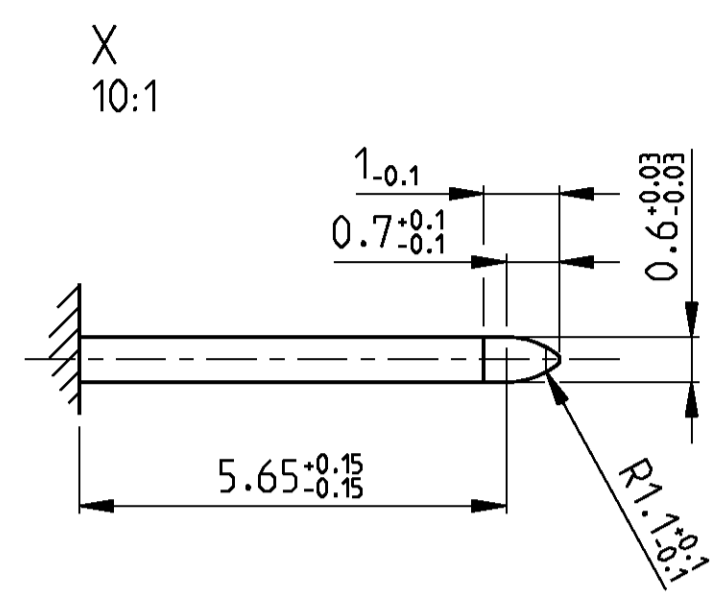
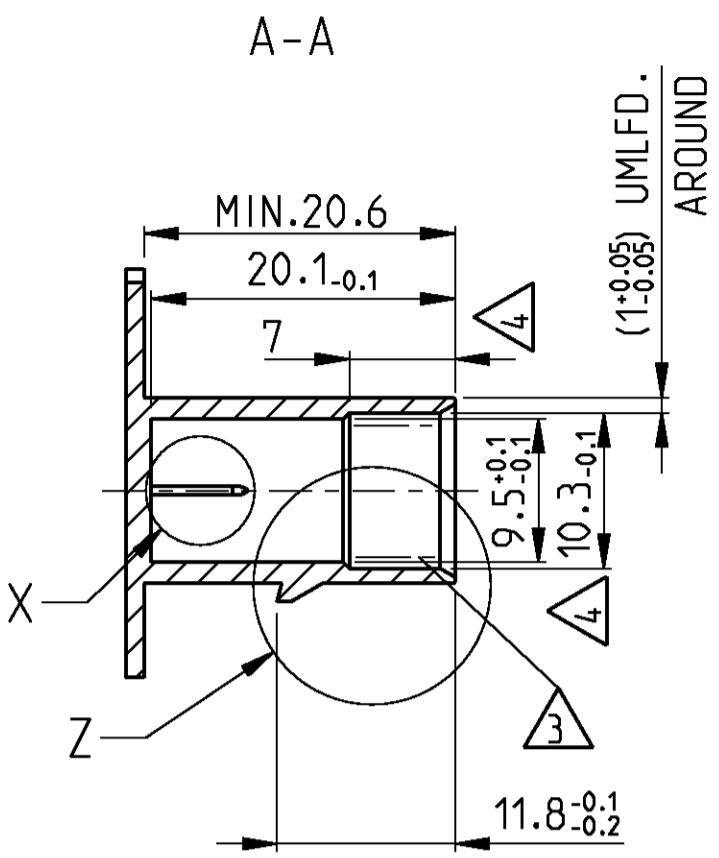
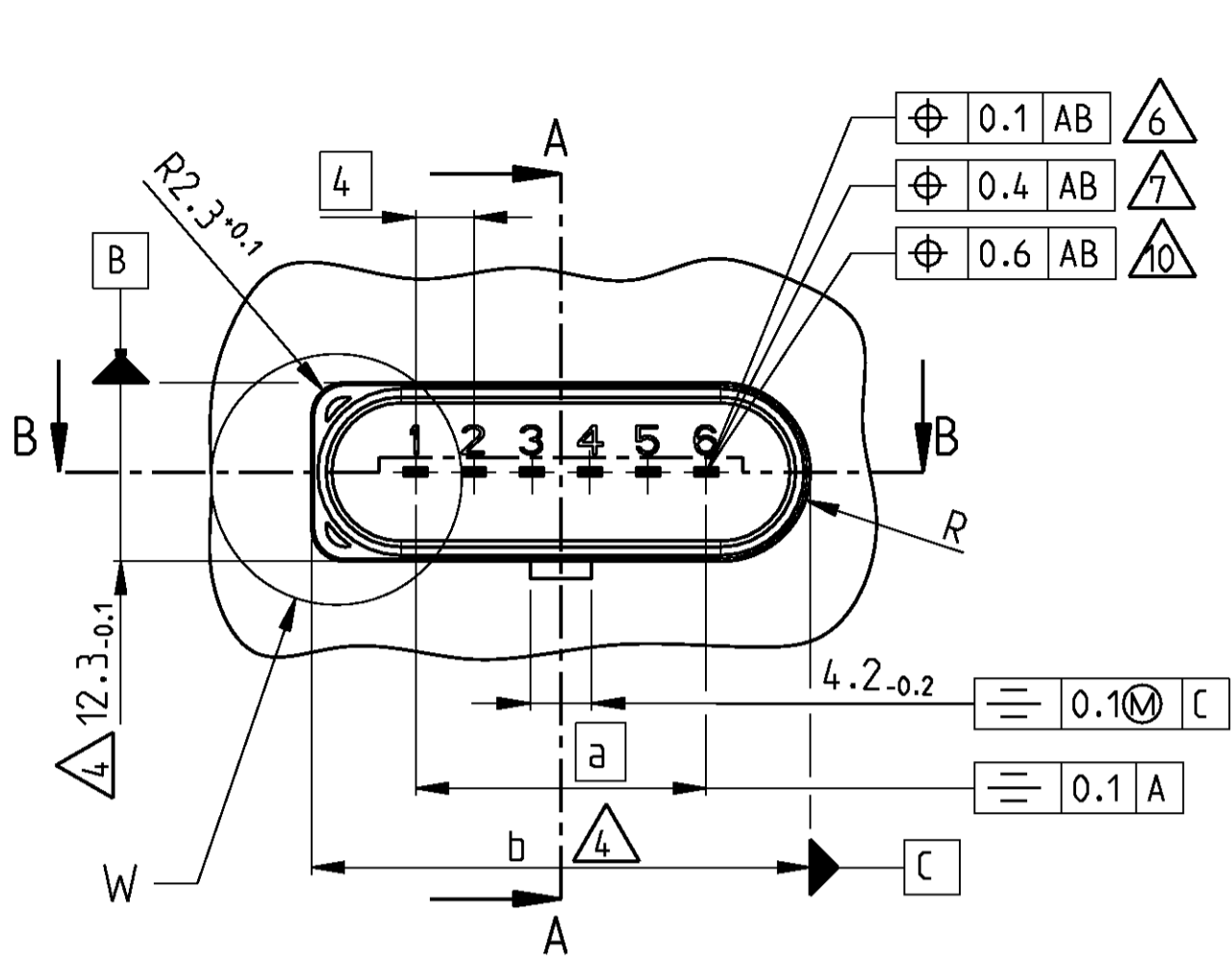
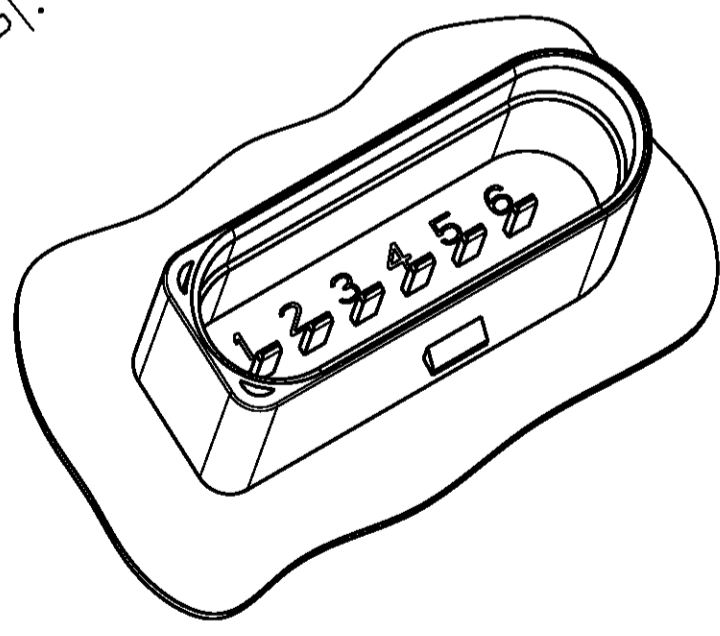
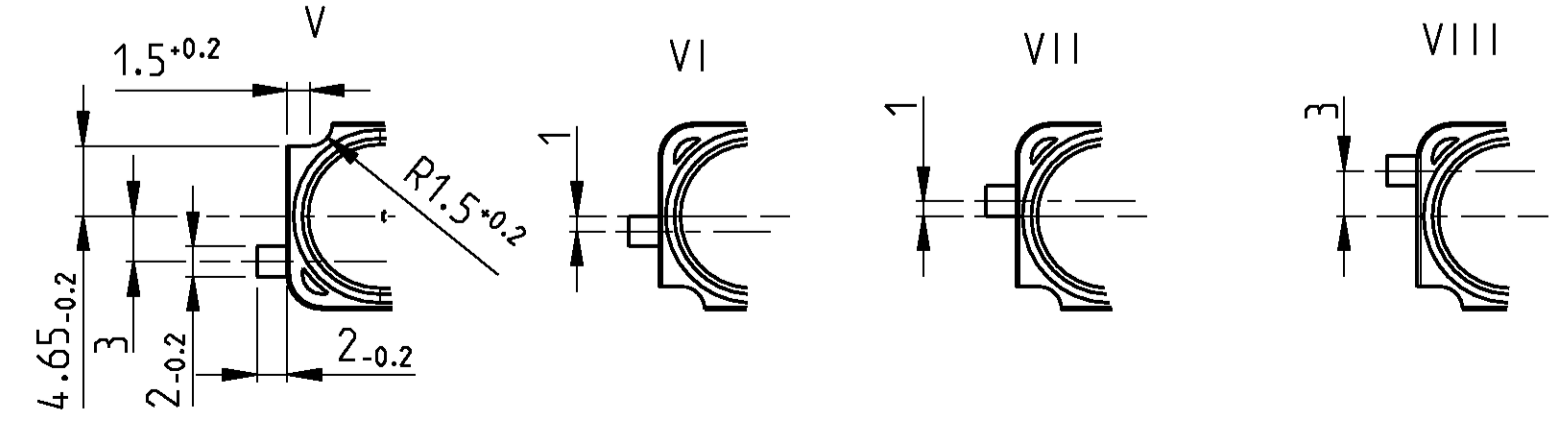
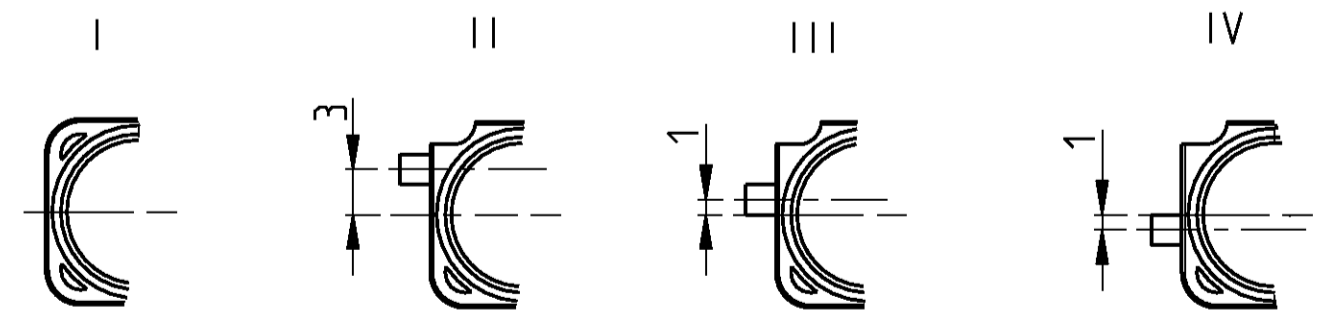


THIS DRAWING IS UNPUBLISHED. VERTRÄULICHE UNVERÖFFENTLICHTE ZEICHNUNG. RELEASED FOR PUBLICATION FREI FUER VERÖFFENTLICHUNG. 2009. MATED WITH PASSEND ZU. COPYRIGHT 2009 BY TYCO ELECTRONICS CORPORATION. ALL RIGHTS RESERVED. ALLE RECHTE VORBEHALTEN.

LOC	DIST	REVISIONS					
A1	-	P	LTR	DESCRIPTION	DATE	DWN	APVD
PROJEKT NR.: EGATN09253		A		NEW DRAWING	31MAR2009	TS	Thiel
		A1		DRAWING NUMBER CORRECTED	10JUL2009	-	-



W
2:1



NOTES

- 1 CONTACT CAVITY NUMBER: CHARACTERS ACC. TO DIN 1451-H2. RECEDE 0.2
- 2 NOT SPECIFIED RADII R0.2
- 3 SEALING AREA AROUND: NO BURRS, NO MOLD SEPARATING LINE. NO INJECTION POINT PERMITTED; Ra <= 0.003 FOR MOLD SURFACE
- 4 ALLOWED WARPAGE -0.2, MEASUREMENT LEVEL 3/4
ALLOWED WARPAGE -0.3, MEASUREMENT LEVEL 1
- 5 ALLOWED WARPAGE -0.1, MEASUREMENT LEVEL 3/4
ALLOWED WARPAGE -0.2, MEASUREMENT LEVEL 1
- 6 MEASUREMENT LEVEL 1
- 7 MEASUREMENT LEVEL 2
- 8 MEASUREMENT LEVEL 3
- 9 MEASUREMENT LEVEL 4
- 10 ONLY FOR SNAP IN CONTACTS

BEMERKUNGEN

- 1 KONTAKTKAMMERNUMMER: SCHRIFT NACH DIN 1451-H2, VERTIEFT 0.2
- 2 UNBEMASSTE RADIIEN R0.2
- 3 DICHTFLAECHE UMLAUFEND: KEIN GRAT, KEINE WERKZEUGTRENNUNG, KEIN ANSPRITZPUNKT ZULAESSIG Ra <= 0.003 AM WERKZEUG
- 4 ZULAESSIGER VERZUG -0.2, MESSEBENE 3/4
ZULAESSIGER VERZUG -0.3, MESSEBENE 1
- 5 ZULAESSIGER VERZUG -0.1, MESSEBENE 3/4
ZULAESSIGER VERZUG -0.2, MESSEBENE 1
- 6 MESSEBENE 1
- 7 MESSEBENE 2
- 8 MESSEBENE 3
- 9 MESSEBENE 4
- 10 NUR FUER VERRASTETE FLACHSTECKER

d	-0.1	12.3	16.3	20.3	24.3	28.3	32.3
c	-0.1	11.5	15.5	19.5	23.5	27.5	31.5
b	-0.1	14.3	18.3	22.3	26.3	30.3	34.3
a	-	4	8	12	16	20	
DIMENSION/ MASS		1	2	3	4	5	6
		POSITION/POLZAHL					

THIS DRAWING IS A CONTROLLED DOCUMENT FOR TYCO ELECTRONICS CORPORATION IT IS SUBJECT TO CHANGE AND THE CONTROLLING ENGINEERING ORGANIZATION SHOULD BE CONTACTED FOR THE LATEST REVISION. DIESES ZEICHNUNGSDOKUMENT WIRD DURCH AMF INCORPORATED KONTROLLIERT. ANSCHLIESSEN, FÜR DEN TECHNISCHEN FORTSCHRITT BEZUGS, SIND VERWANDLICH. DER LETZTE LETZTBELIEBIGEN ANWENDUNGSSTAND BEWAHREN SIE AUF.		DWN T. Schmoeker 31MAR2009 CHK F. Thiel 03APR2009	Tyco Electronics 64625 Bensheim (Germany)
DIMENSIONS: MASSEINHEITEN: [mm]	TOLERANCES UNLESS OTHERWISE SPECIFIED: ALLGEMEINTEOLERANZEN 1. PLC ±ACC. TO 2. PLC ±DIN 16901-120 3. PLC ±CENTRIC TO 4. PLC ±NOMINAL DIM 5. PLC ±1° ANGLES/WINKEL FINISH/OBERFLAECHE/FARBE	PRODUCT SPEC - APPLICATION SPEC - WEIGHT - CUSTOMER DRAWING	NAME TERMINATION, 1-6 POSITION. RADIAL SEAL, 1.6 MM TAB ANSCHLUSS, 1-6POLIG, RADIALDICHT 1.6MM FLACHSTECKER SIZE A2 CAGE CODE 00779 DRAWING NO. 114-18984 RESTRICTED TO MUR FLER SHEET 1 OF 1 REV A1