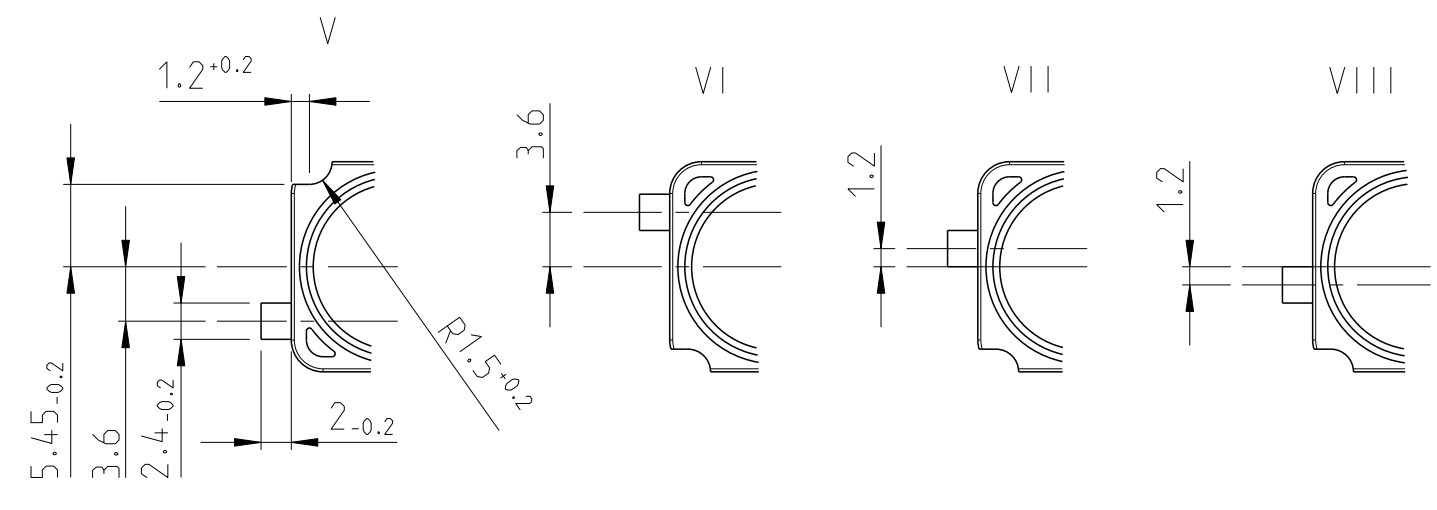
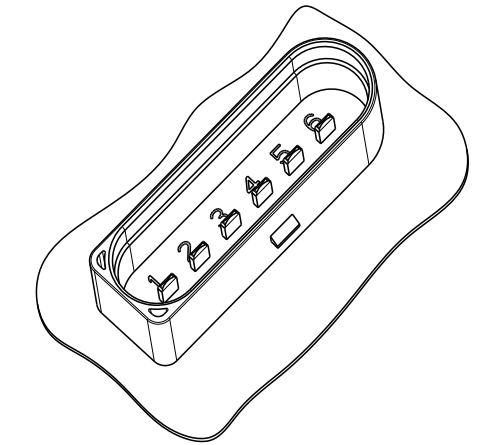
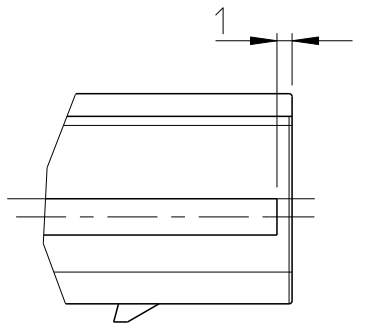
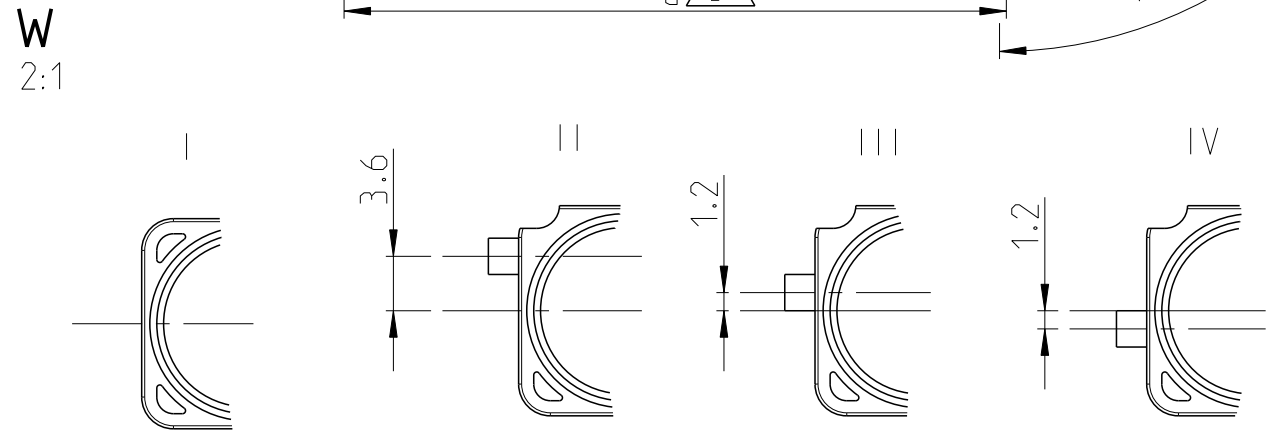
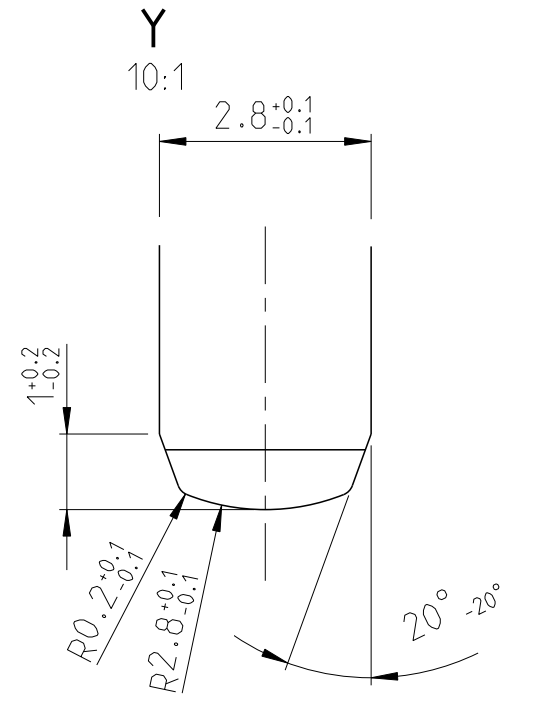
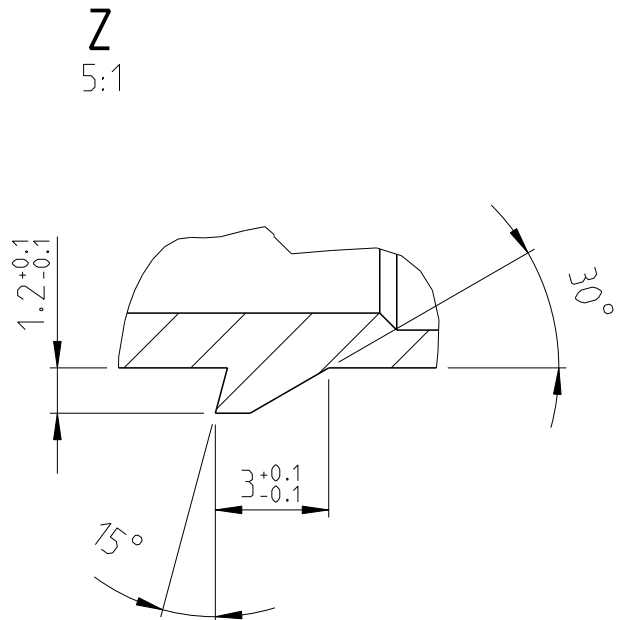
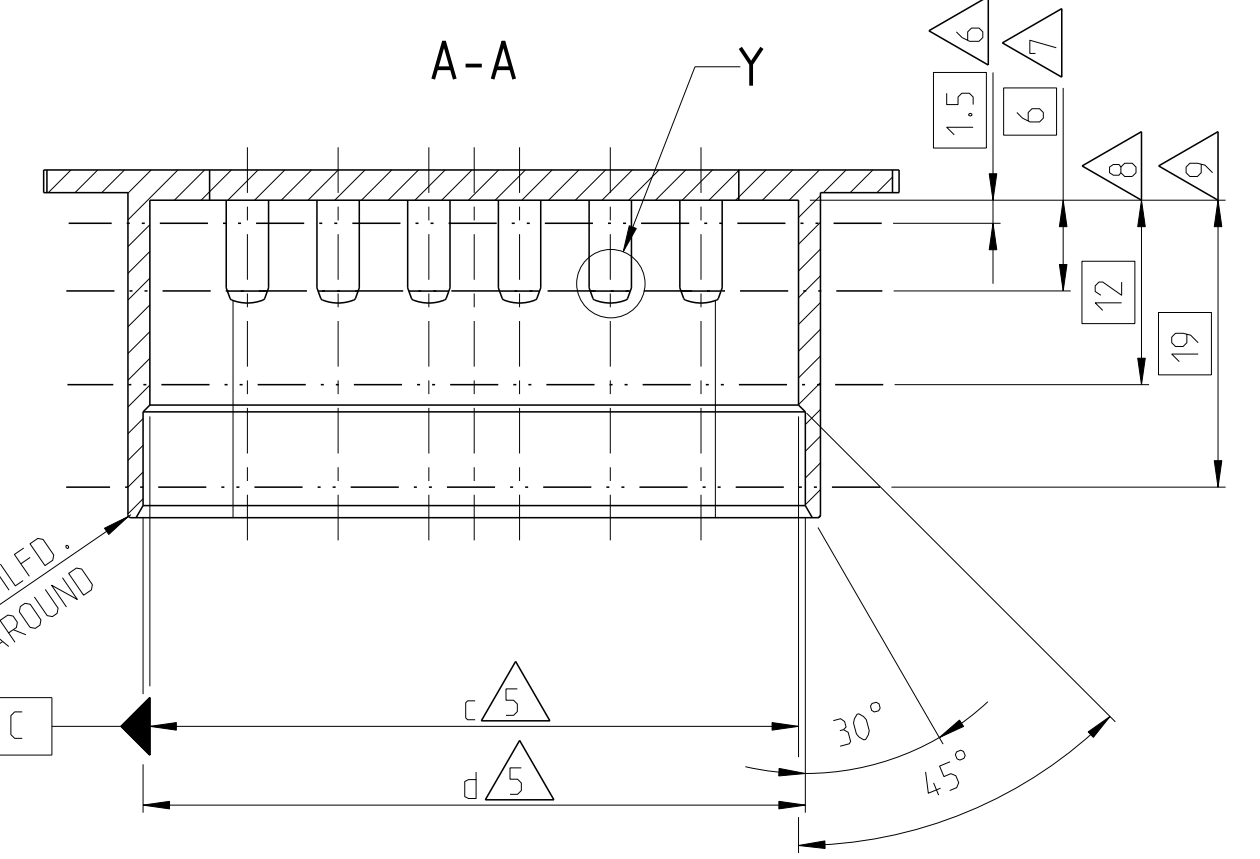
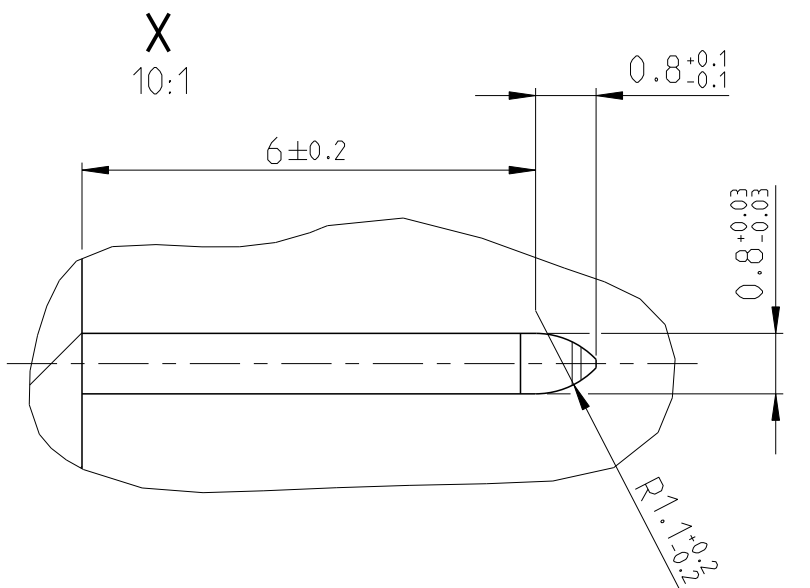
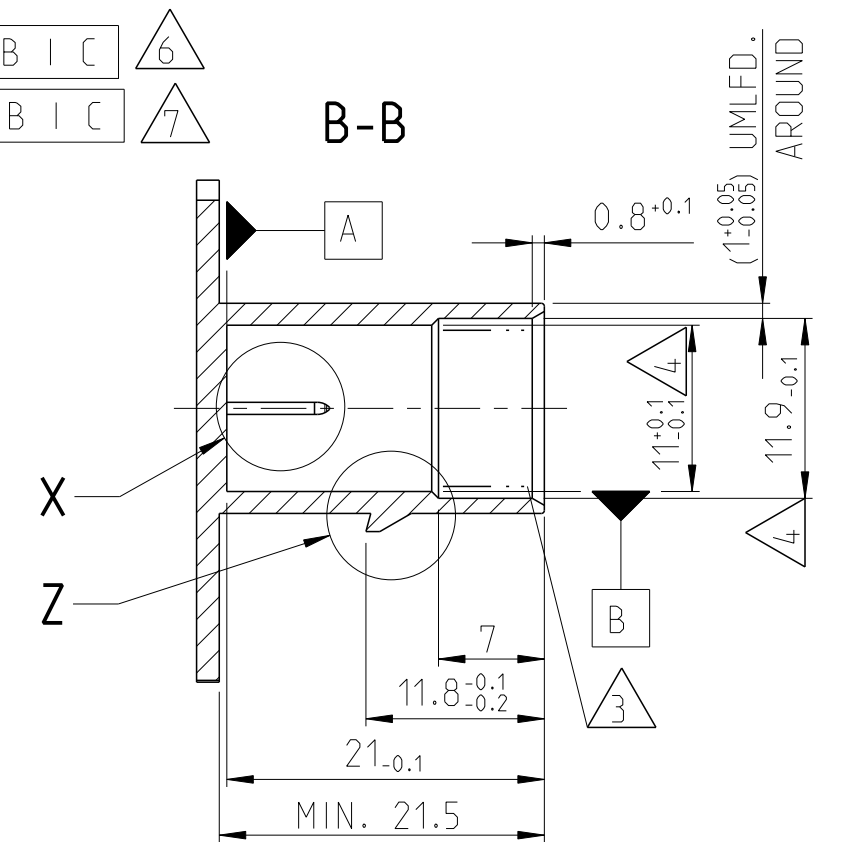
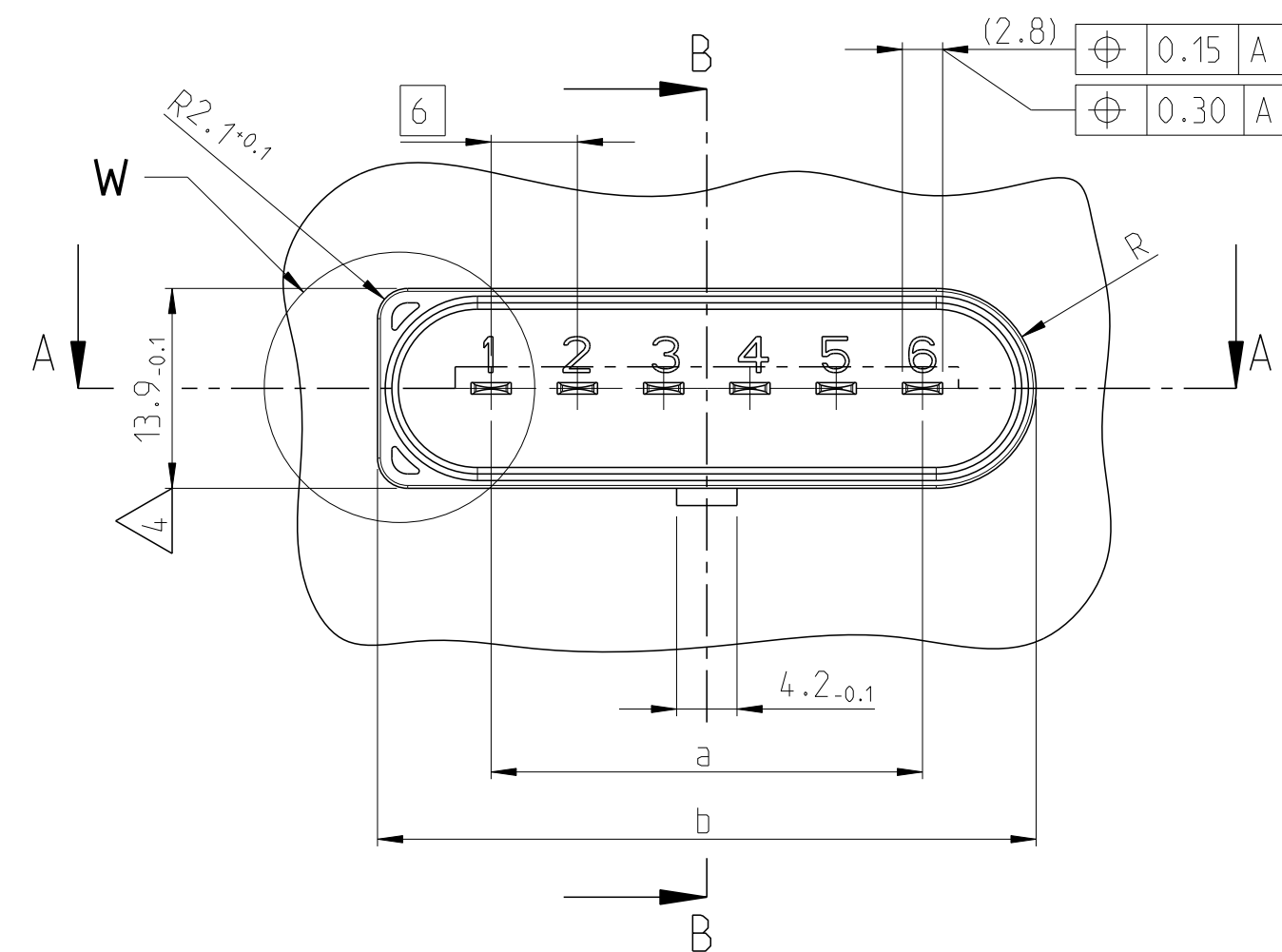


THIS DRAWING IS UNPUBLISHED
 VERTRÄULICHE UNVERÖFFENTLICHTE ZEICHNUNG
 © COPYRIGHT 2009 Tyco Electronics AMP GmbH

RELEASED FOR PUBLICATION
 FREI FÜR VERÖFFENTLICHUNG
 2009
 ALL RIGHTS RESERVED.
 ALLE INTERNATIONALEN RECHTE VORBEHALTEN.

MATED WITH:
 PASSEND ZU:

LOC	DIST	REVISIONS					
		P	LTR	DESCRIPTION	DATE	DWN	APVD
A1	-			NEW DRAWING	12MAR2010	TS	Thiel
		A1		RADIUS	01APR2010	K.G	Thiel
		A2		TE LOGO	20MAY2011	K.G	Thiel
		A3		6 ± 0.2 WITH REFERENCE CORRECTED	08FEB2013	RBT	Thiel



NOTES

- 1 CONTACT CAVITY NUMBER: CHARACTERS ACC. TO DIN 1451-H2, RECEDE 0.2
- 2 NOT SPECIFIED RADIUS R0.2
- 3 SEALING AREA AROUND: NO BURRS, NO MOLD SEPARATING LINE, NO INJECTION POINT PERMITTED; Ra ≤ 0.003 FOR MOLD SURFACE
- 4 ALLOWED WARPAGE -0.2, MEASUREMENT LEVEL 3/4
ALLOWED WARPAGE -0.3, MEASUREMENT LEVEL 1
- 5 ALLOWED WARPAGE -0.1, MEASUREMENT LEVEL 3/4
ALLOWED WARPAGE -0.2, MEASUREMENT LEVEL 1
- 6 MEASUREMENT LEVEL 1
- 7 MEASUREMENT LEVEL 2
- 8 MEASUREMENT LEVEL 3
- 9 MEASUREMENT LEVEL 4

BEMERKUNGEN

- 1 KONTAKTKAMMERNUMMER: SCHRIFT NACH DIN 1451-H2, VERTIEFT 0.2
- 2 UNBEMASSTE RADIIEN R0.2
- 3 DICHTFLÄCHE UMLAUEND: KEIN GRAT, KEINE WERKZEUGTRENUNG, KEIN ANSPRITZPUNKT ZULAESSIG Ra ≤ 0.003 AM WERKZEUG
- 4 ZULAESSIGER VERZUG -0.2, MESSEBENE 3/4
ZULAESSIGER VERZUG -0.3, MESSEBENE 1
- 5 ZULAESSIGER VERZUG -0.1, MESSEBENE 3/4
ZULAESSIGER VERZUG -0.2, MESSEBENE 1
- 6 MESSEBENE 1
- 7 MESSEBENE 2
- 8 MESSEBENE 3
- 9 MESSEBENE 4

d -0.1	13.8	19.8	25.8	31.8	37.8	43.8
c -0.1	12.9	18.9	24.9	30.9	36.9	42.9
b -0.1	15.8	21.8	27.8	33.8	39.8	45.8
a ±0.1	-	6	12	18	24	30
DIMENSION/MASZ	1	2	3	4	5	6
	POSITION/POLZAHL					

THIS DRAWING IS A CONTROLLED DOCUMENT.
 DIESES ZEICHNUNGSDOKUMENT WIRD DURCH AMP INCORPORATED KONTROLLIERT.
 ANDERÄNDERUNGEN, DIE DEM TECHNISCHEN FORTSCHRITT DIENEN, SIND VORBEHALTEN.
 DEN JEWELN LETZTGESETZTEN ÄNDERUNGSSTAND ERFAHREN SIE AUF ANFRAGE.

DIMENSIONS: MASSE IN EINHEITEN: (MM)

TOLERANCES UNLESS OTHERWISE SPECIFIED: ALLGEMEINTOLERANZEN

1 PLC	±DIN 16901-120
2 PLC	±CENTRIC TO
3 PLC	±NOMINAL DIM
4 PLC	±
ANGLES/WINKEL	±°
FINISH/OBERFLÄCHE/FARBE	

MATERIAL: -

DWN: T.Schmoeker 28JAN2010
 CHK: F.Thiel
 APVD: -

PRODUCT SPEC: -
 APPLICATION SPEC: -
 VERARBEITUNGSSPEZ.: -

WEIGHT: -
 GEWICHT: -

CUSTOMER DRAWING: -

TE Connectivity

NAME: TERMINATION, 1-6 POSITION, RADIAL SEAL, 2.8 MM TAB
 ANSCHLUSS, 1-6POLIG, RADIALDICHT.

SIZE: A2
 CAGE CODE: 00779
 DRAWING NO: 114-94051
 ZEICHNUNGS-NR.: 114-94051

RESTRICTED TO NUR FÜR: -

SCALE: 2:1
 MASSSTAB: 2:1

SHEET: 1 OF 1
 BLATT: 1 VON 1

REV: A3