



Dynamic D8000 series panel mount type

Table of contents

| | | |
|---|---|---|
| 1 | INTRODUCTION..... | 2 |
| 2 | SUPPORTING DOCUMENTS | 2 |
| | 2.1 Customer drawings..... | 2 |
| | 2.2 Product specification..... | 2 |
| 3 | DESCRIPTION..... | 2 |
| 4 | REQUIREMENTS..... | 3 |
| | 4.1 Applicable Fixture | 3 |
| | 4.2 Assemble connector to Panel with Screw and Nut..... | 3 |
| | 4.2.1 Panel Dimensions | 3 |
| | 4.2.2 Procedure of assemble..... | 3 |

1 INTRODUCTION

This specification contains the regulations for panel mount process of Dynamic D8000 series.

2 SUPPORTING DOCUMENTS

2.1 Customer drawings

Please refer to customer drawings of Dynamic series.

2.2 Product specification

The product specifications of the used articles are to be taken into account. The product specification describes the technical data as e.g. regulations, approvals, temperature range and rated voltage.

3 DESCRIPTION

This application specification describes the panel mount type of Dynamic D8000 series, as figure 1 shown.

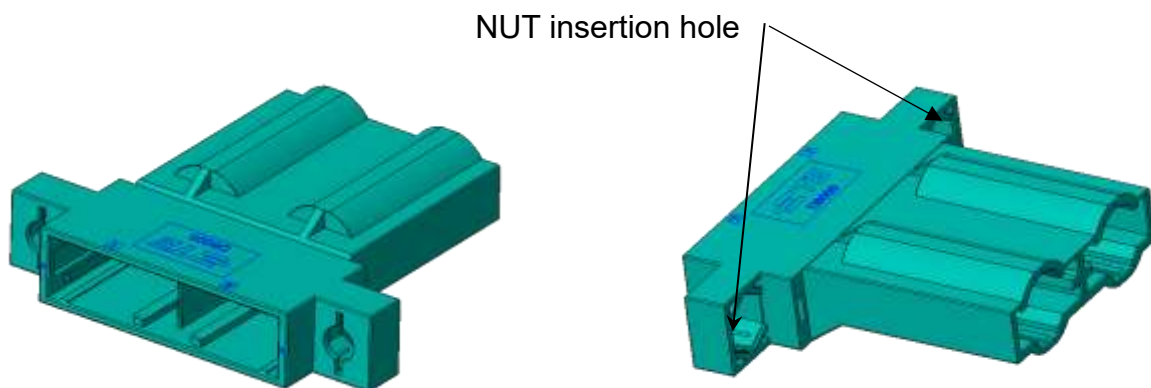


Figure.1

4 REQUIREMENTS

4.1 Applicable Fixture

Please refer to Table.1.

Table:1

| Method | P/N | Description | Assembly process |
|---------------|-------------|------------------------------|------------------|
| Screw and Nut | Screw | Commercial goods M6 Screw | See 4.2. |
| | Hexagon Nut | Commercial goods M6 Nut | |

4.2 Assemble connector to Panel with Screw and Nut

4.2.1 Panel Dimensions

Please refer to the Customer drawing.

4.2.2 Procedure of assemble

- I. Set the NUT at the insertion holes of connector as shown Figure 2.

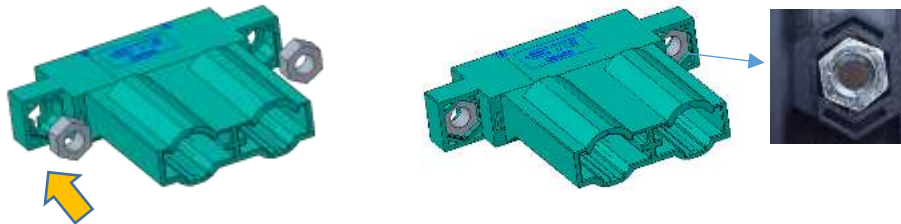


Figure 2

- II. Located connector to the panel on the opposite area of panel as shown Figure 3.

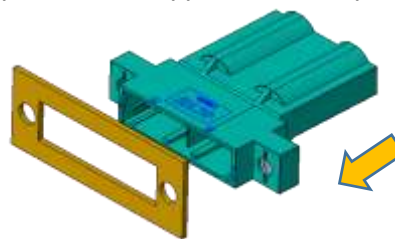


Figure 3

- III. Fasten the screw with Torque 2.6N·m Max. as shown Figure 4.

Torque:2.6N·m Max.



Figure 4