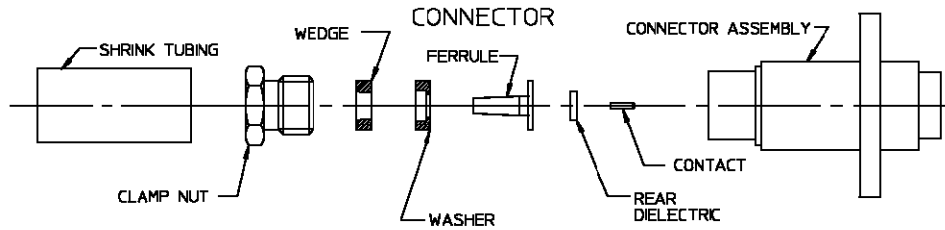
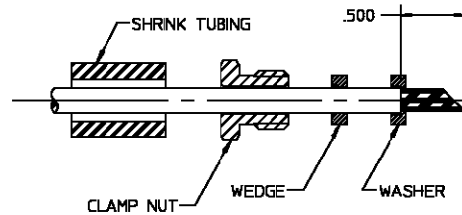


CONNECTOR TYPE	CABLE TYPE	TOOLS REQ'D
"OSSP" FLOATING FLANGE MOUNT CABLE JACK-EMLOCK ATTACHMENT	RG-178/U	2098-5635-54 (T-15)

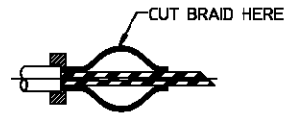


### ASSEMBLY OPERATIONS

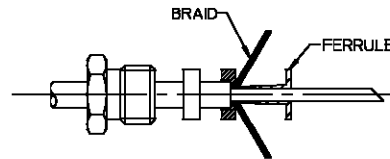
- STEP 1:**  
 A.) CUT CABLE OUTER JACKET TO DIMENSION SHOWN, 45° ANGLE.  
 B.) PLACE SHRINK TUBING OVER CABLE.  
 C.) PLACE NUT (HEX FIRST) AND WEDGE (SMALL OPENING FIRST OVER JACKET AND WASHER (LARGE OPENING FIRST), SNUG UP TO OUTER FACE OF JACKET.



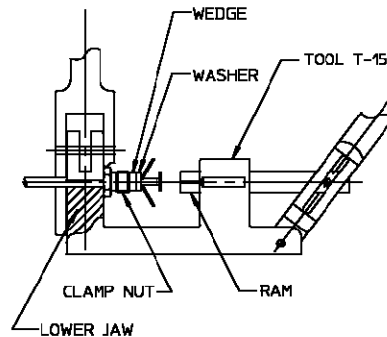
- STEP 2:**  
 PUSH BACK BRAID TO EXPAND AND FACILITATE CUTTING. CUT BRAID WITH SMALL POINTED SCISSORS AT POINT OF WIDEST EXPANSION.



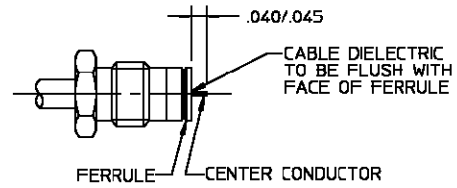
- STEP 3:**  
 FLARE OUT REMAINING BRAID AND INSTALL FERRULE (TAPERED END FIRST) AS FAR AS IT CAN GO WITHOUT FORCING.



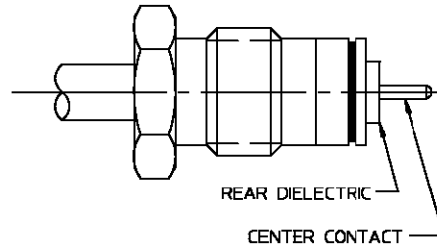
- STEP 4:**  
 A.) PLACE CABLE IN LOWER JAW OF T-15 TOOL AND SEAT BACK OF NUT AGAINST THE SIDE OF JAWS. THEN LOCK THE JAWS.  
 B.) PUSH THE RAM HOME FIRMLY. (CAUTION: BE SURE DIELECTRIC GUIDES INTO HOLE IN THE FACE OF THE RAM.)



- STEP 5:  
A.) REMOVE SUB-ASSEMBLY FROM T-15 TOOL AND TRIM BRAID AS CLOSE AS POSSIBLE WITH SCISSORS.  
B.) CUT CABLE DIELECTRIC AND CENTER CONDUCTOR TO DIMENSION SHOWN AND TIN CENTER CONDUCTOR.



- STEP 6:  
ASSEMBLE REAR DIELECTRIC AND SOLDER THE CONTACT TO CENTER CONDUCTOR.



- STEP 7:  
SEAT NUT IN BODY; TORQUE TO 125 IN-OZ. SLIDE SHRINK TUBING OVER CLAMP NUT AND HEAT SHRINK TUBING AS SHOWN.

