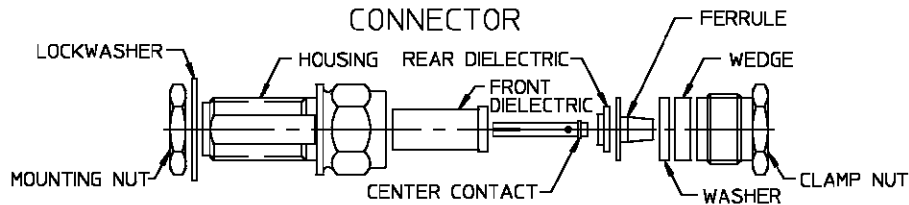


CONNECTOR TYPE	CABLE TYPE	TOOLS REQ'D:
OSM BULKHEAD FEEDTHROUGH CABLE JACK CLAMP ATTACHMENT	RG-188/U RD-316/U	CENTER CONTACT HOLDER: 2098-5221-10 (T-4578)

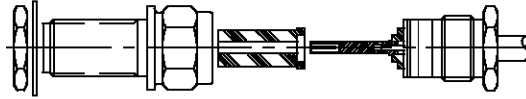


### ASSEMBLY OPERATIONS

<p><b>Step 1</b></p> <p>(a) Cut cable outer jacket to dimension shown, 45° angle.</p> <p>(b) Place nut (hex first) and wedge (small opening first over jacket) and washer.</p>	
<p><b>Step 2</b></p> <p>(a) Push back braid to expand and facilitate cutting. Cut braid with small pointed scissors at point of widest expansion.</p>	
<p><b>Step 3</b></p> <p>(a) Cut slits in outer jacket, .062 long 3 places approx. 120 deg. apart, to facilitate installation of ferrule (optional).</p> <p>(b) Flare out remaining braid, and install ferrule (tapered end first) and seat firmly.</p>	
<p><b>Step 4</b></p> <p>(a) Slide washer, wedge and clamp nut toward ferrule, such as to clamp braid between the ferrule and washer.</p> <p>(b) Trim braid as close as possible with a small pair of scissors or flush cut wire cutter.</p>	
<p><b>Step 5</b></p> <p>(a) Cut cable dielectric flush with ferrule.</p> <p>(b) Cut cable inner conductor to dimension shown.</p>	
<p><b>Step 6</b></p> <p>(a) Slide rear dielectric over cable inner conductor.</p>	
<p><b>Step 7</b></p> <p>(a) Place center contact in holder, heat center contact and push it over cable inner conductor and into rear dielectric firmly.</p> <p>(b) Remove excess solder.</p>	

**Step 8**

- (a) Assemble front dielectric onto center contact.
- (b) Engage threads of clamp assembly to housing and torque to 15-18 in lbs.
- (c) Assembly is now complete.

**Step 9**

- (a) Adherence to steps given will yield tolerances shown.

