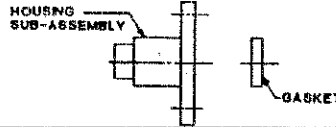


CONNECTOR TYPE	CABLE TYPE	TOOLS REQUIRED:
FLANGE MOUNT CABLE JACK SOLDER ATTACHMENT	.085 SEMI-RIGID COAXIAL CABLE	FIXTURE BASE: 2098-5208-54(T-4567) LOCATOR TOOL: 2098-5210-02(T-4568) CLAMP INSERTS: 2098-5208-54(T-4700-2)

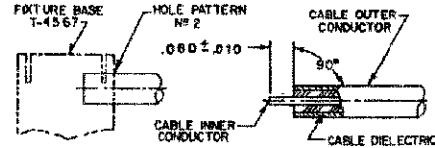
CONNECTOR



ASSEMBLY OPERATIONS

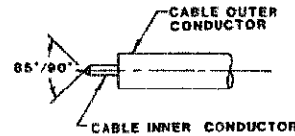
1.0 PREPARATION OF CABLE

- 1.1 INSERT SQUARED CABLE END INTO FIXTURE BASE HOLE PATTERN #2.
- 1.2 PLACE SAW IN SAW SLOT AND CUT THROUGH OUTER CONDUCTOR AND INTO DIELECTRIC WHILE ROTATING CABLE.
- 1.3 REMOVE CABLE FROM FIXTURE AND FINISH CUTTING DIELECTRIC WITH CUTTING BLADE.
- 1.4 BARE INNER CONDUCTOR BY PRYING CUT OUTER CONDUCTOR AND DIELECTRIC FROM CABLE.
- 1.5 COMPLETE TRIMMING OF CABLE INNER CONDUCTOR TO DIMENSION SHOWN.



2.0 SHAPE INNER CONDUCTOR OF CABLE

- 2.1 FILE BLUNT END OF INNER CONDUCTOR TO AN 85°-90° CONE.



3.0 SOLDERING OF CABLE TO HOUSING SUB-ASSEMBLY

- 3.1 CAREFULLY INSERT CABLE INNER CONDUCTOR INTO PRE-ASSEMBLED CENTER CONTACT OF HOUSING SUB-ASSEMBLY AND SEAT CABLE FIRMLY.
 - 3.2 PLACE LOOSE ASSEMBLY IN FIXTURE BASE AS SHOWN.
 - 3.2.1 TIGHTEN CLAMP SCREW TO SECURE CABLE.
 - 3.2.2 TIGHTEN LOCATOR TOOL TO SEAT CABLE FIRMLY AGAINST HOUSING.
 - 3.3 SOLDER CABLE TO HOUSING SUB-ASSEMBLY AS SHOWN.
- NOTE: FIXTURE SHOULD BE CLAMPED VERTICALLY IN VISE.

