



AMP LOCKING SPRING ASSEMBLY  
FOR SERIES "M"  
AND MINIATURE DUALATCH\* CONNECTORS

<b>IS 7067</b>	
RELEASED	12-20-63
REVISED	

CONNECTOR PRODUCTS  
DIVISION

1. The Locking Spring Assemblies covered by this Instruction Sheet are used to lock mated Connector Blocks together. See Figure 1 for Locking Spring and Connector Block selection.

NOTE: Use two Locking Springs and two Spring Catches for each Connector. See Figure 2. Springs or Spring Catches may be used on either Male or Female Connector Blocks.

2. Attach Locking Spring Assembly (See Figure 2) to Connector Block using a combination of Hardware as shown in Figure 3.

NOTE: When attaching Assembly to Miniature Dualatch Blocks, make sure there is as much

clearance as possible between Spring Catch or Spring and Block. See Figure 4

PART NO.	DESCRIPTION	USED ON
201919-□ or 201925-□	Locking Spring	34 & 50 Position Series "M" Connectors 40 & 60 Circuit Miniature Dualatch Connectors
201920-□ or 201926-□	Spring Catch	34 & 50 Position Series "M" Connectors 40 & 60 Circuit Miniature Dualatch Connectors

Fig. 1

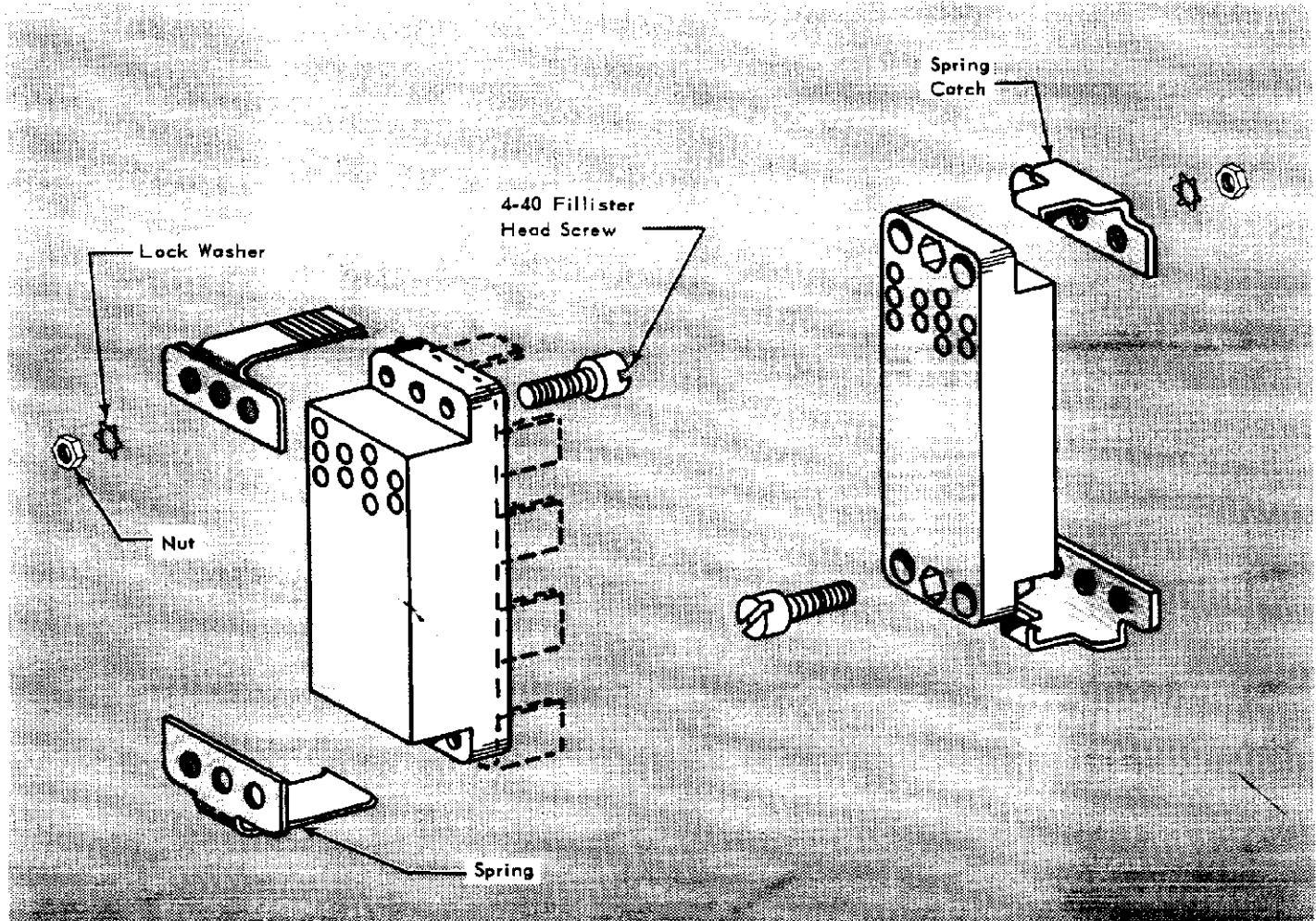


Fig. 2

© Copyright 1963 by AMP Incorporated. All international rights reserved. AMP (TM) U. S. A. and foreign. AMP (TM) products covered by U. S. and foreign patents and/or patents pending.

CONNECTOR	HARDWARE COMBINATION		IS NO.
	MALE BLOCK	FEMALE BLOCK	
Series "M"	1. Center Guide Pins, Sockets & 4 Screws	1. Center Guide Pins, Sockets & 4 Screws	7054
	2. Corner Guide Pins and Sockets	2. Corner Guide Pins and Sockets	7055
Miniature Dualatch	1. Long Center Guide Pins & 4 Screws	1. 4 Screws in Corner Holes.	7119
	2. Center Guide Pins, Sockets & 4 Screws	2. Center Guide Pins, Sockets and 4 Screws	7054
	3. Corner Guide Pins and Sockets	3. Corner Guide Pins and Sockets	7055

Fig. 3

3. ASSEMBLY PROCEDURE

- (a) Position Connector Blocks as shown in Figure 5.
- (b) Push Connector Blocks together until end of Spring Catch engages Serrations on Spring. See Figure 5.

NOTE: Slight pressure on Springs may be required to engage Spring Catch.

- (c) Keep pushing Connector Blocks together until they are tightly mated.

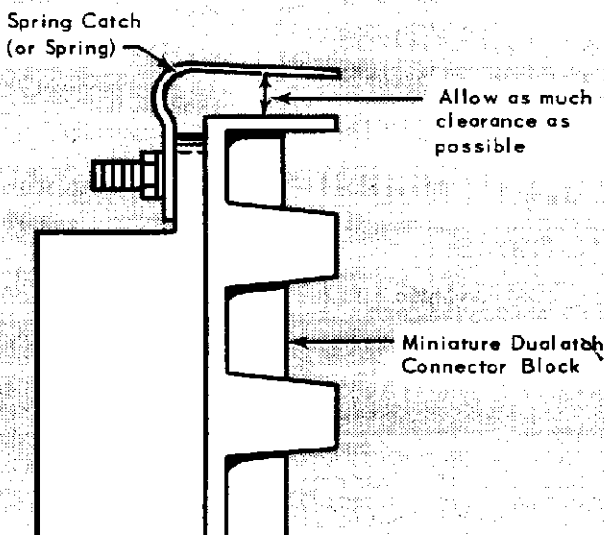


Fig. 4

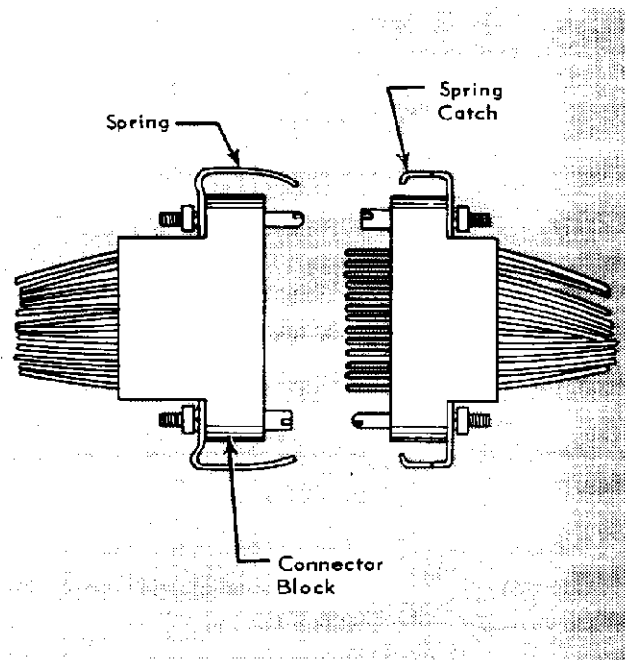


Fig. 5

4. To dis-assemble Connector Blocks:

- (a) Apply pressure on Springs as shown in Figure 6.
- (b) When Spring is free of Catch, pull Blocks apart.

Apply Pressure on Springs to Separate Connectors

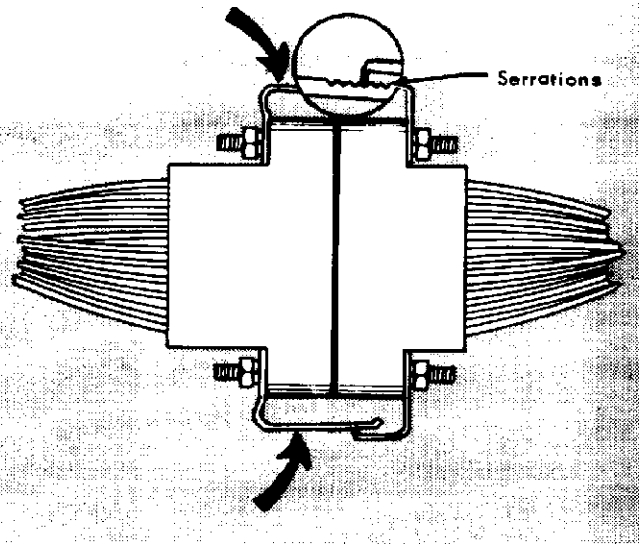


Fig. 6