

# AMP

AMP INCORPORATED  
HARRISBURG, PA 17105

REDUCED FOR PACKAGING

## IS 7103

CUSTOMER HOTLINE  
1 800 722-1111

### AMP\* PIN HOOD-MOUNTING BRACKET ASSEMBLY FOR 41 POSITION SERIES "M" CONNECTORS

RELEASED  
12-12-89

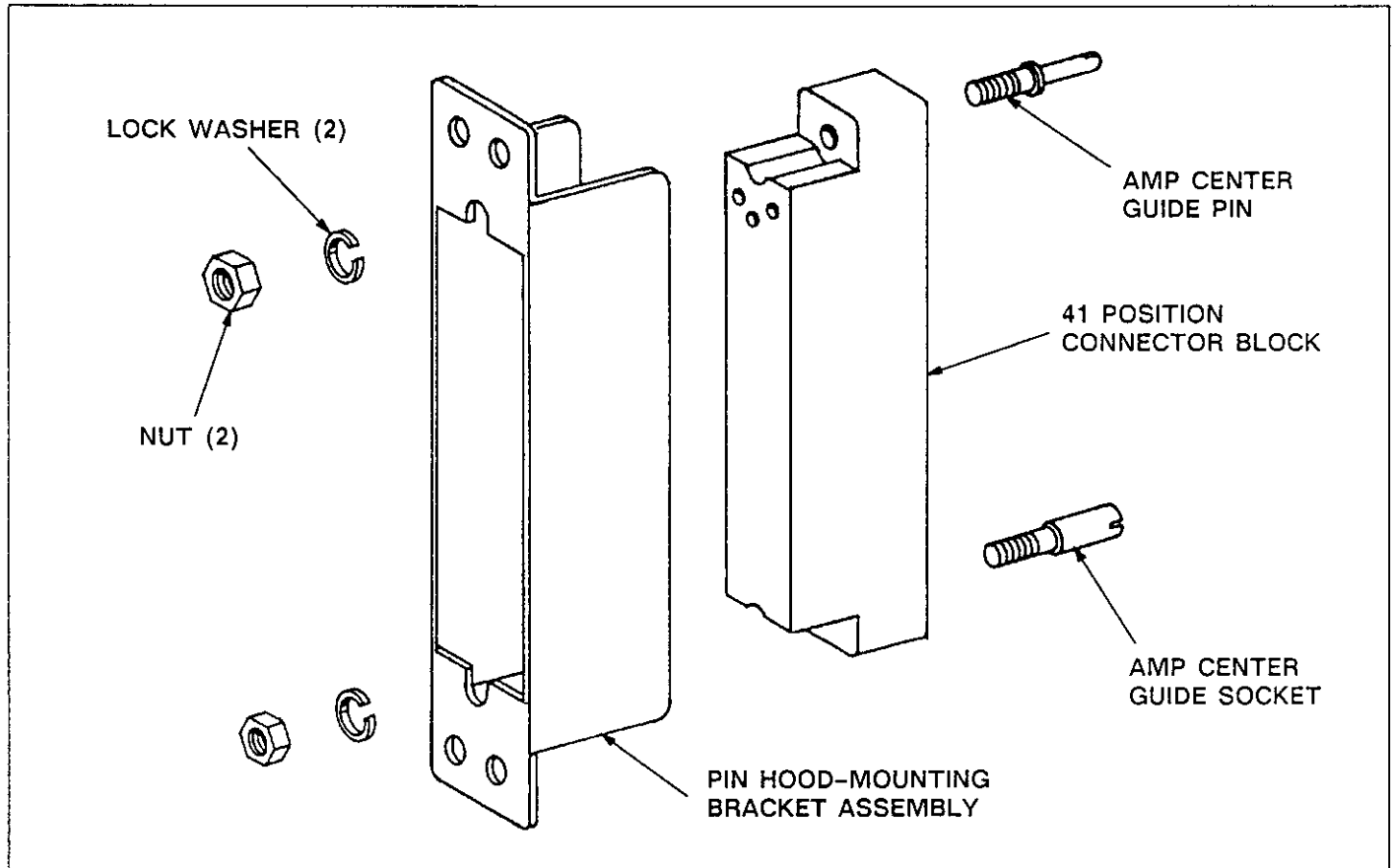


Fig. 1

### ASSEMBLY INSTRUCTIONS

1. Attach Pin Hood-Mounting Bracket Assembly to Connector Block using:
  - (a) AMP Center Guide Pins. See Figure 1.
  - (b) Two 4-40 x 1/4" Fillister Head Screws with Lock Washers and Nuts. See Figure 1.
2. Mount Assembly to Panel using four 4-40 x 3/8" Screws with Nuts and Lock Washers. See Figure 2.
3. For Panel Cutout Dimensions, see Figure 3.

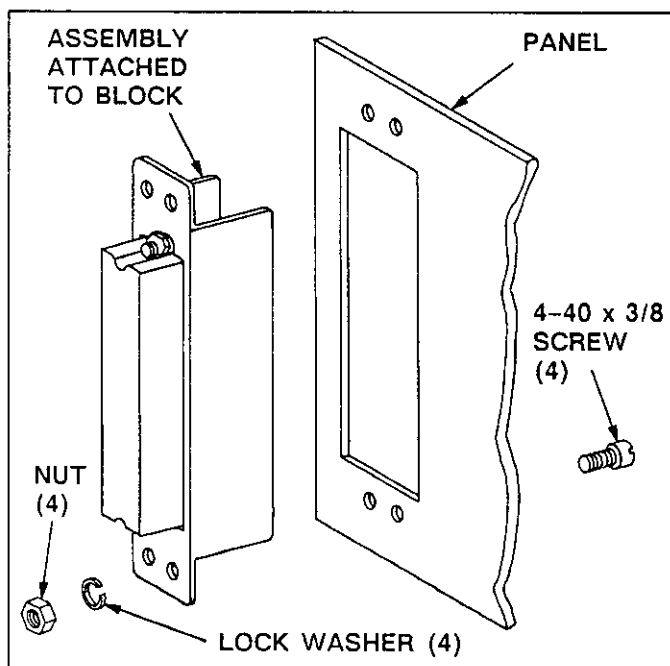


Fig. 2

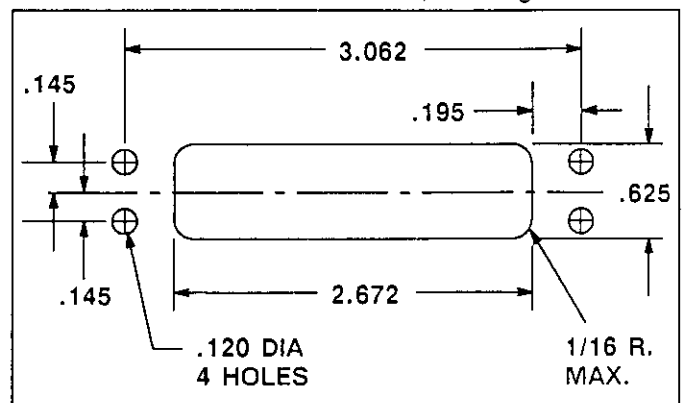


Fig. 3