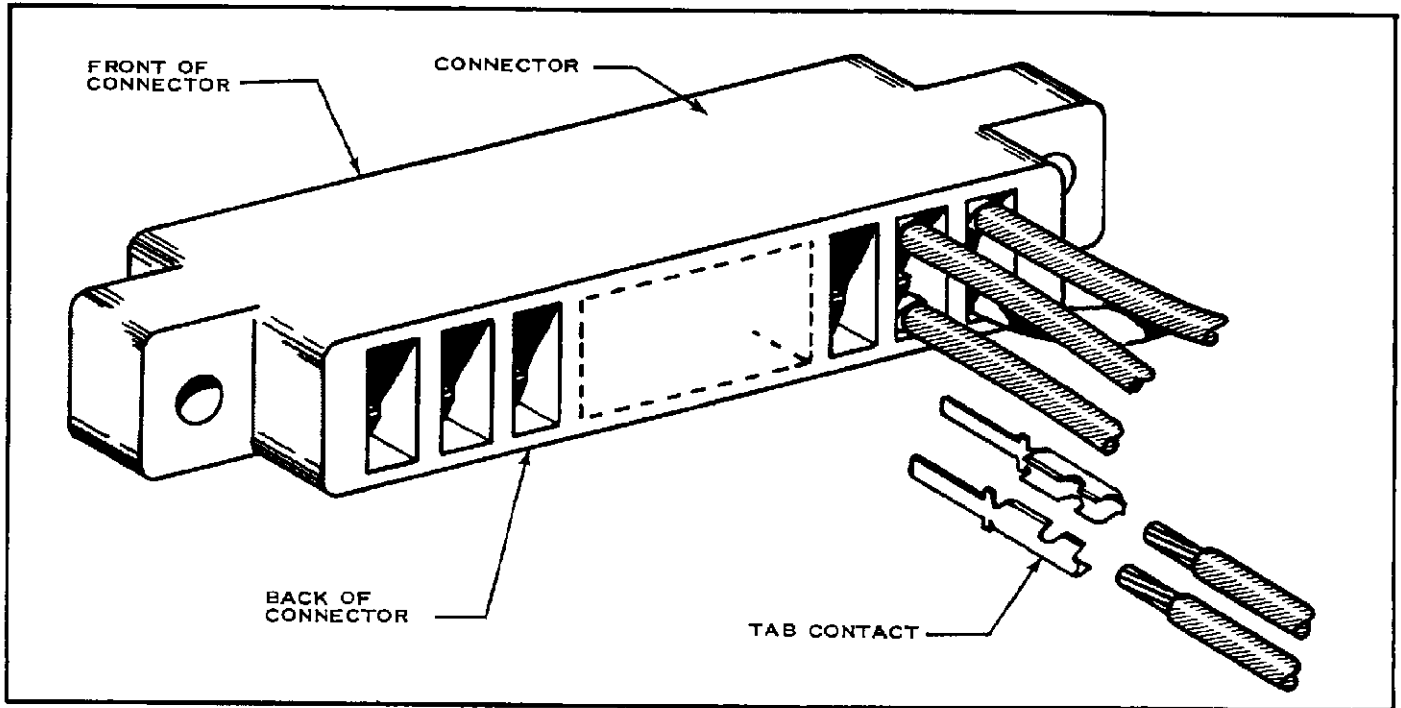


CONNECTOR PRODUCTS DIVISION



\*Trademark of AMP Incorporated

FIG. 1

1. These instructions cover AMP-TAB Dual Connector Assemblies. See Figure 1. Each Assembly consists of a Connector and Tab Terminal. The Connector contains pre-assembled Receptacle Contacts. Read these instructions carefully before using these assemblies.

## 2. TAB TERMINAL SELECTION & CRIMPING

Tab Terminals are available in Continuous Strips or in Loose-Piece (LP) form.

(a) Select the proper Tab Terminal for your application from Figure 2.

(b) Crimp Strip Terminals using the proper A-MP\* Auto-Machine Applicator. Refer to the AMP Instruction Manual which is shipped with the applicator.

(c) Crimp Loose-Piece (LP) Terminals using the A-MP Hand Tools listed in Figure 2. The AMP Instruction Sheet packaged with each Tool will explain the use of the Tool.

## 3. TAB TERMINAL INSERTION

Insert Crimped Terminals into Back of Connector as shown in Figure 4.

(a) Push Terminal into Back of Connector as far as it will go. Two Tab Terminals may be used for each Receptacle Contacts.

(b) Pull back lightly on Wire to make sure Terminal is latched in place.

(c) For Terminals crimped to small, flexible Wire, it may be necessary to use A-MP Insertion Tool No. 91002.

NOTE: Back of Connector is the Wire-Insertion side. Front of Connector is the Card-Insertion side.

WIRE RANGE	INSULATION DIAMETER	TAB TERMINAL NUMBER		A-MP CRIMPING TOOL NUMBER
		STRIP	LOOSE PIECE	
26-22	.035-.054	66143-□	66168-□ (66143-□LP)	90090-□
22-20	.046-.062	66144-□	66169-□ (66144-□LP)	90174-□
22-18	.054-.074	66144-□	66169-□ (66144-□LP)†	90090-□

† WHEN CRIMPED IN HAND TOOL NO. 90090-□, THIS TERMINAL MAY NOT BE USED IN CONNECTORS WITH .100" CONTACT SPACING.

FIG. 2

## 4. KEYING PLUGS

There are two types of Keying Plugs for use in AMP-TAB Connectors.

(a) Use Inter-Contact Keying Plug No. 582501 for Connectors with .125" - and .156" - Contact Spacing. This Plug can be used only between Contact Positions.

(b) Use On-Contact Keying Plug No. 582507 for all Connectors. This Plug can be used only at Contact positions.

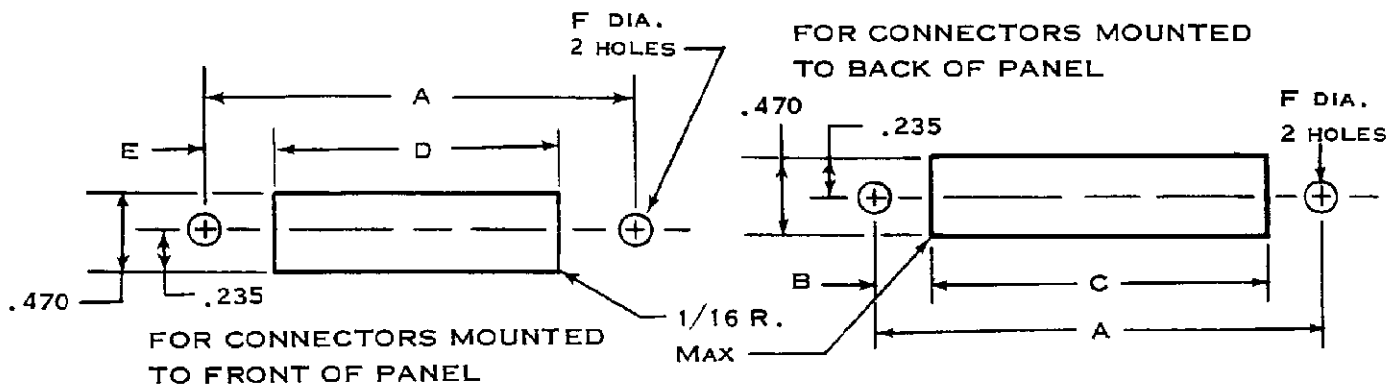
(c) Refer to the AMP Instruction Sheets packaged with the Keying Plugs for proper insertion procedure.

## 5. TAB EXTRACTION

To remove Tab Terminals from Connector, use A-MP Extraction Tool No. 91011-1. Refer to the instructions packaged with the Tool for the proper extraction procedure.

## 6. PANEL MOUNTING

The dimensions in Figure 6 may be used to make panel cutouts for mounting AMP-TAB Connectors.



NOTE: DIMENSIONS UNDER "F" IN TABLE ARE FOR CONNECTORS WHOSE NUMBERS END IN -1 OR -2. IF DASH NUMBER IS OTHER THAN -1 OR -2, PLEASE REFER TO THE PROPER AMP CUSTOMER DRAWING FOR THESE DIMENSIONS.

CIRCUIT SPACING	NO. OF CIRCUITS	CONN. NUMBER	A	B	C	D	E	F	
								-1	-2
.100	10	582551-□	1.700	.184	1.332	1.152	.274	.156	.128
		582663-□							
	15	582553-□	2.200	.184	1.832	1.652	.274	.156	.128
		582665-□							
	18	582555-□	2.500	.184	2.132	1.952	.274	.156	.128
		582667-□							
	22	582557-□	2.900	.184	2.532	2.352	.274	.156	.128
		582669-□							
	31	582559-□	3.800	.184	3.432	3.252	.274	.156	.128
		582671-□							
	43	582561-□	5.000	.184	4.632	4.452	.274	.156	.128
		582673-□							
.125	10	582563-□	1.791	.134	1.523	1.392	.199	.128	.150
		582675-□							
	15	582565-□	2.416	.134	2.148	2.017	.199	.128	.150
		582677-□							
	18	582567-□	2.791	.134	2.523	2.392	.199	.128	.150
		582679-□							
	22	582569-□	3.291	.134	3.023	2.892	.199	.128	.150
		582681-□							
	31	582509-□	4.250	.109	4.032	3.994	.128	.128	.150
		582683-□							
	41	582512-□	5.609	.164	5.281	5.243	.183	.128	.150
		582685-□							
43	582571-□	5.916	.134	5.648	5.517	.199	.128	.150	
	582687-□								
.156	10	582573-□	2.158	.120	1.920	1.648	.255	.128	.150
		582689-□							
	15	582575-□	2.938	.120	2.700	2.428	.255	.128	.150
		582691-□							
	18	582577-□	3.406	.120	3.168	2.896	.255	.128	.150
		582693-□							
	22	582508-□	4.030	.120	3.791	3.520	.255	.128	.150
		582695-□							
	30	582791-□	5.278	.120	5.040	4.768	.255	.128	.150
		582795-□							
	31	582579-□	5.434	.120	5.196	4.924	.255	.128	.150
		582697-□							
43	582581-□	7.306	.120	7.068	6.791	.255	.128	.150	
	582699-□								

FIG. 3