



---

## Dynamic series panel mount type

### Table of contents

1	INTRODUCTION .....	2
2	SUPPORTING DOCUMENTS .....	2
2.1	Customer drawings .....	2
2.2	Product specification .....	2
3	DESCRIPTION .....	2
4	REQUIREMENTS.....	3
4.1	Applicable Fixture.....	3
4.2	Assemble connector to Panel with Screw and Nut.....	4
4.2.1	Panel Dimensions .....	4
4.2.2	Procedure of assemble .....	4
4.3	Assemble connector to Panel with PUSH RIVET .....	5
4.3.1	Panel Dimensions .....	5
4.3.2	Procedure of assemble .....	5

## 1 INTRODUCTION

This specification contains the regulations for panel mount process of Dynamic series.

## 2 SUPPORTING DOCUMENTS

### 2.1 Customer drawings

Please refer to customer drawings of Dynamic series.

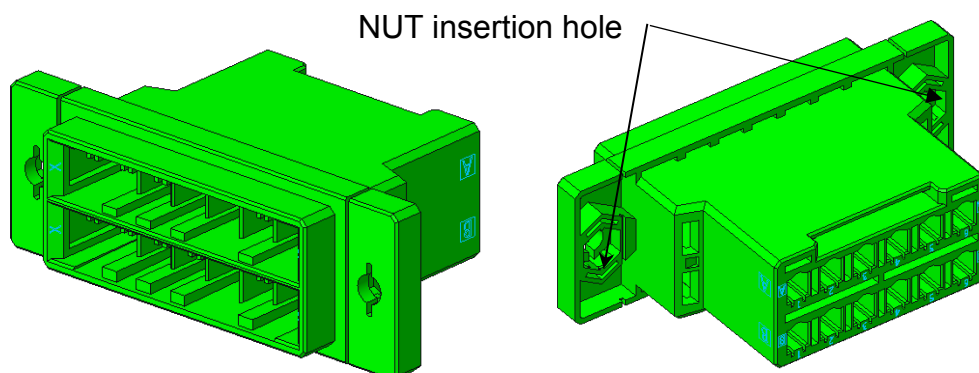
### 2.2 Product specification

The product specifications of the used articles are to be taken into account. The product specification describes the technical data as e.g. regulations, approvals, temperature range and rated voltage.

## 3 DESCRIPTION

This application specification describes the panel mount type of Dynamic series.

The listed terms are used in the specification as shown Dynamic D3200 as example in figure 1.



**Figure: 1**



## 4 REQUIREMENTS

### 4.1 Applicable Fixture

Please refer to Table.1.

Table:1

Method	P/N	Description	Assembly process
Screw and Nut	Screw	Commercial goods M3 Screw	See 4.2.
	Hexagon Nut	Commercial goods M3 Nut	
PUSH RIVET	900128-1	Panel Thickness 0.3~1.3 Retention force 127.4N Min (Two push rivets required)	See 4.3.
	900128-2	Panel Thickness 1.3~2.3 Retention force 127.4N Min (Two push rivets required)	
	900128-3	Panel Thickness 2.8~3.8 Retention force 127.4N Min (Two push rivets required)	

## 4.2 Assemble connector to Panel with Screw and Nut

### 4.2.1 Panel Dimensions

Please refer to the Customer drawing.

### 4.2.2 Procedure of assemble

- I. Set the NUT at the insertion holes of connector as shown Figure 2.

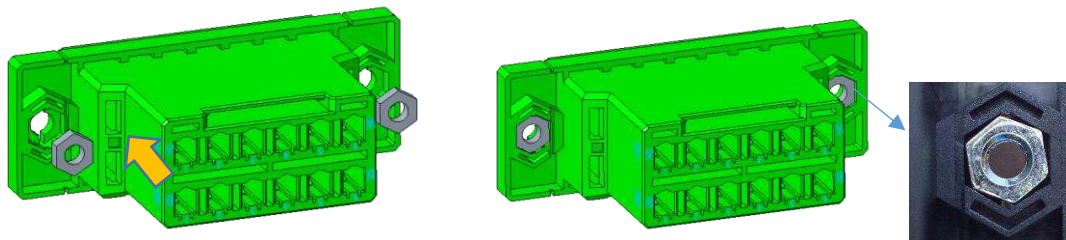


Figure 2

- II. Set to the panel from opposite area of the NUT as shown Figure 3.

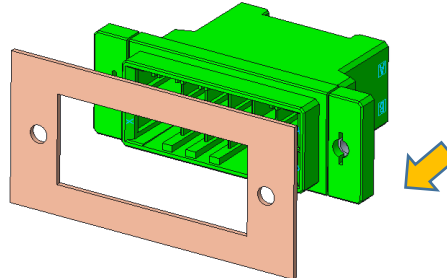


Figure 3

- III. Fasten the screw with Torque 0.315N·m Max. as shown Figure 4.

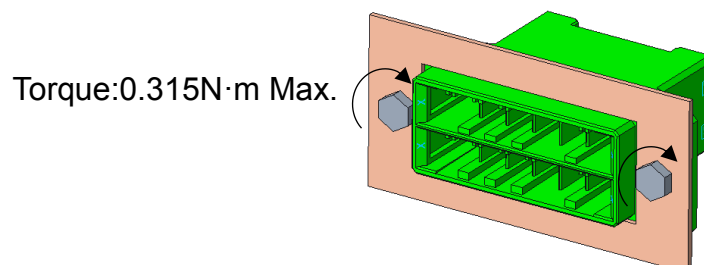


Figure 4

## 4.3 Assemble connector to Panel with PUSH RIVET

### 4.3.1 Panel Dimensions

Please refer to the Customer drawing.

### 4.3.2 Procedure of assemble

After set panel, push the PUSH RIVET as shown Figure 5.

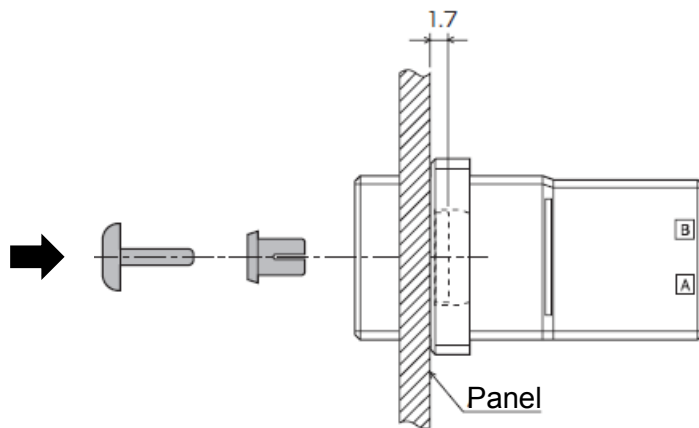


Figure 6