

RECEPTACLE KIT	DESCRIPTION	INSTRUCTION SHEET
1479563-2	SL Series Jack, Unshielded Twisted Pair Category 5e	408-8417
1479564-2	SL Series Jack, Shielded Category 5e	408-8602
1479565-2	SL Series Jack, Unshielded Twisted Pair Category 6	408-8417
1479566-2	SL Series Jack, Shielded Category 6	408-4588
1479599-2	In-Line Coupler, Unshielded Twisted Pair Category 5e	NA
1479600-2	In-Line Coupler, Shielded Category 5e	NA
1933589-2	AMP-TWIST* 6S Jack	411-93007
2111289-2	In-Line Coupler, Unshielded Twisted Pair Category 6	NA
2111299-2	In-Line Coupler, Shielded Category 6	NA

Figure 1

Each kit consists of a receptacle and either an in-line coupler or jack (with strain relief or dust cover). A nut and O-ring is included for installing the receptacle in a panel or faceplate. The SL series jack kit includes a shield. See Figure 1.



NOTE

Dimensions in this instruction sheet are in metric units [with U.S. customary units in brackets]. Figures are not drawn to scale.

Reasons for re-issue of this instruction sheet are provided in Section 2, REVISION SUMMARY.

1. ASSEMBLY

1.1. Wire Preparation and Jack Termination

Prepare the wire and terminate the jack according to the instruction sheet listed in Figure 1.



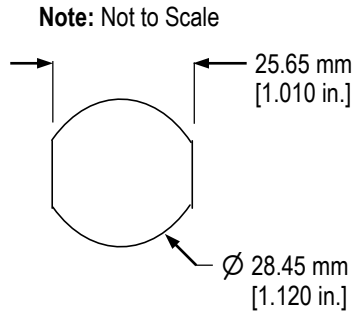
NOTE

The jacks accepts 4-pair, twisted-pair cable having sizes 24 to 22 AWG solid conductors. The SL series jack also accepts cable having sizes 26 to 24 AWG stranded conductors with a maximum conductor insulation diameter of 1.27 mm [.050 in.].

1.2. Panel or Faceplate Cutout

Cut the panel or faceplate according to Figure 2.

Recommended Panel or Faceplate Cutout



Installing Receptacle

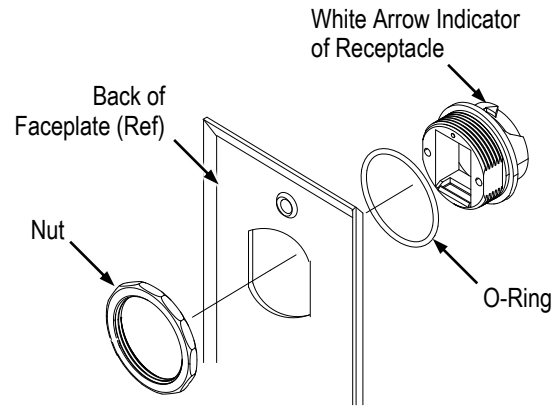


Figure 2

1.3. Installation

1. Slide the O-ring over the threaded portion of the receptacle. See Figure 2.
2. Insert the threaded portion of the receptacle through the front of the panel or faceplate. Orient the receptacle in the cutout so that the white arrow indicator on the front of the receptacle is facing up. See Figure 2.
3. From the back of the panel or faceplate, thread the nut onto the threaded portion of the receptacle. See Figure 2. Tighten the nut to a torque of 2.26 Nm [20 in.-lb].
4. Refer to Figure 3, and insert the jack or coupler into the receptacle as follows:
 - a. From the back of the receptacle, align the fixed latch of the jack or coupler with the white arrow indicator of the receptacle.
 - b. Tilt the back of the jack or coupler up at a slight angle, and slide it into the opening of the receptacle. Hook the fixed latch into the slot inside the receptacle.
 - c. Rotate the back of the jack or coupler down so that the movable latch deflects and locks into the receptacle.

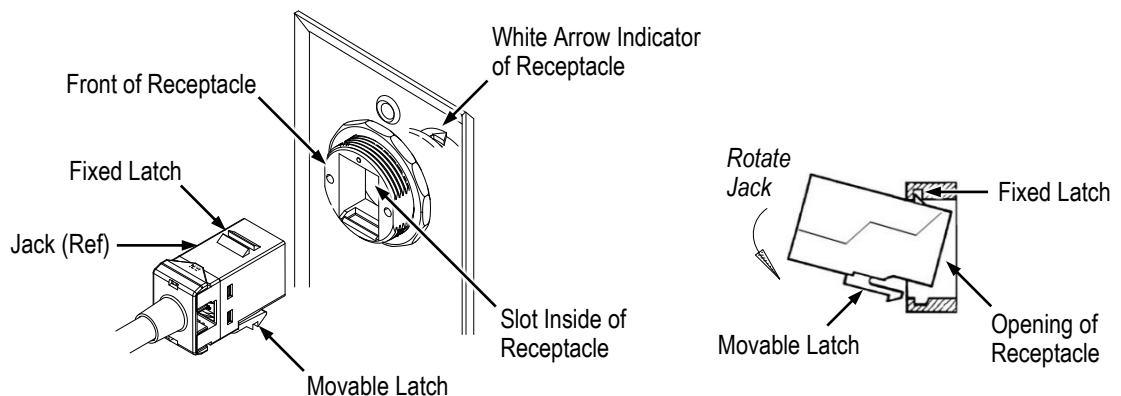


Figure 3

2. REVISION SUMMARY

Revisions to this instruction sheet include:

- Removed toolless jack, and added wire size for SL series jack