

Housing Assy 6 Posn MT2 Rec.

1. SCOPE

1.1 CONTENT

This Instruction Sheet is to provide useful information for correct assembly of the harness and correct assembly / disassembly of the connectors.

TE P/N	TRADE MARK DESCRIPTION
1599620	HOUSING ASS'Y 6 POSN. MT2, RCPT

Table 1

2. PACKAGING OF THE CONNECTOR

Hsg. Ass'y 6 Posn, MT2 Rec. (P/N 1599620) is shown on Figure 1. The connector is supplied with a preassembled Secondary Lock. Connectors have mechanical polarizations to assure the proper mating between male and female housing. The connector is supplied in a carton box in random order.

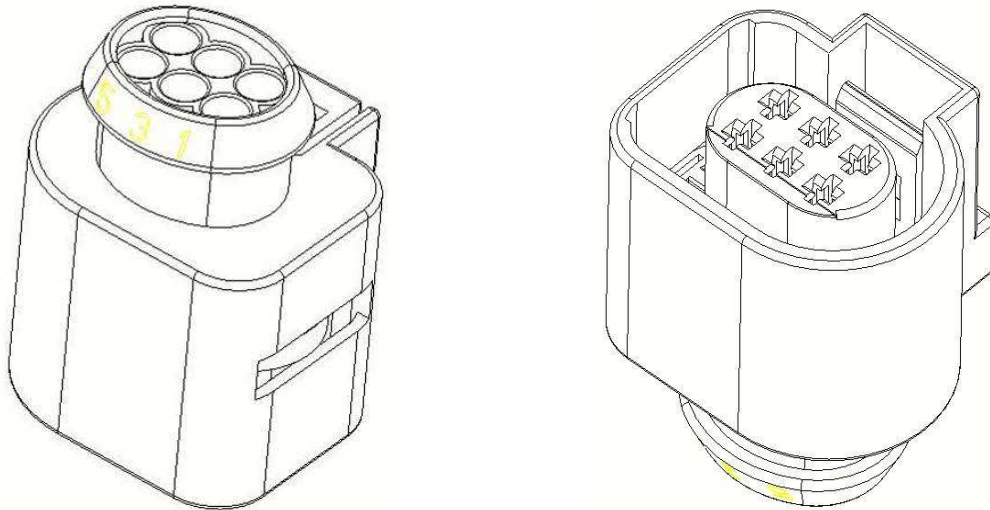


Figure 1
(Hsg. Assy 6p MT2 Rec. – P/N 1599620)

3. CONTACTS AND WIRE SEALS LOADING

Insert the contacts into the housings cavities according to figure 2 until the lance on the metal contacts body is released. On table 2 below are indicated the different contacts used.

TE P/N	TRADE MARK DESCRIPTION	WIRE RANGE (FOR CONTACTS ONLY)
964274	MICRO TIMER 2 RCPT	0,50 - 1,00 mm ²
969005		0,20 - 0,50 mm ²
963530	SINGLE WIRE SEAL	1,40 - 1,90 mm ²
964971		1,20 - 1,60 mm ²

Table 2 – Contacts used on Hsg. Assy 6p MT2 Rec.

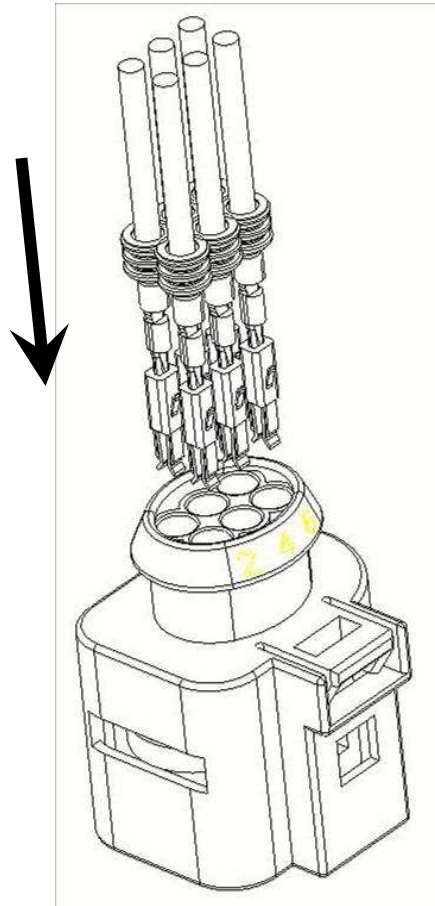


Figure 2 – Insert the contacts into the Housing cavities

4. SECONDARY LOCK CLOSING DEVICE

After the insertion of the contacts into their cavities, close the Secondary Lock, by pushing in the direction shown by the arrows on figure 3 below, into the relevant seats in the female housing until the end position.

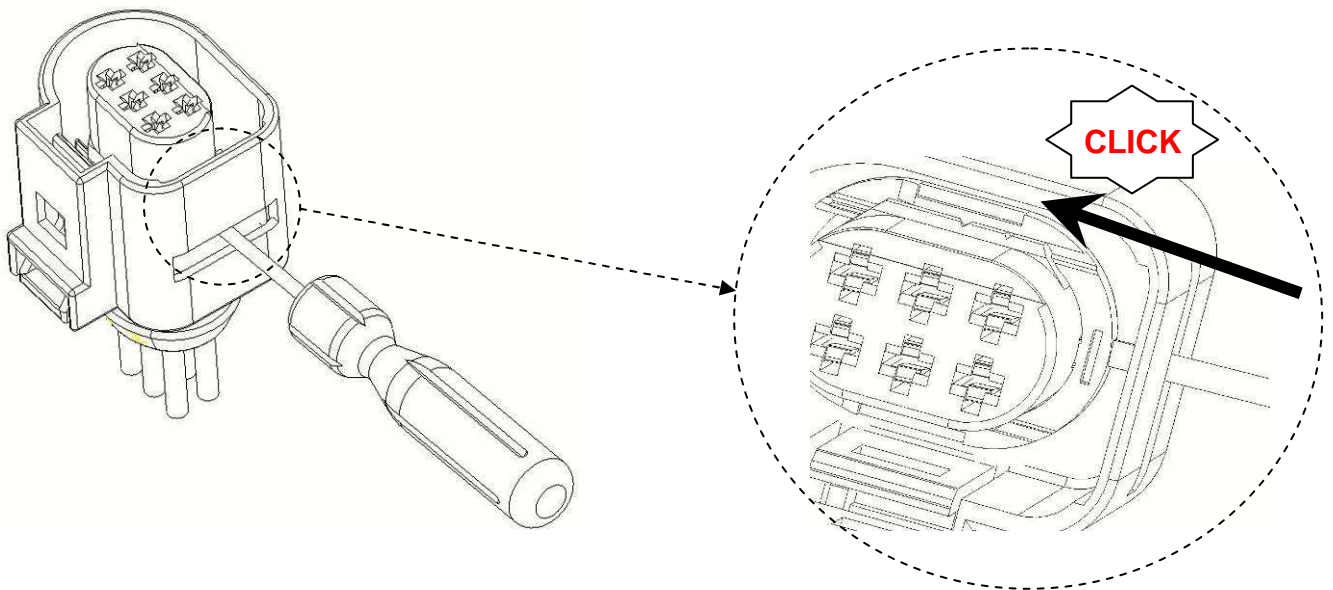
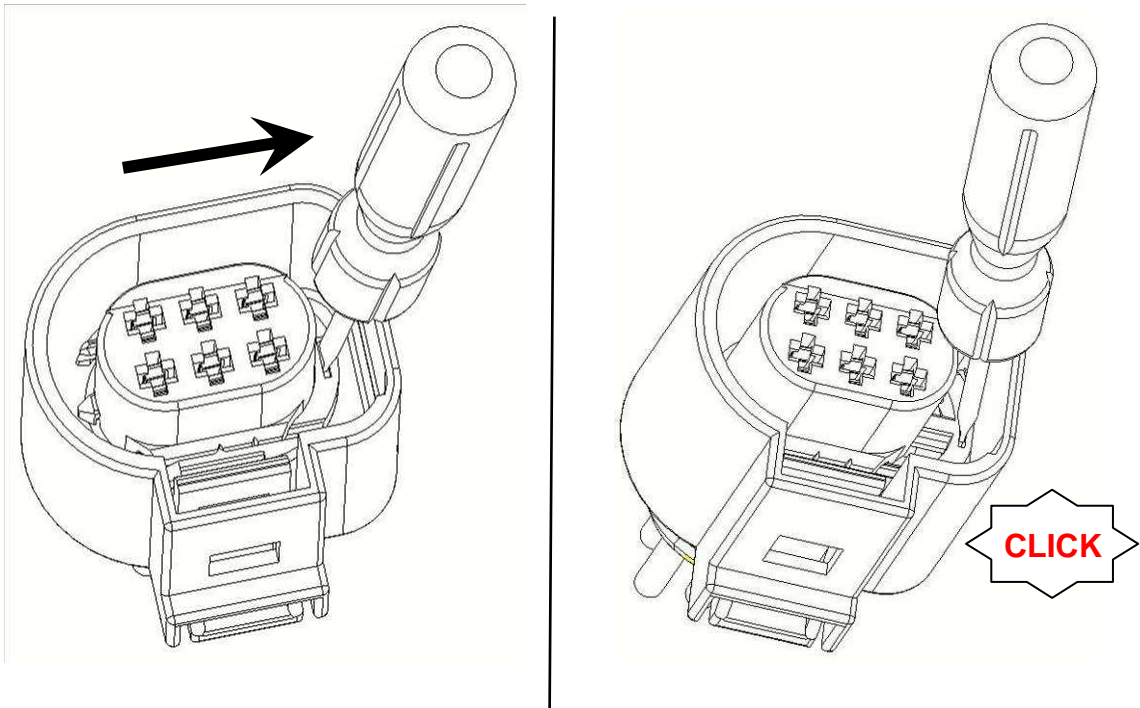


Figure 3 – Hsg. Assy 6p MT2 Rec. – P/N 1599620

5. CONTACTS EXTRACTION

To extract a contact the following steps must be followed:

- 5.1 Remove just to the pre-position for the Secondary Lock in the direction shown by the arrows; see Figure 4 below.



(Figure 4 – P/N 1599620)

- 5.2 Insert the appropriate tool, see figure 5 to the relevant seats of the cavities, and then pull the contacts in the direction shown by the arrows.

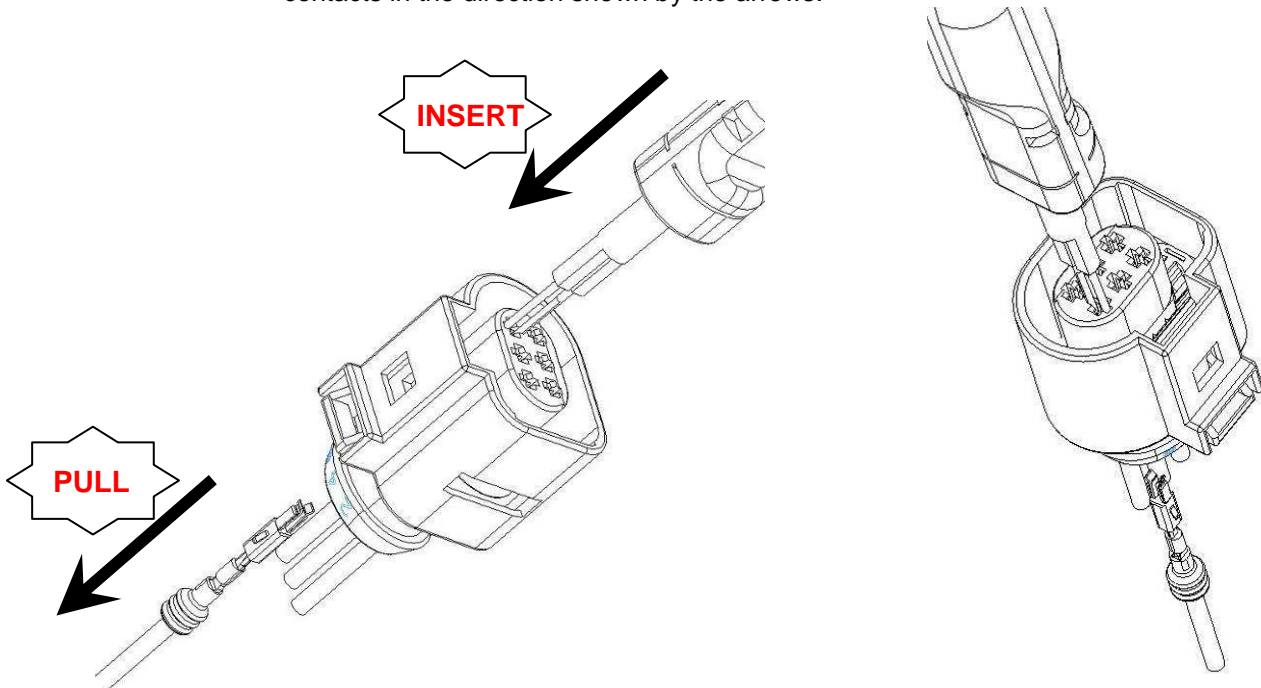


Figure 5

History				
Rev.	Date	Description	Prepared	Approved
A	22-Feb-2010	Released	S. Alves	L. W. Prado
B	01-Apr-2010	Changed item 3 – Table 2	C.Cassali	L. W. Prado