



## DATA CENTER SWITCHING AND ROUTERS

### BANDWIDTH FOR THE NEXT GENERATION

TE Connectivity's (TE) global experience in a wide range of connectivity applications helps our customers "design in" efficiency and agility into data center infrastructure and data center equipment. We have a full set of interconnect and cabling solutions to increase bandwidth, density and reliability for all types of telecommunications and enterprise routing and switching equipment.

We offer products for applications at 10, 25, 40, 100 and up to 400 Gbps to support converged internet protocol (IP) networks. Count on us to provide solutions to support your enterprise's current and future demand for data, speed, and power efficiency.

FIND OUT MORE  
[te.com/switchingandrouters](https://te.com/switchingandrouters)



INPUT/OUTPUT (I/O)

Maximize your density & speed with our pluggable I/O products which support standard interfaces.



**OSFP**  
OSFP integrates thermal management directly into the form factor, eliminating the high thermal resistance between the module and the heat sink.



**QSFP-DD**  
QSFP-DD doubles the density of QSFP and eight differential pairs capable of 50 Gbps each to achieve 400GbE while allowing existing QSFP modules to be plugged into the same cage.



**SFP/SFP+/zSFP+**  
SFP interconnects support data rates up to 56 Gbps. Many cage configurations offered provide excellent shielding options.



**QSFP/QSFP+/zQSFP+**  
The quad small form factor pluggable (QSFP) portfolio

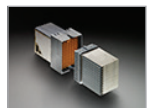
of interconnects offers a large range of simple and customizable design options up to 56 Gbps.



**Mini-SAS HD Connectors**  
Designed to provide next-generation speeds for both internal and external applications.

HIGH SPEED BACKPLANE

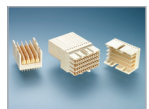
Provide high-speed and scalability for core, edge, Ethernet, and other applications across switches and routers.



**STRADA Whisper Connectors**  
Transfer data at speeds of 56 Gbps with a roadmap to 112 Gbps—upgrade without costly backplane redesigns.



**Impact Connectors**  
This system is available in two designs providing flexibility to optimize for advanced mechanical and electrical performance.



**Z-PACK Slim UHD High-Speed Connectors**  
Designed to be among the densest connectors with the smallest possible footprint to free up valuable PCB space.



**Z-PACK HM-Zd Plus Connectors**  
Reduce noise and system crosstalk with this double-ground design.

ETHERNET

TE's modular jacks and plugs offer reliable and space saving solutions for flexible, time-saving installation, even in harsh environments.



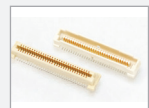
**RJ45 Connectors**  
Extensive portfolio with many configurations and solutions up to a Cat6 performance rating.



**RJ point five Connectors**  
This next-gen Ethernet link offers higher density solutions for a competitive total cost of ownership per port.

INTERNAL INTERCONNECTS

Our latest high-speed, high-density interconnects support a range of switching and router designs.



**Free Height Connectors**  
These versatile connectors are useful for downsizing applications that require parallel stacked circuit boards.



**Fine Pitch Board-to-Board (BTB)**  
0.4 mm pitch plus new shielded board-to-FPC solution.



**Mini CT Connectors**  
Miniature wire-to-board connectors that feature a compact pitch design.



**DDR4 DIMM Connectors**  
Space savings, reduced height, improved power consumption, and higher data rates than the DDR3.



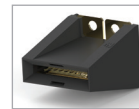
**Sliver Interconnects**  
Flexible, robust & provides optimal signal integrity, while also saving space and lowering design costs.

POWER

Robust and reliable busbar, cable, hot-pluggable and blind mating solutions.



**MULTI-BEAM XLE Connectors**  
This hot pluggable series is a space saver with slim guide sockets and vented housing for better heat dissipation.



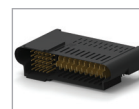
**CROWN CLIP Senior**  
Offers a low insertion/extraction force for high-current mating directly to a power bus bar.



**CROWN CLIP Junior**  
Space efficient hot pluggable design for power supply and distribution applications.



**Power Bus Bar Cable Assemblies**  
Provides efficient and reliable power distribution and quick installation in a plug-and-play design.



**MINIPAK HDL**  
High density, blind-mateable power interface for board-to-board connections. The connectors stand only 8mm off the edge of the PCB and the contacts are rated at 16A.



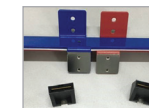
**Universal Power Module**  
Modular power connectors that are compliant with many backplane signal connector designs. They are hot pluggable and a high reliability solution.



**ELCON Mini Power Connectors**  
Low profile solutions with up to 40A per contact and positive latch retention for cable-to-PCB applications.



**Bus Bar Connectors**  
Available in board-to-bus bar, wire-to-bus bar and board-to-bus bar configurations. Provides a separable connection, easy assembly, inspection and troubleshooting.



**Bus Bar Assembly**  
Power solution that requires less space, provides better heat dissipation and easier installation when compared to cable assemblies.

COPPER CABLE ASSEMBLIES

Supporting the latest standards for 56 Gbps and beyond. Custom solutions available.



**Copper Cables**  
Our copper cable assemblies are engineered for 56 Gbps and beyond. Custom cabling solutions are also offered.