

SAFETY ORGANIZATION(S):

THIS FILTER HAS BEEN FORMALLY RECOGNIZED, CERTIFIED OR APPROVED BY THE LISTED AGENCY. THEREFORE, ALL TEST/REQUIREMENTS SPECIFIED IN THE LATEST REVISION OF THE FOLLOWING AGENCY STANDARDS HAVE BEEN MET:

- UL RECOGNIZED  
UL 1283
- CSA CERTIFIED  
CSA 22.2, NO. 0, 0.4, 8
- VDE APPROVED  
VDE 565-3

OPERATING SPECIFICATIONS:

- LINE VOLTAGE/CURRENT:  
10 AMP., 120/250 VAC  
6 AMP./40°C, 250 VAC  
50-60Hz  
40°C
- LINE FREQUENCY:  
MAX. CASE RISE  $\theta$  RATED CURRENT;  
MAX. LEAKAGE CURRENT, EACH  
LINE TO GROUND  
OPERATING AMBIENT TEMP. RANGE:

IN AN AMBIENT,  $T_a$ , HIGHER THAN 40°C, THE MAXIMUM OPERATING CURRENT,  $I_0$ , IS AS FOLLOWS:

$$I_0 = I_r \sqrt{\frac{85-T_a}{45}}$$

RELIABILITY SPECIFICATIONS:

- STORAGE TEMPERATURE:  
-40°C TO +85°C
- HUMIDITY:  
21 DAYS @ 40°C 95% RH
- CURRENT OVERLOAD TEST:  
6 TIMES RATED CURRENT FOR 8 SECONDS

TEST SPECIFICATIONS:

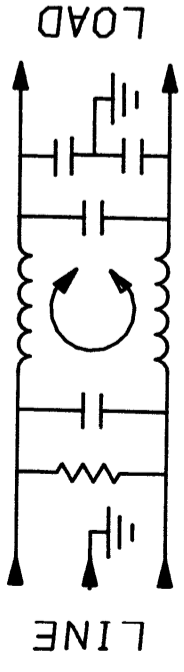
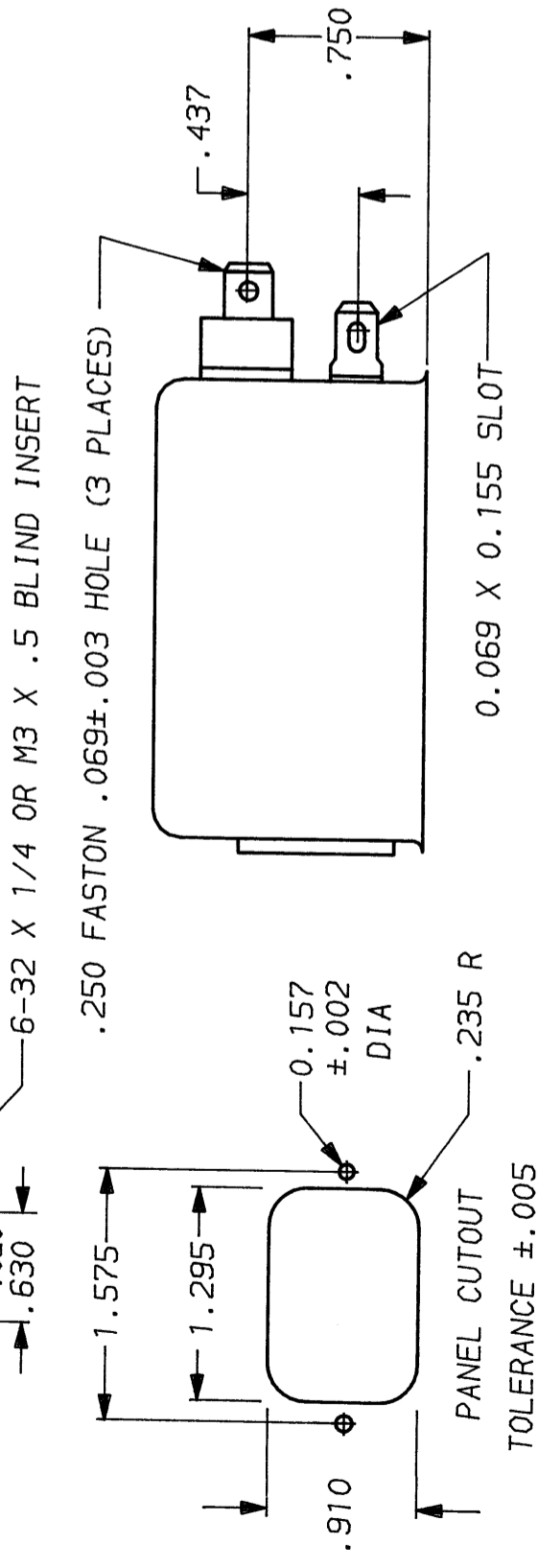
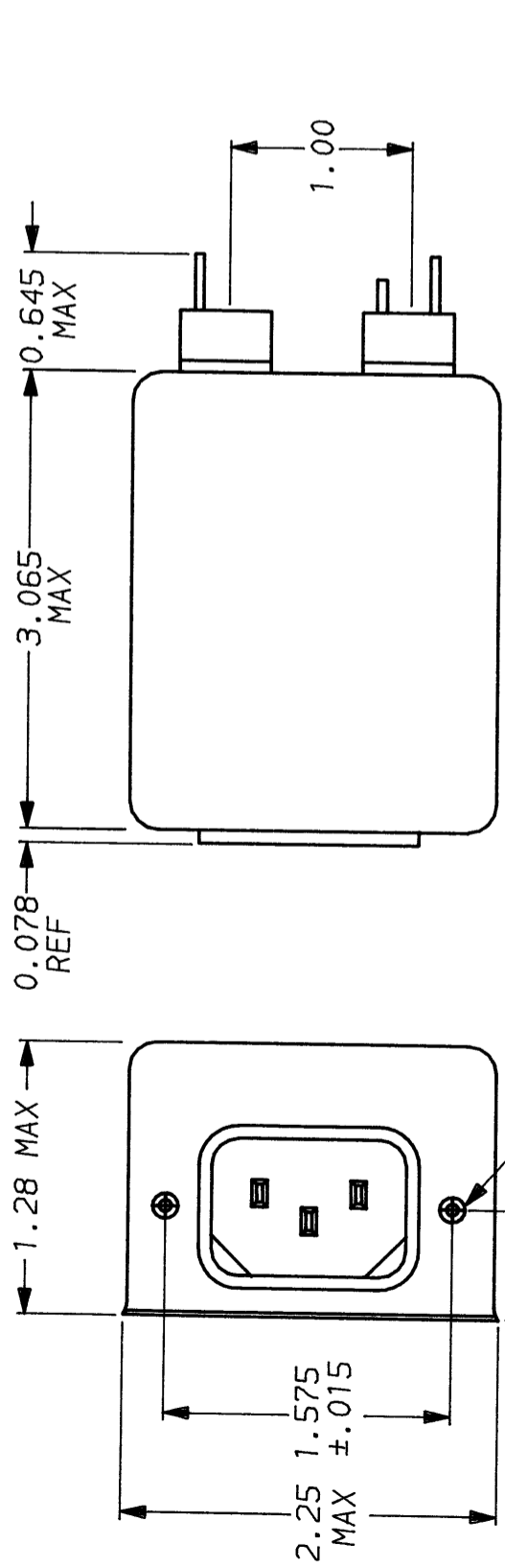
- INDUCTANCE:  
.495 mH NOMINAL
- CAPACITANCE: (MEASURED @ 1 KHZ, 0.25 VAC MAX., 25°C ±1°C)  
LINE TO GROUND: .011  $\mu$ F ±20%
- LINE TO LINE: .203  $\mu$ F ±20%
- DISCHARGE RESISTOR  
1.5M $\Omega$
- LINE/GROUND AND LINE/LINE  
INSULATION RESISTANCE  
6000 M $\Omega$  (MIN) AT 100 VDC  
20°C AND 50% RH

RECOMMENDED RECEIVING INSPECTION HIPOT:

- LINES TO GROUND: 2250 VDC FOR 1 MINUTE
- LINE TO LINE: 1450 VDC FOR 1 MINUTE

FILTER APPROVAL:

THE BEST WAY TO SELECT AND QUALIFY A FILTER IS FOR YOUR ENGINEERING TO TEST THE UNIT IN YOUR EQUIPMENT.



50 $\alpha$ - 50 $\alpha$ (MINIMUM) INSERTION LOSS								
FREQUENCY MHz	.15	.5	1	2	5	10	20	30
COMMON dB	10	25	31	37	45	49	52	53
DIFF. dB	8	4	35	55	65	65	62	62

This document is proprietary to CORCOM INC. and is not to be reproduced nor used for manufacturing purposes except on CORCOM's order or prior written consent.



POWER LINE FILTER

SCALE	DATE	DRG. NO.	REV.
NTS	7-31-90	10VK7 & 7M	5
DRW. BY	ORIGINATOR		
CFW	CFW		