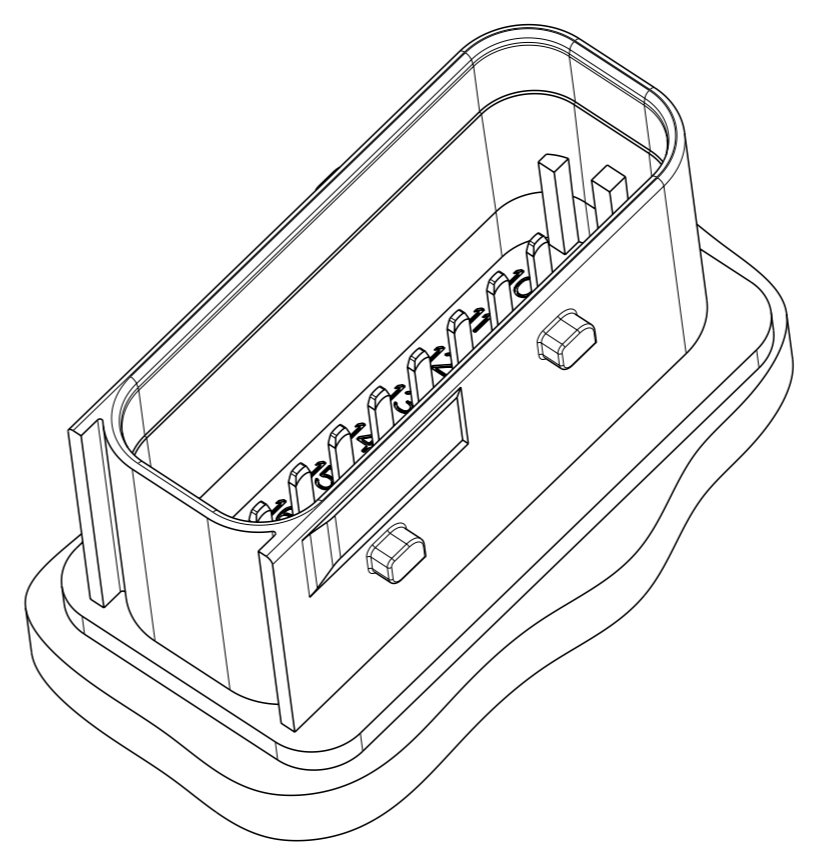
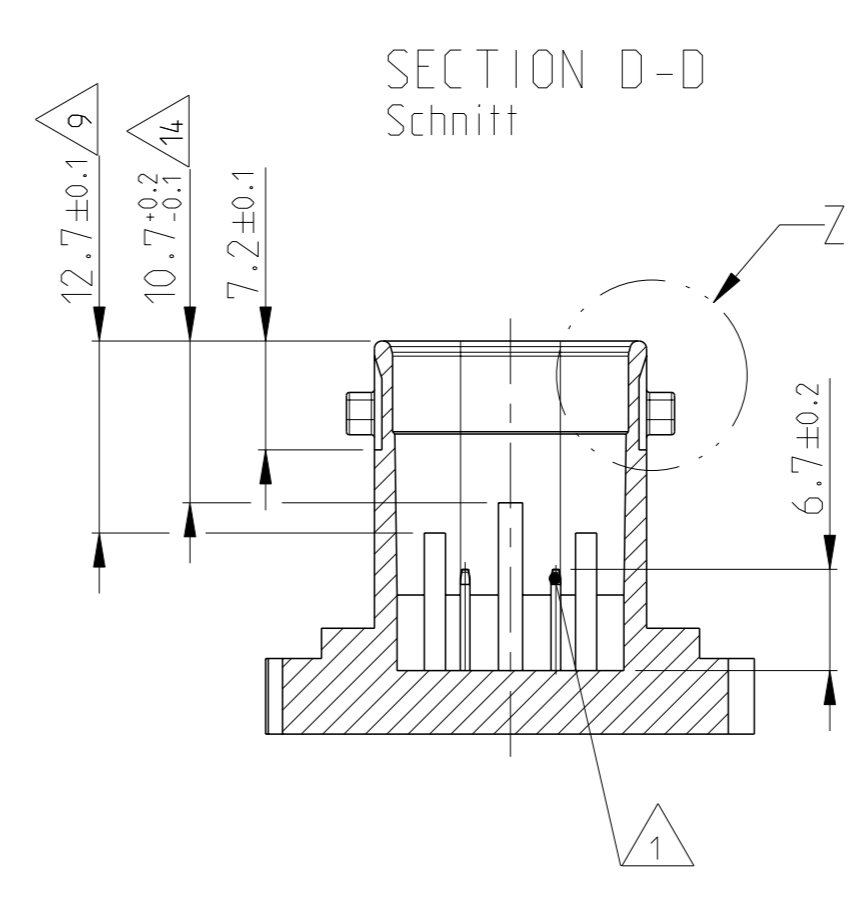
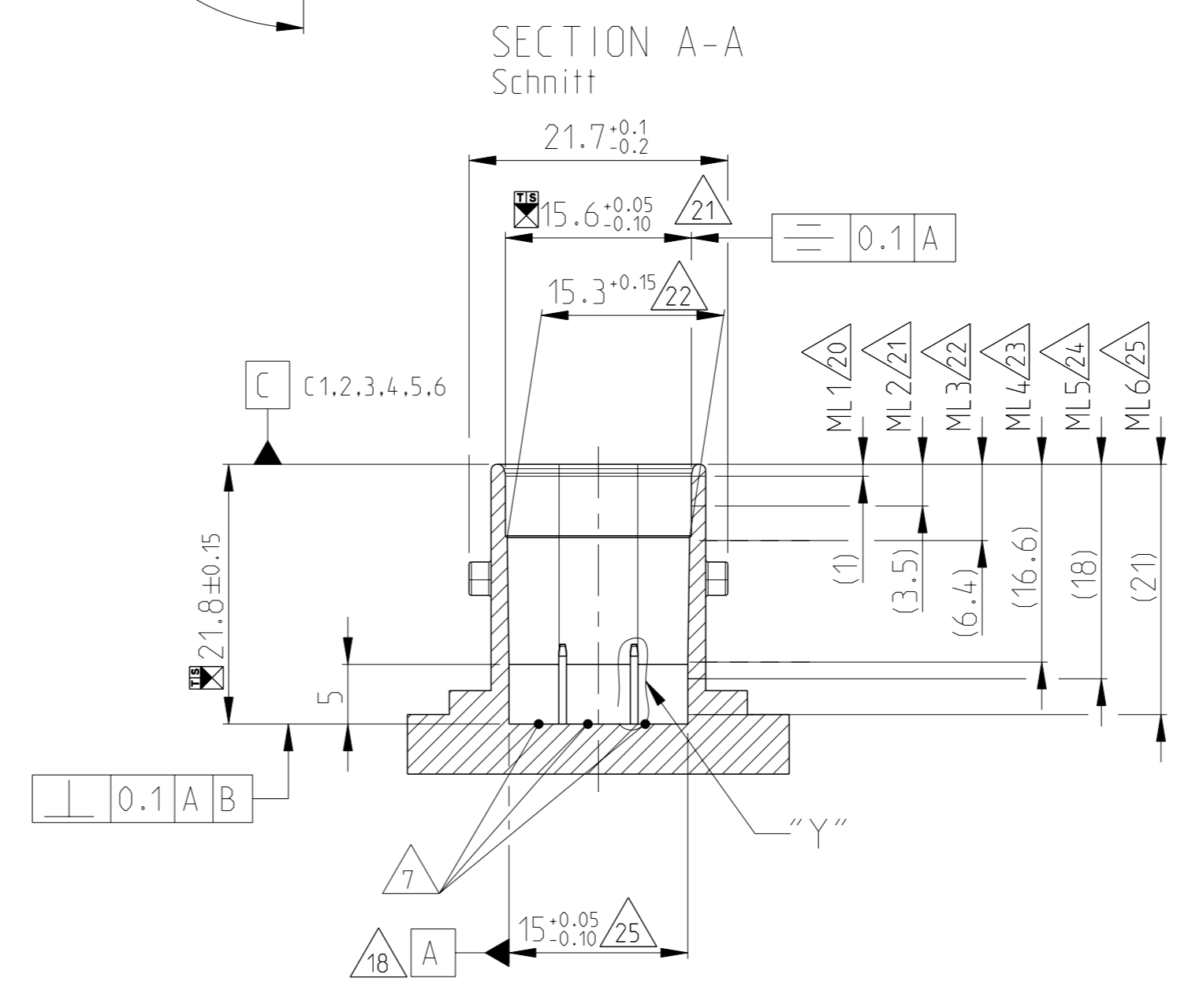
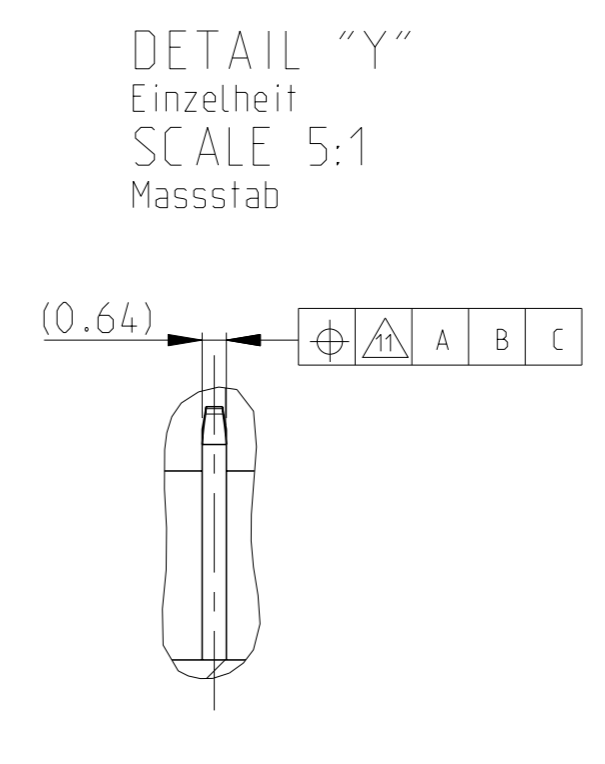
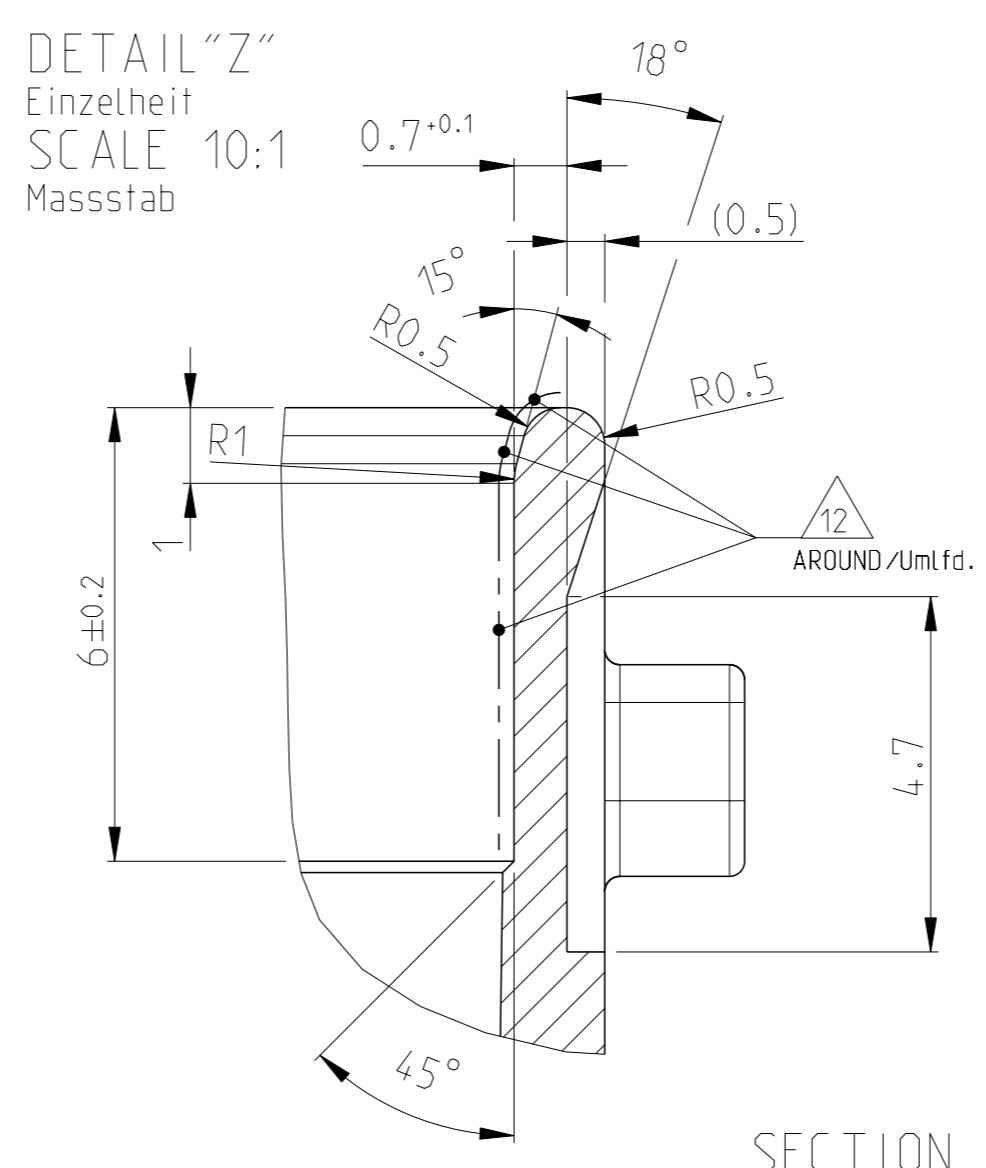
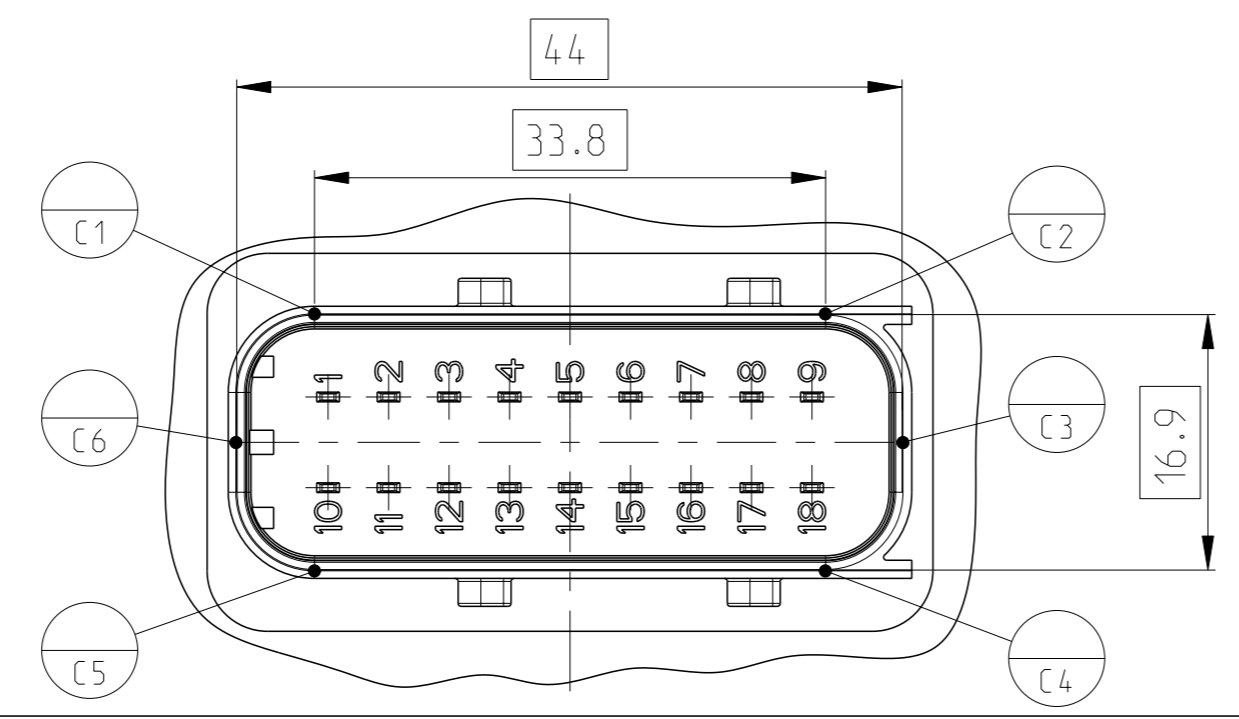
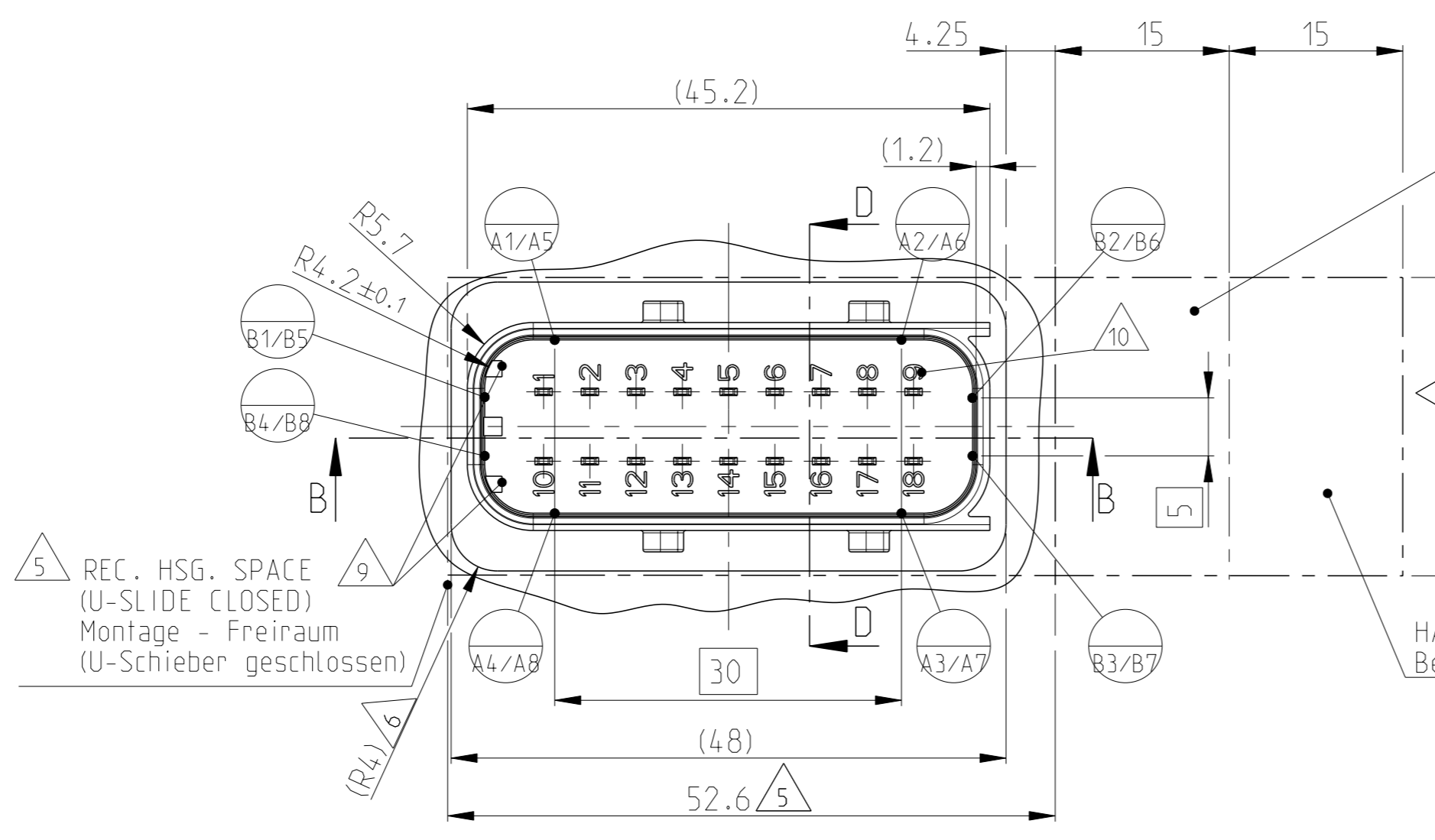
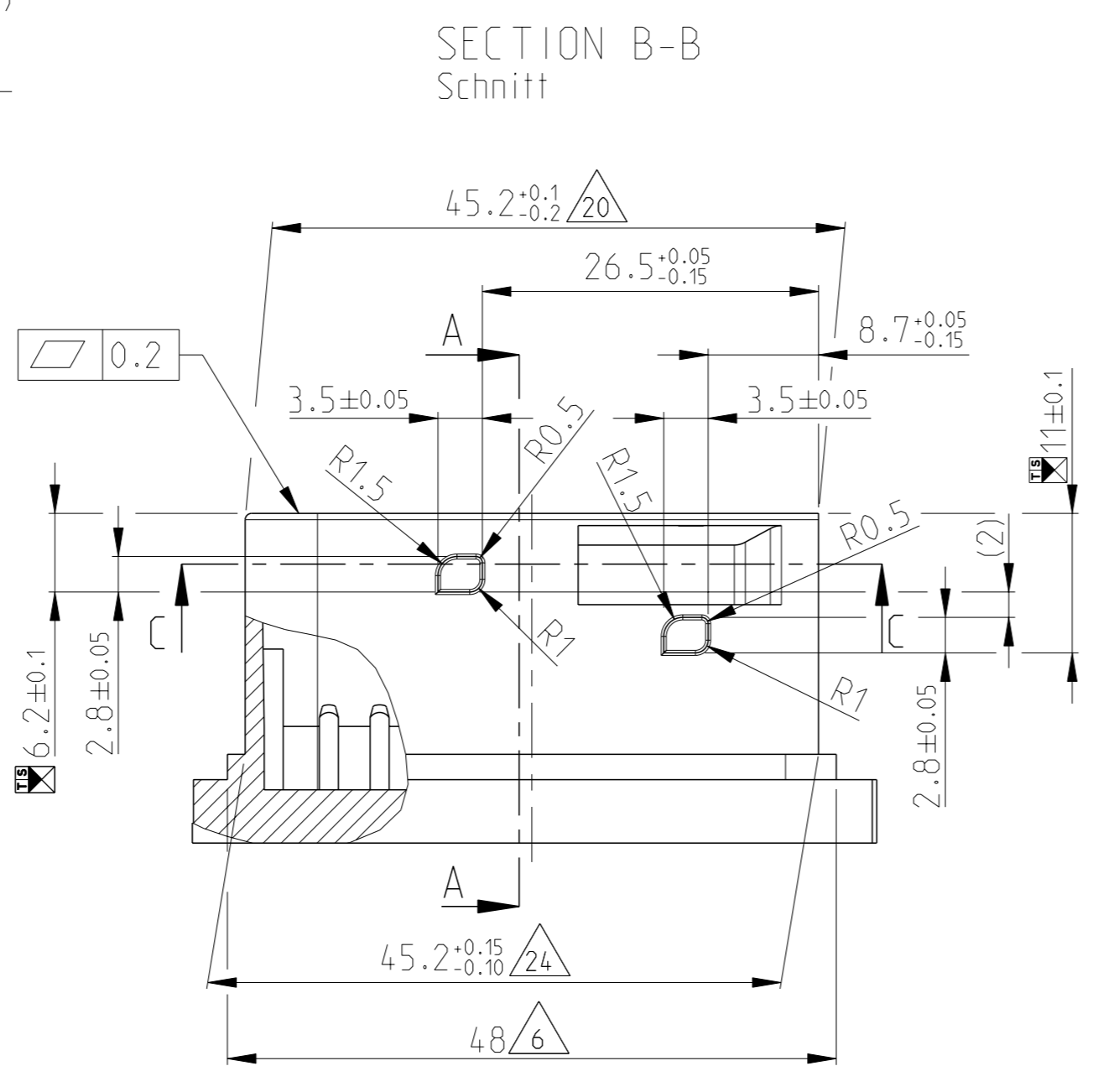
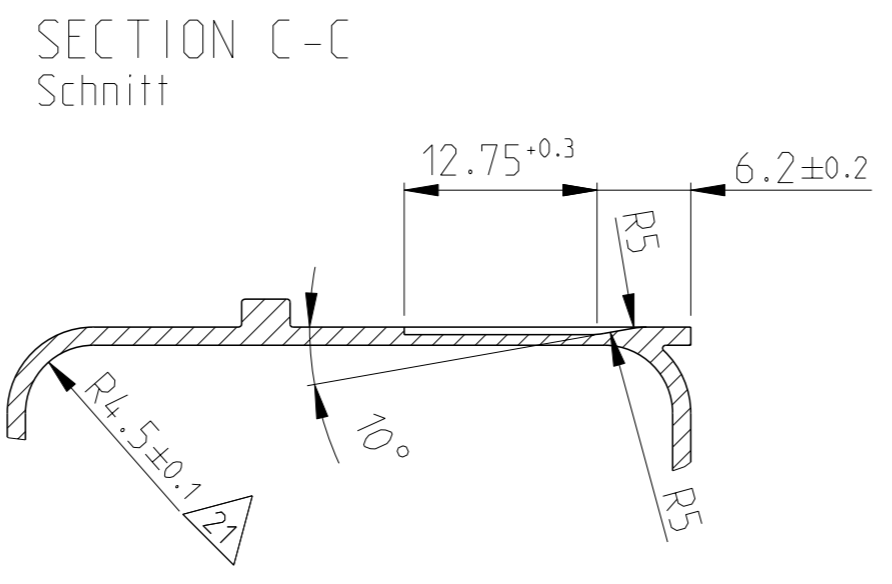
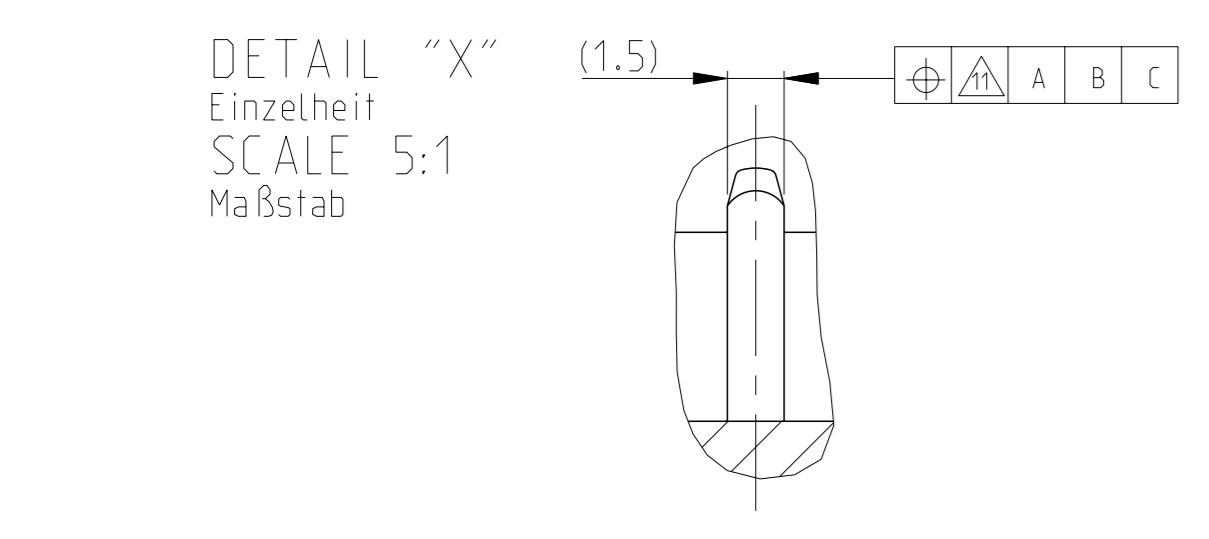
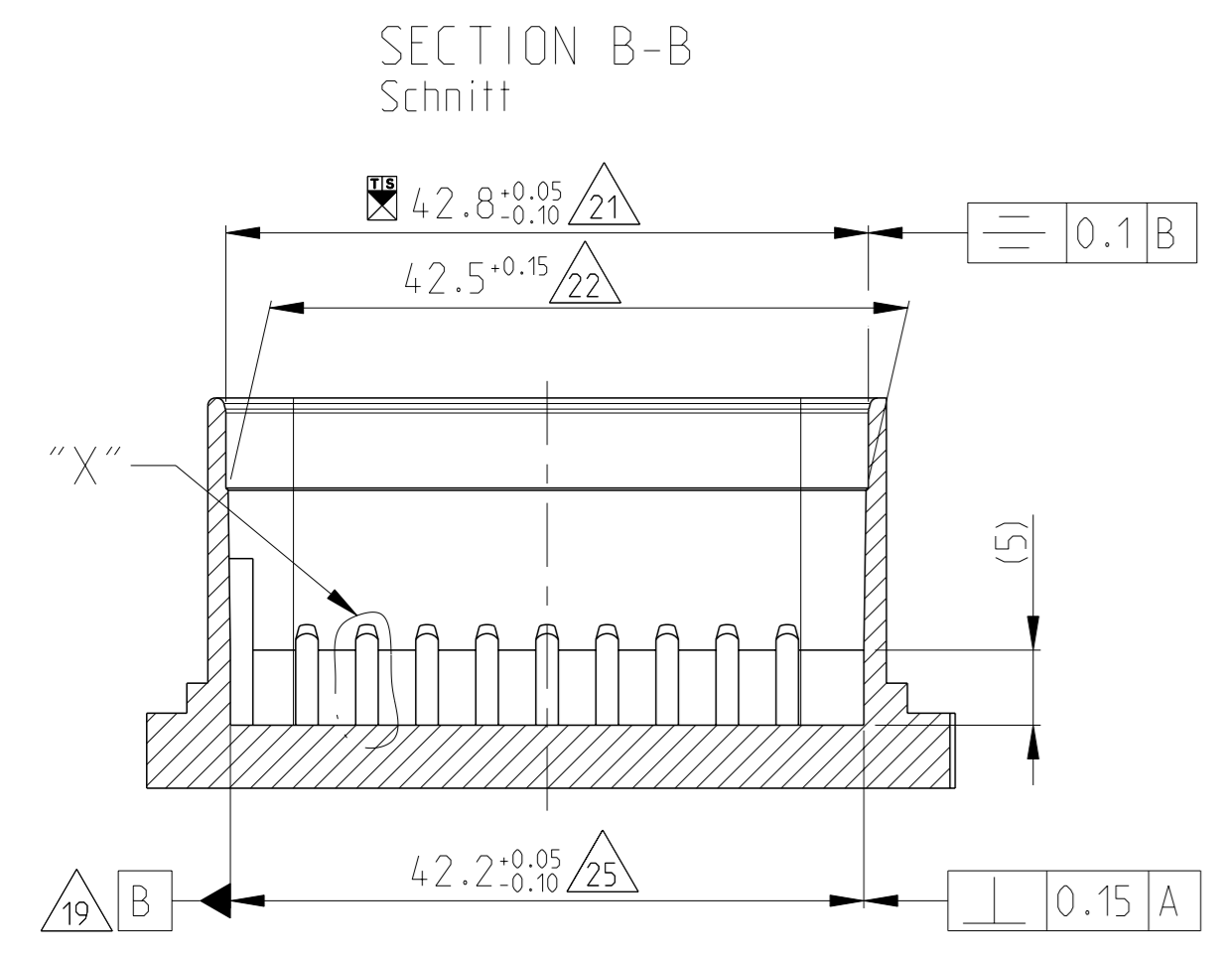
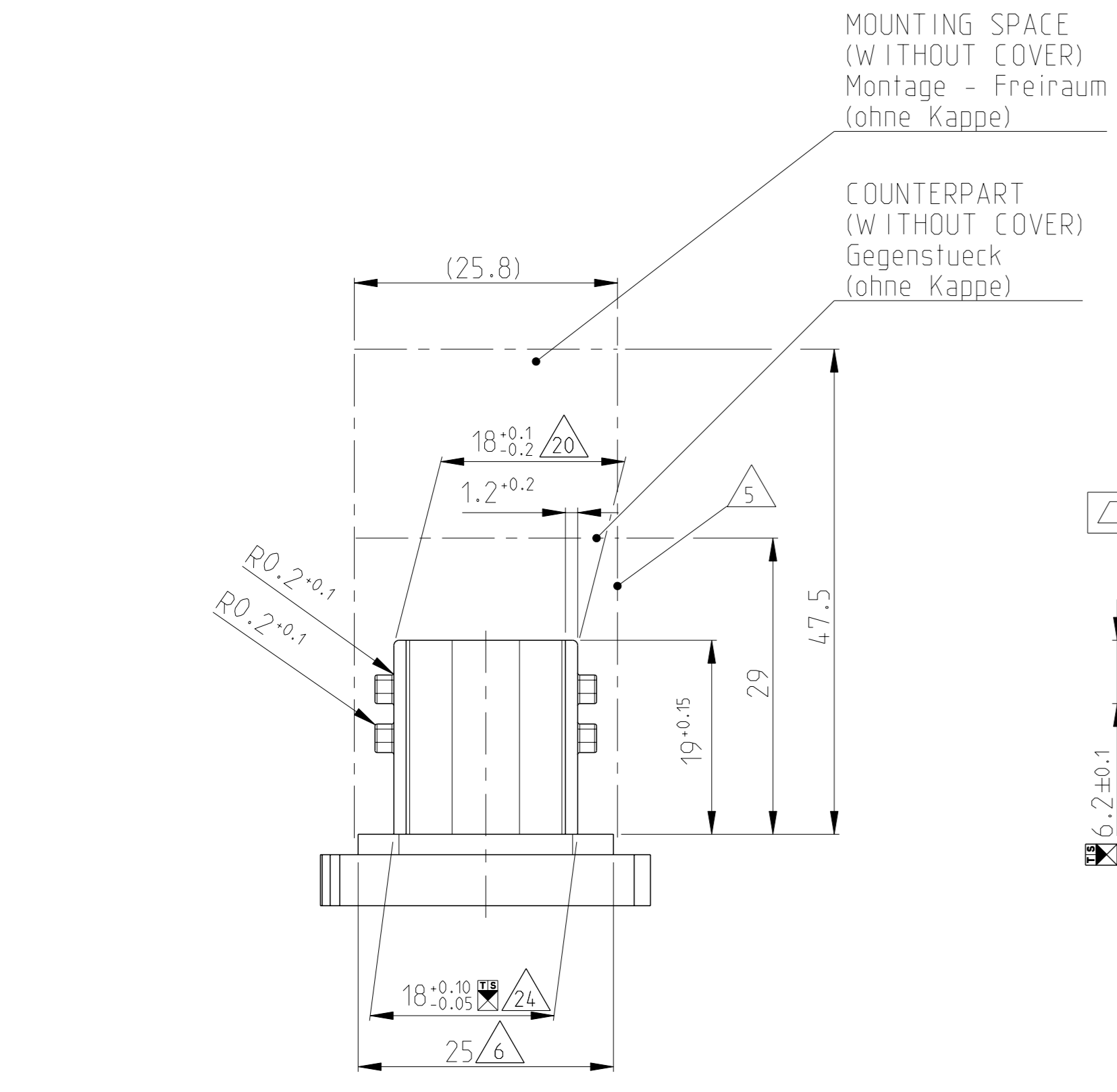


AS SHOWN CODE "A"  
wie gezeigt Kodierung "A"

MATED WITH: 1-1563759-1  
Passend zu: 1-1563759-1



PROJEKT NR.:		REVISIONS				
		ÄNDERUNGEN	BESCHREIBUNG	DATE	DWN	APVD
A5	ORDER FOR CAVITY NO. CHANGED			06FEB2020	MAH	GILC
A6	Added coding E and F			30MAR2020	FRAN	GILC
A7	Updated note 16			22JUL2022	DM	W IBO
A8	NEW VERSION ADDED AND TITLE UPDATED			08AUG2023	RK	AW

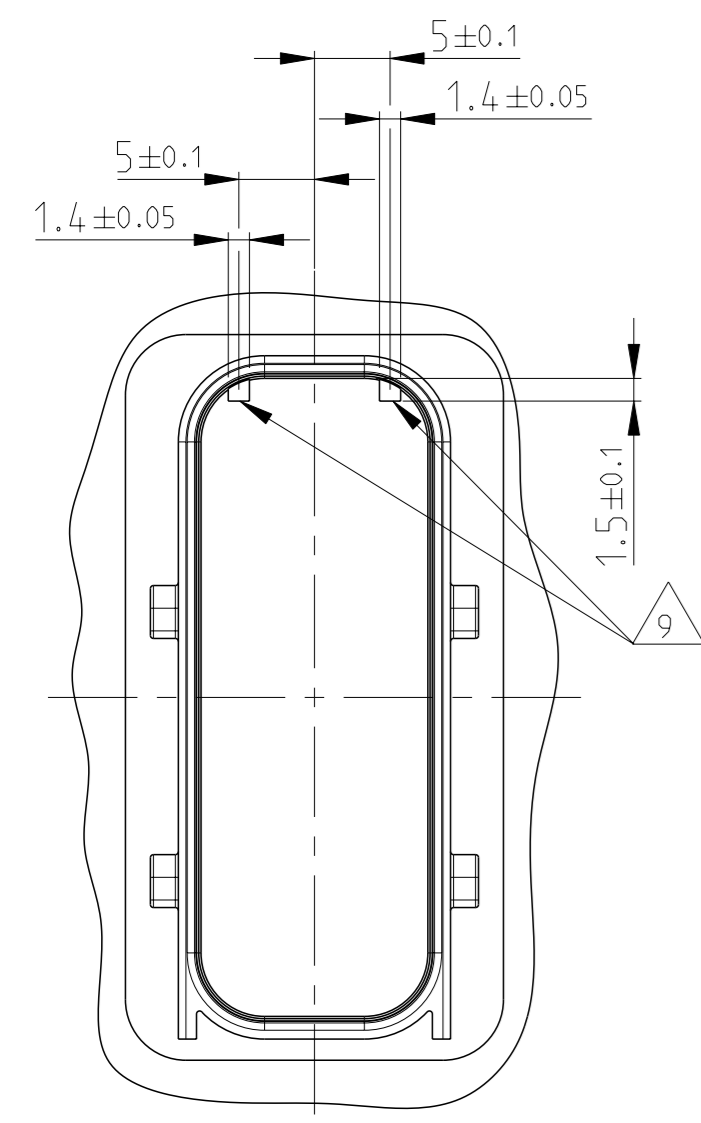
- NOTES  
Bemerkungen
- DIMENSIONS ACC. TO TAB INTERFACE-DRAWING  
TE-NO.: 114-94201 (TAB 1.5x0.6, TAB 2.8x0.8 AND TAB 5.8x0.8)  
Abmessungen nach Flachstecker-Ausführungsvorschrift  
TE-NO.: 114-94201 (TAB 1.5x0.6, TAB 2.8x0.8 UND TAB 5.8x0.8)
  - 
  - THE BASE MATERIAL OF THE TABS HAS TO BE CHOSEN ACC. TO THE REQUESTED MAX. CURRENT LOAD, THE SURFACE IN ACCORDANCE WITH THE COUNTERPART.  
Das Basismaterial der Kontakte muss gemäss der benötigten Strombelastung ausgewählt werden, die Oberfläche in Übereinstimmung mit der des Gegenstecks.
  - ALL SYMMETRIC DIMENSIONS  
Alle Symmetriemaße  $\frac{\square}{\square} 0.1$
  - SPACE REQUIREMENTS OF COUNTERPART WITHOUT COVER;  
SEE RELEVANT DRAWING FOR DETAILS  
Platzbedarf des Gegenstecks ohne Abdeckung;  
siehe entsprechende Zeichnung fuer Einzelheiten
  - MIN. REQUIRED PLANE AREA UNDER THE COUNTERPART  
(CORRESPONDS TO THE OUTER CONTOUR OF THE MATING FACE)  
Mindestens erforderliche plane Fläche unter dem Gegensteck  
(entspricht der äusseren Kontur des Steckgesichts)
  - MATERIAL REMOVAL IN THIS AREAS TO THE MANUFACTURER'S DISCRETION  
Materialentnahme in diesem Bereich nach Wahl des Herstellers
  - ALL RADII EXCEPT AS NOTED R0.2-0.1  
Unbemaste Radien
  - DIFFERENT CODINGS  
Unterschiedliche Kodierungen
  - PIN-NUMBERING  
Stiftnummerierung
  - LINEAR INCREASING FROM Ø0.2MM AT THE LEVEL OF 25  
UP TO Ø0.4MM AT THE LEVEL OF 23  
Linear zunehmend von Ø0.2mm auf Niveau 25 bis zu Ø0.4mm auf Niveau 23
  - SEALING AREA, POLISHED MOULD SURFACE  
ROUGHNESS ON TOOLING CORES Ra=0.3µm  
SMOOTH SURFACE, NO FLASH OR DRAFT IN THIS ZONE  
Dichtfläche, in diesem Bereich Kerne polieren  
Werkzeugoberfläche Ra=0.3µm,  
keine Ausformschraege und Werkzeugtrennung zulässig
  - DATUM POINTS ARE MEASURING POINTS.  
Bezugspunkte sind Messpunkte.
  - DIFFERENT POLARISATION FOR 4POS, 8POS, 12POS, 15POS, 16POS, 18POS.  
Unterschiedliche Polarisierungen fuer 4pol, 8pol, 12pol, 15pol, 16pol, 18pol.
  - 
  - SUITABLE COUNTERPART:  
Passendes Gegensteck:  
4POS.: AMP MCP 6.3/4.8k TE NO.: 1564330  
8POS.: AMP MCP 2.8k/6.3 TE NO.: 2299782  
10POS.: AMP MCP 1.5k/6.3 TE NO.: XXXXXXX  
12POS.: AMP MCP 2.8 TE NO.: 1670901  
13POS.: AMP MCP 1.5k/2.8/5.8 TE NO.: 2358263  
15POS.: AMP MCP 1.5k/2.8 TE NO.: 1563878  
16POS.: AMP MCP 1.5k/2.8 TE NO.: 1564337  
18POS.: AMP MCP 1.5k TE NO.: 1563759
  - DATUM A IS CREATED THROUGH THE MEASURING LEVELS ML3 (A5-A8) AND ML6 (A1-A4).  
Bezug A wird durch die Messebenen ML3 (A5-A8) und ML6 (A1-A4) gebildet.
  - DATUM B IS CREATED THROUGH THE MEASURING LEVELS ML3 (B5-B8) AND ML6 (B1-B4)  
Bezug B wird durch die Messebenen ML3 (B5-B8) und ML6 (B1-B4) gebildet.
  - MEASURING LEVEL 1 (ML1)  
Messebene 1 (ML1)
  - MEASURING LEVEL 2 (ML2)  
Messebene 2 (ML2)
  - MEASURING LEVEL 3 (ML3)  
Messebene 3 (ML3)
  - MEASURING LEVEL 4 (ML4)  
Messebene 4 (ML4)
  - MEASURING LEVEL 5 (ML5)  
Messebene 5 (ML5)
  - MEASURING LEVEL 6 (ML6)  
Messebene 6 (ML6)
  - FUNCTIONAL MEASUREMENTS WITH ■ REFERRED TO MEASURE POINTS  
ALL DIMENSIONS HAVE TO BE DOCUMENTED  
Funktionsbestimmende Masse mit ■ gekennzeichnet  
Alle Masse sind ueber die Messpunkte zu dokumentieren

DIESE ZEICHNUNG IST EIN KONTROLLIERTES DOKUMENT. BEMASSUNGEN UND TOLERANZEN GEMAESS GPS (ISO STANDARD).		DWN A. Kidane 10MAR2008	
THIS DRAWING IS A CONTROLLED DOCUMENT. DIMENSIONING AND TOLERANCING PER GPS (ISO STANDARD)		CHK J. GARDZOW 11MAR2008	
DIMENSIONS: MASSENEHREN mm	TOLERANCES UNLESS OTHERWISE SPECIFIED: ALLE TOLERANZEN	APVD C. Scherwin 12MAR2008	NAME C. Scherwin
	PLC ± ISO 8015 P ± DIN 9137 S ± DIN 9137 R ± DIN 9137	PRODUCT SPEC 108-94201	PRODUCT SPEC 108-94201
MATERIAL	FINISH/BOERFLAEHE/FARBE	APPLICATION SPEC VERARBEITUNGSBEZ. 114-18756	APPLICATION SPEC VERARBEITUNGSBEZ. 114-18756
	WEIGHT GEWICHT	SIZE GRÖSSE	RESTRICTED TO NUR FÜR
		00779	
		©=114-18799-1	
	INTERFACE DRAWING	/KUNDENZEICHNUNG	SCALE MASSSTAB 2:1
		SHEET BLATT 1	REV AB

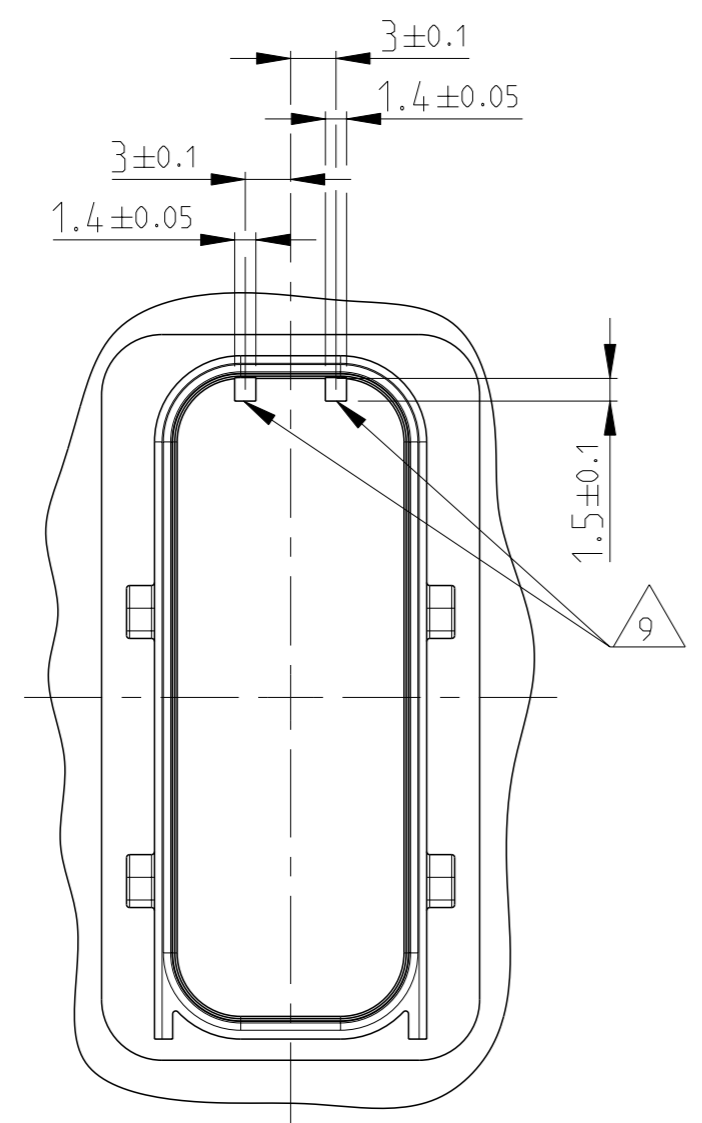
printed on 9 Aug 2023 15:22 (india Standard Time) from 1E549301



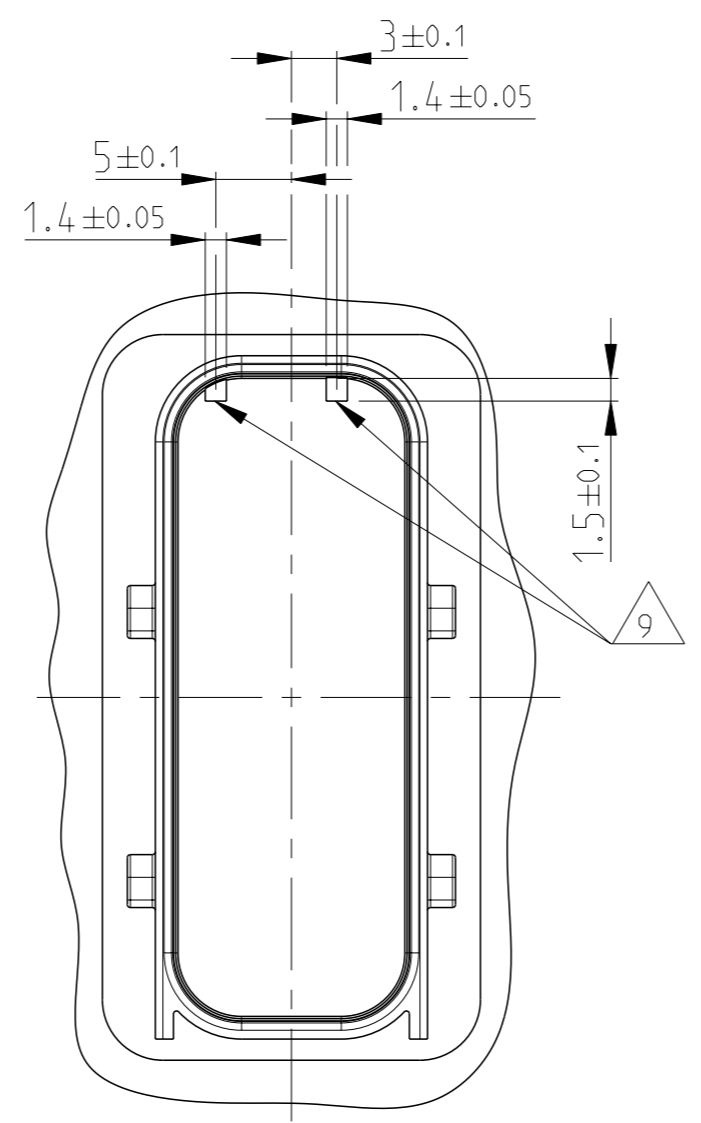
REVISIONS				
#	LY#	DESCRIPTION	DATE	OWN APVD
-	-	SEE SHEET 1	-	-



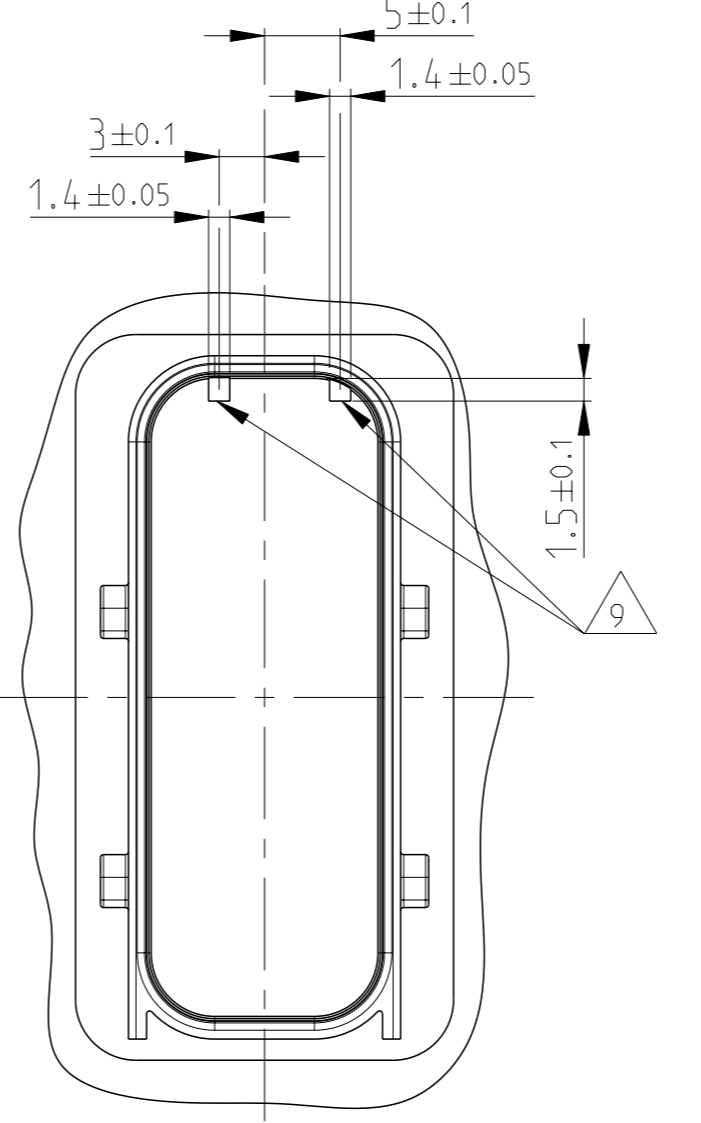
CODE A  
Kodierung A 1-.....-1



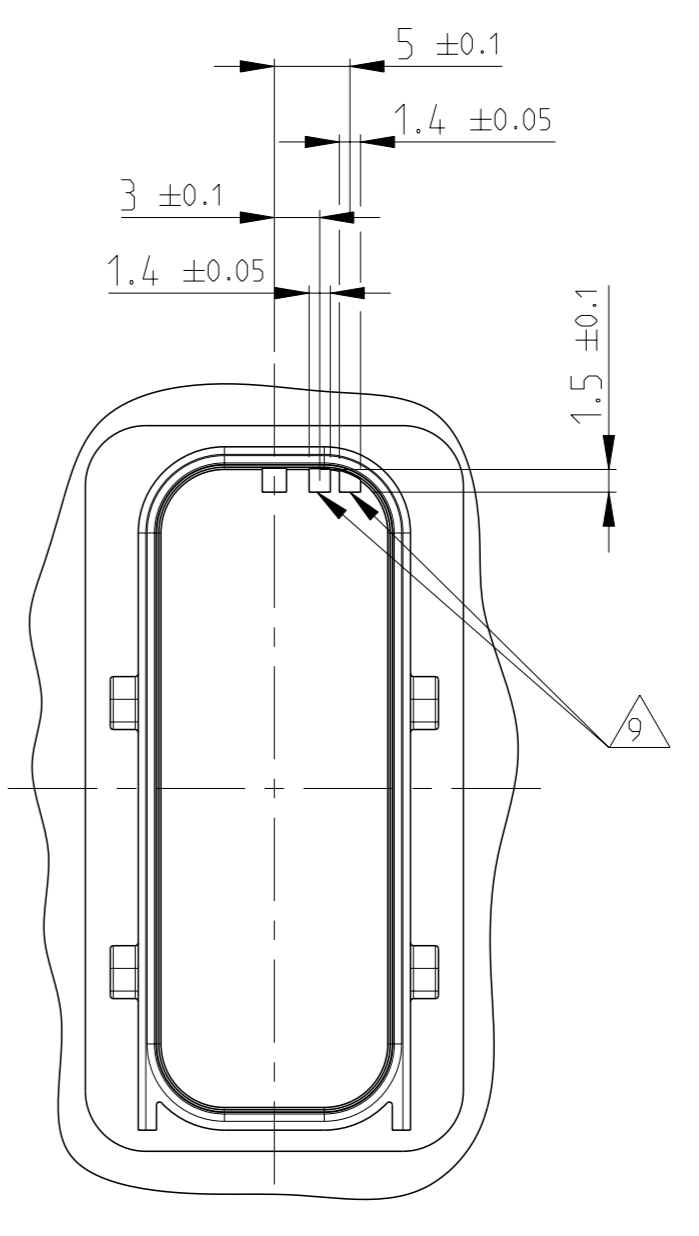
CODE B  
Kodierung B 2-.....-1



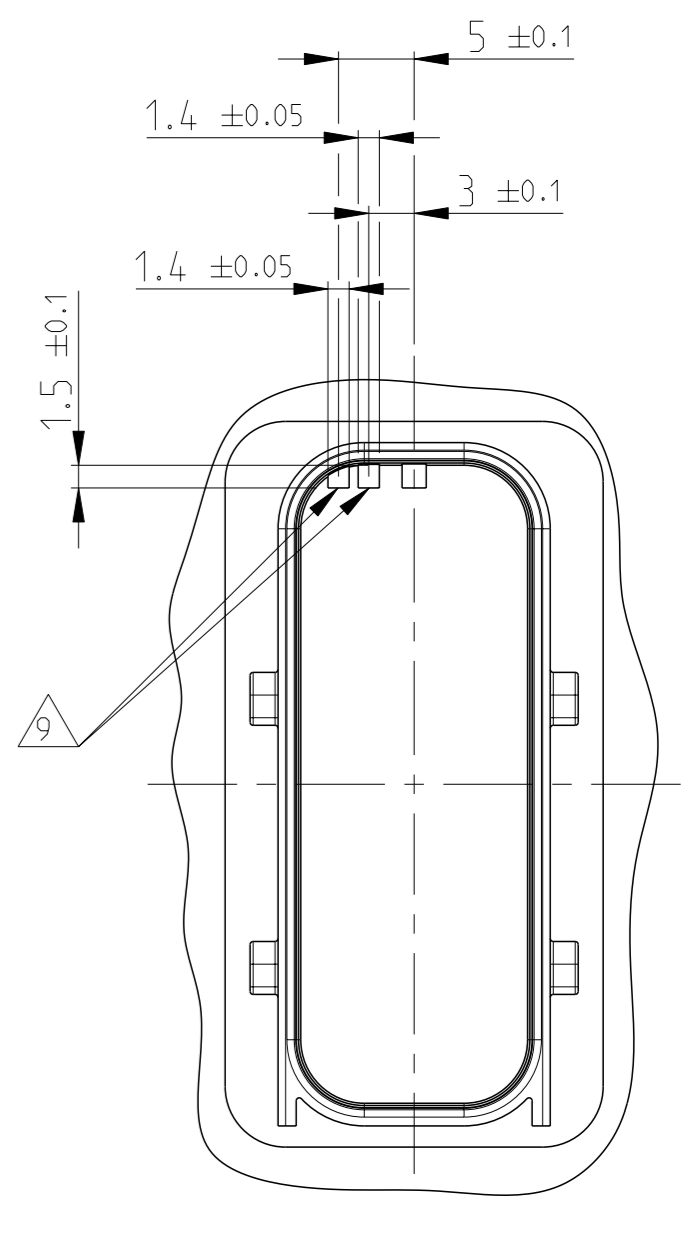
CODE C  
Kodierung C 3-.....-1



CODE D  
Kodierung D 4-.....-1



CODE E  
Kodierung E 5-.....-1



CODE F  
Kodierung 6-.....-1

DIESE ZEICHNUNG IST EIN KONTROLLIERTES DOKUMENT. BEMASSUNGEN UND TOLERANZEN GEMAESS GPS (ISO STANDARDS).		THIS DRAWING IS A CONTROLLED DOCUMENT. DIMENSIONING AND TOLERANCING PER GPS (ISO STANDARDS).		DWN: A.Kidane 10MAR2008 CHK: J.GRADZOW 11MAR2008	
DIMENSIONS: MASSENHEITEN (mm)		TOLERANCES UNLESS OTHERWISE SPECIFIED: ALLIGERINTOLERANZEN		APVD: C.Schwein 12MAR2008	
				NAME: HEADER INTERFACE 4-18POS Schchnittstelle Messerleiste 4-18pol.	
MATERIAL: -		FINISH/OBERFLAECHE/FARBE: -		PRODUCT SPEC: 108-94.020	
WEIGHT: -		GEWICHT: -		APPLICATION SPEC: 114-18756	
INTERFACE DRAWING		SCALE: MASSSTAB 2:1		SIZE: A1	
CAGE CODE: 00779		DRAWING NO: 114-18799-1		RESTRICTED TO: MR. HUBER	
SHEET: 3		OF: 3		REV: A8	