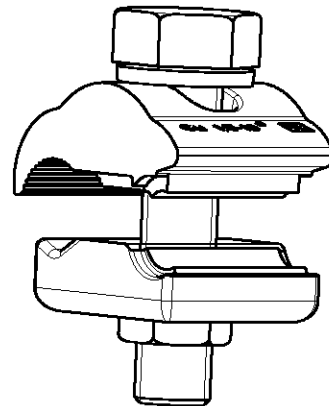
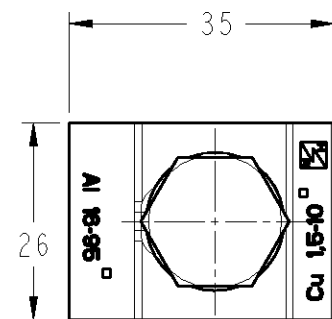
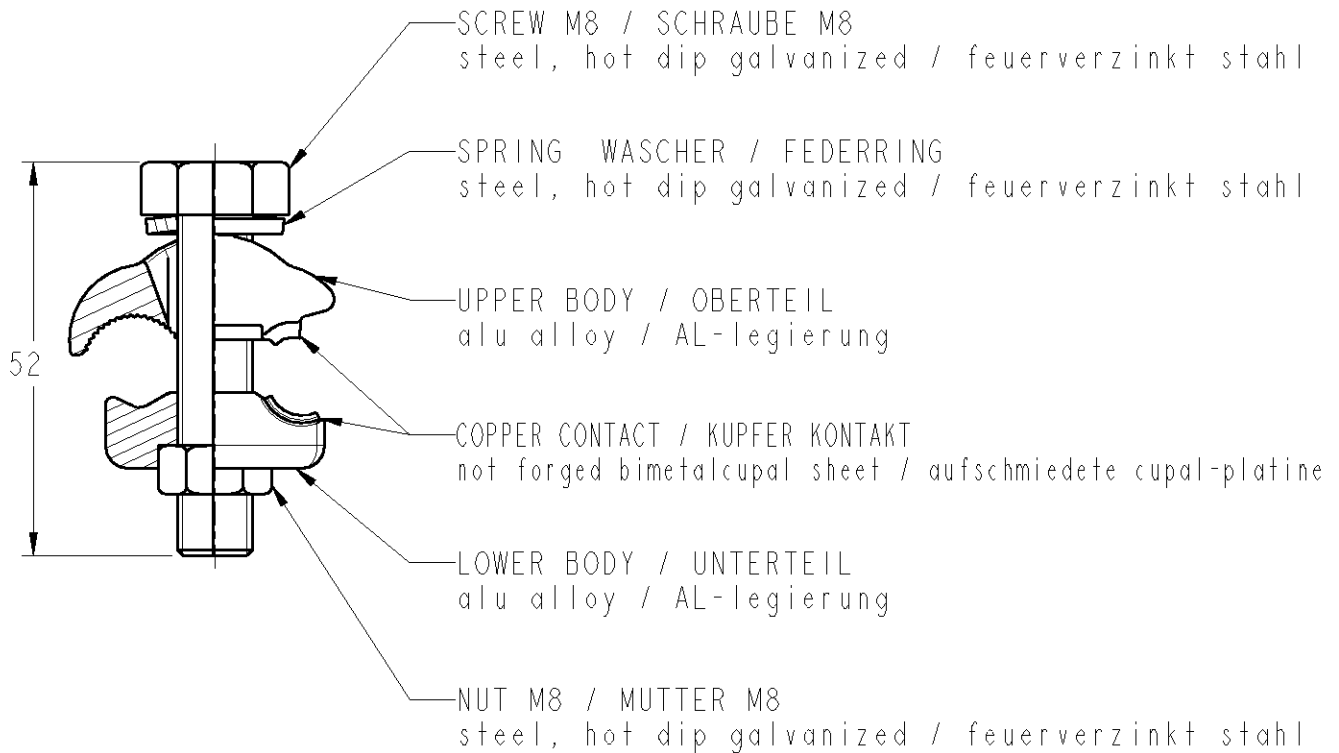


LOC	DIST	REVISIONS				
P	LTR REV	DESCRIPTION MODIFICATIONS	DATE	DWN DESS.	APVD APP.	
FH	2	A	CREATION	01 OCT 2008	CA AG	



Capacity / Klemmbereich : 16-95 mm² AL
 1,5-10 mm² CU

Tightening torque / Anzugsmoment : 22 N.m

TOLERANCES UNLESS OTHERWISE SPECIFIED	-
TOLERANCES NON SPECIFIEES:	-
FINISH	-
FINITION	-

DIMENSIONS:	DWN / DESSINE	01 OCT2008
mm	C. ANDRE	
TOLERANCES UNLESS OTHERWISE SPECIFIED TOLERANCES NON SPECIFIEES (SUIV. NR DE DECIMALES): 0 PLC / DEC: ±0 1 PLC / DEC: ±0 2 PLC / DEC: ±0 3 PLC / DEC: ±0 4 PLC / DEC: ±0 ANGLES ±	CHK / VERIFIE	-
	G. NEDELLEC	-
	APVD / APPROUVE	-
	A. GUICHARD	-
	PRODUCT SPEC	-
	SPEC. PRODUIT	-
	APPLICATION SPEC	-
	SPEC. APPLICATION	-
	WEIGHT	- g
	MASSE APPROX.	- g

MATERIAL MATIERE -

Tyco Electronics SIMEL PRODUCTS

NAME TITRE: HEL-3920

SIZE FORMAT: A4
 CAGE CODE: -
 DRAWING NO No PLAN: C=1199953-5
 RESTRICTED TO RESERVE A: -

CUSTOMER DRAWING / PLAN CLIENT UNIQUEMENT POUR REFERENCE SCALE ECHELLE : SHEET FEUILLE OF DE REV A