

4

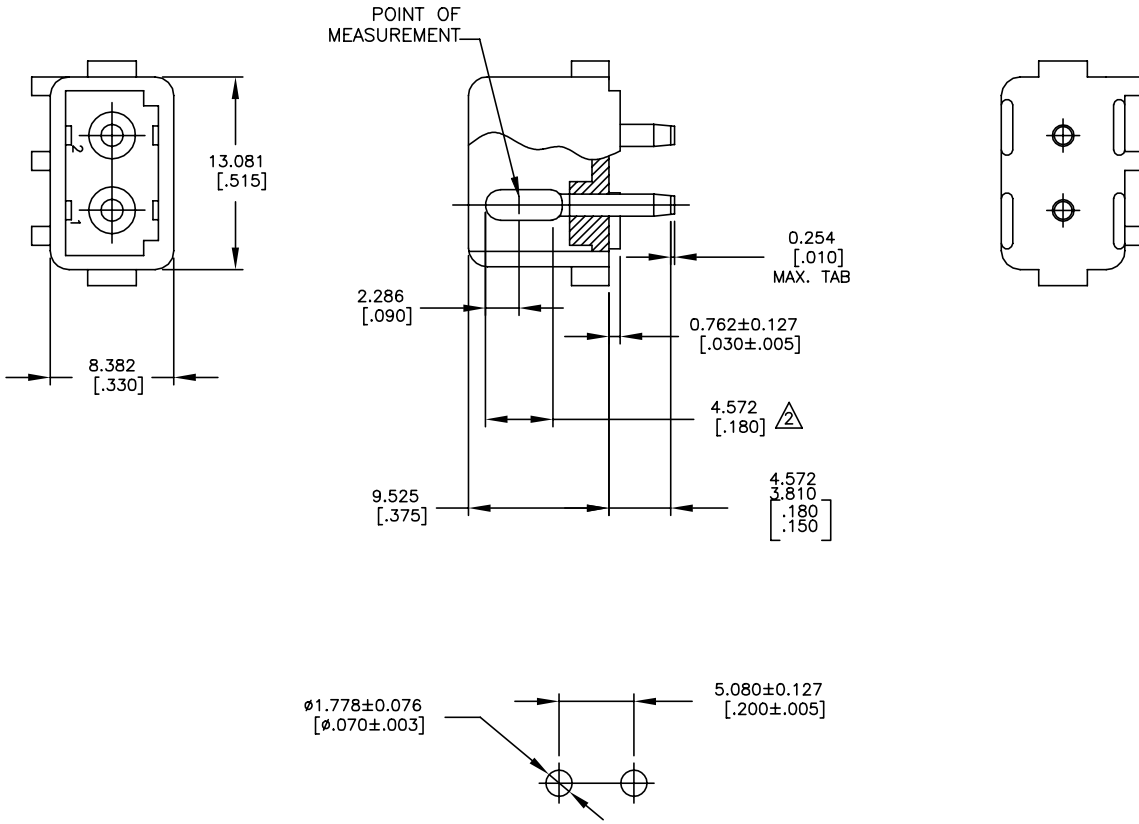
3

2

1

THIS DRAWING IS UNPUBLISHED. RELEASED FOR PUBLICATION  
 © COPYRIGHT 158651By - ALL RIGHTS RESERVED.

REVISIONS				
P	LTR	DESCRIPTION	DATE	APVD
	A1	REVISED PER ECR-21-117185	25OCT2021	PJ VS



- PARTS MUST COMPLY WITH SOLDERABILITY SPEC. 109-11-3.
- CONTACT IS PLATED OVERALL WITH .000050 NICKEL, THEN .000030 GOLD OVER CONTACT LENGTH INDICATED AND MATTE TIN ON SOLDER TAIL END.
- PRELIMINARY PART NOT RELEASED FOR PRODUCTION.
- DIMENSION SHOWN REPRESENT PRODUCT IN DRY CONDITION. ADDITIONAL 2% GROWTH DUE TO END USE LOCATION MOISTURE ABSORPTION MAY OCCUR AND SHOULD BE ACCOUNTED FOR.

RECOMMENDED LAYOUT FOR  
 1.575 [.062] THICK P.C. BOARD

**METRIC**

1586512-3	NYLON-NAT VO.	COPPER ALLOY-GOLD ⚠
1586512-2	NYLON-NAT.	COPPER ALLOY-GOLD ⚠
ASSEMBLY NO.	HSG, MATL& COLOR	PIN MATL & FINISH

THIS DRAWING IS A CONTROLLED DOCUMENT.		DWN	06OCT2005	
DIMENSIONS: mm [INCHES]		CHK	19SEP2013	
TOLERANCES UNLESS OTHERWISE SPECIFIED:		APVD	06OCT2005	
0 PLC ± - 1 PLC ± - 2 PLC ± - 3 PLC ± - 4 PLC ± - ANGLES ± -		PRODUCT SPEC	NAME	
MATERIAL SEE TABLE		FINISH	2 CIRCUIT COMMERCIAL MATE-N-LOK (TM) HEADER	
SEE TABLE		WEIGHT	SIZE	RESTRICTED TO
			A3 00779	
		CUSTOMER DRAWING	DRAWING NO	
			C=1586512	
		SCALE	SHEET	REV
		3:1	1 of 1	A1

**STE** TE Connectivity