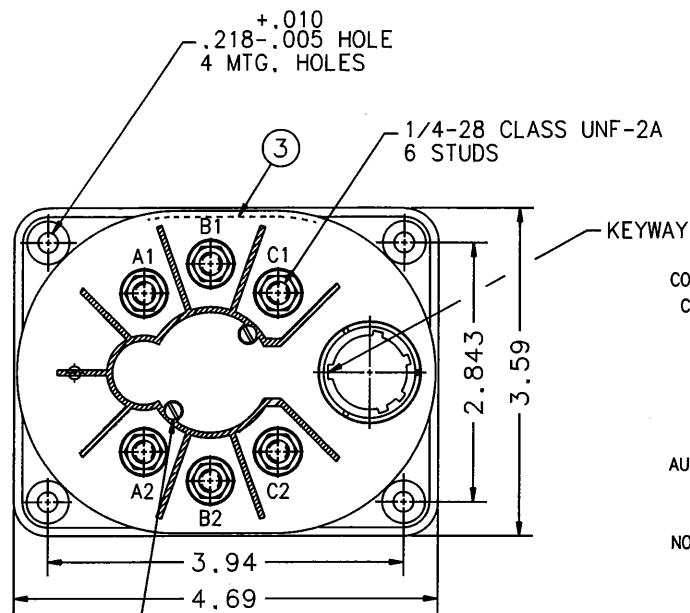


REV.		DESCRIPTION	DATE	APPROVED
M	26128	REDRAWN ON CAED'S. ITEM 8 WAS FISHPAPER	94/06/06	R.S.
N	26208	A2,B2,C2 WAS A3,B3,C3	94/07/08	R.S.
P	34653	(REF) ADDED TO CONNECTOR	98/01/06	RS



CONSTRUCTION CONTACTS

NOMINAL CONTACT VOLTAGE
 MAIN CONTACT CONFIGURATION
 RATING: RESISTIVE
 INDUCTIVE

AUXILIARY CONTACT CONFIGURATION RATING

NOMINAL COIL VOLTAGE
 PICKUP VOLTAGE

DROPOUT VOLTAGE

TEMPERATURE RANGE
 MIN. OPERATING CYCLES
 MAX. WEIGHT

HERMETICALLY SEALED

115/200 VAC, 400 HZ
 3PST NO
 120 AMP, 400 HZ
 120 AMP, 400 HZ

7PST, 3 N.O. - 4 N.C.
 7.5 AMP, 400 HZ

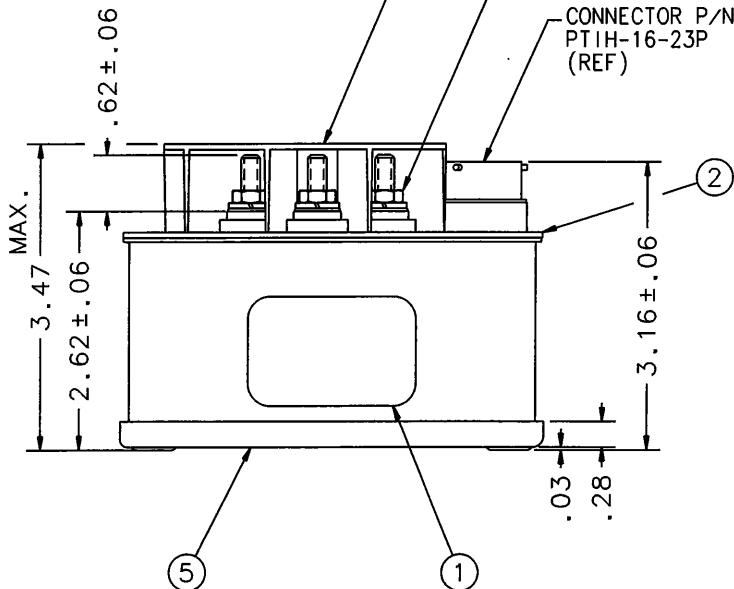
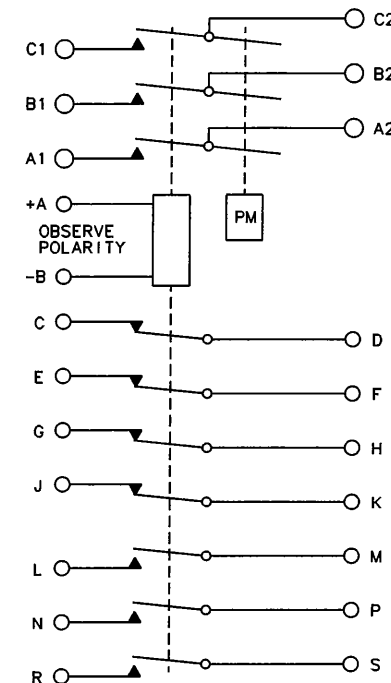
28 VDC
 21 VDC MAX. AT 120°C
 18 VDC MAX. AT 71°C

7 +0, -5.5 VDC

-55°C TO +120°C

50,000

2 LBS. 6 OZ.



10	6	51807-034	WASHER - 1/4 SPLIT LOCK	MS35338-101	BRONZE
9	2	51805-011	WASHER - NO. 5 SPLIT LOCK	AN935B5L	BRONZE
8	2	51701-180	WASHER .015 X .103 X 3/16		MYLAR
7	2	51205-291	SCREW 5-40 X 5/8 RD. HD.		BRASS
6	6	50407-074	NUT 1/4-28 X 3/8 X 3/16 HEX.		BRASS
5	1	19951-030	CONTACTOR ASSEMBLY - PRIMARY		
4	1	18806-001	SHIELD - TERMINAL		
3	1	20076-001	PLATE - WIRING DIAGRAM		
2	1	18345-002	PLATE - BASE COVER		
1	1	16043-001	PLATE - NAME		

FIND NO	QTY REQD	PART OR IDENTIFYING NO	NOMENCLATURE OR DESCRIPTION	FSCM NO	DRAWING OR SPECIFICATION	MATERIAL OR NOTE
UNLESS OTHERWISE SPECIFIED DIMENSIONS ARE IN INCHES TOLERANCES ON						
2 PL DEC. 3 PL DEC. ANGLES			DR BY RLS 98/02/24	HARTMAN ELECTRICAL MANUFACTURING MANSFIELD, OHIO		
± .03 ± .010 ± 1°			CHK BY RS 98/02/24	CONTACTOR - 3 PST NO		
			ENGR FW 98/03/04	120 AMP., 400 HZ, 28 VDC COIL		
			MFG FW 98/03/03	093		
			RELEASE ✓	SIZE C	CODE IDENT 74063	DWG NO. DH-25CM
			CONTR NO.	SCALE NONE SHEET		
			GOVT APPVL			