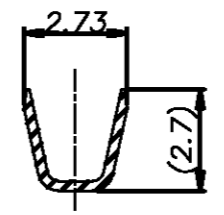
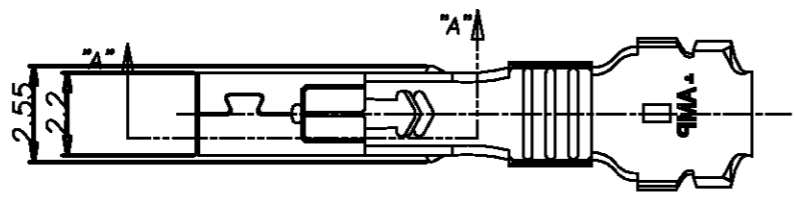


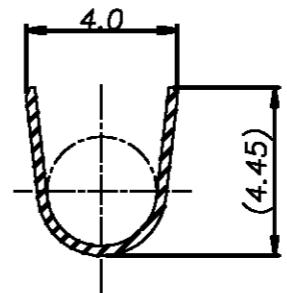
THIS DRAWING IS UNPUBLISHED. RELEASED FOR PUBLICATION

© COPYRIGHT BY TYCO ELECTRONICS CORPORATION. ALL RIGHTS RESERVED.

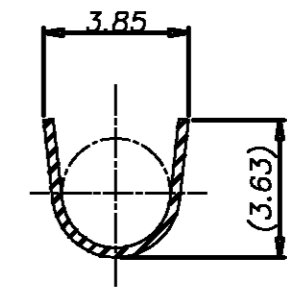
LOC	DIST	REVISIONS					
		P	LTR	DESCRIPTION	DATE	DWN	APVD
DS	-		A	RELEASED	28.MAR.'06	BH	JK



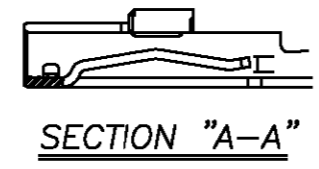
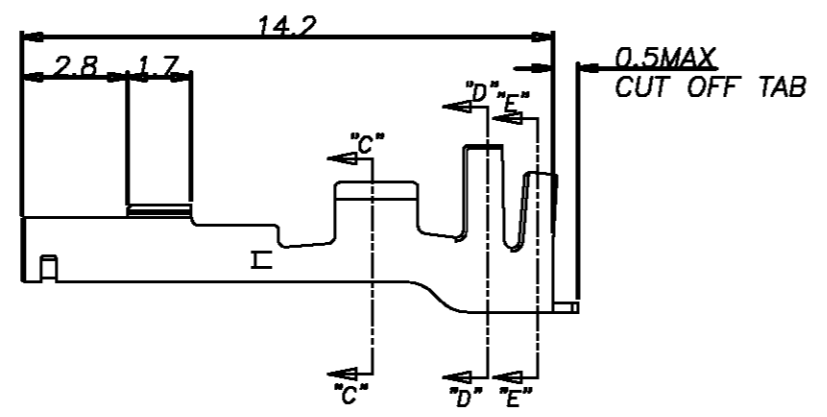
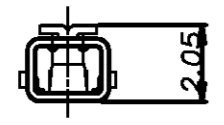
SECTION "C-C"



SECTION "D-D"



SECTION "E-E"



SECTION "A-A"

- NOTES
- 1.GENERAL TOLERANCE : 0.25
 - 2.MATERIAL : PRE-TIN COPPER ALLOY
 - 3.APPLICABLE WIRE :
WIRE RANGE : 0.5~1.25 mm² (AWG20~AWG16)
INSULATION DIA : ϕ 2.0~3.1 mm

1743729-1
PART NUMBER

<small>THIS DRAWING IS A CONTROLLED DOCUMENT FOR TYCO ELECTRONICS CORPORATION. IT IS SUBJECT TO CHANGE AND THE CONTROLLING ENGINEERING ORGANIZATION SHOULD BE CONTACTED FOR THE LATEST REVISION.</small>		DWN BH CHO CHK BW KANG APVD JK SONG PRODUCT SPEC 108-61082 APPLICATION SPEC - WEIGHT - CUSTOMER DRAWING				AMP KOREA, kyungsan, korea	
DIMENSIONS: MM 		TOLERANCES UNLESS OTHERWISE SPECIFIED: 0 PLC ± 1 PLC ± 2 PLC ± 3 PLC ± 4 PLC ± ANGLES ±		NAME FG TERMINAL		SIZE CAGE CODE DRAWING NO RESTRICTED TO A3 00779 C=1743729 -	
MATERIAL SEE NOTE		FINISH SEE NOTE		SCALE 5/1 SHEET 1 OF 1 REV A			