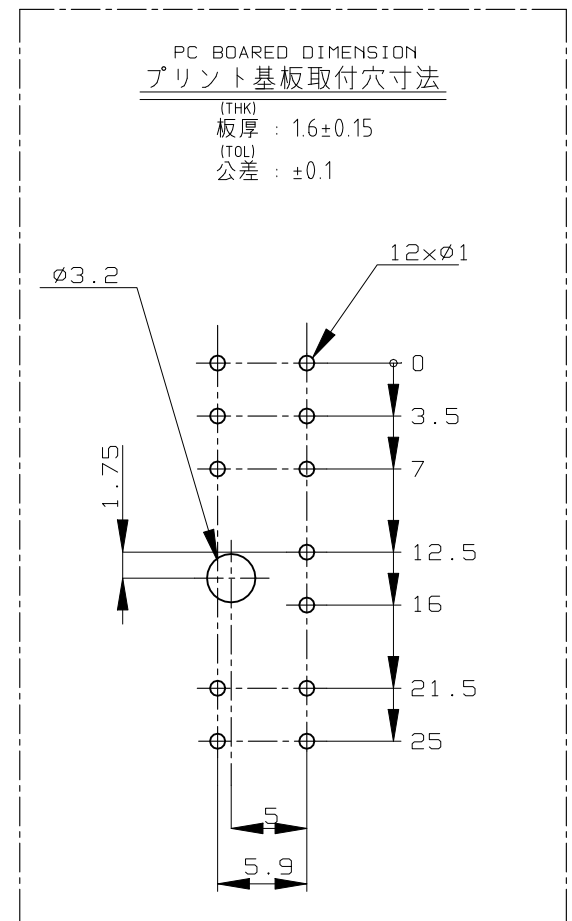
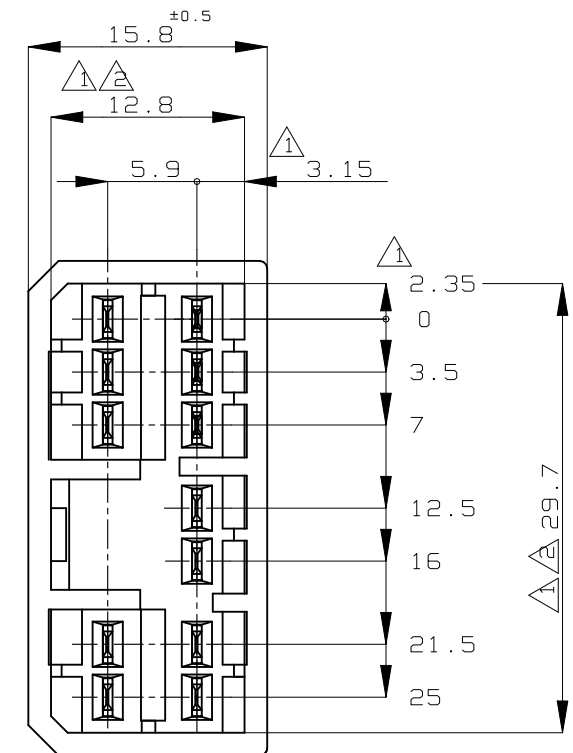
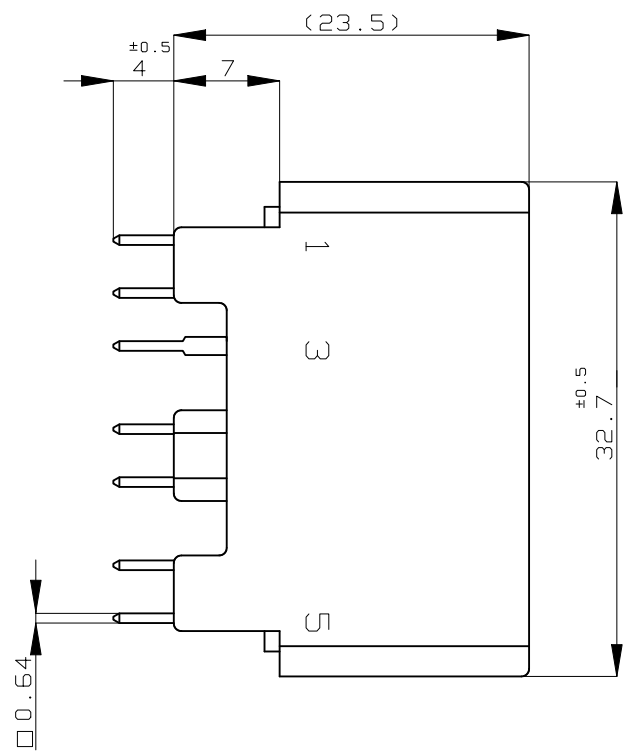
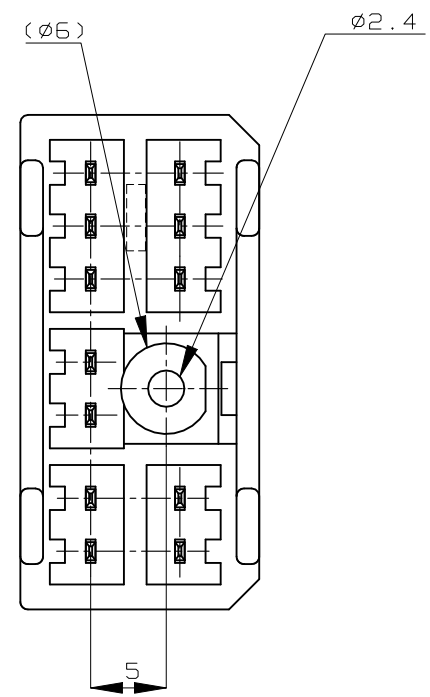


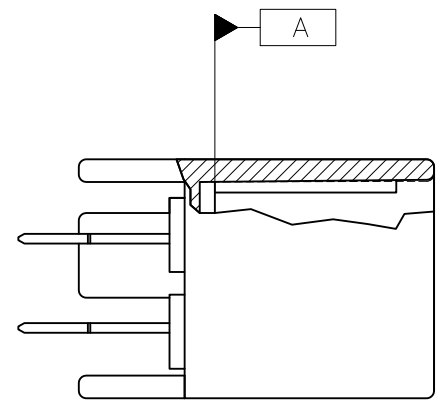
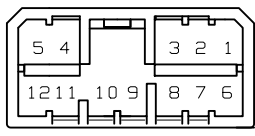
REVISIONS

P	LTR	DESCRIPTION	DATE	DWN	APVD
H5		REVISED PER ECR-22-154022	25NOV2022	RK	MT



NOTES :

- △ TO BE MEASURED BETWEEN [A] AND 2
- △ TO BE MATED WITH PLUG HSG SMOOTHLY
- 3 TO BE USE M3 TAPPING SCREW JIS B1115 OR 1122 (TYPE2 OR 4) BEFORE SOLDER (TIGHTENING TORQUE; 0.8N-m MAX)
- 4 APPLIED PLUG HSG P/N ; 173851
- △ CIRCUIT NUMBER



- 注 :
- △ [A] 面から2mmの範囲で測定
 - △ 相手ハウジングと所定の機能を満たして嵌合できること
 - 3. プリント基板への取付けは JIS-B1115 又は 1122, M3X6ナベ (2種又は4種) のタッピンネジで締付けた後ハンダ付けする (締付トルク; 0.8N-m以下)
 - 4. 嵌合相手ハウジング型番; 173851
 - △ 回路番号; 上図参照のこと

OBSOLETE	SELECTIVE TIN (MATTE)	SELECTIVE GOLD x 12	1~12	NATURAL 自然色	2-5174957-1
OBSOLETE	SELECTIVE-TIN	PRE-TIN x 12	-	NATURAL 自然色	3-174957-1
	TIN-LEAD	SELECTIVE GOLD x 12	1~12	NATURAL 自然色	2-174957-1
		PRE-TIN x 12	-	NATURAL 自然色	1-174957-1
	SELECTIVE TIN (MATTE)	SELECTIVE-TIN x 12 (BRIGHT)	-	BLACK 黒色	174957-3
SUPERSEDED	SELECTIVE-TIN	PRE-TIN x 12	-	BLACK 黒色	174957-2
	SOLDERING SIDE 半田付け部	CONTACT SIDE 接触部側		△ GOLD PLATED CIRCUIT NO. 金めっき回路番号	COLOR 色
					PART NUMBER 製品型番

THIS DRAWING IS A CONTROLLED DOCUMENT.

DIMENSIONS:	TOLERANCES UNLESS OTHERWISE SPECIFIED:
単位: 耗 mm	一般公差
	0 PLC ± -
	1 PLC ± -
	2 PLC ± -
	3 PLC ± -
	4 PLC ± -
	ANGLES ± -

GENERAL TOLERANCE
0<* < 10 : ±0.2
10<* < 30 : ±0.25
30<* < 100 : ±0.3
ANGLES : ±3°

MATERIAL 材料
 HOUSING : PBT
 CONTACT : BRASS

FINISH 仕上 SEE TABLE

DWN	M.KADOSAKI	120CT05
CHK	T.SHINOHARA	120CT05
APVD	K.BETSUI	120CT05
PRODUCT SPEC	製品規格	
APPLICATION SPEC	取付適用規格	
WEIGHT		



.070 SRS MLC
 12Pos. CAP HSG (W-B(V-TYPE))

SIZE	CAGE CODE	DRAWING NO 番号	RESTRICTED TO
A3	00779	C-174957	-

CUSTOMER DRAWING SCALE 尺度 2:1 SHEET 1 OF 1 REV H5