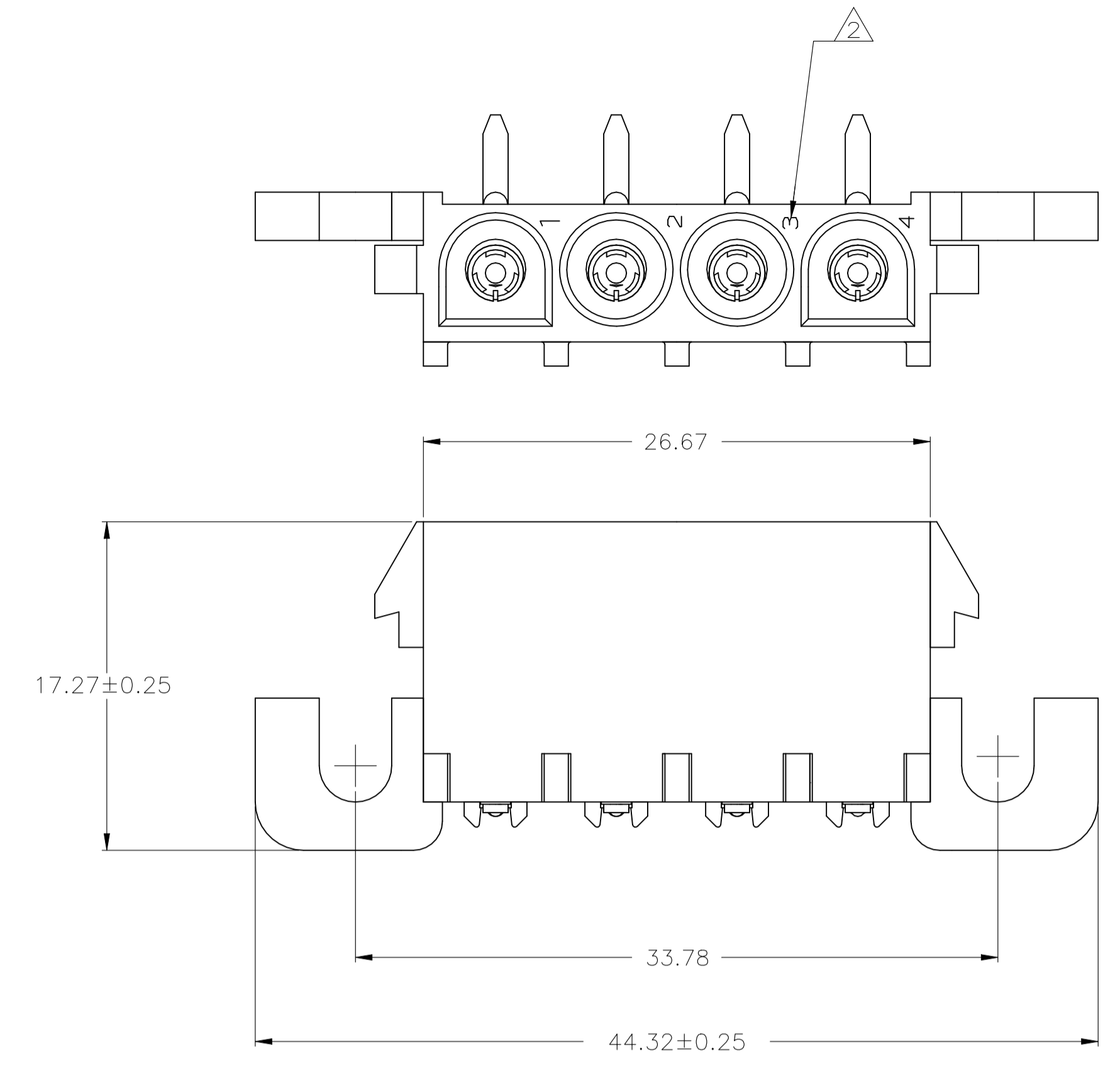
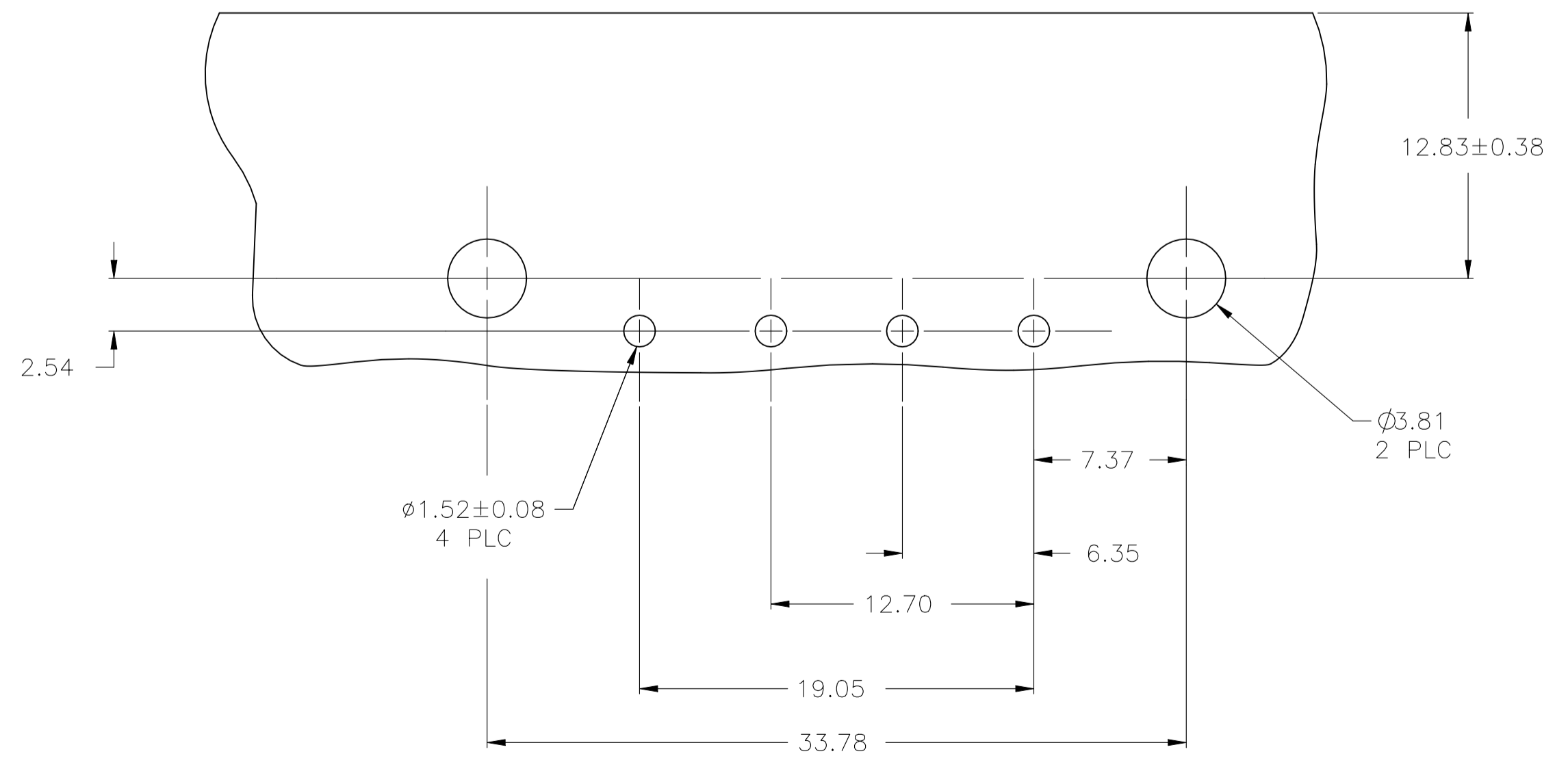
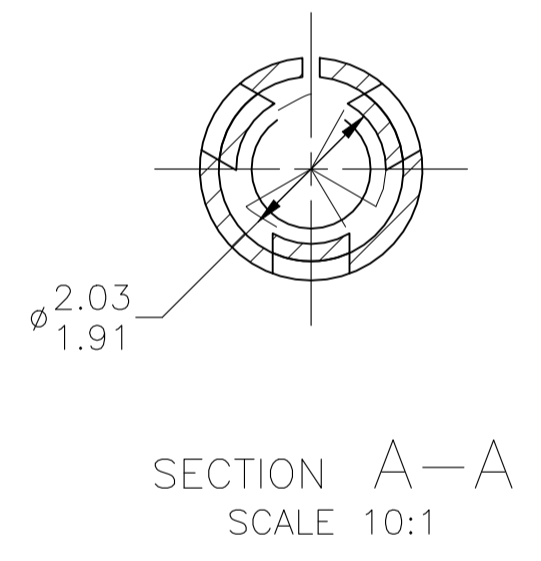
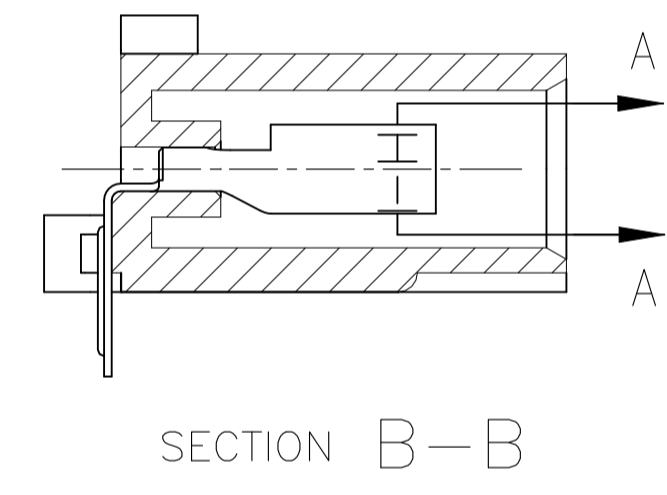
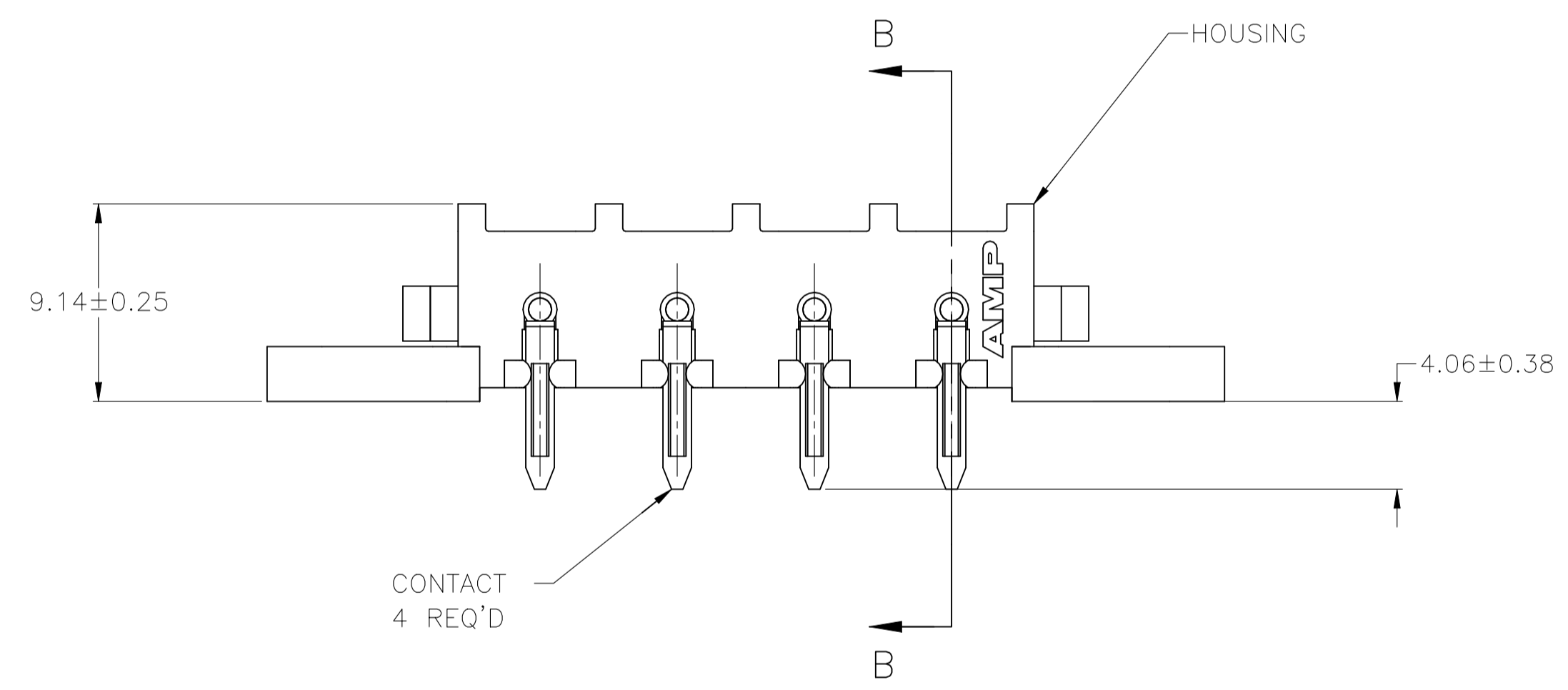


REVISIONS					
REV	DATE	DESCRIPTION	BY	CHK	APP'D
A1	02NOV2021	REVISED PER ECR-21-119230	SS	VS	



- 1 PARTS COMPLY WITH TE SOLDERABILITY SPECIFICATION 109-11-5.
- 2 CIRCUIT IDENTIFICATION CHARACTERS ARE ADJACENT TO THE INDICATED CAVITIES, BUT LOCATION AND ORIENTATION MAY BE DIFFER FROM PRINT.
- 3 FLAMMABILITY UL V-0 FOR THICKNESS 0.4, 0.45, 0.8, 1.6, AND 3.0 PER IEC 60695-11-10.
- 4 GLOW WIRE FLAMMABILITY (GWFI): 960°C FOR THICKNESS 0.45, 0.8, 1.6, AND 3.0 PER IEC 60695-2-12.
- 5 GLOW WIRE IGNITION (GWIT): 825°C FOR THICKNESS 0.45, 800°C FOR THICKNESS 0.8, 775°C FOR THICKNESS 1.6 AND 3.0 PER IEC 60695-2-13.
- 6 DIMENSIONS SHOWN REPRESENT PRODUCT IN DRY CONDITION. ADDITIONAL 2% GROWTH DUE TO END USE LOCATION MOISTURE ABSORPTION MAY OCCUR AND SHOULD BE ACCOUNTED FOR.



RECOMMENDED MOUNTING HOLE PATTERN FOR 1.57 THICK P.C. BOARD

MM	IN	MM	IN
3.81	.150		
2.54	.100		
2.03	.080	44.32	1.745
1.91	.075	33.78	1.330
1.57	.062	26.67	1.050
1.52	.060	19.05	.750
1.27	.050	17.27	.680
0.38	.015	12.83	.505
0.25	.010	12.70	.500
0.13	.005	9.14	.360
0.08	.003	7.37	.290
.00127	.000050	6.35	.250
.00076	.000030	4.06	.160
MM	IN	MM	IN

CONVERSION TABLE

PH BRZ,TIN		NYLON, UL V-0 GW	1969806-1
CONTACT		HOUSING	PART NUMBER

THIS DRAWING IS A CONTROLLED DOCUMENT.		DIN: RASVESH WARAD 01JAN2016	TE Connectivity
DIMENSIONS: mm		CHK: WICKES, EVAN 01JAN2016	
TOLERANCES UNLESS OTHERWISE SPECIFIED:		APP'D: WICKES, EVAN 01JAN2016	NAME: SOCKET HEADER ASSEMBLY, RIGHT ANGLE MOUNT, 4 POSITION, UNIVERSAL MATE-N-LOK(TM)
0. PLC ± - 1. PLC ± - 2. PLC ± 0.13 3. PLC ± - 4. PLC ± - ANGLES ± -		APPLICATION SPEC	SIZE: A1
MATERIAL: SEE TABLE	FINISH: SEE TABLE	WEIGHT: 0.000000	DRAWING NO: 1969806
CUSTOMER DRAWING		SCALE: 4:1	SHEET 1 OF 1 REV A1