

C. Westoby 12-6-91  
APPROVED/DATE  
REV 1

SAFETY ORGANIZATION(S).

THIS FILTER HAS BEEN FORMALLY RECOGNIZED, CERTIFIED OR APPROVED BY THE LISTED AGENCY. THEREFORE, ALL TEST/REQUIREMENTS SPECIFIED IN THE LATEST REVISION OF THE FOLLOWING AGENCY STANDARDS HAVE BEEN MET.

UL RECOGNIZED  
CSA 22.2, NO. 0, 0, 4, 8  
VDE APPROVED  
SENKO APPROVED

OPERATING SPECIFICATIONS.

LINE VOLTAGE/CURRENT,  
LINE FREQUENCY,  
MAX. LEAKAGE CURRENT, EACH  
LINE TO GROUND  
OPERATING AMBIENT TEMP. RANGE,  
IN AN AMBIENT,  $T_a$ , HIGHER THAN 40°C, THE MAXIMUM OPERATING CURRENT,  $I_o$ , IS AS FOLLOWS,  
 $I_o = I_r \sqrt{\frac{85-T_a}{45}}$

UL 1283  
1 AMP., 120/250 VAC  
50-60Hz  
.20mA at 120V 60 Hz  
.33 mA at 250V 50 Hz  
-10°C TO +40°C @ RATED CURRENT,  $I_r$   
-40°C TO +85°C  
21 DAYS @ 40°C 95% RH  
6 TIMES RATED CURRENT FOR 8 SECONDS

RELIABILITY SPECIFICATIONS.

STORAGE TEMPERATURE,  
HUMIDITY,  
CURRENT OVERLOAD TEST,  
TEST SPECIFICATIONS.

INDUCTANCE,  
CAPACITANCE, (MEASURED @ 1 KHZ, 0.25 VAC MAX., 25°C ±1°C)  
LINE TO GROUND,  
LINE TO LINE,  
DISCHARGE RESISTOR,  
LINE/GROUND AND LINE/LINE  
INSULATION RESISTANCE  
(W/O DISCHARGE RESISTOR)

RECOMMENDED RECEIVING INSPECTION HIPOIT.

LINES TO GROUND,  
LINE TO LINE,  
2250 VDC FOR 1 MINUTE  
1450 VDC FOR 1 MINUTE

FILTER APPROVAL.

THE BEST WAY TO SELECT AND QUALIFY A FILTER IS FOR YOUR ENGINEERING TO TEST THE UNIT IN YOUR EQUIPMENT.

TOLERANCE EXCEPT AS NOTED

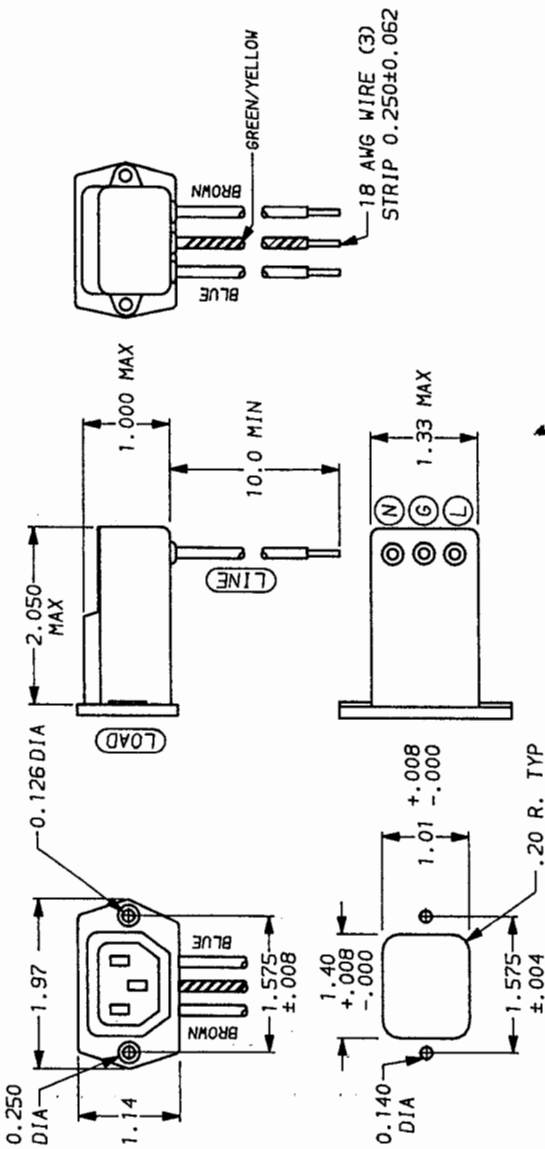
DECIMAL, .XXX .XX .X ANGLES  
ENGLISH, ±.020 .X ANGLES  
METRIC, ±

MATERIAL:

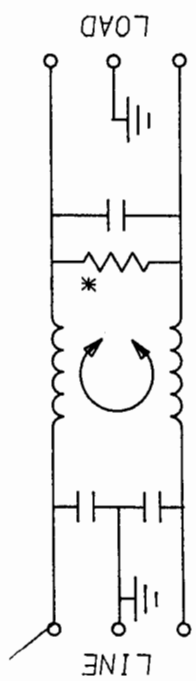
AS SUPPLIED

FINISH:

AS SUPPLIED



**THIS FILTER LINE AND LOAD ARE REVERSED; THE SOCKET IS LOAD.**



50Ω - 50m (MINIMUM) INSERTION LOSS										
FREQUENCY MHZ	.01	.05	.1	.15	.5	1	3	5	10	30
COMMON	12	23	28	32	41	47	47	47	47	40
DIFF. dB	—	—	1	3	14	23	41	47	50	44

This document is proprietary to CORCOM INC. and is not to be reproduced nor used for manufacturing purposes except on CORCOM's order or prior written consent.



ACCESSORY OUTLET FILTER

SCALE DATE 9-20-91  
REV. NO. 1 EBF4.01  
REV. NO. 1 EBF4.01

\*RESISTOR ADDED TO PRODUCT BUILT AFTER 3-30-92 (9212)