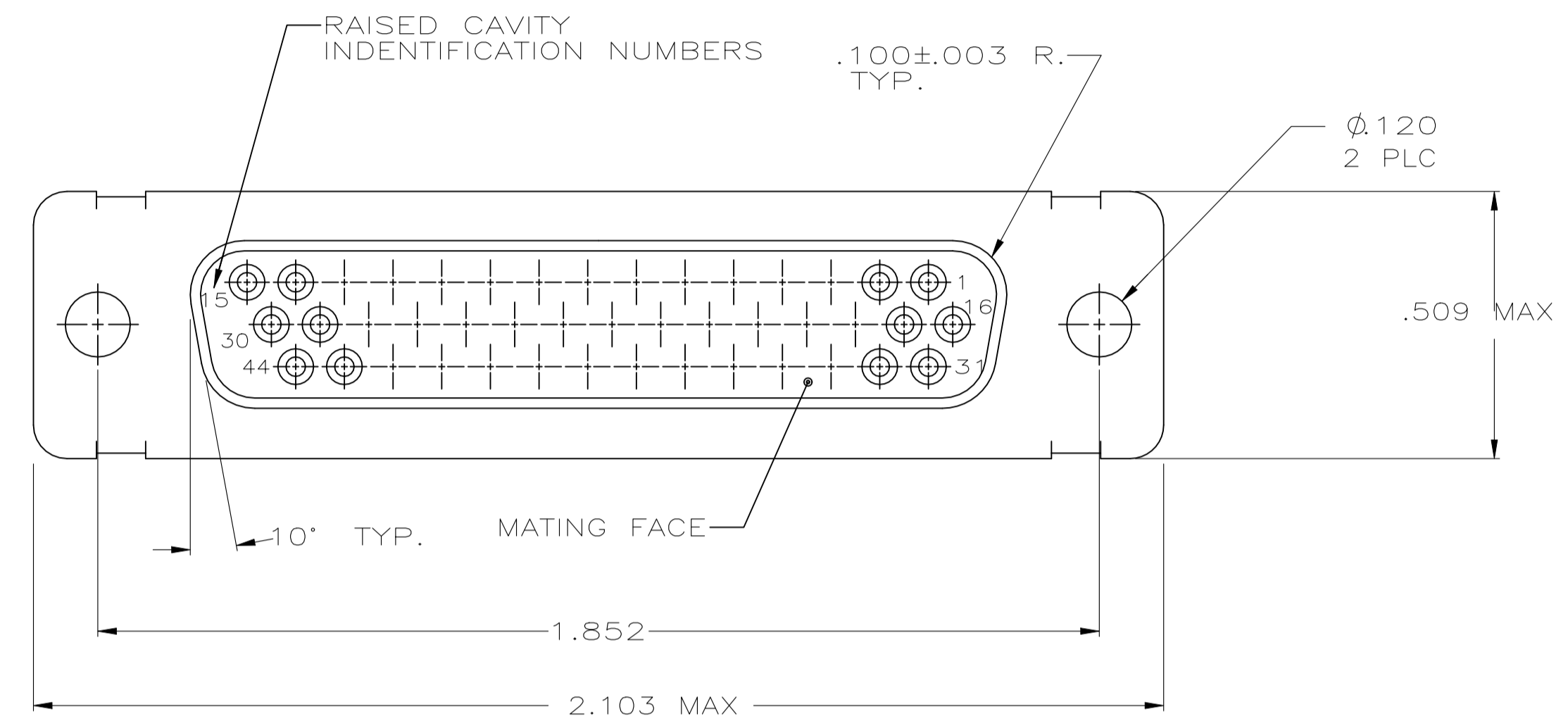


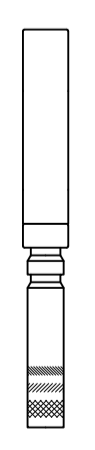
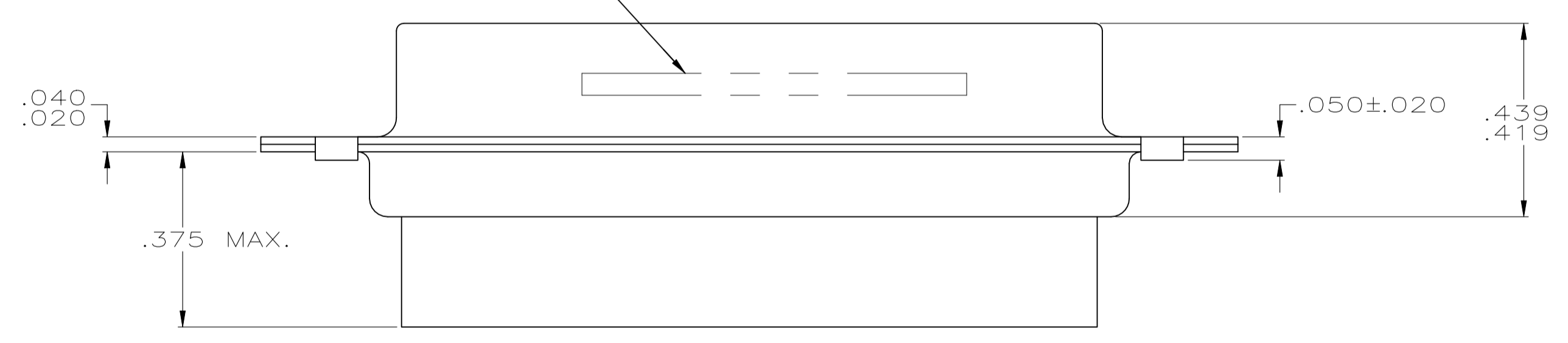
REVISIONS					
P	LTR	DESCRIPTION	DATE	DN	APVD
J		REVISED PER ECN-24-272187	24JUN2024	PE	DS

WARNING - THIS DOCUMENT CONTAINS TECHNOLOGY WHOSE EXPORT IS RESTRICTED BY THE EXPORT ADMINISTRATION REGULATIONS ("EAR") PURSUANT TO 15 C.F.R. PARTS 730-774. VIOLATIONS OF THE EAR ARE SUBJECT TO SEVERE CRIMINAL PENALTIES UNDER THE EXPORT CONTROL REFORM ACT, AS AMENDED (TITLE 50, U.S.C., SEC. 4801, ET SEQ.).

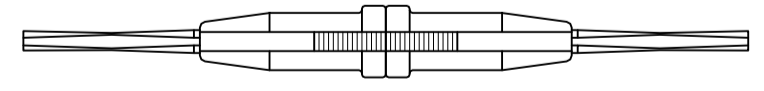


1. THIS RCPT. IS DESIGNED TO CONFORM TO THE LATEST ISSUE OF MIL-C-24308. EXCEPT AS NOTED HEREIN.
 2. MAX WIRE INSUL TO BE USED WITH THIS RCPT IS .054 DIA
 3. METAL RETENTION CLIPS ARE INCLUDED IN INSERTS
 4. THIS RCPT. WILL ACCEPT SIZE 22 SOCKET CONTACT M 39029/57-354 OR ANY AMP HDD-22 SOCKET CONTACT
- △5 DIALYL PHTHALATE PER MIL-M-14, TYPE SDG-F
COLOR: BLUE
OR POLYPHENYLENE SULFIDE(PPS)
PER MIL-M24519, TYPE GST-40F
COLOR: BLACK
 - △6 STEEL PER ASTM-A-109 OR EQUIVALENT.
 - △7 CADMIUM PER QQ-P-416, TYPE II, CLASS 2
OVER COPPER PER MIL-C-14550, CLASS 4.

MILITARY PART NUMBER MARKED (NEAR SIDE)
MFG'S NAME, BRAND OR LOGO, MFG'S PART NUMBER
AND DATE CODE MARKED (FAR SIDE)



SOCKET CONTACT
PART NO 204351-1
QTY 44
SUPPLIED WITH CONNECTOR
BUT NOT INSTALLED



INSERTION/EXTRACTION TOOL
PART NO 91067-1
SUPPLIED WITH CONNECTOR
(-3 ONLY)

204516-3 OBSOLETE	-	△5	△6	△7	M24308/2-19F	M24308/2-19F	204516-3
-	-	△5	△6	△7	M24308/2-13F	M24308/2-13F	204516-2
REMARKS	INSERT MATERIAL	SHELL MATERIAL	SHELL FINISH	MILITARY PART NO ON PACKAGE	MILITARY PART NO ON PACKAGE	PART NO.	

THIS DRAWING IS A CONTROLLED DOCUMENT.

DIMENSIONS: INCHES	TOLERANCES UNLESS OTHERWISE SPECIFIED:	DIN 10-02-95	J.A. BAKER
0 PLC ± -	1 PLC ± -	APVD	NAME
2 PLC ± -	3 PLC ± .005	PRODUCT SPEC	TE Connectivity
4 PLC ± -	ANGLES ± -	APPLICATION SPEC	KIT HDD SERIES
MATERIAL SEE TABLE	FINISH SEE CALLOUTS	WEIGHT	RESTRICTED TO
CUSTOMER DRAWING		SCALE 4:1	SHEET 1 of 1 REV J

SIZE: A1 CAGE CODE: 00779 DRAWING NO: 204516