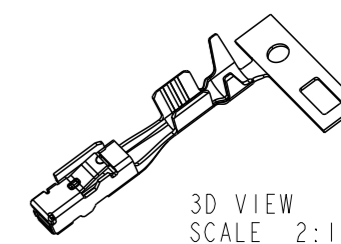
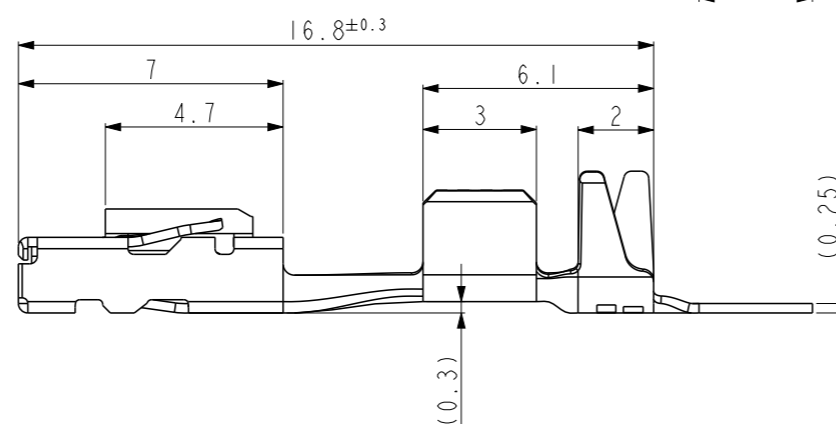
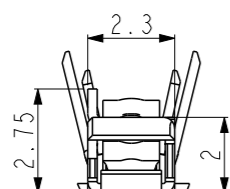
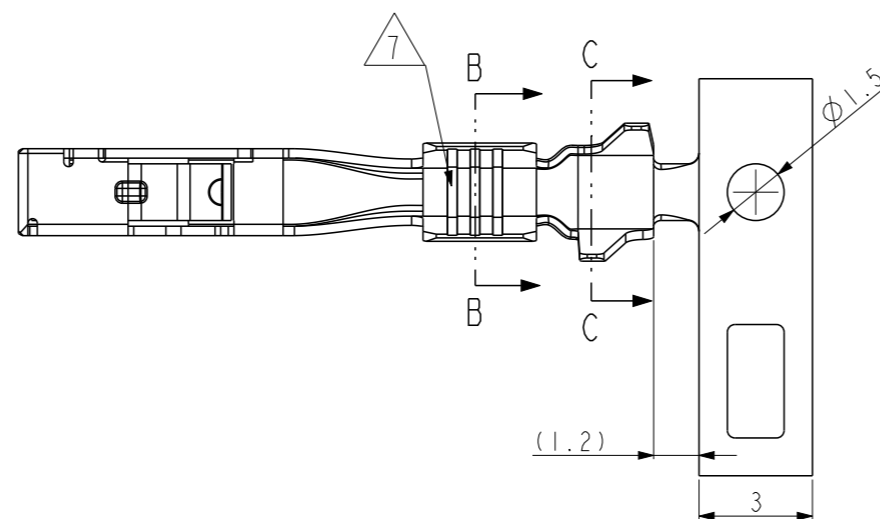


LOC DS

DIST -

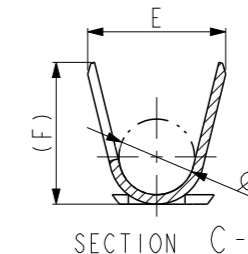
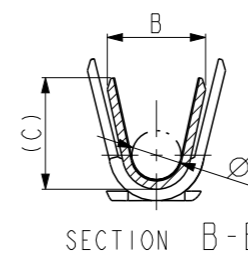
REVISIONS

P	LTR	DESCRIPTION	DATE	DWN	APVD
	A5	REVISED (ECR-23-167987)	02.MAR'23	JW	KT

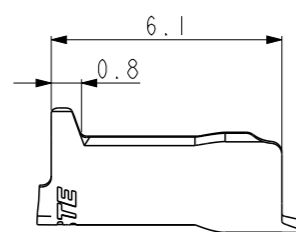
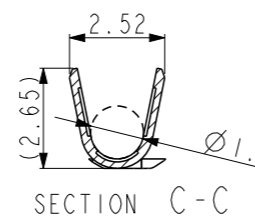
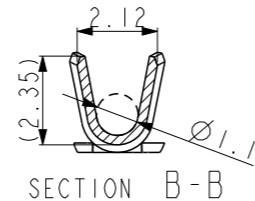
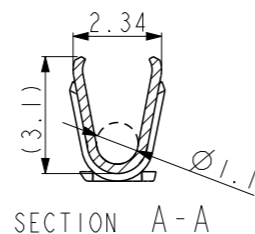
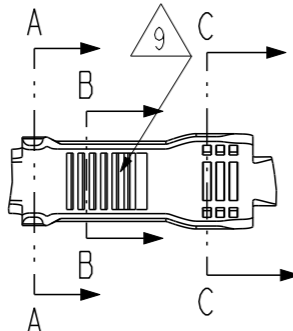
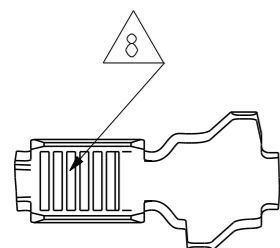


NOTES;

- 1 MATERIAL: CuNiSi ALLOY
- 2 FINISH: PRE-TIN PLATED
- 3. GENERAL TOLERANCE: ±0.2, ±3°
- 4. THIS PRODUCT IS DESIGNED TO BE COMPATIBLE WITH UN-SEALED APPLICATIONS.
- 5. APPLICATOR FEED: 10.0
- 6. MATING TAB THICKNESS: 0.63±0.03
- 7 THREE SERRATIONS CENTERED IN WIRE BARREL
- 8 SEVEN SERRATIONS CENTERED IN WIRE BARREL
- 9 COMBINED BARREL AND SEVEN SERRATIONS



PRELIMINARY - NOT RELEASED YET



7	(2.9)	2.8	Ø1.7	(2.3)	2.2	Ø1.1	1.4 - 1.9	0.5 - 0.75SQ	SELECTIVE GOLD	1	1	060 REC GOLD (S)	1-2109006-2
7	(2.45)	2.4	Ø1.3	(1.7)	1.7	Ø0.8	1.0 - 1.5	0.22 - 0.35SQ	SELECTIVE GOLD	1	1	060 REC GOLD (SS)	1-2109006-1
8	(3.75)	3.65	Ø2.0	(2.95)	2.6	Ø1.3	Ø1.8	AL 1.25SQ	2	1	1	AL 060 REC (M)	8-2109006-3
8	(2.9)	2.8	Ø1.7	(2.3)	2.2	Ø1.1	Ø1.4	AL 0.75SQ	2	1	1	AL 060 RECEPT (S)	8-2109006-2
9	(2.65)	2.52	Ø1.4	(2.35)	2.12	Ø1.1	Ø1.4	AL 0.75SQ	2	2	1	AL 060 RECEPT	9-2109006-2
7	(3.75)	3.65	Ø2.0	(2.95)	2.6	Ø1.3	1.8 - 2.4	0.85 - 1.25SQ	2	1	1	060 RECEPT (M)	2109006-3
7	(2.9)	2.8	Ø1.7	(2.3)	2.2	Ø1.1	1.4 - 1.9	0.5 - 0.75SQ	2	1	1	060 RECEPT (S)	2109006-2
7	(2.45)	2.4	Ø1.3	(1.7)	1.7	Ø0.8	1.0 - 1.5	0.22 - 0.35SQ	2	1	1	060 RECEPT (SS)	2109006-1
SHAPE	(F)	E	ØD	(C)	B	ØA	INSUL RANGE	WIRE RANGE	FINISH	MATERIAL		DESCRIPTION	PART NO.

THIS DRAWING IS A CONTROLLED DOCUMENT.

DIMENSIONS:	TOLERANCES UNLESS OTHERWISE SPECIFIED:
mm	0 PLC ±
	1 PLC ±
	2 PLC ±
	3 PLC ±
	4 PLC ±
	ANGLES ±
MATERIAL	FINISH
1	2

DWN	KT JUNG
CHK	KT LIM
APVD	HG CHO
PRODUCT SPEC	108-61116
APPLICATION SPEC	114-61036
WEIGHT	-
CUSTOMER DRAWING	



.060 RECEPT. CONTACTS

NAME			
SIZE	CAGE CODE	DRAWING NO	RESTRICTED TO
A3	00779	C-2109006	-
SCALE	SHEET	OF	REV
5:1	1	1	A5

MISSING DIMENSIONS ARE SAME WITH THREE SERRATIONS