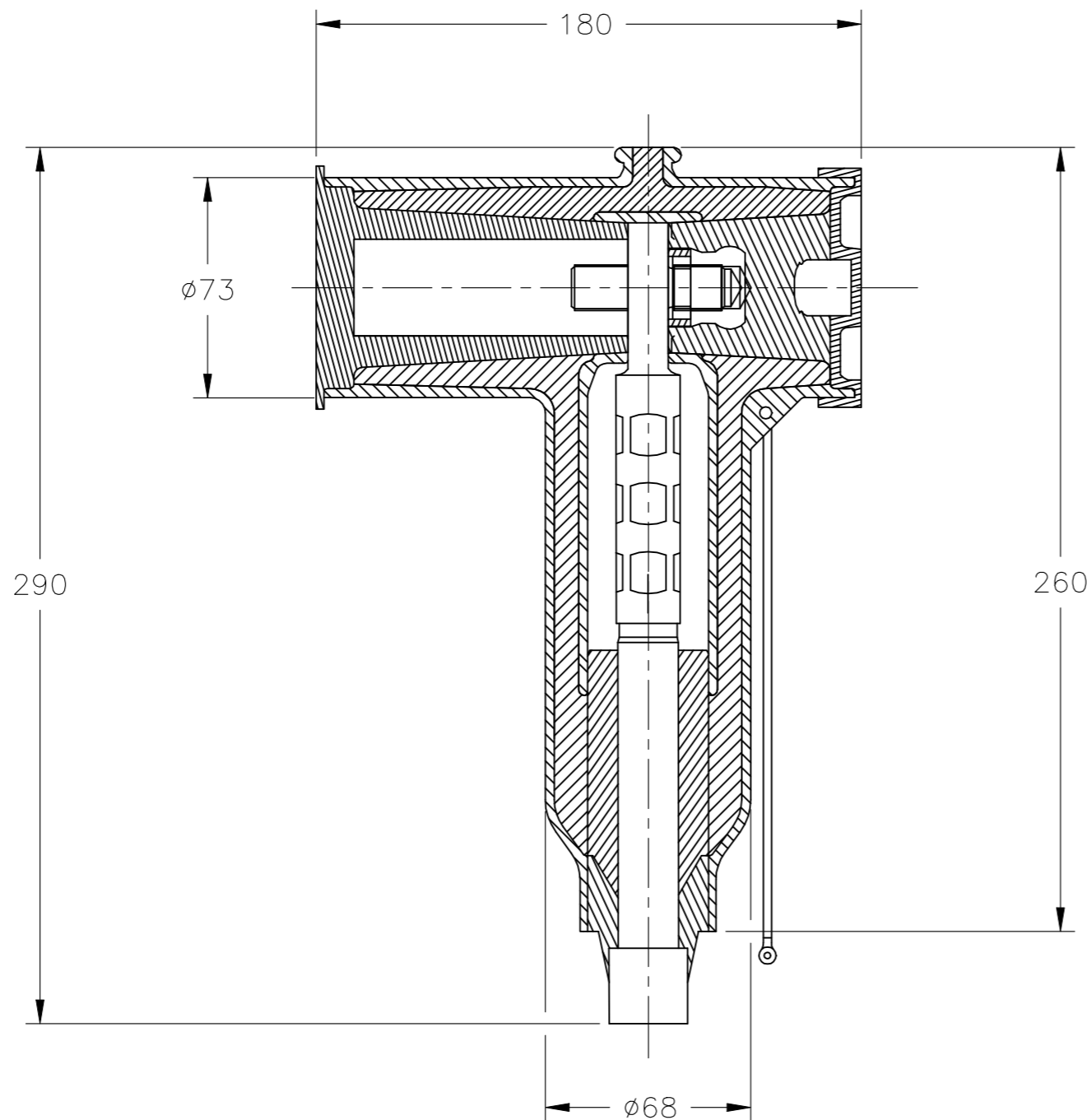



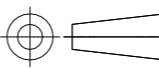
REVISIONS

P	LTR	DESCRIPTION	DATE	DWN	APVD
1		NEW DRAWING	18MAY2017	MX	JW



注: 可与EN50180/50181 DIN47636
标准套管、母排等连接.

系统最大额定电压	24kV
额定电流	800A
雷电冲击 (BIL)	125kV
1.73U0局部放电	<10 pC
耐受交流电压, 5分钟	54kV

THIS DRAWING IS A CONTROLLED DOCUMENT.		DWN MARTIN XUE 18MAY2017	 TE Connectivity			
DIMENSIONS: mm		CHK YANG WEIJIA 18MAY2017				
TOLERANCES UNLESS OTHERWISE SPECIFIED:		APVD JANE WU 18MAY2017	NAME MVCA-ELBC-824-SC 800A 24KV			
		PRODUCT SPEC -	APPLICATION SPEC -			
MATERIAL -		FINISH -	SIZE A3	CAGE CODE 00779	DRAWING NO C-2259362	RESTRICTED TO -
CUSTOMER DRAWING			SCALE 1:2	SHEET 1 OF 1	REV 1	