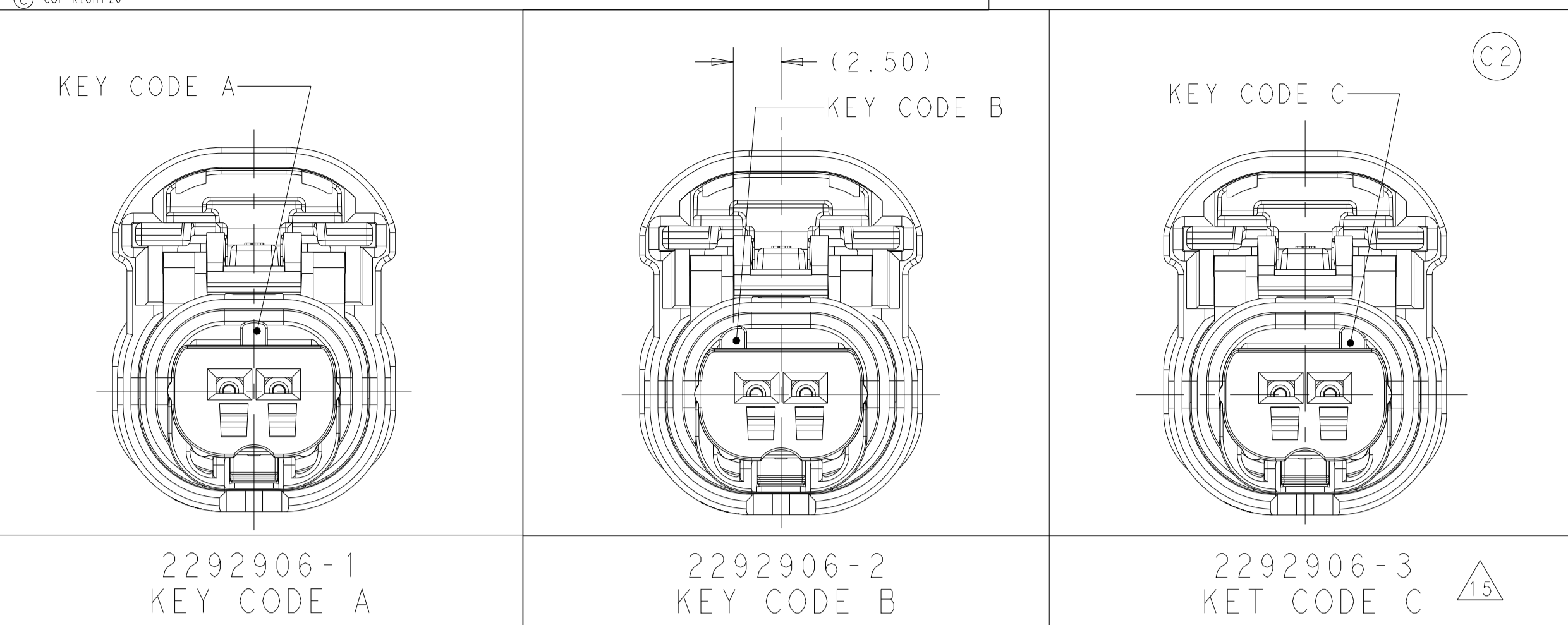
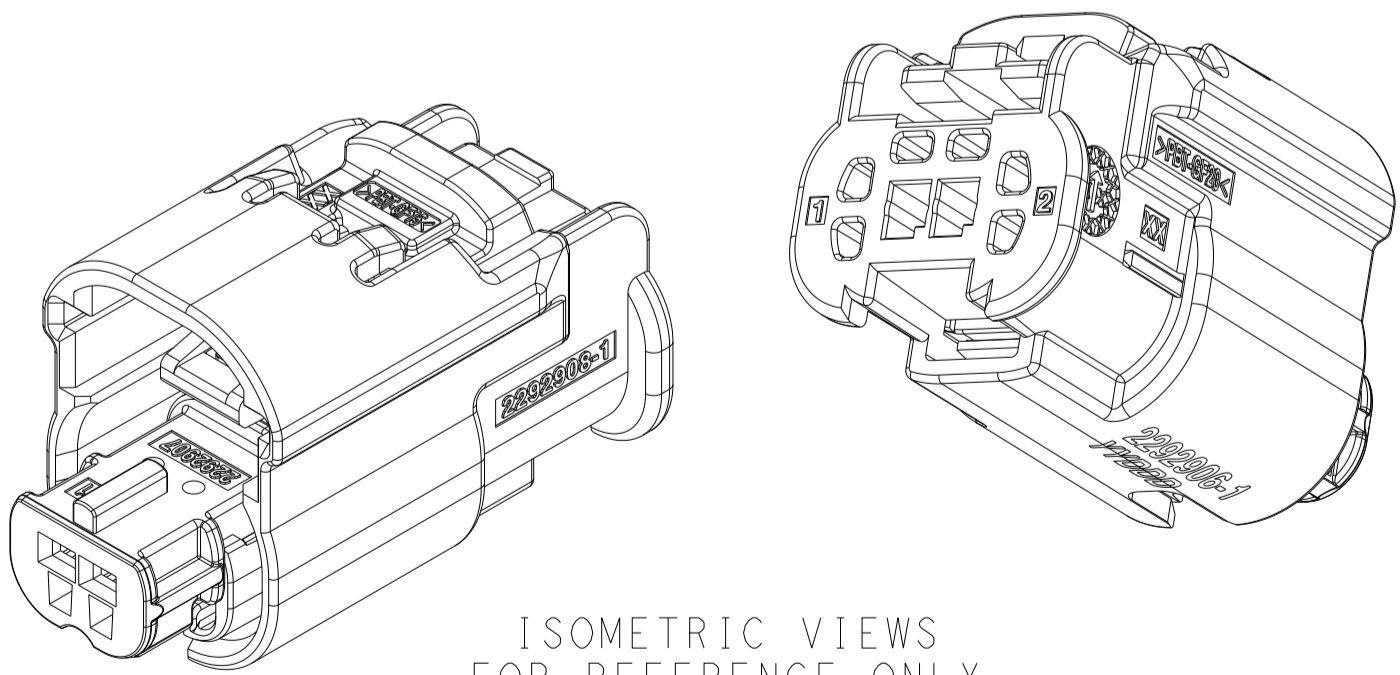
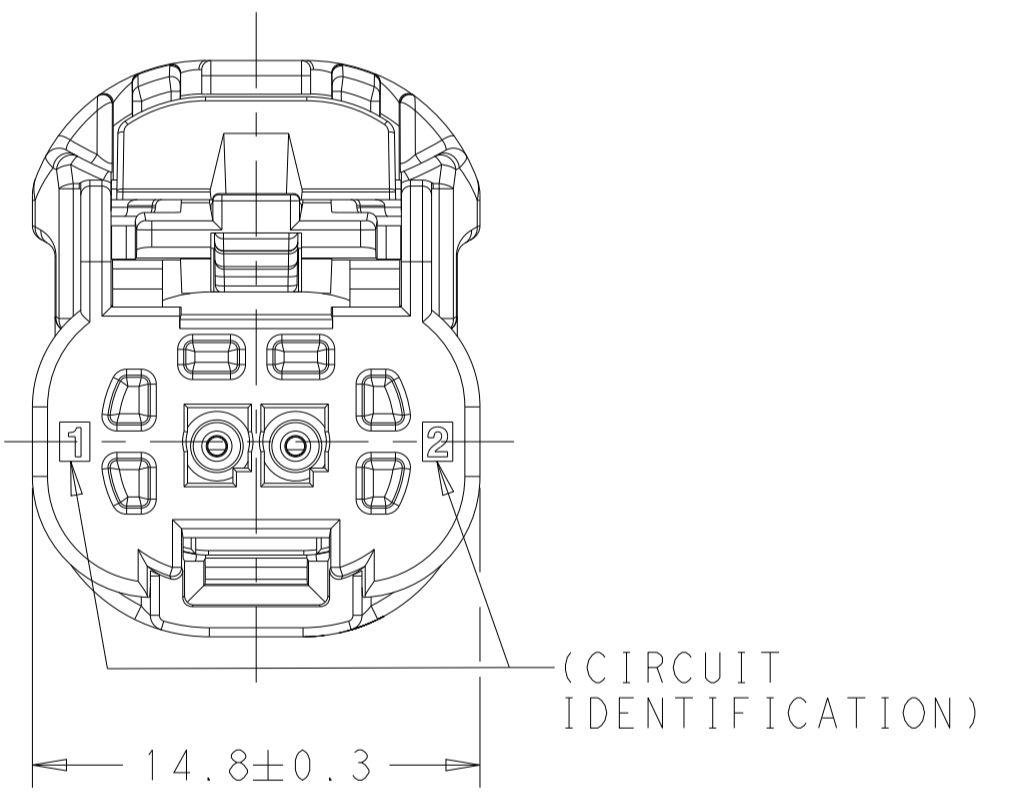
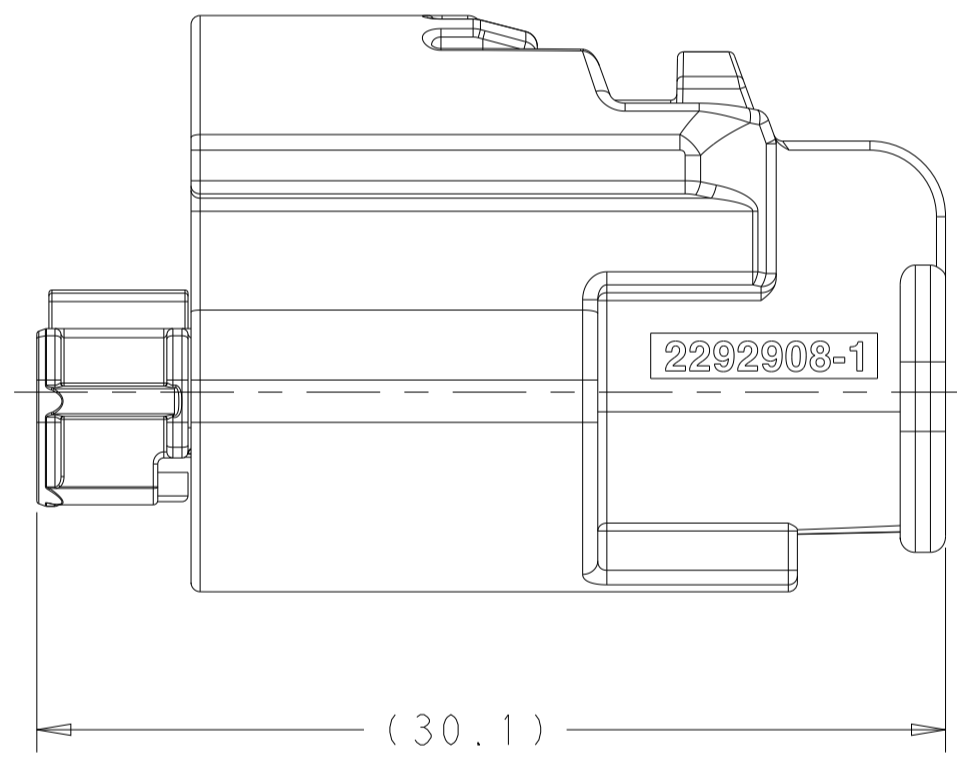
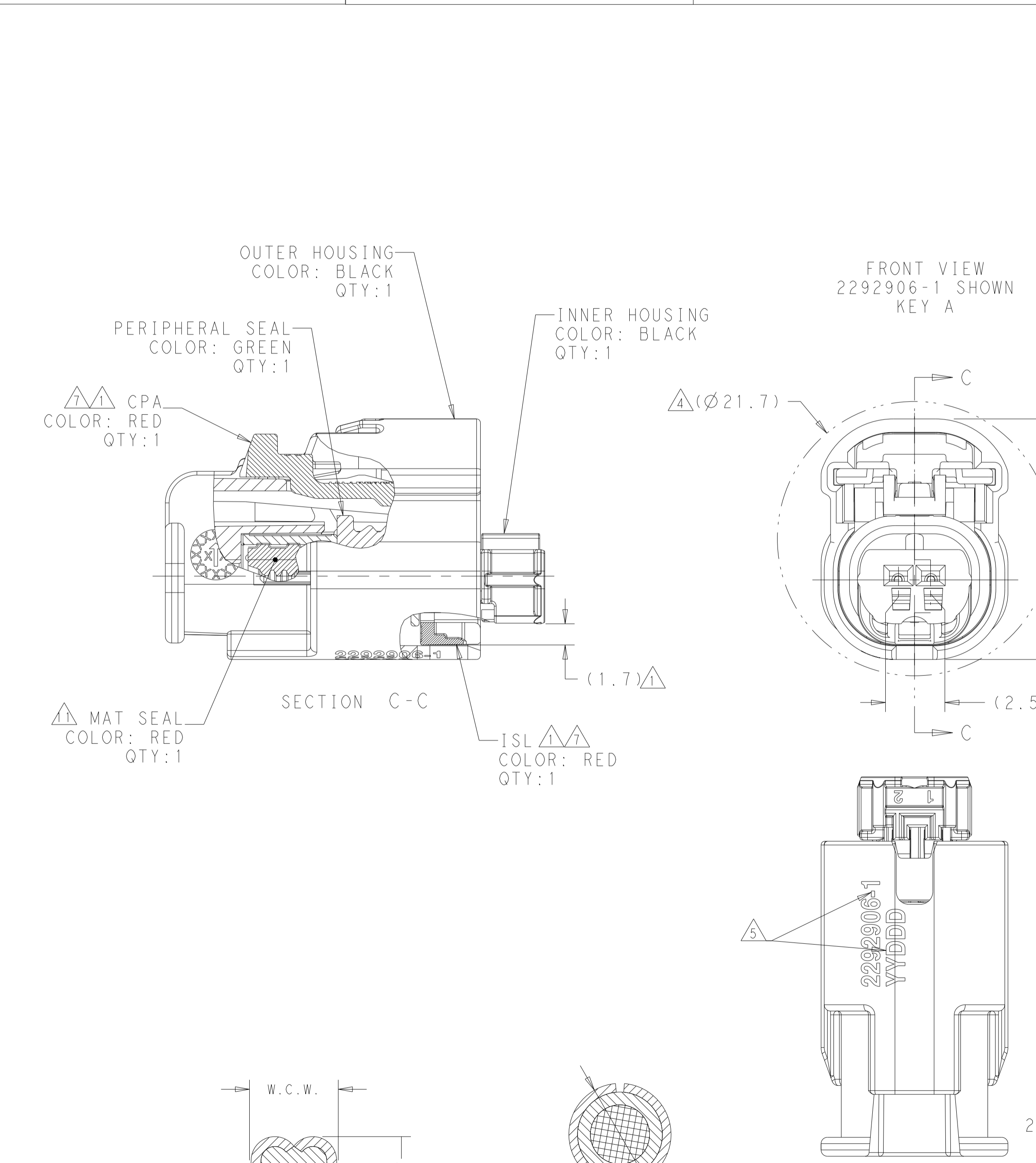


REVISIONS					
P	LTN	DESCRIPTION	DATE	OWN	APVD
B1		REVISED PER ECO-20-001920	22JAN2020	NRS	NRS
C		REVISED PER ECN-22-160264	21JUN2022	FC	CB
C1		REVISED PER ECN-22-181824	19SEP2022	GB	BC
C2		REVISED PER ECN-24-253432	30JAN2024	PS	CB

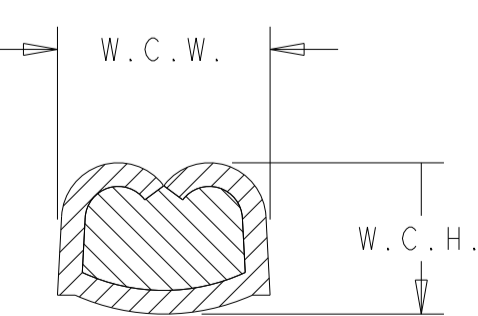


NOTES:

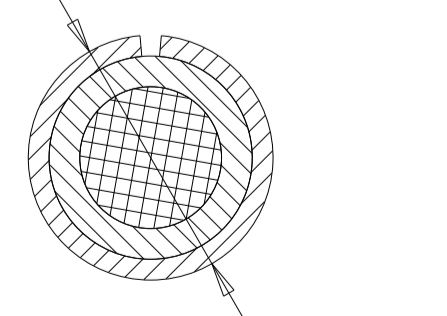
- 1. ISL AND CPA (OPTIONAL) ARE SHIPPED IN THEIR PRE-LATCHED POSITIONS.
- 2. TERMINALS SOLD SEPARATELY. FOR USE WITH TE MCON 1.2mm CLEAN BODY STANDARD RECEPTACLE CONTACT. SEE TABLE.
- 3. APPLICABLE INTERFACE DRAWINGS : TE 2295114.
- 4. MINIMUM FEED-THROUGH CONDITION WITH 1.0mm CLEARANCE ALL AROUND
- 5. TE PART NUMBER AND DATE CODE (YY = TWO DIGIT YEAR, JJJ = 3 DIGIT JULIAN DAY. MARKED IN APPROX. AREA SHOWN.
- 6. FOR OPTIONAL TERMINAL CAVITY BLOCKING, REFER TO INSTRUCTION SHEET 408-32256 OR CONTACT TE SALES REPRESENTATIVE OR CUSTOMER SERVICE.
- 7. SEE INSTRUCTION SHEET 408-32256 FOR CONNECTOR SERVICE AND ISL OPERATION
- 8. PRIMARY LOCK TERMINAL RETENTION FORCE 25N MINIMUM.
- 9. CONTACT PLATING IS APPLICATION DEPENDENT, CONTACT TE SALES REPRESENTATIVE OR CUSTOMER SERVICE FOR DETAILS
- 10. FOR WIRE CRIMP DETAILS, SEE TE APPLICATION SPECIFICATION 114-18464.
- 11. WIRE INSULATION DIAMETER RANGE: Ø1.22-2.1.
- 12. CONNECTOR SHOWN CAN BE USED WITH THE FOLLOWING WIRE DRESS COVERS:
STRAIGHT EXIT: TE PN 2272168-1
OR RIGHT ANGLE EXIT: TE PN 2272169-1
WIRE DRESS COVERS ARE PURCHASED SEPARATELY.
- 13. CONNECTOR SHOWN MATES WITH 2P CAP: 2292937-1 (KEY A) OR 2292937-2 (KEY B).
- 14. INGRESS PROTECTION LEVEL FOR WIRE DIA 1.22-1.55 IS EQUAL TO IP6K7 STANDARD AND FOR 1.55-2.1 TO USCAR2 STANDARD.



ISOMETRIC VIEWS FOR REFERENCE ONLY SCALE 3:1



WIRE CRIMP DIMENSIONS



INSULATION CRIMP DIMENSIONS

125°C	9	1670144 0.50mm ² - 0.75mm ² (INCLUDES #20 AWG)	10	10	(2.05)
MAX TEMP	TERMINAL PLATING	FEMALE TERMINAL P/N WIRE SIZE	W.C.H	W.C.W	I.C.D
		1534594 0.25mm ² - 0.35mm ² (INCLUDES #22 AWG)			(1.85)

KEY CODE "B"	2292906-2
KEY CODE "A"	2292906-1
KEY CONFIGURATION	PART NUMBER
TE TE Connectivity	
NAME: PLUG ASSEMBLY, SEALED, 2 POSITION	
SIZE: A1	CAGE CODE: -
DRAWING NO: C=2292906	RESTRICTED TO: -
WEIGHT: 4.5 g	SCALE: 5:1
CUSTOMER DRAWING	SHEET 1 OF 1
	REV: C2