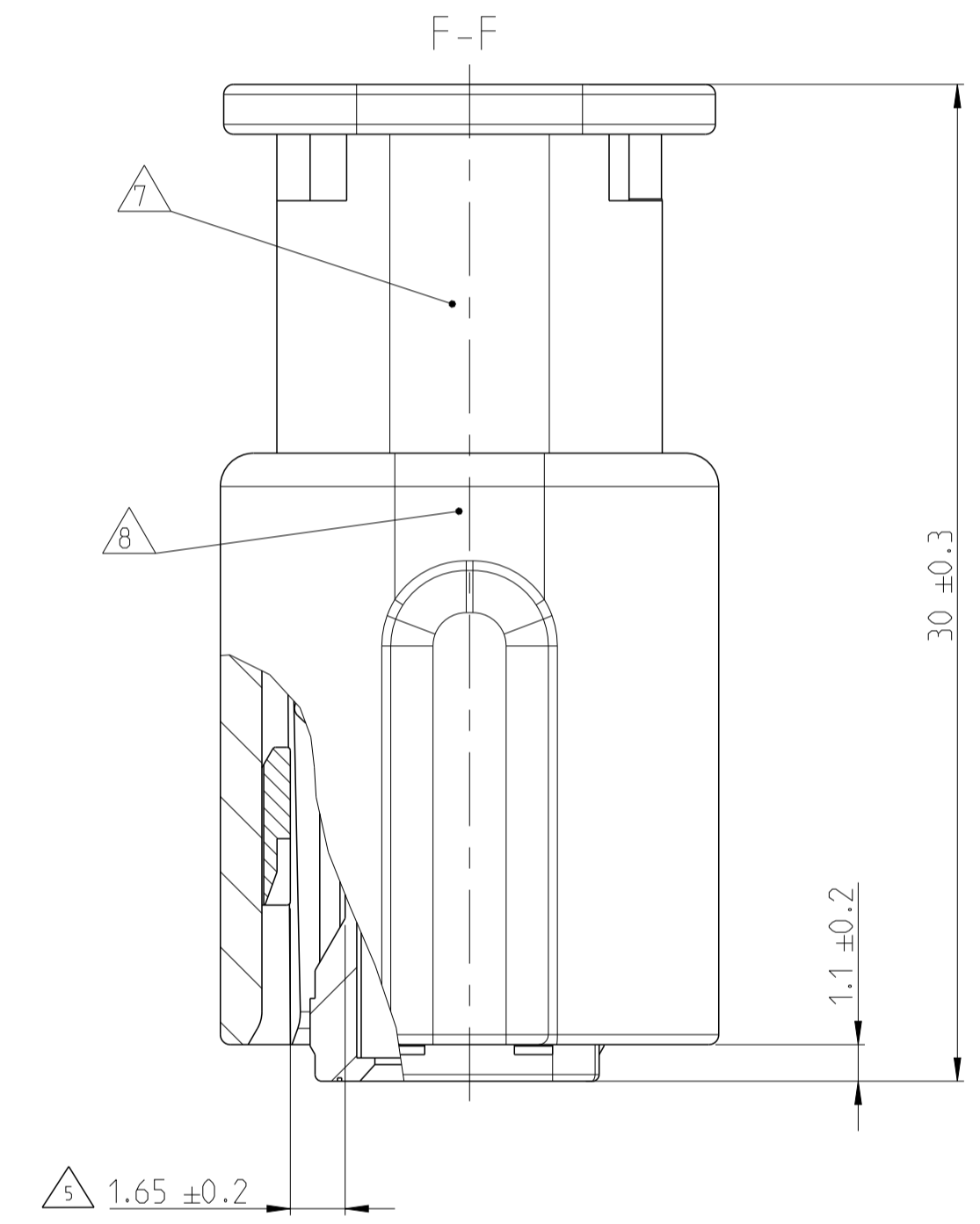
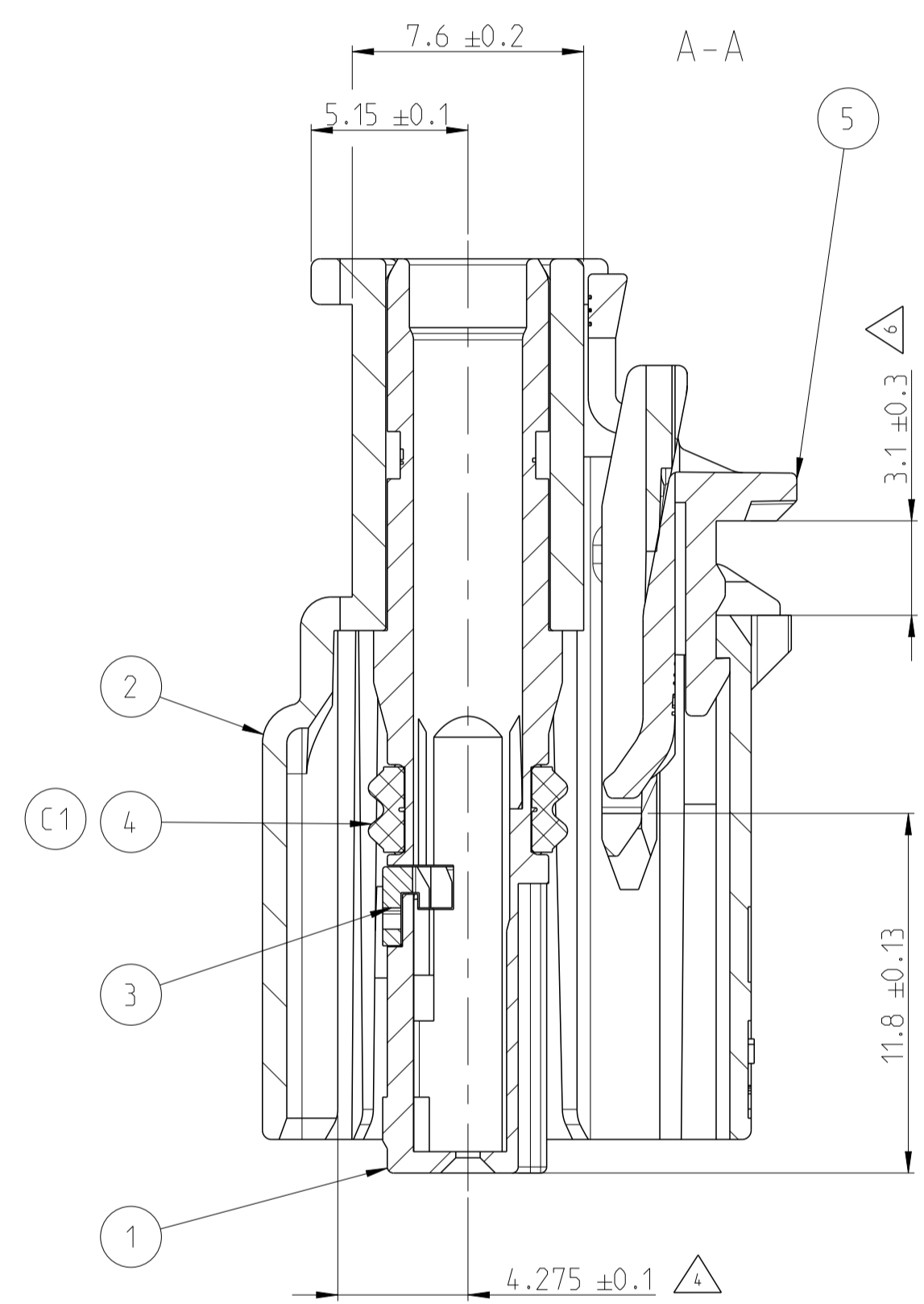
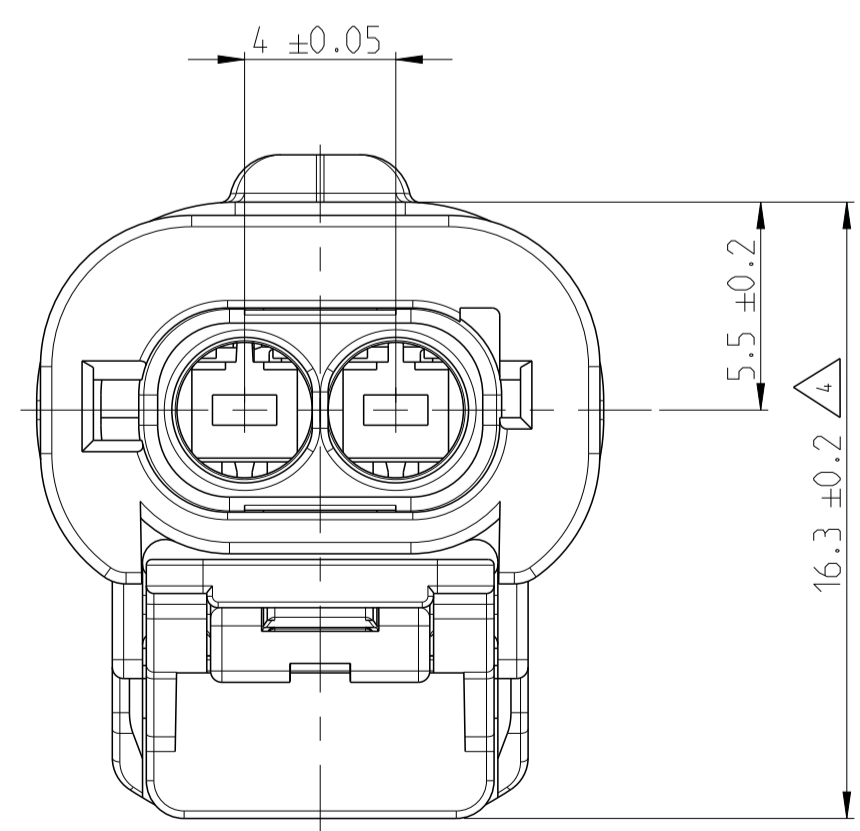
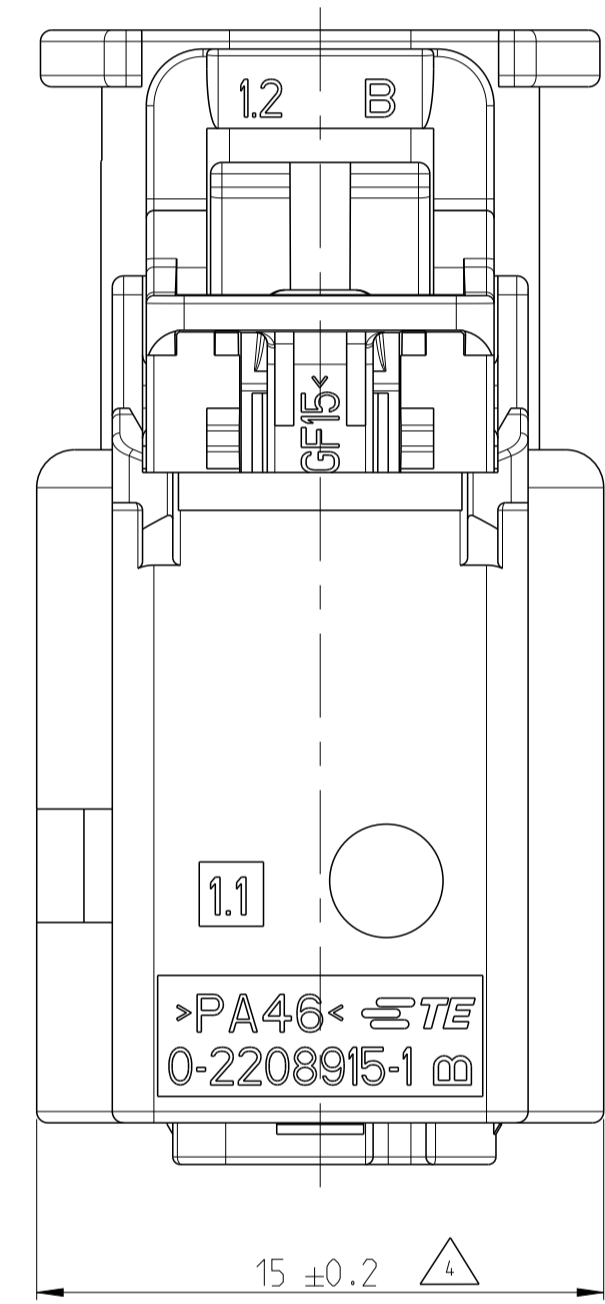
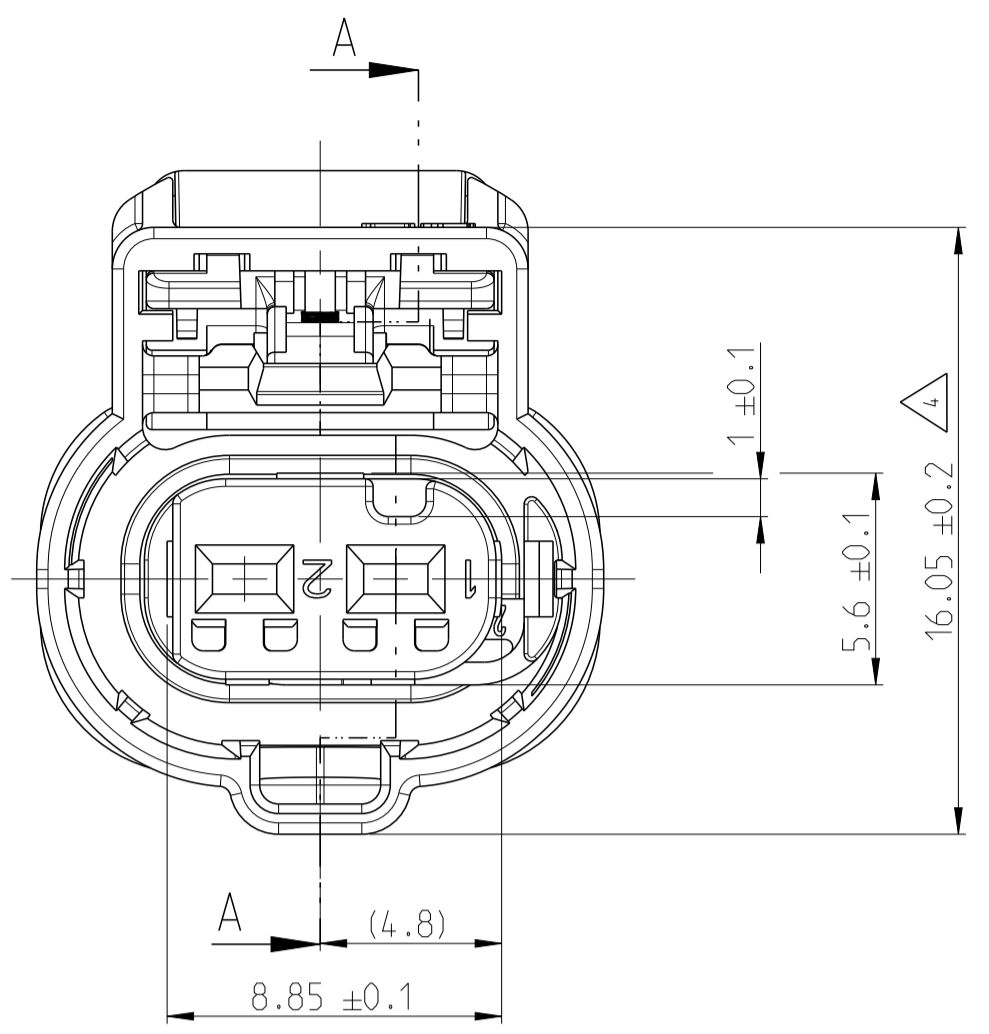


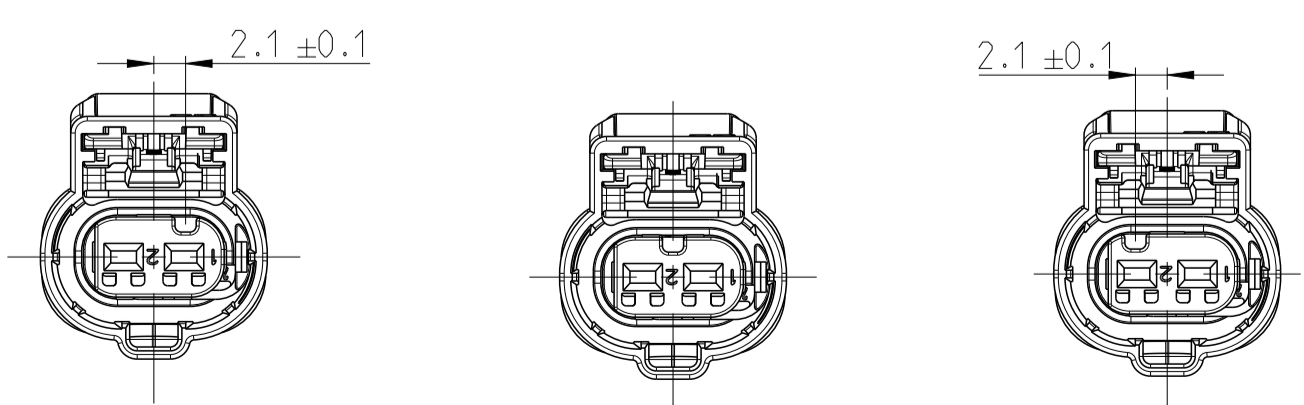
PROJECT NR.:		REVISIONS ÄNDERUNGEN			
P.	LTH	DESCRIPTION BESCHREIBUNG	DATE	DWN	APVD
A1		NEW DRAWING	11JAN2016	AW	RW
B1		PRESS FIT REDUCED	23APR2018	AW	RW
C1		SEAL REPLACED	18JUN2019	AW	DM



- 3 CAVI-CAV2 INSULATION DIAMETER: FROM 1.2 TO 2.1
- 4 WARPAGE PERMITTED TO MAX 0.5
- 5 SUPPLY CONDITION: RETAINER ITEM 3 IN PRE LOCKED POSITION AFTER CONTACT LOADING AND BEFORE CONTACT EXTRACTION TO DRIFT IN THIS DIRECTION (1.65MM)
- 6 SUPPLY CONDITION: CPA ITEM 5 IN PRE LOCKED POSITION AFTER MATING AND BEFORE UNMATING TO DRIFT IN THIS DIRECTION (3.1MM)
- 7 DATE CODE (DDYY)
- 8 NEUTRAL PART LASER MARKING "5-2297790-1 C"
- 3 KI-K2 ISOLATIONS-DURCHMESSER: VON 1.2 BIS 2.1
- 4 VERZUG ZULAESSIG BIS MAX 0.5
- 5 LIEFERZUSTAND: TEIL POS 3 IN VORRSTELLUNG NACH KONTAKTBESTUECKUNG UND VOR KONTAKTENTNAHME IN DIESER RICHTUNG 1.65MM VERSCHIEBEN
- 6 LIEFERZUSTAND: CPA POS 5 IN VORRSTELLUNG NACH STECKUNG UND VOR DRUECKEN DES VERRIEGELUNGSHEBELS IN DIESER RICHTUNG 3.1MM VERSCHIEBEN
- 7 DATUM KODIERUNG (TTJJ)
- 8 NEUTRAL - LASER -BEDRUCKUNG "5-2297790-1 C"

CONTACTS/SWS: HPF 1.2, 0.35mm ² KONTAKTE/EDS: HPF 1.2	SEE DRW.: 2208363 2297816	-
CONTACTS/SWS: HPF 1.2, 0.5mm ² KONTAKTE/EDS: HPF 1.2	SEE DRW.: 2208362 2297817	-
CONTACTS/SWS: HPF 1.2, 0.75mm ² KONTAKTE/EDS: HPF 1.2	SEE DRW.: 2208360 2297818	-
CONTACTS/SWS: HPF 1.2, 1.0mm ² KONTAKTE/EDS: HPF 1.2	SEE DRW.: 2208360 2297819	-
SPECIAL UNLOCKING TOOLS SPEZIELLE ENTRIEGELUNGS-WERKZEUGE	3-1579018-4	-
TO BE USED WITH ZU VERWENDEN MIT	-	-
PACKING VERPACKUNG	BULK SCHUETTUT	-
FITTING BLINDPLUGS PASSENDE BLINDSTOPFEN	967056-1	-
COUNTERPART GEGENSTUECK	-	-
INTERFACE SCHNITTSTELLE	114-18679-3	-
PRODUCT-SPEC. PRODUKT-SPEZ.	108-94615	-
APPLICATION-SPEC. VERARBEITUNGS-SPEZ.	114-94415	-
TE CONNECTIVITY NO. TE CONNECTIVITY NR.	DVP PART FREMDTEIL	-

CODINGS / KODIERUNGEN 2:1



TE-ASSY-NO. TE-ZSB.-NR.	ASSY REV ZSB. REV	CODING KODIERUNG	MATERIAL	DESCRIPTION BENENNUNG	COLOR SIM. FARBE AEHNL.	RAL	QTY. MENGE	ITEM NO. ITEM NR.
5-2297790-3	C	C	PA66-GF15	CPA	RED	RAL3003	1	5
			VMQ	RADIAL SEAL	LIGHT BLUE	RAL5012	1	4
			PA66-GF15	RETAINER 2POS	VIOLET	RAL4006	1	3
			PA46	PROTEC COVER MCON 1.2, 2POS	BLACK	RAL9011	1	2
			PA66-GF15	2POS, HPF 1.2, REC HSG, SLD	LIGHT BLUE	RAL5012	1	1
5-2297790-2	C	B	PA66-GF15	CPA	RED	RAL3003	1	5
			VMQ	RADIAL SEAL	LIGHT BLUE	RAL5012	1	4
			PA66-GF15	RETAINER 2POS	VIOLET	RAL4006	1	3
			PA46	PROTEC COVER MCON 1.2, 2POS	BLACK	RAL9011	1	2
			PA66-GF15	2POS, HPF 1.2, REC HSG, SLD	NUT BROWN	RAL8011	1	1
5-2297790-1	C	A	PA66-GF15	CPA	RED	RAL3003	1	5
			VMQ	RADIAL SEAL	LIGHT BLUE	RAL5012	1	4
			PA66-GF15	RETAINER 2POS	VIOLET	RAL4006	1	3
			PA46	PROTEC COVER MCON 1.2, 2POS	BLACK	RAL9011	1	2
			PA66-GF15	2POS, HPF 1.2, REC HSG, SLD	BLACK	RAL9011	1	1

TOLERANCES UNLESS OTHERWISE SPECIFIED ACC. TO DIN 16901-140 @ENTRICE TO NOMINAL DIMENSION, EDITION 1982-11 SHALL APPLY. Freiinstoertolerenz nach DIN 16901-140. Es gilt die Ausgabe 1982-11.		TOLERANCING ISO 8015 TOLERIERUNG ISO 8015	
DIESE ZEICHNUNG IST EIN KONTROLLIERTES DOKUMENT. BEMASSUNGEN UND TOLERANZEN GEMAESS GPS (ISO STANDARDS).			
THIS DRAWING IS A CONTROLLED DOCUMENT. DIMENSIONING AND TOLERANCING PER GPS (ISO STANDARDS)			
DIMENSIONS: MASSENHEITEN: MM	TOLERANCES UNLESS OTHERWISE SPECIFIED ALSBESONDERER ANGABEN	DWN A. WEIPERT 11JAN2016	CHK R. WIENZLIERS 13JAN2016
0 PLC 1 PLC 2 PLC 3 PLC	±0.1 ±0.1 ±0.1 ±0.1	PRODUCT SPEC PRODUKTSPEZ.	APVD
MATERIAL	WEIGHT GEWICHT	APPLICATION SPEC VERARBEITUNGS-SPEZ.	NAME
-	-	CUSTOMER DRAWING	2 POS, HPF 1.2, REC HSG, ASSY, SEALED 2 POL, HPF 1.2, FL.KONT. GEH., DICHT

TE Connectivity	
SIZE A1	CAGE CODE 00779
DRAWING NO. ①-2297790	RESTRICTED TO NUR FÜR
SCALE MASSSTAB 5:1	SHEET BLATT 1 OF 1
REV. C	REV. C