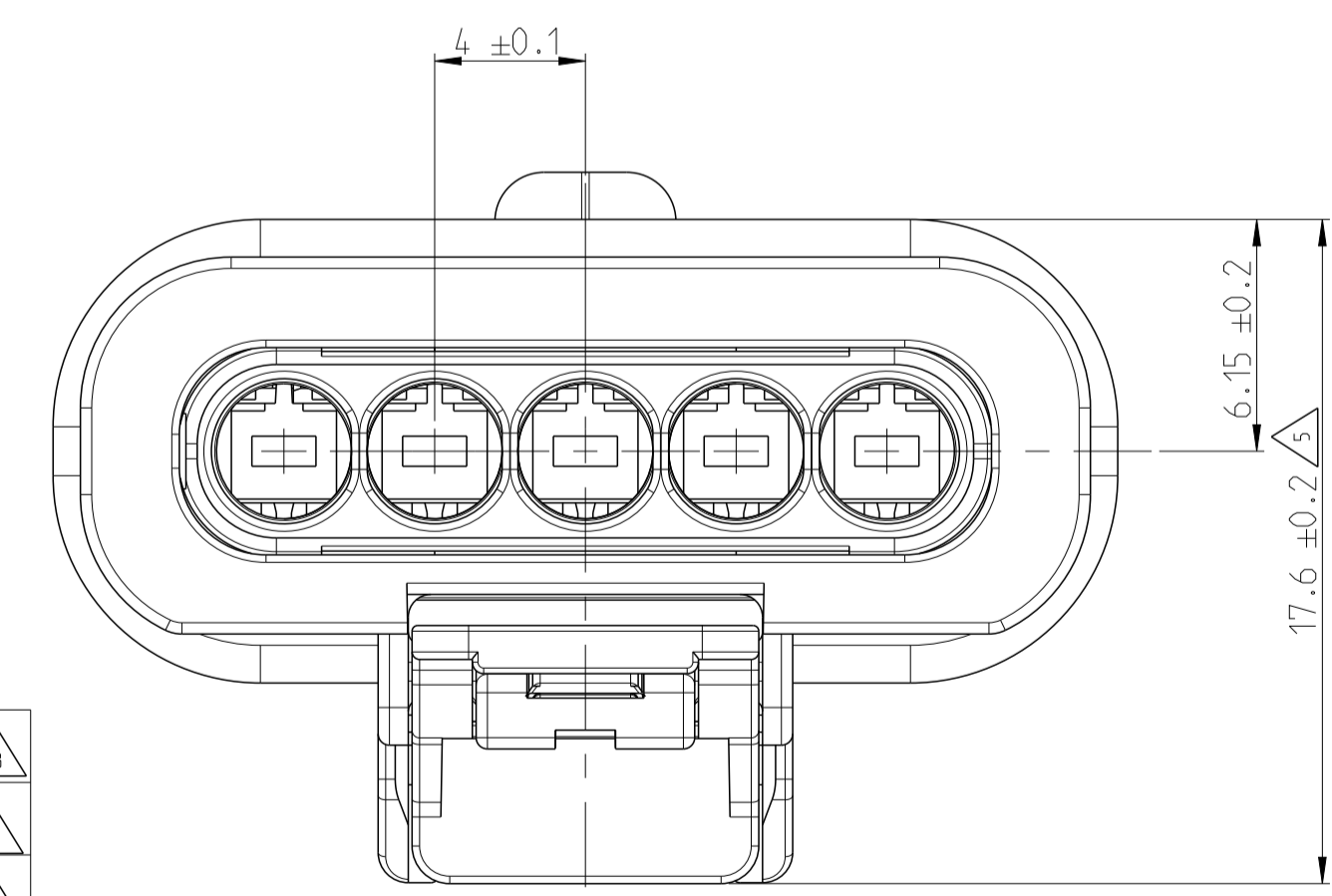
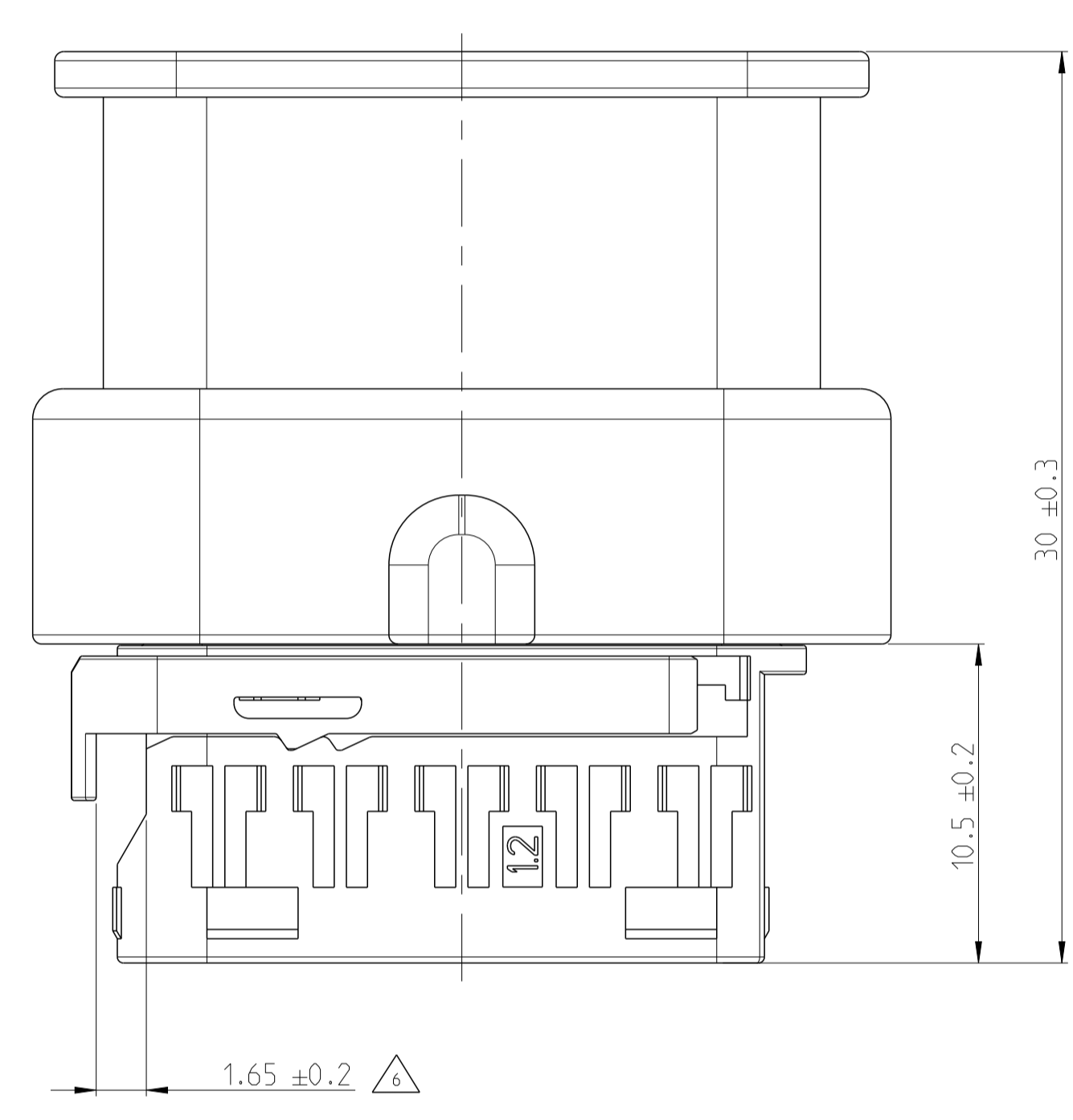
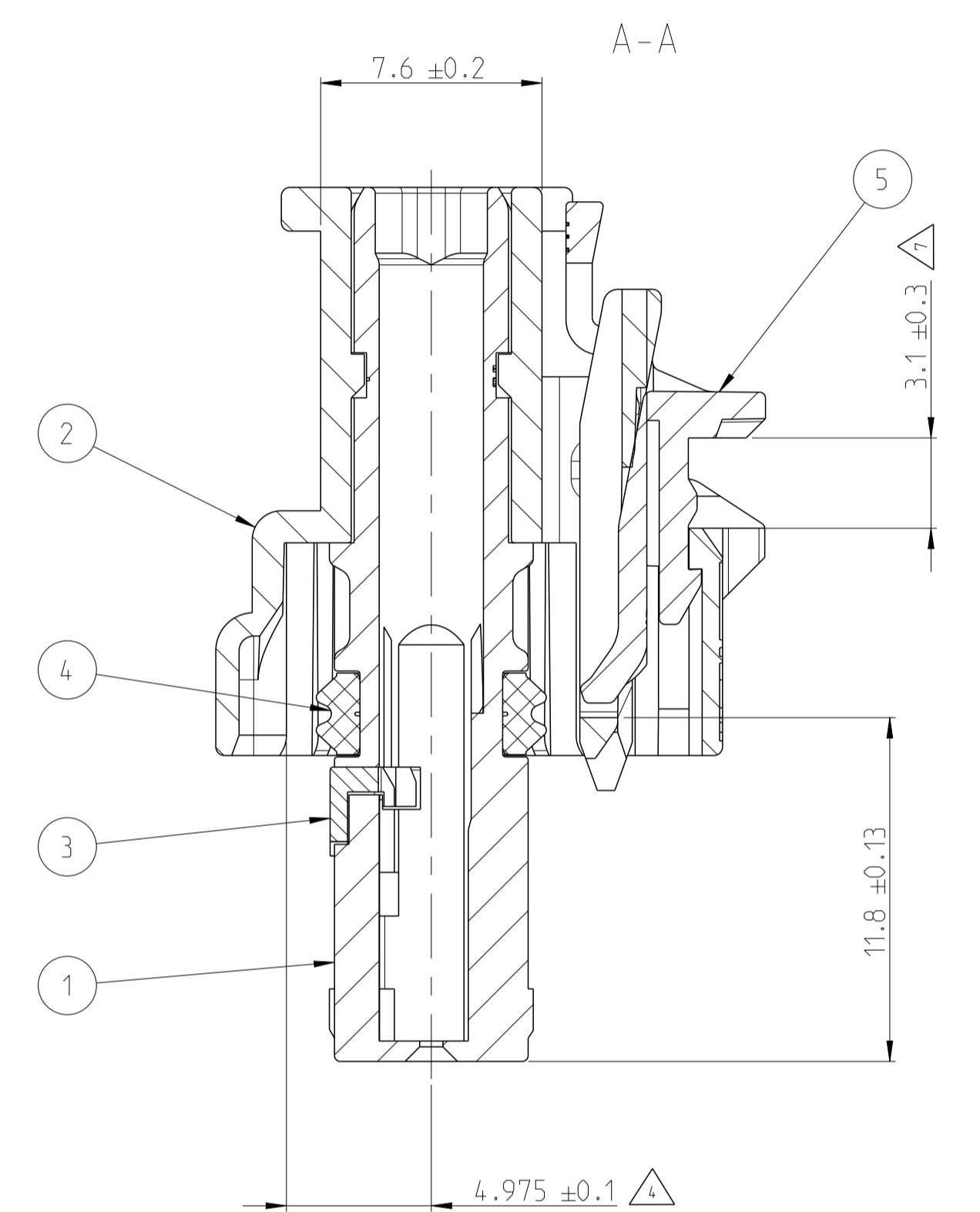
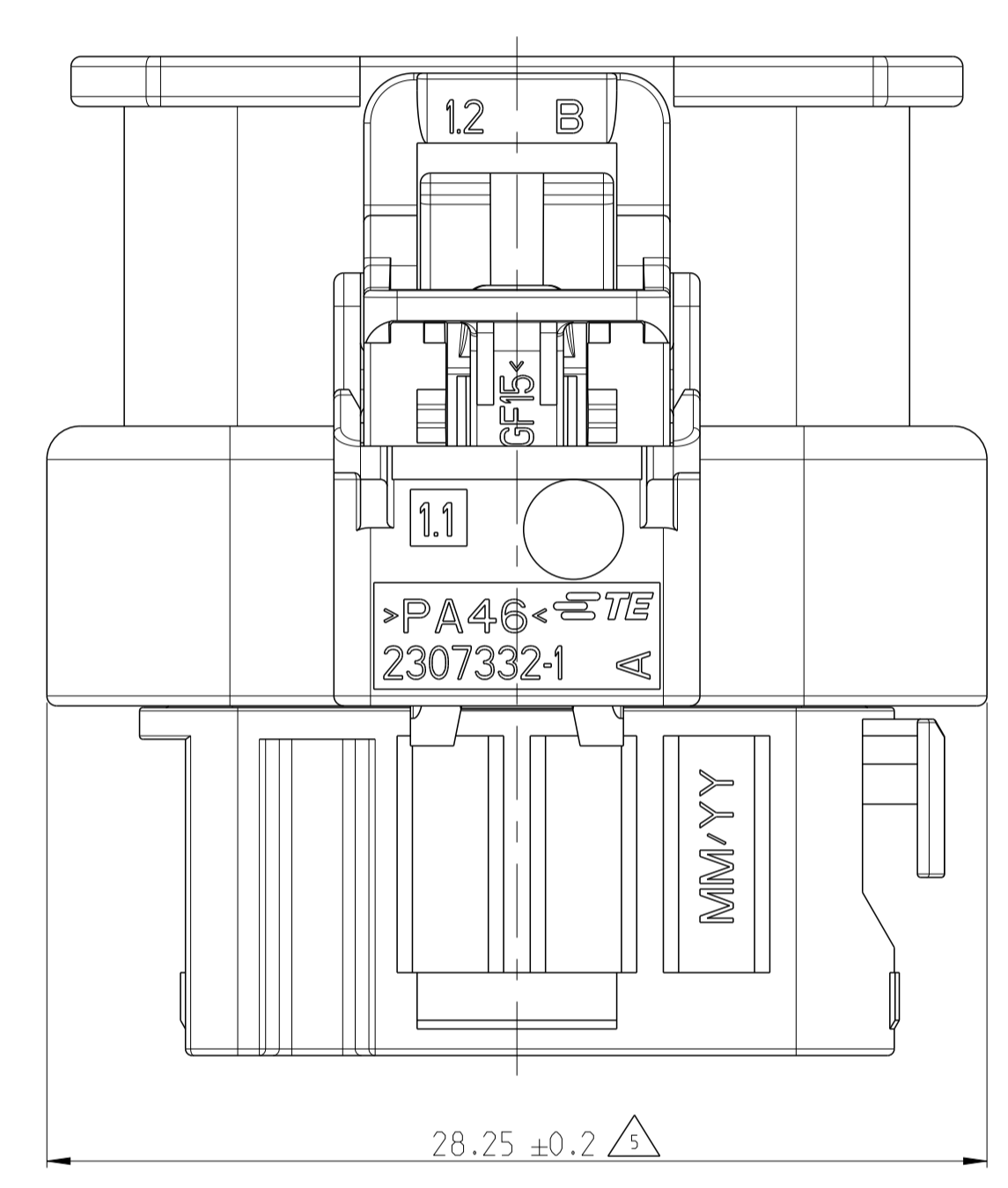
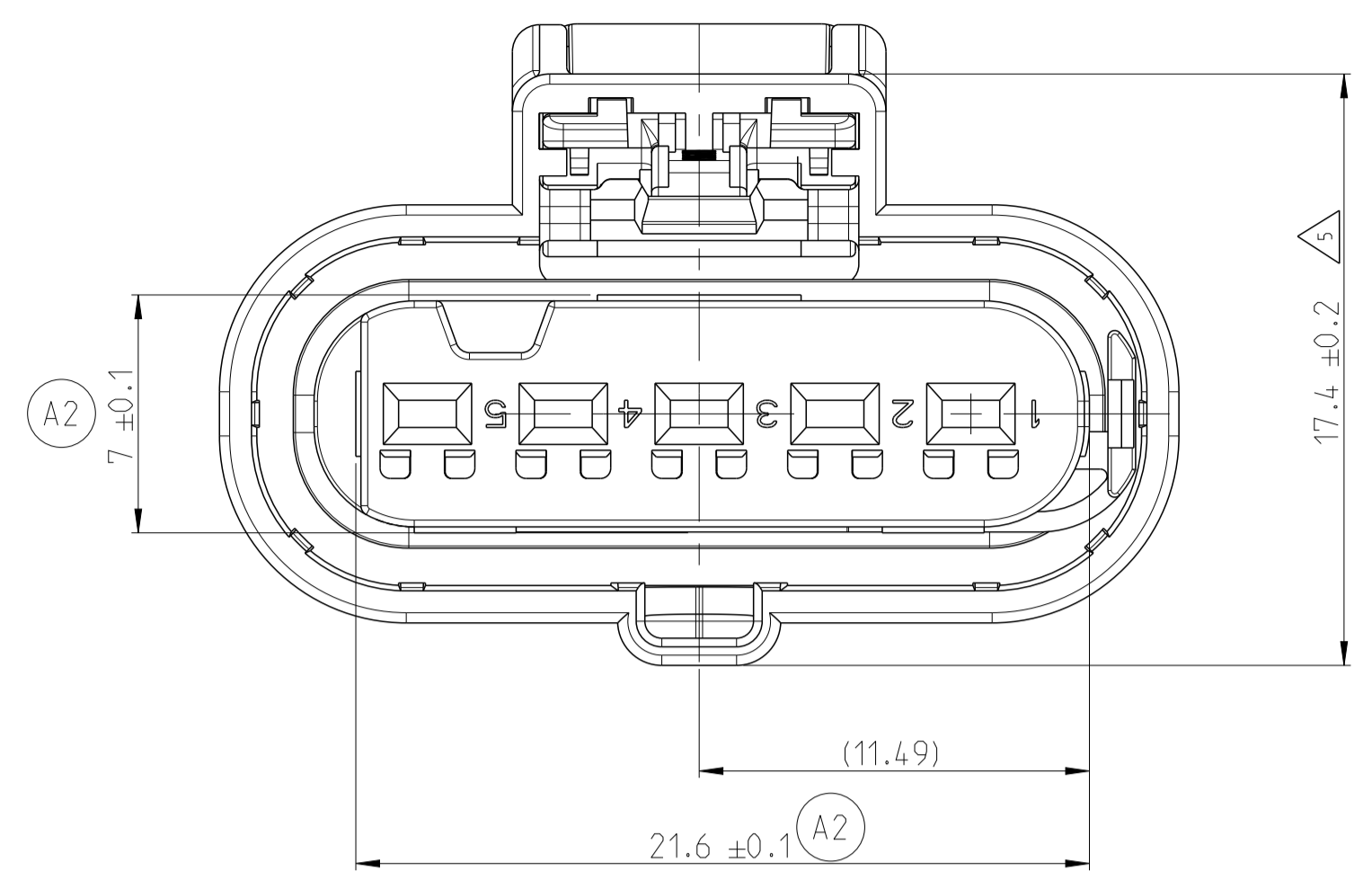


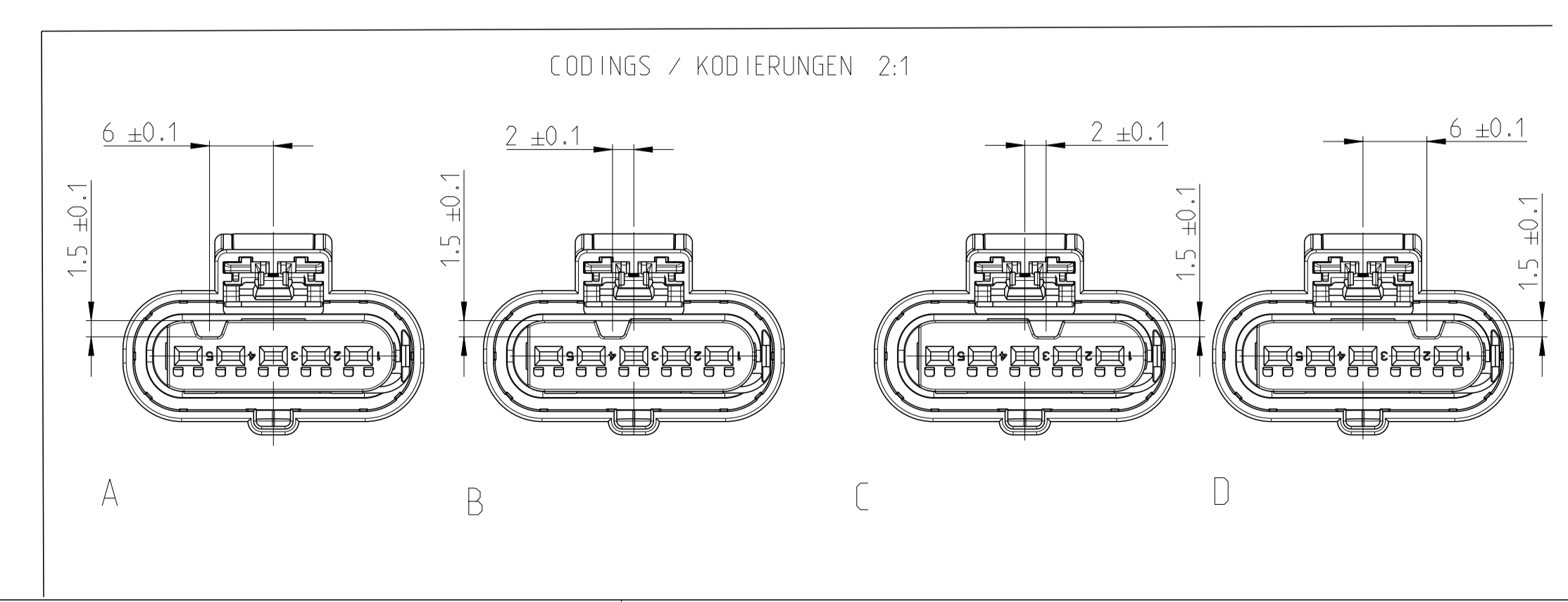
PROJECT NR.:		REVISIONS ÄNDERUNGEN			
P.	LTN	DESCRIPTION BESCHREIBUNG	DATE	DWN	APVD
A1		NEW DRAWING	11MAY2017	AW	RW
A2		DRAWING UPDATE	05NOV2018	RD	DM



- 3 CAVI-CAVS INSULATION DIAMETER: FROM 1.2 TO 2.1
- 4 WARPAGE PERMITTED TO MAX 0.3
- 5 WARPAGE PERMITTED TO MAX 0.5
- 6 SUPPLY CONDITION: RETAINER ITEM 3 IN PRE LOCKED POSITION AFTER CONTACT LOADING AND BEFORE CONTACT EXTRACTION TO DRIFT IN THIS DIRECTION (1.65MM)
- 7 SUPPLY CONDITION: CPA ITEM 5 IN PRE LOCKED POSITION AFTER MATING AND BEFORE UNMATING TO DRIFT IN THIS DIRECTION (3.1MM)
- 1 K1-K5 ISOLATIONS-DURCHMESSER: VON 1.2 BIS 2.1
- 2 VERZUG ZULAESSIG BIS MAX 0.3
- 3 VERZUG ZULAESSIG BIS MAX 0.5
- 4 LIEFERZUSTAND: TEIL POS 3 IN VORRSTELLUNG NACH KONTAKTBESTUECKUNG UND VOR KONTAKTENTNAHME IN DIESER RICHTUNG 1.65MM VERSCHIEBEN
- 5 LIEFERZUSTAND: CPA POS 5 IN VORRSTELLUNG NACH STECKUNG UND VOR DRUECKEN DES VERRIEGELUNGSHEBELS IN DIESER RICHTUNG 3.1MM VERSCHIEBEN

CONTACTS/SWS: HPF 1.2, 0.35mm ² KONTAKTE/EDS: HPF 1.2	SEE DRW. 2208363 2297816	3
CONTACTS/SWS: HPF 1.2, 0.5mm ² KONTAKTE/EDS: HPF 1.2	SEE DRW. 2208362 2297817	3
CONTACTS/SWS: HPF 1.2, 0.75mm ² KONTAKTE/EDS: HPF 1.2	SEE DRW. 2208360 2297818	3
CONTACTS/SWS: HPF 1.2, 1.0mm ² KONTAKTE/EDS: HPF 1.2	SEE DRW. 2208360 2297819	3
SPECIAL UNLOCKING TOOLS SPEZIELLE ENTRIEGELUNGS-WERKZEUGE	3-1579018-4	
TO BE USED WITH ZU VERWENDEN MIT	-	
PACKING VERPACKUNG	BLUK SCHUETTUT	
FITTING BLINDPLUGS PASSENDE BLINDSTOPFEN	967056-1	
COUNTERPART GEGENSTUECK	-	
INTERFACE SCHNITTSTELLE	114-18679-3	
PRODUCT-SPEC. PRODUKT-SPEZ.	108-94615	1
APPLICATION-SPEC. VERARBEITUNGS-SPEZ.	114-94415	2
TE CONNECTIVITY NO. TE CONNECTIVITY NR.		

TE-ASSY-NO. TE-ZSB.-NR.	ASSY REV ZSB.-REV	CODING KODIERUNG	MATERIAL	DESCRIPTION BENENNUNG	COLOR / SIM. FARBE / AEHLN. RAL	QTY. MENGE	ITEM NR. ITEM NR.
5-2307334-4	A	D	PA66-GF15	CPA	RED RAL3003	1	5
			VMQ	RADIAL SEAL	NATURE	1	4
			PA46	RETAINER SPOS	VIOLET RAL4006	1	3
			PA46	PROTEC COVER MCON 1.2, SPOS	BLACK RAL9011	1	2
5-2307334-3	A	C	PA66-GF15	SPOS, HPF 1.2, REC HSG. SLD	GREY RAL7073	1	1
			PA66-GF15	CPA	RED RAL3003	1	5
			VMQ	RADIAL SEAL	NATURE	1	4
			PA66-GF15	RETAINER SPOS	VIOLET RAL4006	1	3
5-2307334-2	A	B	PA46	PROTEC COVER MCON 1.2, SPOS	BLACK RAL9011	1	2
			PA66-GF15	SPOS, HPF 1.2, REC HSG. SLD	LIGHT BLUE RAL5012	1	1
			PA66-GF15	CPA	RED RAL3003	1	5
			VMQ	RADIAL SEAL	NATURE	1	4
5-2307334-1	A	A	PA66-GF15	RETAINER SPOS	VIOLET RAL4006	1	3
			PA46	PROTEC COVER MCON 1.2, SPOS	BLACK RAL9011	1	2
			PA66-GF15	SPOS, HPF 1.2, REC HSG. SLD	BLACK RAL9011	1	1
			PA66-GF15	CPA	RED RAL3003	1	5



TOLERANCING ACC. TO ISO 8015 © ISO 2911
 TOLERANZEN UNLESS OTHERWISE SPECIFIED ACC. TO ISO 14005
 AND DIN 15212, 1561

DIESE ZEICHNUNG IST EIN KONTROLLIERTES DOKUMENT.
 DIMENSIONING AND TOLERANCING PER GPS (ISO STANDARDS).

THIS DRAWING IS A CONTROLLED DOCUMENT.
 DIMENSIONING AND TOLERANCING PER GPS (ISO STANDARDS).

DATE: 12MAY2017
 DWN: A. WEIPERT
 CHK: R. WIENZLIERS

SIZE: A1
 CAGE CODE: 00779
 DRAWING NO: 2307334

REVISIONS: 1, 2

PRODUCT SPEC: 108-94615

APPLICATION SPEC: 114-94415

MATERIAL: -

WEIGHT: 4.9

CUSTOMER DRAWING

SCALE: 5:1

SHEET: 1 OF 1

REV: A2

TE Connectivity

5 POS, HPF 1.2, REC HSG, ASSY, SEALED
 5POL, HPF 1.2, FL.KONT. GEH. DICHT