

4

3

2

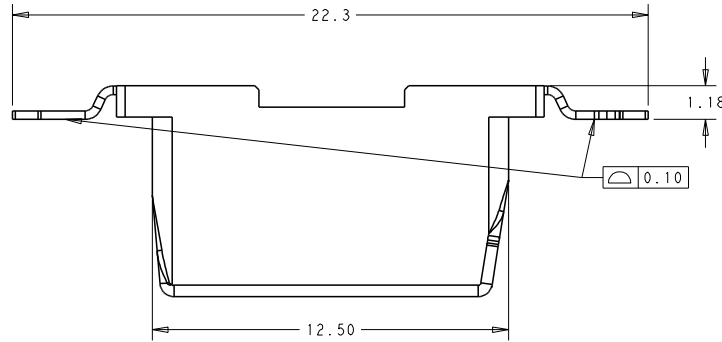
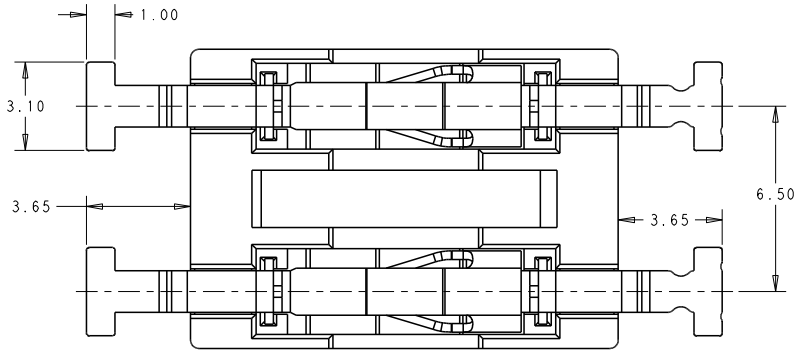
1

THIS DRAWING IS UNPUBLISHED. RELEASED FOR PUBLICATION 20  
© COPYRIGHT 20 BY - ALL RIGHTS RESERVED.

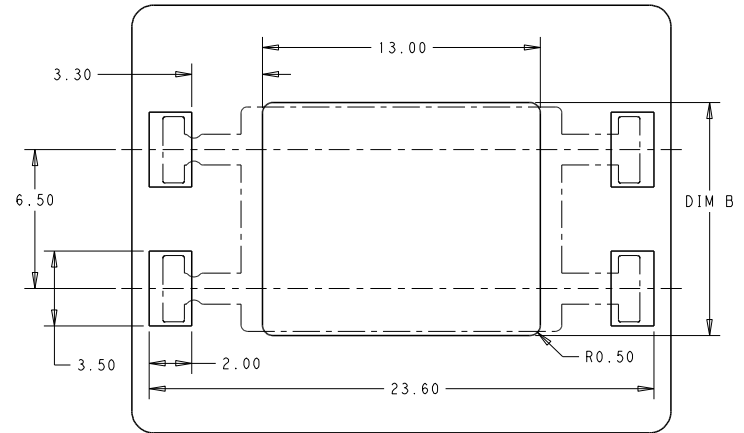
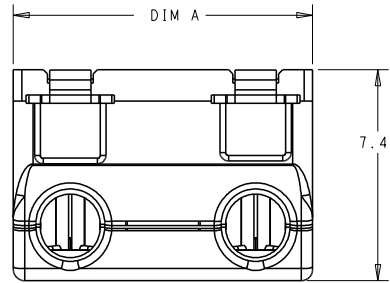
REVISIONS				
P	LYR	DESCRIPTION	DATE	DWN APVD
A		FIRST VERSION	13NOV2018	G.F S.M
A1		ADD OPERATING TEMPERATURE	20NOV2019	G.F S.M

NOTES :

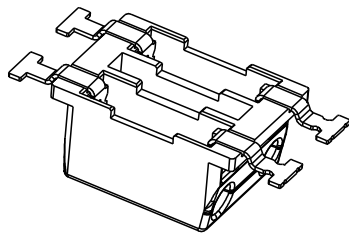
- MATERIALS AND FINISH:  
- HOUSING: HIGH THERMAL PLASTIC, COLOR: WHITE  
- CONTACTS: COPPER ALLOY, FINISH: PRE-TIN OVER NICKEL UNDERPLATE
- MUST COMPLY WITH DIRECTIVE 2002/95/EC (ROHS)
- OPERATING TEMPERATURE: -55°C-105°C
- WIRE TYPES AND SIZES ACCEPTED  
SOLID WIRE: 18AWG, 20AWG, 22AWG, 24AWG  
STRAND WIRE: 18AWG (STRANDS: 16); 20AWG (STRANDS: 7); 22AWG (STRANDS: 7)  
24AWG (UL1061/STRANDS: 7)  
MAX INSULATION OD: 2.1mm MAX.  
STRIP LENGTH: 8.0±0.5mm
- PACKAGED IN TAPE AND REEL



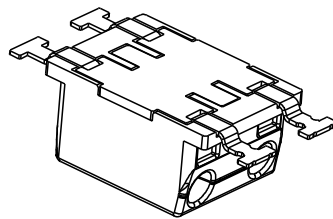
SCALE 8:1



SCALE 6:1



W/O CAP TYPE  
P/N: 2834331-1/2



WITH CAP TYPE  
P/N: 1-2834331-1/2

10.9	10.5	2	1-2834331-2
10.9	10.5	2	2834331-2
4.4	4.0	1	1-2834331-1
4.4	4.0	1	2834331-1
DIM B	DIM A	POLES No	PART NO

THIS DRAWING IS A CONTROLLED DOCUMENT.		DWN: GEORGE FU 13NOV2018	TE Connectivity	
		CHK: GEORGE FU 13NOV2018		
		APVD: SHEI MING 13NOV2018	NAME: 6.5mm PITCH ITB RELEASABLE POKE-IN CONN.	
DIMENSIONS: (mm)		PRODUCT SPEC: 108-137311	SIZE: A2	
TOLERANCES UNLESS OTHERWISE SPECIFIED:		APPLICATION SPEC: 114-137311	CAGE CODE: 00779	
0 PLC ± 1 PLC ±0.20 2 PLC ±0.13 3 PLC ± 4 PLC ± ANGLES ± FINISH		WEIGHT: -	DRAWING NO: 2834331	
MATERIAL NOTE 1		CUSTOMER DRAWING	RESTRICTED TO: -	
		SCALE: 4:1	SHEET 1 OF 1 REV A1	