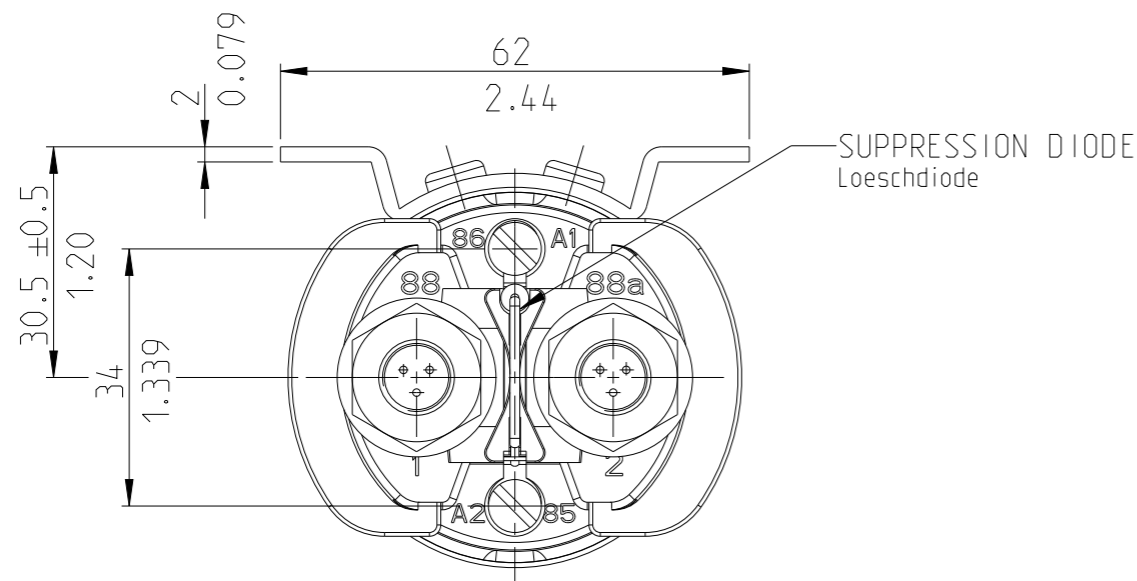
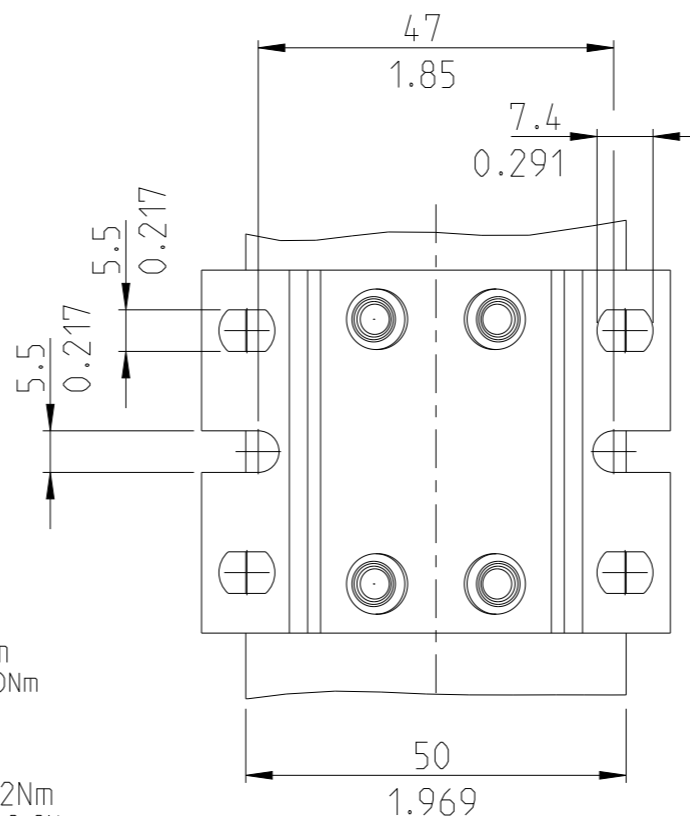


P	LTR	DESCRIPTION	DATE	DWN	APVD
A		ECN-24-249016 TE STANDARD	24 JAN 2024	SS	RB



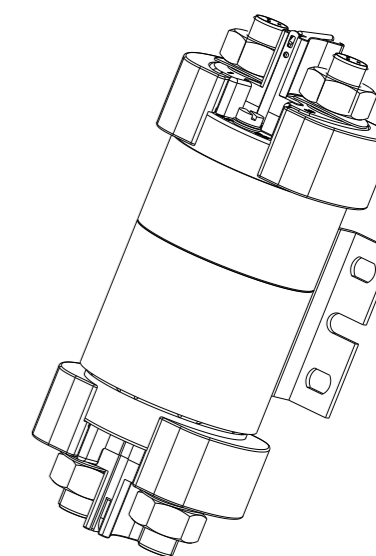
SUPPRESSION DIODE  
Loeschdiode

MOUNTING DIMENSION  
Befestigungsmaße

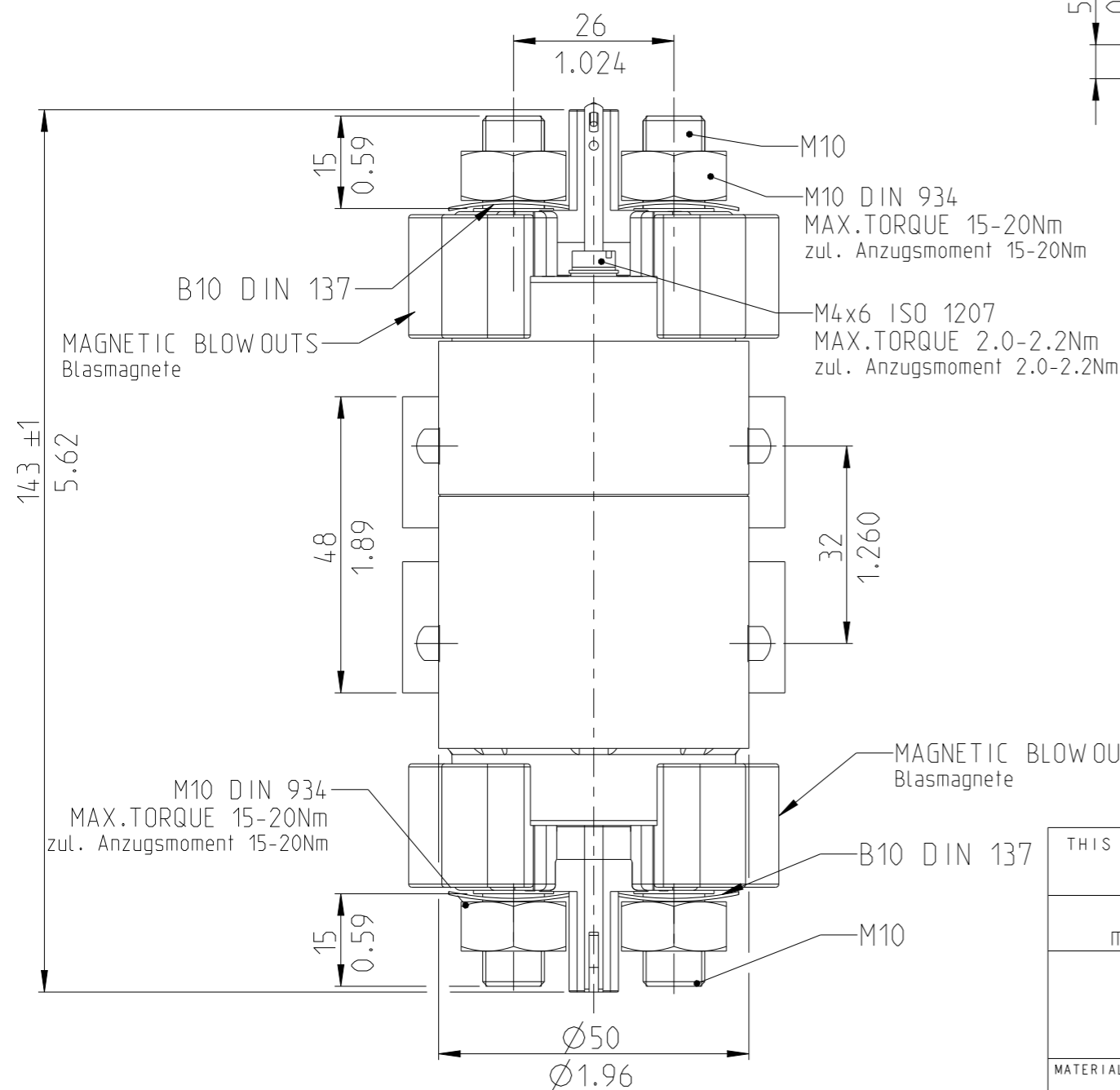


NOTES  
Bemerkungen

1 TE-CONNECTIVITY ORDER-NUMBER  
TE-Connectivity Bestellnummer



ISO 1:2



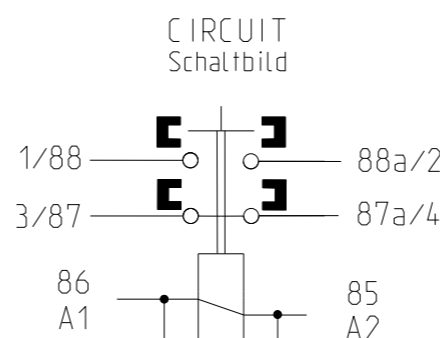
MAGNETIC BLOW OUTS  
Blasmagnete

M10  
M10 DIN 934  
MAX.TORQUE 15-20Nm  
zul. Anzugsmoment 15-20Nm

M4x6 ISO 1207  
MAX.TORQUE 2.0-2.2Nm  
zul. Anzugsmoment 2.0-2.2Nm

M10 DIN 934  
MAX.TORQUE 15-20Nm  
zul. Anzugsmoment 15-20Nm

MAGNETIC BLOW OUTS  
Blasmagnete



THIS DRAWING IS A CONTROLLED DOCUMENT.

DIMENSIONS:	TOLERANCES UNLESS OTHERWISE SPECIFIED:
mm/inch	DIN ISO 2867 cL
0 PLC	±
1 PLC	±
2 PLC	± 0.03
3 PLC	± 0.010
4 PLC	±
ANGLES	± 0°30'
MATERIAL	FINISH

DWN	19DEC 2023
CHK	19DEC 2023
APVD	19DEC 2023
PRODUCT SPEC	
APPLICATION SPEC	
WEIGHT	
CUSTOMER DRAWING	

K1146228	1	A	POWER RELAY 300A (24/28VDC) Leistungsrelais 300A (24/28VDC)	1053	1
PART/TCPN NO.	REV.		DESCRIPTION	WEIGHT [g]	ITEM NO.

**TE** TE Connectivity

NAME  
POWER RELAY 300A (24/28VDC)  
Leistungsrelais 300A (24/28VDC)

SIZE	CAGE CODE	DRAWING NO	RESTRICTED TO
A3	00779	C=29-321-12B	-

SCALE	SHEET	OF	REV
5:1	1	2	A

4

3

2

1

© 2023 TE Connectivity. All Rights Reserved.

REVISIONS

P	LTR	DESCRIPTION	DATE	DWN	APVD
-		SEE SHEET 1	-	-	-

TECHNICAL DATA

Technische Daten

ENVIRONMENTAL CHARACTERISTICS

TEMPERATURE RANGE.....-40°C TO +85°C (-40°F TO +185°F)  
 MAX. ALTITUDE RATING.....50 000 FT  
 SEAL INTERIOR.....IP67 (6FEET/0.2BAR-1MIN.) I.A.W. IEC 529  
 IP6K9K (STEAM PRESSURE) DIN 40050 PART 9 AND I.A.W. IEC 529

Allgemeine Daten

Umgebungstemperatur..... -40°C bis +85°C (-40°F bis +185°F)  
 Max. Arbeitshöhe.....15000m  
 Schutzart Innenraum..... IP67 (0.2BAR-1MIN.) nach IEC 529  
 IP6K9K (Dampfdruck) DIN 40050 Teil 9 UND nach IEC 529

CONNECTIONS

SHOCK G-LEVEL..... 6g/ 11 msec  
 VIBRATION ..... 4g/ 50-2000 Hz

Anschlüsse

IP00 I.A.W. IEC529  
 Anschlüsse ..... IP 00 nach IEC529  
 Schock ..... 6g/ 11 m sec  
 Vibration ..... 4g/ 50-2000 Hz

ELECTRICAL CHARACTERISTICS

MIN. INSULATION RESISTANCE INITIAL .....100 MEGOHMS  
 AFTER LIVE OR ENVIRONMENTAL ..... 50 MEGOHMS  
 DIELECTRIC WITHSTANDING VOLTAGE SEA LEVEL 1 MINUTE .....1050 VOLTS  
 ALTITUDE 1 MINUTE .....500 VOLTS  
 MAX. CONTACT DROP, INITIAL..... 0.15 VDC  
 AFTER LIFE TEST..... 0.175 VDC  
 OVERLOAD.....2400 AMP FOR 1 SEC, 600AMP FOR 20 SEC  
 DUTY RATING .....300 AMP CONTINUOUS

Elektrische Daten

Min. Isolationswiderstand..... 100 MOhm  
 Isolationswiderstand nach Belastung ..... 50 MOhm  
 Hochspannungsfestigkeit Meeresspiegel 1 Minute ..... 1050 VOLTS  
 Max. Arbeitshöhe 1 Minute ..... 500 VOLTS  
 Max. Kontaktspannungsabfall..... 0.15 VDC  
 Kontaktspannungsabfall nach Lebensdauer..... 0.175 VDC  
 Überlast..... 2400AMP für 1 sec, 600AMP für 20 sec  
 Dauerstrom (Nennlast)..... 300 A-

RATED CONTACT LOAD

MAIN CONTACT

RESISTIVE LOAD.....200 000 CYCLES  
 ENDURANCE .....2 000 000 CYCLES

Lebensdauer

Hauptkontakte

Nennlast (ohmsch)..... 200 000 Zyklen  
 Mechanisch..... 2 000 000 Zyklen

COIL DATA

VOLTAGE RANGE..... 18 TO 32 VDC  
 NOMINAL VOLTAGE..... 24/28 VDC  
 PICK UP VOLTAGE MAX.....18 VDC FULL TEMP. RANGE  
 DROP OUT VOLTAGE MIN..... ≤4 VDC FULL TEMP. RANGE  
 COIL RESISTANCE.....62 OHMS ±10%  
 COIL CURRENT APPROX. .... 0.4 AMP  
 COIL POWER APPROX. .... 10 WATT

Spulendaten

Betriebsspannung..... 18 bis 32 VDC  
 Nennspannung..... 24/28 VDC  
 Max. Anzugsspannung.....18 VDC (ges. Temperaturbereich)  
 Trennspannung..... ≤4 VDC (ges. Temperaturbereich)  
 Spulenwiderstand..... 62 Ohm ±10 %  
 Spulenstrom ..... ca. 0.4 A  
 Spulenleistung ..... ca. 10 W

OPERATING TIMES (NO)

OPERATE (CLOSING)..... MAX. 40 ms  
 BOUNCE..... MAX. 5 ms  
 RELEASE (OPENING)..... MAX. 20 ms

Schaltzeiten (Schließerkontakt)

Anzugszeit einschl. Prellzeit..... max. 40 ms  
 Prellzeit..... max. 5 ms  
 Abfallzeit..... max. 20 ms

OPERATING TIMES (NC)

OPERATE (OPENING )..... MAX. 30 ms  
 BOUNCE..... MAX. 8 ms  
 RELEASE (CLOSING)..... MAX. 35 ms

Schaltzeiten (Öffnerkontakt)

Öffnungszeit..... max. 30 ms  
 Prellzeit..... max. 8 ms  
 Schließzeit ..... max. 35 ms


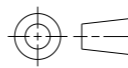
WIRE SECTION (AT NOMINAL LOAD).....MIN. 95mm<sup>2</sup>/ 0.147 sq.in./ AWG 0000Anschlußquerschnitt bei Nennlast..... min. 95mm<sup>2</sup>/ 0.147 sq.in./ AWG 0000

MOUNTING POSITION.....OPTIONAL

Einbaulage.....beliebig

SUBJECT TO CHANGE

Änderungen vorbehalten

THIS DRAWING IS A CONTROLLED DOCUMENT.		DWN Padeep M G 19DEC 2023	 TE Connectivity		
DIMENSIONS: mm/inch		CHK K.Seeger 19DEC 2023			
TOLERANCES UNLESS OTHERWISE SPECIFIED: DIN ISO 2867 cL		APVD R.Baumgartner 19DEC 2023	NAME POWER RELAY 300A (24/28VDC) Leistungsrelais 300A (24/28VDC)		
		PRODUCT SPEC	RESTRICTED TO		
MATERIAL		APPLICATION SPEC	SIZE A3	CAGE CODE 00779	DRAWING NO G-29-321-12B
FINISH		WEIGHT	SCALE 5:1		
		CUSTOMER DRAWING	SHEET 2 OF 2		
			REV A		

1470-19 (3/13)