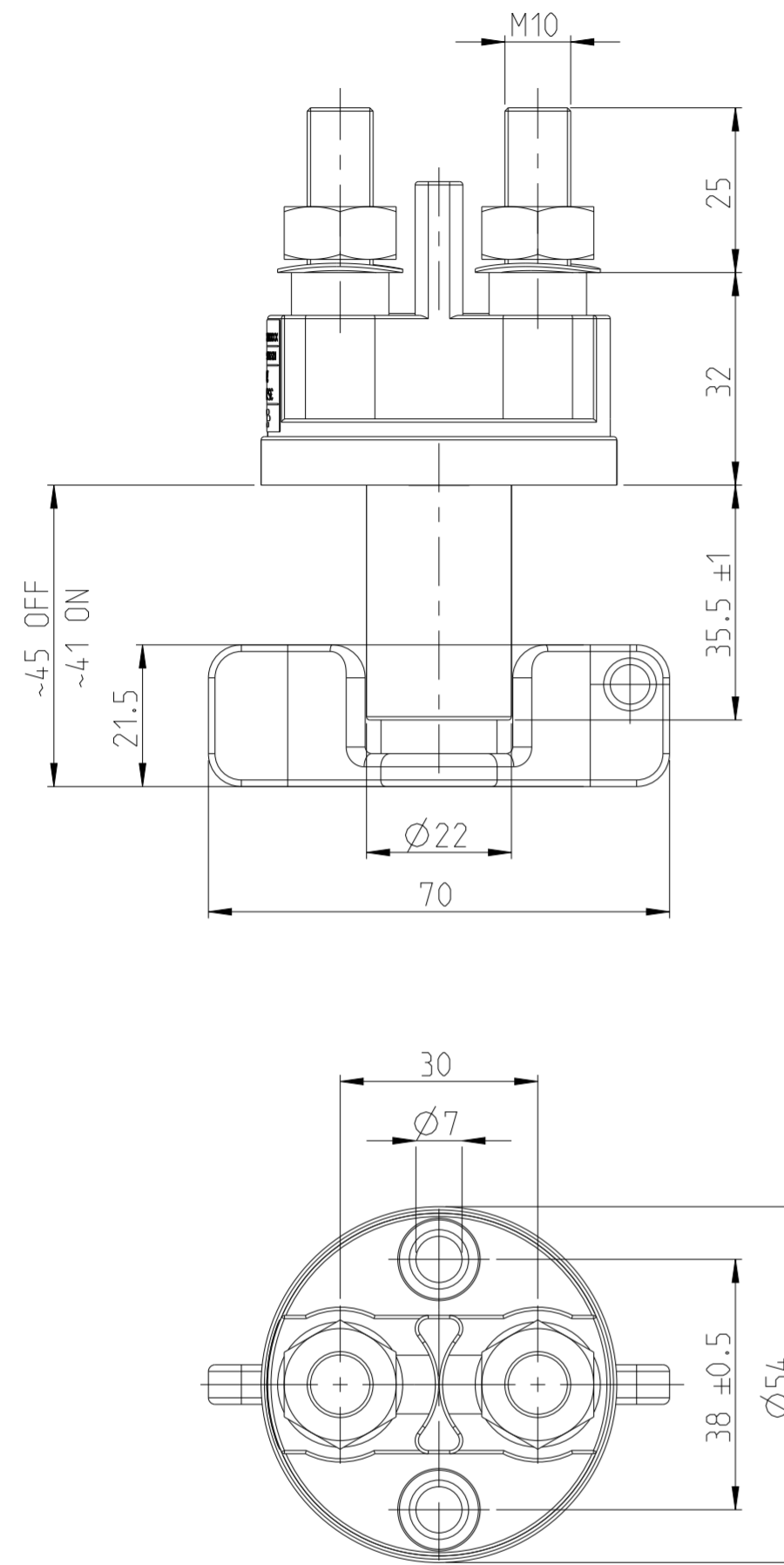


REVISIONS					
P	LTR	DESCRIPTION	DATE	DWN	APVD
	A1	ECN-23-221783 LABEL POSITION CORRECTED	18JUL2023	KS	RB



Technische Daten

Allgemeine Daten
 Umgebungstemperatur -40 °C bis +85 °C
 Schutzart IP 67 / IEC 529
 Vibration 4G / 50-2000 Hz
 Schock 6G / 11ms

Elektrische Daten
 Min. Isolationswiderstand 100 MOhm
 Hochspannungsfestigkeit 1050V - 1 min.
 Max. Kontaktspannungsabfall bei Nennlast.. 150 mV
 Dauerstrom 200 A
 Ueberlast 500 A - 180 sec.
 1000A - 30 sec.
 2500A - 5 sec.

Lebensdauer und Schaltvermoegen
 Mechanisch 20000 Schaltspiele
 Nennlast 250 A 10000 Schaltspiele
 Ueberlast 200 A 10 Schaltspiele

Sonstige Angaben
 Gehaeusewerkstoff PA GF schwarz
 Schalthebelwerkstoff PA GF rot
 Anschlussquerschnitt bei Nennlast min. 70 mm²
 Schalthebel nicht abziehbar
 Max. Anzugsmoment (Hauptkontakte) 15 - 20 Nm

TECHNICAL DATA

ENVIRONMENTAL CHARACTERISTICS
 TEMPERATURE RANGE -40 °C TO +85 °C
 SEALING IP 67 / IEC 529
 VIBRATION 4G / 50-2000 Hz
 SHOCK G-LEVEL 6G / 11ms

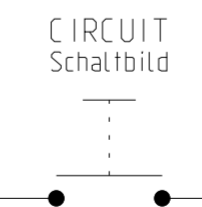
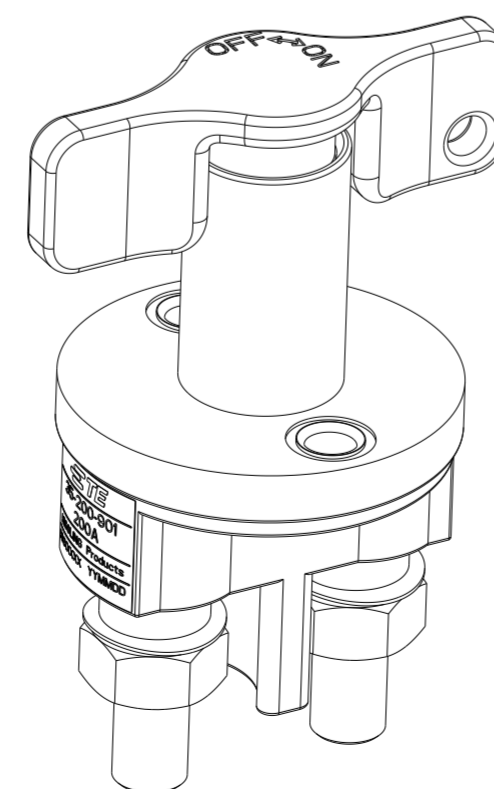
ELECTRICAL CHARACTERISTICS
 MIN INSULATION RESISTANCE 100 MOHM
 DIELECTRIC WITHSTANDING VOLTAGE 1050V - 1 min.
 MAX. CONTACT VOLTAGE DROP DURING NOMINAL LOAD 150 mV
 DUTY RATING 200 A
 OVERLOAD 500 A - 180 sec.
 1000A - 30 sec.
 2500A - 5 sec.

OPERATING LIFE CHARACTERISTICS
 MECHANICAL LIFE 20000 CYCLES
 NOMINAL LOAD 250 A 10000 CYCLES
 OVERLOAD 2000 A 10 CYCLES

GENERAL CHARACTERISTICS
 CASE MATERIAL PA GF BLACK
 SWITCH LEVER MATERIAL PA GF RED
 WIRE SECTION (AT NOMINAL LOAD) MIN. 70 MM²
 SWITCH LEVER NOT REMOVEABLE
 MAX TORQUE (MAIN CONTACTS) 15 - 20 Nm

NOTES
Bemerkungen

- 1 TE-CONNECTIVITY ORDER-NUMBER
TE-Connectivity Bestellnummer
- 2 DO NOT SWITCH UNDER LOAD!
Nicht unter Last schalten!



THIS DRAWING IS A CONTROLLED DOCUMENT.		DWN U.Grindemann 11OCT2002	K1060710 A		BATTERY DISCONNECTOR 200A Batterietrennschalter 200A	200	1
DIMENSIONS: mm		CHK E.Hamarat 07SEP2020	TE ORDER-NO.	REV.	DESCRIPTION	WEIGHT (g)	ITEM NO
TOLERANCES UNLESS OTHERWISE SPECIFIED: DIN ISO 2768mK cL		APVD U.Grindemann 07SEP2020	TE ORDER-NO.		REV.	DESCRIPTION	ITEM NO
0 PLC ±		PRODUCT SPEC	TE ORDER-NO.		REV.	DESCRIPTION	ITEM NO
1 PLC ±		APPLICATION SPEC	TE ORDER-NO.		REV.	DESCRIPTION	ITEM NO
2 PLC ±		WEIGHT	TE ORDER-NO.		REV.	DESCRIPTION	ITEM NO
3 PLC ±		CUSTOMER DRAWING	TE ORDER-NO.		REV.	DESCRIPTION	ITEM NO
4 PLC ±		SCALE 1:1	TE ORDER-NO.		REV.	DESCRIPTION	ITEM NO
ANGLES ±		SHEET 1 OF 1	TE ORDER-NO.		REV.	DESCRIPTION	ITEM NO
FINISH		REV A1	TE ORDER-NO.		REV.	DESCRIPTION	ITEM NO